



VERNON PUBLIC SCHOOLS

30 Park Street • P.O. Box 600

Vernon, CT 06066-0600

Phone (860) 870-6000

Fax (860) 870-6008

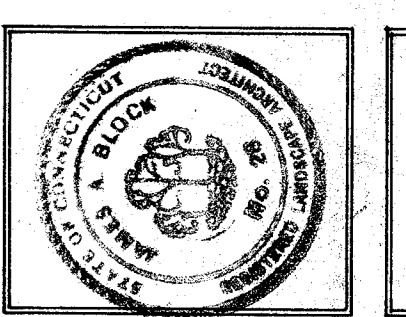
Website: www.vernonpublicschools.org

Design-Build of Turf Field and Track Replacement at RHS BID #VPS-FY21-001

ADDENDUM 1

November 24, 2020

We are issuing Addendum #1, which includes an as-built drawing for the existing stadium provided to us by the Town of Vernon. This drawing is to be used **for reference only** in the design planning of this project.



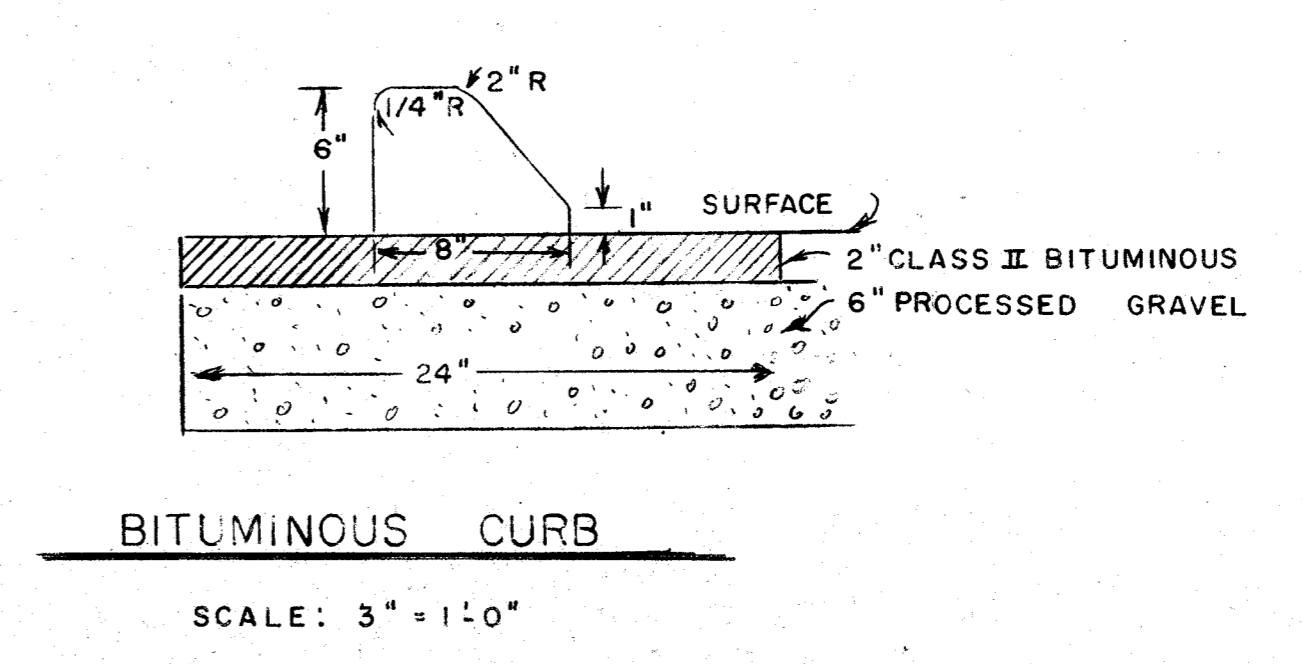
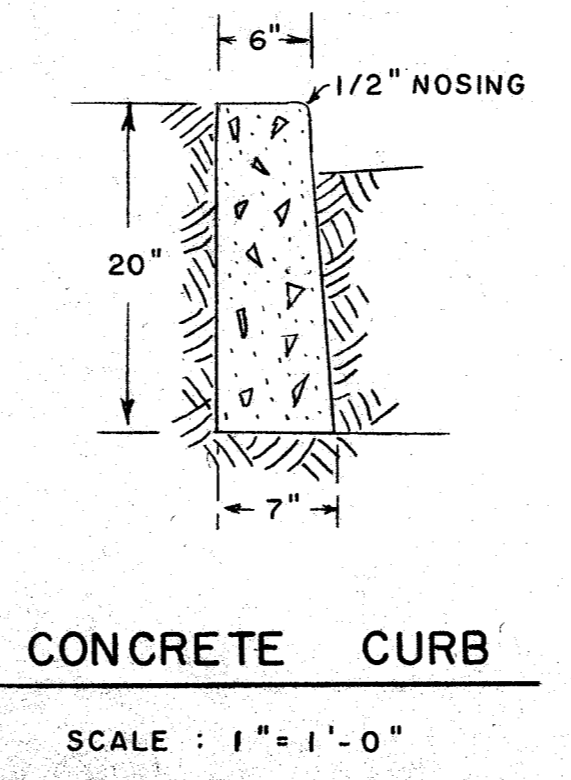
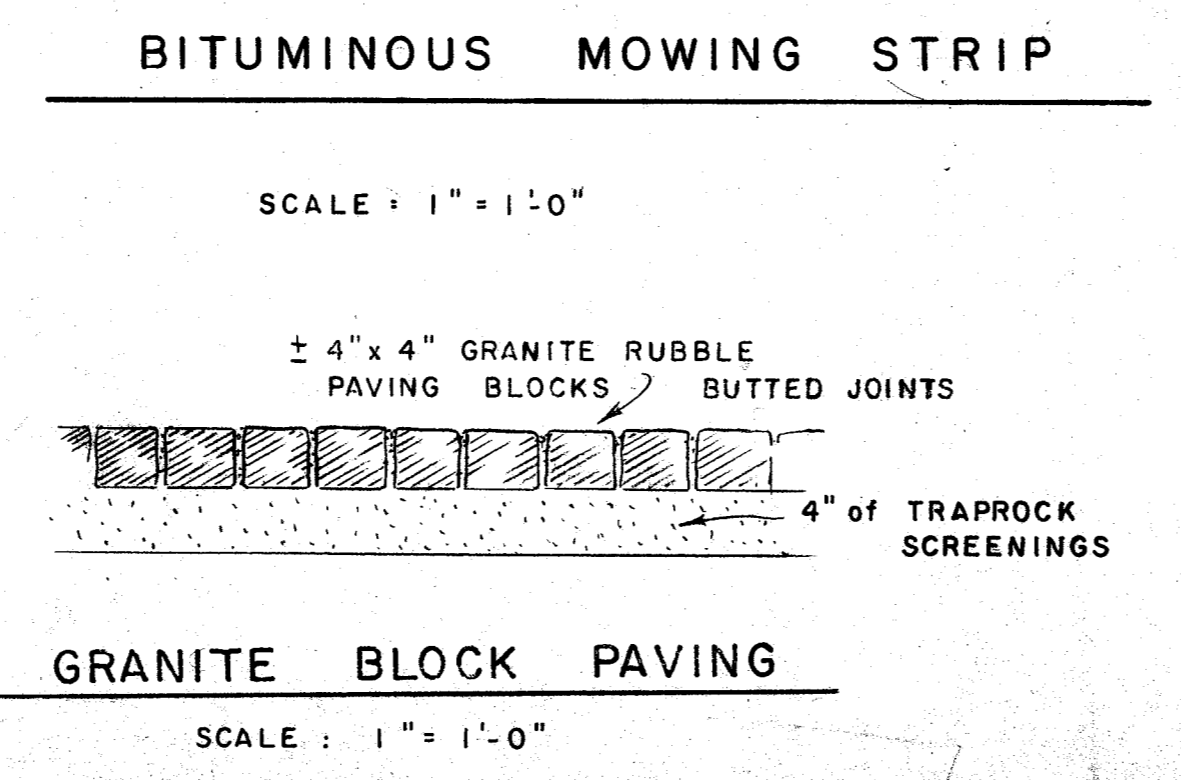
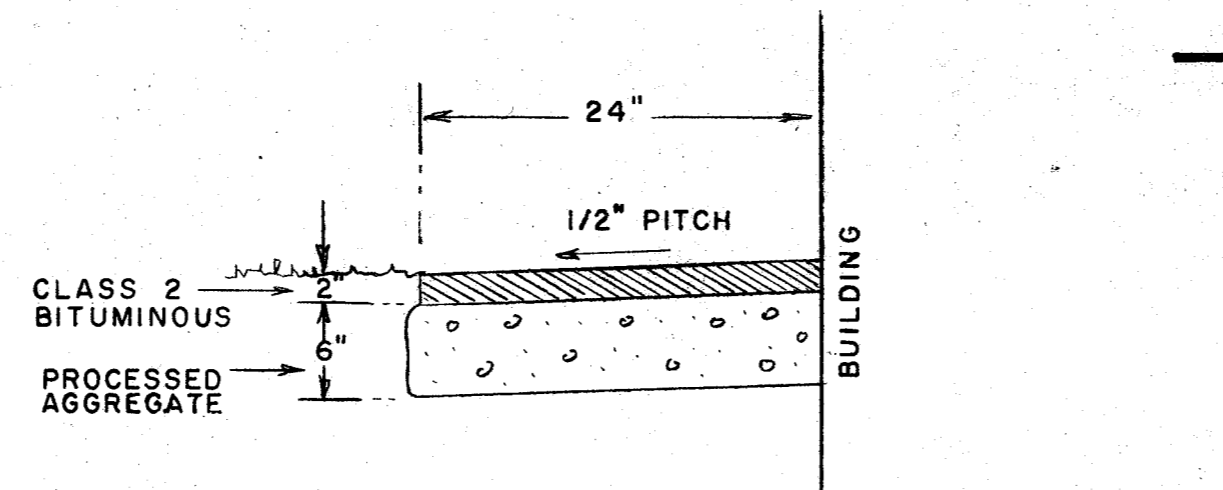
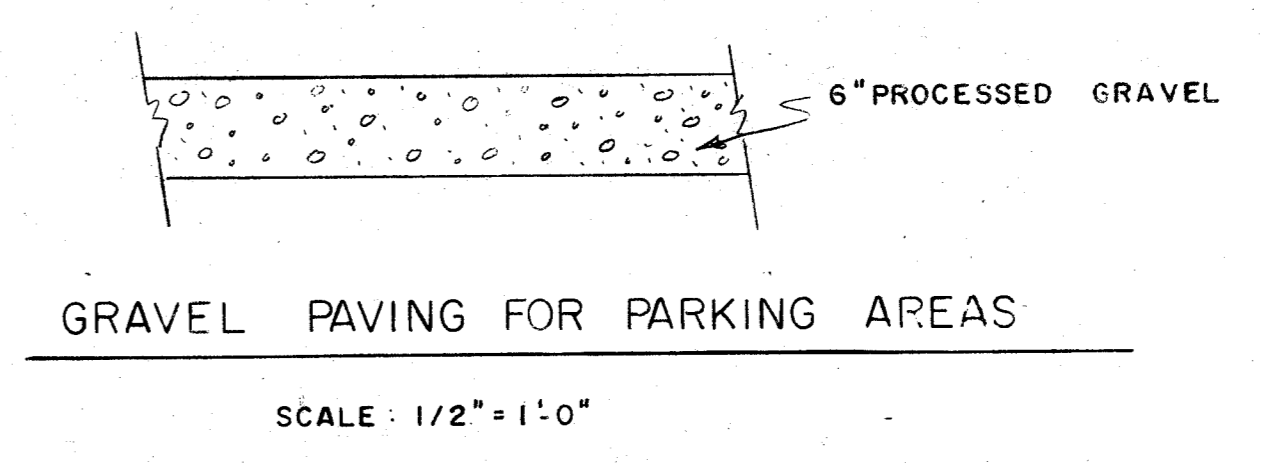
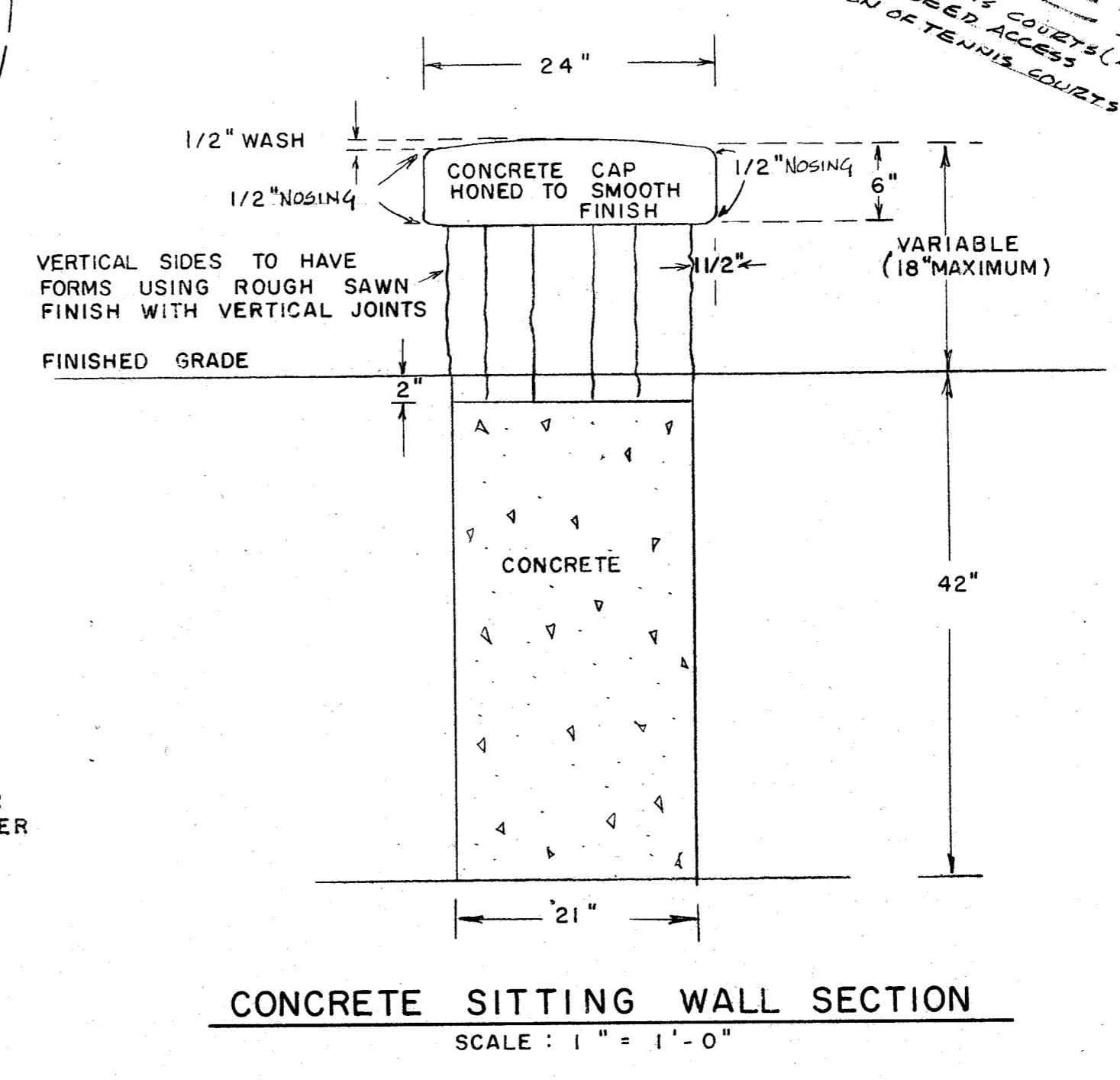
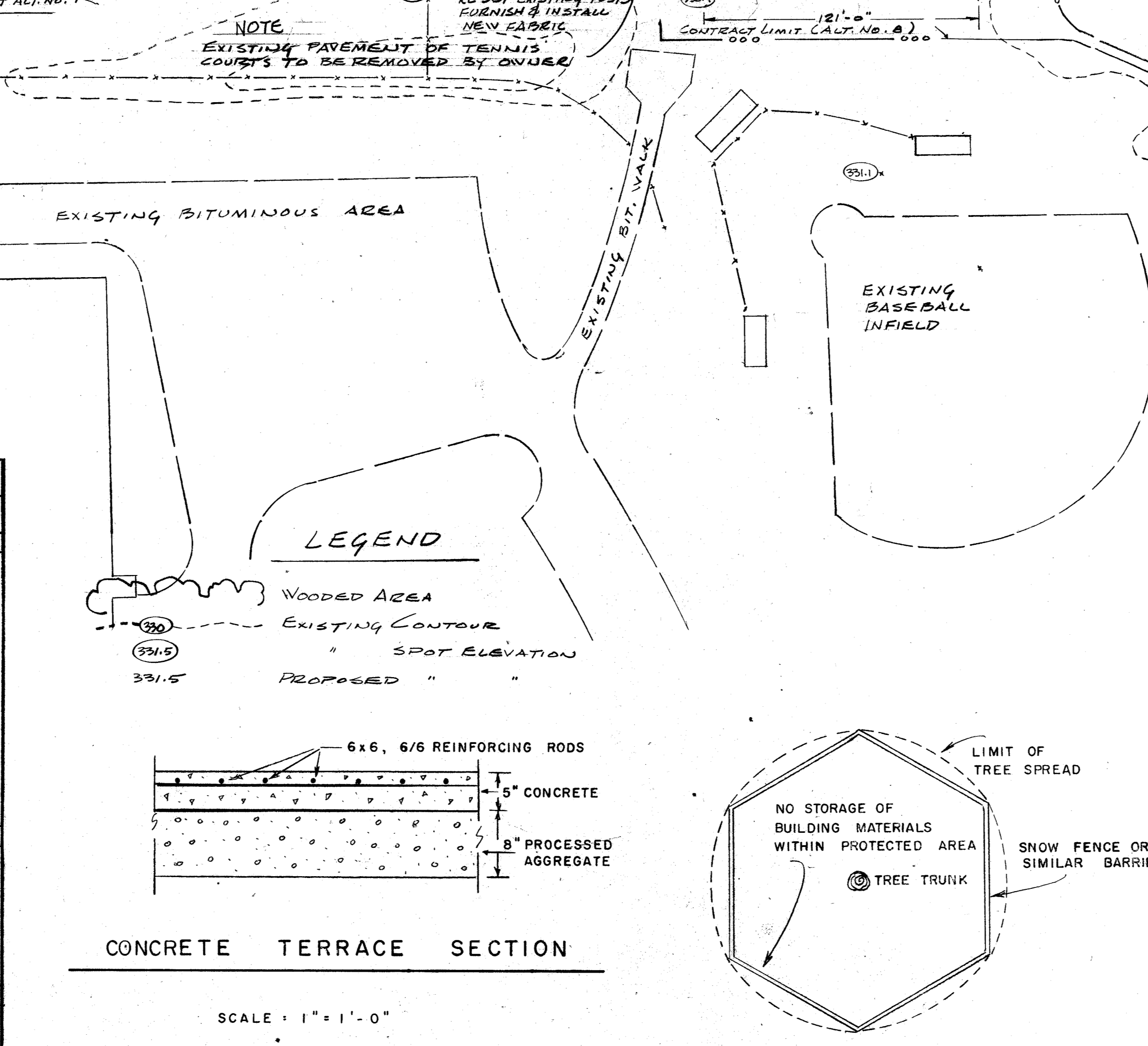
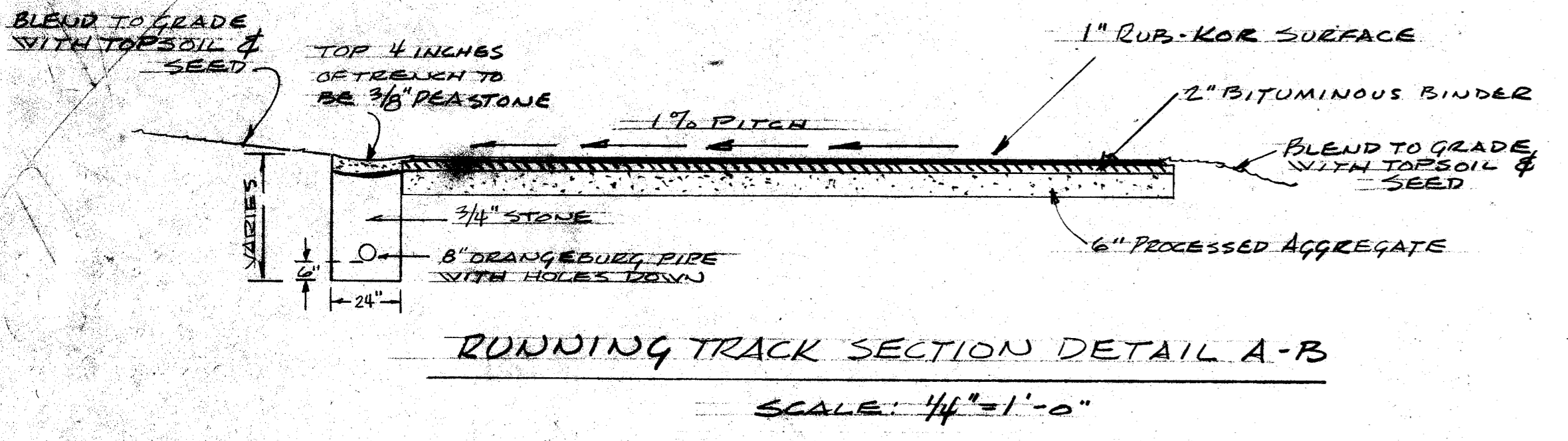
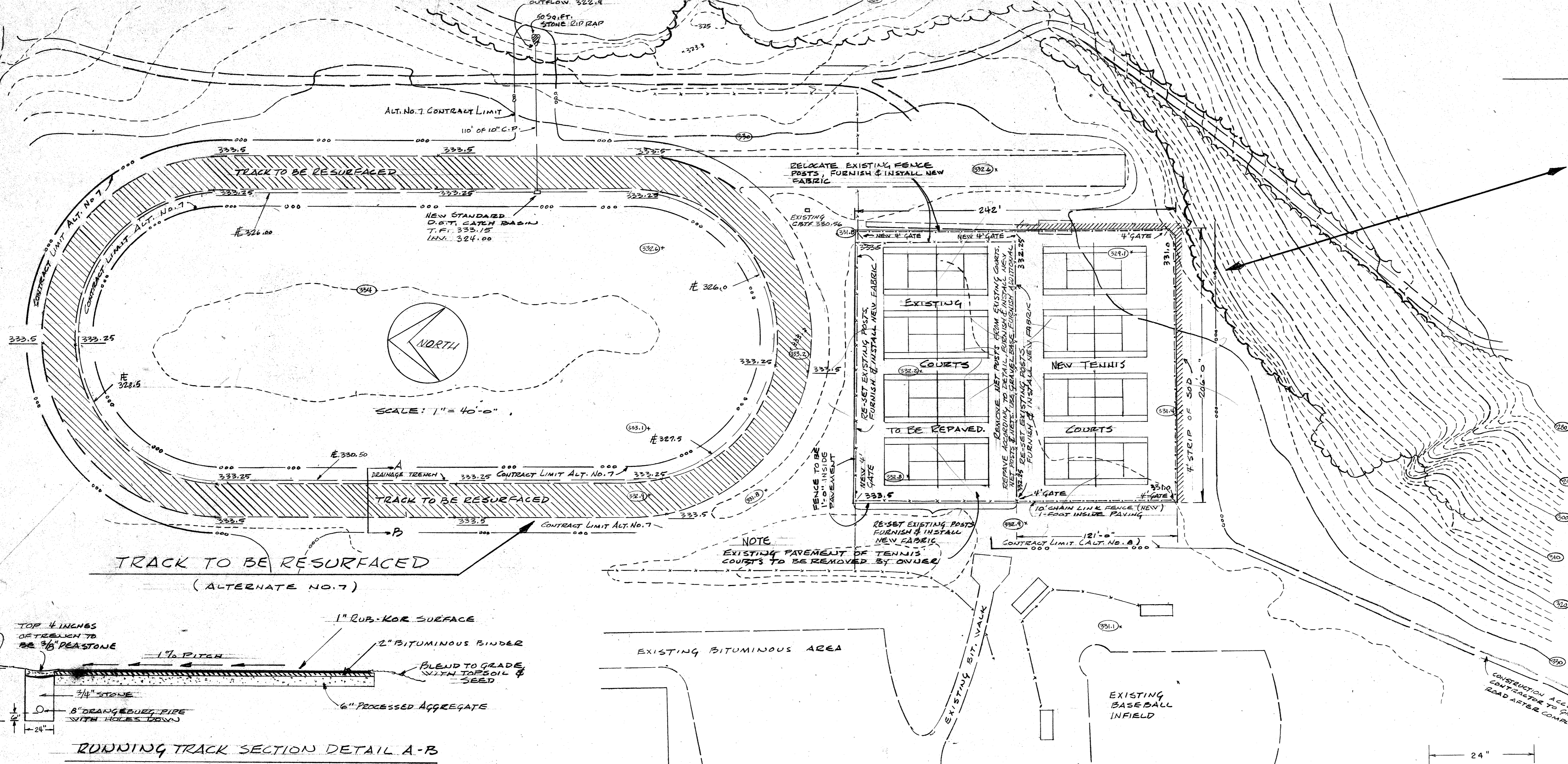
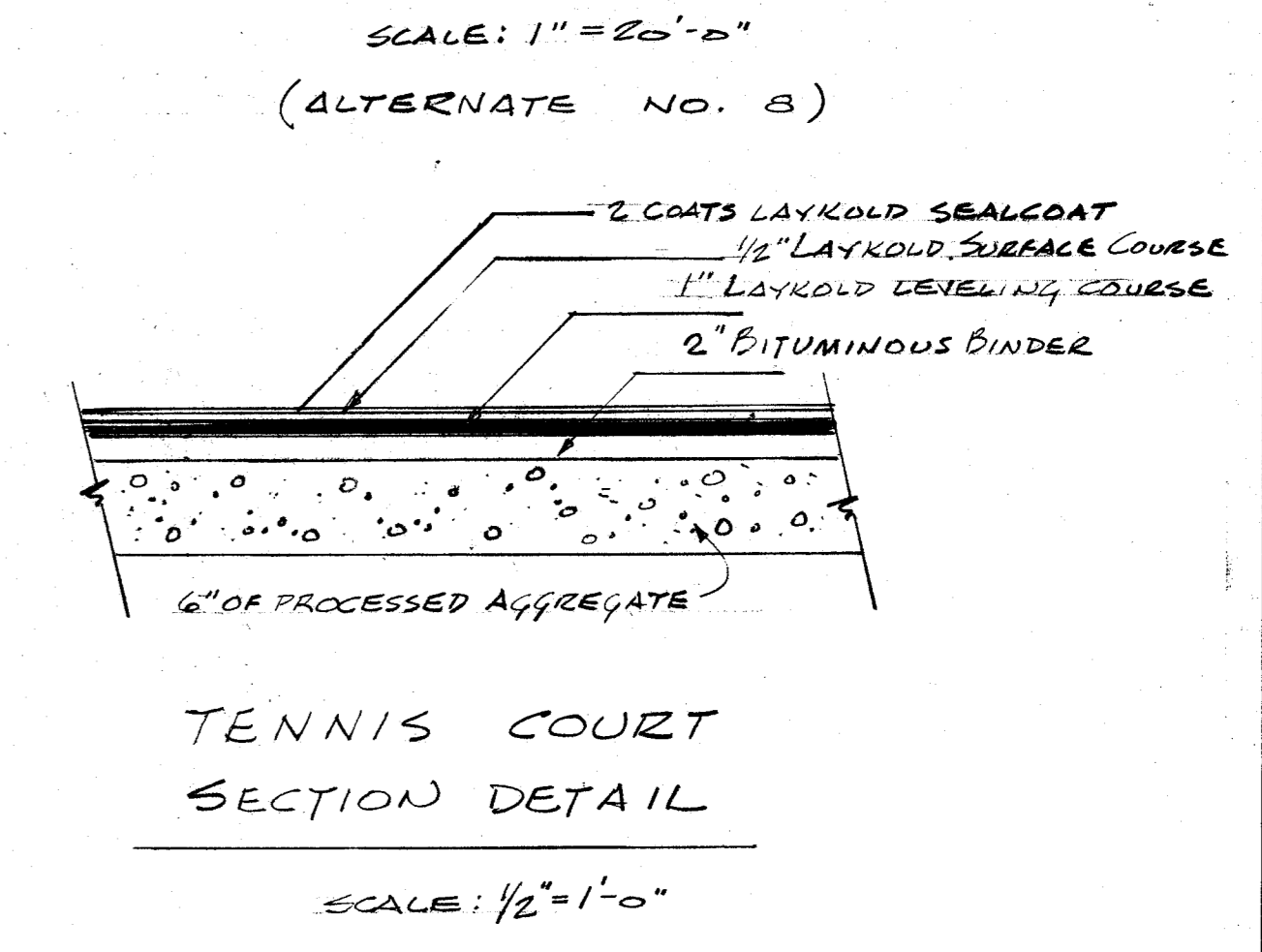
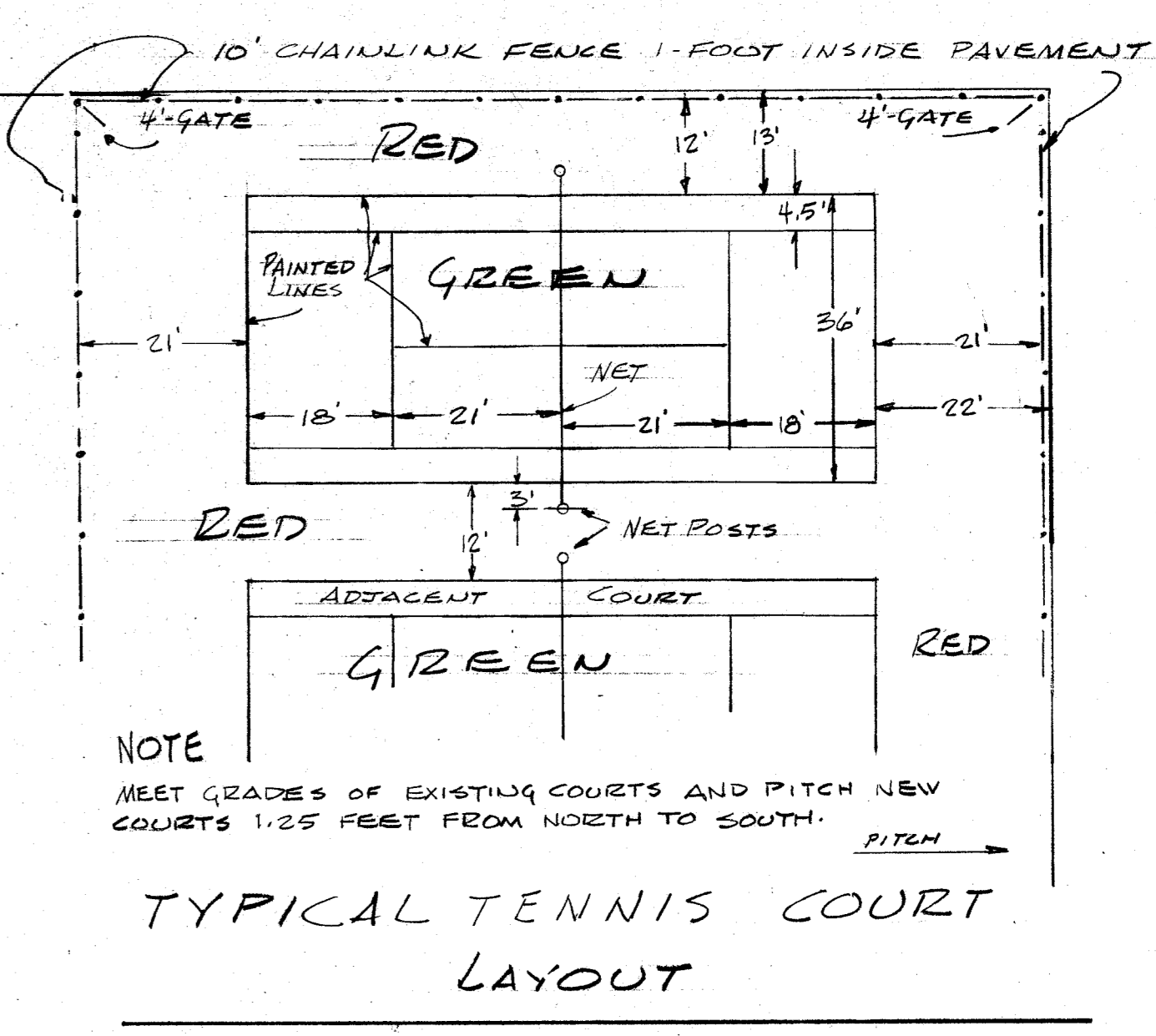
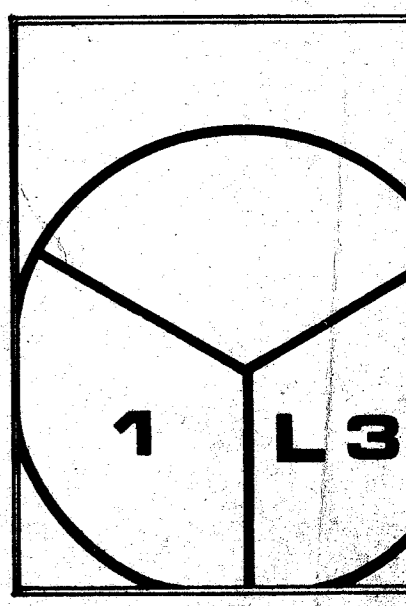
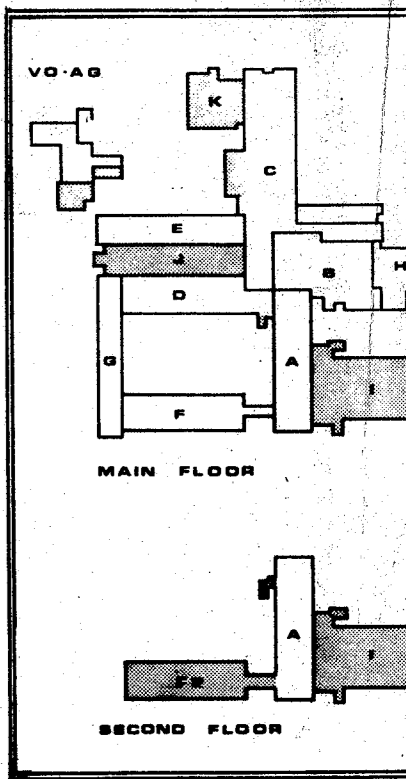
ROCKVILLE HIGH SCHOOL ADDITIONS AND ALTERATIONS
VERNON, CONNECTICUT

KAHN & BAYER - STRUCTURAL ENGINEERS
MORAN & HOJDE - MECHANICAL ENGINEERS
CLOSE, JENSEN & MILLER - SITE ENGINEERS
YARWOOD & BLOCK - LANDSCAPE ARCHITECTS

ROCKVILLE HIGH SCHOOL ADDITIONS AND ALTERATIONS
VERNON, CONNECTICUT

SITE DETAILS

this sheet



PLANT LIST					
ABBR.	BOTANICAL NAME	COMMON NAME	SIZE	QUANT.	ROOT
SOUTH ENTRANCE					
AM.L.	AMELANCHER LAEVIS	SHADBLow	10'-12' triple stem	3	B & B
AZ.V.	AZALEA VASEYI	PINKSHELL AZALEA	24"-30"	3	B & B
AZ.SCH.	AZALEA SCHLIPPENBACHI	ROYAL AZALEA	24"-30"	2	B & B
GUD.T.I.	GLEDTISIA TRIACANTHOS INERMIS	THORNLESS LOCUST	3"-3 1/2" col.	5	B & B
JN.A.	JUNIPERUS ANDORRA	ANDORRA JUNIPER	18"-24"	12	B & B
JN.S.	JUNIPERUS SARGENTI	SARGENT JUNIPER	15"-18"	48	B & B
K.L.	KALMIA LATIFOLIA	MT. LAUREL	18"-24"	24	B & B
MAL.S.	MALUS SARGENTI	SARGENT CRABAPPLE	2' col. 5' high	2	B & B
Q.C.	QUERCUS COCCINEA	SCARLET OAK	2 1/2" col.	1	B & B
SOR.A.	SORBUS ALNIFOLIA	KOREAN MOUNTAIN-ASH	12"	2	B & B
TX.C.N.	TAXUS CUSPIDATA NANA	DWARF JAPANESE YEW	18"-24"	21	B & B
COURT & WEST ENTRANCE					
AM.L.	AMELANCHER LAEVIS	SHADBLow	10'-12' triple stem	2	B & B
E.A.C.	EUONYMUS ALATUS COMPACTUS	DWARF WINGED EUONYMUS	18"-24"	40	B & B
JN.AND.	JUNIPERUS ANDORRA	ANDORRA JUNIPER	18"-24"	20	B & B
K.L.	KALMIA LATIFOLIA	MT. LAUREL	18"-24"	7	B & B
TX.C.N.	TAXUS CUSPIDATA NANA	DWARF JAPANESE YEW	18"-24"	28	B & B
NORTH ENTRANCE					
AZ.SCH.	AZALEA SCHLIPPENBACHI	ROYAL AZALEA	24"-30"	3	B & B
CRN.FL.	CORNUS FLORIDA	FLOWERING DOGWOOD	6'-8'	3	B & B
JN.A.	JUNIPERUS ANDORRA	ANDORRA JUNIPER	18"-24"	18	B & B
L.G.S.	LIQUIDAMBAR STYRACIFLUA	SWEET-GUM	2'-2 1/2" col.	4	B & B
PN.T.	PINUS THUNBERGI	BLACK PINE	6'-8'	3	B & B
NORTH PARKING AREA					
PN.T.	PINUS THUNBERGI	BLACK PINE	5'-6"	6	B & B
ENTRANCE DRIVE & SOUTH PARKING					
Q.C.	QUERCUS COCCINEA	SCARLET OAK	2'-2 1/2" col.	14	B & B

B & B = BALLED & BURLAPPED PLANT MATERIAL
FLD. GRN. = FIELD GROWN PLANT MATERIAL