



ENVIRONMENTAL • GEOTECHNICAL
BUILDING SCIENCES • MATERIALS TESTING

290 Roberts Street, Suite 301
East Hartford, CT 06108
Telephone 860-282-9924

www.atcassociates.com

February 27, 2020

Ms. Katherine Wissink, P.E.
Simpson Gumpertz & Heger
480 Totten Pond Road
Waltham, MA 02451

Re: Limited Survey for Asbestos-Containing Materials
Union Station – Roofing
1 Union Place
Hartford, CT 06105
ATC Project No. 15884.20.001

Dear Ms. Wissink:

February 3, 2020 through February 10, 2020, ATC Group Services, LLC (ATC) representative, Richard Regius conducted a limited survey consisting of a visual inspection, the use of bulk sample collection, and laboratory analysis to identify asbestos-containing materials (ACM) at the Union Station in advance of certain anticipated roof renovation activities. Mr. Regius is an accredited licensed Asbestos Inspector (CTDPH license #0001030). Mr. Regius collected bulk samples and conducted a visual inspection according to the methods outlined in the U.S. Environmental Protection Agency (EPA) guidance document titled, "Guidance for Controlling Asbestos-Containing Materials in Buildings" (Document No. 560/5-85/024) and 40 CFR § 763.86. Asbestos abatement must be performed by Connecticut Department of Public Health licensed Asbestos Abatement Contractors and must comply with all federal, state, and local laws and regulations regarding asbestos abatement.

Bulk samples collected during the inspection of the roofing were delivered to EMSL Analytical, Inc., in Wallingford, CT. All samples were analyzed by Polarized Light Microscopy (PLM), EPA 600/R-93/116 Method. The results of the analysis of the bulk samples collected are below. **A material is considered to be ACM if it contains greater than one percent (>1%) asbestos by PLM or TEM analysis.** Asbestos Bulk Sample Results and Chain of Custody documentation are enclosed with this letter.

SAMPLE NUMBER	MATERIAL	LOCATION	ASBESTOS (%)
021220-1A	30 lb. Black Felt Layer	CT4A	NAD*
021220-1B	30 lb. Black Felt Layer (Not Homogenous, Possible Tar Contamination)	CT3B	20% CH
021220-1C	30 lb. Black Felt Layer	CT2A	NAD*
021220-2A	Red Spanish Tile	CT3A	NAD
021220-2B	Red Spanish Tile	CT4B	NAD

SAMPLE NUMBER	MATERIAL	LOCATION	ASBESTOS (%)
021220-2C	Red Spanish Tile	CT2B	NAD
021220-3A	White Caulk on Dormer Apron	CT2B	NAD
021220-3B	White Caulk on Dormer Apron	CT2B	NAD
021220-4A	Clear Silicon Caulk on Dormer Wall	CT2B	NAD
021220-4B	Clear Silicon Caulk on Dormer Wall	CT2B	NAD
021220-5A	Black Roofing Mastic	Next to AS5A	12% CH
021220-5B	Black Roofing Mastic	Next to AS5A	15% CH
021220-6A	Black EPDM rubber w/Adhesive	BUR 1A	NAD
021220-6B	Black EPDM rubber w/Adhesive	BUR 1A	NAD
021220-7A	1.5" Black Poly ISO Layer	BUR 1A	NAD
021220-7B	1.5" Black Poly ISO Layer	BUR 1B	NAD
021220-8A	Adhesive on Plywood	BUR 1B	NAD
021220-8B	Adhesive on Plywood	BUR 1A	NAD
021220-9A	Black Felt Layer	FSC1-A	NAD
021220-9B	Black Felt Layer	FSC1-B	NAD
021220-10A	Black Mastic	FSC1 – Roof Exhaust	NAD*
021220-10B	Black Mastic	FSC1 – Roof Exhaust	NAD
021220-11A	Clear Silicon Caulk	FSC1 – Roof Exhaust	NAD
021220-11B	Clear Silicon Caulk	FSC1 – Roof Exhaust	NAD
021220-12A	Old Brown Skirt Flashing Caulk	FSC1 – Roof Penetration	NAD
021220-12B	Old Brown Skirt Flashing Caulk	FSC1 – Roof Penetration	0.35% AN*

SAMPLE NUMBER	MATERIAL	LOCATION	ASBESTOS (%)
021220-13A	Black Skirt Flashing Caulk	FSC1 – Roof Penetration	NAD
021220-13B	Black Skirt Flashing Caulk	FSC1 – Roof Penetration	NAD
021220-14A	Black/Brown EPDM Stripping Caulk	By FSC1-A	NAD
021220-14B	Black/Brown EPDM Stripping Caulk	By FSC1-C	NAD
021220-15A	Green Sealant	FSC1-B	NAD
021220-15B	Green Sealant	FSC1-A	NAD
021220-16A	Black EPDM Strip	FSC1-A	NAD
021220-16B	Black EPDM Strip	FSC1-C	NAD
021220-17A	Paper under Black Felt	AS2	NAD
021220-17B	Paper under Black Felt	AS2	NAD
021220-18A	Black Mastic on Stone	AS3 – Building Perimeter	10% CH
021220-18B	Black Mastic on Stone	AS3 – Building Perimeter	10% CH
021220-19A	Black/White Skirt Flashing Mastic	AS3 – Building Perimeter	0.12% AN*
021220-19B	Black/White Skirt Flashing Mastic	AS3 – Building Perimeter	NAD
021220-20A-Shingle	Red Asphalt Shingle	AS2	NAD
021220-20A-Tar	Red Asphalt Shingle (Tar)	AS2	NAD
021220-20B-Shingle	Red Asphalt Shingle	AS2	NAD
021220-20B-Tar	Red Asphalt Shingle (Tar)	AS2	NAD

SAMPLE NUMBER	MATERIAL	LOCATION	ASBESTOS (%)
021220-20C-Shingle	Red Asphalt Shingle	AS1	NAD
021220-20C-Tar	Red Asphalt Shingle (Tar)	AS1	NAD
021220-21A-Shingle	Red Asphalt 3 Tab Shingle	AS5-A	NAD
021220-21A-Tar	Red Asphalt 3 Tab Shingle (Tar)	AS5-A	NAD
021220-21B	Red Asphalt 3 Tab Shingle	AS5-B	NAD
021220-21C-Shingle	Red Asphalt 3 Tab Shingle	AS3-B	NAD
021220-21C-Tar	Red Asphalt 3 Tab Shingle (Tar)	AS3-B	NAD
021220-22A	15 lb. Black Felt	AS3-B	NAD
021220-22B	15 lb. Black Felt	AS5-A	NAD
021220-22C	15 lb. Black Felt	AS5-B	NAD
021220-23A	Black Felt	AS1	NAD
021220-23B	Black Felt	AS2	NAD
021220-23C	Black Felt	AS2	NAD
021220-24A	Black Mastic	EPDM1-B (Back of Parapet)	NAD*
021220-24B	Black Mastic	EPDM1-B (Back of Parapet)	NAD
021220-25A	Paper on Foam Insulation	EPDM-A	NAD
021220-25B	Paper on Foam Insulation	EPDM-C	NAD
021220-25C	Paper on Foam Insulation	EPDM-D	NAD
021220-26A	Black Asphalt Layer	EPDM-A	NAD
021220-26B	Black Asphalt Layer	EPDM-B	NAD

SAMPLE NUMBER	MATERIAL	LOCATION	ASBESTOS (%)
021220-26C	Black Asphalt Layer	EPDM-D	NAD
021220-27A	Cementitious Layer	EPDM-A	NAD
021220-27B	Cementitious Layer	EPDM-C	NAD
021220-27C	Cementitious Layer	EPDM-D	NAD
021220-28A	EPDM Layer	EPDM-A	NAD
021220-28B	EPDM Layer	EPDM-C	NAD
021220-28C	EPDM Layer	EPDM-D	NAD
021220-29A	Black Paper on Foam with Mastic	TR1-A	NAD
021220-29B	Black Paper on Foam with Mastic	TR1-B	NAD
021220-29C	Black Paper on Foam with Mastic	TR1-C	NAD
021220-29D	Black Paper on Foam with Mastic	TR1-D	NAD
021220-30A	Cement Paver	TR1-A	NAD
021220-30B	Cement Paver	TR1-B	NAD
021220-30C	Cement Paver	TR1-C	NAD
021220-30D	Cement Paver	TR1-D	NAD
021220-31A	Brown Cover Board with Black Mastic	TR1-A	NAD
021220-31B	Brown Cover Board with Black Mastic	TR1-B	NAD
021220-31C	Brown Cover Board with Black Mastic	TR1-C	NAD
021220-31D	Brown Cover Board with Black Mastic	TR1-D	NAD
021220-32A	Adhesive Layer – Black	TR1-A	NAD
021220-32B	Adhesive Layer – Black	TR1-B	NAD*
021220-32C	Adhesive Layer – Black	TR1-C	NAD*

SAMPLE NUMBER	MATERIAL	LOCATION	ASBESTOS (%)
021220-32D	Adhesive Layer – Black	TR1-D	NAD
021220-33A	Black Sealant on Structural Column	TR1-A	NAD
021220-33B	Black Sealant on Structural Column	TR1-B	NAD
021920-1A	30 lb. Black Felt	CT2-D	NAD
021920-1B	30 lb. Black Felt	CT4-B	NAD
021920-1C	30 lb. Black Felt	CT2-B	NAD
021920-1D	30 lb. Black Felt	CT2-C	NAD
021920-1E	30 lb. Black Felt	CT3-A	NAD

NAD = No Asbestos Detected

CH = Chrysotile

AN = Anthophyllite

*= Analyzed by TEM/NOB Method

Based on laboratory analysis, the following material sampled as part of this limited survey was found to be Asbestos Containing:

- 30 lb. Black Felt Layer (Possible Tar Contamination) – CT3 Roof (B Location)
- Black Roofing Mastic – Next to AS5 Roof (A Location)
- Black Mastic on Stone – AS3 Roof (Building Perimeter)

Based on laboratory analysis, the following material sampled as part of this limited survey was found to be <1% Asbestos Containing:

- Old Brown Skirt Flashing Caulk – Perimeter of Building (FSC1 Roof)
- Black/White Skirt Flashing Mastic – Perimeter of Building (AS3 Roof)

ATC did not access concealed spaces such as in walls or pipe chases and above fixed ceilings to identify concealed piping or other materials. Any hidden materials discovered during renovation activities not identified within this report should be assumed to be asbestos containing until laboratory analysis proves otherwise. Any materials within the building above the ceiling were not inspected. Often vibrations from roof replacement projects can affect materials within the building.

The Environmental Protection Agency (“EPA”) recognizes the following as asbestos: Chrysotile, Crocidolite, Amosite, Tremolite, Actinolite and Anthophyllite. To classify as ACM, the material must be determined to contain greater than one percent (1%) asbestos. In order to consider a material to be non-asbestos-containing, all samples of a homogeneous type of material that are collected must be analyzed and all results indicate as containing less than 1% asbestos by weight.

Asbestos abatement can only be performed by a CTDPH licensed Asbestos Abatement Contractor. The abatement contractor must comply with federal, state, and local laws and regulations, including but not limited to:

- State of Connecticut, Department of Public Health laws and regulations
- OSHA Regulation, 29 CFR § 1926.1101 (Asbestos)
- EPA Regulation, 40 CFR Part 61 (NESHAP)

Materials which contain less than one percent asbestos are not regulated by the CTDPH or EPA Regulation 40 CFR Part 61 (NESHAP), but are subject to the requirements of OSHA Regulation 29 CFR § 1926.1101 (Asbestos). Under OSHA, the employer (i.e., contractor) is responsible for the protection of its employees when performing construction and demolition work which disturbs materials containing identified asbestos. Contractors or personnel who may handle these materials must be notified of the presence and location of these materials. ATC recommends that these materials be removed by an asbestos abatement contractor.

Demolition and roofing contractors must also comply with the above-referenced OSHA and EPA regulations when conducting demolition or renovation activities of structures with intact exterior ACM.

Any hidden materials discovered during renovation activities not identified within this report should be assumed to be asbestos containing until laboratory analysis proves otherwise.

Prior to any activity which may disturb materials that were not sampled, ATC recommends sampling of such materials prior to disturbance.

EPA regulations require the removal of Regulated Asbestos-Containing Materials ("RACM") prior to renovation/demolition activities that may disturb the material. RACM is defined as (a) Friable asbestos material, (b) Category I non-friable ACM that has become friable, (c) Category I non-friable ACM that will be or has been subjected to sanding, grinding, cutting, or abrading, or (d) Category II non-friable ACM that has a high probability of becoming or has become crumbled, pulverized, or reduced to powder by the forces expected to act on the material in the course of demolition or renovation activities. The CTDPH defines "asbestos abatement" as removal, encapsulation, enclosure, renovation, repair, demolition or other disturbance of asbestos-containing materials. Asbestos abatement must be performed by a CTDPH licensed asbestos abatement contractor.

If you have any questions, please do not hesitate to contact me at (860) 466-6009.

Sincerely,

ATC Group Services LLC



Scott J. Johnson
Operations Manager

Encl.



EMSL Analytical, Inc.

29 North Plains Highway, Unit # 4 Wallingford, CT 06492

Tel/Fax: (203) 284-5948 / (203) 284-5978

<http://www.EMSL.com> / wallingfordlab@emsl.com

EMSL Order: 242001058

Customer ID: ATCE54

Customer PO: 19-10133-0001

Project ID:

Attention: Scott Johnson
ATC Group Services LLC
290 Roberts Street
East Hartford, CT 06108

Phone: (860) 282-9924

Fax: (860) 282-9826

Received Date: 02/13/2020 8:00 AM

Analysis Date: 02/15/2020 - 02/17/2020

Collected Date: 02/12/2020

Project: 1588420001/ UNION STATION, 1 UNION PLACE, HARTFORD, CT

Test Report: Asbestos Analysis of Bulk Materials via EPA 600/R-93/116 Method using Polarized Light Microscopy

Sample	Description	Appearance	Non-Asbestos		Asbestos
			% Fibrous	% Non-Fibrous	% Type
021220-1A <small>242001058-0001</small>	CT4A - 30LB BLACK FELT	Brown/Black Fibrous Homogeneous	25% Cellulose	5% Quartz 70% Non-fibrous (Other)	None Detected
021220-1B <small>242001058-0002</small>	CT3B - 30LB BLACK FELT	Brown/Black Fibrous Homogeneous	30% Cellulose	50% Non-fibrous (Other)	20% Chrysotile
<i>The sample group is not homogeneous.</i>					
021220-1C <small>242001058-0003</small>	CT2A - 30LB BLACK FELT	Brown/Black Fibrous Homogeneous	20% Cellulose	5% Quartz 75% Non-fibrous (Other)	None Detected
021220-2A <small>242001058-0004</small>	CT3A - RED SPANISH TILE	Red Non-Fibrous Homogeneous		10% Quartz 90% Non-fibrous (Other)	None Detected
021220-2B <small>242001058-0005</small>	CT4B - RED SPANISH TILE	Red Non-Fibrous Homogeneous		10% Quartz 90% Non-fibrous (Other)	None Detected
021220-2C <small>242001058-0006</small>	CT2B - RED SPANISH TILE	Red Non-Fibrous Homogeneous		8% Quartz 92% Non-fibrous (Other)	None Detected
021220-3A <small>242001058-0007</small>	CT2B - WHITE CAULK ON DORMER APPRON	Tan Non-Fibrous Homogeneous		100% Non-fibrous (Other)	None Detected
021220-3B <small>242001058-0008</small>	CT2B - WHITE CAULK ON DORMER APPRON	Tan Non-Fibrous Homogeneous		100% Non-fibrous (Other)	None Detected
021220-4A <small>242001058-0009</small>	CT2B - CLEAR SILICON CAULK ON DORMER WALL	Clear Non-Fibrous Homogeneous		100% Non-fibrous (Other)	None Detected
021220-4B <small>242001058-0010</small>	CT2B - CLEAR SILICON CAULK ON DORMER WALL	Clear Non-Fibrous Homogeneous		100% Non-fibrous (Other)	None Detected
021220-5A <small>242001058-0011</small>	NEXT TO AS5A - BLACK ROOFING MASTIC	Black Non-Fibrous Homogeneous		3% Quartz 85% Non-fibrous (Other)	12% Chrysotile
021220-5B <small>242001058-0012</small>	NEXT TO AS5A - BLACK ROOFING MASTIC	Black Non-Fibrous Homogeneous		85% Non-fibrous (Other)	15% Chrysotile
021220-6A <small>242001058-0013</small>	BUR 1A - BLACK EPDM RUBBER W/ADHESIVE	Black Non-Fibrous Homogeneous		100% Non-fibrous (Other)	None Detected
021220-6B <small>242001058-0014</small>	BUR 1A - BLACK EPDM RUBBER W/ADHESIVE	Black Non-Fibrous Homogeneous		100% Non-fibrous (Other)	None Detected
021220-7A <small>242001058-0015</small>	BUR 1A - 1.5" BLACK POLY ISO	Brown Fibrous Homogeneous	75% Cellulose 10% Glass	15% Non-fibrous (Other)	None Detected
021220-7B <small>242001058-0016</small>	BUR 1B - 1.5" BLACK POLY ISO	Brown Fibrous Homogeneous	70% Cellulose 2% Glass	28% Non-fibrous (Other)	None Detected

Initial report from: 02/17/2020 16:27:39



EMSL Analytical, Inc.

29 North Plains Highway, Unit # 4 Wallingford, CT 06492

Tel/Fax: (203) 284-5948 / (203) 284-5978

<http://www.EMSL.com> / wallingfordlab@emsl.com

EMSL Order: 242001058
Customer ID: ATCE54
Customer PO: 19-10133-0001
Project ID:

Test Report: Asbestos Analysis of Bulk Materials via EPA 600/R-93/116 Method using Polarized Light Microscopy

Sample	Description	Appearance	Non-Asbestos		Asbestos
			% Fibrous	% Non-Fibrous	% Type
021220-8A <small>242001058-0017</small>	BUR 1B - ADHESIVE ON PLYWOOD	Brown Non-Fibrous Homogeneous	5% Cellulose	95% Non-fibrous (Other)	None Detected
021220-8B <small>242001058-0018</small>	BUR 1A - ADHESIVE ON PLYWOOD	Brown Non-Fibrous Homogeneous	10% Cellulose	90% Non-fibrous (Other)	None Detected
021220-9A <small>242001058-0019</small>	FSC1-A - BLACK FELT	Black Fibrous Homogeneous	70% Cellulose	30% Non-fibrous (Other)	None Detected
021220-9B <small>242001058-0020</small>	FSC1-B - BLACK FELT	Black Fibrous Homogeneous	75% Cellulose	25% Non-fibrous (Other)	None Detected
021220-10A <small>242001058-0021</small>	FSC1 ROOF EXHAUST - BLACK MASTIC	Black Non-Fibrous Homogeneous	15% Cellulose	85% Non-fibrous (Other)	None Detected
021220-10B <small>242001058-0022</small>	FSC1 ROOF EXHAUST - BLACK MASTIC	Black Non-Fibrous Homogeneous	15% Cellulose	85% Non-fibrous (Other)	None Detected
021220-11A <small>242001058-0023</small>	FSC1 ROOF EXHAUST - CLEAR SILICON CAULK	Clear Non-Fibrous Homogeneous		100% Non-fibrous (Other)	None Detected
021220-11B <small>242001058-0024</small>	FSC1 ROOF EXHAUST - CLEAR SILICON CAULK	Clear Non-Fibrous Homogeneous		100% Non-fibrous (Other)	None Detected
021220-12A <small>242001058-0025</small>	FSC1 ROOF PERIMETER OF BUILDING - OLD BROWN SKIRT FLASHING CAULK	Brown Non-Fibrous Homogeneous		100% Non-fibrous (Other)	None Detected
021220-12B <small>242001058-0026</small>	FSC1 ROOF PERIMETER OF BUILDING - OLD BROWN SKIRT FLASHING CAULK	Black Non-Fibrous Homogeneous		100% Non-fibrous (Other)	None Detected
021220-13A <small>242001058-0027</small>	FSC1 ROOF PERIMETER OF BUILDING - BLACK SKIRT FLASHING CAULK	Black Non-Fibrous Homogeneous	15% Cellulose	85% Non-fibrous (Other)	None Detected
021220-13B <small>242001058-0028</small>	FSC1 ROOF PERIMETER OF BUILDING - BLACK SKIRT FLASHING CAULK	Black Non-Fibrous Homogeneous	20% Cellulose	80% Non-fibrous (Other)	None Detected
021220-14A <small>242001058-0029</small>	FY FSC1-A - BLACK BROWN EPDM STRIPPING CAULK	Black Non-Fibrous Homogeneous	15% Cellulose	85% Non-fibrous (Other)	None Detected
021220-14B <small>242001058-0030</small>	FY FSC1-C - BLACK BROWN EPDM STRIPPING CAULK	Black Non-Fibrous Homogeneous	15% Cellulose	85% Non-fibrous (Other)	None Detected
021220-15A <small>242001058-0031</small>	FY FSC1-B - GREEN SEALENT	Green Non-Fibrous Homogeneous		100% Non-fibrous (Other)	None Detected
021220-15B <small>242001058-0032</small>	FY FSC1-A - GREEN SEALENT	Green Non-Fibrous Homogeneous		100% Non-fibrous (Other)	None Detected

Initial report from: 02/17/2020 16:27:39



EMSL Analytical, Inc.

29 North Plains Highway, Unit # 4 Wallingford, CT 06492

Tel/Fax: (203) 284-5948 / (203) 284-5978

<http://www.EMSL.com> / wallingfordlab@emsl.com

EMSL Order: 242001058
Customer ID: ATCE54
Customer PO: 19-10133-0001
Project ID:

Test Report: Asbestos Analysis of Bulk Materials via EPA 600/R-93/116 Method using Polarized Light Microscopy

Sample	Description	Appearance	Non-Asbestos		Asbestos
			% Fibrous	% Non-Fibrous	% Type
021220-16A <small>242001058-0033</small>	FY FSC1-A - BLACK EPDM STRIP	Black Non-Fibrous Homogeneous		100% Non-fibrous (Other)	None Detected
021220-16B <small>242001058-0034</small>	FY FSC1-C - BLACK EPDM STRIP	Black Non-Fibrous Homogeneous		100% Non-fibrous (Other)	None Detected
021220-17A <small>242001058-0035</small>	AS-2 - PAPER UNDER FELT	Tan Fibrous Homogeneous	85% Cellulose	15% Non-fibrous (Other)	None Detected
021220-17B <small>242001058-0036</small>	AS-2 - PAPER UNDER FELT	Tan Fibrous Homogeneous	90% Cellulose	10% Non-fibrous (Other)	None Detected
021220-18A <small>242001058-0037</small>	AS3 BLDING PERIMTER - BLACK MASTIC ON STONE	Black Non-Fibrous Homogeneous		90% Non-fibrous (Other)	10% Chrysotile
021220-18B <small>242001058-0038</small>	AS3 BLDING PERIMTER - BLACK MASTIC ON STONE	Black Non-Fibrous Homogeneous		90% Non-fibrous (Other)	10% Chrysotile
021220-19A <small>242001058-0039</small>	AS3 BLDING PERIMTER - BLACK/WHITE SKIRT FLASHING MASTIC	Gray Non-Fibrous Homogeneous		100% Non-fibrous (Other)	None Detected
021220-19B <small>242001058-0040</small>	AS3 BLDING PERIMTER - BLACK/WHITE SKIRT FLASHING MASTIC	Brown/Gray Non-Fibrous Homogeneous	5% Fibrous (Other)	95% Non-fibrous (Other)	None Detected
021220-20A-Shingle <small>242001058-0041</small>	AS2 - RED SHINGLE	Black Fibrous Homogeneous	15% Glass	5% Quartz 80% Non-fibrous (Other)	None Detected
021220-20A-Tar <small>242001058-0041A</small>	AS2 - RED SHINGLE	Black Non-Fibrous Homogeneous		100% Non-fibrous (Other)	None Detected
021220-20B-Shingle <small>242001058-0042</small>	AS2 - RED SHINGLE	Black Fibrous Homogeneous	15% Glass	5% Quartz 80% Non-fibrous (Other)	None Detected
021220-20B-Tar <small>242001058-0042A</small>	AS2 - RED SHINGLE	Black Non-Fibrous Homogeneous		100% Non-fibrous (Other)	None Detected
021220-20C-Shingle <small>242001058-0043</small>	AS1 - RED SHINGLE	Black Fibrous Homogeneous	15% Glass	5% Quartz 80% Non-fibrous (Other)	None Detected
021220-20C-Tar <small>242001058-0043A</small>	AS1 - RED SHINGLE	Black Non-Fibrous Homogeneous		100% Non-fibrous (Other)	None Detected
021220-21A-Shingle <small>242001058-0044</small>	AS5-A - RED 3 TAB SHINGLE	Black Fibrous Homogeneous	15% Glass	7% Quartz 78% Non-fibrous (Other)	None Detected
021220-21A-Tar <small>242001058-0044A</small>	AS5-A - RED 3 TAB SHINGLE	Black Non-Fibrous Homogeneous		100% Non-fibrous (Other)	None Detected
021220-21B <small>242001058-0045</small>	AS5-B - RED 3 TAB SHINGLE	Black Fibrous Homogeneous	15% Glass	7% Quartz 78% Non-fibrous (Other)	None Detected
021220-21C-Shingle <small>242001058-0046</small>	AS3-B - RED 3 TAB SHINGLE	Black Fibrous Homogeneous	15% Glass	5% Quartz 80% Non-fibrous (Other)	None Detected

Initial report from: 02/17/2020 16:27:39



EMSL Analytical, Inc.

29 North Plains Highway, Unit # 4 Wallingford, CT 06492

Tel/Fax: (203) 284-5948 / (203) 284-5978

<http://www.EMSL.com> / wallingfordlab@emsl.com

EMSL Order: 242001058
Customer ID: ATCE54
Customer PO: 19-10133-0001
Project ID:

Test Report: Asbestos Analysis of Bulk Materials via EPA 600/R-93/116 Method using Polarized Light Microscopy

Sample	Description	Appearance	Non-Asbestos		Asbestos
			% Fibrous	% Non-Fibrous	% Type
021220-21C-Tar <small>242001058-0046A</small>	AS3-B - RED 3 TAB SHINGLE	Black Non-Fibrous Homogeneous		100% Non-fibrous (Other)	None Detected
021220-22A <small>242001058-0047</small>	AS-B - 15LB FELT	Black Fibrous Homogeneous	75% Cellulose	25% Non-fibrous (Other)	None Detected
021220-22B <small>242001058-0048</small>	AS5-A - 15LB FELT	Black Fibrous Homogeneous	75% Cellulose	25% Non-fibrous (Other)	None Detected
021220-22C <small>242001058-0049</small>	AS5-B - 15LB FELT	Black Fibrous Homogeneous	70% Cellulose	30% Non-fibrous (Other)	None Detected
021220-23A <small>242001058-0050</small>	AS5-1 - BLACK FELT	Black Fibrous Homogeneous	75% Cellulose	25% Non-fibrous (Other)	None Detected
021220-23B <small>242001058-0051</small>	AS5-2 - BLACK FELT	Black Fibrous Homogeneous	75% Cellulose	25% Non-fibrous (Other)	None Detected
021220-23C <small>242001058-0052</small>	AS5-2 - BLACK FELT	Black Fibrous Homogeneous	70% Cellulose	30% Non-fibrous (Other)	None Detected
021220-24A <small>242001058-0053</small>	EPDM 1-B BACK OF PARAPIT - BLACK MASTIC	Black Non-Fibrous Homogeneous	5% Cellulose	95% Non-fibrous (Other)	None Detected
021220-24B <small>242001058-0054</small>	EPDM 1-B BACK OF PARAPIT - BLACK MASTIC	Black Non-Fibrous Homogeneous	5% Cellulose	95% Non-fibrous (Other)	None Detected
021220-25A <small>242001058-0055</small>	EDPM-A - PAPER ON FOAM	Tan/Silver Fibrous Homogeneous	70% Cellulose	30% Non-fibrous (Other)	None Detected
021220-25B <small>242001058-0056</small>	EDPM-C - PAPER ON FOAM	Tan/Silver Fibrous Homogeneous	70% Cellulose	30% Non-fibrous (Other)	None Detected
021220-25C <small>242001058-0057</small>	EDPM-D - PAPER ON FOAM	Tan/Silver Fibrous Homogeneous	75% Cellulose	25% Non-fibrous (Other)	None Detected
021220-26A <small>242001058-0058</small>	EDPM-A - BLACK ASPHALT	Black Fibrous Homogeneous	15% Cellulose 10% Synthetic	75% Non-fibrous (Other)	None Detected
021220-26B <small>242001058-0059</small>	EDPM-B - BLACK ASPHALT	Black Fibrous Homogeneous	15% Cellulose 10% Synthetic	75% Non-fibrous (Other)	None Detected
021220-26C <small>242001058-0060</small>	EDPM-D - BLACK ASPHALT	Black Non-Fibrous Homogeneous		100% Non-fibrous (Other)	None Detected
021220-27A <small>242001058-0061</small>	EDPM-A - CEMENT	Gray Non-Fibrous Homogeneous	2% Cellulose	2% Quartz 96% Non-fibrous (Other)	None Detected
021220-27B <small>242001058-0062</small>	EDPM-C - CEMENT	Gray Non-Fibrous Homogeneous	8% Cellulose	92% Non-fibrous (Other)	None Detected
021220-27C <small>242001058-0063</small>	EDPM-D - CEMENT	Gray Non-Fibrous Homogeneous	4% Cellulose	2% Quartz 94% Non-fibrous (Other)	None Detected
021220-28A <small>242001058-0064</small>	EDPM-A - EPDM	Black Non-Fibrous Homogeneous		100% Non-fibrous (Other)	None Detected

Initial report from: 02/17/2020 16:27:39



EMSL Analytical, Inc.

29 North Plains Highway, Unit # 4 Wallingford, CT 06492

Tel/Fax: (203) 284-5948 / (203) 284-5978

<http://www.EMSL.com> / wallingfordlab@emsl.com

EMSL Order: 242001058
Customer ID: ATCE54
Customer PO: 19-10133-0001
Project ID:

Test Report: Asbestos Analysis of Bulk Materials via EPA 600/R-93/116 Method using Polarized Light Microscopy

Sample	Description	Appearance	Non-Asbestos		Asbestos
			% Fibrous	% Non-Fibrous	% Type
021220-28B 242001058-0065	EDPM-C - EPDM	Black Non-Fibrous Homogeneous		100% Non-fibrous (Other)	None Detected
021220-28C 242001058-0066	EDPM-D - EPDM	Black Non-Fibrous Homogeneous		100% Non-fibrous (Other)	None Detected
021220-29A 242001058-0067	TR1-A - BLACK PAPER ON FOAM W/MASTIC	Black Fibrous Homogeneous	70% Cellulose	30% Non-fibrous (Other)	None Detected
021220-29B 242001058-0068	TR1-B - BLACK PAPER ON FOAM W/MASTIC	Black Fibrous Homogeneous	70% Cellulose	30% Non-fibrous (Other)	None Detected
021220-29C 242001058-0069	TR1-C - BLACK PAPER ON FOAM W/MASTIC	Black Fibrous Homogeneous	70% Cellulose 5% Glass	25% Non-fibrous (Other)	None Detected
021220-29D 242001058-0070	TR1-D - BLACK PAPER ON FOAM W/MASTIC	Black Fibrous Homogeneous	70% Cellulose 5% Glass	25% Non-fibrous (Other)	None Detected
021220-30A 242001058-0071	TR1-A - CONCRETE PAPER	Gray Non-Fibrous Homogeneous		10% Quartz 90% Non-fibrous (Other)	None Detected
021220-30B 242001058-0072	TR1-B - CONCRETE PAPER	Gray Non-Fibrous Homogeneous		10% Quartz 90% Non-fibrous (Other)	None Detected
021220-30C 242001058-0073	TR1-C - CONCRETE PAPER	Gray Non-Fibrous Homogeneous		10% Quartz 90% Non-fibrous (Other)	None Detected
021220-30D 242001058-0074	TR1-D - CONCRETE PAPER	Gray Non-Fibrous Homogeneous		10% Quartz 90% Non-fibrous (Other)	None Detected
021220-31A 242001058-0075	TR1-A - BROWN COVER BOARD W/BLACK MASTIC	Brown/Black Fibrous Homogeneous	70% Cellulose	30% Non-fibrous (Other)	None Detected
021220-31B 242001058-0076	TR1-B - BROWN COVER BOARD W/BLACK MASTIC	Brown/Black Fibrous Homogeneous	70% Cellulose	30% Non-fibrous (Other)	None Detected
021220-31C 242001058-0077	TR1-C - BROWN COVER BOARD W/BLACK MASTIC	Brown/Black Fibrous Homogeneous	70% Cellulose	30% Non-fibrous (Other)	None Detected
021220-31D 242001058-0078	TR1-D - BROWN COVER BOARD W/BLACK MASTIC	Brown/Black Fibrous Homogeneous	70% Cellulose	30% Non-fibrous (Other)	None Detected
021220-32A 242001058-0079	TR1-A - ADHESIVE LAYER	Black Non-Fibrous Homogeneous	4% Cellulose	96% Non-fibrous (Other)	None Detected
021220-32B 242001058-0080	TR1-B - ADHESIVE LAYER	Black Non-Fibrous Homogeneous	4% Cellulose	96% Non-fibrous (Other)	None Detected
021220-32C 242001058-0081	TR1-C - ADHESIVE LAYER	Black Non-Fibrous Homogeneous	5% Cellulose 3% Glass	2% Quartz 90% Non-fibrous (Other)	None Detected
021220-32D 242001058-0082	TR1-D - ADHESIVE LAYER	Black Non-Fibrous Homogeneous	5% Cellulose 3% Glass	2% Quartz 90% Non-fibrous (Other)	None Detected

Initial report from: 02/17/2020 16:27:39



EMSL Analytical, Inc.

29 North Plains Highway, Unit # 4 Wallingford, CT 06492

Tel/Fax: (203) 284-5948 / (203) 284-5978

<http://www.EMSL.com> / wallingfordlab@emsl.com

EMSL Order: 242001058
Customer ID: ATCE54
Customer PO: 19-10133-0001
Project ID:

Test Report: Asbestos Analysis of Bulk Materials via EPA 600/R-93/116 Method using Polarized Light Microscopy

Sample	Description	Appearance	Non-Asbestos		Asbestos
			% Fibrous	% Non-Fibrous	% Type
021220-33A <small>242001058-0083</small>	TR1-A - BLACK SEALANT ON STRUCTURAL COLUMN	Black Non-Fibrous Homogeneous		100% Non-fibrous (Other)	None Detected
021220-33B <small>242001058-0084</small>	TR1-B - BLACK SEALANT ON STRUCTURAL COLUMN	Black Non-Fibrous Homogeneous		100% Non-fibrous (Other)	None Detected

Analyst(s)

Angela Catalano (25)
 Kelsey Duffy (15)
 Leslie Tetrick (32)
 Tara Svendsen (17)

Danny Sandhu, Asbestos Laboratory Manager
 or Other Approved Signatory

EMSL maintains liability limited to cost of analysis. The above analyses were performed in general compliance with Appendix E to Subpart E of 40 CFR (previously EPA 600/M4-82-020 "Interim Method"), but augmented with procedures outlined in the 1993 ("final") version of the method. This report relates only to the samples reported above, and may not be reproduced, except in full, without written approval by EMSL. EMSL bears no responsibility for sample collection activities or analytical method limitations. Interpretation and use of test results are the responsibility of the client. All samples received in acceptable condition unless otherwise noted. This report must not be used by the client to claim product certification, approval, or endorsement by NVLAP, NIST or any agency of the federal government. EMSL recommends gravimetric reduction for all non-friable organically bound materials prior to analysis. Estimation of uncertainty is available on request.

Samples analyzed by EMSL Analytical, Inc. Wallingford, CT NVLAP Lab Code 200700-0,

Initial report from: 02/17/2020 16:27:39



EMSL Analytical, Inc.

29 North Plains Highway, Unit # 4 Wallingford, CT 06492

Tel/Fax: (203) 284-5948 / (203) 284-5978

<http://www.EMSL.com> / wallingfordlab@emsl.com

EMSL Order: 242001058
Customer ID: ATCE54
Customer PO: 19-10133-0001
Project ID:

Attention: Scott Johnson ATC Group Services LLC 290 Roberts Street Suite 301 East Hartford, CT 06108	Phone: (860) 282-9924 Fax: (860) 282-9826 Received Date: 02/13/2020 8:00 AM Analysis Date: 02/21/2020 Collected Date: 02/12/2020
Project: 1588420001/ UNION STATION, 1 UNION PLACE, HARTFORD, CT	

Test Report: Asbestos Analysis of Non-Friable Organically Bound Materials by TEM via EPA/600/R-93/116 Section 2.5.5.1

Sample ID	Description	Appearance	% Matrix Material	% Non-Asbestos Fibers	Asbestos Types
021220-1A 242001058-0001	CT4A - 30LB BLACK FELT	Brown/Black Fibrous Heterogeneous	100.0 Other	None	No Asbestos Detected
021220-1C 242001058-0003	CT2A - 30LB BLACK FELT	Brown/Black Fibrous Heterogeneous	100.0 Other	None	No Asbestos Detected
021220-10A 242001058-0021	FSC1 ROOF EXHAUST - BLACK MASTIC	Black Fibrous Heterogeneous	100.0 Other	None	No Asbestos Detected
021220-12B 242001058-0026	FSC1 ROOF PERIMETER OF BUILDING - OLD BROWN SKIRT FLASHING CAULK	Black Fibrous Heterogeneous	99.65 Other	None	0.35% Anthophyllite
021220-19A 242001058-0039	AS3 BLDG PERIMTER - BLACK/WHITE SKIRT FLASHING MASTIC	Gray Fibrous Homogeneous	99.88 Other	None	0.12% Anthophyllite
021220-24A 242001058-0053	EPDM 1-B BACK OF PARAPIT - BLACK MASTIC	Black Fibrous Heterogeneous	100.0 Other	None	No Asbestos Detected
021220-32B 242001058-0080	TR1-B - ADHESIVE LAYER	Black Fibrous Heterogeneous	100.0 Other	None	No Asbestos Detected
021220-32C 242001058-0081	TR1-C - ADHESIVE LAYER	Black Fibrous Heterogeneous	100.0 Other	None	No Asbestos Detected

Analyst(s)

Danny Sandhu (8)

Danny Sandhu, Asbestos Laboratory
Manager
or other approved signatory

This laboratory is not responsible for % asbestos in total sample when the residue only is submitted for analysis. The above report relates only to the items tested. This report may not be reproduced, except in full, without written approval by EMSL Analytical, Inc. Samples received in good condition unless otherwise noted. Unless requested by the client, building materials manufactured with multiple layers (i.e. linoleum, wallboard, etc.) are reported as a single sample.

Samples analyzed by EMSL Analytical, Inc. Wallingford, CT

Initial report from: 02/21/2020 11:11:52



BULK SAMPLE LOG

242001058

Page 1 of 1
 290 Roberts Street, Suite 301
 East Hartford, CT 06108
 (860) 282-9924

ATC Inspector: Ricky Regis Client Name: Simpson Gumpert & Hegel

Accreditation No.: 1030 Project No./Task No.: 1588420001

Survey Date: 2-12-20 Project Manager: Scott Johnson

Signature: _____ Requested Completion Date: _____

Lab Name: EMSL Requested turnaround time (circle): 3 HR 6 HR 24 HR 48 HR 3 DY 5 DY No. Samples Collected: 24

Building: Union Station Address: 1 Union Place, Hartford, CT

Location	Material Description	Type S	TSI	MISC	Estimated Quantity	Friable Y/N	Condition (SD D ND)	Sample of homogeneous material	Field Number
CT4A	30lb black felt	MISC				N	NP	1 3	021220-1A
CT3B	↓							2 3	1B
CT2A	↓							3 3	1C
CT3A	Red Spanish tile							1 3	021220-1A
CT4B								2 3	1B
CT2B								3 3	1C
CT2B	white caulk on dormer appon							2 2	021220-3A
CT2B	clear silicon caulk on dormer wall							2 2	021220-3B
Next to ASSA	Black Roofing mastic							1 2	021220-1A
BY CT2A 1A	Black Gout							2 2	021220-4B
								1 2	021220-5A
								2 2	5B

Type of Analysis (circle): PLM TEM Pt. Count PLM Qualitative

Comments:

Damage Factors: _____ Physical (sig dmg-dmg-no dmg) Water (extensive-moderate-slight-none) _____

Disturbance Factors: _____ Proximity (<1ft- 1-6ft- >6ft) Accessibility (within reach-barely reachable-not reachable) _____

Relinquished By/Date: _____ Relinquished By/Date: _____

Notes: _____

Deterioration (heavy-moderate-light-none) _____

Vibration (gym-music rm-auditorium-mechanical rm-elevator-other) _____

Air movement (high-moderate-low) _____

Received By/Date: _____ Received By/Date: _____

Enfriability (yes-no: hard-mod-soft surface) _____

Barriers (perm airtight-enclosed-encapsulated) _____

Texture (rough/pitted-moderate-smooth) _____



BULK SAMPLE LOG

290 Roberts Street, Suite 301
East Hartford, CT 06108
(860) 282-9924

ATC Inspector: Ricky Regis Client Name: Simpson Gumpertz Hegg
 Accreditation No.: 1030 Project No./Task No.: 158840001
 Survey Date: 2-12-20 Project Manager: Scott Johnson
 Signature: _____ Requested Completion Date: _____

Lab Name: EMSL Requested turnaround time (circle): 3 HR 6 HR 24 HR 48 HR 3 DY 5 DY No. Samples Collected: _____
 Building: Union Station Address: 1 Union Plaza, Hartford, CT

Location	Material Description	Type S TSI MISC	Estimated Quantity	Friable Y/N	Condition (SD D ND)	Sample of homogeneous material	Field Number
BUR 1A	Black EPDM Rubber w/ adhesive	MISC		N	D	1 2	2000-6A
BUR 1B	1.5" Poly iso black					1 2	6B
BUR 1A	Adhesive on Plywood					1 2	7A
FSC1-A	Black felt					1 2	7B
FSC1-B	black mastic					1 2	8A
FSC1 foot exhaust	Clear Silicon Caulk					1 2	8B
FSC1 foot exhaust	Old brown skirt blushing caulk					1 2	9A
FSC1 foot exhaust	black skirt flashing caulk					1 2	9B
						1 2	10A
						1 2	10B
						1 2	11A
						1 2	11B
						1 2	12A
						1 2	12B
						1 2	13A
						1 2	13B

Type of Analysis (circle): PLM TEM Pt. Count PLM Qualitative

Comments: _____

Damage Factors: _____
 Disturbance Factors: _____

Relinquished By/Date: _____
 Relinquished By/Date: _____

Notes: _____
 Deterioration (heavy-moderate-light-none) _____
 Vibration (gym-music rm-auditorium-mechanical rm-elevator-other) _____
 Air movement (high-moderate-low) _____

Received By/Date: _____
 Received By/Date: _____





BULK SAMPLE LOG

290 Roberts Street, Suite 301
East Hartford, CT 06108
(860) 282-9924

242001058

ATC Inspector: Ricky Regins Client Name: Simpson Gump & B2 175yd

Accreditation No.: 1030 Project No./Task No.: 158840001

Survey Date: 2-12-20 Project Manager: Scott Janso

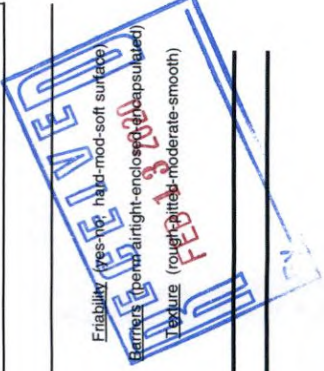
Signature: _____ Requested Completion Date: _____

Lab Name: EMSL Requested turnaround time (circle): 3 HR 6 HR 24 HR 48 HR 3 DY 5 DY No. Samples Collected: _____

Building: Union Station Address: Union place, Hartford, CT

Location	Material Description	Type S	TSI	MISC	Estimated Quantity	Friable Y/N	Condition (SD D ND)	Sample_of_ (homogeneous material)	Field Number
<u>BY FSC1-A</u>	<u>Black Brown EPDM Seals</u>	<u>MISC</u>				<u>N</u>	<u>D</u>	<u>1 2 2</u>	<u>19A</u>
<u>BY FSC1-C</u>	<u>Black Caulk</u>							<u>1 2 2</u>	<u>19B</u>
<u>FSC1-B</u>	<u>Green Sealant</u>							<u>1 2 2</u>	<u>15A</u>
<u>FSC1-A</u>	<u>Black EPDM Strip</u>							<u>1 2 2</u>	<u>15B</u>
<u>FSC1-C</u>	<u>Paper under belt</u>							<u>1 2 2</u>	<u>16A</u>
<u>AS 2</u>	<u>Black mastic on Stone</u>							<u>1 2 2</u>	<u>16B</u>
<u>AS3 blind penetr</u>	<u>Black/white SKIFF</u>							<u>1 2 2</u>	<u>17A</u>
<u>AS 2</u>	<u>Flashing Mastic</u>							<u>1 2 2</u>	<u>17B</u>
<u>AS 2</u>	<u>Red Shingle</u>							<u>1 2 2</u>	<u>18A</u>
<u>AS 1</u>								<u>1 3</u>	<u>18B</u>
								<u>2 3</u>	<u>19A</u>
								<u>2 3</u>	<u>19B</u>
								<u>2 3</u>	<u>20A</u>
								<u>2 3</u>	<u>20B</u>
								<u>2 3</u>	<u>20C</u>

Type of Analysis (circle): PLM TEM Pt. Count PLM Qualitative



Comments:

Damage Factors: _____

Disturbance Factors: _____

Relinquished By/Date: _____

Relinquished By/Date: _____

Notes:

- Physical (sig dmg-dmg-no dmg)
- Water (extensive-moderate-slight-none)
- Proximity (<1ft-1-6ft->6ft)
- Accessibility (within reach-barely-reachable-not-reachable)
- Ventilation (yes-no; if yes, type)
- Air conduits (air plenum - air shaft - elevator shaft - duct)
- Deterioration (heavy-moderate-light-none)
- Vibration (gym-music m-auditorium-mechanical m-elevator-other)
- Air movement (high-moderate-low)
- Reliability (yes-no; hard-mod-soft surface)
- Texture (rough-sanded-moderate-smooth)

Received By/Date: _____

Received By/Date: _____



BULK SAMPLE LOG

Page 4 of 4

290 Roberts Street, Suite 301
East Hartford, CT 06108
(860) 282-9924

242001058

ATC Inspector: Ricky Regis Client Name: Simpson Gumpert trng

Accreditation No.: 1030 Project No./Task No.: 1588420001

Survey Date: 2-12-20 Project Manager: SCDH Johnson

Signature: _____ Requested Completion Date: _____

Lab Name: EMSL Requested turnaround time (circle): 3 HR 6 HR 24 HR 48 HR 3 DY 5 DY No. Samples Collected _____

Building: Union Station Address: Union Place, Hartford, CT

Location	Material Description	Type S MISC	Estimated Quantity	Friable Y/N	Condition (SD D ND)	Sample of homogeneous material	Field Number
ASS-A	Red 3 Tab Shush	MISC		N	P	13	22A
ASS-B	Red 3 Tab Shush	MISC		N	P	23	22B
ASS-B	Red 3 Tab Shush	MISC		N	P	33	22C
ASS-B	15 lb felt	MISC		N	P	13	23A
ASS-A	15 lb felt	MISC		N	P	23	23B
ASS-B	black felt	MISC		N	P	33	23C
ASS-1	black felt	MISC		N	P		24A
ASS-2	black felt	MISC		N	P		24B
EPMB-B	black mastic	MISC		N	P		24C

Type of Analysis (circle): PLM TEM Pt. Count PLM Qualitative

Comments: **RECEIVED**
FEB 13 2020

Damage Factors: Physical (sig dmg-dmg-no dmg) Water (extensive-moderate-slight-none) Accessibility (within reach-barely reachable-not reachable) Air conduits (air plenum - air shaft - elevator shaft - duct)

Disturbance Factors: Proximity (<1ft - 1-6ft - >6ft) Ventilation (yes-no; if yes, type)

Notes: Deterioration (heavy-moderate-light-none) Vibration (gym-music rm-auditorium-mechanical rm-elevator-other) Air movement (high-moderate-low) Friability (yes-no--hand-mod-eoff-surface) Bafters (perm airtight-enclosed-encapsulated) Texture (rough-pitted-moderate-smooth)

Relinquished By/Date: _____ Received By/Date: _____



242001058

BULK SAMPLE LOG

Page 5 of

290 Roberts Street, Suite 301
East Hartford, CT 06108
(860) 282-9924

ATC Inspector: <u>Ricky Reagin</u>		Client Name: <u>Simpson Gumpertz H&R</u>					
Accreditation No.: <u>1036</u>		Project No./Task No.: <u>1588920001</u>					
Survey Date: <u>2-12-20</u>		Project Manager: <u>Scott Johnson</u>					
Signature: <u>[Signature]</u>							
Lab Name: <u>EMSL</u>		Requested Completion Date: <u> </u>					
Building: <u>Union Station</u>		Requested turnaround time (circle): <u>3 HR</u> 6 HR 24 HR 48 HR <u>3 DY</u> 5 DY					
Address: <u>1 Union Place, Hartford, CT</u>		No. Samples Collected: <u> </u>					
Location	Material Description	Type S TSI MISC	Estimated Quantity	Friable Y/N	Condition (SD D ND)	Sample of homogeneous material	Field Number
<u>EPDM-A</u>	<u>Paper on foam</u>	<u>MISC</u>		<u>N</u>	<u>D</u>	<u>13</u>	<u>021220-25A</u>
<u>-C</u>						<u>03</u>	<u>25B</u>
<u>-D</u>						<u>33</u>	<u>25C</u>
<u>-A</u>	<u>black asphalt</u>					<u>13</u>	<u>26A</u>
<u>-B</u>						<u>23</u>	<u>26B</u>
<u>-D</u>						<u>33</u>	<u>26C</u>
<u>-A</u>	<u>Cement</u>					<u>13</u>	<u>27A</u>
<u>-C</u>						<u>23</u>	<u>27B</u>
<u>-D</u>						<u>33</u>	<u>27C</u>
<u>-A</u>	<u>EPDM</u>					<u>13</u>	<u>28A</u>
<u>-C</u>						<u>23</u>	<u>28B</u>
<u>-D</u>						<u>33</u>	<u>28C</u>

RECEIVED
FEB 13 2020

Type of Analysis (circle): PLM TEM Pt. Count PLM Qualitative

Comments:

Damage Factors: Physical (sig dmg-dmg-no dmg) Water (extensive-moderate-slight-none) Deterioration (heavy-moderate-light-none)

Disturbance Factors: Proximity (<1ft-1-6ft->6ft) Accessibility (within reach-barely-reachable-not-reachable) Vibration (gym-music rm-auditorium-mechanical rm-elevator-other)

Ventilation (yes-no; if yes, type) Air conduits (air plenum - air shaft - elevator shaft - duct) Air movement (high-moderate-low)

Relinquished By/Date: Received By/Date:

Relinquished By/Date: Received By/Date:

Enfriability (yes-no; hard-mod-soft surface)
Sealants (perm-imp-anti-mold-encapsulated)
Texture (rough-pitted-moderate-smooth)



BULK SAMPLE LOG

Page 6 of 6

290 Roberts Street, Suite 301
East Hartford, CT 06108
(860) 282-9924

ATC Inspector: Ricky Resis Client Name: Simpson Gunpowder
 Accreditation No.: 1030 Project No./Task No.: 158842000
 Survey Date: 2-18-20 Project Manager: Scott Janson
 Signature: _____ Requested Completion Date: _____

Lab Name: EnvSL Requested turnaround time (circle): 3 HR 6 HR 24 HR 48 HR 3 DY 5 DY No. Samples Collected: _____
 Building: Union Station Address: Union Place, Hartford, CT

Location	Material Description	Type S TSI MISC	Estimated Quantity	Friable Y/N	Condition (SD D ND)	Sample_of_ (homogeneous material)	Field Number
TR1-A	black paper on floor	MISC		N	D	14	29A
-B	w/mastic					24	29B
-C						34	29C
-D						44	29D
-A	concrete paper					14	30A
-B						24	30B
-C						34	30C
-D						44	30D
-A	brown cork board w/ black mastic					1	31A
-B						2	31B
-C						3	31C
-D						4	31D
-A	adhesive layer					1	32A
-B						2	32B
-C						3	32C
-D						4	32D

Type of Analysis (circle): PLM TEM Pt. Count PLM Qualitative

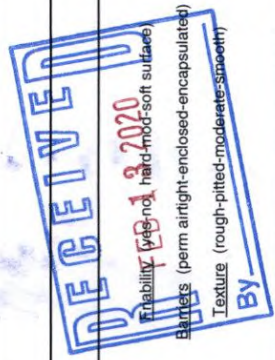
Comments: _____

Damage Factors: _____
 Disturbance Factors: _____

Notes: _____
 Deterioration (heavy-moderate-light-none)
 Vibration (gym-music m-auditorium-mechanical m-elevator-other)
 Air movement (high-moderate-low)

Relinquished By/Date: _____
 Relinquished By/Date: _____

Received By/Date: _____
 Received By/Date: _____



BULK SAMPLE LOG

290 Roberts Street, Suite 301
East Hartford, CT 06108
(860) 282-9924

242001058

ATC Inspector: Ricky Regius Client Name: Simpson Guest RZ Wright
 Accreditation No.: 10352 Project No./Task No.: 158842000
 Survey Date: 2-12-20 Project Manager: Scott Johnson
 Signature: _____ Requested Completion Date: _____

Lab Name: EMSL Requested turnaround time (circle) 3 HR 6 HR 24 HR 48 HR 3 DY 5 DY No. Samples Collected _____
 Building: Union Station Address: 1 Union place, Hartford, CT

Location	Material Description	Type S TSI MISC	Estimated Quantity	Friable Y/N	Condition (SD D ND)	Sample_of_ (homogeneous material)	Field Number
TR 1 A	black sealant on structural	MISC		N	D	1 2	021020-33A
TR 1 B	column					2	33B

Type of Analysis (circle): PLM TEM Pt. Count PLM Qualitative

Comments: _____

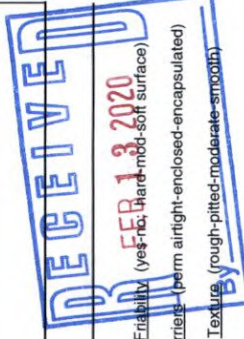
Damage Factors: Physical (sig dmg-dmg-no dmg) Water (extensive-moderate-slight-none) Deterioration (heavy-moderate-light-none) Friability (yes-no-hard-mbd-soft surface)

Disturbance Factors: Proximity (<1ft-1-6ft->6ft) Accessibility (within reach-barely reachable-not reachable) Vibration (gym-music m-auditorium-mechanical m-elevator-other) Barricade (perm airtight-enclosed-encapsulated)

Ventilation (yes-no; if yes, type) Air conduits (air plenum - air shaft - elevator shaft - duct) Air movement (high-moderate-low) Texture (rough-pitted-moderate-smooth)

Relinquished By/Date: _____ Received By/Date: _____

Relinquished By/Date: _____ Received By/Date: _____





EMSL Analytical, Inc.

29 North Plains Highway, Unit # 4 Wallingford, CT 06492

Tel/Fax: (203) 284-5948 / (203) 284-5978

<http://www.EMSL.com> / wallingfordlab@emsl.com

EMSL Order: 242001164

Customer ID: ATCE54

Customer PO: 19-10133-0001

Project ID:

Attention: Scott Johnson
ATC Group Services LLC
290 Roberts Street
Suite 301
East Hartford, CT 06108

Phone: (860) 282-9924

Fax: (860) 282-9826

Received Date: 02/19/2020 11:10 AM

Analysis Date: 02/20/2020

Collected Date: 02/19/2020

Project: 1588420001/ UNION STATION, 1 UNION PLACE, HARTFORD, CT

Test Report: Asbestos Analysis of Bulk Materials via EPA 600/R-93/116 Method using Polarized Light Microscopy

Sample	Description	Appearance	Non-Asbestos		Asbestos
			% Fibrous	% Non-Fibrous	% Type
21920-1A <small>242001164-0001</small>	CT 2 D - 30LB BLACK FELT	Black Fibrous Homogeneous	70% Cellulose	2% Quartz 28% Non-fibrous (Other)	None Detected
21920-1B <small>242001164-0002</small>	CT 4 B - 30LB BLACK FELT	Black Fibrous Homogeneous	70% Cellulose	2% Quartz 28% Non-fibrous (Other)	None Detected
21920-1C <small>242001164-0003</small>	CP 2 B - 30LB BLACK FELT	Black Fibrous Homogeneous	70% Cellulose	2% Quartz 28% Non-fibrous (Other)	None Detected
21920-1D <small>242001164-0004</small>	CT 2 C - 30LB BLACK FELT	Black Fibrous Homogeneous	60% Cellulose	5% Quartz 35% Non-fibrous (Other)	None Detected
21920-1E <small>242001164-0005</small>	CT 3 A - 30LB BLACK FELT	Black Fibrous Homogeneous	60% Cellulose	5% Quartz 35% Non-fibrous (Other)	None Detected

Analyst(s)

Kelsey Duffy (3)

Tara Svendsen (2)

Danny Sandhu, Asbestos Laboratory Manager
or Other Approved Signatory

EMSL maintains liability limited to cost of analysis. The above analyses were performed in general compliance with Appendix E to Subpart E of 40 CFR (previously EPA 600/M4-82-020 "Interim Method"), but augmented with procedures outlined in the 1993 ("final") version of the method. This report relates only to the samples reported above, and may not be reproduced, except in full, without written approval by EMSL. EMSL bears no responsibility for sample collection activities or analytical method limitations. Interpretation and use of test results are the responsibility of the client. All samples received in acceptable condition unless otherwise noted. This report must not be used by the client to claim product certification, approval, or endorsement by NVLAP, NIST or any agency of the federal government. EMSL recommends gravimetric reduction for all non-friable organically bound materials prior to analysis. Estimation of uncertainty is available on request.

Samples analyzed by EMSL Analytical, Inc. Wallingford, CT NVLAP Lab Code 200700-0,

Initial report from: 02/20/2020 15:05:56



BULK SAMPLE LOG

290 Roberts Street, Suite 301
East Hartford, CT 06108
(860) 282-9924

242001164

ATC Inspector: Ricky Regis Client Name: Simpson
 Accreditation No.: 1030 Project No./Task No.: 1588420001
 Survey Date: 2-19-20 Project Manager: Scott Johnson
 Signature: _____ Requested Completion Date: _____

Lab Name: EMSL Requested turnaround time (circle): 3 HR 6 HR 24 HR 48 HR 3 DY 5 DY No. Samples Collected 5
 Building: Union Station Address: 1 Union place hartford, CT

Location	Material Description	Type S MISC	Estimated Quantity	Friable Y/N	Condition (SD D ND)	Sample_of_ (homogeneous material)	Field Number
CT2 D	30lb black felt	MISC		N	ND	1 S	2100-1A
CT4 B						2 S	2100-1B
CT2 B						3 S	1C
CT2 C						4 S	1D
CT3 A						5 S	1E

Type of Analysis (circle): PLM TEM Pt. Count PLM Qualitative

Comments: _____

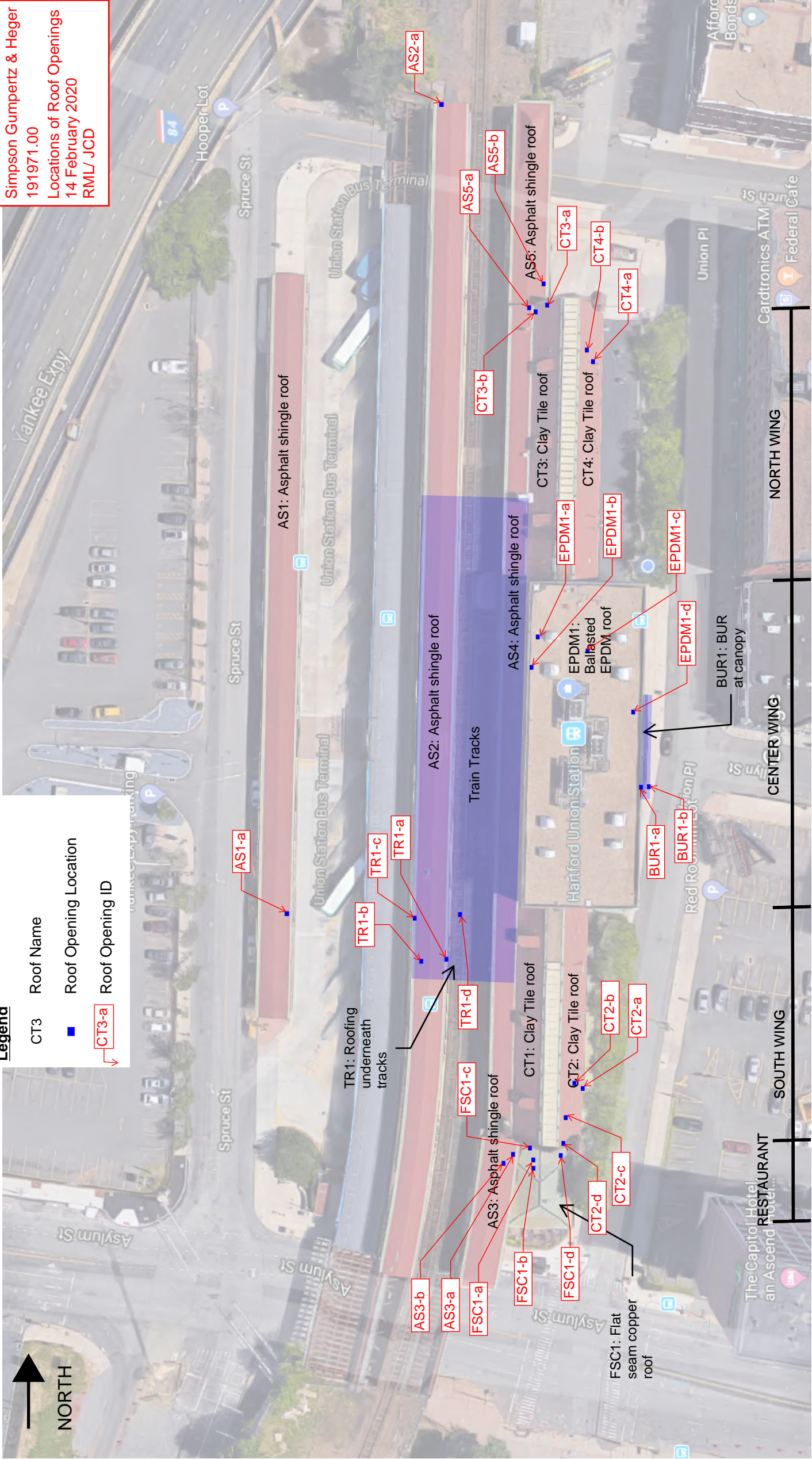
Damage Factors: _____ Physical (sig dmg-dmg/no dmg) Water (extensive-moderate-slight-none) Friability (yes-no; hard-mod-soft surface)
 Disturbance Factors: _____ Proximity (<1ft-1.6ft- >6ft) Accessibility (within reach-barely reachable-not reachable) Barriers (perm airtight-encapsulated)
 Ventilation (yes-no; if yes, type) Air conduits (air plenum - air shaft - elevator-shaft - duct) Air movement (high-moderate-low) Texture (rough-pipe/moderate/smooth)

Relinquished By/Date: _____ Received By/Date: _____
 Relinquished By/Date: _____ Received By/Date: _____

Legend

- CT3 Roof Name
- Roof Opening Location
- CT3-a Roof Opening ID

Simpson Gumpertz & Heger
 191971.00
 Locations of Roof Openings
 14 February 2020
 RML/ JCD





RICHARD T REGIUS JR
31 BURR AVE UNIT 1
MIDDLETOWN CT 06457-3734



Dear RICHARD T REGIUS JR,

Attached you will find your validated certificate for the coming year. Should you have any questions about your certificate renewal, please do not hesitate to write or call:

Department of Public Health
P.O. Box 340308
M.S.#12MQA
Hartford, CT 06134-0308

(860) 509-7603
oplcdph@ct.gov
www.ct.gov/dph/license

Sincerely,

RENÉE D. COLEMAN-MITCHELL, MPH, COMMISSIONER
DEPARTMENT OF PUBLIC HEALTH

EMPLOYER'S COPY
STATE OF CONNECTICUT
DEPARTMENT OF PUBLIC HEALTH

NAME
RICHARD T REGIUS JR

VALIDATION NO. 03-750080 CERTIFICATE NO. 001030 CURRENT THROUGH 02/29/20

PROFESSION
ASBESTOS CONSULTANT-INSPECTOR

SIGNATURE _____ COMMISSIONER _____

STATE OF CONNECTICUT
DEPARTMENT OF PUBLIC HEALTH

PURSUANT TO THE PROVISIONS OF THE GENERAL STATUTES OF CONNECTICUT
THE INDIVIDUAL NAMED BELOW IS CERTIFIED
BY THIS DEPARTMENT AS A
ASBESTOS CONSULTANT-INSPECTOR

RICHARD T REGIUS JR

CERTIFICATE NO. 001030
CURRENT THROUGH 02/29/20
VALIDATION NO. 03-750080

SIGNATURE _____ COMMISSIONER _____

INSTRUCTIONS:

1. Detach and sign each of the cards on this form
2. Display the large card in a prominent place in your office or place of business.
3. The wallet card is for you to carry on your person. If you do not wish to carry the wallet card, place it in a secure place.
4. The employer's copy is for persons who must demonstrate current licensure/certification in order to retain employment or privileges. The employer's card is to be presented to the employer and kept by them as a part of your personnel file. Only one copy of this card can be supplied to you.

WALLET CARD
STATE OF CONNECTICUT
DEPARTMENT OF PUBLIC HEALTH

NAME
RICHARD T REGIUS JR

VALIDATION NO. 03-750080 CERTIFICATE NO. 001030 CURRENT THROUGH 02/29/20

PROFESSION
ASBESTOS CONSULTANT-INSPECTOR

SIGNATURE _____ COMMISSIONER _____

1002433-0002441-0000001 of 0000001-C01-a1d00101-0964-02437

CERTIFICATE OF ACHIEVEMENT

This certifies that

Richard T. Regius, Jr.

has successfully completed the

**4 Hour Asbestos Site Inspector Refresher Training
Asbestos Accreditation Under TSCA Title II
40 CFR Part 763**

conducted by

ATC Group Services LLC
73 William Franks Drive
West Springfield, MA 01089
(413) 781-0070




Principal Instructor: Maureen Grissom

November 14, 2019

Date of Course

November 14, 2020

Expiration Date



Regional Training Manager: Gregory Morsch

SIAR-6433

Certificate Number

November 14, 2019

Examination Date