

Buyer

Telephone Number

E-mail Address

Fax Number

UNIVERSITY OF CONNECTICUT HEALTH CENTER
Procurement Operations & Contracts
263 Farmington Avenue, MC4036
Farmington, CT 06032-4036

ITB NUMBER:	BID DUE DATE:	BID DUE TIME:	ITB SURETY:
		EST	
ITB TITLE:			

ADDENDUM NUMBER: _____

DATE ADDENDUM ISSUED: _____

FOR: The University of Connecticut Health Center

NOTE:

This Addendum must be Signed & Returned with your bid.

Authorized Signature of Bidder

Company Name

Approved By: _____

[_____]

Buyer

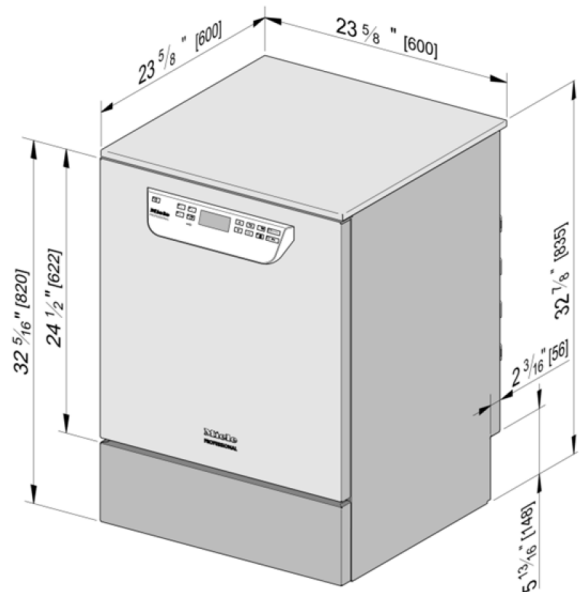
(Original Signature on Document in Procurement Files)

UCHC4-130393893 Project 19-063 Convert to Zebra Fish Facility

	<u>Supplier Question</u>	<u>UConn Health Response</u>
1	<p>Question on the Epoxy floor finish specification. 1.3 SYSTEM DESCRIPTION A. The work shall consist of preparation of the substrate, the furnishing and application of a rapid drying, calcium aluminate based cementitious urethane based self-leveling seamless flooring system with decorative quartz aggregate broadcast and Epoxy broadcast and urethane topcoat. These two systems are separate and not compatible with one another. It is an either or, not both....please clarify.</p>	<p>Please use this as the first paragraph of Section 1.3. System Description for Hybri-Flex EQ system specified.</p> <p>A. The work shall consist of preparation of the substrate, the furnishing and application of a cementitious urethane based self-leveling seamless flooring system with decorative quartz aggregate broadcast and Epoxy broadcast and topcoats.</p>
2	<p>Plumbing: What size is the existing RO water line above the ceiling? Material? copper?</p>	<p>Based on the available plans it is understood that the pipe diameter serving this area is 1/2" diameter (see attached plumbing plan). Accordance with the systems maintenance vendor the material is polypropylene</p>
3	<p>Plumbing: I looked up the model number for the dishwasher, couldn't find it. Size of water supply to dishwasher? Outlet/drain size?</p>	<p>Dishwasher Model Number should read: PG8504 not PG8405. Refer to attached Data Sheet.</p>
4	<p>Regular work schedule?</p>	<p>Refer to Specification Section 01015 (F)</p>

Laboratory Glassware Washer

PG 8504



SPECIFICATIONS

Unit Dimensions

Overall Unit Dimensions (With Lid) 32⁷/₈" - 35¹/₄" (835 - 895 mm) H x 23⁵/₈" (600 mm) W x 23⁵/₈" (600 mm) D

Overall Unit Dimensions (Without Lid) 32⁵/₁₆" - 34⁵/₈" (820 - 880 mm) H x 23⁹/₁₆" (598 mm) W x 23⁹/₁₆" (598 mm) D

Built-in Cabinetry

Minimum Cabinet Opening 32⁵/₁₆" (820 mm) H x 23⁹/₁₆" (598 mm) W x 23⁵/₈" (600 mm) D

Plumbing

Water Connection Line (1)

May be connected to a cold or hot water supply up to a maximum of 150°F/65°C. The water pressure must be between 5.8 psi (40 kPa) [Hot Water]; 14.5 psi (100 kPa) [Cold Water] and 145 psi (1,000 kPa). Recommended water pressure ≥ 29 psi (200 kPa). 5' 7" (1.7 m) flexible water intake hose with a 3/4" GHT connection is supplied.

Demineralized Water Connection Line (1)

Connect to a pressurized demineralized water supply up to a maximum of 150°F/65°C. The water pressure must be between 4.4 psi (30 kPa) and 145 psi (1,000 kPa). 5' 7" (1.7 m) flexible water intake hose with a 3/4" GHT connection is supplied.

Requirements for an unpressurized demineralized water system:

An unpressurized demineralized water connection <4.4 psi (30 kPa) requires the installation of an external booster pump, which can be requested through Miele Service. Installation of pump must be carried out by Miele Service.

Drain Hose (1)

4' 6" (1.4 m) flexible drain hose is supplied. The drain hose length cannot exceed 13' 1" (4 m).

On-site hose connector 7/8" (22 mm) outer dia. x 1³/₁₆" (30 mm) L.

Detergent Dispensing

In door powder detergent and neutralizer dispenser, one external DOS module for liquid detergent dispensing can be added by Miele Service.

Electrical Connection

Electrical Requirements - Standard 3 AC 208V 60 Hz, 3 pole 20A, NEMA L15-20 - Rated Load: 6.2 kW

Electrical Requirements - Convertible 2 AC 208V 60 Hz, 2 pole 30A, NEMA L6-30 - Rated Load: 6.2 kW

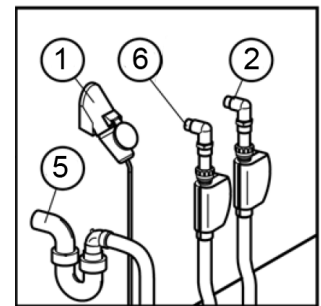
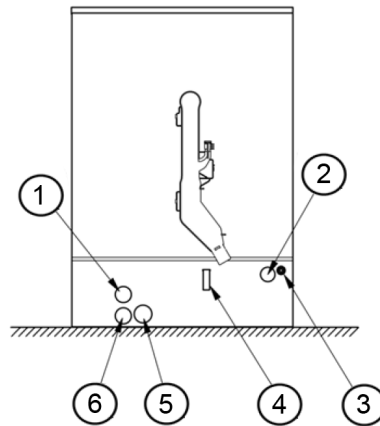
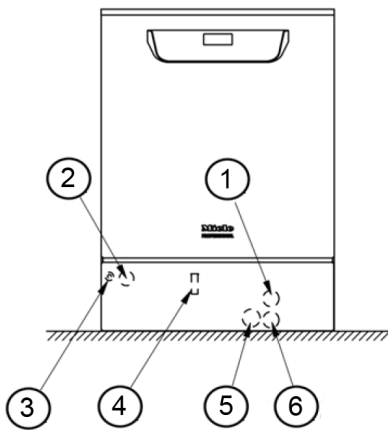
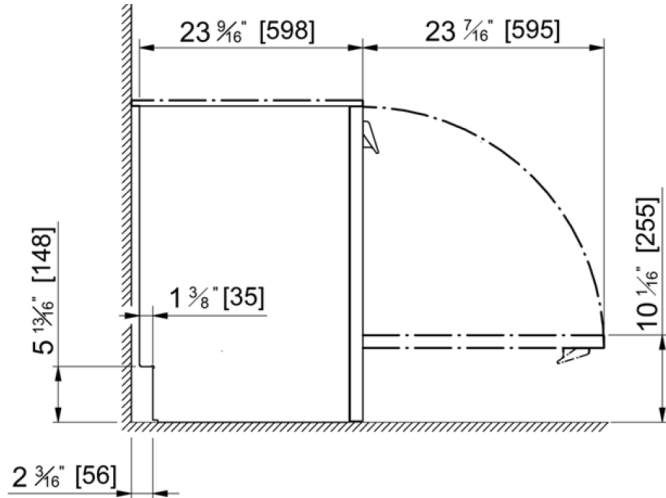
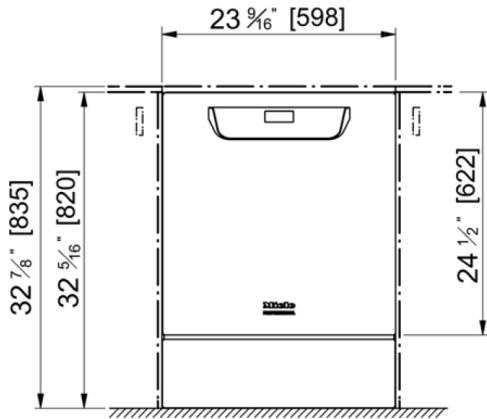
Power Cord Length 5' 9" (1.8 m)

Other

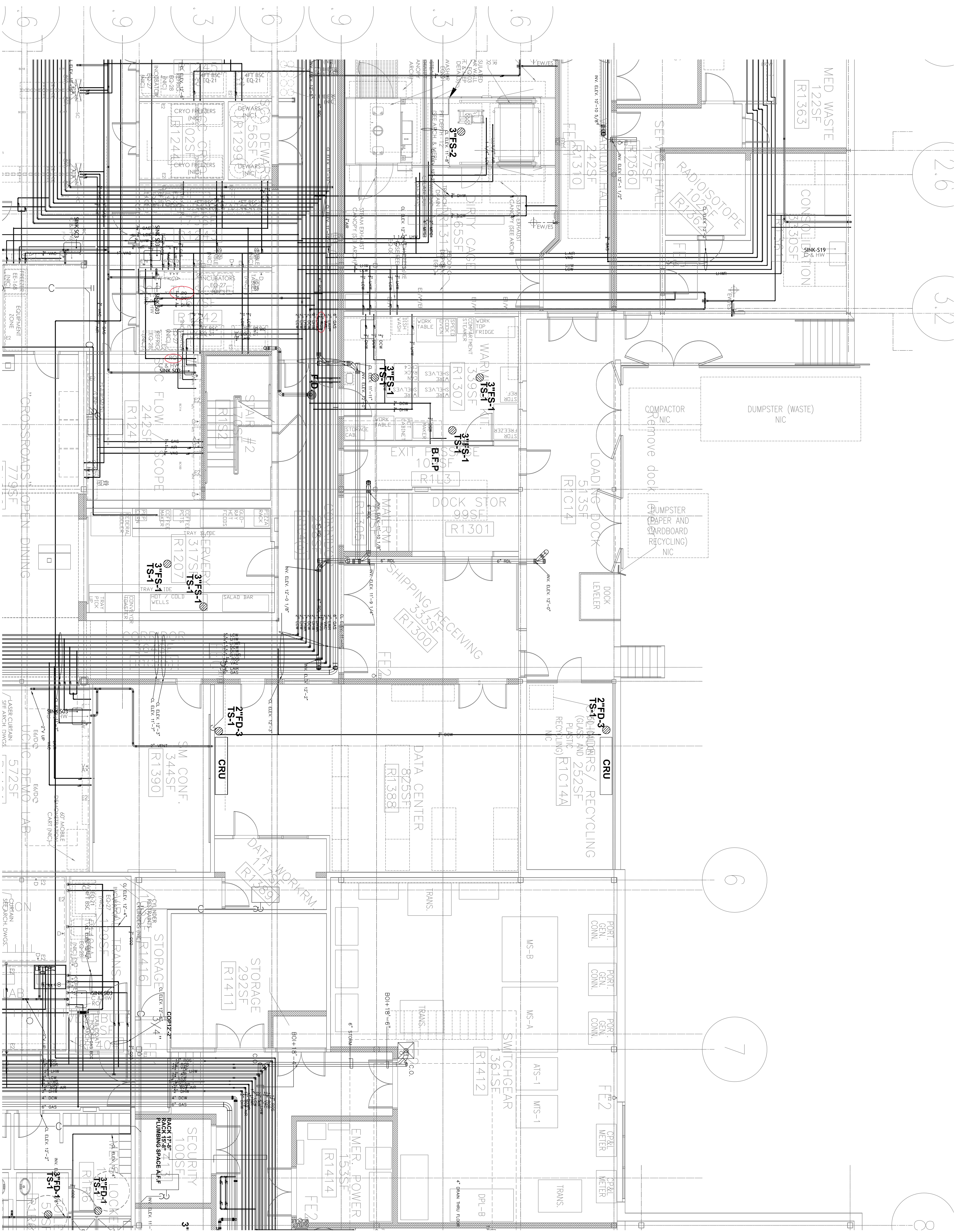
Net Weight 159 lbs (72 kg)

Shipping Dimensions 36¹/₄" (920 mm) H x 26³/₈" (670 mm) W x 29³/₈" (740 mm) D

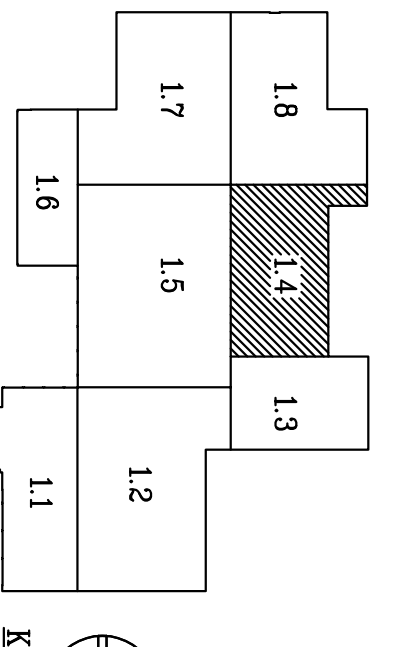
Laboratory Glassware Washer PG 8504



1	Electrical connection
2	Demineralized water connection
3	Equipotential bonding
4	External dispensing system connection
5	Drain Water
6	Cold/Hot water connection



AS BUILT DRAWING



DRAWING NO.
P-1.4

REV.	DATE	DESCRIPTION	BY

DATE: 03/26/09
SCALE: 1/4" = 1'-0"
DRAWN BY: JSC
JOB NO: MFD-09C

UCHC RESEARCH TOWER PROJECT
400 FARMINGTON AVENUE
FARMINGTON, CT

NOTES

FERRISSON

1000 ROUTE 100, SUITE 100, FARMINGTON, CT 06031
TEL: 860.633.1111 FAX: 860.633.1112
WWW.FERRISSON.COM