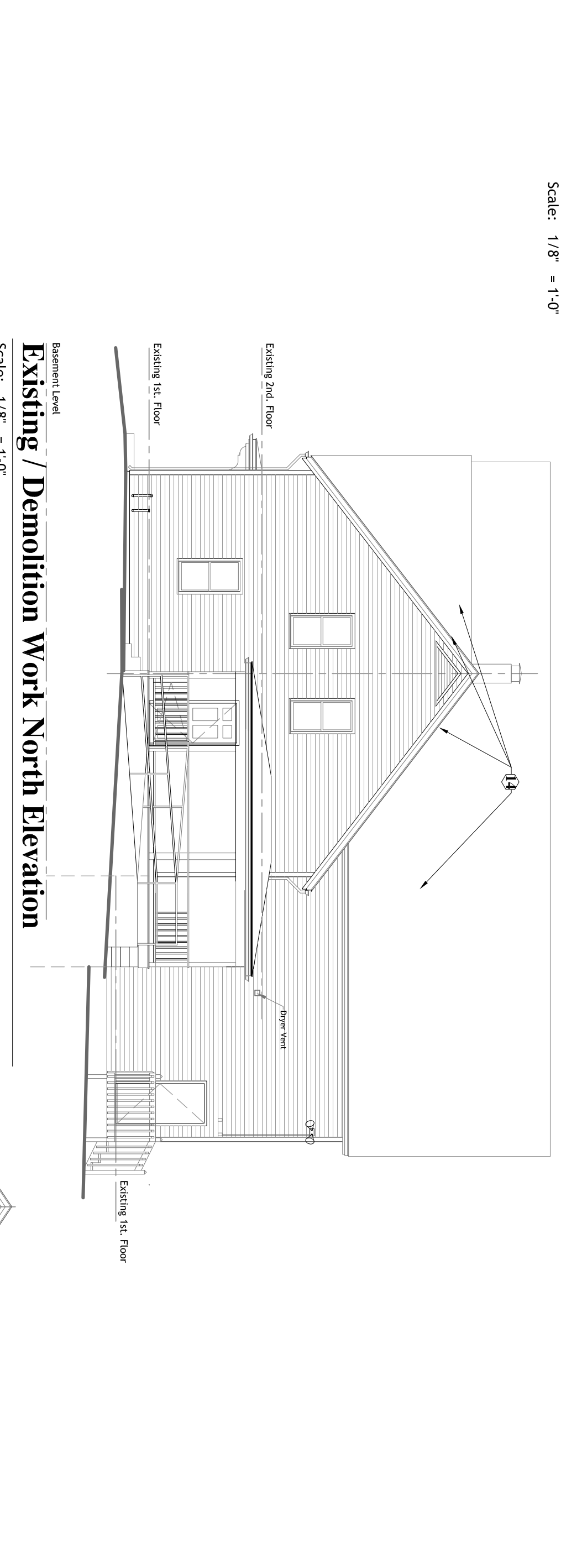
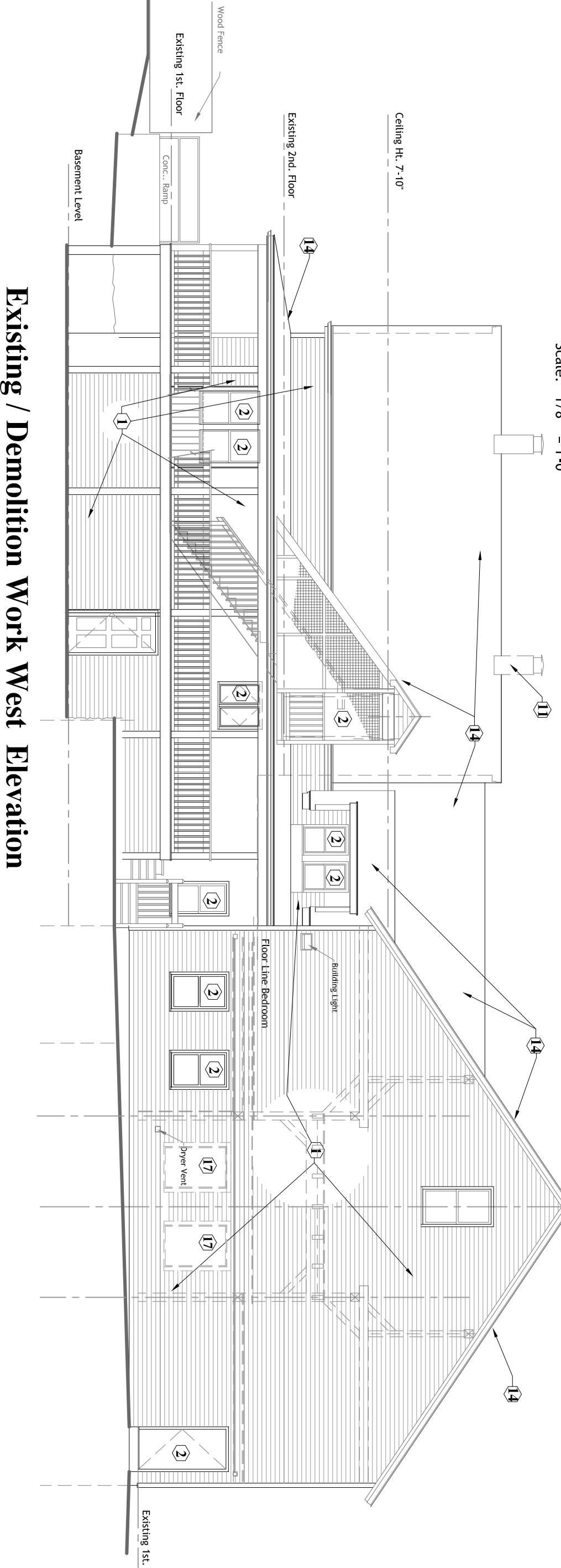


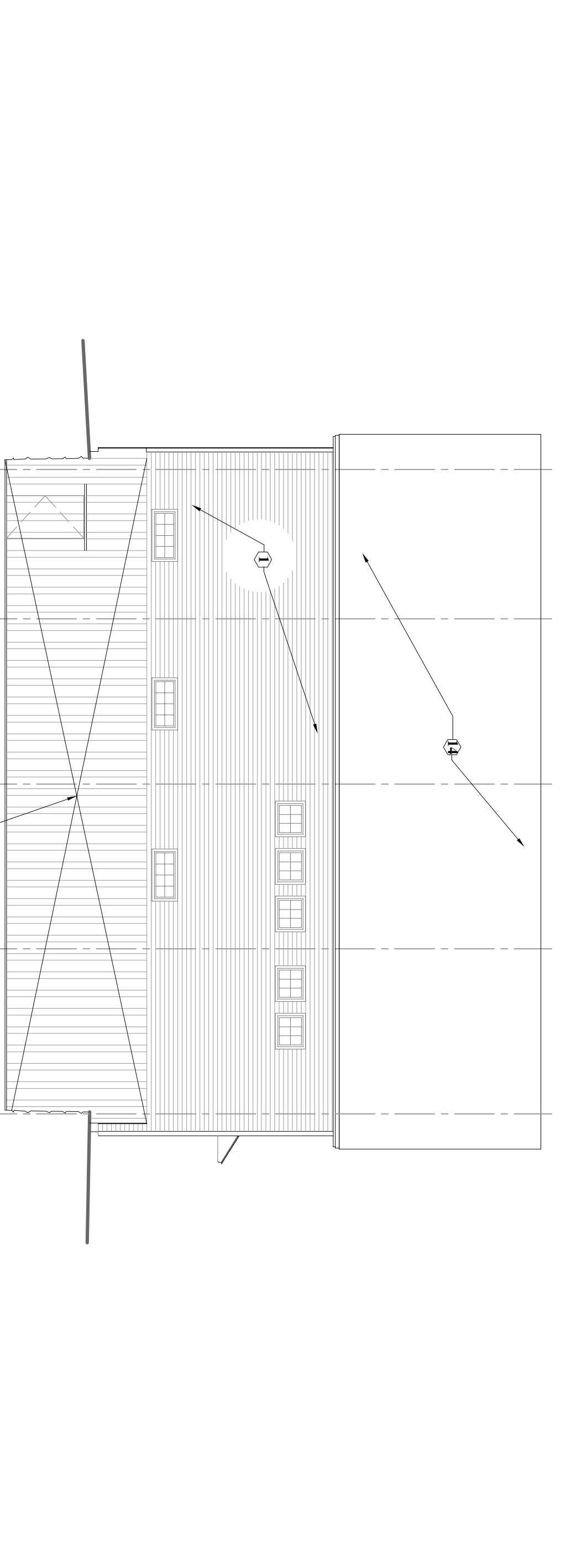
Existing / Demolition Work East Elevation
Scale: 1/8" = 1'-0"



Existing / Demolition Work North Elevation
Scale: 1/8" = 1'-0"



Existing / Demolition Work West Elevation
Scale: 1/8" = 1'-0"



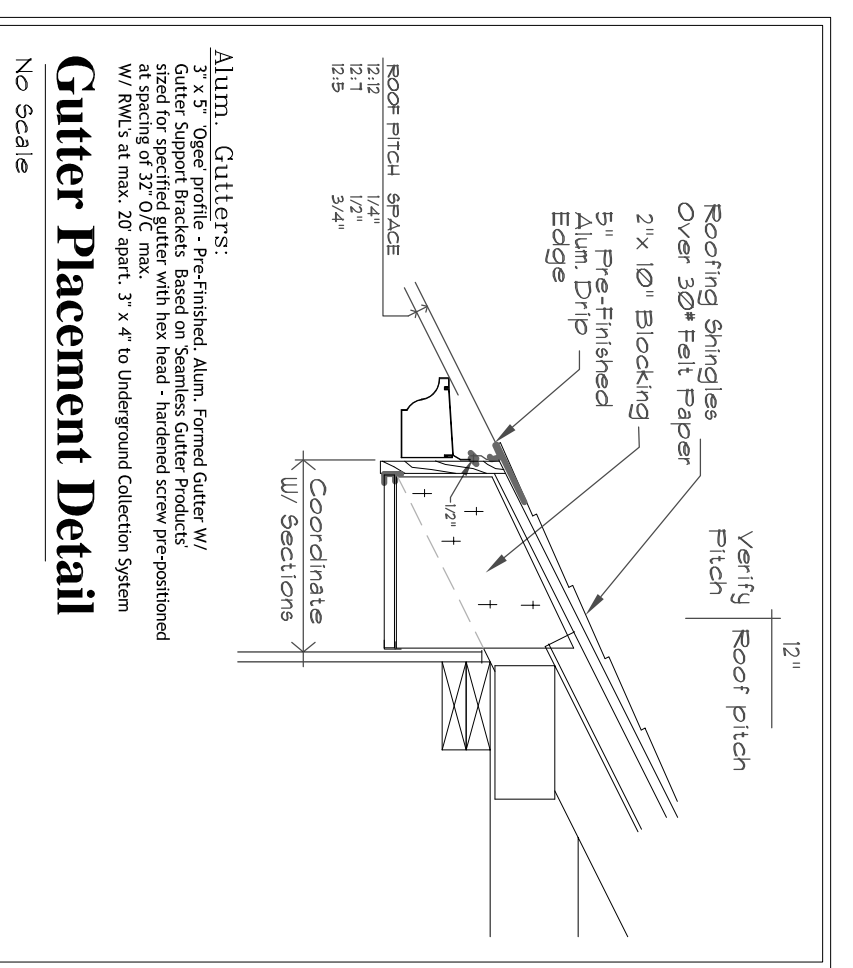
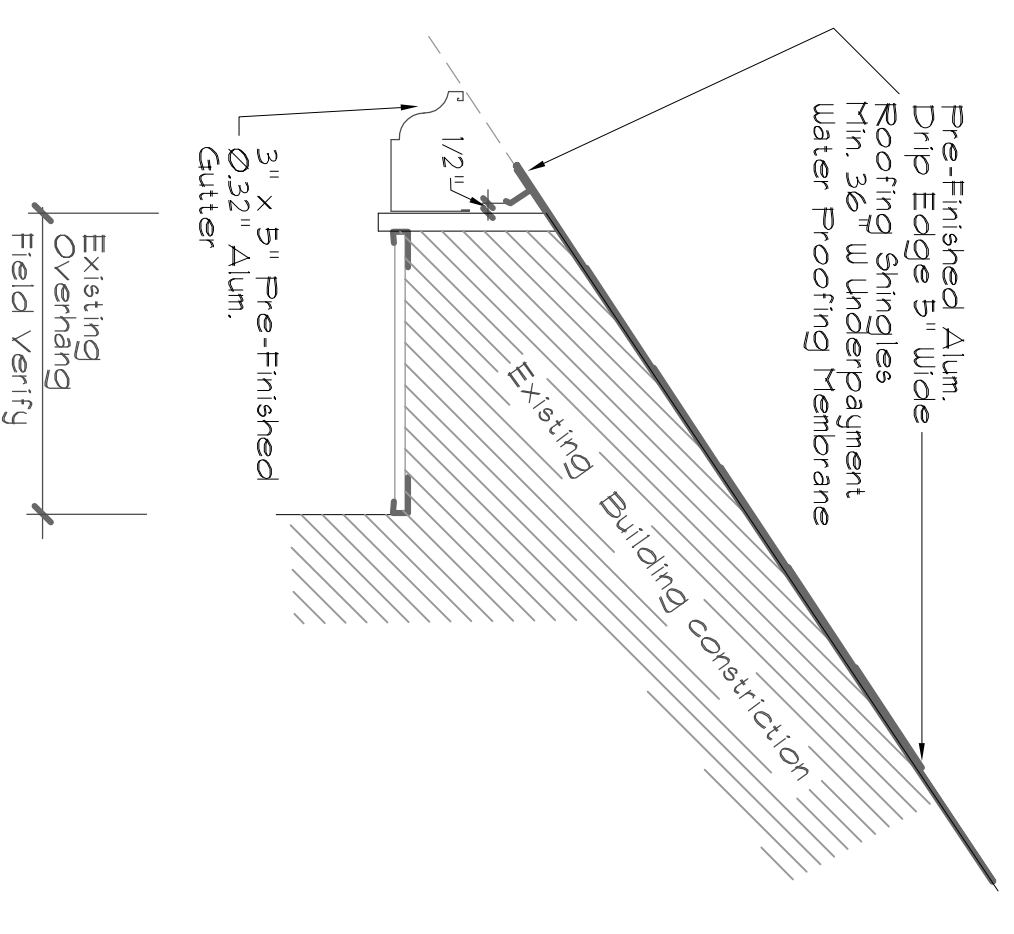
Existing / Demolition Work South Elevation
Scale: 1/8" = 1'-0"

Demolition Work Notes:

- 1 Existing Vinyl Siding. Review and coordinate with electrical trades for the disconnection and removal of existing wiring. Review existing wiring for safety. Coordinate with existing building. Remove all vinyl siding, trim, accessories down to wood sheathing substrate. Existing approved building papers, immediate insulation and components, existing food waste receptacle ready for scheduled New Work. Review and Coordinate with New Work Drawings. Existing Exterior Doors and Windows.
- 2 Review and coordinate Removal of All Existing Doors, Frames, Both Vinyl and Wood window assemblies, including all interior trim and fasteners, components. Prepare existing door and window openings for scheduled New Work. Coordinate with existing building.
- 3 Interior Schedules Demolition / Removal.
- 4 All interior finish applications, Vinyl, carpeting, tiles etc. down to original structure. Remove exterior finish applications.
- 5 Remove Existing Window, and all trim. Review and prepare rough opening for Headers, Studs, Jack studs and provide all necessary Framing.
- 6 Remove Existing New Door / Window, and provide all necessary Framing including New Door / Window, and provide all necessary Framing.
- 7 Remove Existing Door, Frame and Hardware, review and prepare rough opening for scheduled New Work and details.
- 8 All Hardware to be package, identified and delivered to Owner for storage and re-use as needed.
- 9 Remove Existing Indicated wall assembly (floor to top of ceiling structure, floor and wall to ceiling structure, exterior wall assembly) for New Work. REVEAL AND COORDINATE WITH SCHEDULED NEW WORK AND DETAILS.
- 10 Disconnect and remove existing, Kitchen sink, and related plumbing. Prepare existing wall studs for new work and support blocking. REVEAL AND COORDINATE WITH SCHEDULED NEW WORK AND DETAILS.
- 11 Disconnect and remove all existing plumbing, electrical and exhaust ductwork and fan. Remove and provide rough opening for scheduled New Work. REVEAL AND COORDINATE WITH SCHEDULED NEW WORK AND DETAILS.
- 12 Remove all existing floor, wall, and ceiling finishes, cabinets and casework. Review and prepare remaining surfaces for scheduled New Work. REVEAL AND COORDINATE WITH SCHEDULED NEW WORK AND DETAILS.
- 13 Review and remove existing brick chimney from basement level up to termination and roof line. Prepare existing opening at all levels for closure by new framing. REVEAL AND COORDINATE WITH SCHEDULED NEW WORK AND DETAILS.
- 14 Remove existing roof structure, including roof joists, rafters, decking, insulation, including door, frame and hardware. REVEAL AND COORDINATE WITH SCHEDULED NEW WORK AND DETAILS.
- 15 Remove all existing roofing shingles down to existing wood sheathing (substrate). Remove existing substrate condition. Review existing roof vents, plumbing boots, exhaust vents and caps. REVEAL AND COORDINATE WITH SCHEDULED NEW WORK AND DETAILS.
- 16 Remove all existing roof structure, including roof joists, rafters, decking, insulation, including door, frame and hardware. REVEAL AND COORDINATE WITH SCHEDULED NEW WORK AND DETAILS.
- 17 Field Review and verify existing Over Head Garage Door and Track, frame and trim. Review and coordinate Removal of all existing components. REVEAL AND COORDINATE WITH SCHEDULED NEW WORK AND DETAILS.
- 18 Remove existing wood floor structure, including floor joists, and prepare existing floor structure for scheduled New Work. REVEAL AND COORDINATE WITH SCHEDULED NEW WORK AND DETAILS.
- 19 Prepare Existing Barr doors and Hardware and additional Framing of opening. Prepare existing existing framing and wall area for scheduled new work. REVEAL AND COORDINATE WITH SCHEDULED NEW WORK AND DETAILS.
- 20 Existing 11' x 14' wall assembly. Review and coordinate Removal of all existing components, including door and frame assembly, including all existing concrete. REVEAL AND COORDINATE WITH SCHEDULED NEW WORK AND DETAILS.
- 21 Review existing 11' x 14' wall and left construction. Carefully cut assembly and as necessary, support scheduled remaining floor and left assembly to allow new wall construction. REVEAL AND COORDINATE WITH SCHEDULED NEW WORK AND DETAILS.
- 22 Review and remove existing wood sheathing (sub) up to the top of existing floor joists, end to the limit indicated for insulation for new scheduled wall construction. REVEAL AND COORDINATE WITH SCHEDULED NEW WORK AND DETAILS.

General Notes:

The original Farm Building (House & Barn) was constructed sometime in the late 1800s and has Lead Based Painted surfaces. This contractor shall be responsible for the handling, identification and removal of Lead Based Paint. This contractor shall be responsible for the handling, identification and removal of Asbestos. This contractor shall be responsible for the removal of antiquated equipment and trim to be removed and properly disposed in accordance with the Regulations of Connecticut and the Federal Government, for removal and disposal. All site conditions shall be maintained in a clean and orderly manner. All debris shall be cleaned up at the end of each days work and the site maintained in a Clean & Safe Condition, from exposure and injury. Contractors vehicles will be controlled on site and dumpster. Locations coordinate with Owner.



Alum. Gutters: 5/8" x 3/8" Alum. Gutter, 3/4" x 1/2" Alum. Gutter, 1/2" x 1/2" Alum. Gutter. All Gutters Support Frontsets. Review and coordinate with Owner. All Gutters are supported by 2" x 10" Blocking. Review and coordinate with Owner. All Gutters are supported by 2" x 10" Blocking. Review and coordinate with Owner. All Gutters are supported by 2" x 10" Blocking. Review and coordinate with Owner.

NO SCALE