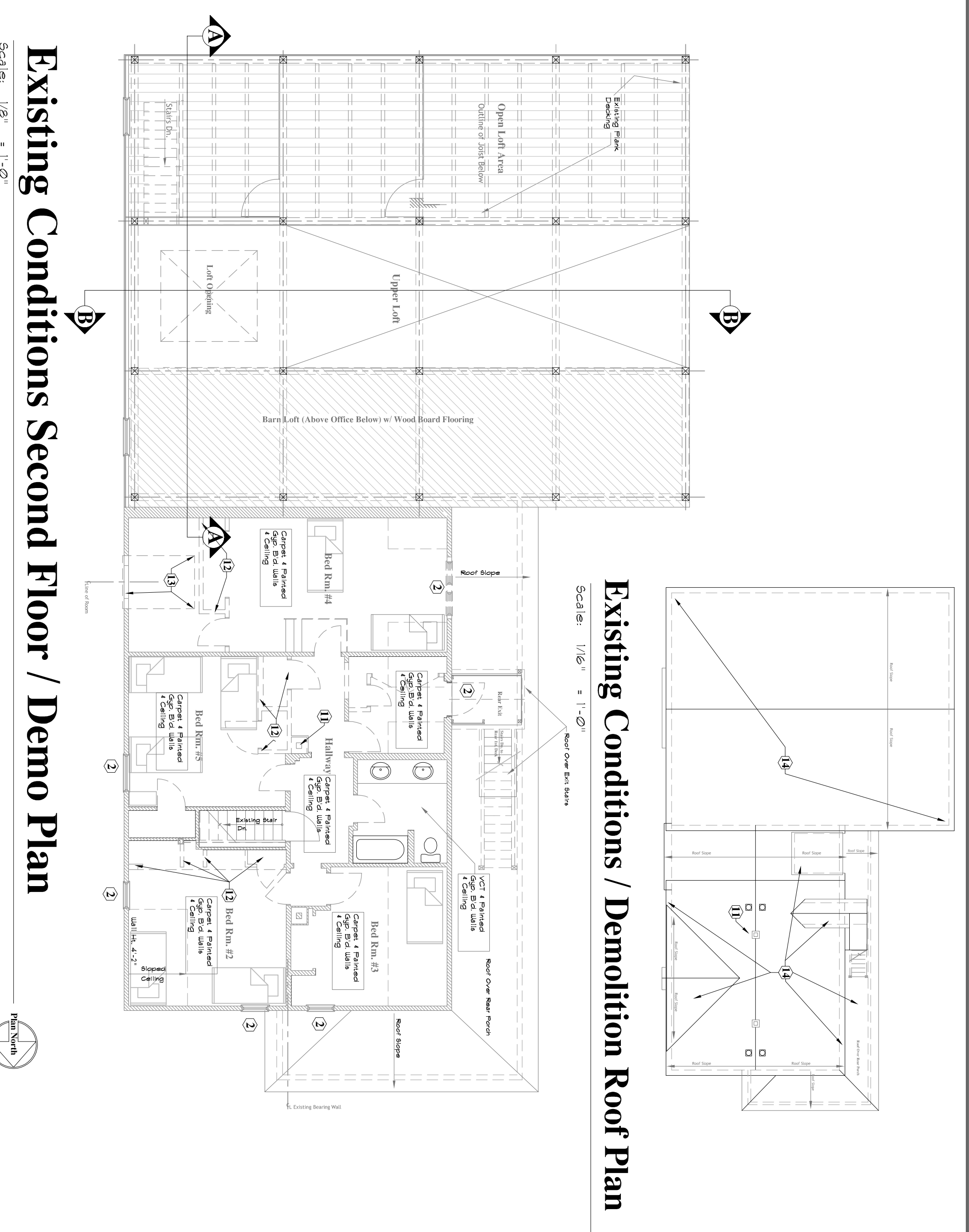
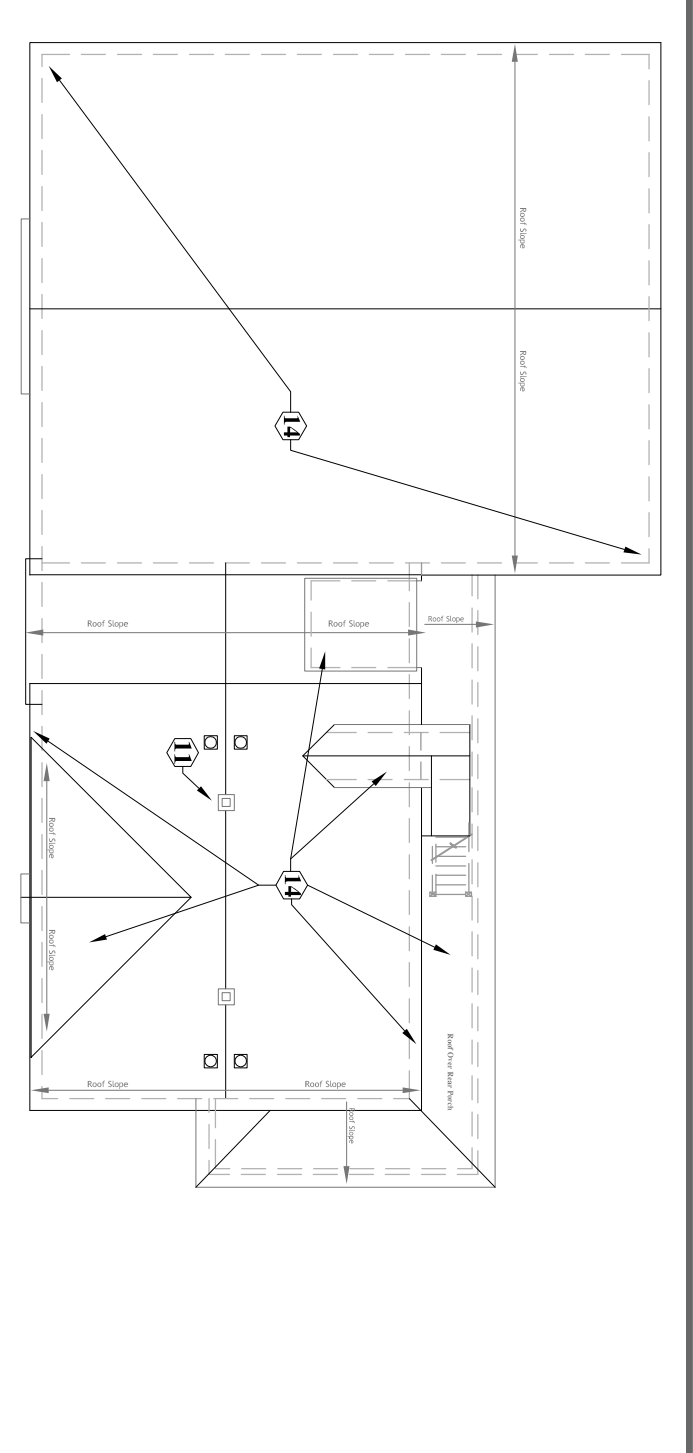


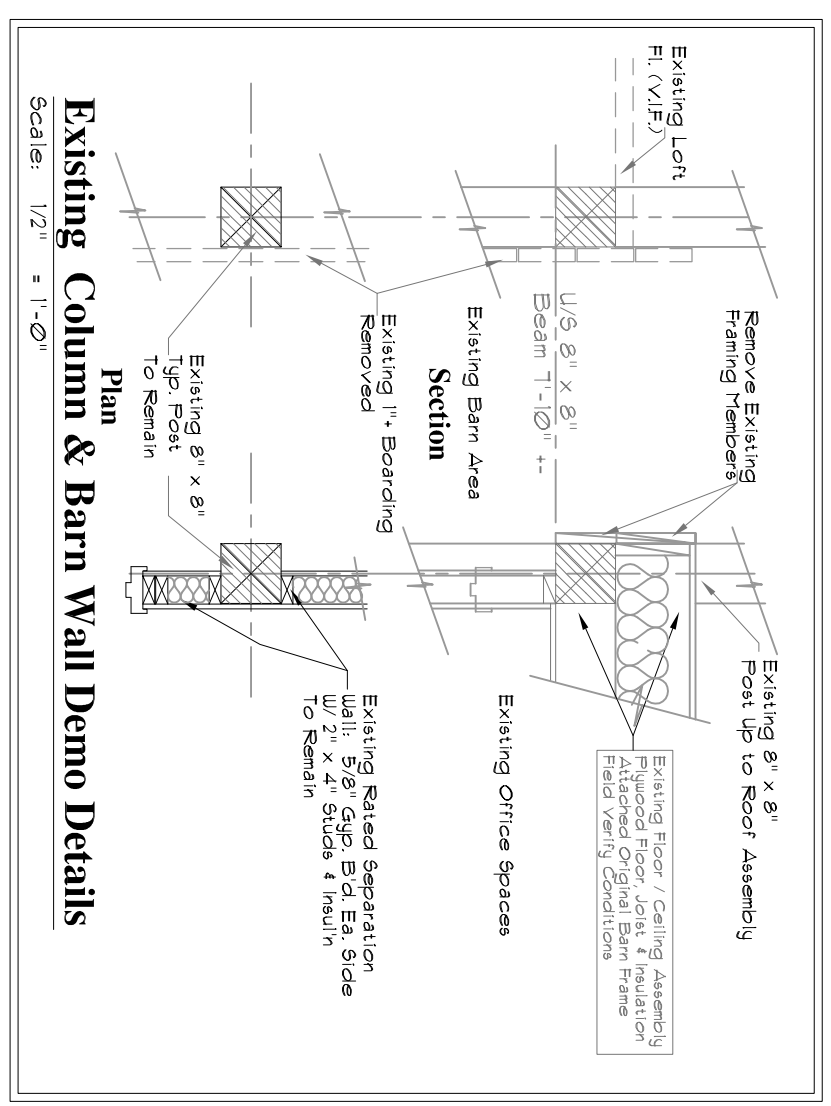
Existing Conditions First Floor / Demo Plan
Scale: 1/8" = 1'-0"



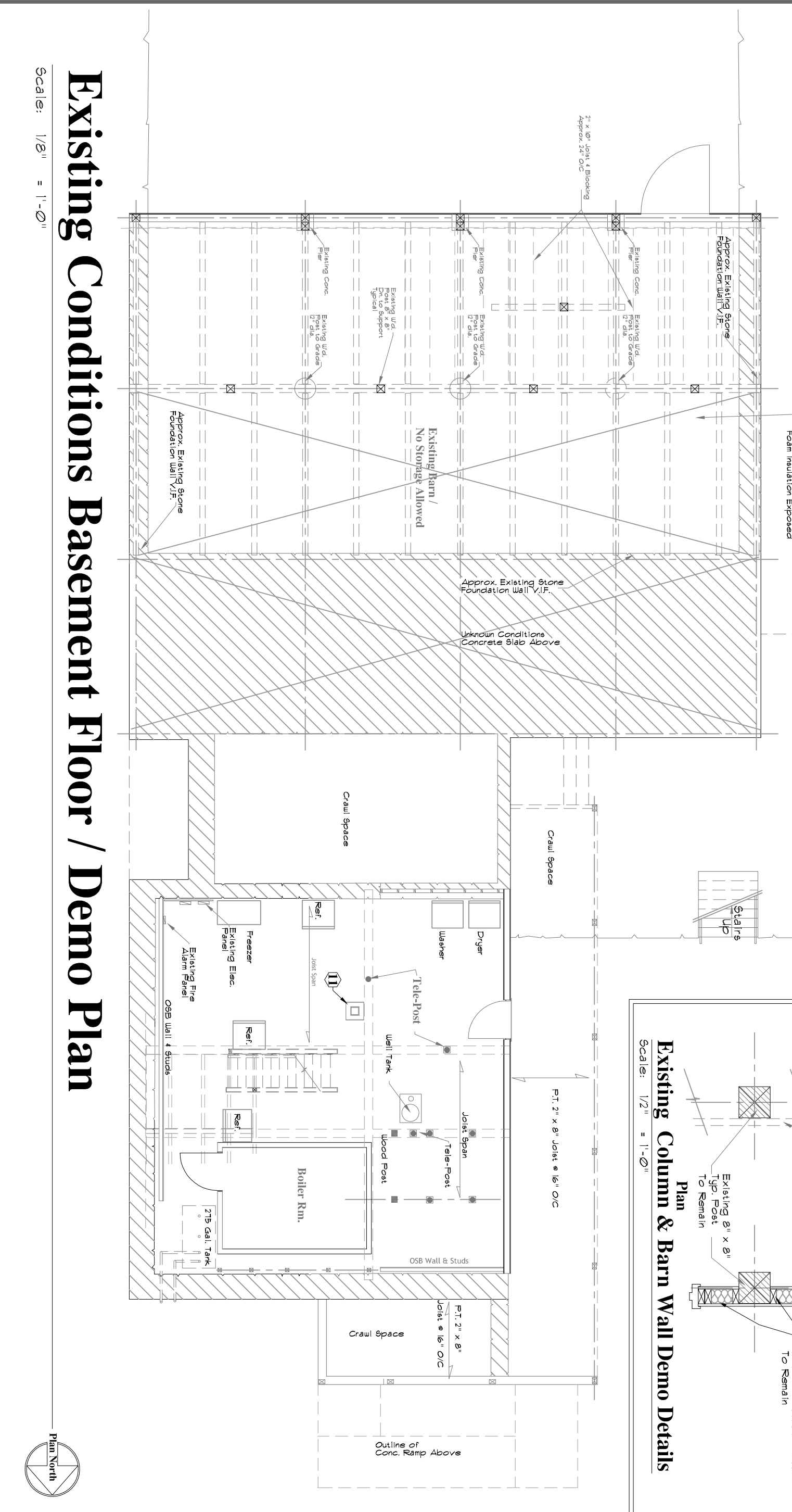
Existing Conditions Second Floor / Demo Plan
Scale: 1/8" = 1'-0"



Existing Conditions / Demolition Roof Plan
Scale: 1/16" = 1'-0"



Existing Column & Barn Wall Demo Details
Scale: 1/2" = 1'-0"



Existing Conditions Basement Floor / Demo Plan
Scale: 1/8" = 1'-0"

Demolition Work Notes:

- 1 Existing Vinyl Siding. Review and coordinate with electrical trades for the disconnection and removal of existing exterior electrical service. Coordinate piping back courses, cables, wires, hinges, clips, and temporary components. Remove all vinyl siding trim, accessories down to wood sheathing substrate (Existing approved building papers, immediate insulation and components, making good substrate ready for schedule New Work Review and Coordinate with New Work Drawings).
- 2 Existing Exterior Doors and Windows. Review and coordinate removal of all Existing Doors, Frames, Both Vinyl and Wood Window Assemblies, including all interior trim and fasteners, components. Prepare existing door and window openings for replacement with SCHEDULED NEW WORK AND DETAILS. Review and Coordinate with SCHEDULED NEW WORK AND DETAILS.
- 3 Interior Scheduling Demolition / Removal. All interior Finish, wall, ceiling, floor, and wall. All floor finish applications, Vinyl, carpeting, tiles, etc., down to original Substrate. Review and Coordinate with SCHEDULED NEW WORK AND DETAILS.
- 4 Existing Windows and Doors. Review and prepare rough opening for scheduled New Work / Window and provide all necessary framing. Review and Coordinate with SCHEDULED NEW WORK AND DETAILS.
- 5 Remove Existing Window and all trim. Review and prepare rough opening for scheduled New Work / Window and provide all necessary framing. Review and Coordinate with SCHEDULED NEW WORK AND DETAILS.
- 6 Remove existing door, frame and hardware, review and prepare rough opening for scheduled new work and details.
- 7 All hardware to be package, identified and delivered to Owner for storage and re-use as needed. Review and Coordinate with SCHEDULED NEW WORK AND DETAILS.
- 8 Remove existing wall assembly, including all existing wall studs, and wall to limit indicated, prepare remaining construction for New Work. Review and Coordinate with SCHEDULED NEW WORK AND DETAILS.
- 9 Disconnect and remove existing. Kitchen sink, and related plumbing. Carefully remove all existing cabinets, countertop and wall blocking. Review and Coordinate with SCHEDULED NEW WORK AND DETAILS.
- 10 Disconnect and remove all existing plumbing, electrical and exhaust ductwork and fan. Review and Coordinate with SCHEDULED NEW WORK AND DETAILS.
- 11 Remove all existing floor, wall, and ceiling finishes, sheetrock and casework. Review and Coordinate with SCHEDULED NEW WORK AND DETAILS.
- 12 Review and remove existing brick chimney from basement, level up to termination and roof line. Prepare existing opening at all levels for closure by new framing. Review and Coordinate with SCHEDULED NEW WORK AND DETAILS.
- 13 Remove existing wall, and ceiling finishes, sheetrock and prepare remaining. Review and Coordinate with SCHEDULED NEW WORK AND DETAILS.
- 14 Remove existing roof framing, sheathing and exterior wall to the limits indicated for New Work. Review and Coordinate with SCHEDULED NEW WORK AND DETAILS.
- 15 Remove all existing roofing shingles down to existing wood sheathing (substrate). Review and Coordinate with SCHEDULED NEW WORK AND DETAILS.
- 16 Remove all existing roof structure, sheathing, framing, framing. Prepare remaining wall surface to receive New Work. Review and Coordinate with SCHEDULED NEW WORK AND DETAILS.
- 17 Field Review and verify existing Over Head Garage Door and Track, frame and trim. Review existing substrate conditions. Review and Coordinate with SCHEDULED NEW WORK AND DETAILS.
- 18 Remove existing wood floor. Review and prepare rough opening for scheduled new work and details. Review and Coordinate with SCHEDULED NEW WORK AND DETAILS.
- 19 Remove Existing Barn doors and hardware and adjacent framing of existing floor assembly, including all existing concrete, floor preparation. Review and Coordinate with SCHEDULED NEW WORK AND DETAILS.
- 20 Existing 12" x 12" steel wall assembly. Review and remove existing construction, for new indicated door and frame assembly, including all existing concrete, floor preparation. Review and Coordinate with SCHEDULED NEW WORK AND DETAILS.
- 21 Review existing steel and I-Beam construction. Review and remove existing construction, for new indicated steel wall assembly, including all existing concrete, floor preparation. Review and Coordinate with SCHEDULED NEW WORK AND DETAILS.

Danielson Domestic Violence Shelter
Scheduled Renovations and Modernization's
Killingly, CT.

Fred Marzec - Architects, LLC
Architects and Planners
282 Franklin Street
Norwich, CT 06360
Tel: (860) 887-5870 Fax: (860) 887-5874
Email address: fred@fredmarzec.com

Copyright © 2019 Fred Marzec - Architects, LLC
The designs and drawings are the Property of Fred Marzec - Architects, LLC.
and were prepared as an instrument of service to the Owner in this request. They may not
be duplicated or used in part or whole in any other location, purpose, project or Owner
without the express written consent of Fred Marzec - Architects, LLC.

PROJECT NO: 2017-0312
DATE: DEC. 21, 2019

SCALE: AS NOTED
DRAWN BY: FRED M.
CHECKED BY: FRED M.

Existing Conditions
Basement
First Floor
Second Floor

EC/
FRED M.
ED-1

SHEET 07

36" x 24"