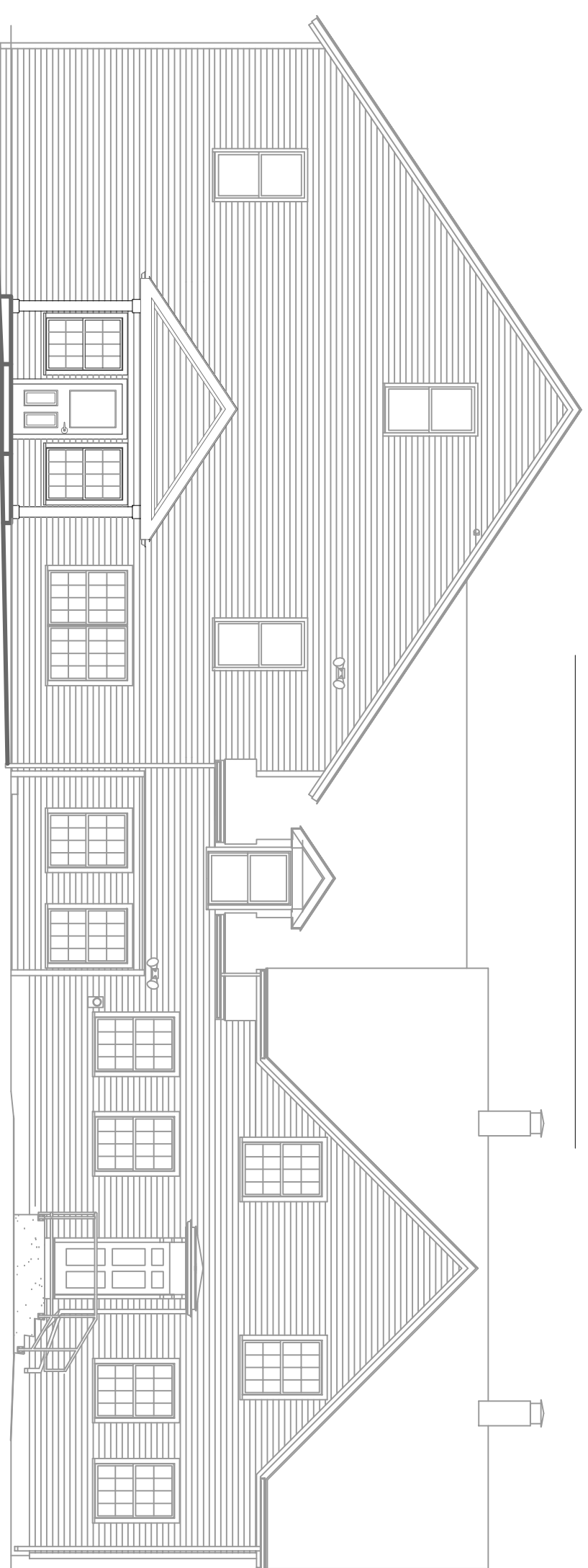


# Danielson Domestic Violence Shelter

## Scheduled Renovations and Modernization's

### Killingly, CT.

Dec. 23, 2019



**Fred Marzec - Architects, LLC**  
 Architects and Planners  
 282 Franklin Street  
 Norwich, CT 06360  
 Tel: (860) 887-5870 Fax: (860) 887-5874  
 Email Address: fred@fredmarzec.com

**CLA Engineers, Inc.**  
 CIVIL - STRUCTURAL - SURVEYING  
 917 Main Street Norwich, CT 06360  
 (860) 886-1986 Fax (860) 886-9165  
 www.zacharyclawson.com

**RZ Design Associates, Inc.**  
 Mechanical and Electrical  
 Engineering  
 750 OLD MAIN STREET  
 SUITE 202  
 ROCKY HILL, CT 06067  
 Tel: (860) 438-4450  
 F: (860) 438-4450  
 www.rzdesignassociates.com

**Drawing List:**

Fred Marzec-Architect, LLC	RZ Design Associates, Inc.
EC/ Existing Conditions Plans	MD-1 Mechanical Basement, First Floor, Second Floor Plans
ED-1 Existing Conditions Basement, First Floor & Second Floor	M-0 Mechanical Legend, Symbols, and Abbreviations
ED-2 Exterior Elevations, Window Replacement, and Siding Demolition, Window Replacement, and Door Replacement	M-1 Mechanical New Work
ED-3 Existing Conditions Exterior Barn	M-2 Mechanical Basement, First Floor, Second Floor Plans
EC/ Interior Demolition Door Replacement	M-3 Mechanical Details and Schedules
A-1 New Work Plans	M-4 Mechanical Specifications
A-2 Basement, First Floor & Second Floor New Work Plans	E-0 Electrical Symbols and Schedules
A-3 Roof Plan, RCP and Paving + Details	ED-1 Electrical Demolition Floor Plans
A-3 Exterior Elevations Roof Details & Window Schedule	E-1 Electrical Floor Plans
A-3-1 Plan Details, Room Elevations & New Dormer	E-2 Mechanical Mechanical Wiring Plans
A-4 New Work Existing Barn New Work & Building Sections	E-3 Electrical Electrical Specifications
A-5 Plan Details, Room, Elevations & New Dormer Work	PD-100 Pumping Demolition Basement, First Floor, Second Floor
A-6 New Work Conditions Door Schedules & Details, Room Finish Schedule	P-100 Pumping Basement, First Floor & Second Floor Plans
	P-200 Pumping Pumping Schedules & Details
	P-300 Pumping Pumping Specifications, Symbols & Abbreviations

**CLA Engineers - Structural**

S-0 Structural Notes  
 S-1 Layout Plans  
 S-2 Section At New Work  
 S-3 Structural Details

**MATERIALS LEGEND**

Existing Concr'n	Wood Blocking
Existing Brick	Finished Block
New Construction	Wood
Concrete	Galvan Board
Brick	Butt/Basket Insul.
Finish Grate	Rigid Insulation
Core, Materys Unit	Existing Concr'
Concrete	New Concr't
Steel	Existing Paving
Compacted Fill	New Paving
Undisturbed Soil	Plan Detail
ASBEA OR BOOR	
OR OCCUP	

**GRAPHIC LEGEND**

Room Number	Interior Room Elevation
Demolition	Mirror
New Work Note	SD
Wall Type	PTD
Section (Wall etc.)	Building Section
Column Grid Lines	Operating
	30" Cl
	48" Cl
	60" Cl
	72" Cl
	84" Cl
	96" Cl
	108" Cl
	120" Cl
	132" Cl
	144" Cl
	156" Cl
	168" Cl
	180" Cl
	192" Cl
	204" Cl
	216" Cl
	228" Cl
	240" Cl
	252" Cl
	264" Cl
	276" Cl
	288" Cl
	300" Cl

## CODE DATA:

### 2018 Connecticut State Building Code

2015 International Building Code  
 2015 International Mechanical Code  
 2015 International Plumbing Code  
 2015 International Energy Conservation Code  
 ICC / ANSI A17.1-2009 Accessible and Usable Building and Facilities  
 2017 National Electrical Code (NFPA-70)  
 CT. Amendments to the Above  
 NFPA-1 & 2019 CT. Fire Code  
 CSFSC - Connecticut State Fire Safety Code  
 Use Group R-3  
 Building Area as Designated: 3550 GSF +/- 1st. Floor  
 Existing Second Floor Area: 1400 SF +/-

### Fire-Resistance Rating Requirements for Building Elements (Hour)

Section 604: Height Modifications:  
 604.2 Automatic Sprinkler System: Where Non-Sprinklered Buildings No Adjustments are Made to the Required Fire-Resistance Rating.  
 604.3 Height Increase: 100 % Open Perimeter

**Table 601**  
 Fire-Resistance Rating Requirements for Building Elements (Hour)

Building Element	Type I	Type II	Type III	Type IV	Type V
Primary structural frame	3 <sup>h</sup>	1 <sup>h</sup>	1 <sup>h</sup>	1 <sup>h</sup>	1 <sup>h</sup>
Exterior walls	3 <sup>h</sup>	2 <sup>h</sup>	1 <sup>h</sup>	1 <sup>h</sup>	1 <sup>h</sup>
Non-bearing walls and partitions	3 <sup>h</sup>	2 <sup>h</sup>	1 <sup>h</sup>	1 <sup>h</sup>	1 <sup>h</sup>
Non-bearing walls and partitions	0	0	0	0	0
Interior	0	0	0	0	0
Roof construction and secondary members (see Section 207)	2	1	0	0	0
Roof construction and secondary members (see Section 207)	1/2 <sup>h</sup>	1 <sup>h</sup>	1 <sup>h</sup>	1 <sup>h</sup>	1 <sup>h</sup>

**Table 602**  
 Fire-Resistance Rating Requirements for Exterior Walls Based on Fire Separation Distances

Fire-separation Distance	Type of Construction	Group H <sup>1</sup>	Group F-1, H <sup>2</sup> , S-1 <sup>3</sup>	Group A, B, E, F-2, R, S-1, U
X < 5 <sup>4</sup>	All	3	2	1
5 < X < 10	IA, IVB	3	2	1 <sup>1</sup>
10 < X < 20	IA, VB, Others	1	0	1 <sup>1</sup>
X ≥ 20	All	0	0	0

**Table 603.3**  
 Interior Wall and Ceiling Finish Requirements by Occupancy

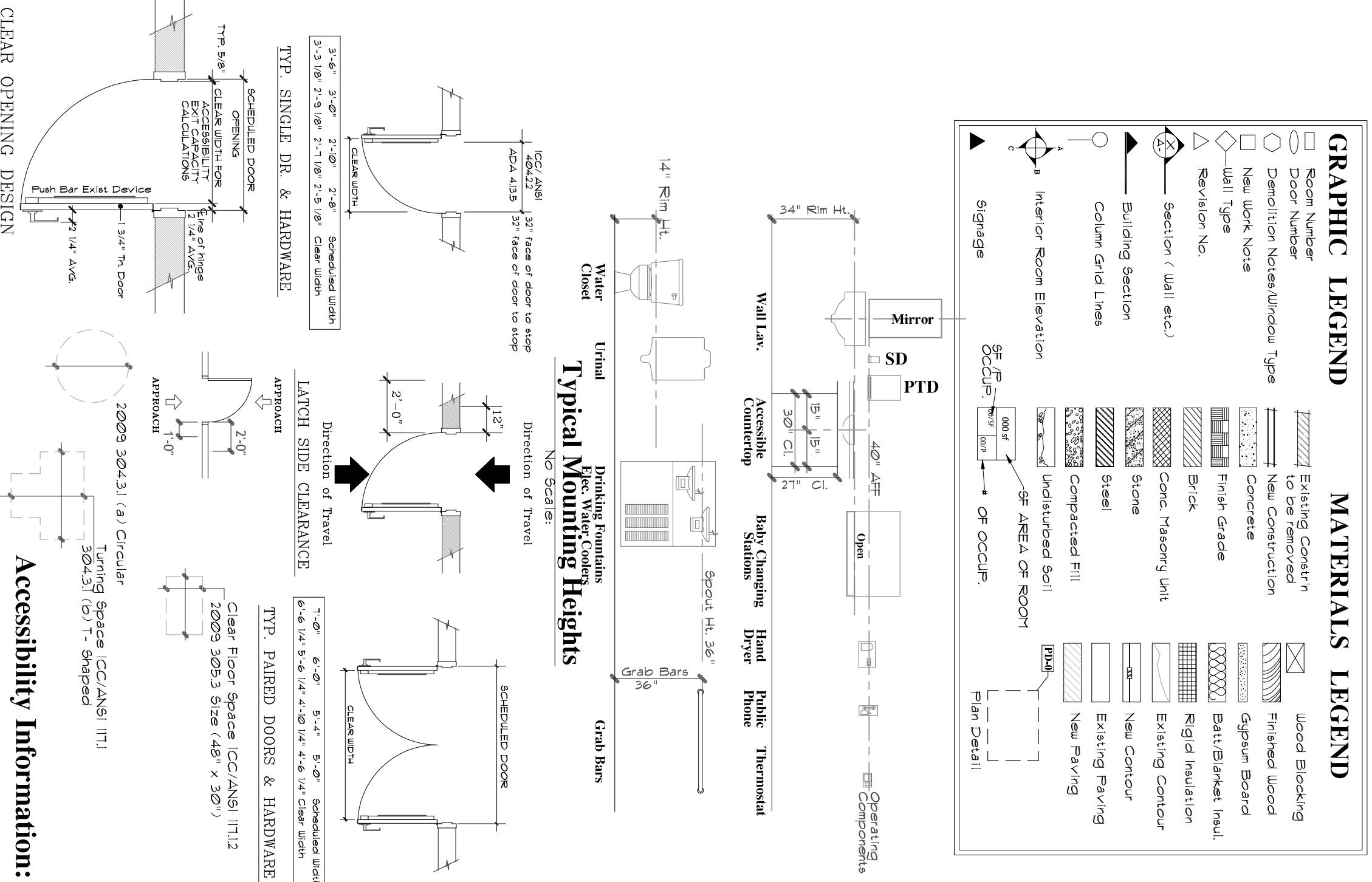
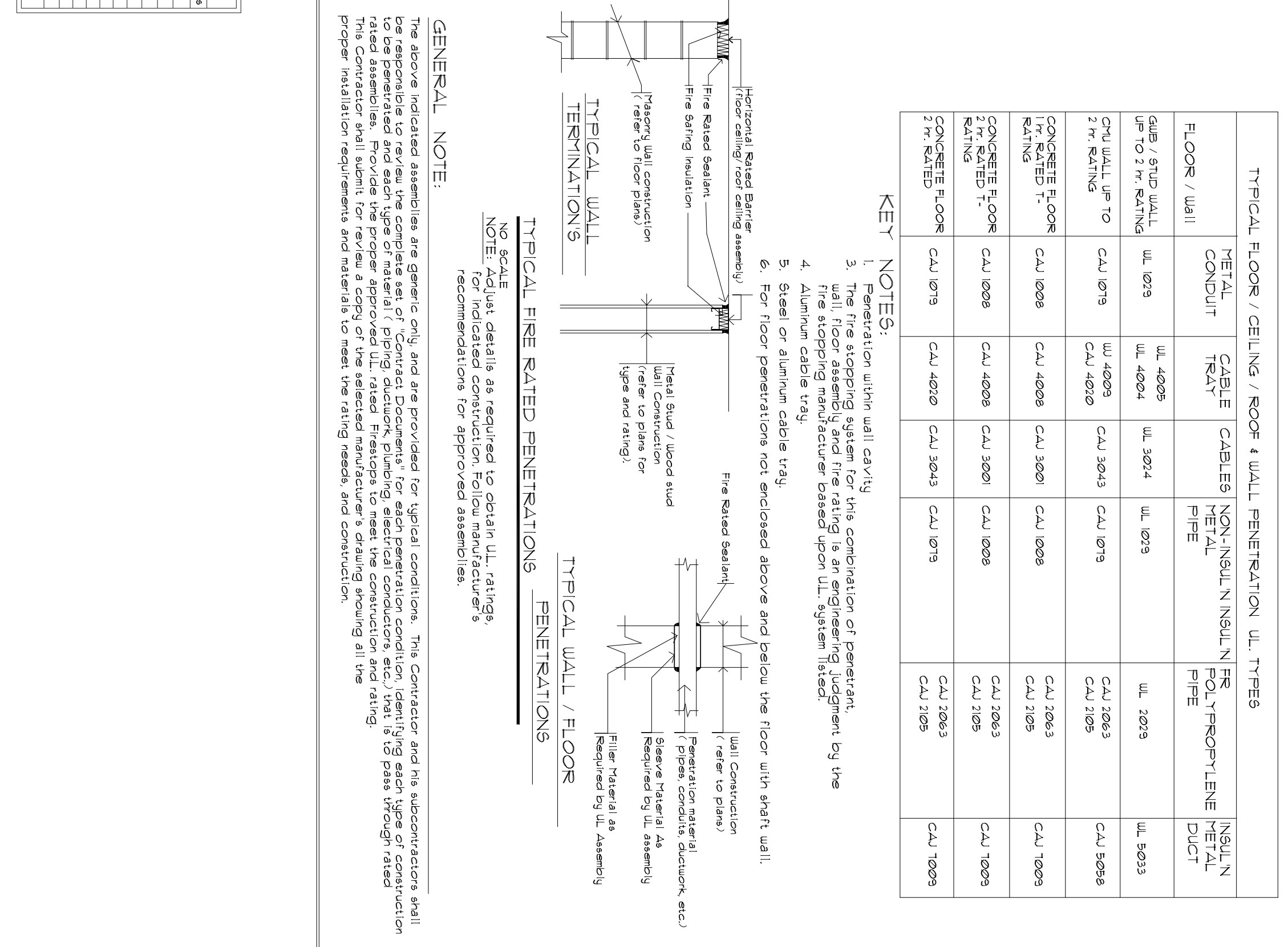
GROUP	SPRINKLED		NON-SPRINKLERED	
	Vertical exits and egress shafts	Rooms and egress shafts	Vertical exits and egress shafts	Rooms and egress shafts
A-1, A-2, A-3	A	C	A	C
A-3, A-4, A-5	B	C	A	C
B-1, B-2, B-3	B	C	B	C
B-4, B-5, B-6	B	C	B	C
F	B	C	A	C
H	B	C	A	C
I-1	B	C	A	C
I-2	B	C	B <sup>1</sup>	C
I-3	A	C	A	C
R-1	C	C	B	C
R-2	C	C	B	C
R-3	C	C	B	C
U	NO RESTRICTIONS	NO RESTRICTIONS	NO RESTRICTIONS	NO RESTRICTIONS

**Table 603.4**  
 Summary of Occupancy Automatic Sprinkler Treatments

Use Group / Occupancy	Exemption	Exemption
All Occupancies	Exemption: Sprinklered in accordance with Section 903.5.1.1.	Exemption: Sprinklered in accordance with Section 903.5.1.1.
Assembly (A-1, A-3, A-4)	Exemption: Sprinklered in accordance with Section 903.5.1.1.	Exemption: Sprinklered in accordance with Section 903.5.1.1.
Assembly (A-2)	Exemption: Sprinklered in accordance with Section 903.5.1.1.	Exemption: Sprinklered in accordance with Section 903.5.1.1.
Daycare (A-5)	Exemption: Sprinklered in accordance with Section 903.5.1.1.	Exemption: Sprinklered in accordance with Section 903.5.1.1.
Education (E-1)	Exemption: Sprinklered in accordance with Section 903.5.1.1.	Exemption: Sprinklered in accordance with Section 903.5.1.1.
Education (E-2)	Exemption: Sprinklered in accordance with Section 903.5.1.1.	Exemption: Sprinklered in accordance with Section 903.5.1.1.
Education (E-3)	Exemption: Sprinklered in accordance with Section 903.5.1.1.	Exemption: Sprinklered in accordance with Section 903.5.1.1.
Health care (H-1, H-2, H-3, H-4)	Exemption: Sprinklered in accordance with Section 903.5.1.1.	Exemption: Sprinklered in accordance with Section 903.5.1.1.
Hotel (H-5)	Exemption: Sprinklered in accordance with Section 903.5.1.1.	Exemption: Sprinklered in accordance with Section 903.5.1.1.
Manufacturing (M-1, M-2, M-3, M-4)	Exemption: Sprinklered in accordance with Section 903.5.1.1.	Exemption: Sprinklered in accordance with Section 903.5.1.1.
Medium (S-1, S-2, S-3)	Exemption: Sprinklered in accordance with Section 903.5.1.1.	Exemption: Sprinklered in accordance with Section 903.5.1.1.
Office (O-1)	Exemption: Sprinklered in accordance with Section 903.5.1.1.	Exemption: Sprinklered in accordance with Section 903.5.1.1.
Restaurant (R-1, R-2, R-3)	Exemption: Sprinklered in accordance with Section 903.5.1.1.	Exemption: Sprinklered in accordance with Section 903.5.1.1.
Storage (S-4)	Exemption: Sprinklered in accordance with Section 903.5.1.1.	Exemption: Sprinklered in accordance with Section 903.5.1.1.
Storage (S-5)	Exemption: Sprinklered in accordance with Section 903.5.1.1.	Exemption: Sprinklered in accordance with Section 903.5.1.1.
Storage (S-6)	Exemption: Sprinklered in accordance with Section 903.5.1.1.	Exemption: Sprinklered in accordance with Section 903.5.1.1.
Storage (S-7)	Exemption: Sprinklered in accordance with Section 903.5.1.1.	Exemption: Sprinklered in accordance with Section 903.5.1.1.
Storage (S-8)	Exemption: Sprinklered in accordance with Section 903.5.1.1.	Exemption: Sprinklered in accordance with Section 903.5.1.1.
Storage (S-9)	Exemption: Sprinklered in accordance with Section 903.5.1.1.	Exemption: Sprinklered in accordance with Section 903.5.1.1.
Storage (S-10)	Exemption: Sprinklered in accordance with Section 903.5.1.1.	Exemption: Sprinklered in accordance with Section 903.5.1.1.
Storage (S-11)	Exemption: Sprinklered in accordance with Section 903.5.1.1.	Exemption: Sprinklered in accordance with Section 903.5.1.1.
Storage (S-12)	Exemption: Sprinklered in accordance with Section 903.5.1.1.	Exemption: Sprinklered in accordance with Section 903.5.1.1.
Storage (S-13)	Exemption: Sprinklered in accordance with Section 903.5.1.1.	Exemption: Sprinklered in accordance with Section 903.5.1.1.
Storage (S-14)	Exemption: Sprinklered in accordance with Section 903.5.1.1.	Exemption: Sprinklered in accordance with Section 903.5.1.1.
Storage (S-15)	Exemption: Sprinklered in accordance with Section 903.5.1.1.	Exemption: Sprinklered in accordance with Section 903.5.1.1.
Storage (S-16)	Exemption: Sprinklered in accordance with Section 903.5.1.1.	Exemption: Sprinklered in accordance with Section 903.5.1.1.
Storage (S-17)	Exemption: Sprinklered in accordance with Section 903.5.1.1.	Exemption: Sprinklered in accordance with Section 903.5.1.1.
Storage (S-18)	Exemption: Sprinklered in accordance with Section 903.5.1.1.	Exemption: Sprinklered in accordance with Section 903.5.1.1.
Storage (S-19)	Exemption: Sprinklered in accordance with Section 903.5.1.1.	Exemption: Sprinklered in accordance with Section 903.5.1.1.
Storage (S-20)	Exemption: Sprinklered in accordance with Section 903.5.1.1.	Exemption: Sprinklered in accordance with Section 903.5.1.1.
Storage (S-21)	Exemption: Sprinklered in accordance with Section 903.5.1.1.	Exemption: Sprinklered in accordance with Section 903.5.1.1.
Storage (S-22)	Exemption: Sprinklered in accordance with Section 903.5.1.1.	Exemption: Sprinklered in accordance with Section 903.5.1.1.
Storage (S-23)	Exemption: Sprinklered in accordance with Section 903.5.1.1.	Exemption: Sprinklered in accordance with Section 903.5.1.1.
Storage (S-24)	Exemption: Sprinklered in accordance with Section 903.5.1.1.	Exemption: Sprinklered in accordance with Section 903.5.1.1.
Storage (S-25)	Exemption: Sprinklered in accordance with Section 903.5.1.1.	Exemption: Sprinklered in accordance with Section 903.5.1.1.
Storage (S-26)	Exemption: Sprinklered in accordance with Section 903.5.1.1.	Exemption: Sprinklered in accordance with Section 903.5.1.1.
Storage (S-27)	Exemption: Sprinklered in accordance with Section 903.5.1.1.	Exemption: Sprinklered in accordance with Section 903.5.1.1.
Storage (S-28)	Exemption: Sprinklered in accordance with Section 903.5.1.1.	Exemption: Sprinklered in accordance with Section 903.5.1.1.
Storage (S-29)	Exemption: Sprinklered in accordance with Section 903.5.1.1.	Exemption: Sprinklered in accordance with Section 903.5.1.1.
Storage (S-30)	Exemption: Sprinklered in accordance with Section 903.5.1.1.	Exemption: Sprinklered in accordance with Section 903.5.1.1.
Storage (S-31)	Exemption: Sprinklered in accordance with Section 903.5.1.1.	Exemption: Sprinklered in accordance with Section 903.5.1.1.
Storage (S-32)	Exemption: Sprinklered in accordance with Section 903.5.1.1.	Exemption: Sprinklered in accordance with Section 903.5.1.1.
Storage (S-33)	Exemption: Sprinklered in accordance with Section 903.5.1.1.	Exemption: Sprinklered in accordance with Section 903.5.1.1.
Storage (S-34)	Exemption: Sprinklered in accordance with Section 903.5.1.1.	Exemption: Sprinklered in accordance with Section 903.5.1.1.
Storage (S-35)	Exemption: Sprinklered in accordance with Section 903.5.1.1.	Exemption: Sprinklered in accordance with Section 903.5.1.1.
Storage (S-36)	Exemption: Sprinklered in accordance with Section 903.5.1.1.	Exemption: Sprinklered in accordance with Section 903.5.1.1.
Storage (S-37)	Exemption: Sprinklered in accordance with Section 903.5.1.1.	Exemption: Sprinklered in accordance with Section 903.5.1.1.
Storage (S-38)	Exemption: Sprinklered in accordance with Section 903.5.1.1.	Exemption: Sprinklered in accordance with Section 903.5.1.1.
Storage (S-39)	Exemption: Sprinklered in accordance with Section 903.5.1.1.	Exemption: Sprinklered in accordance with Section 903.5.1.1.
Storage (S-40)	Exemption: Sprinklered in accordance with Section 903.5.1.1.	Exemption: Sprinklered in accordance with Section 903.5.1.1.
Storage (S-41)	Exemption: Sprinklered in accordance with Section 903.5.1.1.	Exemption: Sprinklered in accordance with Section 903.5.1.1.
Storage (S-42)	Exemption: Sprinklered in accordance with Section 903.5.1.1.	Exemption: Sprinklered in accordance with Section 903.5.1.1.
Storage (S-43)	Exemption: Sprinklered in accordance with Section 903.5.1.1.	Exemption: Sprinklered in accordance with Section 903.5.1.1.
Storage (S-44)	Exemption: Sprinklered in accordance with Section 903.5.1.1.	Exemption: Sprinklered in accordance with Section 903.5.1.1.
Storage (S-45)	Exemption: Sprinklered in accordance with Section 903.5.1.1.	Exemption: Sprinklered in accordance with Section 903.5.1.1.
Storage (S-46)	Exemption: Sprinklered in accordance with Section 903.5.1.1.	Exemption: Sprinklered in accordance with Section 903.5.1.1.
Storage (S-47)	Exemption: Sprinklered in accordance with Section 903.5.1.1.	Exemption: Sprinklered in accordance with Section 903.5.1.1.
Storage (S-48)	Exemption: Sprinklered in accordance with Section 903.5.1.1.	Exemption: Sprinklered in accordance with Section 903.5.1.1.
Storage (S-49)	Exemption: Sprinklered in accordance with Section 903.5.1.1.	Exemption: Sprinklered in accordance with Section 903.5.1.1.
Storage (S-50)	Exemption: Sprinklered in accordance with Section 903.5.1.1.	Exemption: Sprinklered in accordance with Section 903.5.1.1.

**Table 603.5**  
 Typical Fire Rated Penetrations

Occupancy	Without Sprinklers	With Sprinklers
A, E, H, I, M, R, S-1	200	250 <sup>2</sup>
D	Not Permitted	250 <sup>2</sup>
F-1, F-2	200	250 <sup>2</sup>
F-3, S-2, U	200	250 <sup>2</sup>
H-1	Not Permitted	250 <sup>2</sup>
H-2	Not Permitted	250 <sup>2</sup>
H-3	Not Permitted	250 <sup>2</sup>
H-4	Not Permitted	250 <sup>2</sup>
H-5	Not Permitted	250 <sup>2</sup>
H-6	Not Permitted	250 <sup>2</sup>
H-7	Not Permitted	250 <sup>2</sup>
H-8	Not Permitted	250 <sup>2</sup>
H-9	Not Permitted	250 <sup>2</sup>
H-10	Not Permitted	250 <sup>2</sup>
H-11	Not Permitted	250 <sup>2</sup>
H-12	Not Permitted	250 <sup>2</sup>
H-13	Not Permitted	250 <sup>2</sup>
H-14	Not Permitted	250 <sup>2</sup>
H-15	Not Permitted	250 <sup>2</sup>
H-16	Not Permitted	250 <sup>2</sup>
H-17	Not Permitted	250 <sup>2</sup>
H-18	Not Permitted	250 <sup>2</sup>
H-19	Not Permitted	250 <sup>2</sup>
H-20	Not Permitted	250 <sup>2</sup>
H-21	Not Permitted	250 <sup>2</sup>
H-22	Not Permitted	250 <sup>2</sup>
H-23	Not Permitted	250 <sup>2</sup>
H-24	Not Permitted	250 <sup>2</sup>
H-25	Not Permitted	250 <sup>2</sup>
H-26	Not Permitted	250 <sup>2</sup>
H-27	Not Permitted	250 <sup>2</sup>
H-28	Not Permitted	250 <sup>2</sup>
H-29	Not Permitted	250 <sup>2</sup>
H-30	Not Permitted	250 <sup>2</sup>
H-31	Not Permitted	250 <sup>2</sup>
H-32	Not Permitted	250 <sup>2</sup>
H-33	Not Permitted	250 <sup>2</sup>
H-34	Not Permitted	250 <sup>2</sup>
H-35	Not Permitted	250 <sup>2</sup>
H-36	Not Permitted	250 <sup>2</sup>
H-37	Not Permitted	250 <sup>2</sup>
H-38	Not Permitted	250 <sup>2</sup>
H-39	Not Permitted	250 <sup>2</sup>
H-40	Not Permitted	250 <sup>2</sup>
H-41	Not Permitted	250 <sup>2</sup>
H-42	Not Permitted	250 <sup>2</sup>
H-43	Not Permitted	250 <sup>2</sup>
H-44	Not Permitted	250 <sup>2</sup>
H-45	Not Permitted	250 <sup>2</sup>
H-46	Not Permitted	250 <sup>2</sup>
H-47	Not Permitted	250 <sup>2</sup>
H-48	Not Permitted	250 <sup>2</sup>
H-49	Not Permitted	250 <sup>2</sup>
H-50	Not Permitted	250 <sup>2</sup>



**Accessibility Information:**