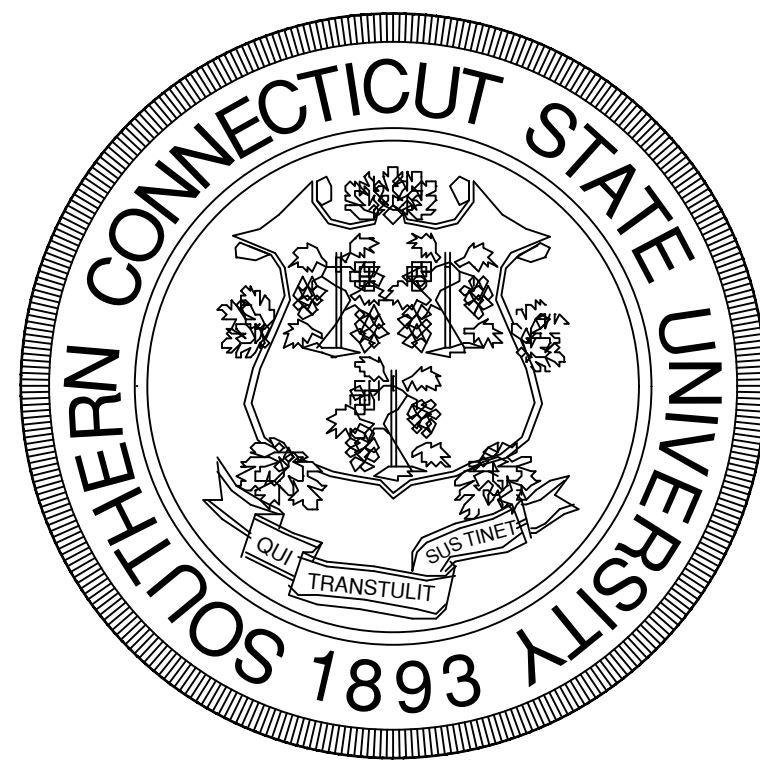


SOUTHERN CONNECTICUT STATE UNIVERSITY

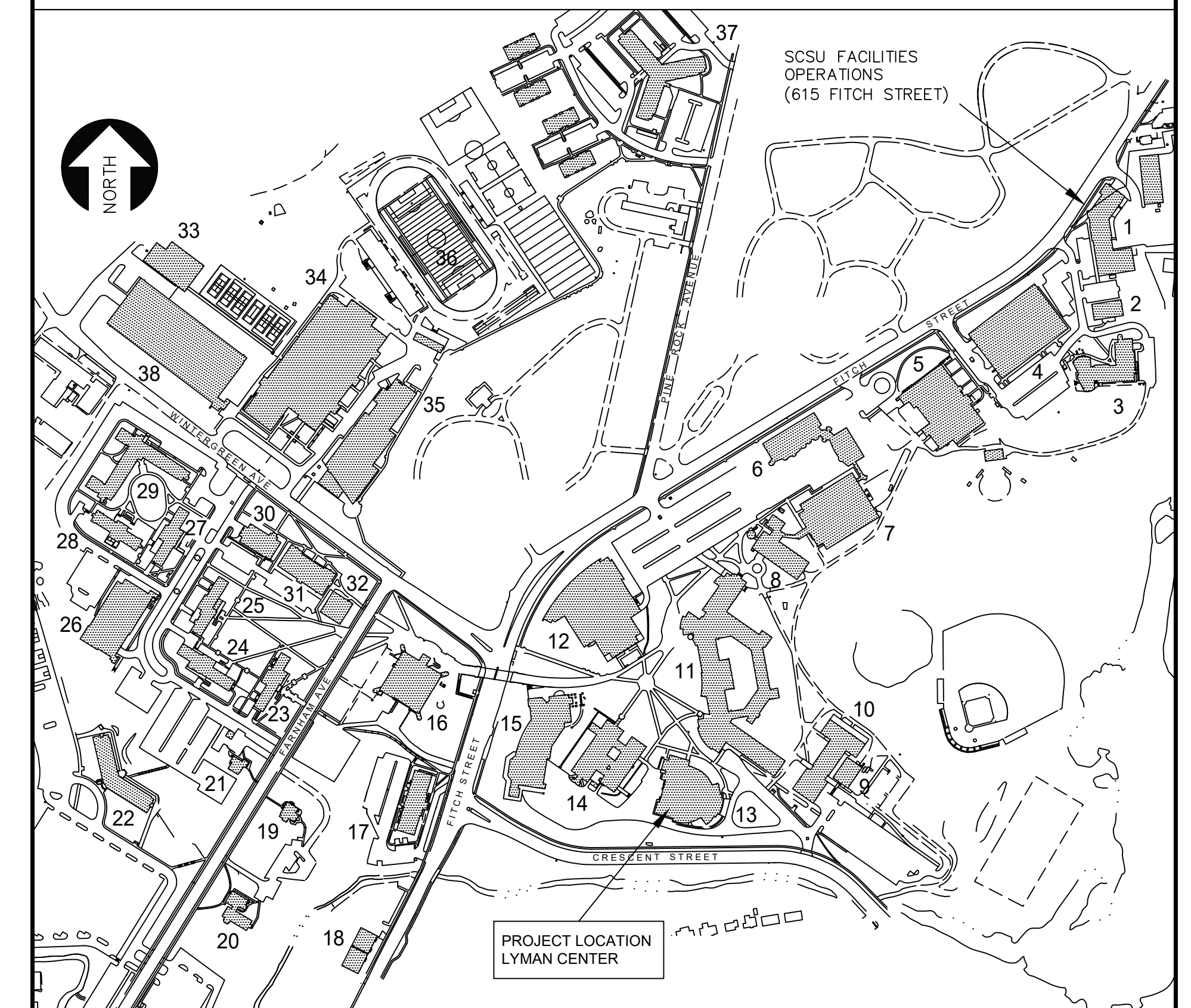


**DR. JOSEPH A. BERTOLINO
PRESIDENT**

LYMAN CENTER - STAGE RIGGING AND DRAPERIES

PROJECT NO. SCSU-2019-07

LOCATION MAP



BUILDING NUMBER LEGEND

- | | |
|--|--|
| 1 FACILITIES OPERATIONS | 22 BROWNELL HALL - RESIDENCE HALL |
| 2 NURSING CLASSROOM BUILDING | 23 FARNHAM HALL - RESIDENCE HALL |
| 3 DAVIS HALL | 24 WILKINSON HALL - RESIDENCE HALL |
| 4 FITCH STREET PARKING GARAGE | 25 CHASE HALL - RESIDENCE HALL |
| 5 PELZ GYMNASIUM | 26 WEST CAMPUS PARKING GARAGE |
| 6 ACADEMIC SCIENCE AND LABORATORY BUILDING | 27 HICKERSON HALL - RESIDENCE HALL |
| 7 JENNINGS HALL | 28 NEFF HALL - RESIDENCE HALL |
| 8 MORRILL HALL | 29 WEST CAMPUS RESIDENCE COMPLEX |
| 9 TE-8 - CLASSROOM BUILDING 8 | 30 UNIVERSITY POLICE AND GRANOFF STUDENT HEALTH CENTER |
| 10 SCHOOL OF BUSINESS | 31 OFFICE BUILDING 1 |
| 11 ENGLEMAN HALL | 32 TE-8 - TEMPORARY BUILDING 6 |
| 12 BULEY LIBRARY | 33 ENERGY CENTER |
| 13 LYMAN CENTER FOR THE PERFORMING ARTS | 34 MOORE FIELD HOUSE |
| 14 EARL HALL | 35 WINTERGREEN BUILDING |
| 15 ADANTI STUDENT CENTER | 36 JESS DOW FIELD |
| 16 CONNECTICUT HALL - FOOD SERVICE | 37 NORTH CAMPUS RESIDENCE COMPLEX |
| 17 SCHWARTZ HALL - RESIDENCE HOUSING OFFICE | 38 WINTERGREEN AVENUE PARKING GARAGE |
| 18 270 FITCH STREET WAREHOUSES | |
| 19 ALUMNI HOUSE | |
| 20 LANG HOUSE - DEPARTMENT OF SOCIAL WORK | |
| 21 ORLANDO HOUSE - DEPARTMENT OF PUBLIC HEALTH | |

SOUTHERN CONNECTICUT STATE UNIVERSITY, OFFICE OF FACILITIES PLANNING AND ARCHITECTURAL SERVICES, 615 FITCH STREET, HAMDEN, CT 06514, UNIVERSITY REPRESENTATIVE: PAUL F. LOESCHER A.I.A TEL (203) 392-6055 FAX (203) 392-6058

LIST OF DRAWINGS

- C1 COVER SHEET AND LOCATION MAP
- XT-101 THEATER EQUIPMENT PLAN & SCHEDULES
- XT-102 THEATER EQUIPMENT SECTION
- XT-103 THEATER EQUIPMENT ELEVATIONS & DETAILS

SET NO.

DATE:
OCTOBER 30, 2019

SHEET NO.

C1

LINE SET NO.	DESCRIPTION	H	W	QTY	FABRIC	LINING	FULLNESS	COLOR	TOP FINISH	BOTTOM FINISH	SIDE FINISH	NOTES
0	HOUSE VALANCE	3'-8"	60'-0"	1	32 OZ IFR VELOUR	IFR AVORA	100% SEWN IN	ROSE BRAND NAVY BLUE	GROMMETS WITH TIES	6" HEM WITH SEWN-IN CHAIN	3" HEM	
1	LEGS	25'-0"	18'-0"	2	32 OZ IFR VELOUR	IFR AVORA	50% SEWN IN	BLACK	GROMMETS WITH SNAP HOOKS	6" HEM WITH SEWN-IN CHAIN	3" HEM	
2	HOUSE CURTAIN	25'-0"	36'-0"	2	32 OZ IFR VELOUR	IFR AVORA	100% SEWN IN	ROSE BRAND NAVY BLUE	GROMMETS WITH SNAP HOOKS	6" HEM WITH SEWN-IN CHAIN	3" HEM	
3	BORDER	8'-0"	36'-0"	2	32 OZ IFR VELOUR	IFR AVORA	50% SEWN IN	BLACK	GROMMETS WITH SNAP HOOKS	6" HEM WITH SEWN-IN CHAIN	3" HEM	
5	LEGS	25'-0"	18'-0"	2	32 OZ IFR VELOUR	IFR AVORA	50% SEWN IN	BLACK	GROMMETS WITH SNAP HOOKS	6" HEM WITH SEWN-IN CHAIN	3" HEM	
6	BORDER	12'-0"	36'-0"	2	32 OZ IFR VELOUR	IFR AVORA	50% SEWN IN	BLACK	GROMMETS WITH SNAP HOOKS	6" HEM WITH SEWN-IN CHAIN	3" HEM	
7	BORDER	8'-0"	55'-0"	1	32 OZ IFR VELOUR	IFR AVORA	50% SEWN IN	BLACK	GROMMETS WITH TIES	6" HEM WITH SEWN-IN CHAIN	3" HEM	
8	PROJECTION SCREEN			1	USE EXISTING							REHANG PROJECTION SCREEN WITH BLACK DOUGHTY LOW PROFILE HOOK CLAMPS (OR APPROVED EQUAL)
9	LEGS	25'-0"	18'-0"	2	32 OZ IFR VELOUR	IFR AVORA	50% SEWN IN	BLACK	GROMMETS WITH SNAP HOOKS	6" HEM WITH SEWN-IN CHAIN	3" HEM	
11	TRAVELER	25'-0"	42'-0"	2	32 OZ IFR VELOUR	IFR AVORA	50% SEWN IN	BLACK	GROMMETS WITH SNAP HOOKS	6" HEM WITH SEWN-IN CHAIN	3" HEM	
13	CYCLORAMA	24'-0"	60'-0"	1	USE EXISTING	-	-	WHITE	USE EXISTING	USE EXISTING	USE EXISTING	USE EXISTING CYCLORAMA

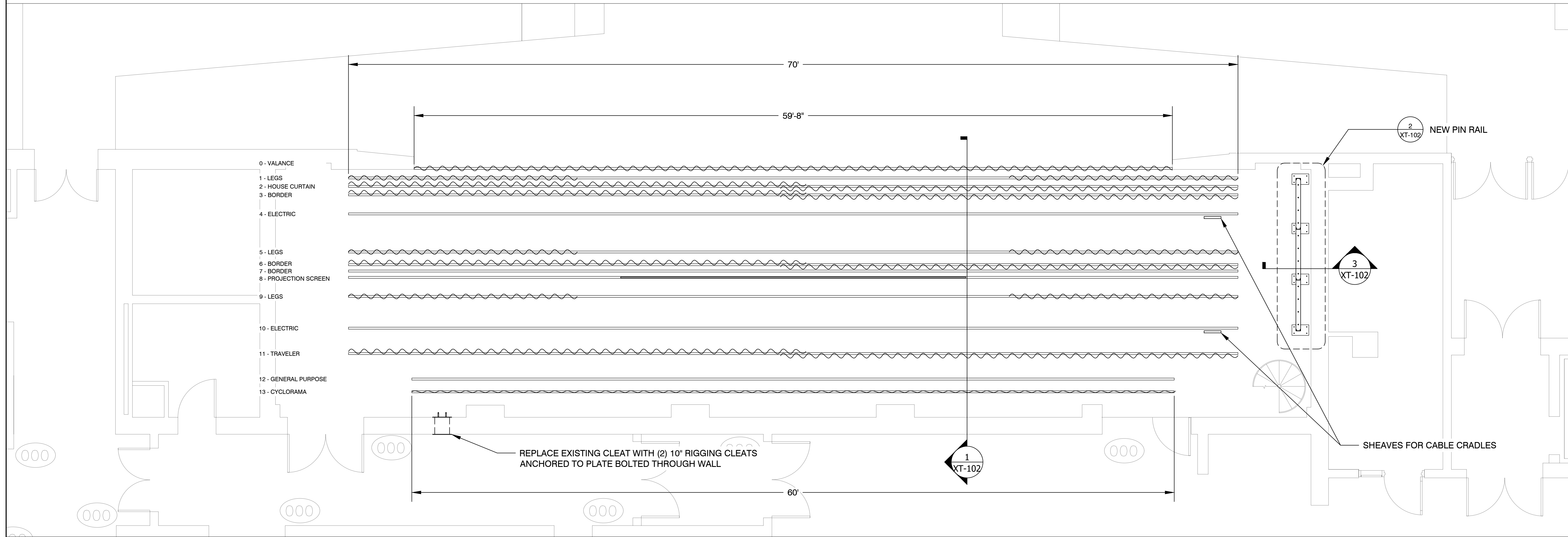
3 DRAPERYS SCHEDULE

LINE SET NO.	DISTANCE FROM PLASTER	DESCRIPTION	TYPE	DRAWING	BATTEN LENGTH	BATTEN TYPE	BATTEN TRIM HEIGHT	BOTTOM TRIM HEIGHT	NOTES
0	0'-0"	HOUSE VALANCE	DEADHUNG		60'-0"	N/A	23'-9"	20'-0"	FASTENED DIRECTLY TO WOOD BEAM UNDER PROSCENIUM.
1	0'-8"	LEGS	DEADHUNG	1/XT-103	70'-0"	SINGLE	26'-3"	FLOOR	RIGGED TO TRACK ON/OFF ON (2) SEPARATE 20'-0" LENGTHS OF H&H 418PB CWANA TRAVELER TRACK WITH FLOOR BLOCKS ON BOTH SIDES OF STAGE
2	1'-4"	HOUSE CURTAIN	DEADHUNG	1/XT-103	70'-0"	SINGLE	26'-3"	FLOOR	RIGGED TO BI-PART ON (2) LENGTHS OF H&H 418PB CWANA TRAVELER TRACK WITH 2'-0" OVERLAP AT CENTER WITH FLOOR BLOCK STAGE LEFT
3	2'-0"	BORDER	DEADHUNG	1/XT-103	72'-0"	SINGLE	28'-3"	19'-0"	RIGGED TO BI-PART ON (2) LENGTHS OF H&H 418PB CWANA TRAVELER TRACK WITH 2'-0" OVERLAP AT CENTER WITH FLOOR BLOCK STAGE LEFT
4	3'-6"	ELECTRIC	DEADHUNG	1/XT-103	70'-0"	DOUBLE	23'-0"	-	PROVIDE WITH CABLE CRADLE ON MANUAL HANDLINE
5	6'-6"	LEGS	DEADHUNG	1/XT-103	70'-0"	SINGLE	26'-3"	FLOOR	RIGGED TO TRACK ON/OFF ON (2) SEPARATE 20'-0" LENGTHS OF H&H 418PB CWANA TRAVELER TRACK WITH FLOOR BLOCKS ON BOTH SIDES OF STAGE
6	7'-6"	BORDER	DEADHUNG	1/XT-103	70'-0"	SINGLE	29'-3"	16'-0"	RIGGED TO BI-PART ON (2) LENGTHS OF H&H 418PB CWANA TRAVELER TRACK WITH 2'-0" OVERLAP AT CENTER WITH FLOOR BLOCK STAGE LEFT
7	8'-0"	BORDER	MANUAL FLY	2/XT-103	70'-0"	DOUBLE	VARIABLE	VARIABLE	INSTALL WITH 150-POUND SAND BAG AS PIPE WEIGHT
8	8'-6"	PROJECTION SCREEN	MANUAL FLY	2/XT-103	70'-0"	SINGLE	VARIABLE	VARIABLE	INSTALL WITH 150-POUND SAND BAG AS PIPE WEIGHT
9	10'-0"	LEGS	DEADHUNG	1/XT-103	70'-0"	SINGLE	26'-3"	FLOOR	RIGGED TO TRACK ON/OFF ON (2) SEPARATE 20'-0" LENGTHS OF H&H 418PB CWANA TRAVELER TRACK WITH FLOOR BLOCKS ON BOTH SIDES OF STAGE
10	12'-6"	ELECTRIC	DEADHUNG	1/XT-103	70'-0"	DOUBLE	23'-0"	-	PROVIDE WITH CABLE CRADLE ON MANUAL HANDLINE
11	14'-6"	TRAVELER	DEADHUNG	1/XT-103	70'-0"	SINGLE	26'-3"	FLOOR	RIGGED TO BI-PART ON (2) LENGTHS OF H&H 418PB CWANA TRAVELER TRACK WITH 2'-0" OVERLAP AT CENTER WITH FLOOR BLOCK STAGE LEFT
12	16'-6"	GENERAL PURPOSE	MANUAL FLY	2/XT-103	60'-0"	SINGLE	VARIABLE	VARIABLE	INSTALL WITH 150-POUND SAND BAG AS PIPE WEIGHT, TIES OFF TO CLEAT ON UPSTAGE LEFT WALL
13	17'-6"	CYCLORAMA	MANUAL FLY	2/XT-103	60'-0"	SINGLE	VARIABLE	VARIABLE	INSTALL WITH 150-POUND SAND BAG AS PIPE WEIGHT, TIES OFF TO CLEAT ON UPSTAGE LEFT WALL

- NOTES:**
- REMOVE AND DISPOSE OF ALL EXISTING RIGGING AND DRAPERIES
 - SAVE EXISTING ELECTRICS BATTENS WITH RACEWAYS, SAND BAGS, PROJECTION SCREEN, AND CYCLORAMA FOR REUSE
 - RE-INSTALL PROJECTION SCREEN WITH LOW PROFILE HARDWARE AS SHOWN ON DRAWINGS

4 NOTES

2 LINESET SCHEDULE



1 RIGGING PLAN

nextstage design

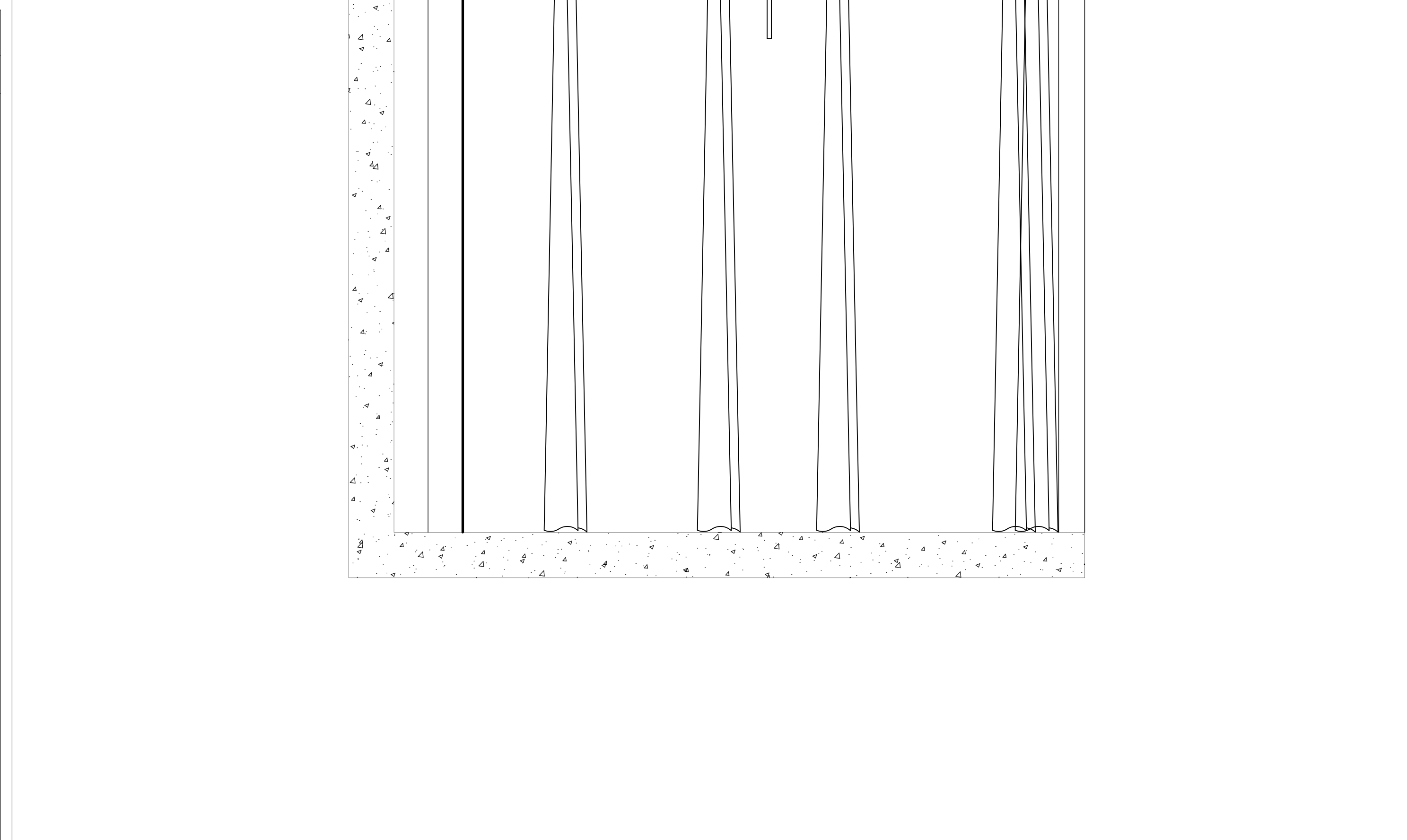
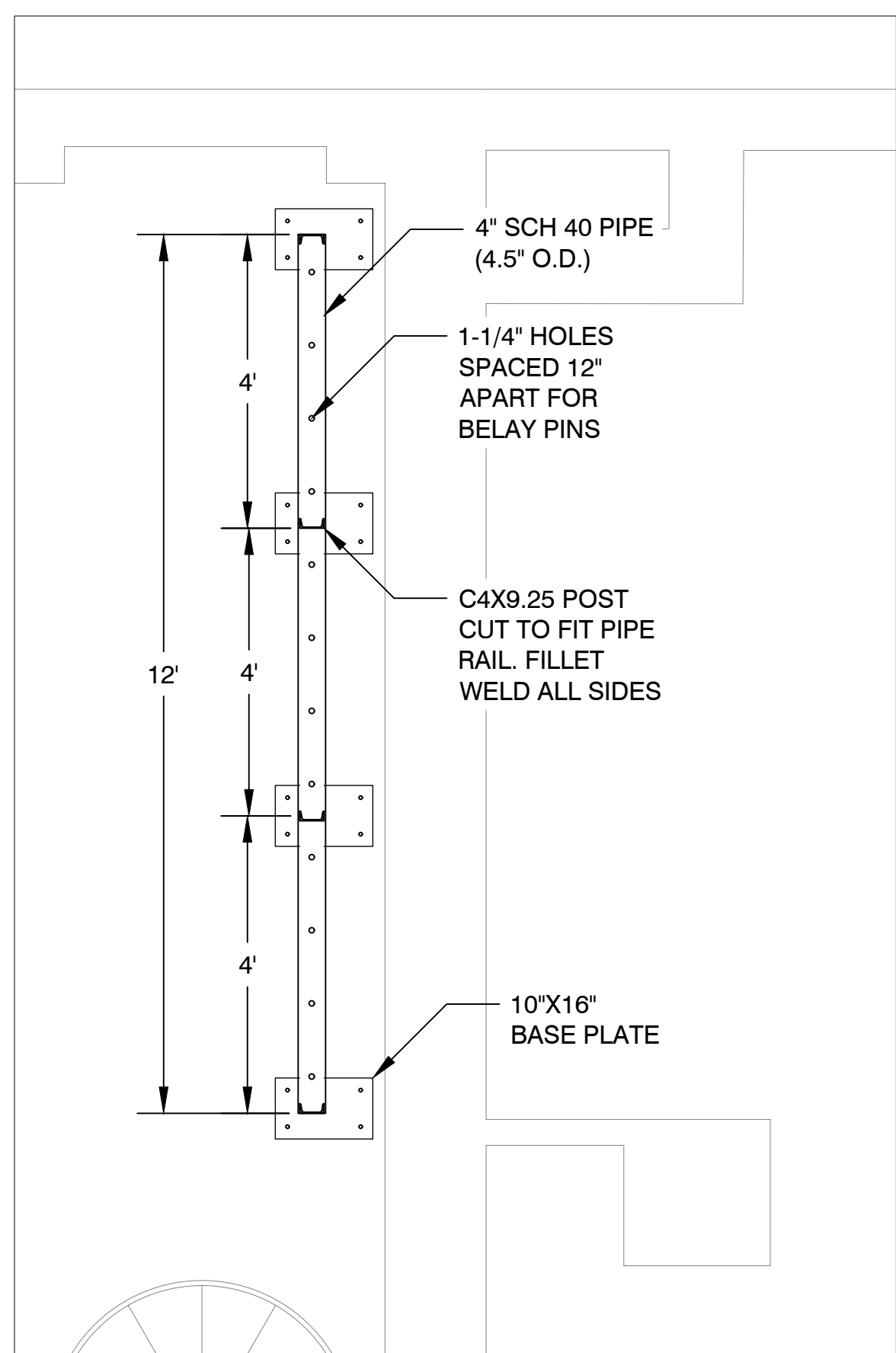
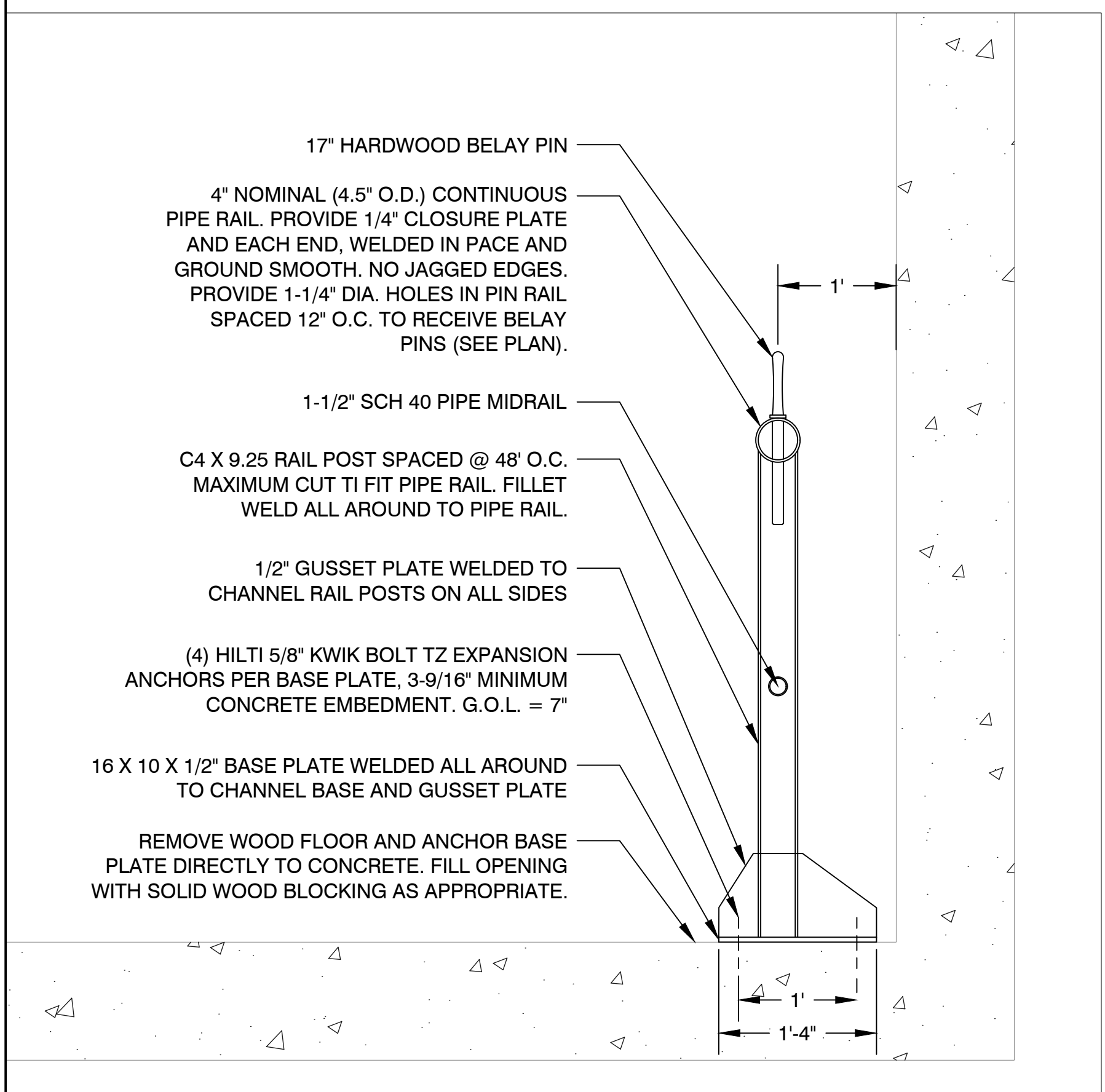
900 Chapel Street
10th Floor
New Haven CT 06510
203 936 6565
nextstage-online.com

PROJECT NAME
Lyman Center - Stage Rigging and Draperies
Southern Connecticut State University
501 Crescent Street
New Haven, CT 06515

PROJECT NUMBER
SCSU-2019-07

ISSUE DATE
BID DOCUMENTS 10/30/19

SHEET TITLE
THEATER EQUIPMENT PLAN & SCHEDULES
SHEET NUMBER



3 PIN RAIL ELEVATION 1" = 1'-0"

2 PIN RAIL PLAN 1/2" = 1'-0"

1 CENTERLINE SECTION 3/8" = 1'-0"

nextstage design
 900 Chapel Street
 10th Floor
 New Haven CT 06510
 203 936 6565
 nextstage-online.com

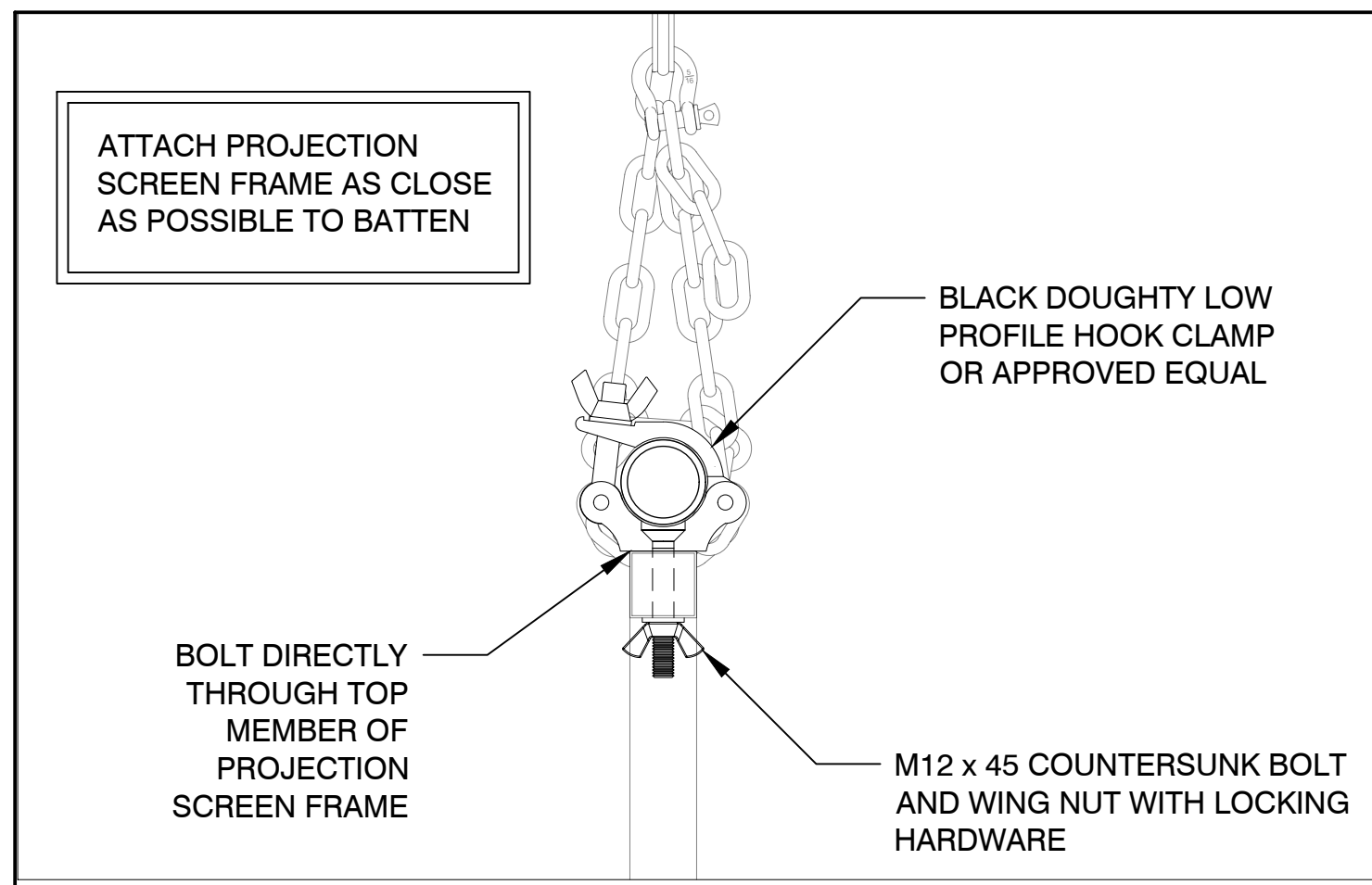
PROJECT NAME
Lyman Center - Stage Rigging and Draperies
 Southern Connecticut State University
 501 Crescent Street
 New Haven, CT 06515

PROJECT NUMBER
 SCSU-2019-07

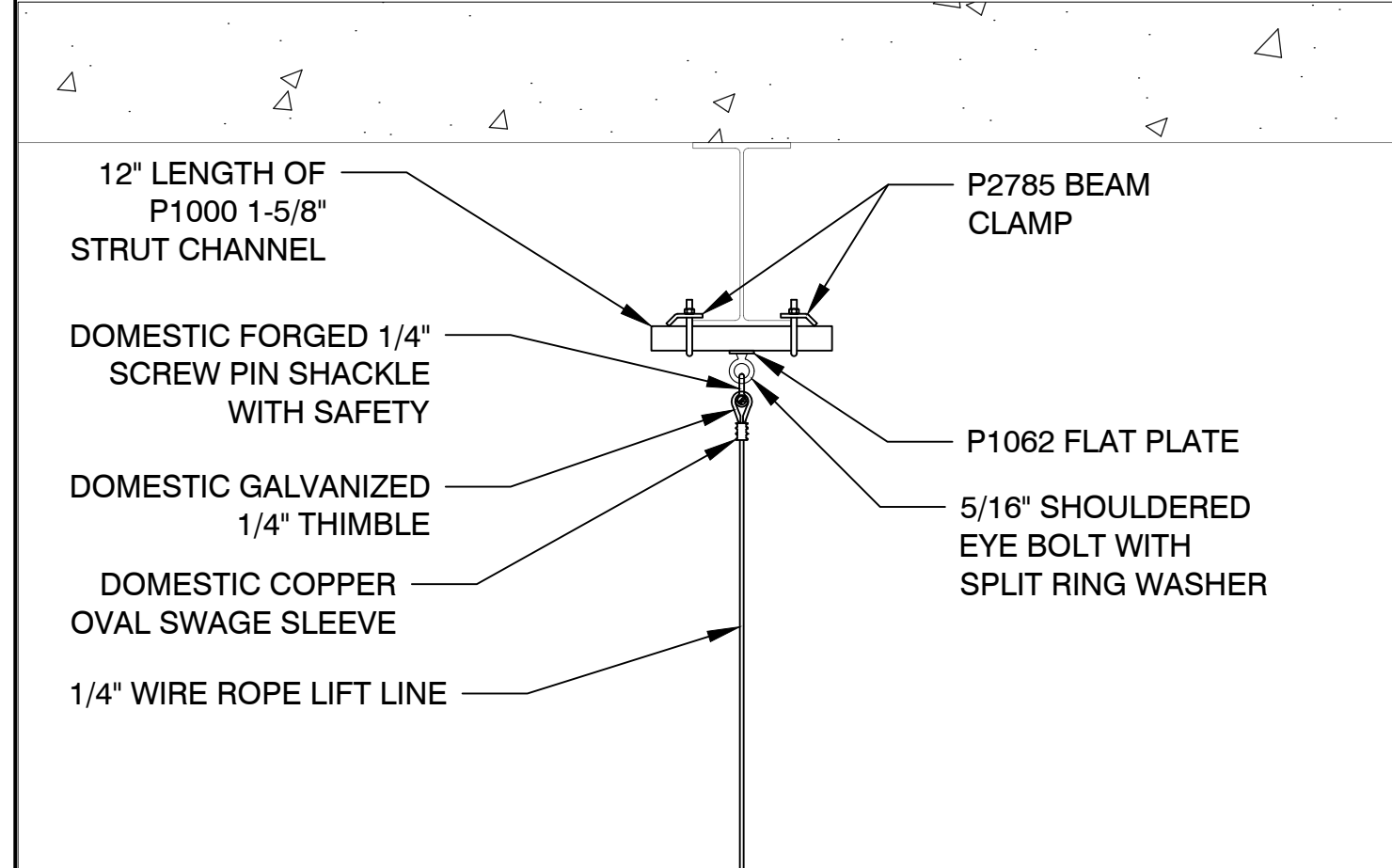
ISSUE	DATE
BID DOCUMENTS	10/30/19

SHEET TITLE
THEATER EQUIPMENT SECTION

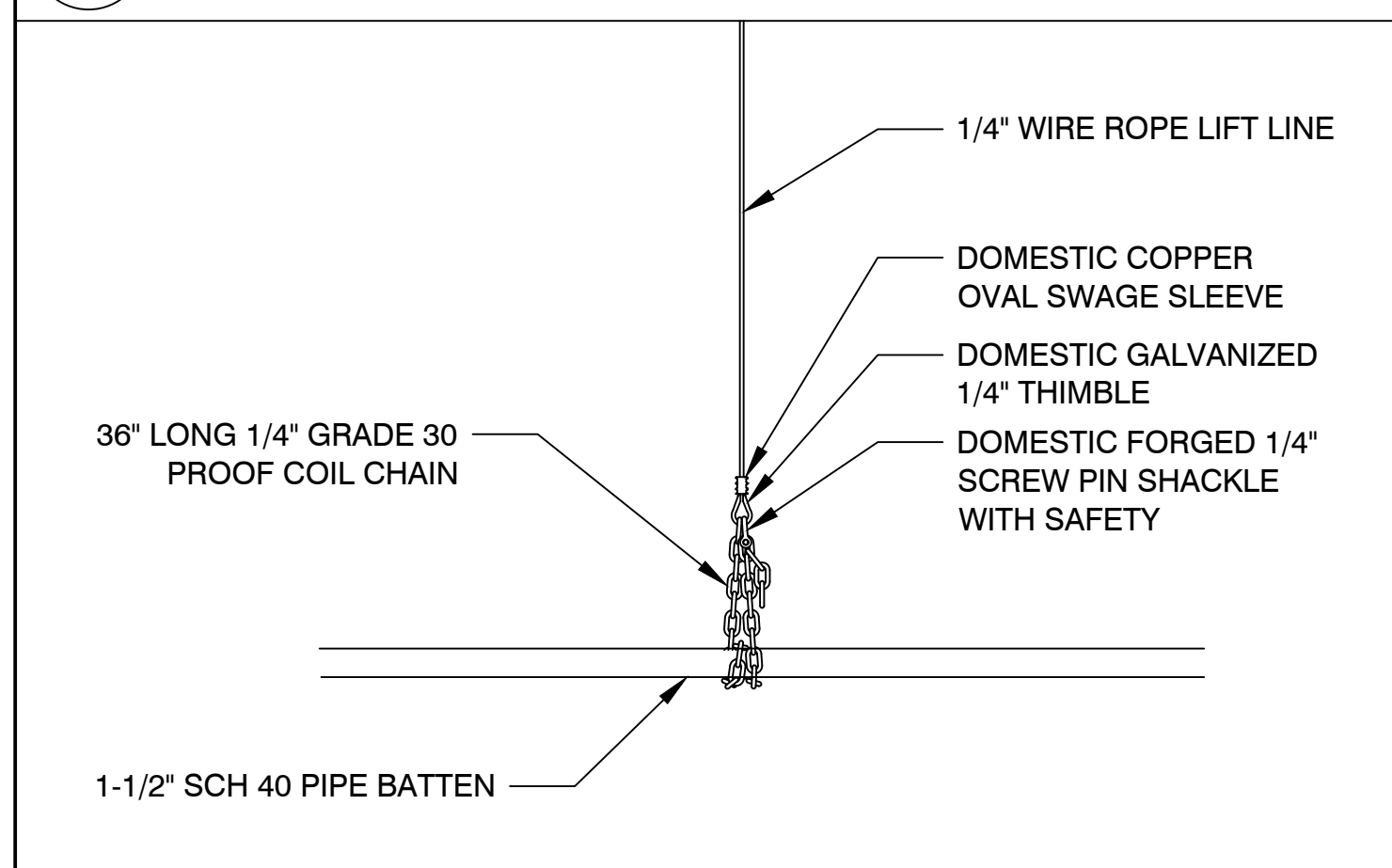
SHEET NUMBER
XT-102



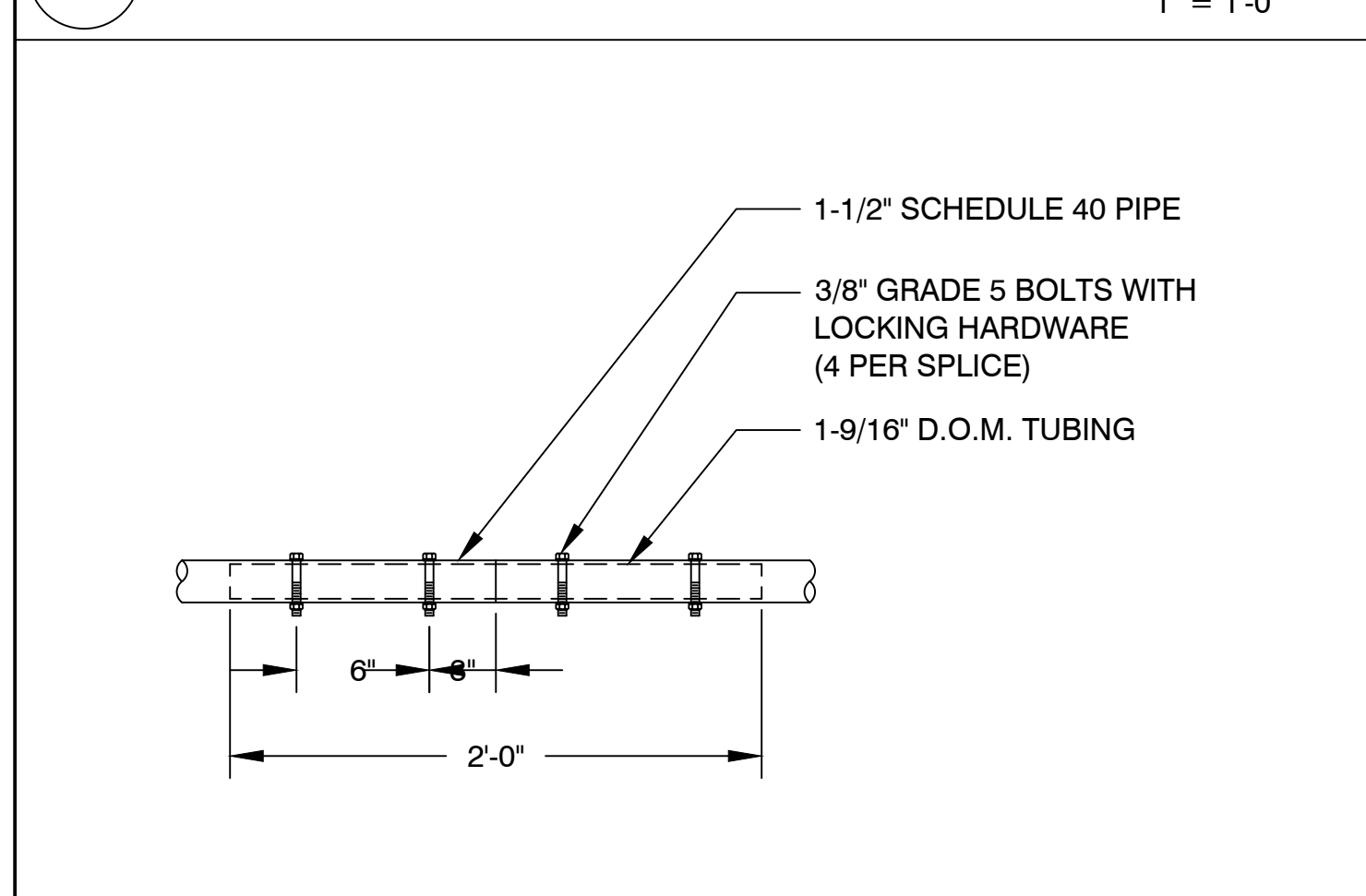
6 PROJECTION SCREEN ATTACHMENT DETAIL 3" = 1'-0"



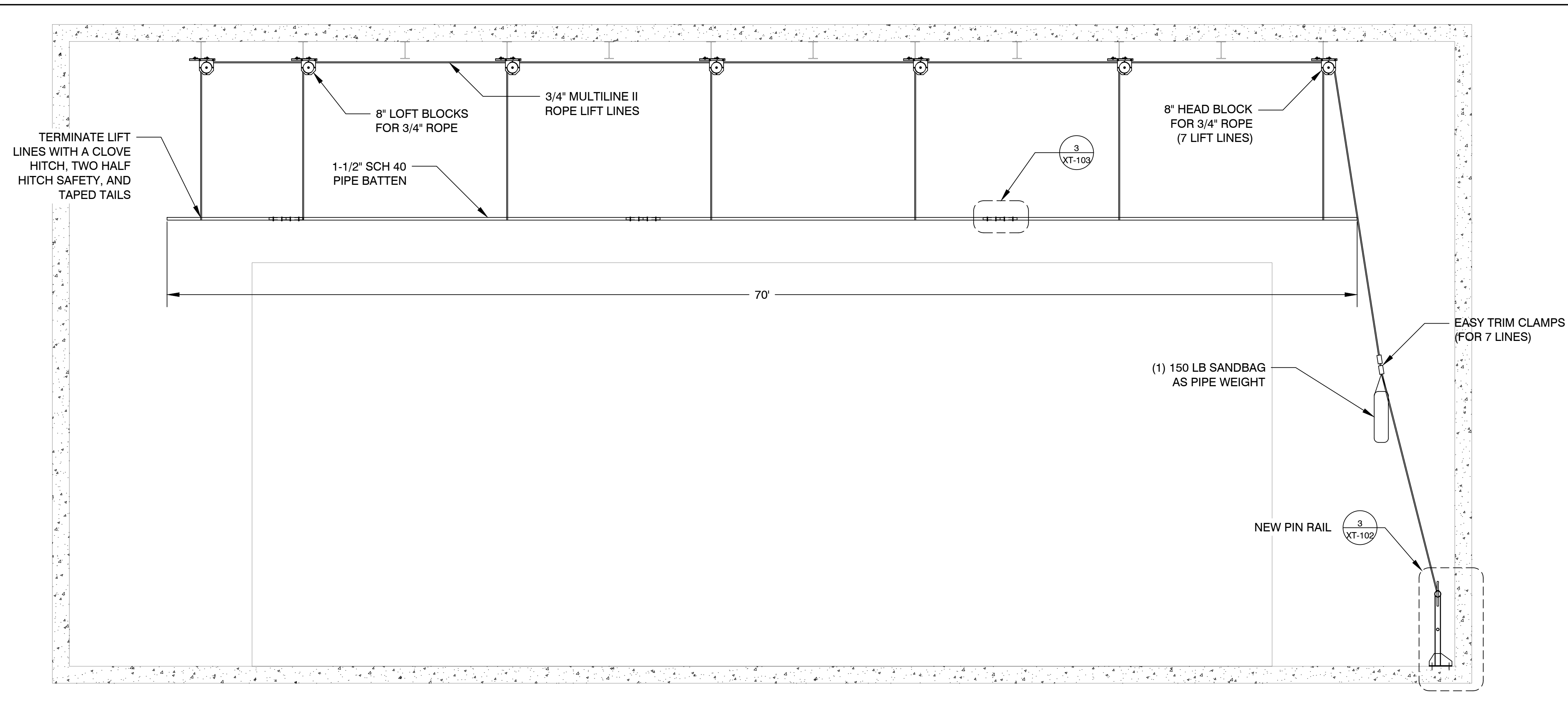
5 BATTEN BEAM CONNECTION ASSEMBLY 1" = 1'-0"



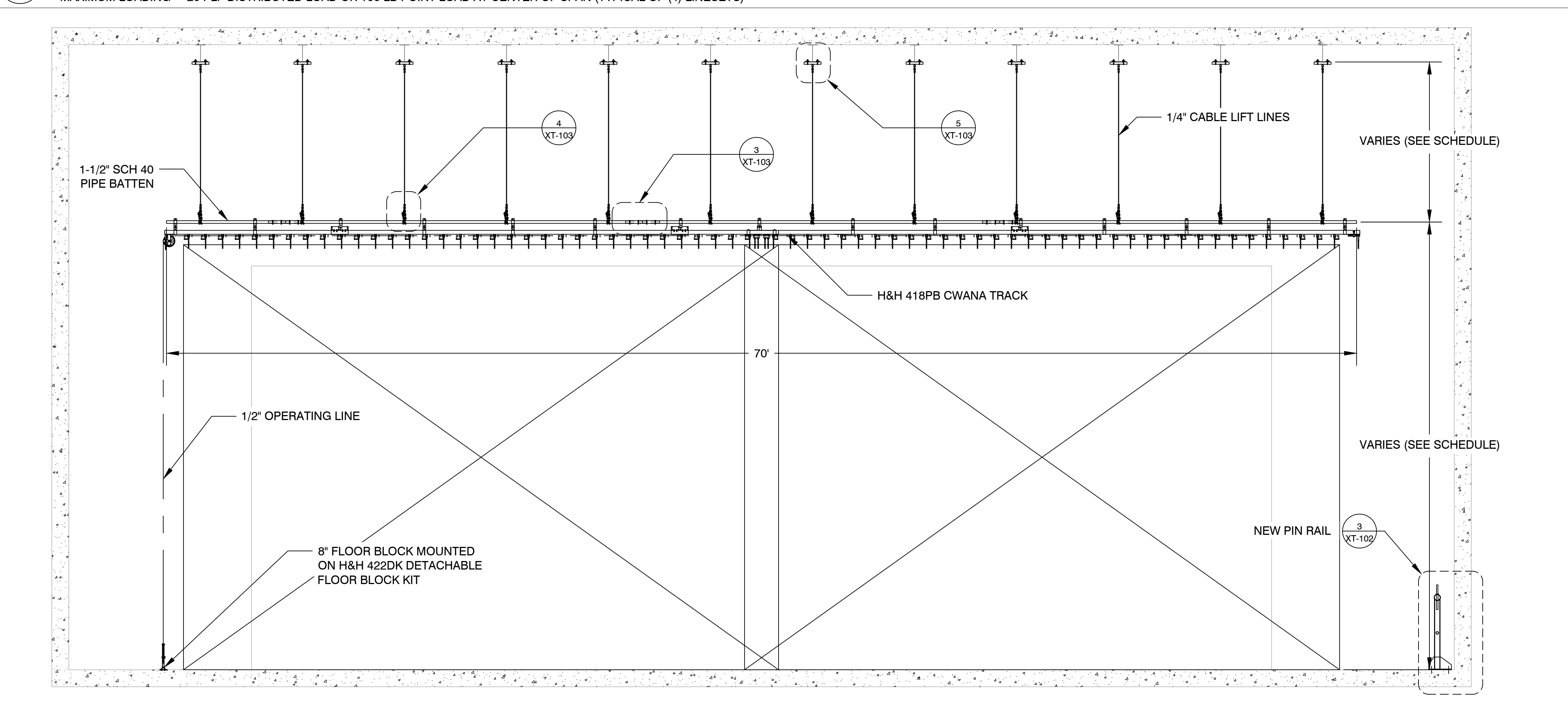
4 BATTEN TRIM CHAIN ASSEMBLY 1" = 1'-0"



3 BATTEN SPLICE 1-1/2" = 1'-0"



2 MANUAL LINESSET ELEVATION MAXIMUM LOADING = 20 PLF DISTRIBUTED LOAD OR 100 LB POINT LOAD AT CENTER OF SPAN (TYPICAL OF (4) LINESETS) 1/4" = 1'-0"



1 DEADHEADING LINESSET ELEVATION TYPICAL OF (9) LINESETS 1/4" = 1'-0"

nextstage design
 900 Chapel Street
 10th Floor
 New Haven CT 06510
 203 936 6565
 nextstage-online.com

PROJECT NAME
Lyman Center - Stage Rigging and Draperies
 Southern Connecticut State University
 501 Crescent Street
 New Haven, CT 06515

PROJECT NUMBER
 SCSU-2019-07

ISSUE	DATE
BID DOCUMENTS	10/30/19

SHEET TITLE
THEATER EQUIPMENT ELEVATIONS & DETAILS
 SHEET NUMBER