

**ADDENDUM #2**



**New Pavilion**  
**Juliette Low Park**

Sedgewick Ave. & Woodend Rd.,  
Stratford, CT.

TOWN PROJECT NUMBER: 2020-015

ISSUED: 10/25/2019

**PROJECT TEAM**

**Architect / Project Manager**

**SNYDER**  
**ARCHITECTS, LLC**

Architecture . Planning . Construction Management

Trumbull, CT 203-243-3346  
info@snyderarchitects.com

**Civil Engineer**

**AM ENGINEERING**  
*One of the Tilton Companies*



**Structural Engineer**



959 Main Street Stratford, CT

The work shall be carried out in accordance with the following supplemental instructions and in accordance with the Contract Documents.

**CLARIFICATION**

1. Lockable hose bib valve shall be the Woodford Freezeless Yard Hydrant Model W34 or approved equal. See attached cutsheet.

**\*\*\* END OF ADDENDUM #2 \*\*\***



# Freezeless Yard Hydrant Model W34

W34 hydrants are intended for irrigation purposes and used for filling field spray equipment, cleaning tools and equipment, lawn and garden care, watering livestock, fire protection - immediate water flow even in sub-zero temperatures.

## Features:

**One Piece Variable Flow Plunger** - Large cushion type seal for longer life - is not easily damaged and assures shut-off even when foreign particles are present.

**Maintenance & Repair** - All repairs can be made from top of unit without removing hydrant from the ground.

**Tamper Proof Lock** - Can be locked in closed position by inserting padlock or bolt through hole in link.

**Long Life Packing** - Graphite packing for lubricity and long life.

**Long Life Valve Seat** - Special shape - large contact area - eliminates need for renewable nylon seat.

## Specifications:

**Female Inlet:** 3/4" NPT

**Casing:** 1" Galvanized Steel Pipe

**Operating Rod:** 3/8" Galvanized Steel Pipe

**Drain Hole:** Tapped - 1/8" N.P.T.

**Removable Nozzle:** 3/4" Brass Male Hose Nozzle

**Optional:** At additional cost

1" brass pipe outer casing

3/8" brass pipe operating rod

1" hose nozzle (10007)

**Maximum Working Pressure:** 125 p.s.i.

**Maximum Temperature:** 120° F

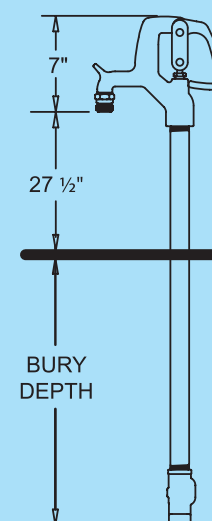
## SHIPPING WEIGHT

Bury Depth (Ft)	1	2	3	4	5	6	7*
Weight (Lbs)	14	16	18	20	22	24	26

\*Must ship by truck line due to length.

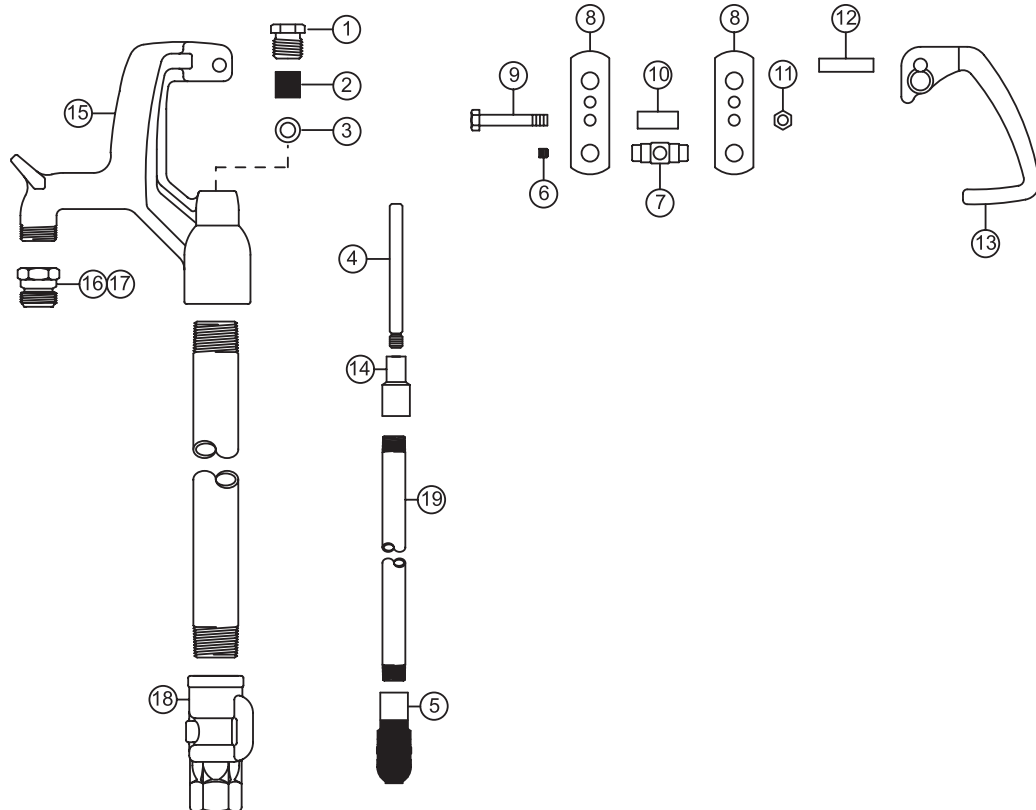


## Rough-In Dimensions



**For Installation / Troubleshooting Instructions go to  
[www.woodfordmfg.com](http://www.woodfordmfg.com) or call 1-800-621-6032**

**When ordering, specify model and bury depth.**

**WOODFORD**

### MODEL W34 PARTS LIST

ITEM	PART#	DESCRIPTION
	15039	Head Assembly - Complete (Includes Items 1-4, 6-16)
1	10100	Packing Nut
2	10101	Packing
3	10102	Packing Support Washer
4	10104	Brass Rod Stem
5	10105	Plunger
6	10158	Pivot Set Screw
7	10159	Pivot
	15050	Pivot Assembly (Includes Items 6 & 7)
8	10144	Steel Link (2 Req'd)
9	10157	Link Bolt
10	10146	Link Spacer
11	10206	Link Bolt Nut
12	10142	Handle Pin
13	10211	Handle
14	10011	Reducing Coupling
15	15040	Head & Nozzle Assembly (Includes Item 16)
16	10004	3/4" Brass Hose Nozzle (Standard)
17	10007	1' Brass Hose Nozzle (Optional)
18	10018	Valve Body

ITEM	PART#	DESCRIPTION
19	W34 - 3/8"	Operating Pipe (Bury Depth & Length)
	10023	1' Bury (35 1/2" Long)
	10024	2' Bury (47 1/2" Long)
	10025	3' Bury (59 1/2" Long)
	10026	4' Bury (71 1/2" Long)
	10027	5' Bury (83 1/2" Long)
	10028	6' Bury (95 1/2" Long)
	10029	7' Bury (107 1/2" Long)
	RK-W34	Repair Kit (Includes Items 1-7)
	RK-WXL	Steel Link Repair Kit (Includes Items 8 - 11)

**Woodford**  
*Excellence*  
 Since 1929  
 Proudly Made In The U.S.A.

For more information contact...

## WOODFORD MANUFACTURING COMPANY

2121 Waynoka Road, Colorado Springs, Colorado 80915 • Phone: (800) 621-6032 • Fax: (800) 765-4115

To view our complete product line visit: [www.woodfordmfg.com](http://www.woodfordmfg.com) or email: [sales@woodfordmfg.com](mailto:sales@woodfordmfg.com)

A Division Of WCM Industries, Inc.

# INSTALLATION INSTRUCTIONS



For more information contact...

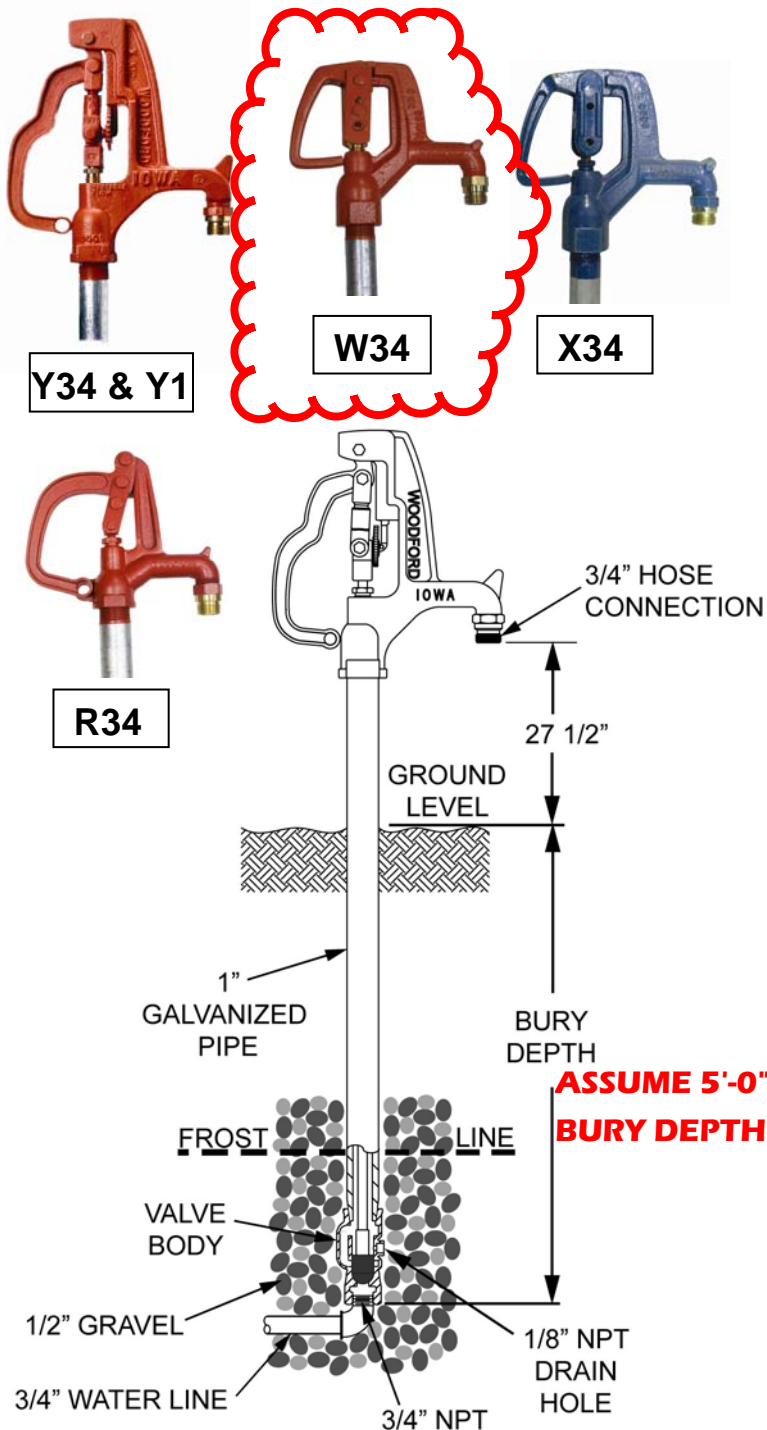
## **WOODFORD MANUFACTURING COMPANY**

2121 Waynoka Road, Colorado Springs, Colorado 80915 • Phone: (800) 621-6032 • Fax: (800) 765-4115

To view our complete product line visit: [www.woodfordmfg.com](http://www.woodfordmfg.com) or email: [sales@woodfordmfg.com](mailto:sales@woodfordmfg.com)

A Division of WCM Industries, Inc.

Rev 05/10 Form No. IYH.102



*These instructions do not apply to Sanitary Hydrants or Utility Hydrants.*

1. Dig hole for hydrant approximately 2 feet in diameter and deeper than the bury depth.
2. Flush gravel, debris, etc. out of the supply line before connecting hydrant.
3. Install hydrant with drain hole below frost line. Use wrenches on supply line fitting and brass valve body only. This avoids over tightening the hydrant assembly which could affect operation.
4. If supply line to the hydrant will not support hydrant, use re-bar, length of pipe or other suitable support driven in bottom of pit to help support hydrant. Before filling excavation, turn on water and check hydrant connection for leaks.
5. Provisions must be made to allow the water to drain from the hydrant drain hole each time the hydrant is closed.
  - a) Fill bottom of pit with 1/2" gravel to a minimum of 3" above brass drain valve body, to insure adequate drainage.
  - b) If the hydrant is installed inside a structure or concrete driveway, connect copper drain tubing to the 1/8" NPT drain hole and dig a remote drain field outside the structure for the drain pipe to empty into. Without this remote piping drain field, the water from the hydrant drainage may percolate up to the surface around or near the hydrant and will damage the floor surface or cause muddy areas around hydrant.
  - c) Saturated ground in the hydrant drain field can prevent the hydrant from fully draining and may result in freezing. If the area where the hydrant is located is low lying or has a tendency to have standing water, a larger drain field or pit may be required to provide the hydrant a place to drain.