



HOUSING AUTHORITY OF THE CITY OF BRIDGEPORT,
D/B/A PARK CITY COMMUNITIES
150 HIGHLAND AVENUE
BRIDGEPORT, CT 06604

ADDENDUM # 1 – October 3, 2019

TRUMBULL GARDENS CHILDREN SPLASH PAD

Solicitation Number: 132-PD-19-S
Solicitation Date: September 16, 2019

1. Revised Bid sheet (attached), Note changes below:

Revised line item breakdown.

Provide pricing for Labor Only \$ _____
Labor and Material \$ _____

2. Spec for Backflow Preventor (See Attached)

3. Questions asked via e-mail bids@parkcitycommunities.org:

Q1. What is the make and model # for the back-flow preventer?

A1. Please spec Backflow Preventer

Q2. On page 67&68 in the spec book it says the Park City Communities will supply the splash pad equipment, please verify.

A2. Bidders will be asked to provide labor to install only, and Labor and materials installed. (Turnkey)

Q3. Site access will be left up to the contractor provided all safety precautions are taken for day care safety, will tree trimming be allowed for truck access?

A3. Yes, tree trimming will be allowed by a certified arborist

Q4. Will there be a separate water meter for the splash pad and if so, PCC will need to make arrangements with Aquarian Water.

A4. Separate water meter

Q5. Where is the location of the manifold, is it above ground or below ground?

A5. The manifold is the smart Point No.1 with foot activator. No additional manifold is needed.

Q6. If work does not start before Thanksgiving would it be safe to say it should start in late March, early April?

A6. Yes

END OF ADDENDUM #1

Please sign this addendum and acknowledge receipt on the acknowledgement of addenda form to be returned with your proposal.

Signature:
(Authorized Signature)

Typed Name and Title

Name of Firm

Date

Date Issued: October 3, 2019

Any errors made by the Submitter calculating the BASE BID AMOUNT may be cause for rejection of the BID.

The quote prices shall be included as provided for in the attached IFQ. Unless otherwise specified in the BID all prices shall be on a firm-fixed-price basis and are not subject to adjustment based on costs incurred.

Unless indicated otherwise, Submitter must submit a lump sum firm-fixed price proposal consistent with the cost/price analysis prepared by PCC. Price proposals that are inconsistent with the PCC cost/price analysis may be deemed non-responsive. The price proposal must be submitted in a separately sealed envelope clearly marked: Price Proposal.

PCC will award a contract to the lowest responsive and responsible Submitter on the basis of the BASE BID AMOUNT, provided however, in accordance with paragraph E (8) of the PCC Section 3 WBE/MBE Plan preference may used in an award of an PCC contract that is awarded under a sealed bid process as follows: Bids shall be solicited from all businesses (Section 3 Business Concerns, and non Section 3 Business Concerns) and an award shall be made to the qualified Section 3 Business Concern with the highest priority ranking and with the lowest responsive bid:

- a. Bids shall be solicited from all businesses (i.e. Section 3 Business Concerns, Resident Owned Business Concerns and Minority contractors and non-Section 3 Business Concerns, non- Resident Owned Business Concerns and non-Minority contractors). An award shall be made to the qualified Section 3 Business Concern with the highest priority ranking (as defined in 24 CFR Part 135) and with the lowest responsive bid if that bid: a. is within the maximum total contract price established in PCC's budget for the specific project for which bids are being taken; and b. is not more than "X" higher than the total bid price of the lowest responsive bid from any responsible bidder. "X" is determined as follows:

X = lesser of:

When the lowest responsive bid is less than \$100,000 10% of that bid or \$9,000

When the lowest responsive bid is:

At least \$100,000, but less than \$200,000.....9% of that bid or \$16,000

At least \$200,000, but less than \$300,000.....8% of that bid or \$21,000

At least \$300,000, but less than \$400,000.....7% of that bid or \$24,000

At least \$400,000, but less than \$500,000.....6% of that bid or \$25,000

At least \$500,000, but less than \$1 million.....5% of that bid or \$40,000

- b. If no responsive bid by a Section 3 Business Concern meets the requirements of paragraph a. above, the contract shall be awarded to a Minority Contractor if a contractor meets the requirements of paragraph a. above. Responsible bidder with the lowest responsive bid. In the event a Minority Owned Business Concern and A Women Owned Business Concern both meet the requirements of paragraph .a. above and submit the same bid then the award would go to the MBE then the WBE in rotating order.

Notwithstanding anything contained in this paragraph 8 to the contrary, if the bid or proposal requests quotes for base work and quotes for alternate additions or deductions, all bids must be analyzed on a fair equitable basis without manipulation of the base bid and the alternate bids in such a way that makes the calculation of the low bid suspect or questionable in violation of the principles of this plan.

2. In submitting this quote, it is understood that the right is reserved by the Housing Authority of the City of Bridgeport to reject any and all Bids and to waive any informalities in the bids. If written notice of the acceptance of this quote is mailed, telegraphed, or delivered to the undersigned within ONE HUNDRED AND TWENTY (120) calendar days after the opening thereof, or at any time thereafter before this quote is withdrawn, then the undersigned agrees to execute and deliver a contract in the prescribed form and furnish the required bond within ten (10) days after the contract is presented to him/her for signature.

3. Security in the sum of:

_____ DOLLARS (\$ _____)
(Written Amount) (Numerical Amount)
in the form of: _____ is submitted herewith in accordance with
the Specifications.

4. Submitter offers the following discount for prompt payment of invoices by PCC:

_____% , _____(Days)

5. The submitter represents that he/she _____ has _____ has not participated in a previous contract or subcontract subject to the equal opportunity clause prescribed by Executive Order 10925, 11114, or 11246 or the Secretary of Labor; that he/she _____ has _____ has not filed all required compliance reports; and that representations indicating submission of required compliance reports, signed by proposed subcontractors, will be obtained prior to sub-contract awards. (The above representation need not be submitted in connection with contracts or subcontracts which are exempt from the clause.)

6. Certification of Non-Segregated Facilities.

By signing this quote, the submitter certifies that he/she does not maintain or provide for his/her employees and segregated facilities at any of his/her establishments, and that he/she does not permit his/her employees to perform their services at any location, under his/her control, where segregated facilities are maintained. He/she certifies further that he/she will not maintain or provide for his/her employees any segregated facilities at any of his/her establishments, and that he/she will not permit his/her employees to perform their services at any location under his/her control, where segregated facilities are maintained. The submitter agrees that a breach of this certification is a violation of the Equal Opportunity clause of this contract. As used in this certification, the term "segregated facilities" means any waiting rooms, work areas, rest rooms and wash rooms, restaurants and other eating areas, time clocks, locker rooms and other storage or dressing areas, parking lots, drinking fountains, recreation or entertainment areas, transportation and housing facilities provided for employees which are segregated by explicit directive or are in fact segregated on the basis of race, color, religion, or national origin, because of habit, local custom or otherwise. He/she further agrees that (except where he/she has obtained identical certifications from proposed subcontractors for specific time periods), he/she will obtain identical certifications form proposed subcontractors prior to the award of subcontracts exceeding \$10,000 which are not exempt from the provisions of the Equal Opportunity clause; that he/she will retain such certification in his/her files; and that he/she will forward a notice of his/her proposed subcontractors as provided in the instructions to bidders.

7. Unit Prices

The undersigned proposes and agrees that should the contract be adjusted by a request of the Housing Authority, through the Architect or Engineer, the following supplemental unit prices will be the basic price in place for computing extra cost or credit. Each unit price shall represent a dollar value for the work furnished

and installed complete including all overhead and profit. Each unit price shall include all equipment, tools, labor, permits, fees etc. incidental to the completion of work.

SEE FOLLOWING BID FORM

8. In submitting this quote, the submitter certifies that his/her firm and all subcontractors are not currently on the HUD or GSA list of debarred, suspended or ineligible companies or the GSA Consolidated List of Debarred, Suspended or Ineligible Contractors.

9. Liquidated Damages

As actual damages for any delay in completion are impossible to determine, the contractor and his surety shall be liable for and shall pay to the Housing Authority of the City of Bridgeport the sum hereinafter stipulated as fixed and agreed liquidated damages for each day of delay until the work is completed and accepted.

\$200 per calendar day

Refer to HUD General Conditions, Paragraph 33, Liquidated Damages

10. Prevailing Wages

Davis-Bacon and prevailing wage rates will be paid to all workers. Wage rate interviews will be conducted at random during the construction period.

NOTE:

The penalty for making false statements in offers is prescribed in 18 u.a.c. 1001.

Date: _____, 20____

By: _____

(Signature required)

Official Address:

Job Name _____
 Job Location _____
 Engineer _____
 Approval _____

Contractor _____
 Approval _____
 Contractor's P.O. No. _____
 Representative _____

Series LF909

Reduced Pressure Zone Assemblies

LF909 Sizes: 3/4", 1" (20, 25mm)

LF909M1 Sizes: 1 1/4", 1 1/2", 2" (32, 40, 50mm)

Series LF909 Reduced Pressure Zone Assemblies are designed to provide superior cross-connection control protection of the potable water supply in accordance with national plumbing codes and containment control for water authority requirements. This series can be utilized in a variety of installations, including health hazard cross-connections in plumbing systems or for containment at the service line entrance. The LF909 features Lead Free* construction to comply with Lead Free* installation requirements. With its exclusive, design incorporating the "air-in/water-out" principle it provides maximum relief valve discharge during the emergency conditions of combined backsiphonage and backpressure with both checks fouled. Model LF909OT, standardly furnished with full port, resilient seated and Lead Free* cast copper silicon alloy ball valve shutoffs. Sizes 3/4" and 1" (20 and 25mm) shutoffs have tee handles.

Features

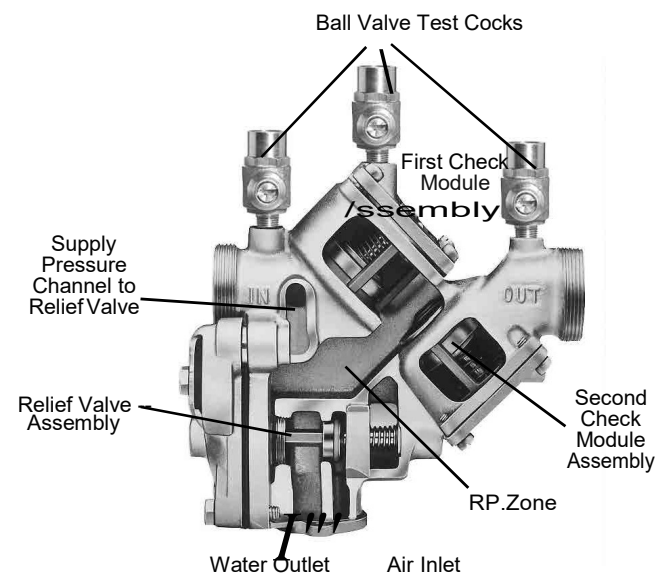
- Modular design
- Replaceable seats
- Compact for installation ease
- Horizontal or vertical (up or down) installation on limited sizes only
- No special tools required for servicing

Specifications

A Reduced Pressure Zone Assembly shall be installed at each cross-connection to prevent backsiphonage and backpressure of hazardous materials into the potable water supply. The assembly shall consist of a pressure differential relief valve located in a zone between two positive seating check valves. Backsiphonage protection shall include provision to admit air directly into the reduced pressure zone via a separate channel from the water discharge channel, or directly into the supply pipe via a separate vent. The assembly shall be constructed using Lead Free* cast copper silicon materials. The Lead Free* reduced pressure zone assembly shall comply with state codes and standards, where applicable, requiring reduced lead content. The assembly shall include two tightly closing shutoff valves before and after the assembly, test cocks and a protective strainer upstream of the No. 1 shutoff valve. The assembly (specify Model LF909 for temperatures up to 140°F (60°C) or Model LF909HW for temperatures up to 210°F (99°C)) shall meet the requirements of ASSE Std. 1013; AWWA Std. C-511-92 CSA B64.4; FCCCHR of USC Manual Section 10. Listed by IAPMO (UPC). SBCCI (Standard Plumbing code). The assembly shall be a Watts LF909OTS or LF909OTSHW.



Model LF909M1QT-S
1 1/2" (40mm)



Now Available
WattsBox Insulated Enclosures.
 For more information, send for literature ES-WB.

The information contained herein is not intended to replace the full product installation and safety information available or the experience of a trained product installer. You are required to thoroughly read all installation instructions and product safety information before beginning the installation of this product.

*The wetted surface of this product contacted by consumable water contains less than 0.25% of lead by weight.



Models

Suffix

OT	Quarter-turn ball valves
S	Bronze strainer
HW	Stainless steel check modules for hot and harsh water conditions

The installation of a drain line is recommended. When installing a drain line, an air gap is necessary.

Materials

Body: Lead Free* Cast Copper Silicon Alloy

Check Seats: 909 Celcon®

Relief Valve Seats: Stainless Steel 909HW

Test Cocks: Lead Free* Cast Copper Silicon Alloy

Celcon® is a registered trademark of Celanese, Limited

Connections

¾" - 1" (19 - 25mm) 909-NPT Female threaded body connection

1¼" - 2" (32 - 50mm) 909-M1 -NPT Male threaded body connection

Standards

AWWA C-511-92

FCCCHR of USC Manual Section 10

IAPMO (UPC), SBCCI (Standard Plumbing code)

Tested and Certified by NSF International

Approvals

Listed by IAPMO

Listed by SBCCI



Approved by the Foundation for Cross-Connection Control and Hydraulic Research at the University of Southern California. (OT and S Models)

Vertical "flow-up" approval only on ¾" (20mm) and 1" (25mm) sizes (model LF909OT).

Pressure - Temperature

Temperature Range : 33°F - 140°F (0.5 °C - 60°C) continuous, 180°F (82°C) intermittent

Maximum Working Pressure: 175psi (12.1 bar)

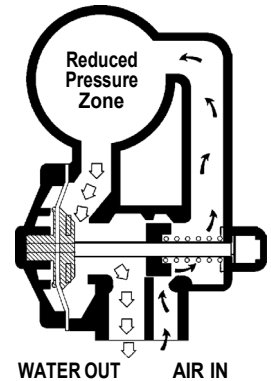
Series LF909HW:

Temperature Range: 33°F - 210°F (0.5 °C - 99°C)

Maximum Working Pressure: 175psi (12.1 bar)

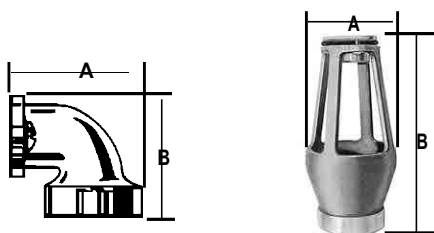
How it Operates

The unique relief valve construction incorporates two channels: one for air, one for water. When the relief valve opens, as in the accompanying air-in/water-out diagram, the right-hand channel admits air to the top of the reduced pressure zone, relieving the zone vacuum. The channel on the left then drains the zone to atmosphere. Therefore, if both check valves foul, and simultaneous negative supply and positive backpressure develop, the relief valve uses the air-in/water-out principle to stop potential backflow.



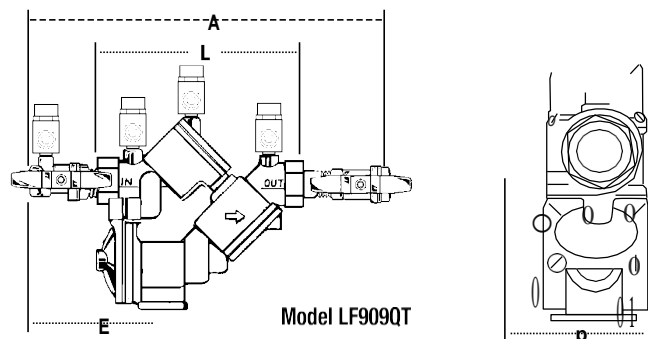
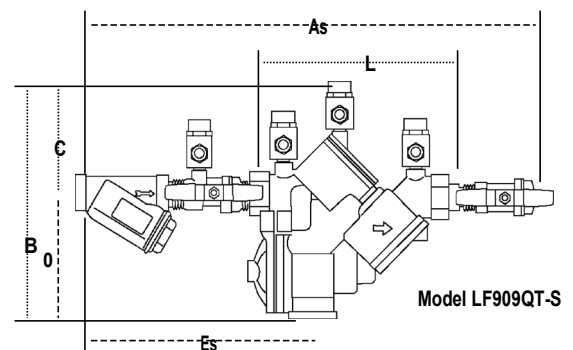
Dimensions - Weights

When installing a drain line use 909AG series Air Gaps on Series 909 backflow preventers. 909EL series elbows are for air gaps on backflow preventers in vertical installations.



Series 909AG Air Gaps

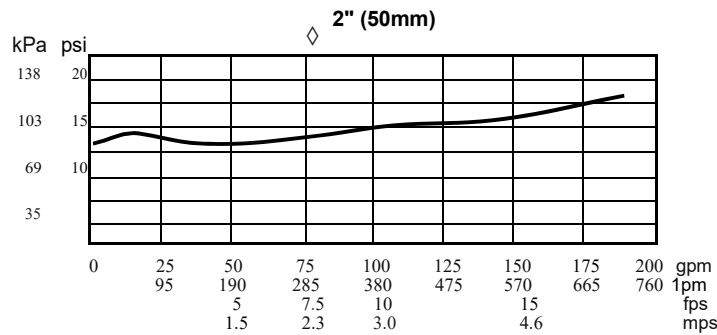
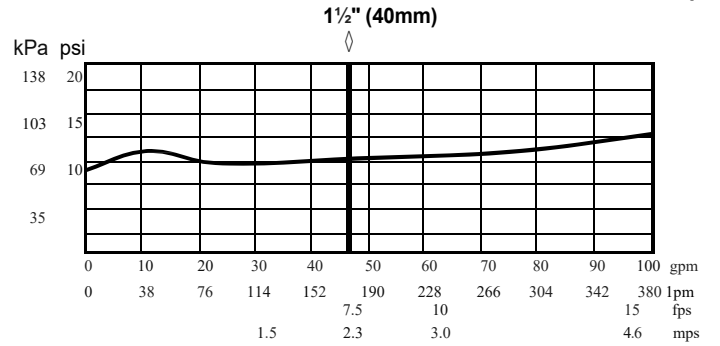
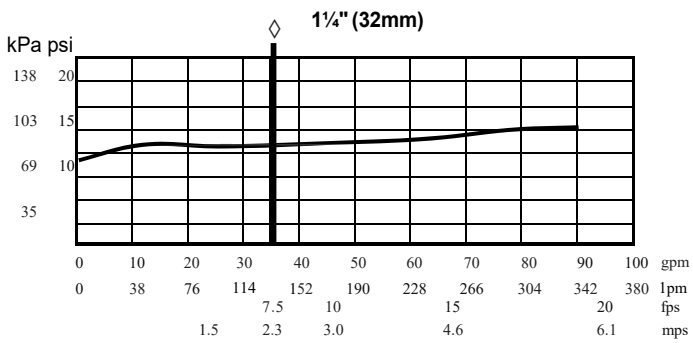
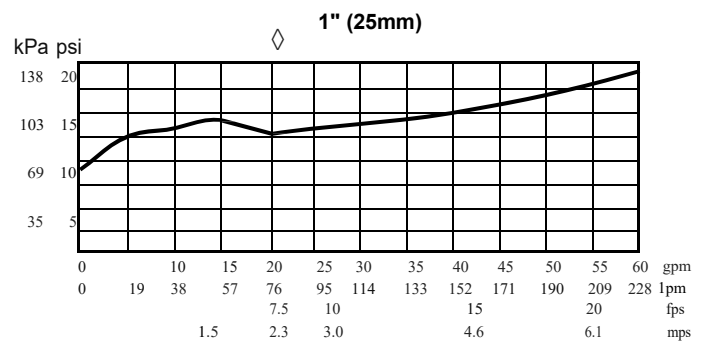
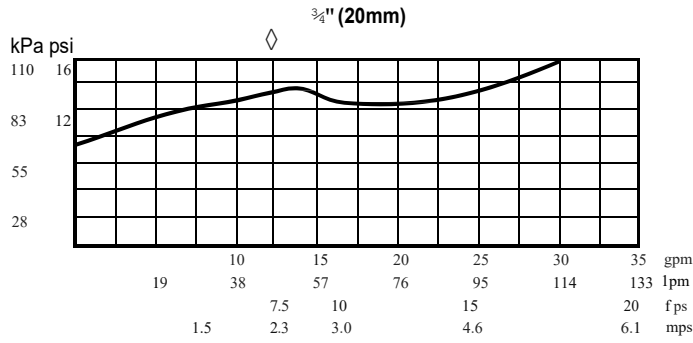
Iron Body No.	Desc.	Sizes		A		B		lbs.	kg.
		in.	mm	in.	mm	in.	mm		
909AG-C	Air Gap	¾, 1	19, 25	-	25	¾, 1	83, 124	1½	.7
909EL-C	Elbow	¾, 1	19, 25	-	-	2½	60, 60	½	.2
909AG-F	Air Gap	1¼-2	32-50	2	50	4½	111, 171	3¼	1.5
909EL-F	Elbow	1¼-2	32-50	-	-	3½	92, 92	2	.9



Capacity

As compiled from documented Foundation for Cross-Connection Control and Hydraulic Research of the University of Southern California lab tests.

◇ Typical maximum system flow rate (7.5 feet/sec.)



LF909QT, LF909QT-S

	A		As		B		C		D		E		Es		L		P		Q		QT-S	
	in.	mm	in.	mm	in.	mm	in.	mm	in.	mm	in.	mm	in.	mm	in.	mm	in.	mm	lbs.	kgs.	lbs.	kgs.
3/4" I	14 1/2	365	18 1/2	459	8 3/4	222	4	102	4 3/4	121	6 3/4	171	10 1/2	269	7 1/2	186	3 1/2	98	14	6.4	15.6	7.1
1" I	15 1/2	391	19 1/2	498	8 3/4	222	4	102	4 3/4	121	7	178	11	279	7 3/4	186	3 1/2	98	15	6.8	17.5	7.9
1 1/4" M1	18 1/2	470	23 1/2	595	11 1/2	295	5 1/2	140	6 1/2	165	7 1/2	191	12 1/2	310	10 1/2	264	5 1/4	133	40	18.1	42.8	19.4
1 1/2" M1	19	483	24 1/2	619	11 1/2	295	5 1/2	140	6 1/2	165	7 1/2	191	12 1/2	321	10 1/2	264	5 1/4	133	40	18.1	44.0	20.0
2" M1	19 1/2	495	25 1/2	659	11 1/2	295	5 1/2	140	6 1/2	165	7 3/4	197	13 1/2	354	10 1/2	264	5 1/4	133	40	18.1	47.4	21.5

Subscript 'S' = strainer model



USA: T: (978) 689-6066 • F: (978) 975-8350 • Watts.com
24090 • F: (905) 332-7068 • Watts.ca
Canada: T: (905) 332-7068 • 1-800-1-8600 • Watts.com
Latin America: T: (5