

ADDENDUM NO. 3
TOWN OF PLAINVILLE
WATER POLLUTION CONTROL FACILITY
PLAINVILLE, CONNECTICUT 06062

BID NUMBER: **2020-02**

ISSUED: **September 4, 2019**

LOCATION OF BID OPENING: **Plainville Town Hall Council Chambers**

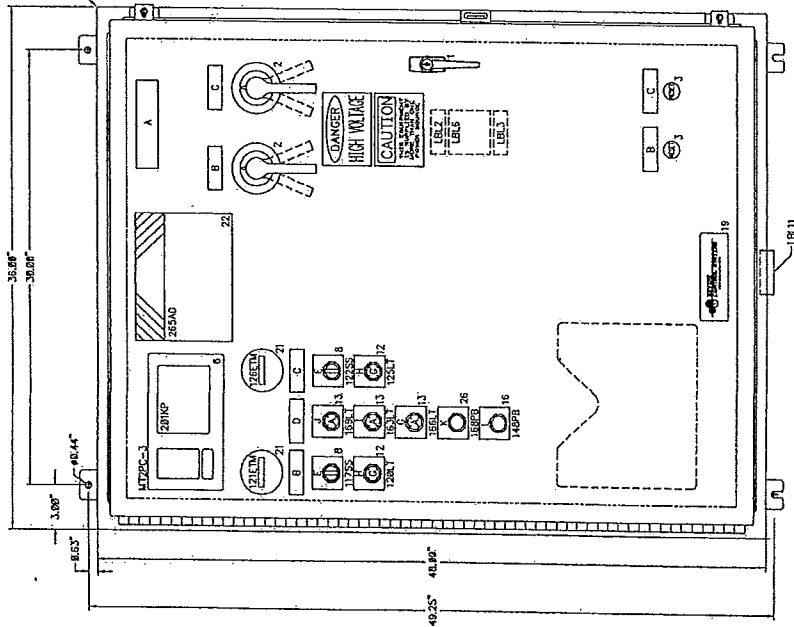
PRE-BID CONFERENCE: **N/A**

SUMMARY DESCRIPTION OF BID: **WPCF Plant & Pump Station Fiber Connection
Installation**

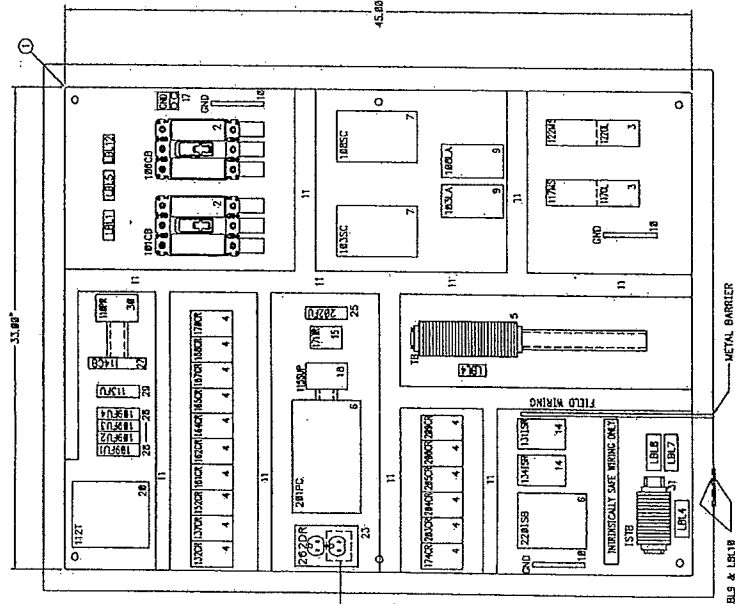
Addendum No. 3 – Pump Station Control Panel Schematics

This addendum contains the Cooke Street Pump Station Control Panel, Mountain View Pump Station Control Panel, and the Norton Park Pump Station Control Panel.

Please note that there are no current schematics for the Shuttle Meadow Pump Station.

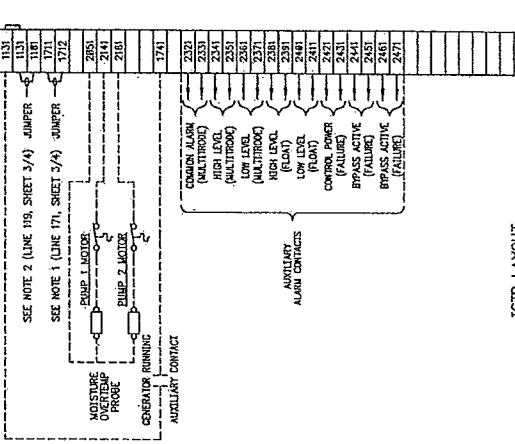


FRONT VIEW
(0° VIEW)

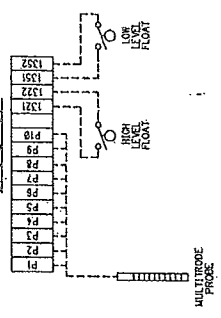


SUBPANEL LAYOUT

NOTE 1: REMOVE JUMPER IF BYPASS IS NOT REQUIRED.
NOTE 2: INSTALL JUMPER IF LOW LEVEL FLOAT SHUT DOWN IS NOT REQUIRED.



IB1 LAYOUT



ISTB LAYOUT

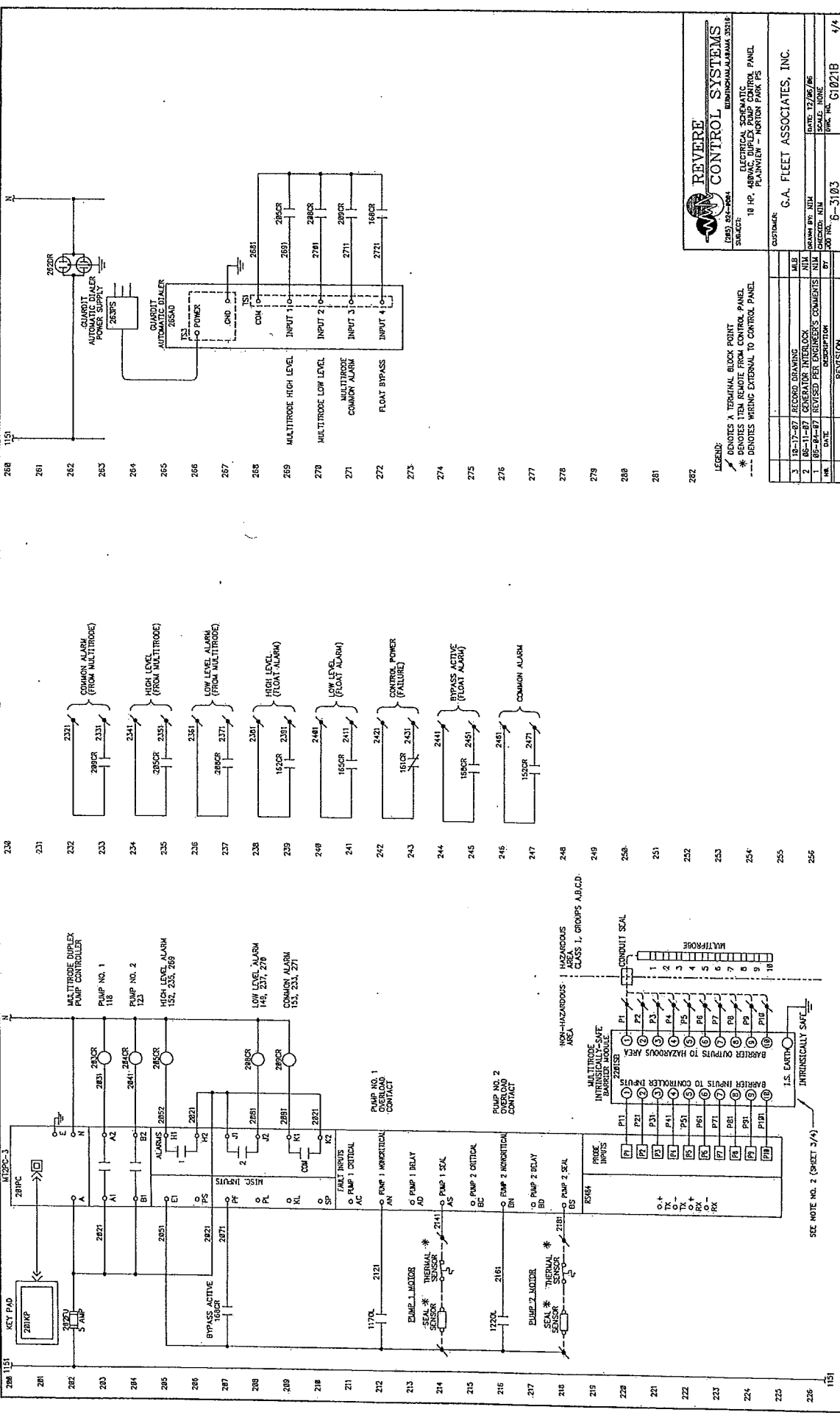
REVERE CONTROL SYSTEMS
BIRMINGHAM, ALABAMA 35219

PROJECT: 19 1/2" 48VAC DUPLEX PUMP CONTROL PANEL
PLANT/WORK - NORTON PARK PS

CUSTOMER: G.A. FLEET ASSOCIATES, INC.

DATE: 12/08/05
SCALE: 1/4" = 1"
SHEET NO: 5-3103
REV: C1021B

NO.	DATE	DESCRIPTION	BY	REVISION
3	10-17-07	RECORD DRAWING	KLB	
2	06-11-07	GENERATOR INTERLOCK	KLB	
1	05-04-07	REVISED PER ENGINEER'S COMMENTS	KLB	



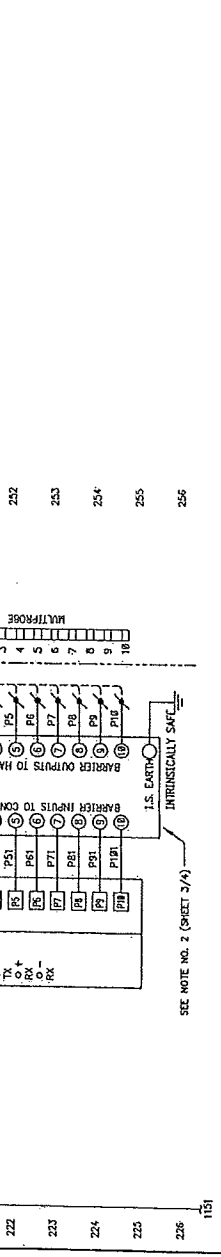
280 1151
281
282
283
284
285
286
287
288
289
290
291
292
293
294
295
296
297
298
299
300
301
302
303
304
305
306
307
308
309
310
311
312
313
314
315
316
317
318
319
320
321
322
323
324
325
326
327
328
329
330
331
332
333
334
335
336
337
338
339
340
341
342
343
344
345
346
347
348
349
350
351
352
353
354
355
356

REVERE CONTROL SYSTEMS
ELECTRICAL SCHEMATIC
18 HP. AIRVAC. DUPLEX PUMP CONTROL PANEL
PLAINFIELD - MONTICELLO PARK NJ

DATE: 12/06/86
SCALE: NONE
DRAWN BY: NIM
CHECKED: NIM
JOB NO.: 6-3103
SHEET NO.: 1/4

LEGEND:
 / DENOTES A TERMINAL BLOCK POINT
 * DENOTES ITEM REMOTE FROM CONTROL PANEL
 --- DENOTES WIRING EXTERNAL TO CONTROL PANEL

NO.	DATE	DESCRIPTION
1	08-17-87	REVISION DRAWING
2	08-17-87	REVISION INTERLOCK
3	08-04-87	REVISION PRE ENGINEER'S COMMENTS
4	08-04-87	REVISION



SEE NOTE NO. 2 (SHEET 3/4)

F. J. Smith Equipment Company

41 Commerce Way, South Windsor, Connecticut 06074
1-860-528-6623 FAX 1-860-528-8057

SUBMITTAL

PUMP CONTROL PANEL

at

“ MOUNTAIN VIEW ”
SEWAGE PUMP STATION

for

Water Pollution Control Authority
Town of Plainville, Connecticut

ENGINEER

LOUREIRO ENGINEERING ASSOCIATES,

100 Northwest Drive
Plainville, Connecticut 06062

PREPARED FOR

Albert Philopena, Inc
181 Cross Road PO Box 202
Waterford, Connecticut 06385

SHOP DRAWING REVIEW	
REVIEW IS FOR GENERAL COMPLIANCE WITH CONTRACT DOCUMENTS. NO RESPONSIBILITY IS ASSUMED FOR CORRECTNESS OF DIMENSIONS OR DETAILS	
<input checked="" type="checkbox"/>	NO EXCEPTIONS TAKEN
<input type="checkbox"/>	MAKE CORRECTIONS NOTED
<input type="checkbox"/>	AMEND & RESUBMIT
<input type="checkbox"/>	REJECTED - SEE REMARKS
LOUREIRO ENGINEERING ASSOCIATES, P.C. CONSULTING ENGINEERS	
DATE: 10/17/97	BY: DSO

September 22, 1997

FJS#9719

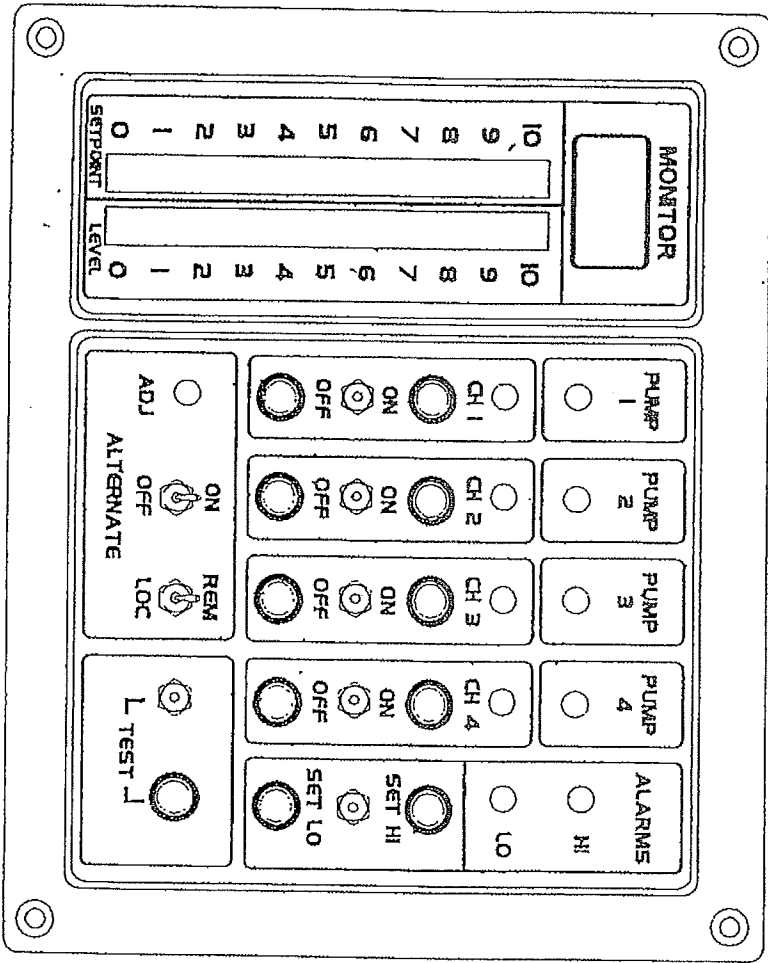
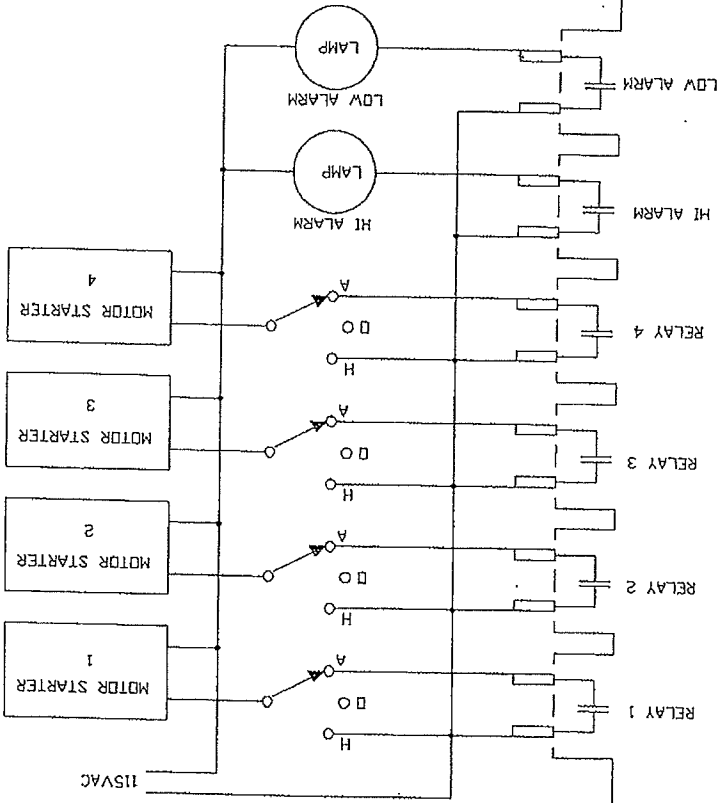


FIG. 2 UPC FRONT PANEL

UPC 4 PUMP INTERCONNECT



PUMP RUNNING SWITCHES USED TO CONFIRM PUMP START USE PRESSURE SWITCH CHECK VALVE SWITCH OR MOTOR STARTER CONTACT. OPTIONAL

HIGH FLOAT
OFF FLOAT

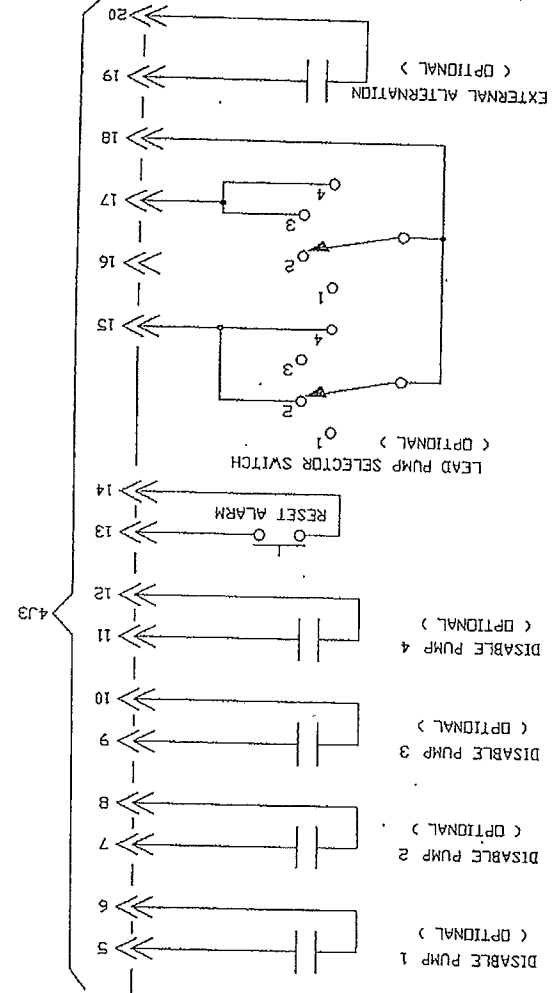
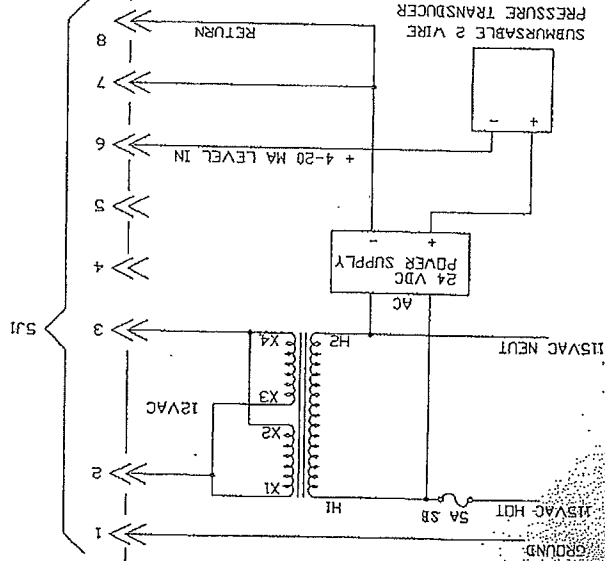
PUMP 1 RUNNING
PUMP 2 RUNNING
PUMP 3 RUNNING
PUMP 4 RUNNING

12 TO 30 VOLT FLOAT SWITCH POWER

11436 UNIVERSAL PUMP CONTROLLER

5J1

4J3



GROUND

UFC RELEASE 5 INTERCONNECT
DRAWING 11436-5

