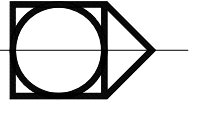




COMMUNITY RENEWAL TEAM

555 Windsor
Hartford, CT 06120



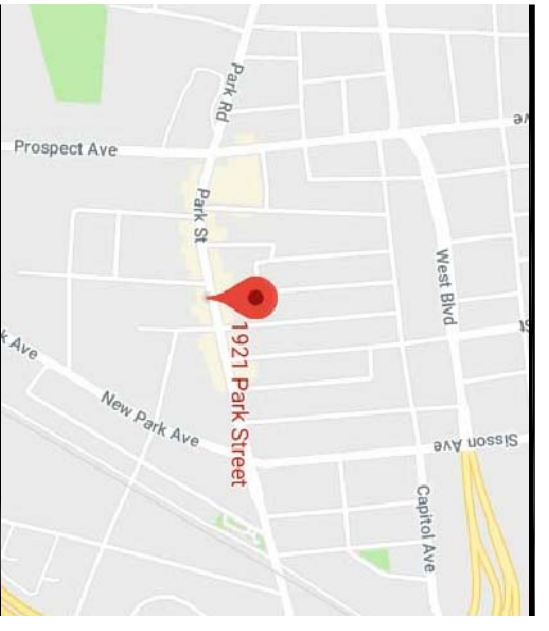
LIFECARE DESIGN INC.

1429 Park St, Ste 201
Hartford Ct, 06106

architecture - planning - interior design

CRT OFFICE RENOVATIONS

1921 Park St.
Hartford, CT 06106

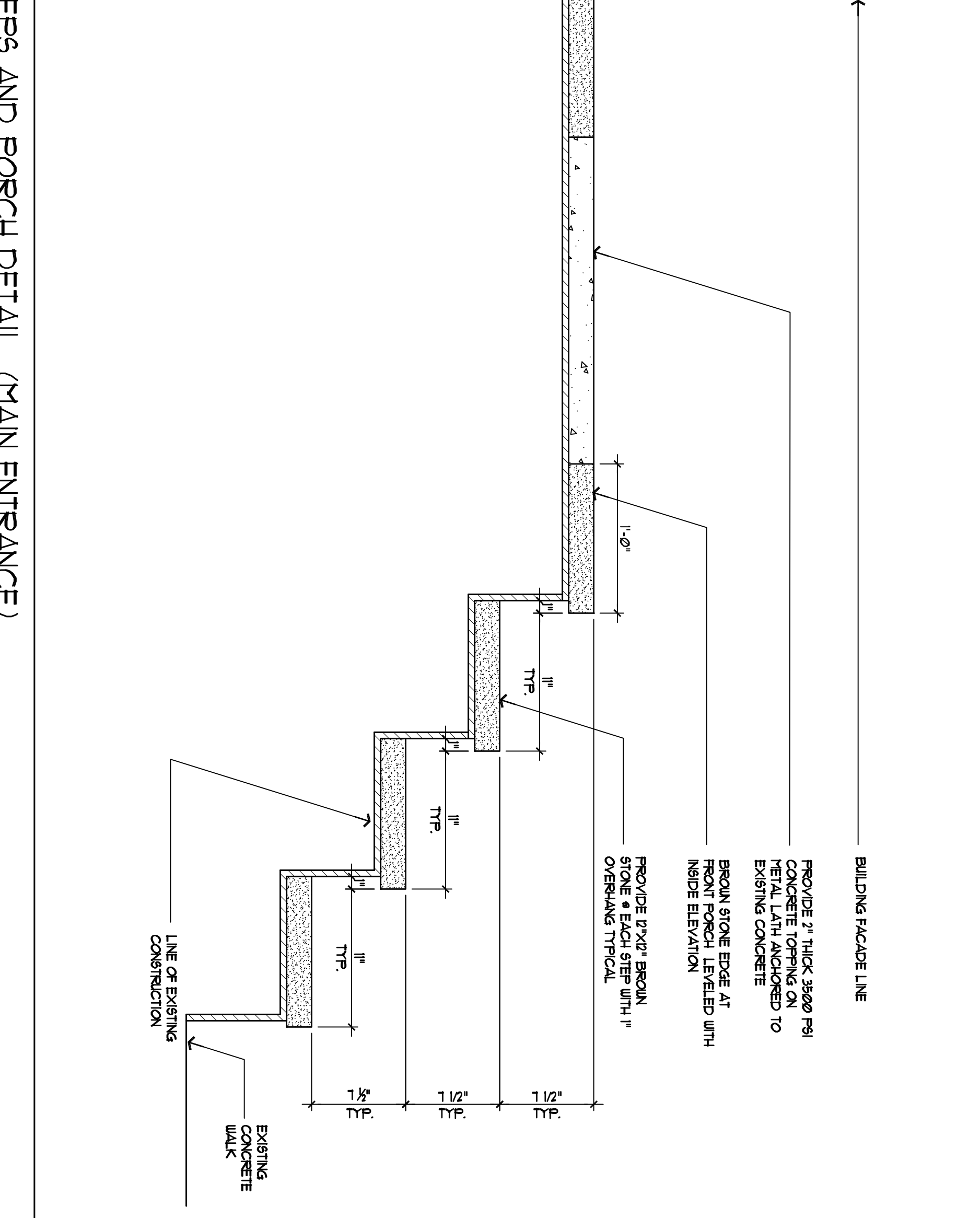


Issue or revision	date

DETAILS

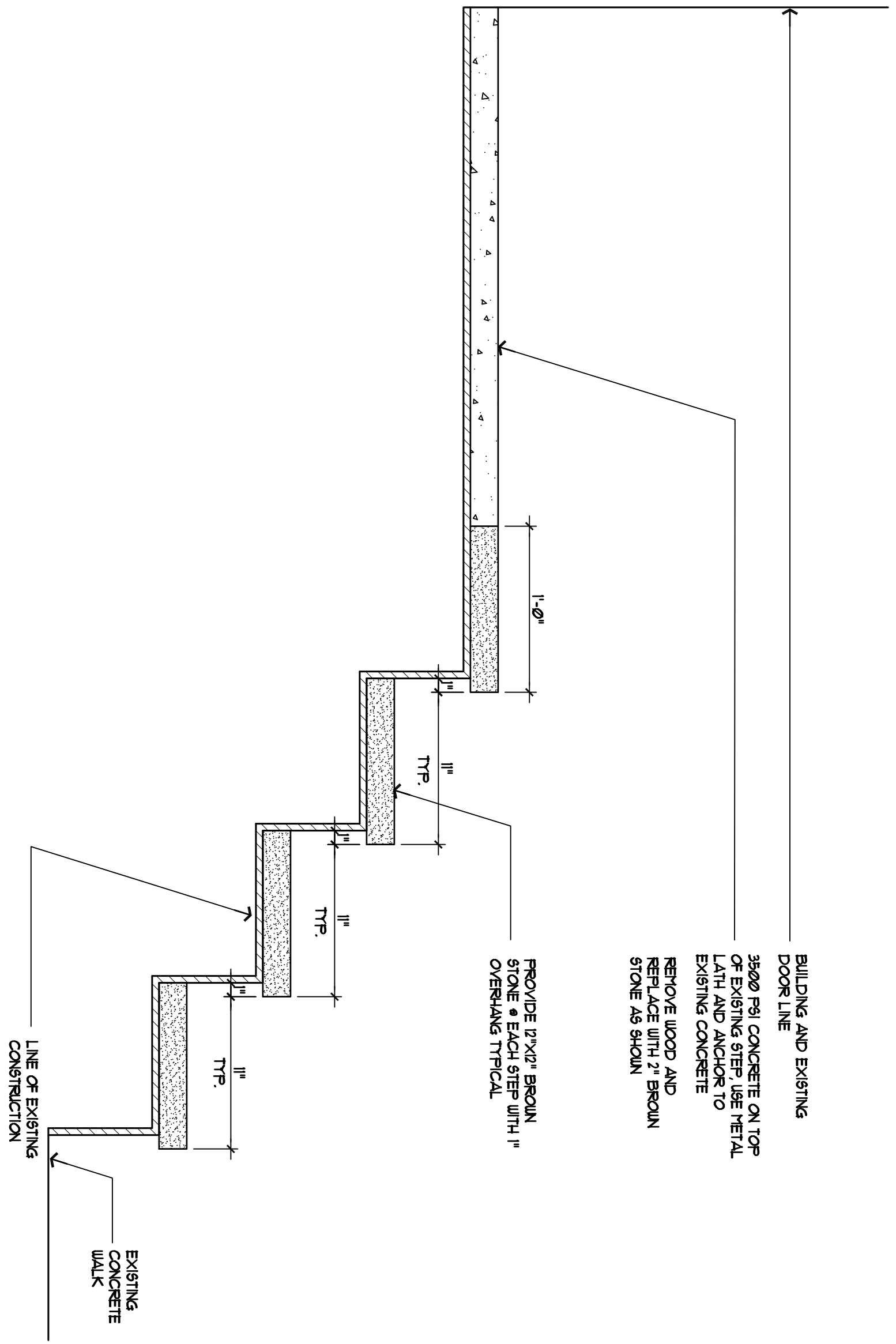
drawing title	
scale:	as indicated
designer:	h.c.b.
project no.:	19715
drawn by:	g.s.
date:	7/17/19
checked by:	h.c.b.
sheet number	A-2
	4 of 5

THIS DOCUMENT SHALL NOT BE MODIFIED IN ANYWAY BY ANY PERSON UNLESS ACTING UNDER THE DIRECTION OF A REGISTERED ARCHITECT EVERY DRAWING SEALED AND SIGNED BY A REGISTERED ARCHITECT COULD BE MODIFIED ONLY BY A REGISTERED ARCHITECT AND THE NATURE OF SUCH MODIFICATION DESCRIBED SHALL BE FOLLOWED BY THE DATE OF MODIFICATION PLUS THE SEAL AND SIGNATURE OF THE ARCHITECT MAKING SUCH MODIFICATION.



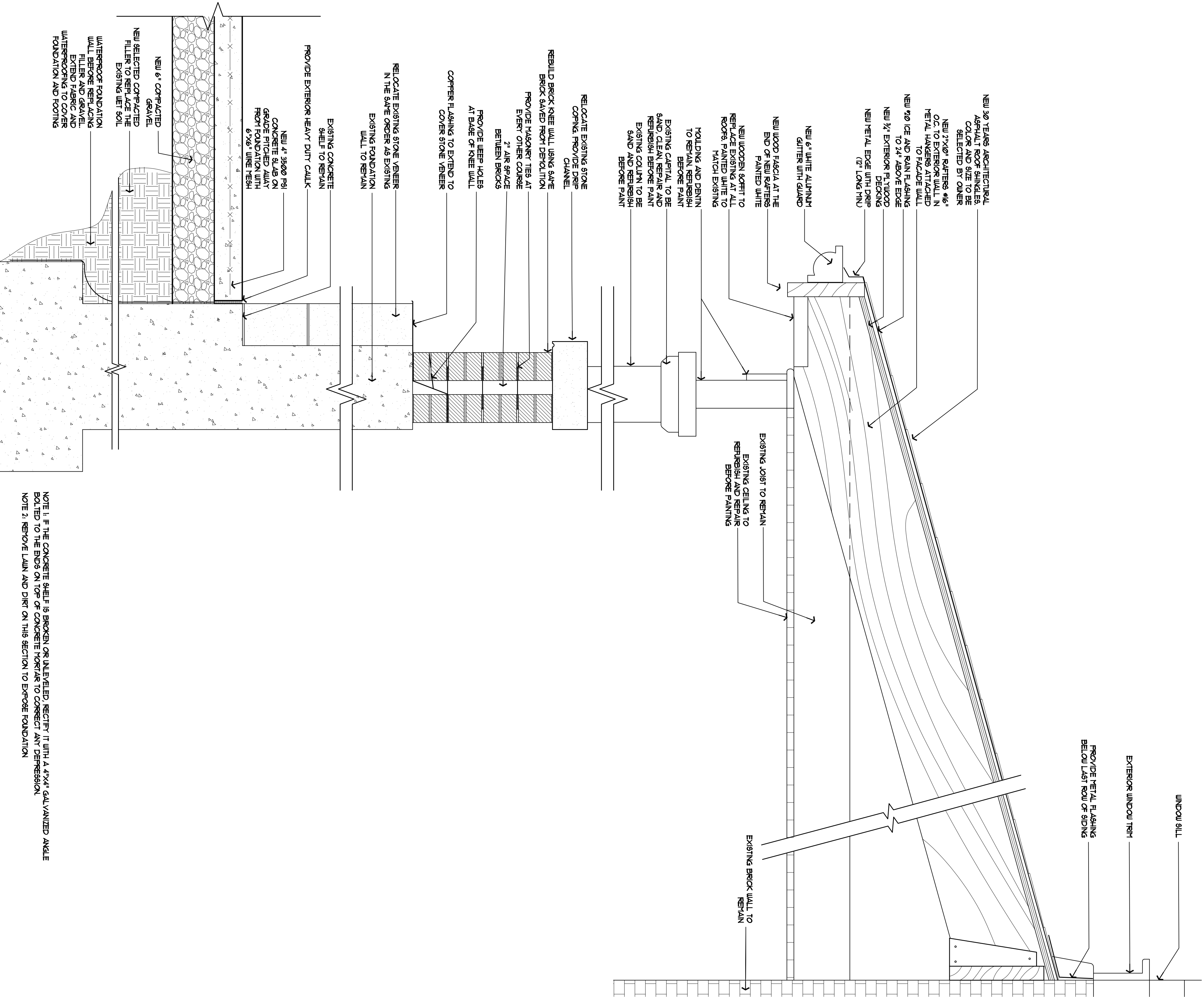
1 STEPS AND PORCH DETAIL (MAIN ENTRANCE)

SCALE: 1/2"=1'-0"



2 STEPS AND PORCH DETAIL (EGRESS DOOR)

SCALE: 1/2"=1'-0"



3 PORCH FOUNDATION AND ROOF DETAIL

SCALE: 1/2"=1'-0"

NOTE 1: IF THE CONCRETE SHELF IS BROKEN OR UNLEVELLED, RECTIFY IT WITH A 4"x4" GALVANIZED ANGLE BOLTED TO THE BIDS ON TOP OF CONCRETE FORTAR TO CORRECT ANY DEPRESSION.
NOTE 2: REMOVE LAMIN AND DIRT ON THIS SECTION TO EXPOSE FOUNDATION.