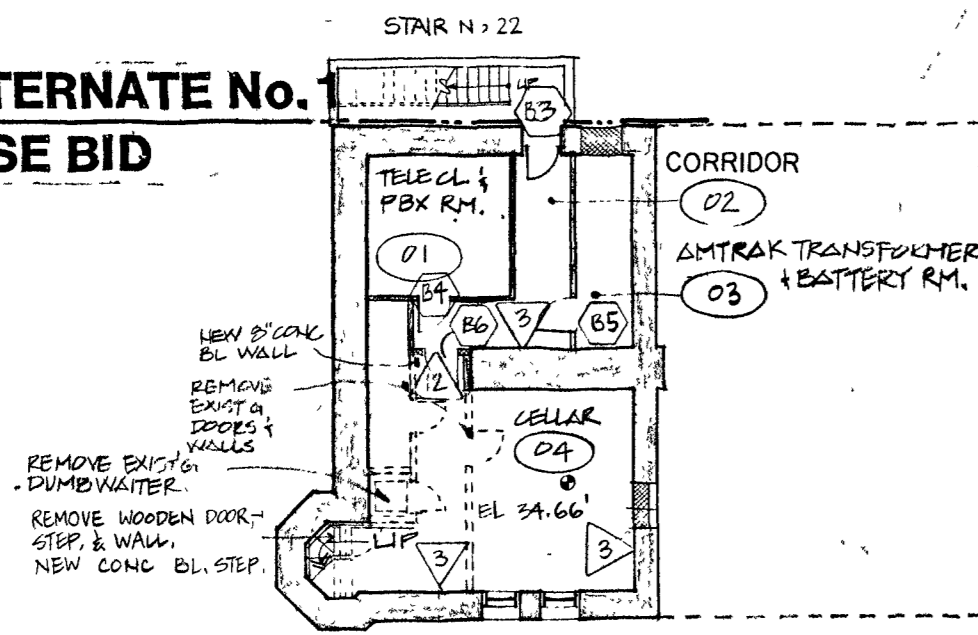
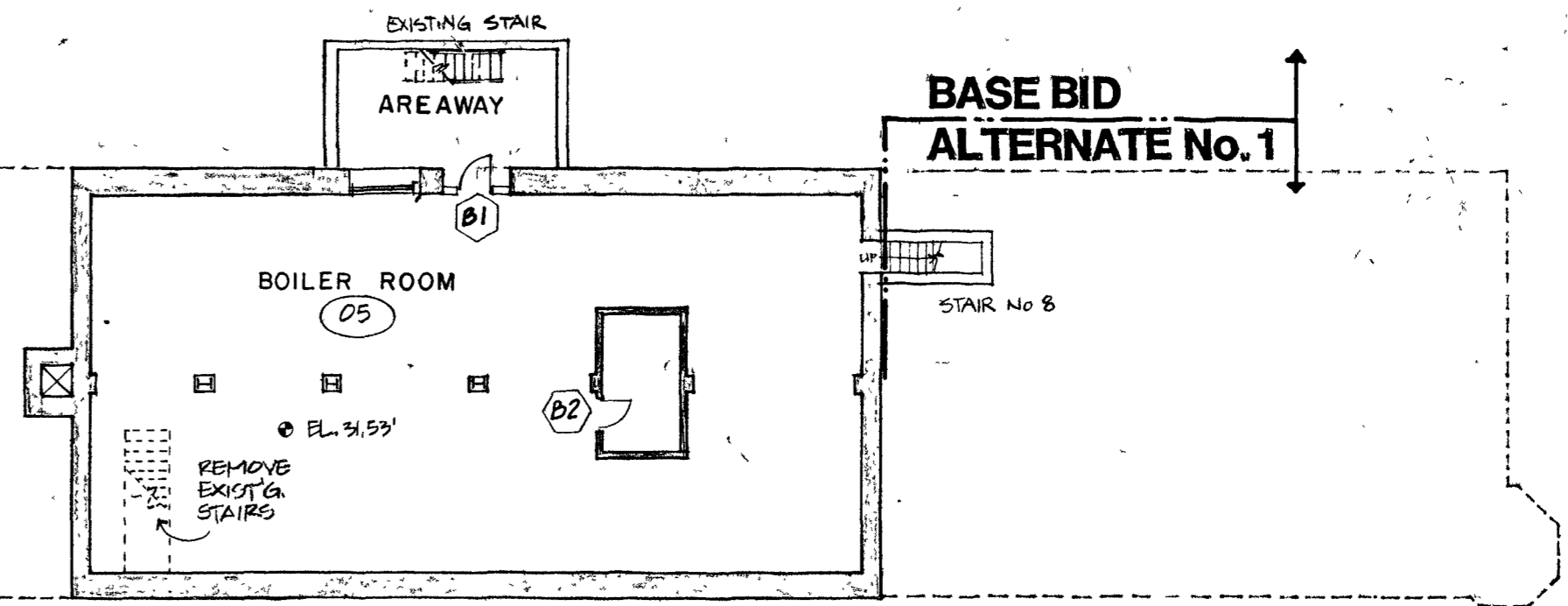


ALTERNATE No. 1
BASE BID

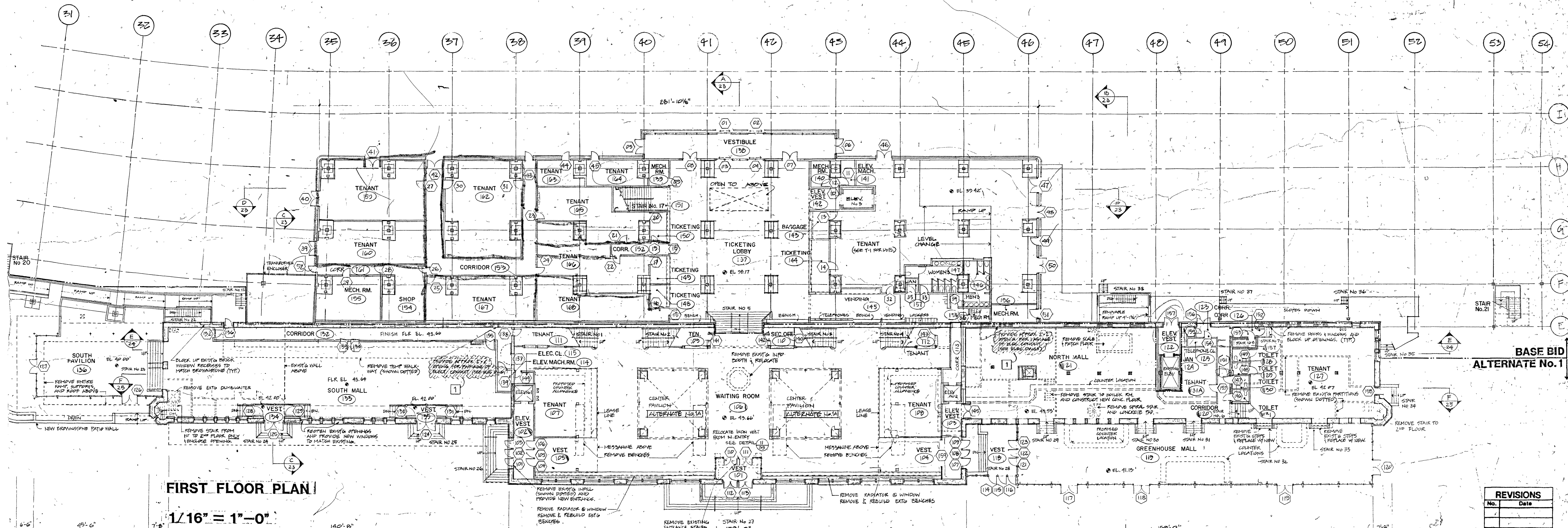


BASE BID
ALTERNATE No. 1



BASEMENT PLAN

1/16" = 1'-0"



FIRST FLOOR PLAN

1/16" = 1'-0"

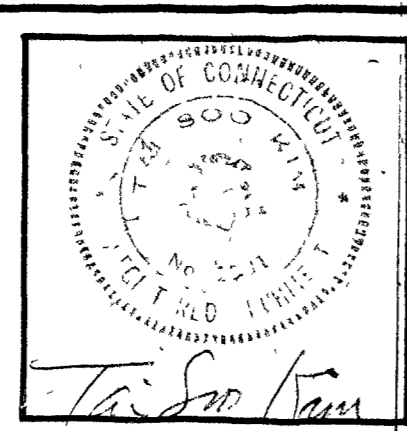
NOTE: REMOVE ANY EXISTING WALL NOT SHOWN AS WALL
SHADED WALLS ARE EXISTING WALL

BASE BID
ALTERNATE No. 1

REVISIONS	
No.	Date

HARTFORD DESIGN GROUP, Architect
292 S Marshall, Hartford, CT 06104-1970

MUELLER ENGINEERING CORP.
Mechanical & Structural Engineers



PHASE THREE
UNION STATION TRANSPORTATION CENTER

Prepared in Cooperation with the Greater Hartford Transit District and the
U.S. Department of Transportation, Urban Mass Transportation Administration

DATE: 20 JUNE, 1985
SCALE: 1/16" = 1'-0"
DWG: BH, VG
CHK: T.S.R.

FIRST FLOOR PLAN

A-10