



**Additions and Renovations  
Platt Technical High School  
Milford, CT**

**ADDENDUM NO. 9**

August 29, 2019

The original Specifications and Drawings dated May 24, 2019, Addendum No.1 dated July 23, 2019, Addendum No.2 dated July 29, 2019, Addendum No.3 dated August 2, 2019, Addendum No.4 dated August 9, 2019, Addendum No.5 dated August 15, 2019, Addendum No.6 dated August 21, 2019, Addendum No.7 dated August 26<sup>th</sup> and Addendum No.8 dated August 27<sup>th</sup> for the above-captioned project are amended as stated in this Addendum. This Addendum consists of four (4) pages, plus the following attachments.

**BID TIME AND DATE REMAIN UNCHANGED AS REVISED IN ADDENDUM No.8**

**ATTACHMENTS**

- |  |           |
|--|-----------|
| <b>BID PACKAGE No.03, Concrete, Precast Connection Details</b> | (2 pages) |
| <b>LANDSCAPE ARCHITECTURE DRAWINGS</b><br>L-503, L-507, L-508  | (3 pages) |

**AMENDMENTS TO ADDENDUM NO.3**

**DIVISION 08 – OPENINGS**

- ADD 9-001      ADDENDUM NO.3, Page 8, ITEM ADD 3-030 – SECTION 08 45 23 – FIBERGLASS-SANDWICH-PANEL ASSEMBLIES**  
DELETE Addendum Item ADD 3-030. Requirements to meet FM Global Wind Speed shall REMAIN.

**AMENDMENTS TO ADDENDUM NO.4**

**DIVISION 08 – OPENINGS**

- ADD 9-002      ADDENDUM NO.4, Page 7, ITEM ADD 4-031 – SECTION 08 45 23 – FIBERGLASS-SANDWICH-PANEL ASSEMBLIES**  
DELETE the words “FM 4411 and.”
- ADD 9-003      ADDENDUM NO.4, Page 7, ITEM ADD 4-033 – SECTION 08 45 23 – FIBERGLASS-SANDWICH-PANEL ASSEMBLIES**  
REPLACE Article 1.4, Paragraph “l” with the following:  
     “l.            Certify compliance with requirements for Class 1, Exterior Wall System per FM 4881. Provide panels that are marked with the FM 4881 Approval Stamps.”



## AMENDMENTS TO ADDENDUM NO.5

### DIVISION 08 – OPENINGS

- ADD 9-004**      **ADDENDUM NO.5, Page 2, ITEM ADD 5-003 – SECTION 08 45 23 – FIBERGLASS-SANDWICH-PANEL ASSEMBLIES**  
DELETE Addendum Item ADD 5-003. Item ADD 4-037 published in Addendum No.4 shall REMAIN.

## AMENDMENTS TO PROJECT MANUAL

### DIVISION 00 – PROCUREMENT AND CONTRACTING REQUIREMENTS

- ADD 9-005**      **SECTION 00 41 10 – BID PACKAGE SUBMITTAL REQUIREMENTS**  
BID PACKAGE No.02, Site Work:  
ADD the following: The contractor shall include a \$100,000 allowance in their bid package for the Water Connection Fee and Two wet taps to the Meter Pits for connection of the Site Water by the Water Company.
- ADD 9-006**      **SECTION 00 41 10 – BID PACKAGE SUBMITTAL REQUIREMENTS**  
BID PACKAGE No.03, Concrete:  
Per the attached Sketch from the Precast Supplier, Precast Connection Details:  
This is a reference to Detail F1A on Drawing S3-1-1.  
The count of the sleeves in reference to the bottom of the Precast Wall Panels as shown at 48" O.C. is 882 pieces.
- ADD 9-007**      **SECTION 00 41 10 – BID PACKAGE SUBMITTAL REQUIREMENTS**  
BID PACKAGE No.03, Concrete:  
Per the attached Sketch from the Precast Supplier, Precast Connection Details:  
This is a reference to Detail R7 & R8 on Drawing S5-2-3 (Addendum No.04)  
#4 rebar shall be @ 48 O.C. – Grout Cores Solid – Typical.

### DIVISION 03 – CONCRETE

- ADD 9-008**      **SECTION 03 40 40 – STRUCTURAL PRECAST SYSTEMS**  
Page 6, Part 2.1-D.2, REVISE the following Section:  
2. Non-metallic, non-corrosive, non-staining product containing selected silica sands, Portland cement, shrinkage compensating materials, water-reducing admixtures, complying with ASTM C 1107. *Minimum compressive strength of 5,000 psi at 7 days.*
- ADD 9-009**      **SECTION 03 45 00 – ARCHITECTURAL PRECAST CONCRETE**  
Page 8, Article 2.8, Paragraph A., ADD the following after the first sentence:  
*"Minimum compressive strength of 5,000 psi at 7 days."*



## **DIVISION 09 – FINISHES**

### **ADD 9-010 SECTION 09 30 19 – PORCELAIN TILING**

Page 17, Article 2.8, Paragraph E: DELETE its entirety and REPLACE with the following:

- E. Miscellaneous
  - 1. Uncoupling / Waterproofing Membrane for floors: Subject to compliance with the requirements specified herein, manufacturers offering products which may be incorporated in the work include the following, or equal
    - a. Basis of design: Permat by Blanke Industries, Inc.
    - b. StrataMAT XT from Laticrete International, Inc.
    - c. DitraHEAT XT by Schluter
    - d. Or approved equal: Provide a product meeting ANSI A118.10 and as defined by TCA for “Uncoupling System”.
  - 2. Grout and Stone sealer: Grout and stone should be sealed after grouting and before space is open to the public.
    - a. Basis of design: Stonetech Bulletproof by LATICRETE International, Inc
    - b. 511 Impregnator, Manufactured by Miracle Sealants and Abrasives
    - c. Sealers choice gold, By Aqua Mix products

## **DIVISION 22 – PLUMBING**

### **ADD 9-011 Section 22 11 23 – FACILITY NATURAL GAS PIPING**

Page 7 Articles 2.9: Add.

- A. Product Description (Ventless): Spring loaded, general purpose, self-operating service regulator including internal relief type diaphragm assembly and vent valve. Diaphragm case can be rotated 360 degrees in relation to body.
  - 1. Comply with ANSI Z21.80.
  - 2. Temperatures: minus 20 degrees F to 150 degrees F.
  - 3. Body: Steel.
  - 4. Spring case, lower diaphragm casing, union ring, seat ring and disk holder: Aluminum.
  - 5. Disk, diaphragm, and O-ring: Nitrile
  - 6. Maximum inlet pressure: 150 psig.
  - 7. Vent line regulator for vent limiting device for indoor applications only.
  - 8. Furnish sizes 2 inches and smaller with threaded ends. Furnish sizes 2-1/2 inches and larger with flanged ends

## **DIVISION 32 – EXTERIOR IMPROVEMENTS**

### **ADD 9-012 SECTION 32 31 13 – CHAIN LINK FENCES AND GATES**

Page 2, Article 2.1, Paragraph B, Subparagraph 1 DELETE “local Codes” and REPLACE with “Connecticut State Building Code”.



## AMENDMENTS TO DRAWINGS

### LANDSCAPE ARCHITECTURE

- ADD 9-013      DRAWING L-503– SITE DETAILS**  
Modify Detail 2 Chain Link Fence REVISE dimension for footing as noted. Refer to revision tag RL9-01.
- ADD 9-014      DRAWING L-507– SITE DETAILS**  
Modify Detail 5 Baseball Backstop ADD footing 2'-4" Dia. dimension as noted. ADD "6 5/8" Post, 1.66" Top Mid and Bottom Rails" as noted. Refer to revision tag RL9-02.  
Modify Detail 6 Softball Backstop ADD footing depth 5'-6" Min. and 1'-4" Dia. dimensions as noted. ADD "4" Post, 1.66" Rails, and 2 3/8" Hood Framework" as noted. Refer to revision tag RL9-03.
- ADD 9-015      DRAWING L-508– SITE DETAILS**  
Modify Detail 5 Batting Cage ADD footing depth 4' Min. and 1'-4" Dia. dimensions as noted. ADD "4" Post, 1.66" Rails" as noted. ADD "1 7/8" Strut" as noted. ADD 2 3/8" Roof Framing and Support Structure" as noted. Refer to revision tag RL9-04.

### ARCHITECTURAL FINISHES

- ADD 9-016      DRAWINGS AF1-1-1A, AF1-1-B, AF1-2-1C, AF1-1-1D, AF1-1-1E, AF1-1-1F, AF1-1-1G, AF1-1-2B, AF1-1-2C, AF1-1-2D, AF1-1-2E - FLOOR FINISHES PLANS**  
ADD "General Notes 8" to the sheet per the following:
- “8.    PROVIDE UNCOUPLING/ WATERPROOFING MEMBRANE OVER ENTIRE FLOOR AREA WHICH RECEIVES PORCELAIN TILE.
- ADD 9-017      DRAWING AF1-1-B - FIRST LEVEL FLOOR FINISHES PLAN – AREA B**  
DELETE note "PROVIDE EXTRA CRACK SUPPRESSION MEMBRANE, TYP."

### STRUCTURAL

- ADD 9-018      DRAWING S1-1-3C – THIRD FLOOR AND ROOF FRAMING PLAN – AREA C**  
REVISE section designation near column "KK-21.8" to read "S5/S4-1-4".

**E N D   O F   A D D E N D U M   N O . 9**

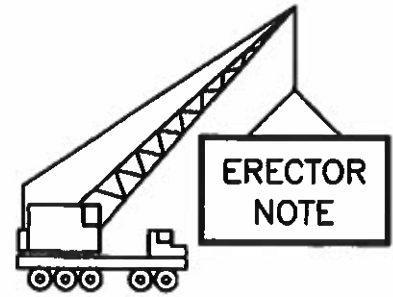


BID PACKAGE NO.3, CONCRETE,  
SUPPLEMENTAL INFORMATION.

ISSUED FOR CLARIFICATION OF  
GROUTING SCOPE.

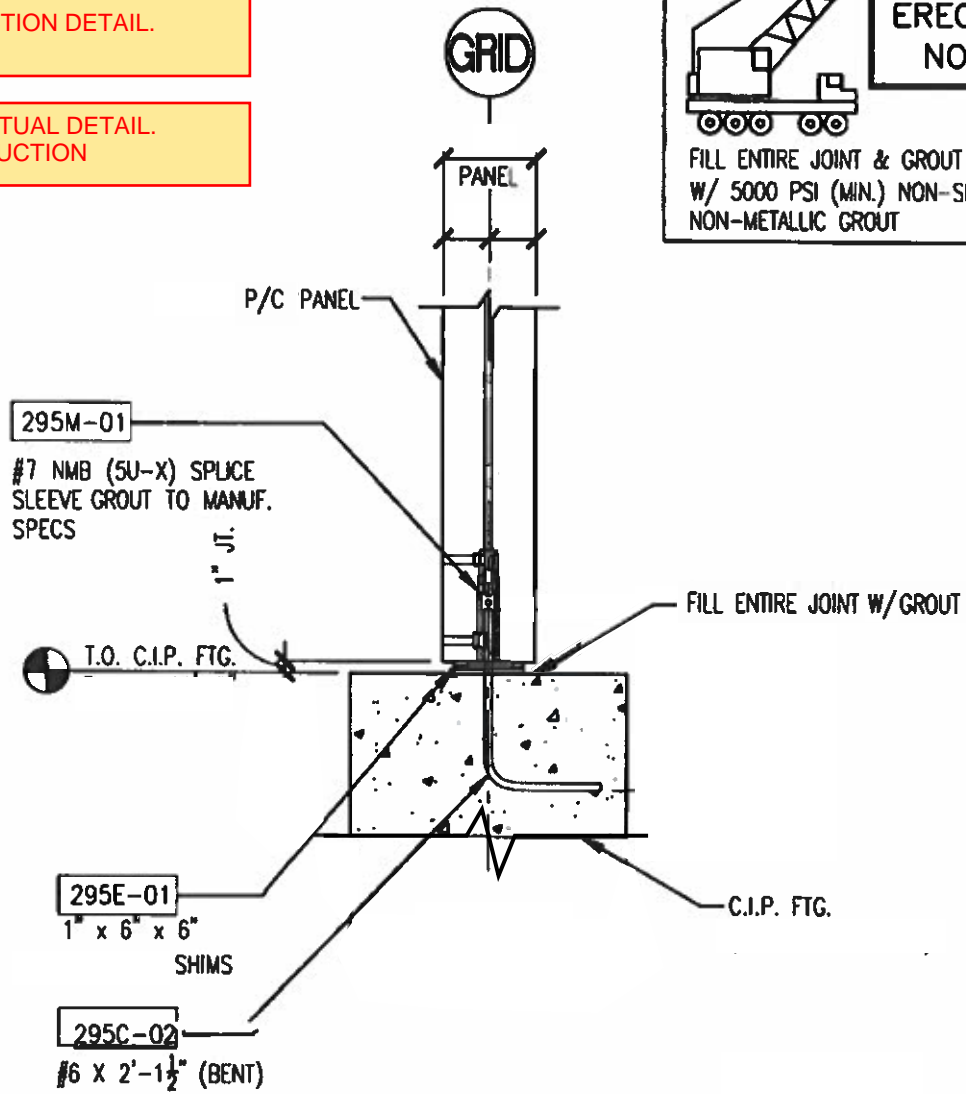
PRECAST CONNECTION DETAIL.  
ADDENDUM NO. 9

GENERIC CONCEPTUAL DETAIL.  
NOT FOR CONSTRUCTION

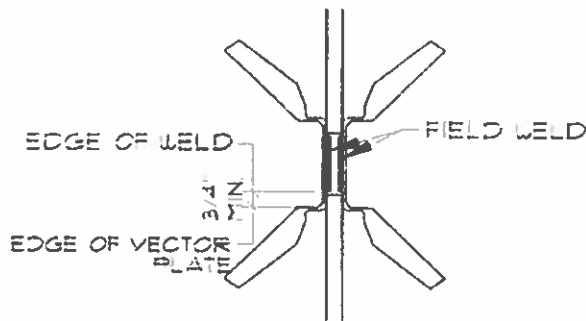


**ERECTOR  
NOTE**

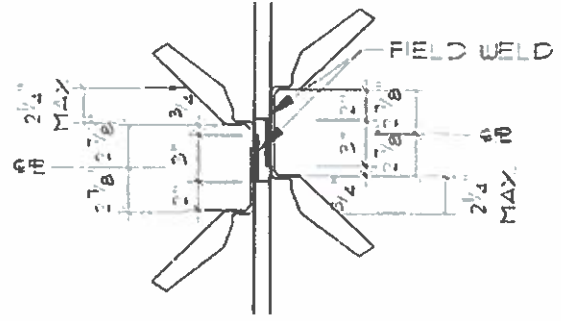
FILL ENTIRE JOINT & GROUT TUBE  
W/ 5000 PSI (MIN.) NON-SHRINK,  
NON-METALLIC GROUT



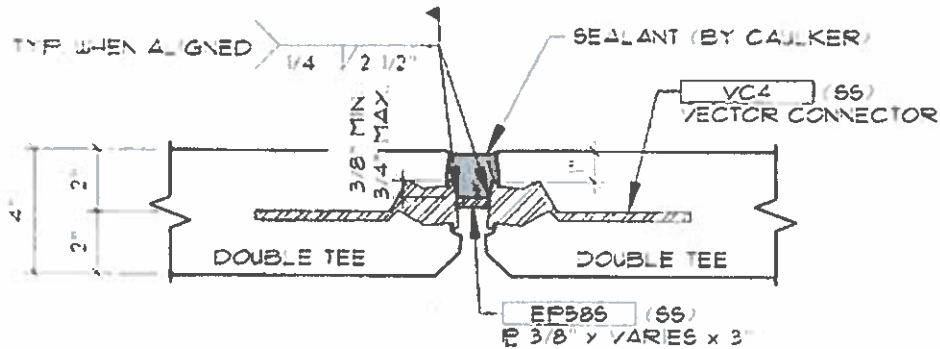
**882 pcs**



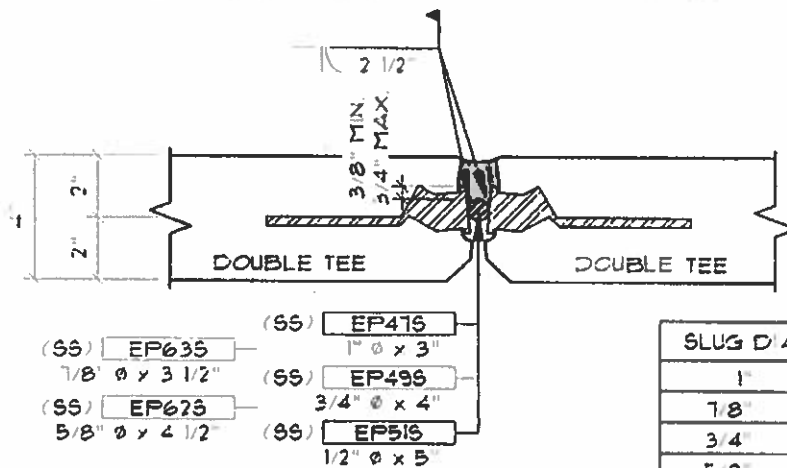
**ALIGNED VECTORS IN PLAN**



**MAXIMUM MIS-ALIGNED VECTORS IN PLAN**



**DETAIL FOR ERECTION PLATES OVER AND UNDER 1"**



- (SS) EP635 7/8"  $\phi$  x 3 1/2"
- (SS) EP675 5/8"  $\phi$  x 4 1/2"
- (SS) EP476 1"  $\phi$  x 3"
- (SS) EP496 3/4"  $\phi$  x 4"
- (SS) EP516 1/2"  $\phi$  x 5"

SLUG D/A	WELD LENGTH
1"	2 1/2"
7/8"	3"
3/4"	3 1/2"
5/8"	4"
1/2"	4 1/2"

**WELDING GUIDELINE PROCEDURES:**

- 1) PLACE THE WELD IN THE CENTER OF EACH JVI CONNECTOR FACEPLATE.
- 2) DO NOT PLACE ANY WELD CLOSER THAN 3/4" FROM THE END OF EXPOSED VECTOR CONNECTOR
- 3) DO NOT OVER WELD OR WELD NEAR ENDS.
- 4) MAINTAIN LEVEL PLANES WHEN SETTING FIELD PLATE.
- 5) AFTER WELDING ONE SIDE OF LOOSE PLATE, ALLOW TIME TO COOL BEFORE WELDING OTHER SIDE.

**NOTE:**

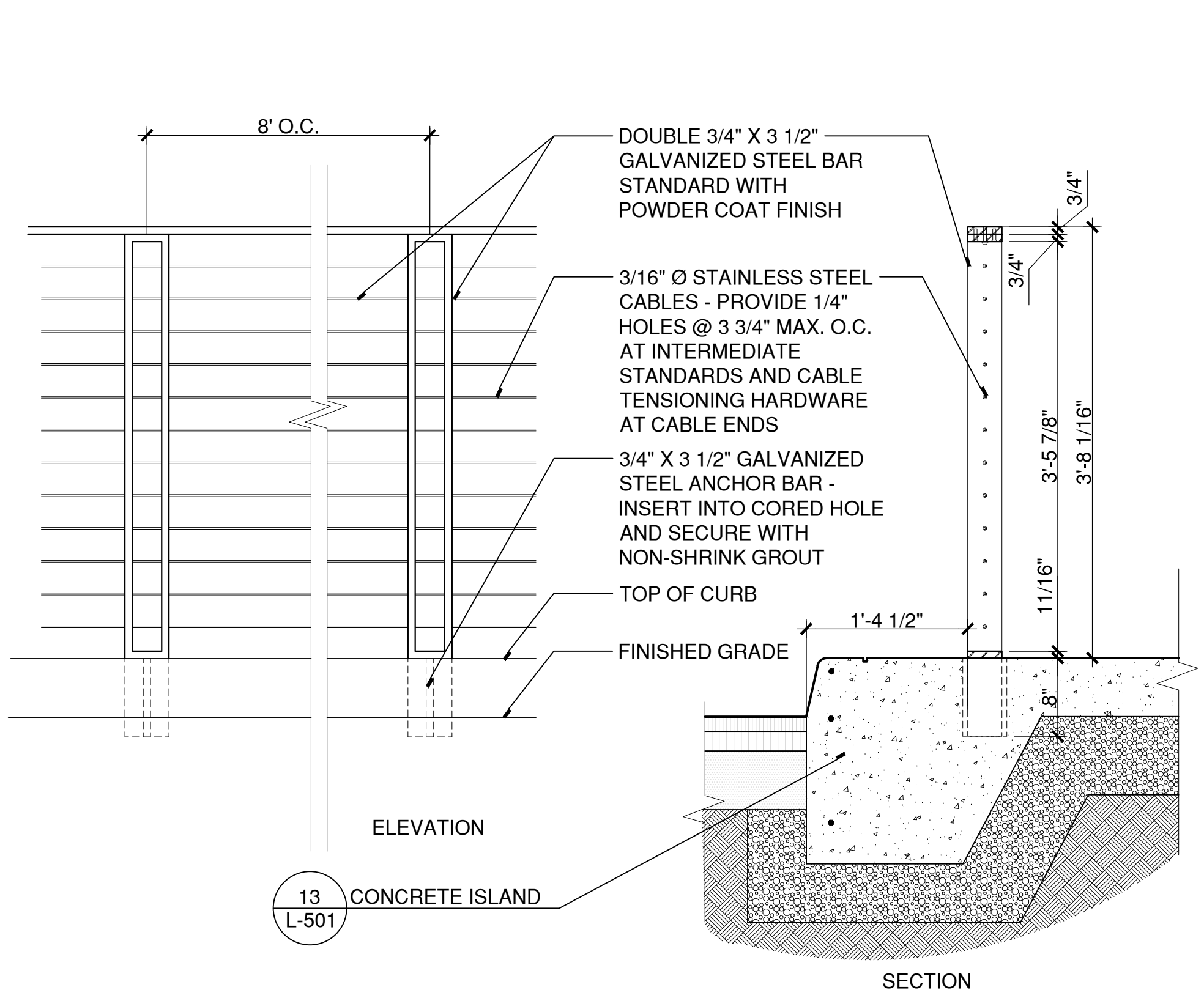
1. FINAL JOINT PREPARATION TO BE DONE IN CONFORMANCE WITH SEALANT MANUFACTURER'S SPECIFICATIONS.

BID PACKAGE NO.3, CONCRETE, SUPPLEMENTAL INFORMATION.

ISSUED FOR CLARIFICATION OF GROUTING SCOPE.

PRECAST CONNECTION DETAIL. ADDENDUM NO. 9

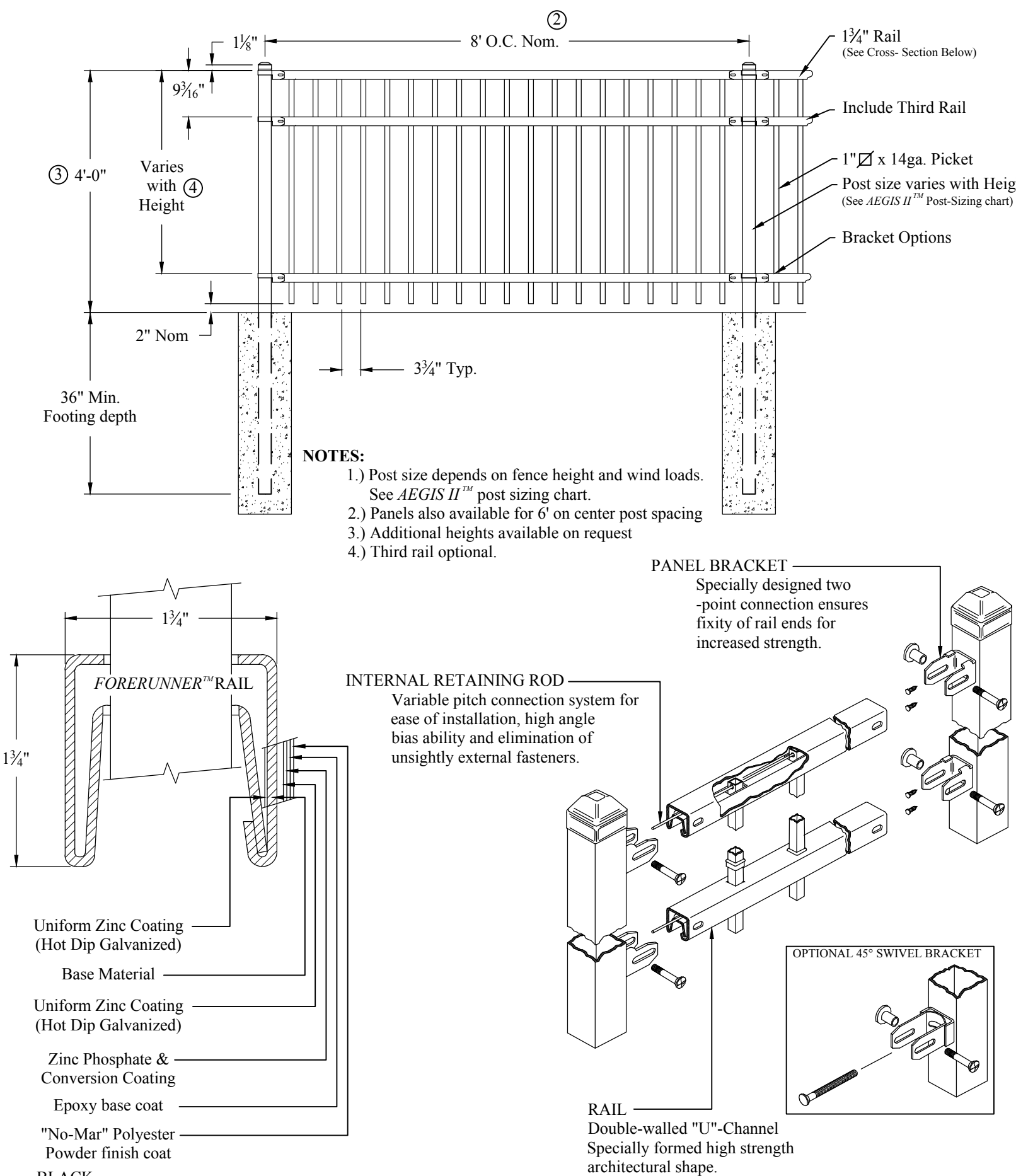
GENERIC CONCEPTUAL DETAIL. NOT FOR CONSTRUCTION



### 3 SEPARATION RAILING

SCALE: 1"=1'

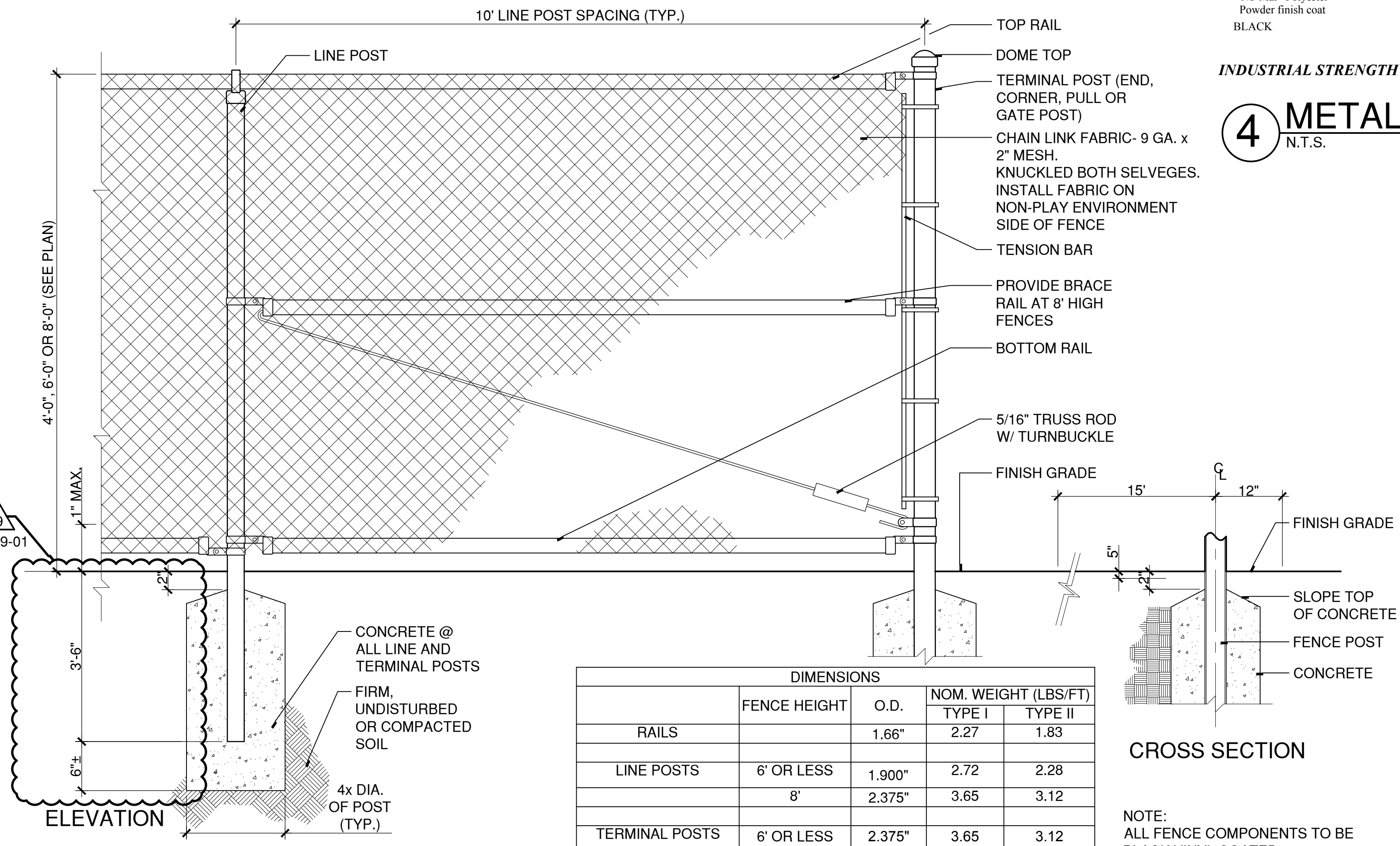
Z:\2017004\CONDOCC\Details\SEPARATION RAILING-DRA.dwg



### 4 METAL PICKET FENCE

N.T.S.

X:\CADD\STANDARD\DETAILS\323119-A.DWG



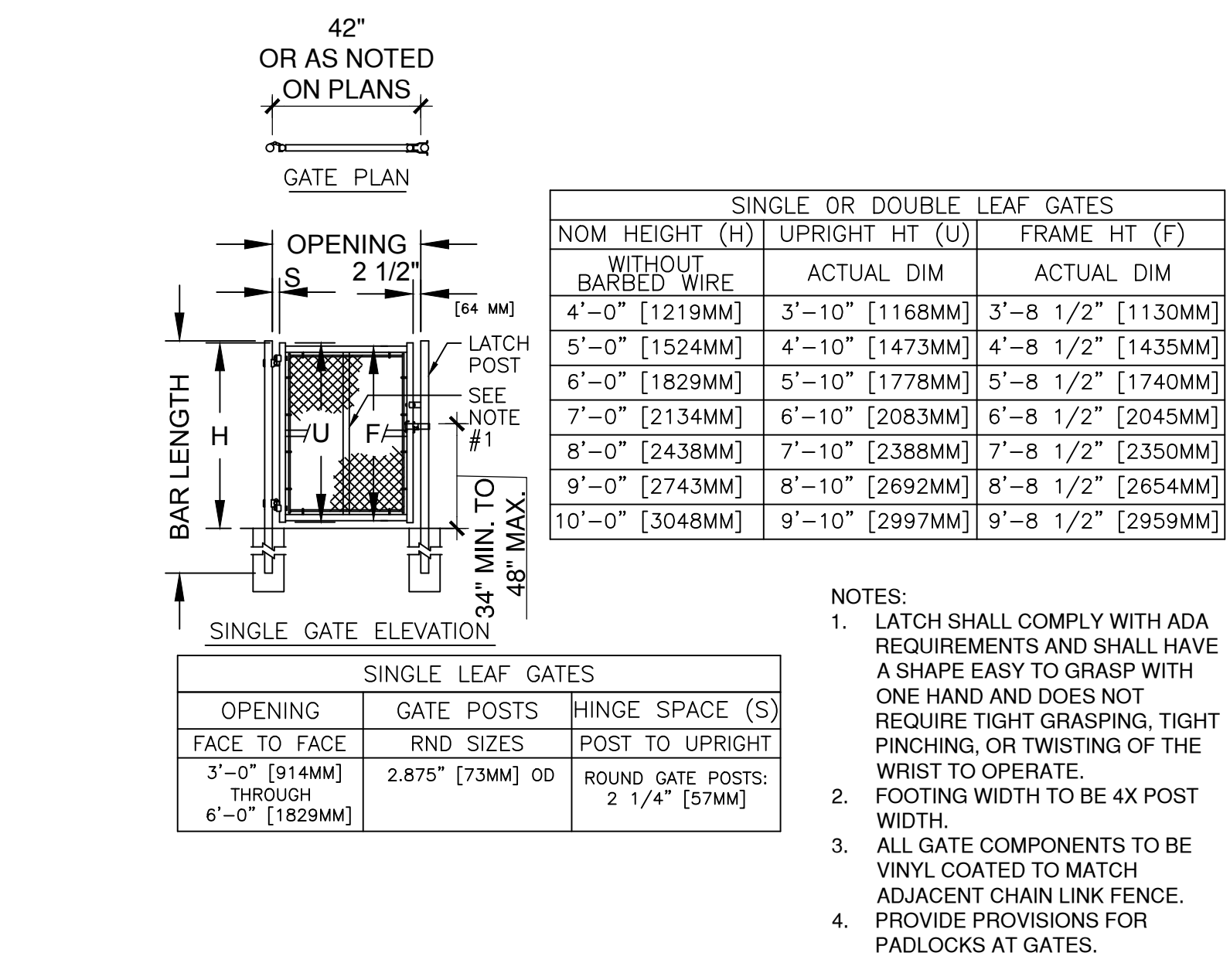
### 2 CHAIN LINK FENCE

N.T.S.

RAILS	DIMENSIONS		
	FENCE HEIGHT	O.D.	NOM. WEIGHT (LBS/FT)
	6' OR LESS	1.66"	2.27
	8'	2.375"	3.65
	6' OR LESS	2.375"	3.65
	8'	2.875"	5.79

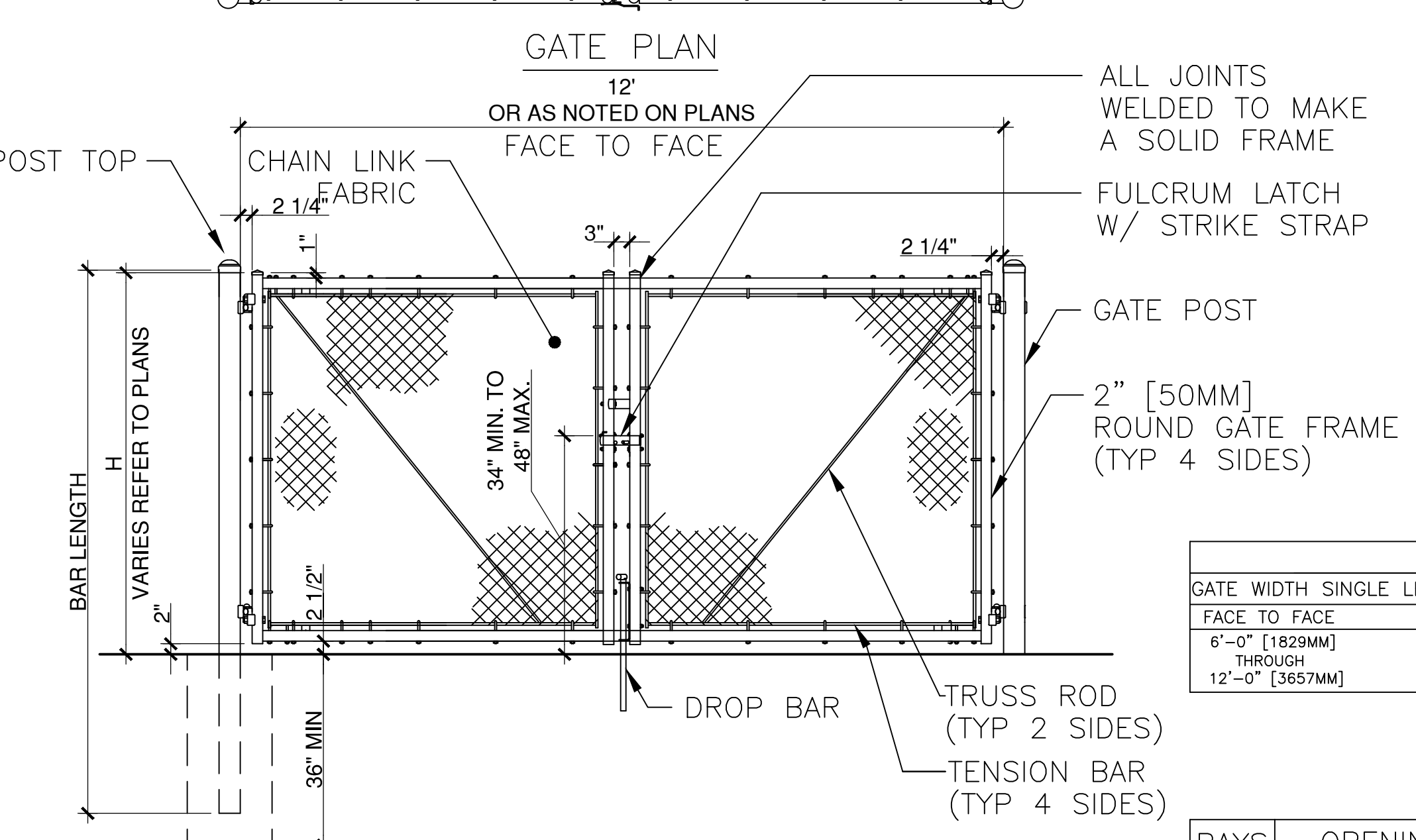
#### CROSS SECTION

NOTE: ALL FENCE COMPONENTS TO BE BLACK VINYL COATED



### 5 CHAIN LINK FENCE GATES

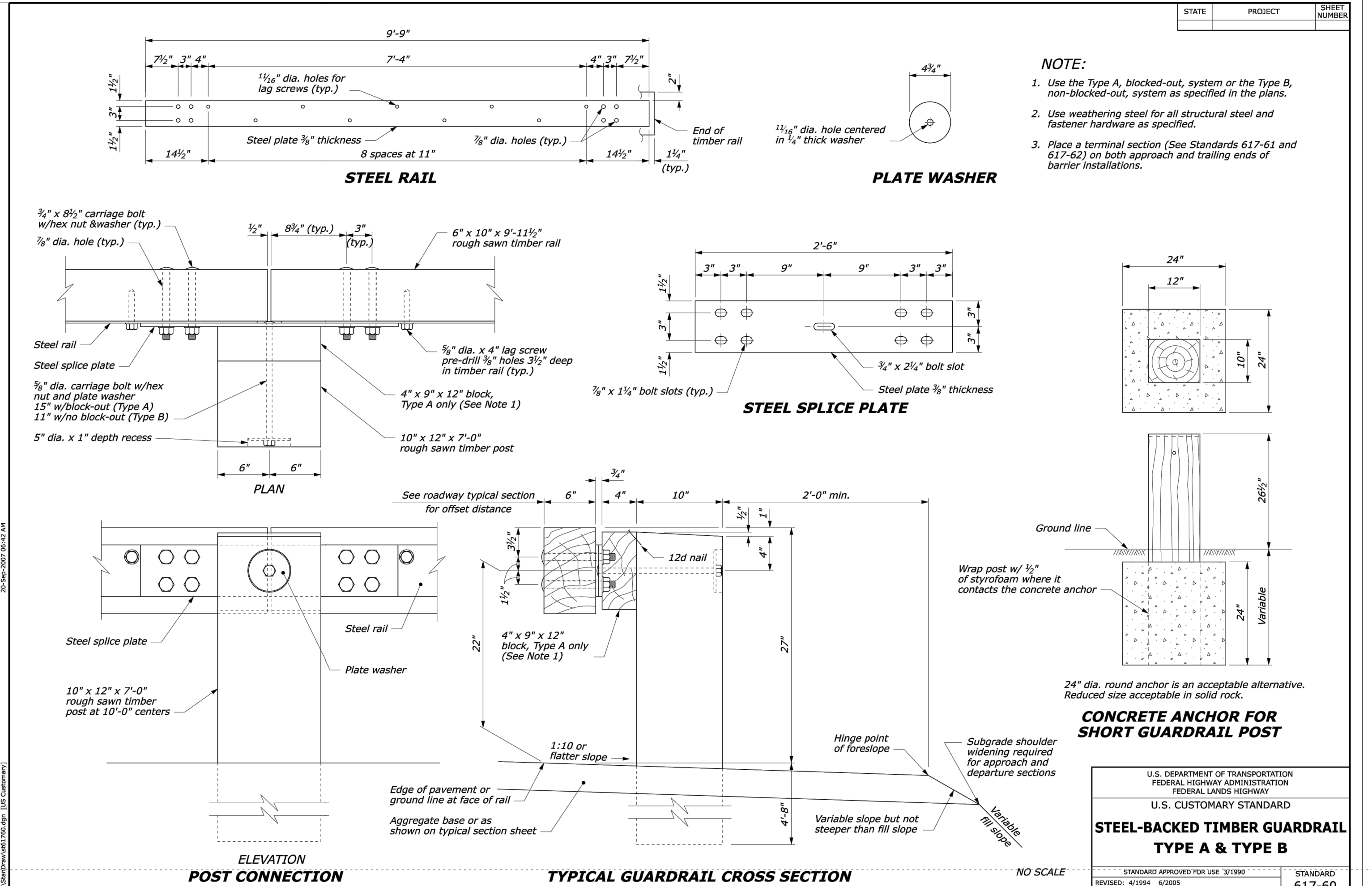
N.T.S.



DOUBLE LEAF GATES			
GATE WIDTH	SINGLE LEAF	GATE POSTS	HINGE SPACE (S)
FACE TO FACE	RND SIZES	POST TO UPRIGHT	
6'-0" [1829MM]	4" [101.6MM]	FOR ROUND GATE POSTS:	9.11 LB/FT [13.6 KG/M]
12'-0" [3657MM]		2 1/4" [57MM]	

BAYS	OPENING (F/F)
2	12'-0"

W:\2013023\CONDOCC\DETAILS\CHAIN LINK GATE.DWG



### 1 STEEL-BACKED TIMBER GUARDRAIL

SCALE: 1"=1'

U.S. DEPARTMENT OF TRANSPORTATION  
FEDERAL HIGHWAY ADMINISTRATION  
FEDERAL LANDS HIGHWAY  
U.S. CUSTOMARY STANDARD  
**STEEL-BACKED TIMBER GUARDRAIL  
TYPE A & TYPE B**  
STANDARD APPROVED FOR USE 3/1996  
REVISION: 4/1994 6/2001  
STANDARD 617-60

NOTE:  
1. Use the Type A, blocked-out, system or the Type B, non-blocked-out, system as specified on the plans.  
2. Use weathering steel for all structural steel and fastener hardware as specified.  
3. Place a terminal section (See Standards 617-61 and 617-62) on both approach and trailing ends of barrier installations.

GUARDRAIL FLARE RATE TABLE			
Design Speed (mph)	Shy line offset (ft)	Flare rate inside shy line (a:b)	Flare rate outside shy line (c:d)
60	8.0	26:1	14:1
50	6.5	21:1	11:1
40	5.0	16:1	8:1
30 and less	3.5	13:1	7:1

U.S. DEPARTMENT OF TRANSPORTATION  
FEDERAL HIGHWAY ADMINISTRATION  
FEDERAL LANDS HIGHWAY  
U.S. CUSTOMARY STANDARD  
**STEEL-BACKED TIMBER GUARDRAIL  
TERMINAL SECTION  
TYPE SBT-FAT**  
STANDARD APPROVED FOR USE 3/1996  
REVISION: 4/1994 6/2001  
STANDARD 617-61

NOTE:  
1. PROVIDE TYPE "A" BLOCKED OUT SYSTEM.  
2. SEE DETAIL (X/L-XXX) FOR RAIL POSITION ABOVE AND BEHIND CURB.

100% CONSTRUCTION DOCUMENTS

**SITE DETAILS**

drawing title

**STATE OF CONNECTICUT**  
DEPARTMENT OF ADMINISTRATIVE SERVICES

drawing prepared by  
**RICHTER & CEGAN INC.**  
88 CANAL COURT  
MILFORD, CT 06461

date  
**05/24/2019**

scale  
**AS NOTED**

drawn by  
**JMM**

approved by  
**MAC**

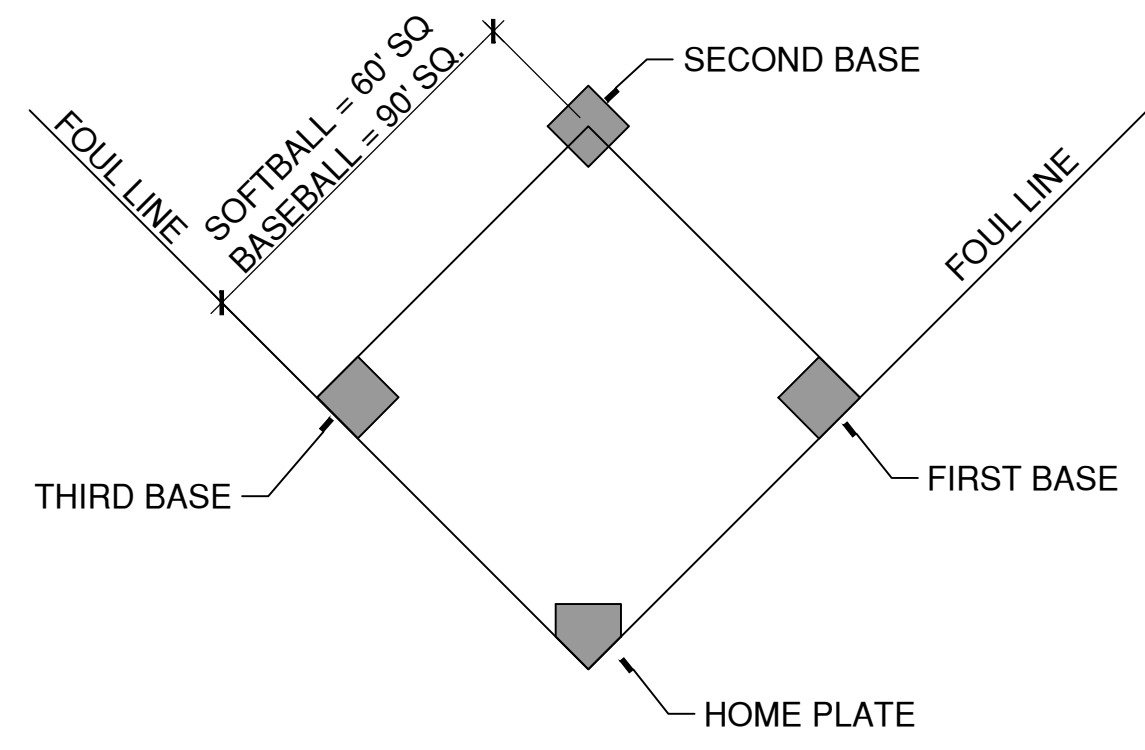
drawing no.  
**L-503**

project  
**PLATT TECHNICAL HIGH SCHOOL**  
680 Orange Avenue  
Milford, CT 06461

CAD no. DCS project no. OSCGR project no.



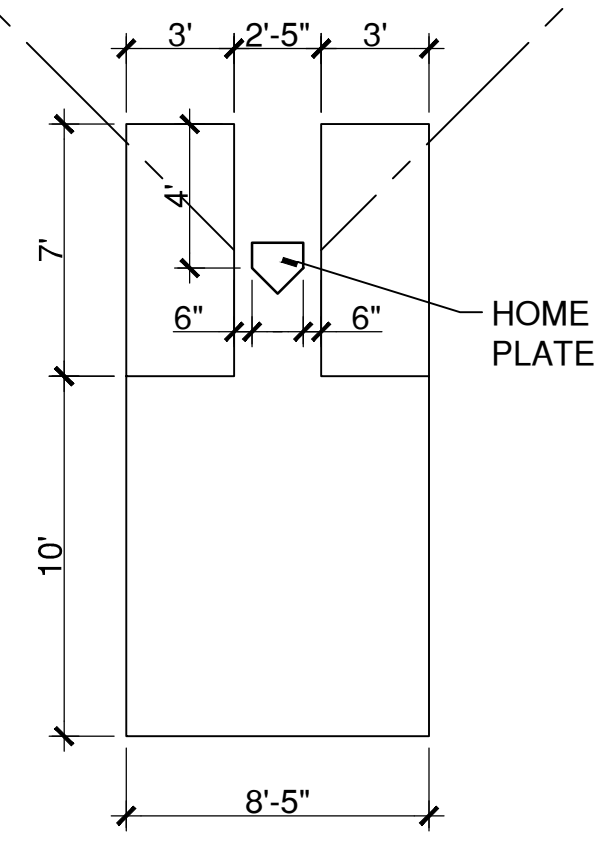
Z:\2017004\CONDOCC\Details\17004L-503.dwg August 29, 2019 - 11:43 AM



NOTE  
INSTALL GROUND ANCHORS AND  
PLATE IN CONCRETE IN ACCORDANCE  
WITH THE MANUFACTURER'S  
INSTALLATION INSTRUCTIONS.

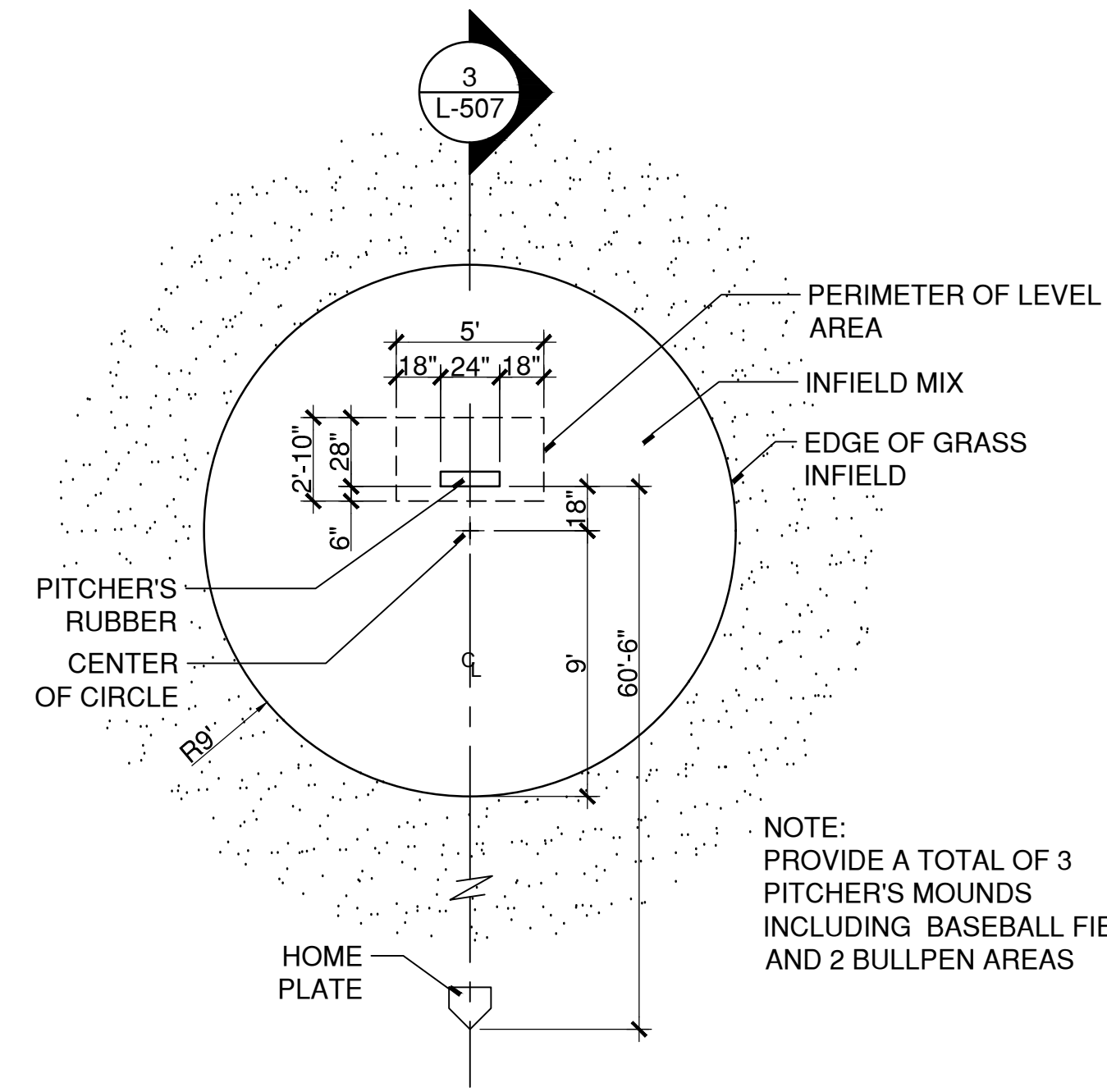
**7** PLACEMENT OF BASES  
SCALE: NO SCALE

Z:\2017004\CONDOC\Details\bases.dwg



**8** SOFTBALL BATTER'S BOX  
SCALE: 3/16"=1"

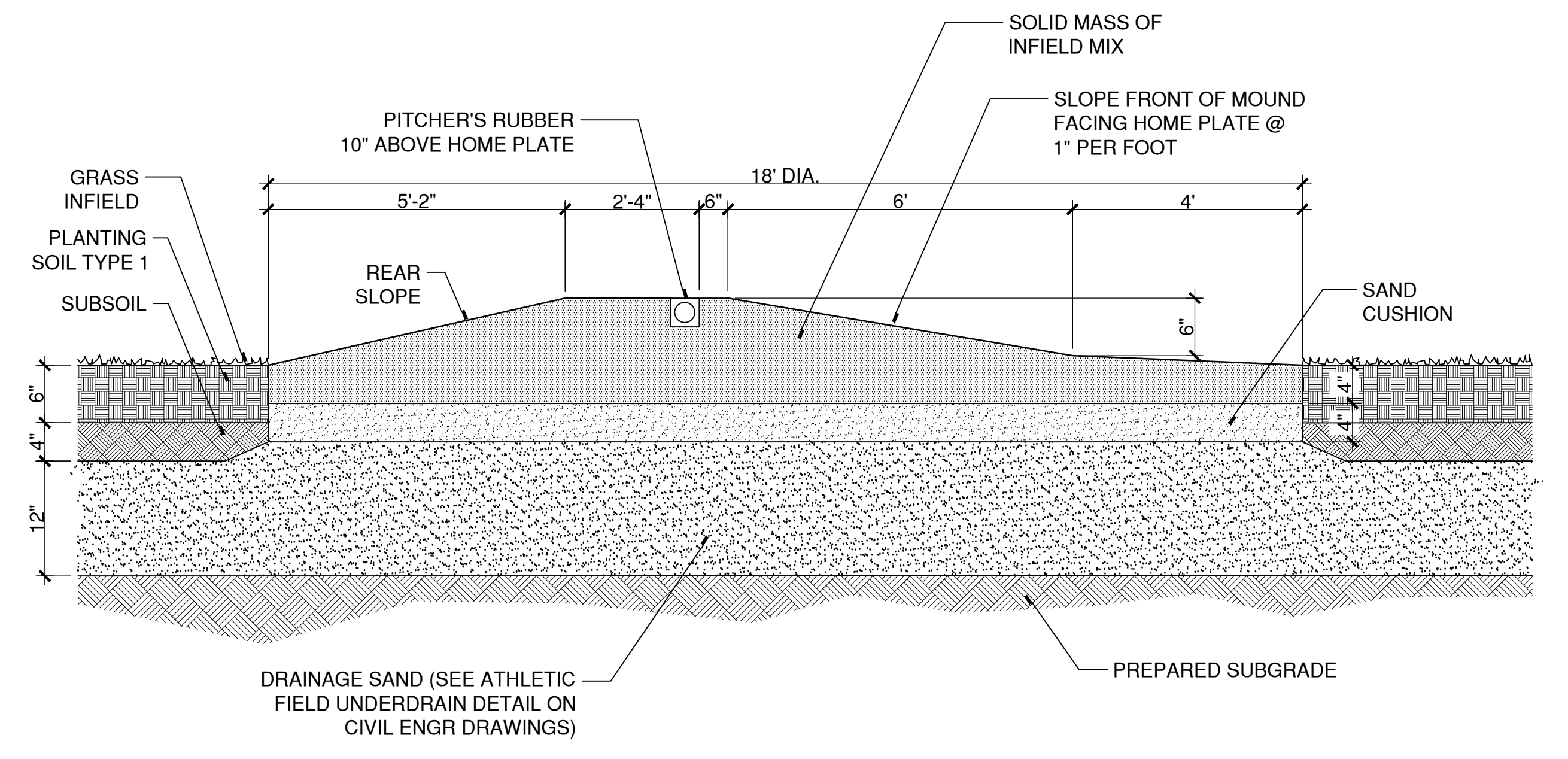
Z:\2017004\CONDOC\Details\batters box.dwg



NOTE:  
PROVIDE A TOTAL OF 3  
PITCHER'S MOUNDS  
INCLUDING BASEBALL FIELD  
AND 2 BULLPEN AREAS

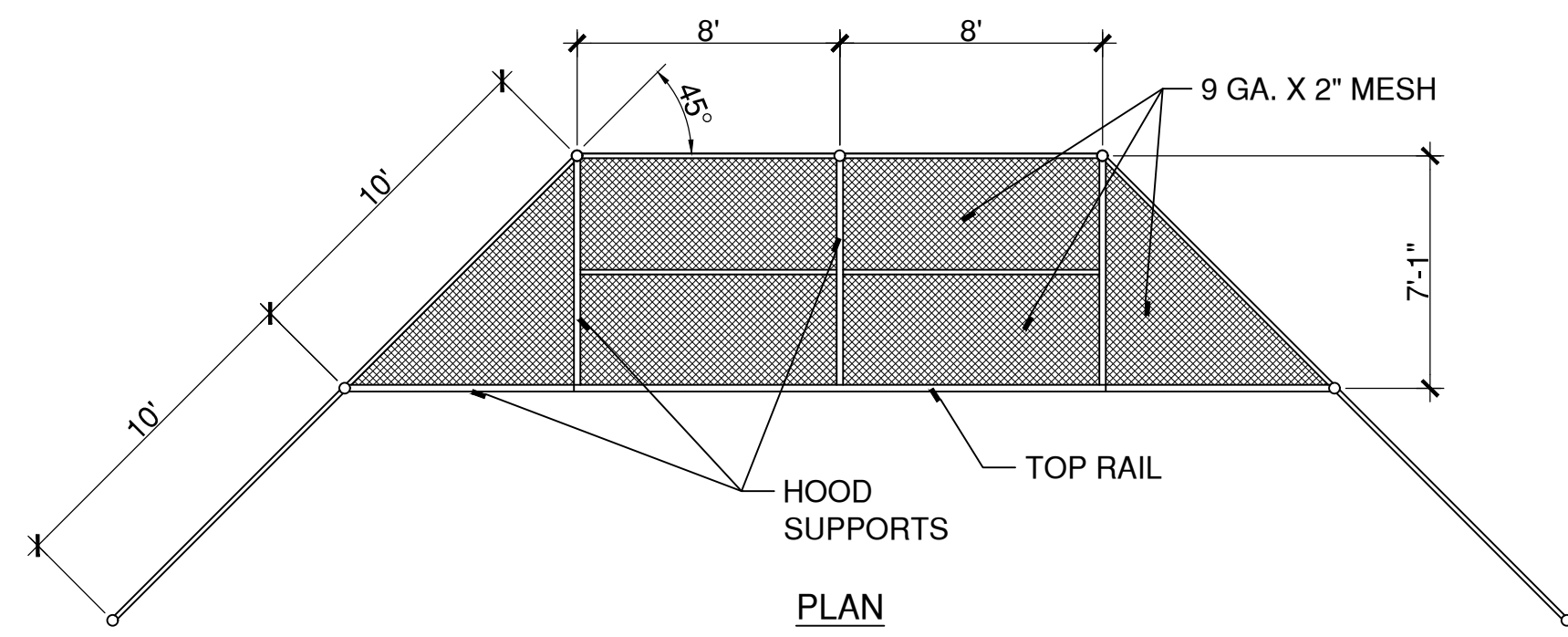
**4** BASEBALL PITCHER'S MOUND  
SCALE: 3/16"=1"

Z:\2017004\CONDOC\Details\pitchers mound.dwg

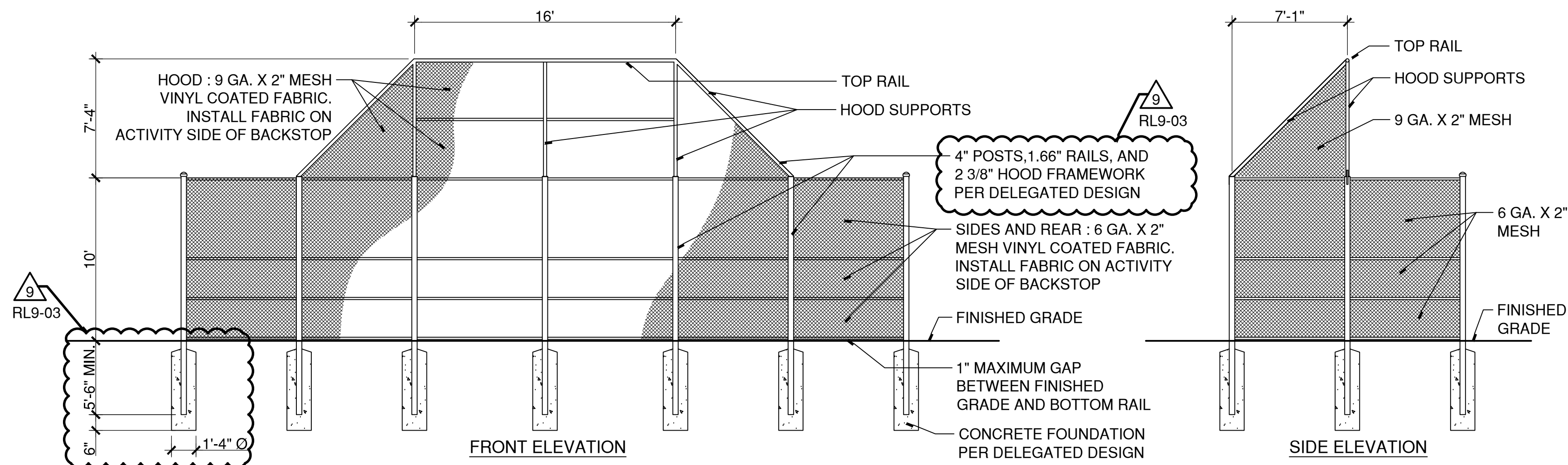


**3** BASEBALL PITCHER'S MOUND SECTION  
SCALE: 1/2"=1' (H) x 1"=1' (V)

Z:\2017004\CONDOC\Details\pitchers mound section.dwg



PLAN

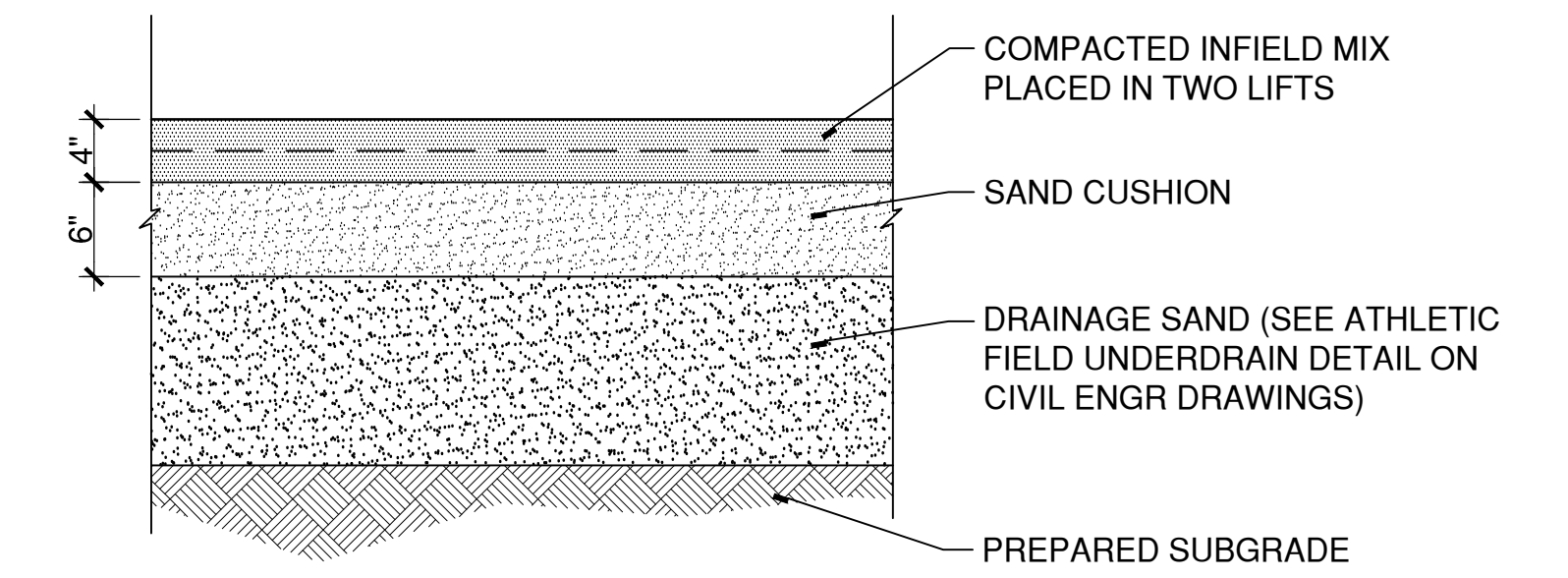


FRONT ELEVATION

SIDE ELEVATION

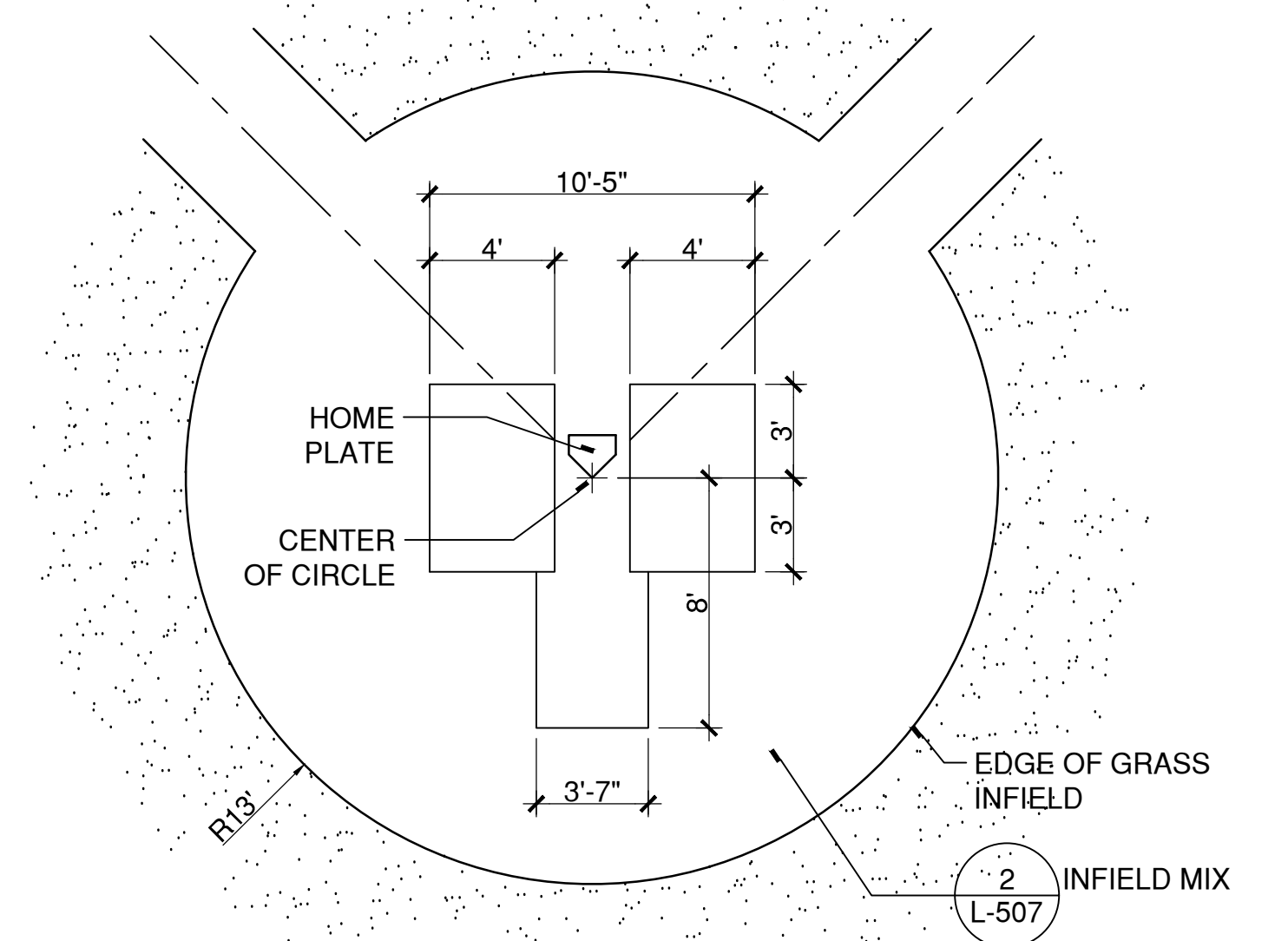
**6** SOFTBALL BACKSTOP  
SCALE: 3/16"=1"

Z:\2017004\CONDOC\Details\softball backstop.dwg



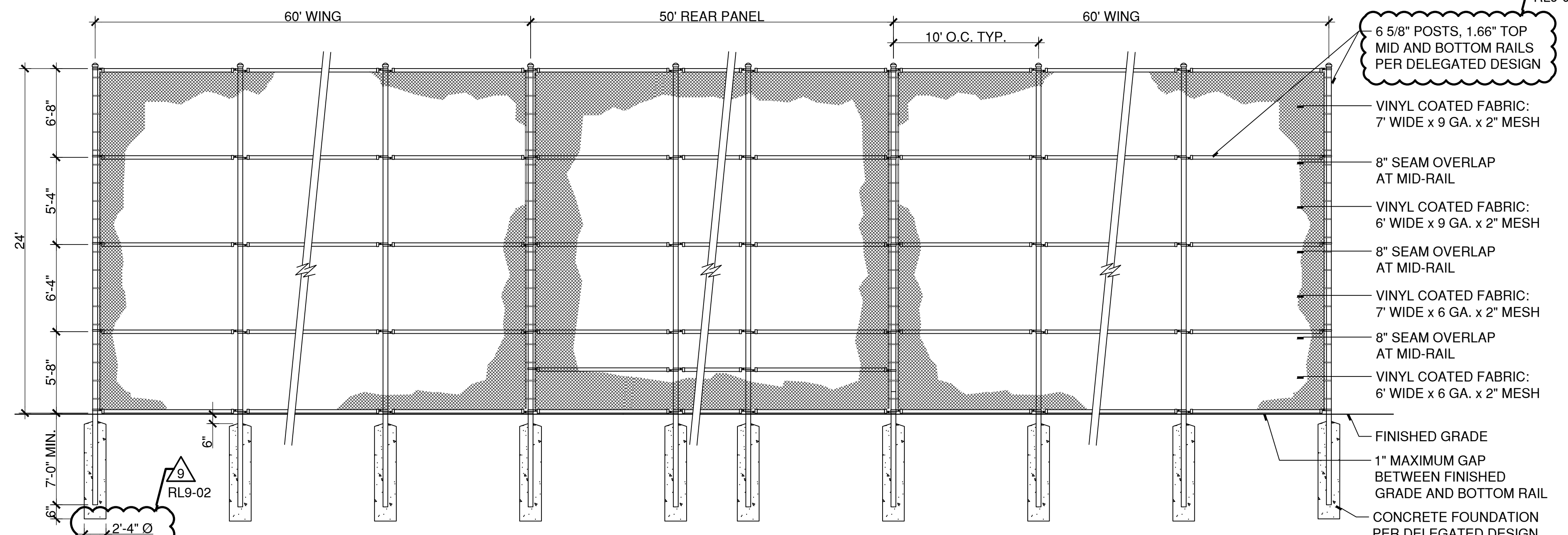
**2** SKINNED INFIEL  
SCALE: 1"=1'

Z:\2017004\CONDOC\Details\skinned infield.dwg



**1** BASEBALL BATTER'S BOX  
SCALE: 3/16"=1"

Z:\2017004\CONDOC\Details\batters box.dwg



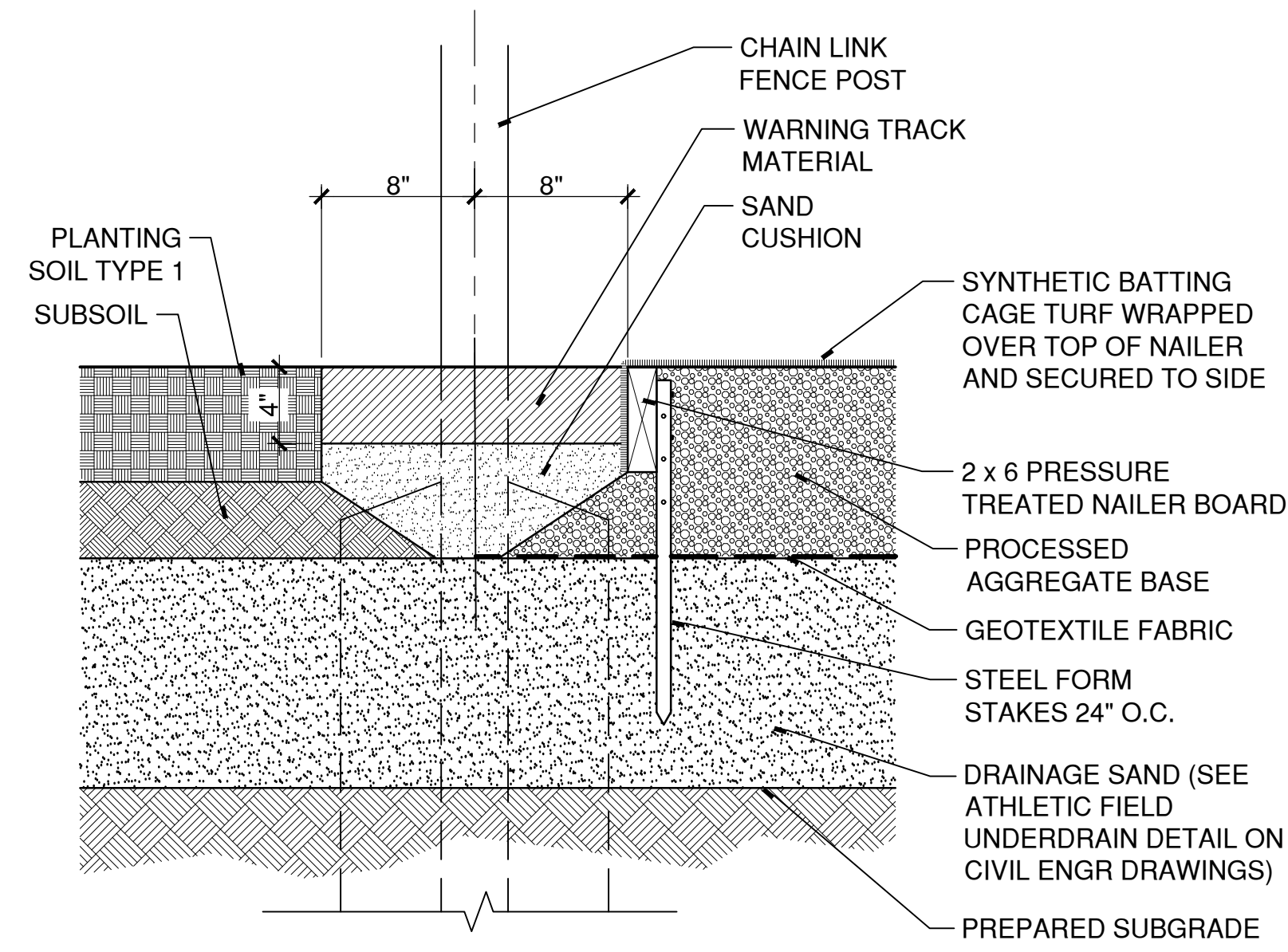
**5** BASEBALL BACKSTOP  
SCALE: 3/16"=1"

Z:\2017004\CONDOC\Details\baseball backstop.dwg

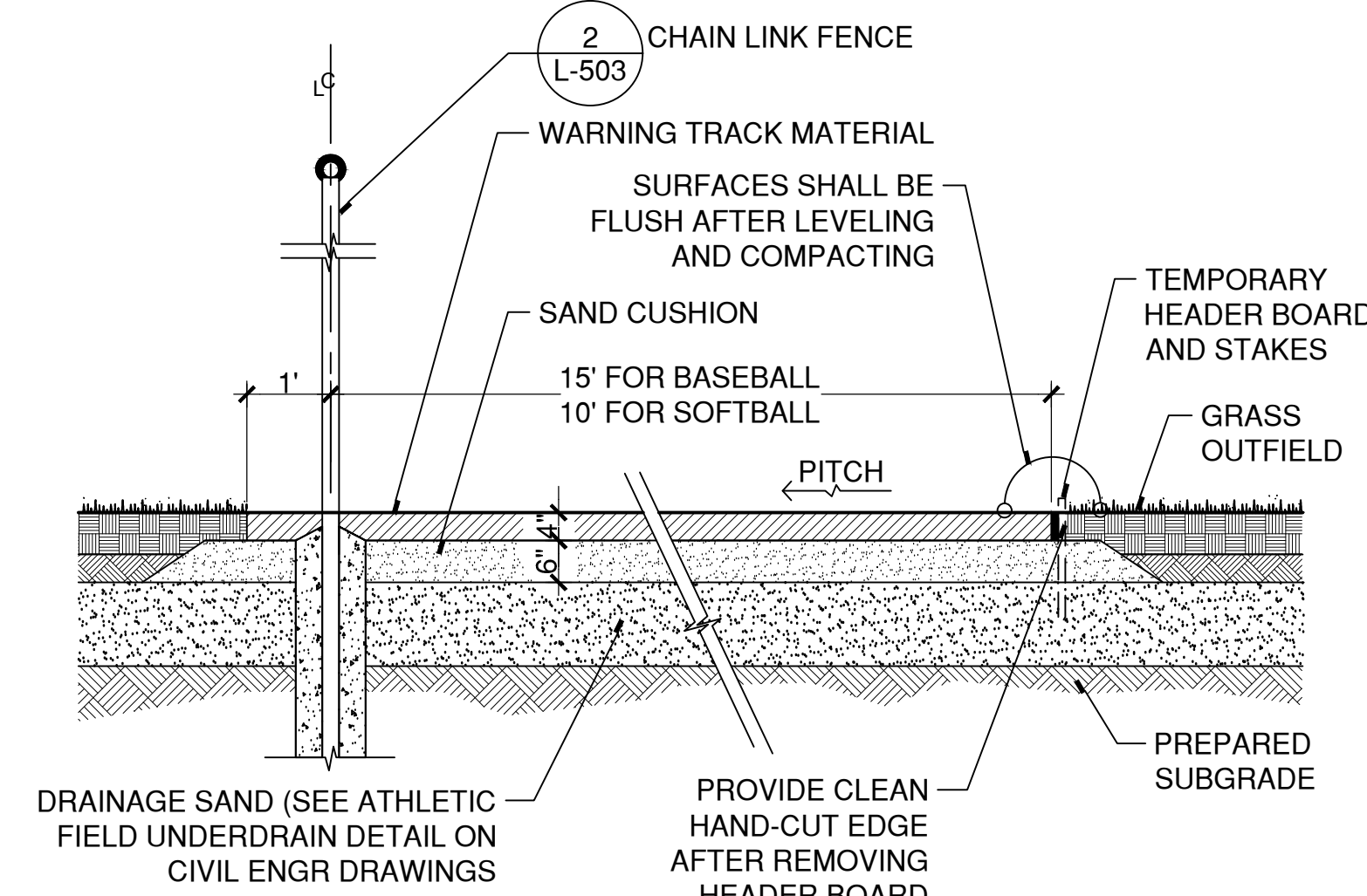
100% CONSTRUCTION DOCUMENTS			STATE OF CONNECTICUT DEPARTMENT OF ADMINISTRATIVE SERVICES	
drawing title SITE DETAILS			drawing prepared by <b>RICHTER &amp; CEGAN INC.</b> 560 CANAL COURT BOX 877 AVON, CT 06001	date <b>05/24/2019</b>
REVISIONS			scale <b>AS NOTED</b>	drawn by <b>JMM</b>
mark	date	description	project <b>PLATT TECHNICAL HIGH SCHOOL</b> 560 Orange Avenue Middletown, CT 06461	approved by <b>MAC</b>
9	8/29/2019	Addendum #9	CAD no.	Drawing no. <b>L-507</b>
			DCS project no. B1-RT-079 CM-R	OSCRG project no. 900-0013



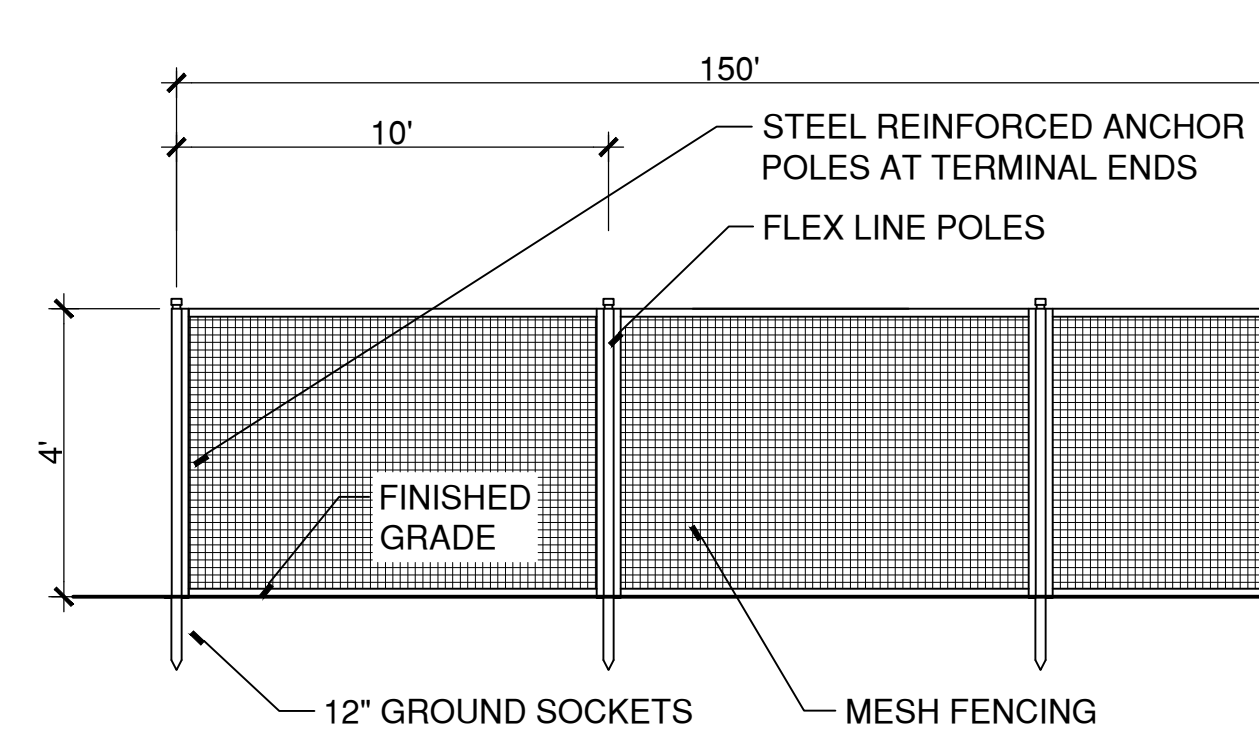




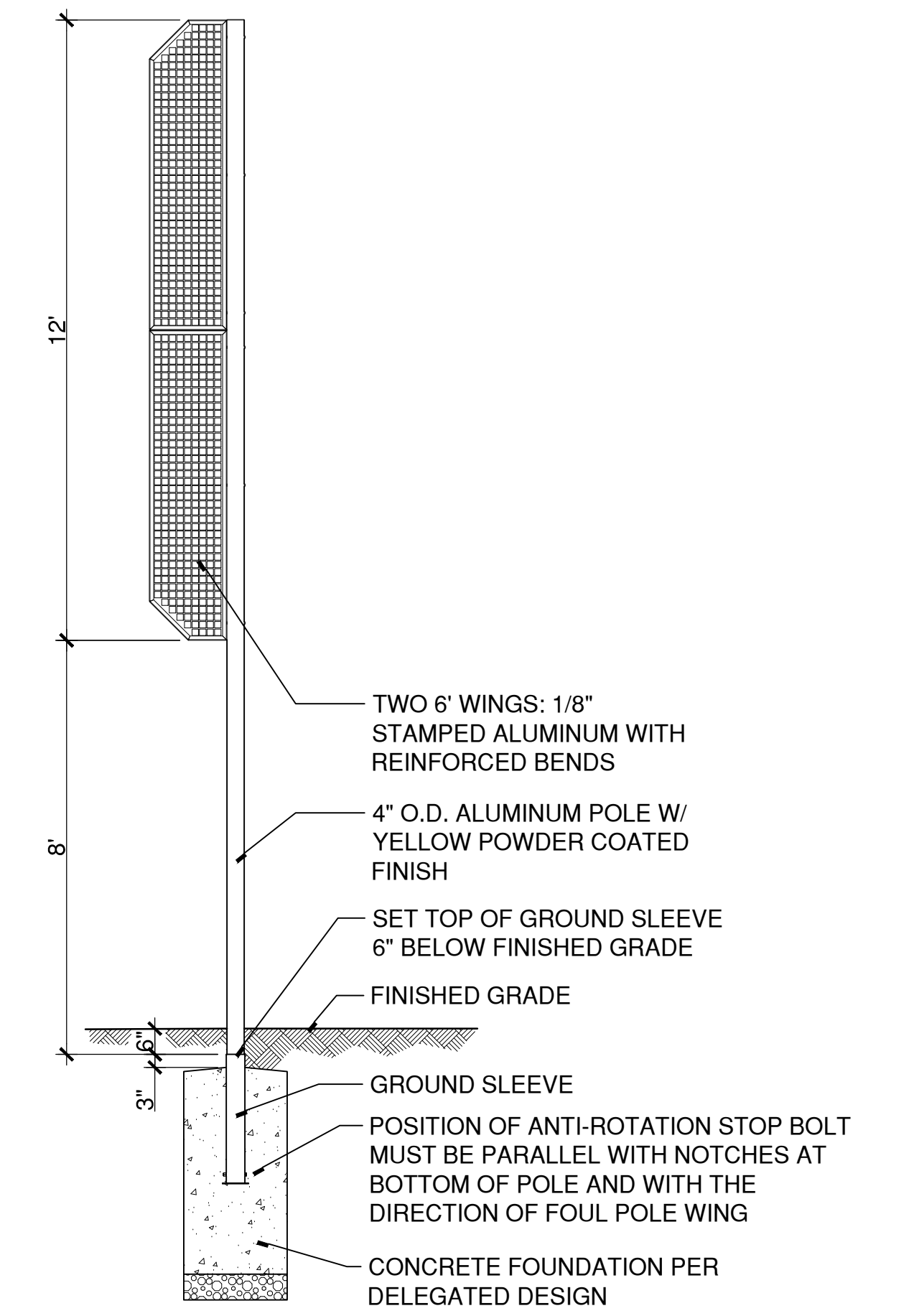
**6** **BATTING CAGE TURF EDGE**  
SCALE: 1 1/2"=1'  
Z:\2017004\4CONDOCC\Details\synrturf edgs.dwg



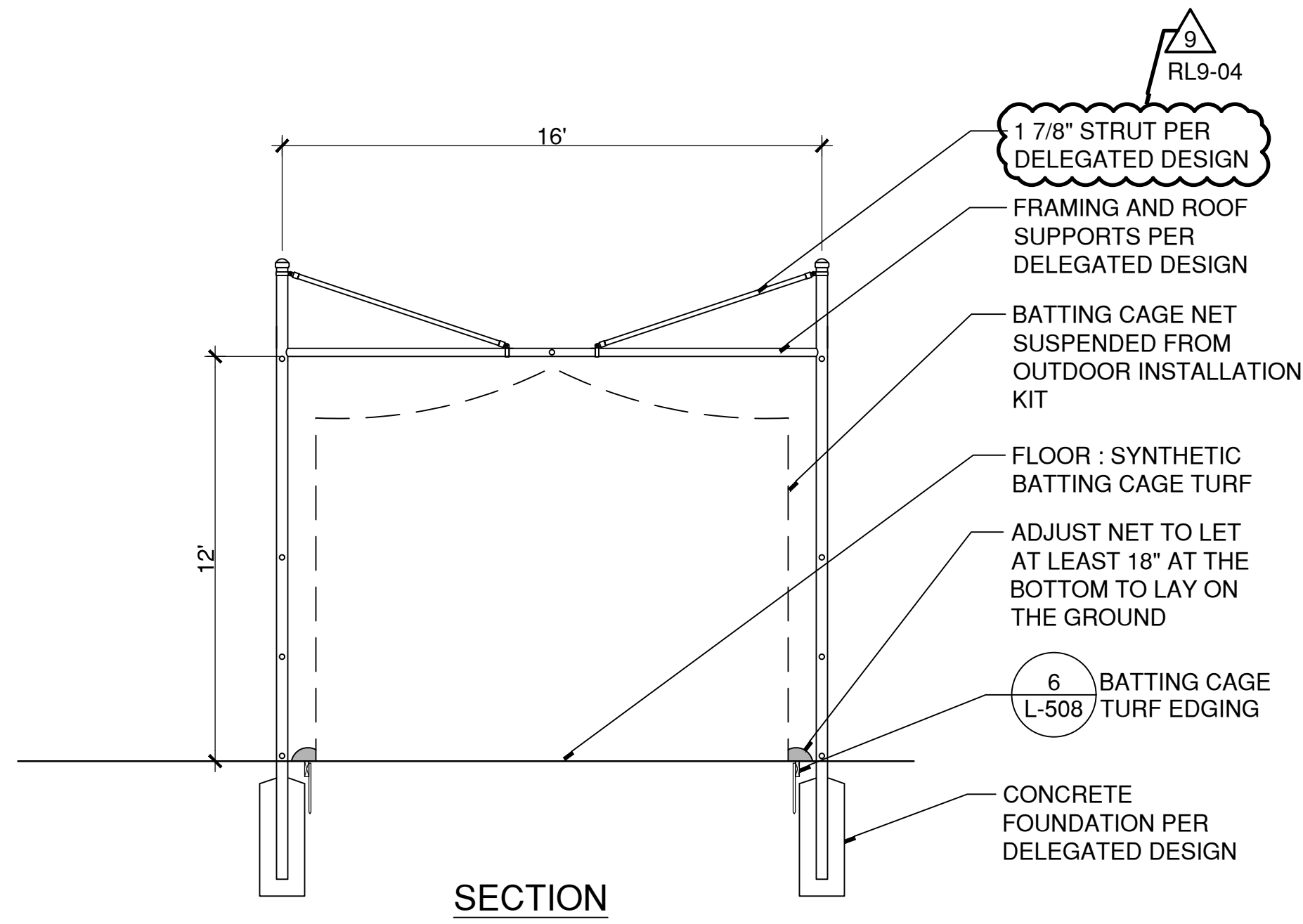
**4** **WARNING TRACK**  
SCALE: 1/2"=1'  
Z:\2017004\4CONDOCC\Details\warning track.dwg



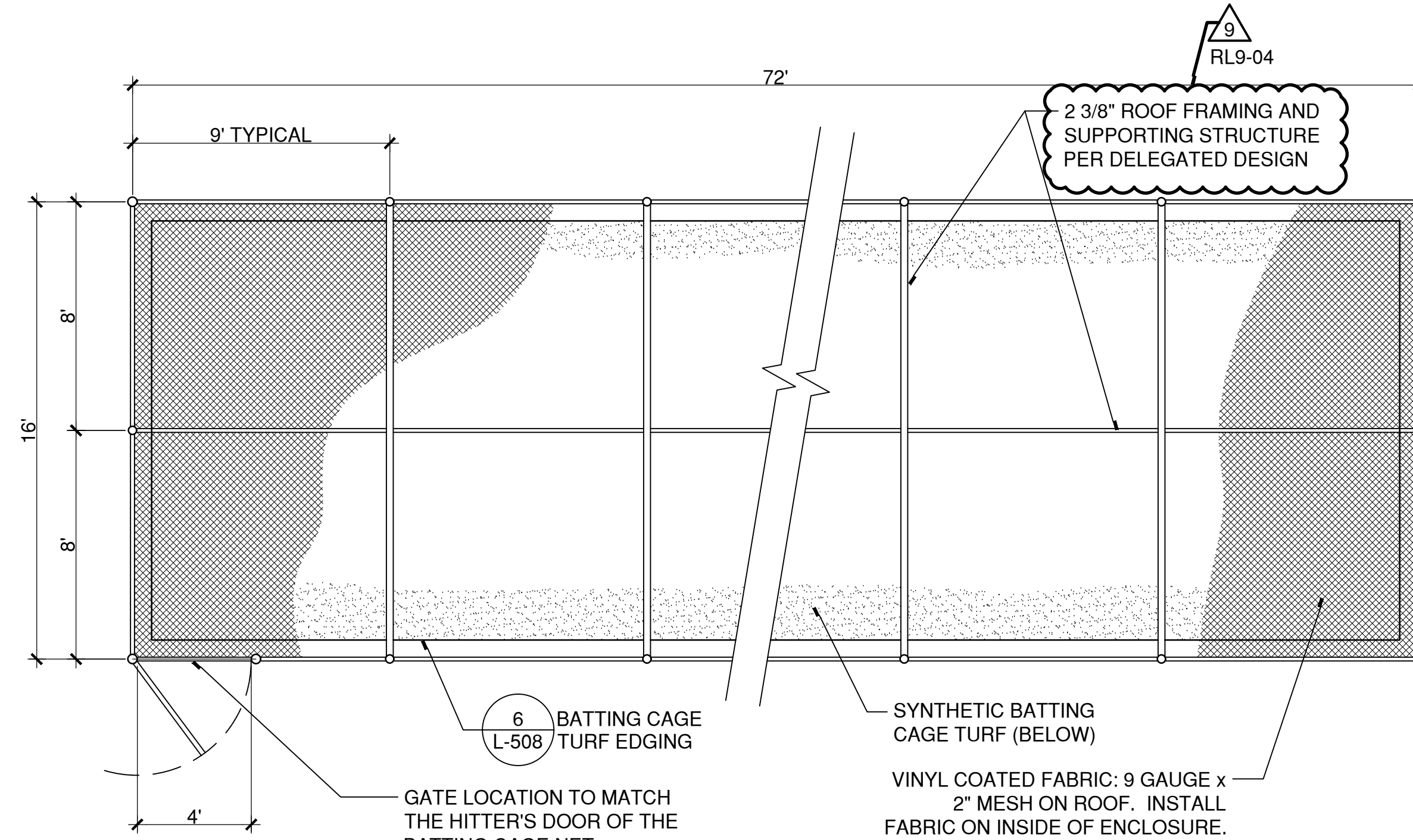
**3** **PORTABLE OUTFIELD FENCE**  
SCALE: NO SCALE  
Z:\2017004\4CONDOCC\Details\portable fence.dwg



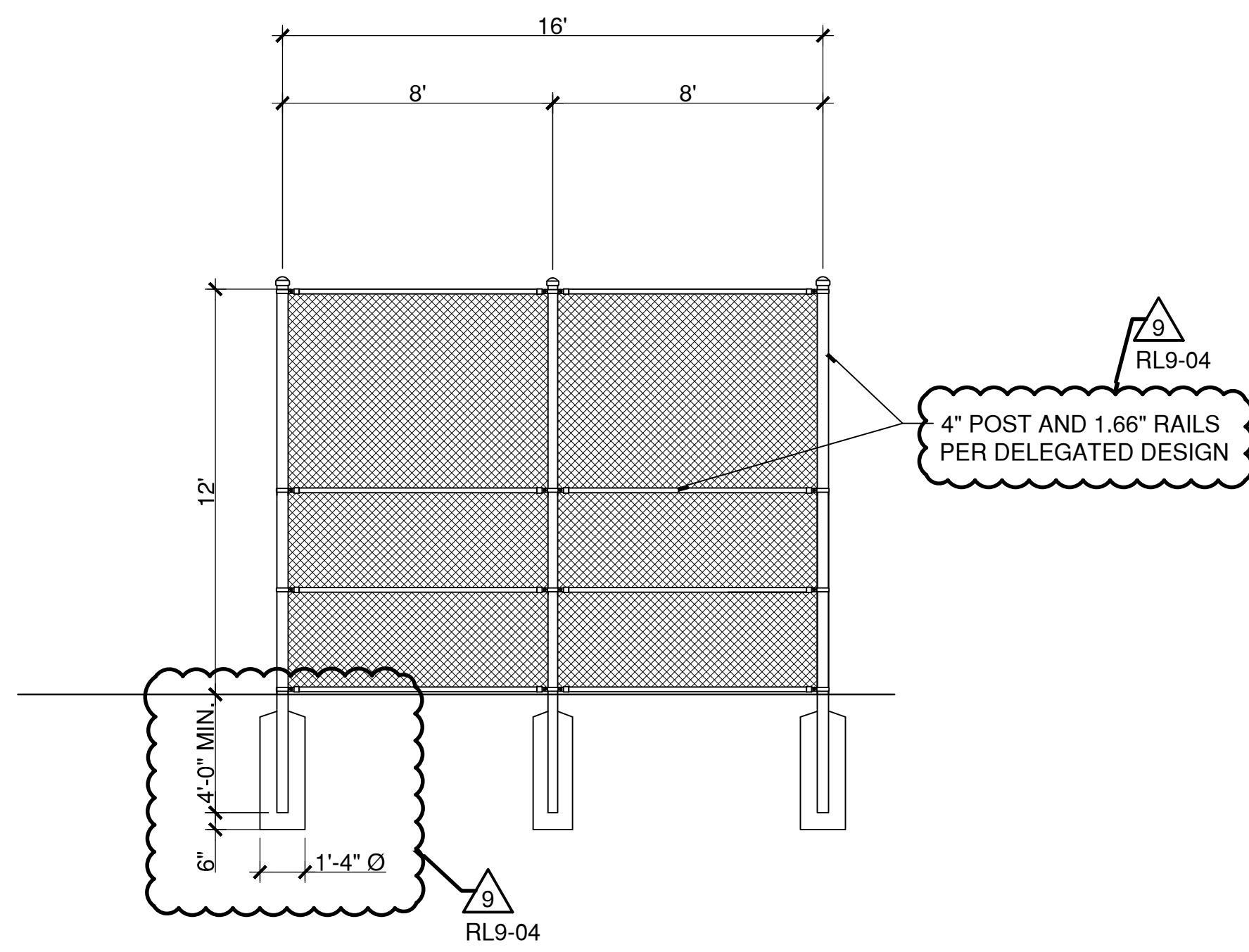
**2** **FOUL POLE**  
SCALE: 3/8"=1'  
Z:\2017004\4CONDOCC\Details\foul pole.dwg



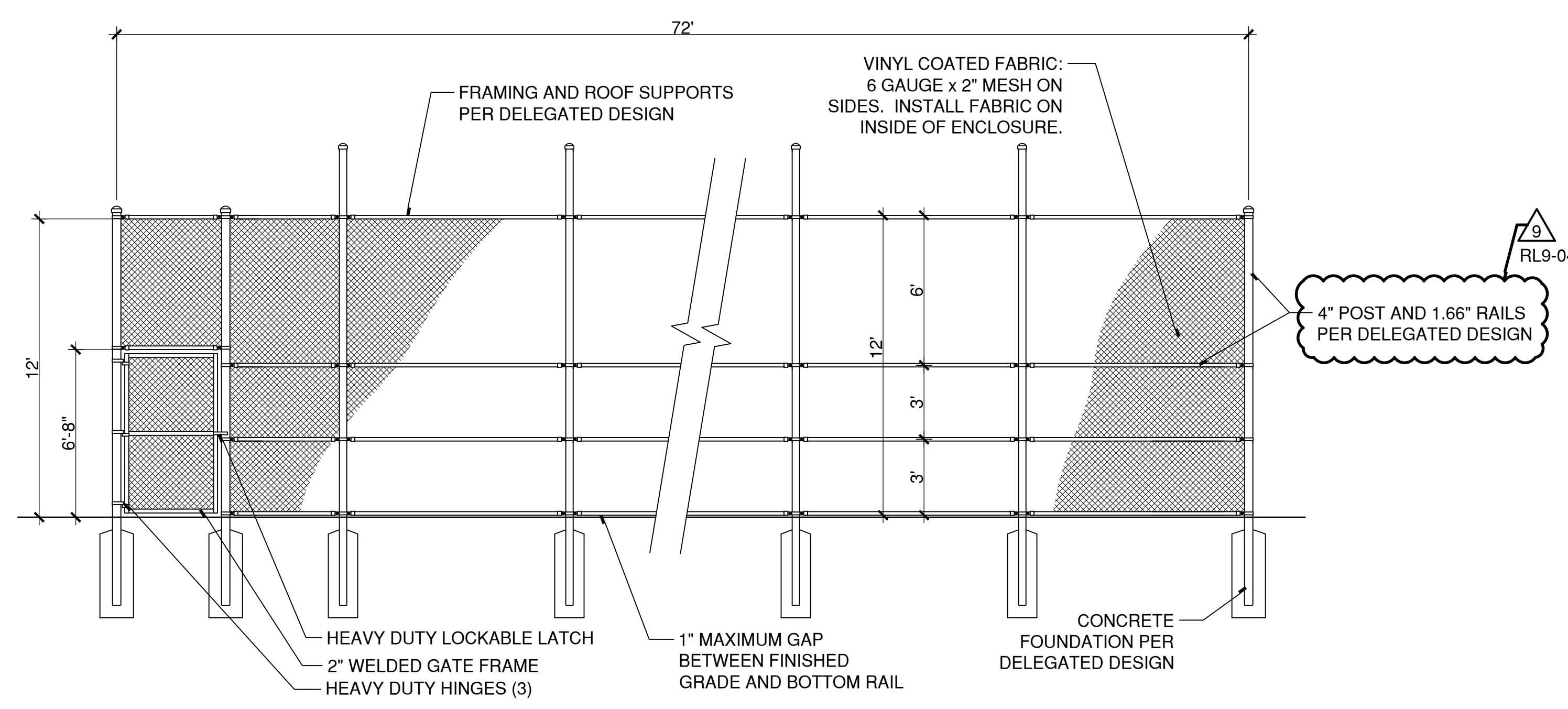
SECTION



PLAN

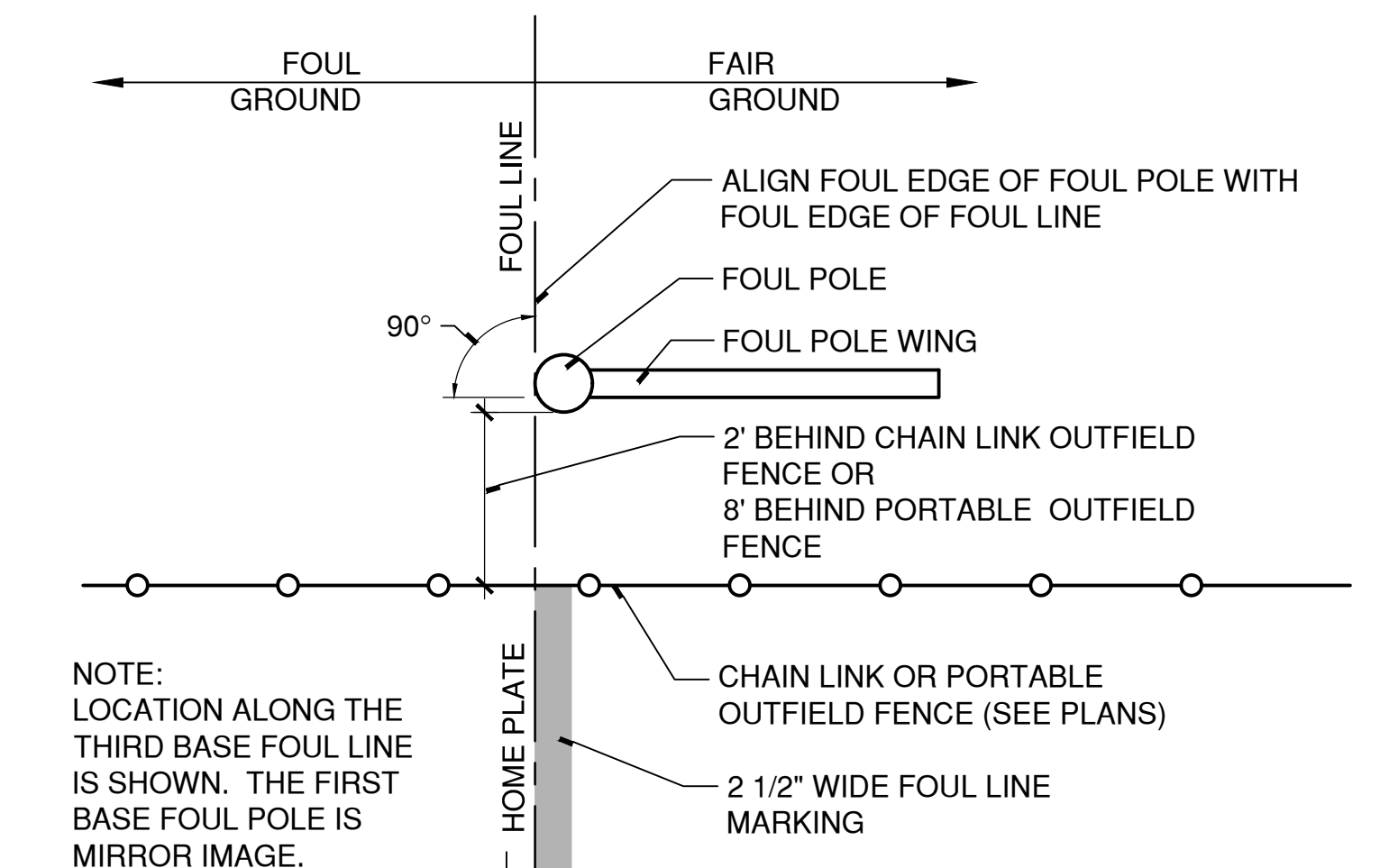


END ELEVATION



SIDE ELEVATION

**5** **BATTING CAGE**  
SCALE: 1/4"=1'  
Z:\2017004\4CONDOCC\Details\batting cage.dwg



**1** **FOUL POLE PLACEMENT**  
SCALE: NO SCALE  
Z:\2017004\4CONDOCC\Details\foul pole placement.dwg

Z:\2017004\4CONDOCC\Details\17004L-508.dwg August 29, 2019 - 11:48 AM



100% CONSTRUCTION DOCUMENTS		STATE OF CONNECTICUT DEPARTMENT OF ADMINISTRATIVE SERVICES	
drawing title <b>SITE DETAILS</b>		drawing prepared by <b>RICHTER &amp; CEGAN INC.</b>	
REVISIONS		date <b>05/24/2019</b>	
mark	date	description	scale <b>AS NOTED</b>
9	8/29/2019	Addendum #9	drawn by <b>JMM</b>
project <b>PLATT TECHNICAL HIGH SCHOOL</b>		approved by <b>MAC</b>	
CAD no.		DCS project no. <b>BS-RT-079 CM-R</b>	OSCRG project no. <b>900-0013</b>
		drawing no. <b>L-508</b>	