

UConn HEALTH

CT TOWER FLOOR-1 FINISH IMPROVEMENTS PROJECT NO. 18-029

PREPARED BY:
DEPARTMENT OF CAMPUS PLANNING, DESIGN AND CONSTRUCTION
UConn HEALTH

DRAWING INDEX		BUILDING CODE AND FIRE RESISTANCE NOTES		
DWG. NO.	DRAWING TITLE			
A-1	PHASING / BARRIER PLANS A-1.0 THROUGH A-1.12	BUILDING CODE REVIEW: 2015 AND 2017 ADOPTED VERSIONS OF INTERNATIONAL CODES AS AMENDED AND ADOPTED BY THE 2018 CONNECTICUT STATE BUILDING CODE – INCLUDING; 2015 NFPA 101 LIFE SAFETY CODE 2009 ANSI A117.1 ACCESSIBLE AND USABLE BUILDINGS AND FACILITIES PROJECT TYPE: INTERIOR FINISH UPGRADES BUILDING CONSTRUCTION TYPE: IA FIRE PROTECTION: FULLY SPRINKLERED FIRE ALARM SYSTEM PROJECT OCCUPANCY: I2 INSTITUTIONAL		
A-2	FLOOR FINISH PLAN			
A-3	FLOOR CONSTRUCTION PLAN			
.	.	FINAL CONSTRUCTION DOCUMENTS	5/15/19	.
NO	SYM	DESCRIPTION	DATE	APPV'D
ISSUE DATE				

PHASING NOTES

REFER TO DRAWINGS A-1.1 THROUGH AND A-1.12 FOR ILLUSTRATED PHASED AREA PLANS

PHASING

GENERAL

THE PREMISE OF THE PHASING PLAN ILLUSTRATED THROUGHOUT THIS DOCUMENT TAKES INTO ACCOUNT THE FOLLOWING PARAMETERS;

- THE PHASED AREA OF WORK SHALL BE EVACUATED DURING THE REFINISHING OPERATIONS. SINGLE DAY PHASES MAY PROCEED ON WEEKDAY DAYS BETWEEN 7AM AND 6PM MONDAY THROUGH THURSDAY. MULTIPLE DAY PHASES SHALL START ON A MONDAY OF THAT WEEK AND BE COMPLETED BY THE END OF THE DAY ON THURSDAY.
- THE PHASED AREA SHALL DISRUPT A MAXIMUM OF 3-PATIENT ROOMS PER PHASE AND THE WORK OF EACH SINGLE DAY PHASE SHALL BE COMPLETED AND TURNED OVER FOR PATIENT USE / OCCUPANCY BY 6PM OF THAT GIVEN DAY.
- EACH PHASED AREA INCLUDES A SQUARE FOOT AREA QUANTITY. THIS AREA IS APPROXIMATE AND AS SUCH THE CONTRACTOR SHALL BE RESPONSIBLE FOR ANY AND ALL FIELD VERIFICATION OF THE ACTUAL SITE CONDITION.

SPECIFIC




ROOM H1038 IS A PATIENT MEDICATION DISPENSING ROOM. THE CONTRACTOR SHALL DURING THE PHASED WORK EFFECTING ACCESS TO THIS ROOM;

- WORK WITH THE UCHC PROJECT MANAGER AND THE UNIT NURSE MANAGER TO DEVELOP MEANS AND METHODS FOR STAFF AND PATIENT PATIENT ACCESS TWICE DURING THE PHASED TIMEFRAME FOR THE PURPOSE OF DISPENSING MEDICATIONS.

PHASED BARRIER CONTAINMENT LEGEND AND NOTES

REFER TO DRAWINGS A-1.1 THROUGH AND A-1.12 FOR ILLUSTRATED PHASED AREA PLANS

LEGEND

-  TYPE-C ENVIRONMENTAL CONTROL BARRIER
-  ROOM DOORS TO BE CLOSED AND SEALED UNLESS USED FOR SET-UP AND RUNNING OF NEGATIVE PRESSURE MACHINE.
-  APPROX LOCATION/DIRECTION FOR NEGATIVE AIR PRESSURE EXHAUST. CONTRACTOR TO ESTABLISH PLASTIC DOOR AND WINDOW PLUG TO CONTROL DUST MIGRATION AND TO PROTECT AGAINST EXTERIOR ELEMENTS / COLD WEATHER FROM ENTERING THE BUILDING

BARRIER PLAN

GENERAL

THE CONTRACTOR SHALL BE REQUIRED TO WORK IN AREAS IN OR ADJACENT TO CRITICAL PATIENT CARE ACTIVITIES. AS A RESULT, THE CONTRACTOR, SHALL BE RESPONSIBLE TO PROVIDE EFFECTIVE MEANS AND METHODS BASED ON THE INFORMATION CONTAINED HEREIN TO ENSURE THAT THE ENVIRONMENT FOR PATIENT CARE IS FULLY MAINTAINED.

PRIOR TO BEGINNING ANY PHASED WORK, THE CONTRACTOR SHALL REVIEW INSTALLATION OF ENVIRONMENTAL CONTROL MEASURES WITH THE UCHC REPRESENTATIVE AND INFECTION CONTROL SPECIALIST.

WORK OCCURRING IN SUCH SPACES SHALL HAVE HEPA FILTERED NEGATIVE AIR PRESSURE FROM THE SURROUNDING OCCUPIED SPACES.

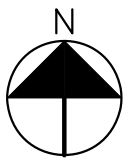
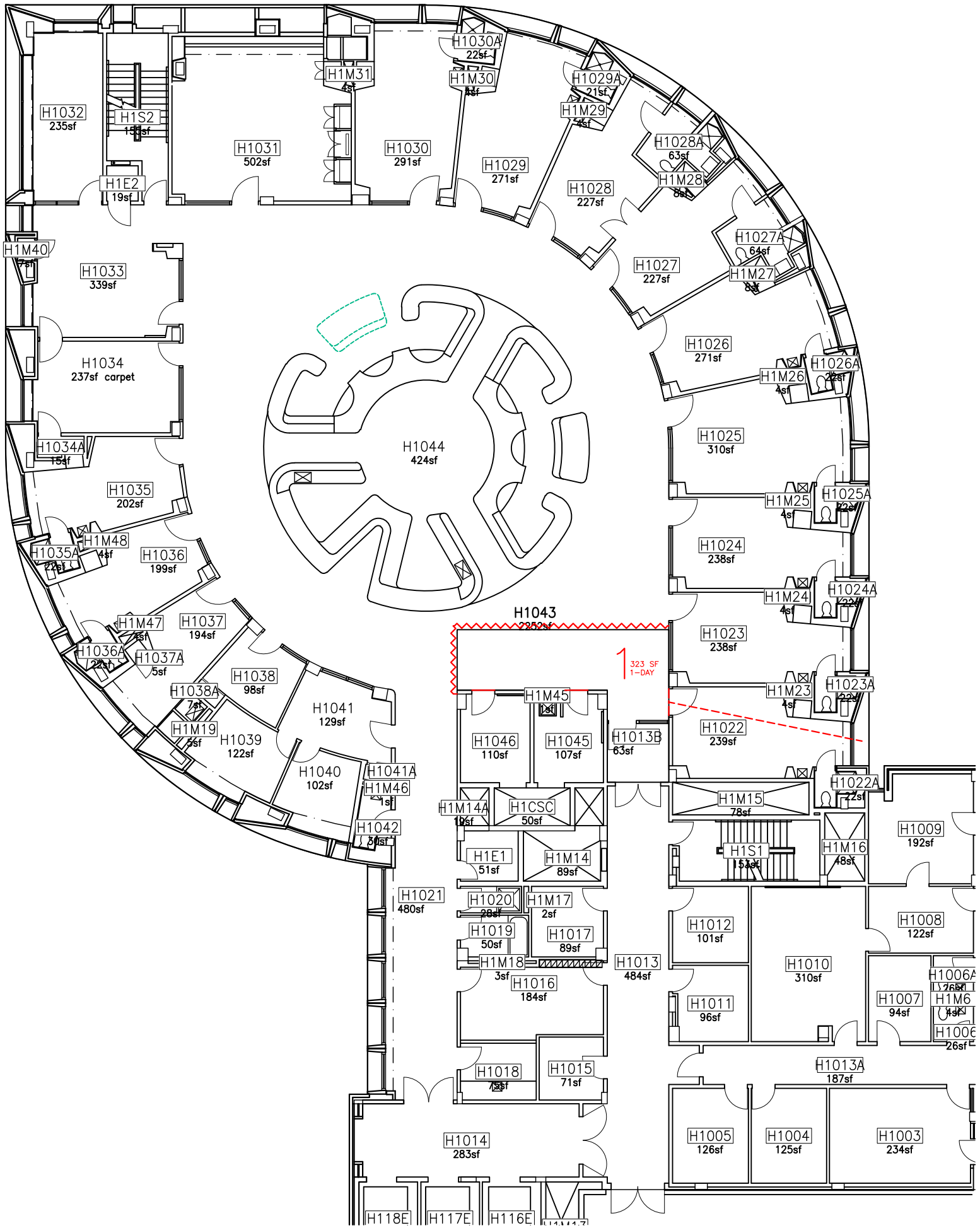
TEMPORARY BARRIERS SHALL BE AS INDICATED BELOW IN LOCATIONS NOTED ON THE PLANS.

TYPE-C

ENVIRONMENTAL CONTROL BARRIERS SHALL CONSIST OF: FIRE RATED POLYETHYLENE SUPPORTED BY A SERIES OF TELESCOPING ZIP POLES. ALL SEAMS AND EDGE INTERSECTIONS WITH EXISTING FLOOR, WALL AND CEILING MATERIALS SHALL BE SEALED WITH DUCT TAPE.


OPENINGS USED FOR AREA ACCESS FOR TYPE-C BARRIERS SHALL HAVE OVERLAP PROTECTION OF NOT LESS THAN 24" OF POLYETHYLENE OVERLAP.

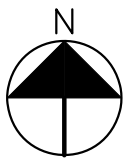
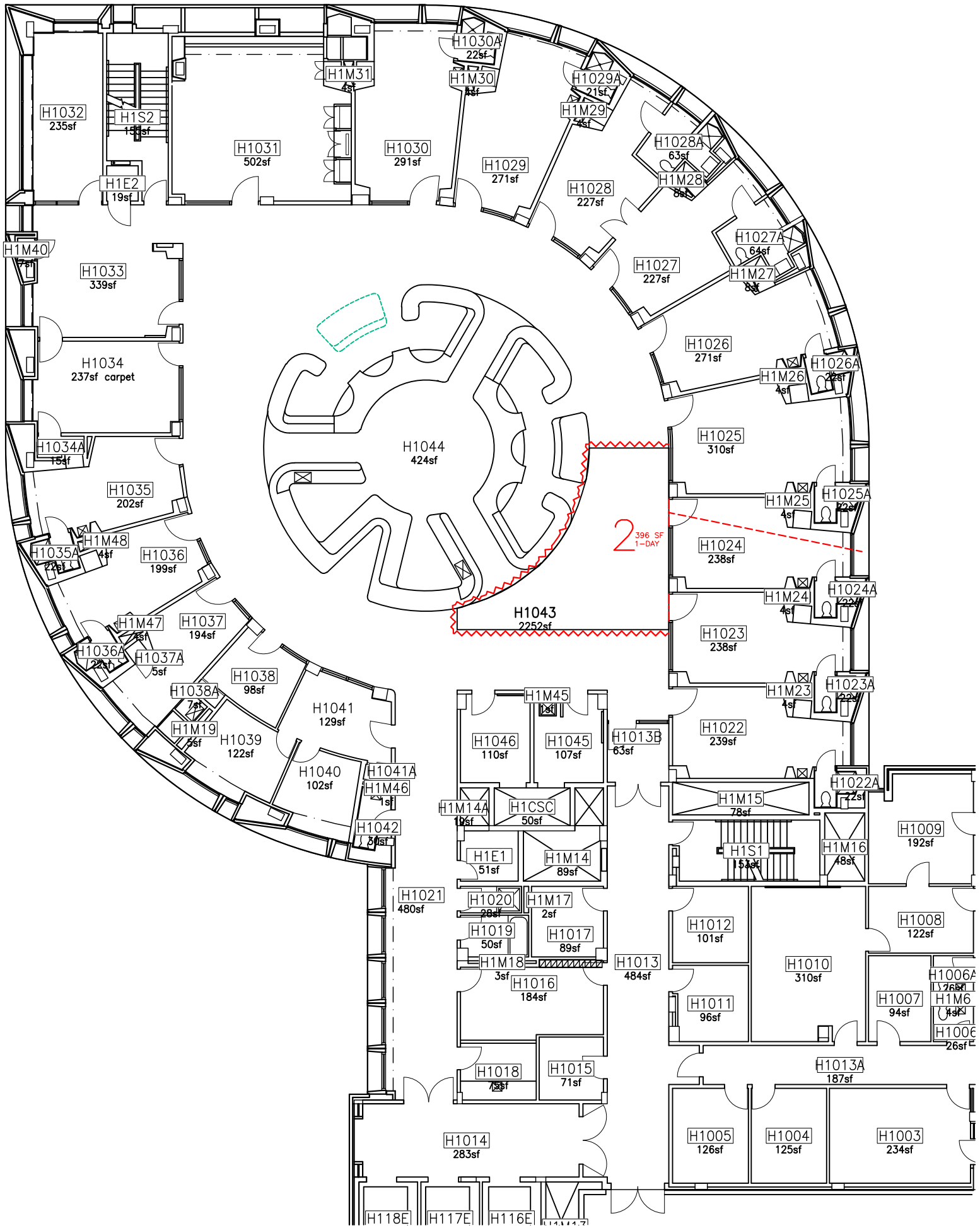
ISSUE DATE 5/15/19	PROJECT NO. 18-029	PROJECT NAME CT TOWER FLOOR-1 FINISH IMPROVEMENTS	 CAMPUS PLANNING, DESIGN AND CONSTRUCTION
DRAWING NO. A-1.0	DRAWN BY CMOSS	DRAWING TITLE PHASING NOTES / LEGEND	
	SCALE NOT TO SCALE		



PHASE-1 PLAN


REFER TO SHEET A-1.0 FOR LEGEND AND TYPICAL NOTES

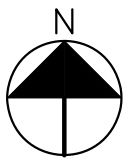
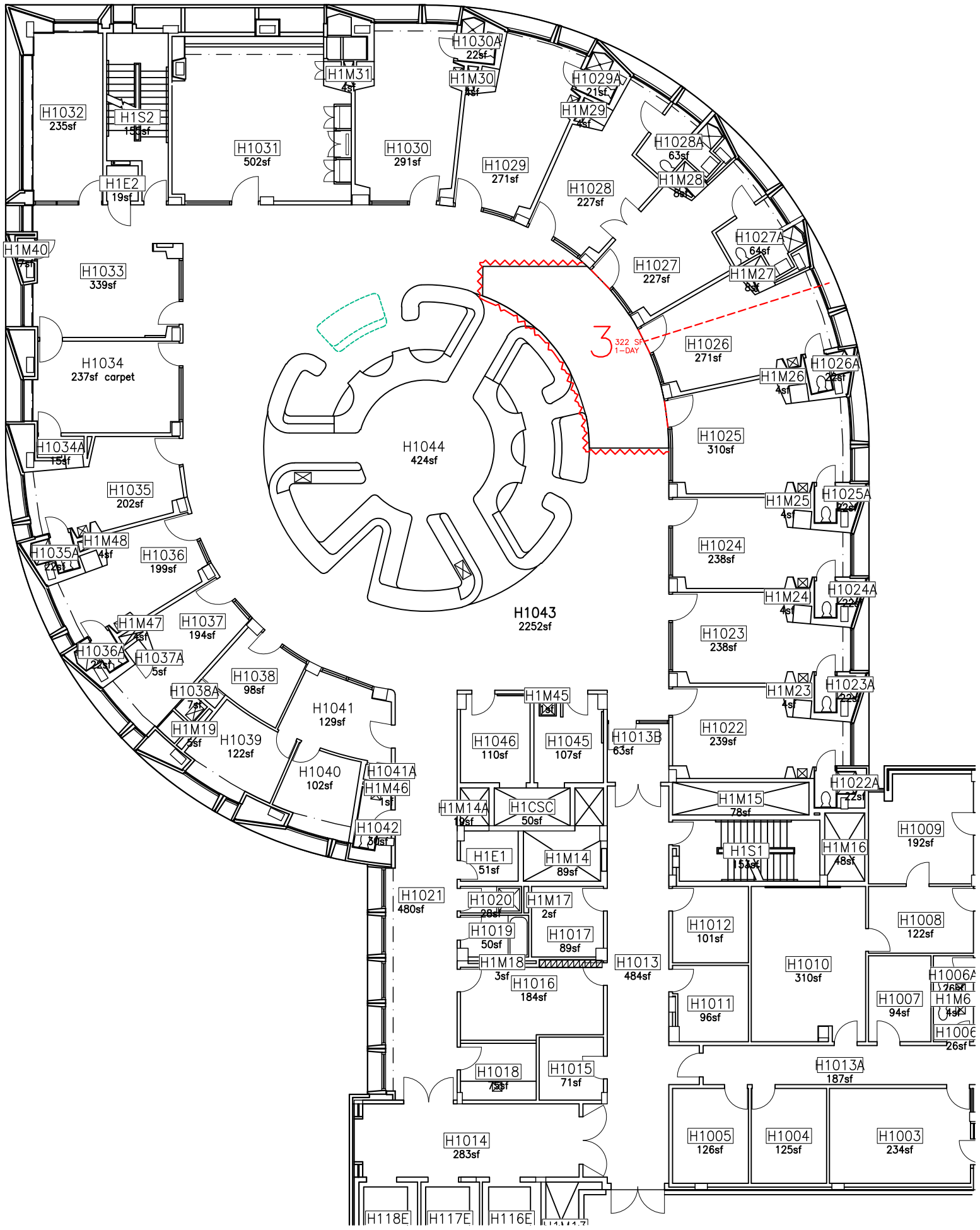
ISSUE DATE 5/15/19	PROJECT NO. 18-029	PROJECT NAME CT TOWER FLOOR-1 FINISH IMPROVEMENTS	 CAMPUS PLANNING, DESIGN AND CONSTRUCTION
DRAWING NO. A-1.1	DRAWN BY CMOSS	DRAWING TITLE FLOOR PHASING PLAN	
	SCALE NOT TO SCALE		



PHASE-2 PLAN


REFER TO SHEET A-1.0 FOR LEGEND AND TYPICAL NOTES

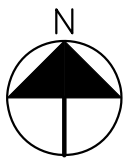
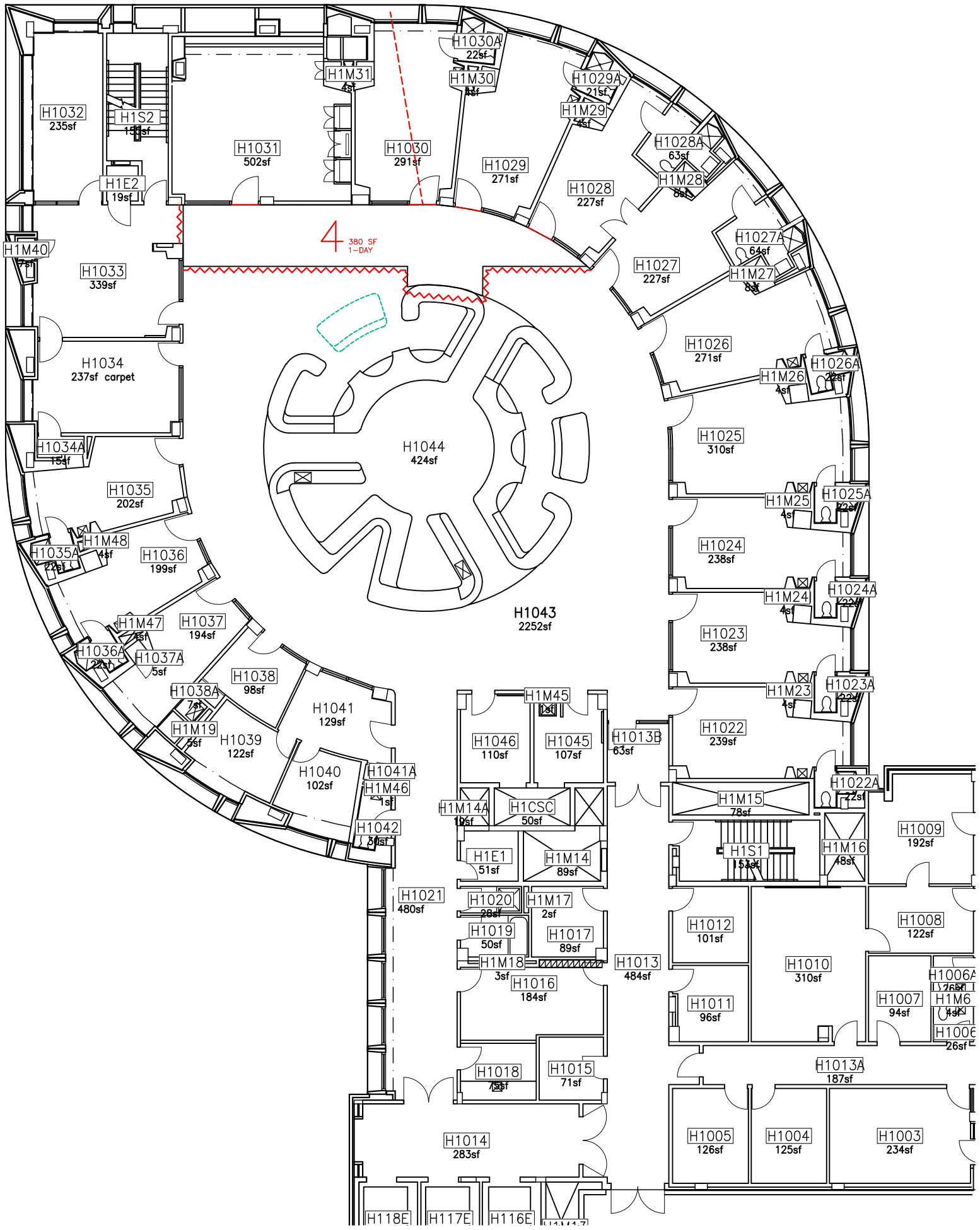
ISSUE DATE 5/15/19	PROJECT NO. 18-029	PROJECT NAME CT TOWER FLOOR-1 FINISH IMPROVEMENTS	 CAMPUS PLANNING, DESIGN AND CONSTRUCTION
DRAWING NO. A-1.2	DRAWN BY CMOSS	DRAWING TITLE FLOOR PHASING PLAN	
SCALE NOT TO SCALE			



PHASE-3 PLAN


REFER TO SHEET A-1.0 FOR LEGEND AND TYPICAL NOTES

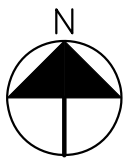
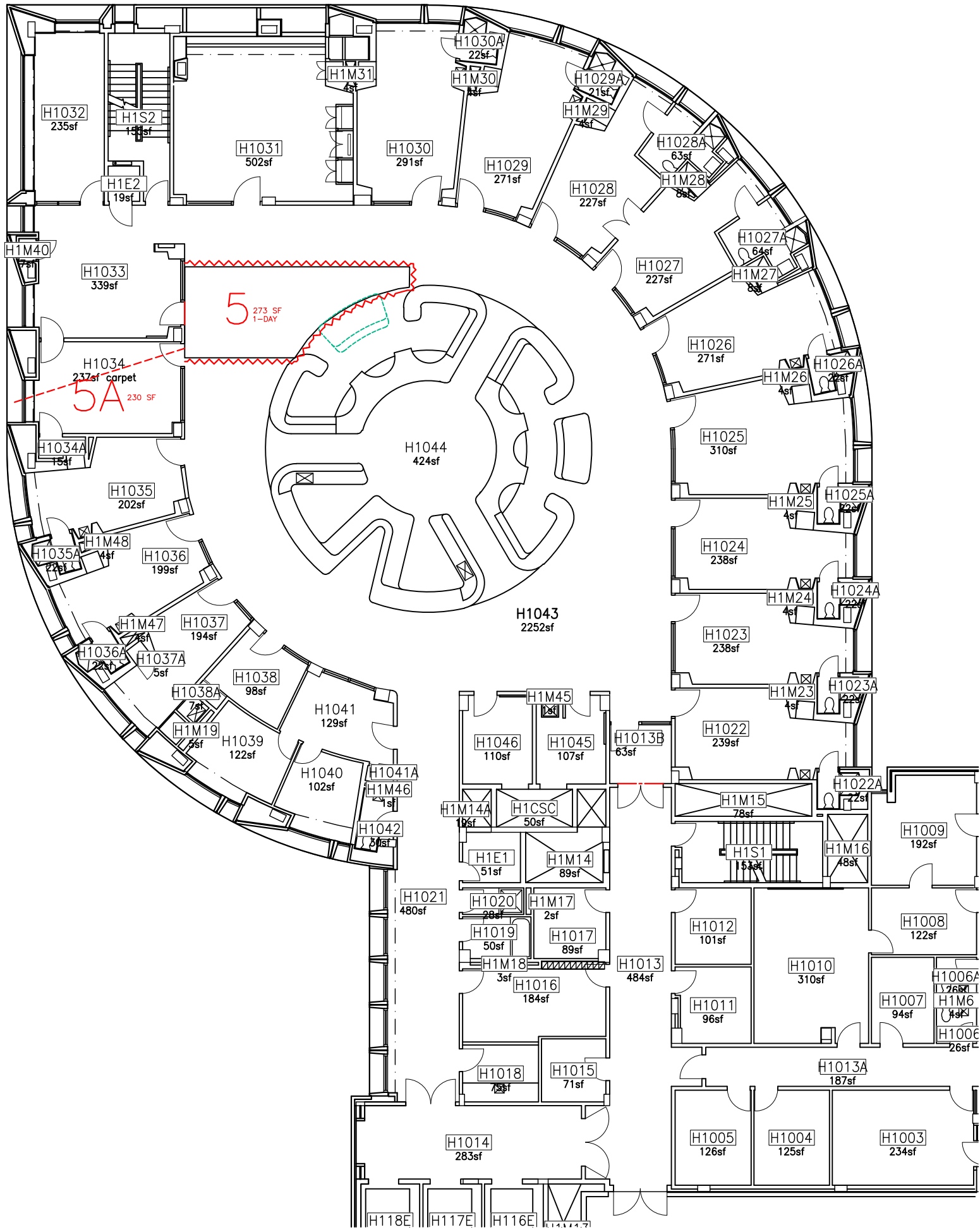
ISSUE DATE 5/15/19	PROJECT NO. 18-029	PROJECT NAME CT TOWER FLOOR-1 FINISH IMPROVEMENTS	 CAMPUS PLANNING, DESIGN AND CONSTRUCTION
DRAWING NO. A-1.3	DRAWN BY CMOSS	DRAWING TITLE FLOOR PHASING PLAN	
	SCALE NOT TO SCALE		



PHASE-4 PLAN


REFER TO SHEET A-1.0 FOR LEGEND AND TYPICAL NOTES

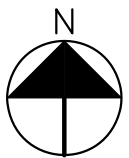
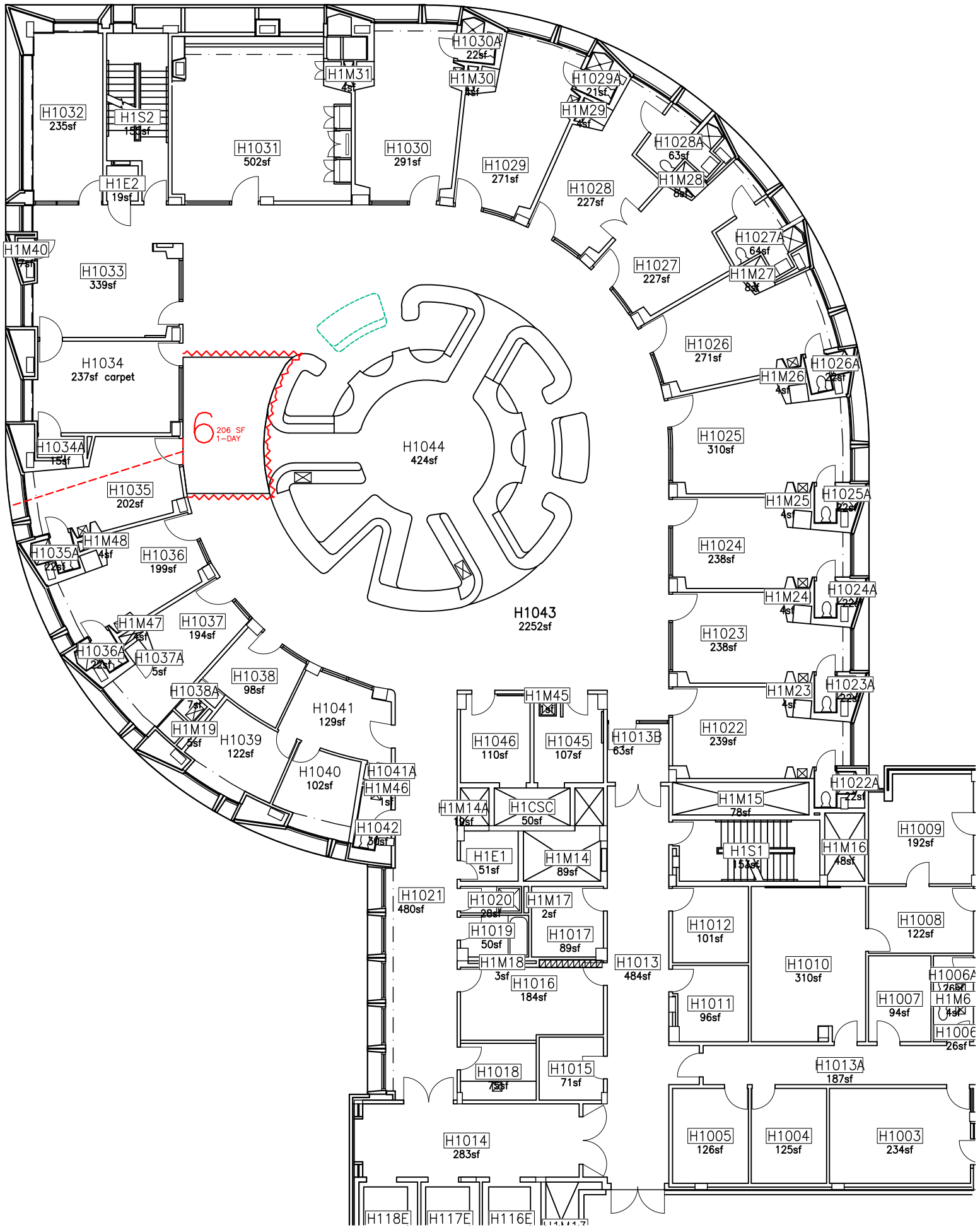
ISSUE DATE 5/15/19	PROJECT NO. 18-029	PROJECT NAME CT TOWER FLOOR-1 FINISH IMPROVEMENTS	 CAMPUS PLANNING, DESIGN AND CONSTRUCTION
DRAWING NO. A-1.4	DRAWN BY CMOSS	DRAWING TITLE FLOOR PHASING PLAN	
	SCALE NOT TO SCALE		



PHASE-5 PLAN


REFER TO SHEET A-1.0 FOR LEGEND AND TYPICAL NOTES

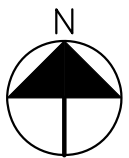
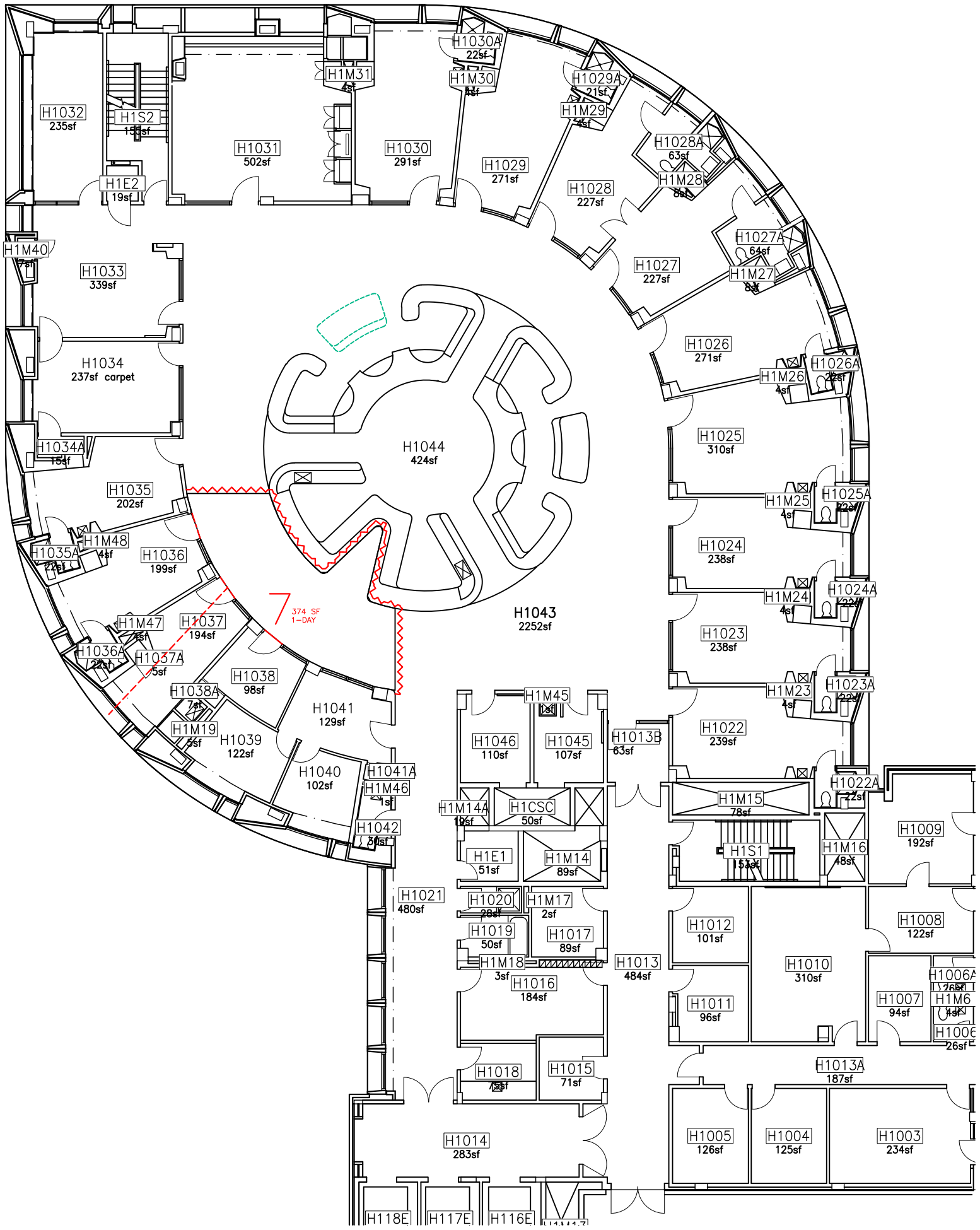
ISSUE DATE 5/15/19	PROJECT NO. 18-029	PROJECT NAME CT TOWER FLOOR-1 FINISH IMPROVEMENTS	 CAMPUS PLANNING, DESIGN AND CONSTRUCTION
DRAWING NO. A-1.5	DRAWN BY CMOSS	DRAWING TITLE FLOOR PHASING PLAN	
	SCALE NOT TO SCALE		



PHASE-6 PLAN


REFER TO SHEET A-1.0 FOR LEGEND AND TYPICAL NOTES

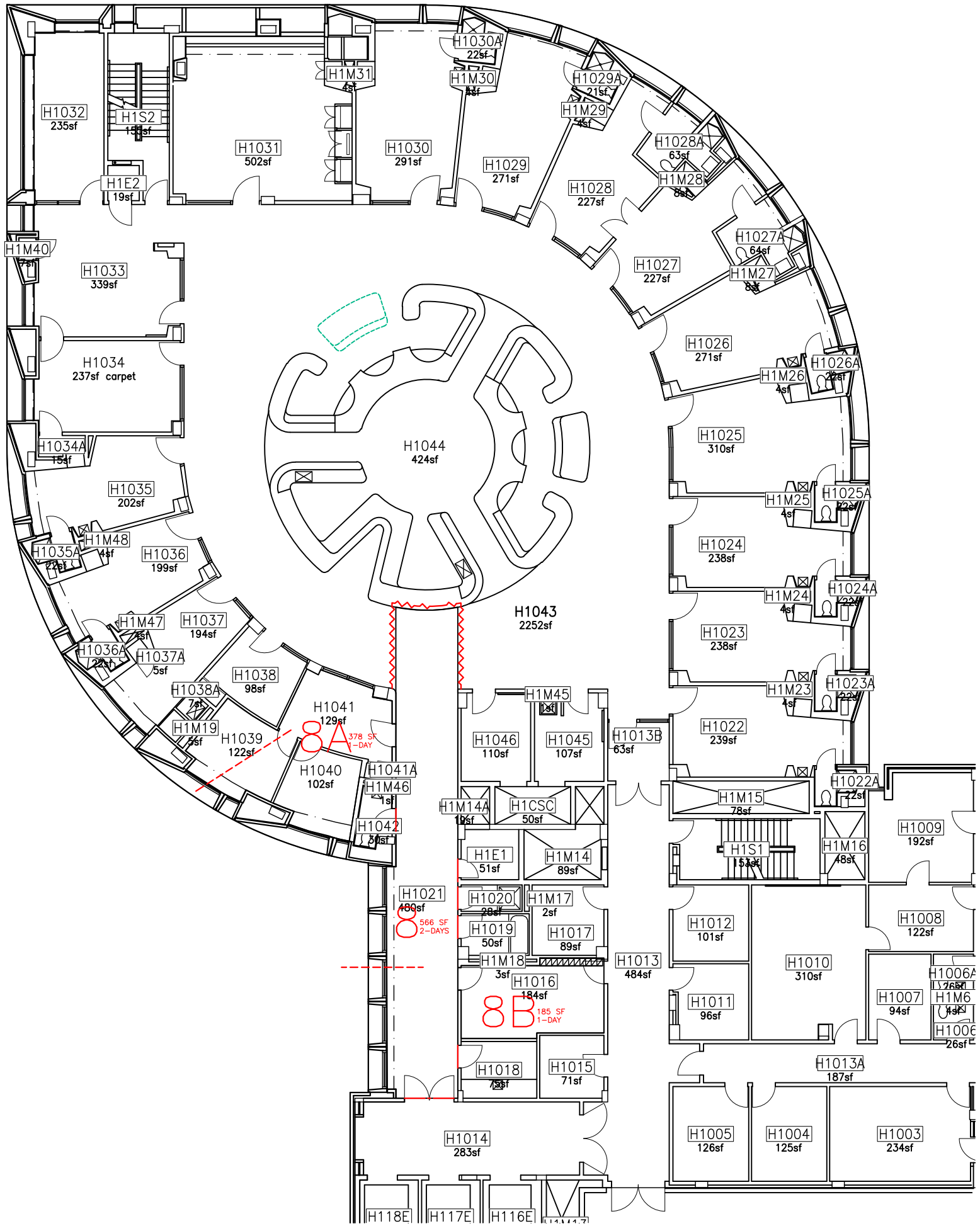
ISSUE DATE 5/15/19	PROJECT NO. 18-029	PROJECT NAME CT TOWER FLOOR-1 FINISH IMPROVEMENTS	 CAMPUS PLANNING, DESIGN AND CONSTRUCTION
DRAWING NO. A-1.6	DRAWN BY CMOSS	DRAWING TITLE FLOOR PHASING PLAN	
SCALE NOT TO SCALE			



PHASE-7 PLAN


REFER TO SHEET A-1.0 FOR LEGEND AND TYPICAL NOTES

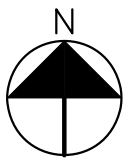
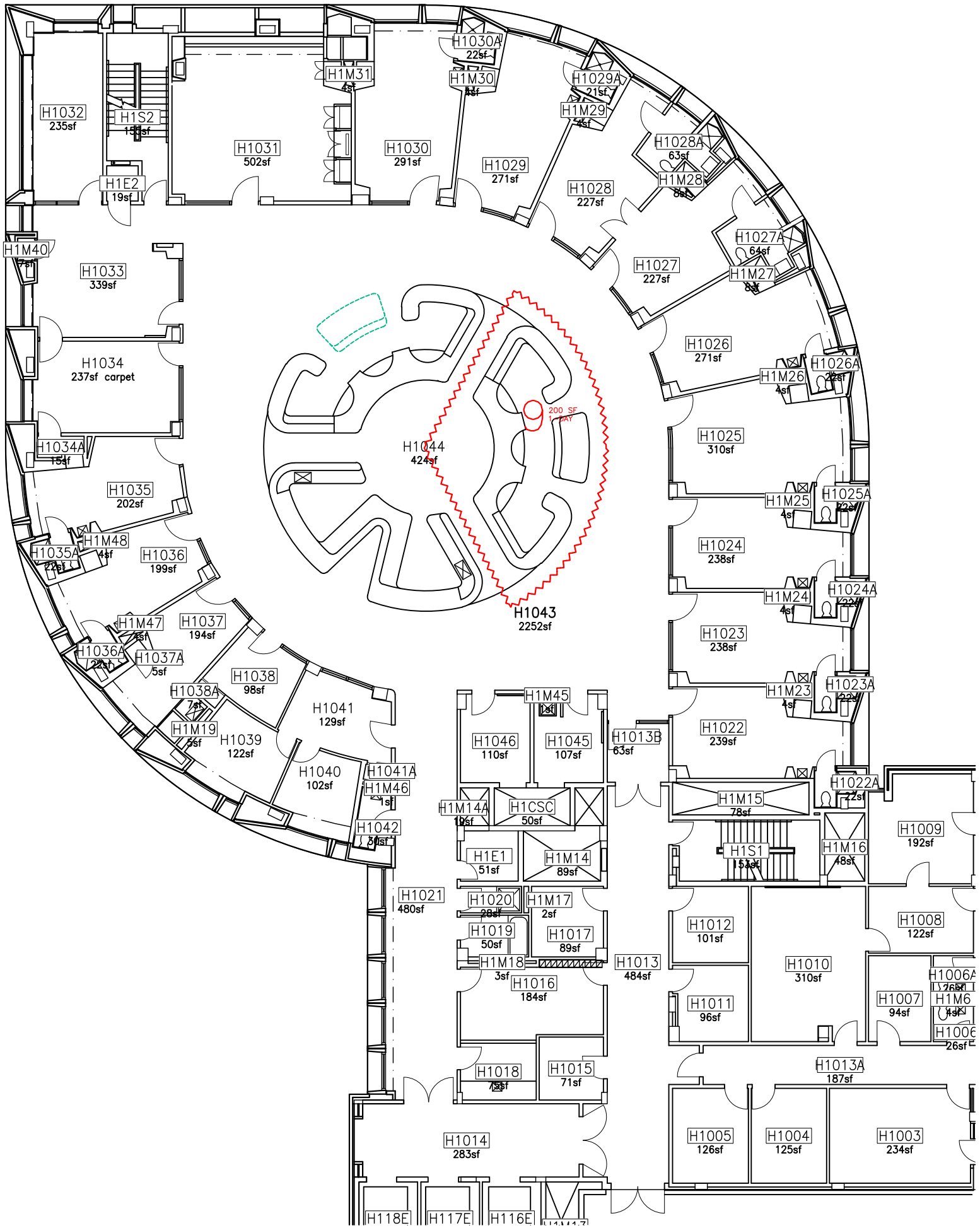
ISSUE DATE 5/15/19	PROJECT NO. 18-029	PROJECT NAME CT TOWER FLOOR-1 FINISH IMPROVEMENTS	 CAMPUS PLANNING, DESIGN AND CONSTRUCTION
DRAWING NO. A-1.7	DRAWN BY CMOSS	DRAWING TITLE FLOOR PHASING PLAN	
	SCALE NOT TO SCALE		



PHASE-8 PLAN


REFER TO SHEET A-1.0 FOR LEGEND AND TYPICAL NOTES

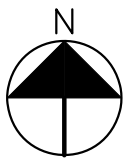
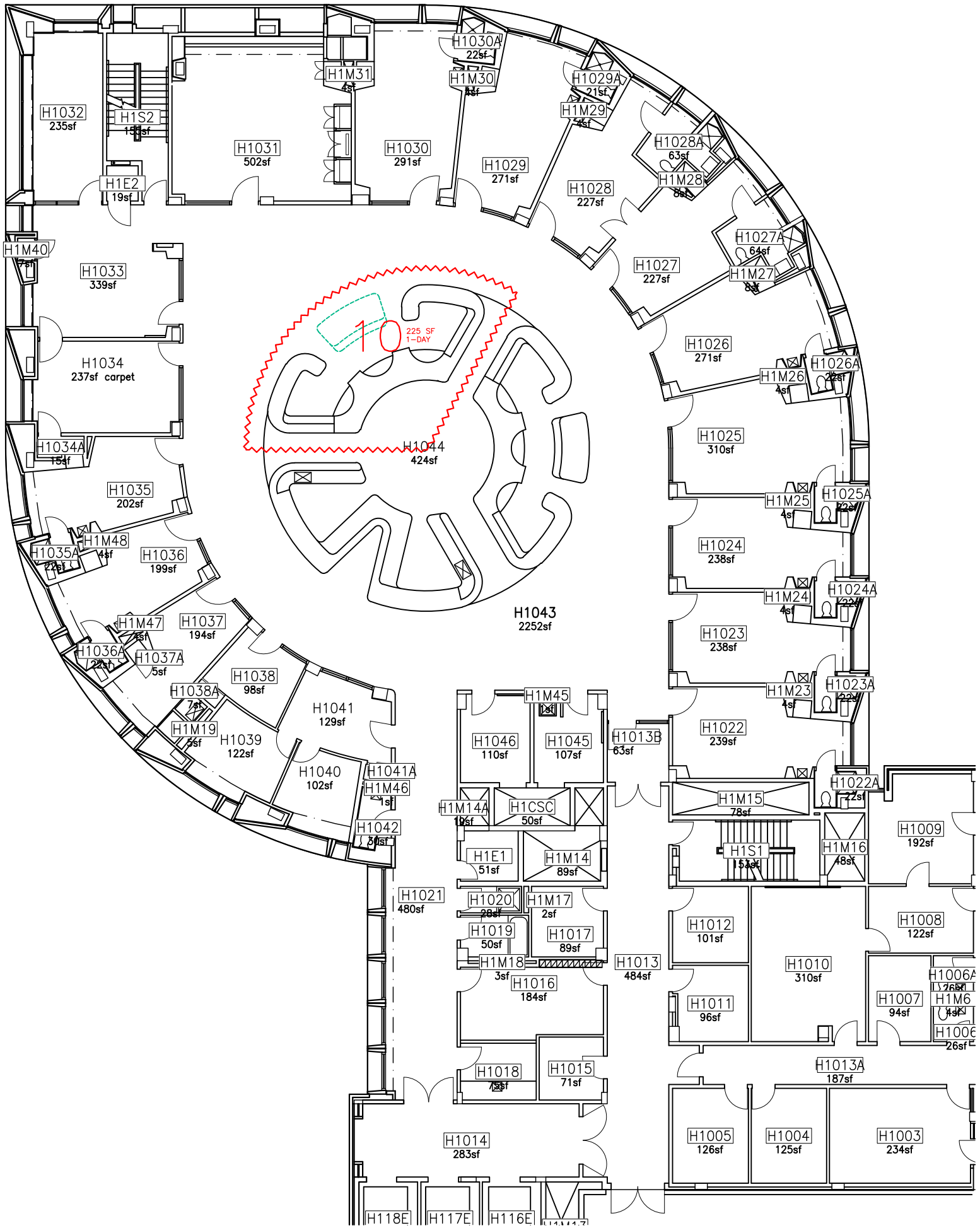
ISSUE DATE 5/15/19	PROJECT NO. 18-029	PROJECT NAME CT TOWER FLOOR-1 FINISH IMPROVEMENTS	 CAMPUS PLANNING, DESIGN AND CONSTRUCTION
DRAWING NO. A-1.8	DRAWN BY CMOSS	DRAWING TITLE FLOOR PHASING PLAN	
	SCALE NOT TO SCALE		



PHASE-9 PLAN


REFER TO SHEET A-1.0 FOR LEGEND AND TYPICAL NOTES

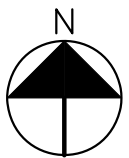
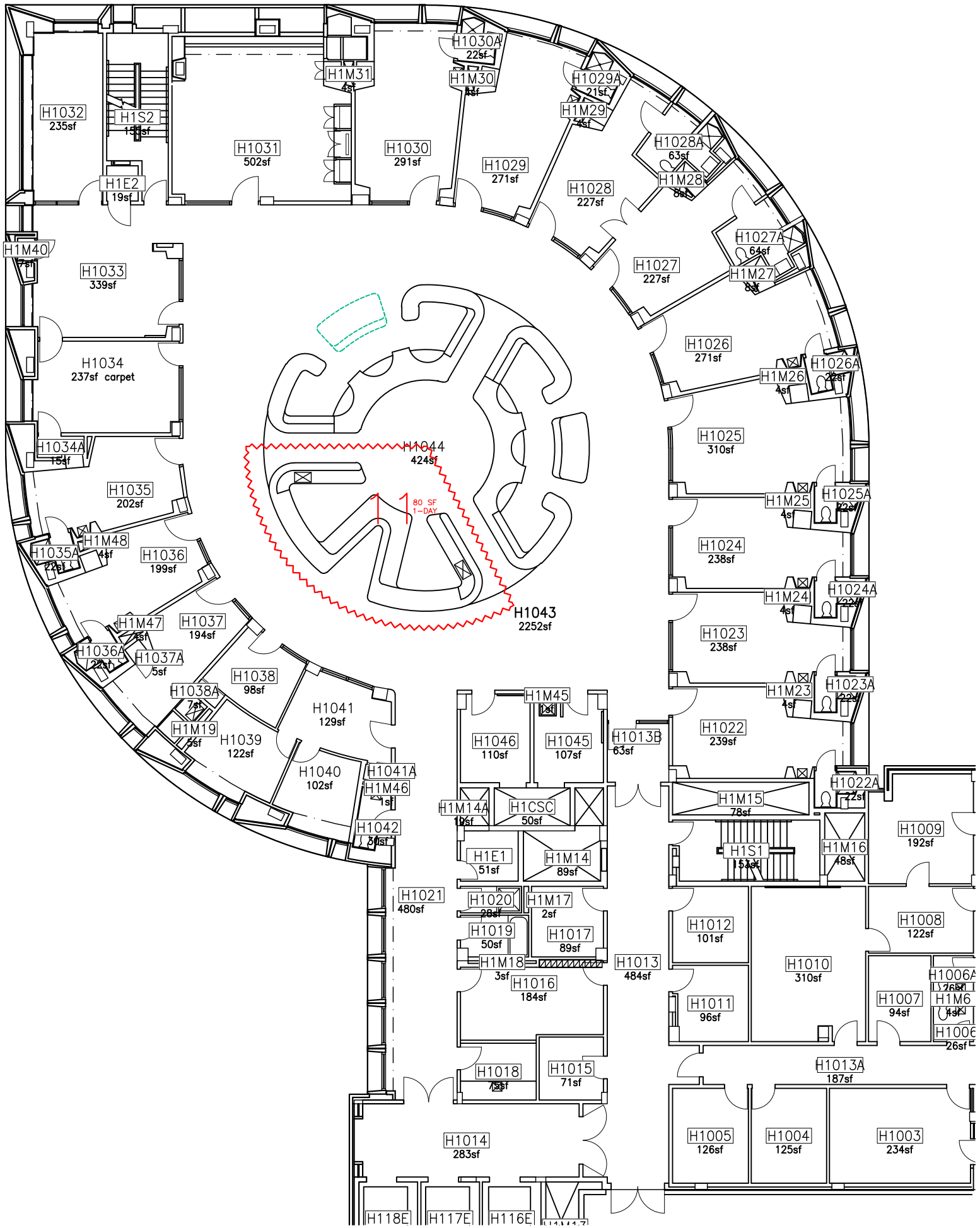
ISSUE DATE 5/15/19	PROJECT NO. 18-029	PROJECT NAME CT TOWER FLOOR-1 FINISH IMPROVEMENTS	 CAMPUS PLANNING, DESIGN AND CONSTRUCTION
DRAWING NO. A-1.9	DRAWN BY CMOSS	DRAWING TITLE FLOOR PHASING PLAN	
	SCALE NOT TO SCALE		



PHASE-10 PLAN


REFER TO SHEET A-1.0 FOR LEGEND AND TYPICAL NOTES

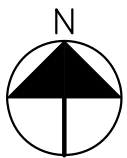
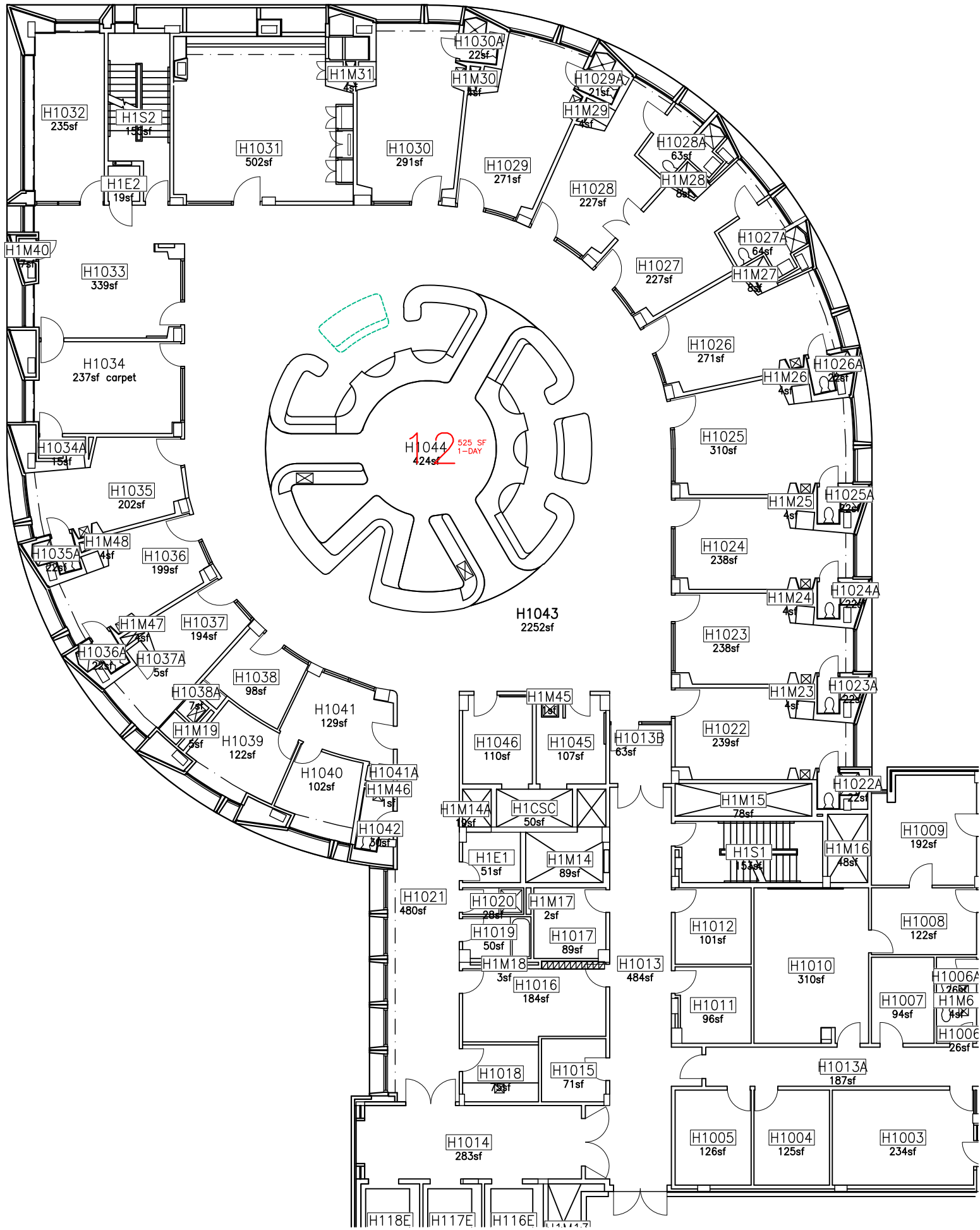
ISSUE DATE 5/15/19	PROJECT NO. 18-029	PROJECT NAME CT TOWER FLOOR-1 FINISH IMPROVEMENTS	 CAMPUS PLANNING, DESIGN AND CONSTRUCTION
DRAWING NO. A-1.10	DRAWN BY CMOSS	DRAWING TITLE FLOOR PHASING PLAN	
	SCALE NOT TO SCALE		



PHASE-11 PLAN


REFER TO SHEET A-1.0 FOR LEGEND AND TYPICAL NOTES

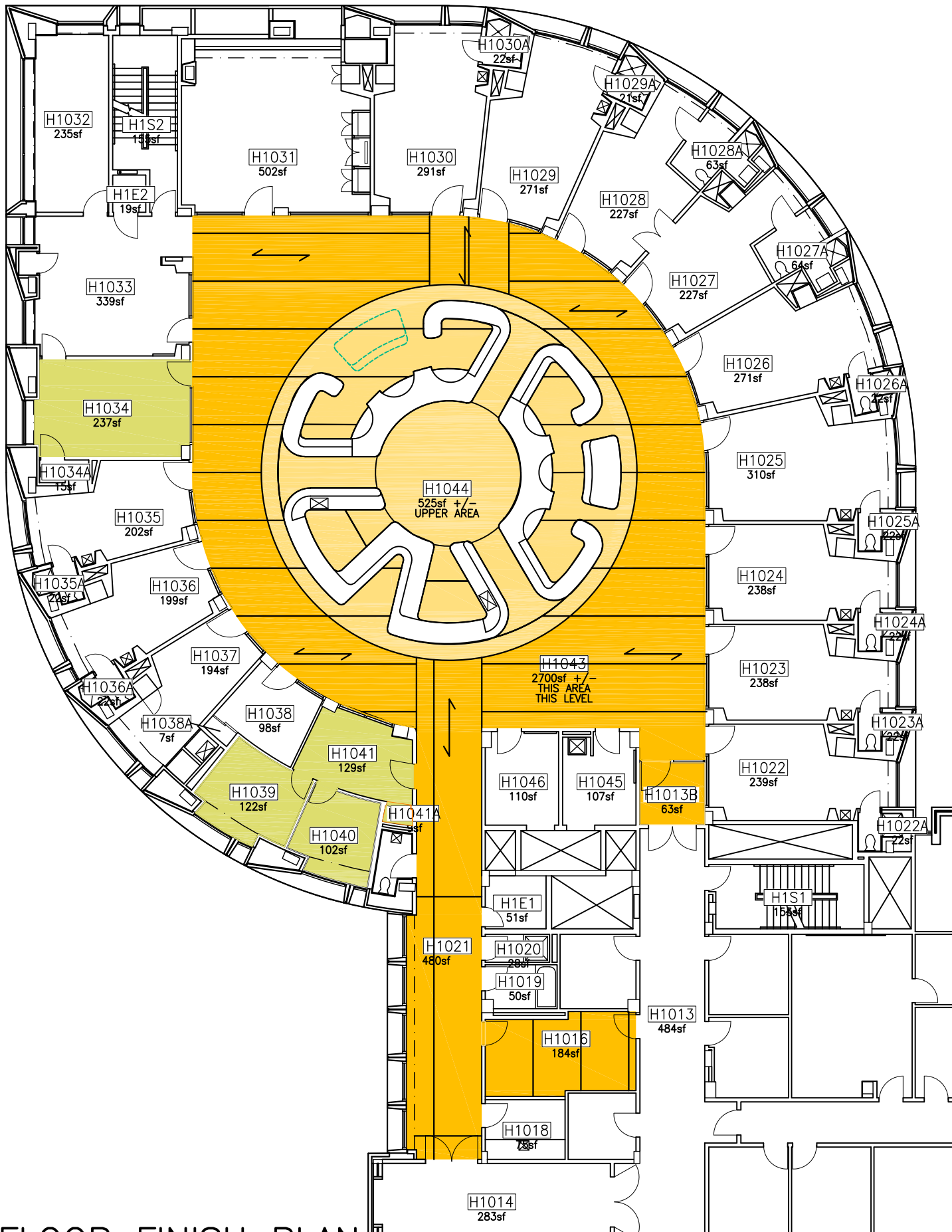
ISSUE DATE 5/15/19	PROJECT NO. 18-029	PROJECT NAME CT TOWER FLOOR-1 FINISH IMPROVEMENTS	 CAMPUS PLANNING, DESIGN AND CONSTRUCTION
DRAWING NO. A-1.11	DRAWN BY CMOSS	DRAWING TITLE FLOOR PHASING PLAN	
	SCALE NOT TO SCALE		



PHASE-12 PLAN

REFER TO SHEET A-1.0 FOR LEGEND AND TYPICAL NOTES

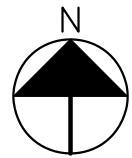
ISSUE DATE 5/15/19	PROJECT NO. 18-029	PROJECT NAME CT TOWER FLOOR-1 FINISH IMPROVEMENTS	 UCONN HEALTH	
DRAWING NO. A-1.12	DRAWN BY CMOSS	DRAWING TITLE FLOOR PHASING PLAN		CAMPUS PLANNING, DESIGN AND CONSTRUCTION
	SCALE NOT TO SCALE			



1
A2

FLOOR FINISH PLAN

THE WORK OF THIS PROJECT SHALL BE PERFORMED IN PHASES AS INDICATED ON DRAWINGS A-1.1 THROUGH A-1.12



LEGEND

	ASVF-1	MANUFACTURER: COMMERCIAL STYLE: COLOR: CARMEL SEEM:	ECORE INFINITY Rx 9818 CREME HOT WELD
	ASVF-2	MANUFACTURER: COMMERCIAL STYLE: COLOR: SEEM:	ECORE COSMOS Rx 9816 METEOR HOT WELD
	CPT-1	MANUFACTURER: SIZE: STYLE: COLOR:	MOHAWK GROUP MODULAR TILE 24X24 BY THE BOOK GT091 228 PROMINENT
	VINYL BASE VB-1	MANUFACTURER: SIZE: RUBBER COLOR:	JOHNSONITE 4"H 1/8" THICK 283 TOAST

NOTE:
FOR ALL AREAS RECEIVING NEW FLOORING THE EXISTING WALL BASE SHALL BE REMOVED AND REPLACED WITH NEW WALL BASE (VB-1)

INSTALLATION OF SOUND ATTENUATING VINYL FLOORING

GENERAL

THE INSTALLER SHALL BE EXPERIENCED AND TRAINED FOR THE INSTALLATION OF THESE PRODUCTS, HAVING OBTAINED THE TECHNICAL QUALIFICATIONS TO EXECUTE THE WORK.

THE INSTALLER SHALL BE QUALIFIED IN THE HEAT WELDING OF COMMERCIAL SHEET VINYL WITH AT LEAST FIVE YEARS EXPERIENCE AND HAVE COMPLETED AT LEAST THREE PROJECTS OF SIMILAR SIZE AND SCOPE WITHIN THE PAST THREE YEARS.

PHASING

THE PHASED AREA OF WORK SHALL BE EVACUATED DURING THE REFINISHING OPERATIONS. SINGLE DAY PHASES MAY PROCEED ON WEEKDAY DAYS BETWEEN 7AM AND 6PM MONDAY THROUGH THURSDAY. MULTIPLE DAY PHASES SHALL START ON A MONDAY OF THAT WEEK AND BE COMPLETED BY THE END OF THE DAY ON THURSDAY.

EXECUTION

WITHIN EACH PHASED AREA, THE CONTRACTOR SHALL PERFORM THE WORK REQUIRED FOR REMOVAL AND INSTALLATION AS FOLLOWS:

- SET-UP CONTAINMENT BARRIERS AND INSTALL HEPA AIR PURIFIER.
- WET SPRAY CARPET AND REMOVE. PLACE IN CONTAINED CART FOR TRANSPORTING.
- MIST GLUE RESIDUE AND HAND SCRAPER TILL REMOVED.
- VACUUM FLOOR AREA CLEAN.
- APPLY SKIM COAT LEVELER.
- APPLY GLUE/ADHESIVE AND FLOOR MATERIAL.
- HEAT WELD PRODUCT SEAMS.
- BREAKDOWN AND REMOVE BARRIER MATERIAL.
- REMOVE COVER TRANSPORT CART, LEFT OVER SUPPLIES AND TOOLS FROM THE UNIT.

ISSUE DATE
5/15/19

PROJECT NO.
18-029

PROJECT NAME
CT TOWER FLOOR-1 FINISH IMPROVEMENTS

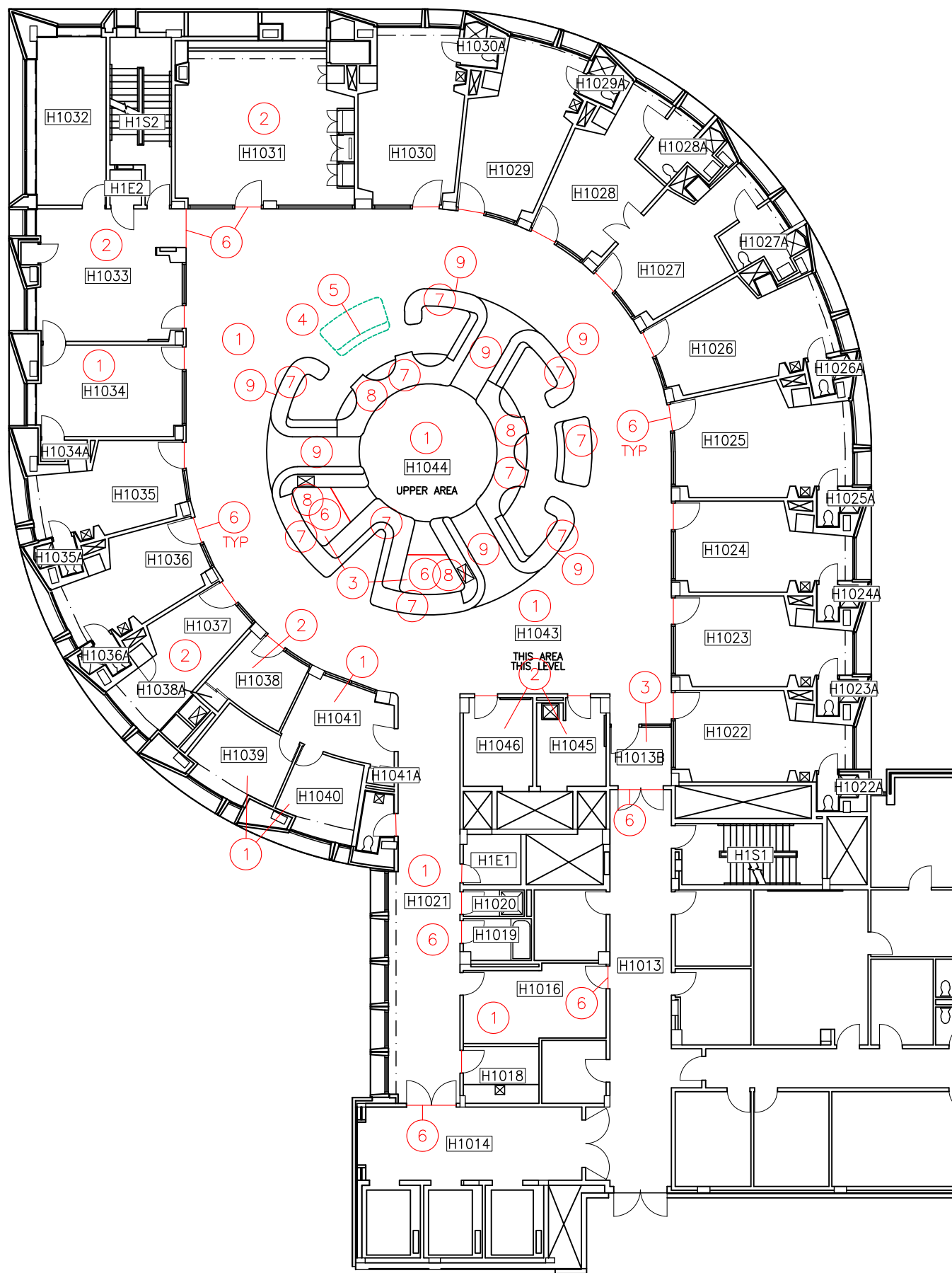
DRAWING NO.
A-2

DRAWN BY
CMOSS
SCALE
NOT TO SCALE

DRAWING TITLE
FLOOR PATTERN PLAN

UConn
HEALTH

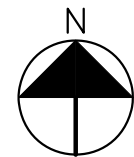
CAMPUS PLANNING, DESIGN
AND CONSTRUCTION



1
A3

FLOOR CONSTRUCTION PLAN

THE WORK OF THIS PROJECT SHALL BE PERFORMED IN PHASES AS INDICATED ON DRAWINGS A-1.1 THROUGH A-1.12



LEGEND

- ① SPECIFIC ACTION NOTES – REFER TO SCHEDULE OF ITEMS

NOTES

GENERAL


UNLESS NOTED OTHERWISE, TRANSITIONS FROM NEW FLOORING WORK (ASVF) TO EXISTING HARD SURFACE FLOORING SHALL BE INCLUDED AS PART OF THIS SCOPE OF WORK.

FLOORING MATERIALS SPECIFIED SHALL BE INSTALLED BY; PRODUCT, PATTERN, DIRECTION, AND REQUIREMENTS AS INDICTED HEREIN.

THE PHASED AREA OF WORK SHALL BE EVACUATED DURING THE REFINISHING OPERATIONS. SINGLE DAY PHASES MAY PROCEED ON WEEKDAY DAYS BETWEEN 7AM AND 6PM MONDAY THROUGH THURSDAY. MULTIPLE DAY PHASES SHALL START ON A MONDAY OF THAT WEEK AND BE COMPLETED BY THE END OF THE DAY ON THURSDAY.

SCHEDULE OF ITEMS

- ① REMOVE EXISTING CARPET AND APPLIED VINYL BASE. REMOVE EXISTING CARPET ADHESIVE AND PREPARE SUBSTRATE TO RECEIVE NEW FLOOR AND BASE MATERIAL.
- ② REMOVE EXISTING VINYL BASE IN ALL ROOMS TO RECEIVE PAINT. ONCE PAINTING IS COMPLETE, INSTALL NEW VINYL BASE.
- ③ REMOVE EXISTING VINYL COMPOSITION TILE AND VINYL BASE AND PREPARE SUBSTRATE TO RECEIVE NEW FLOORING MATERIAL.
- ④ NOT INCLUDED – WORK TO BE CONTRACTED SEPARATELY BY UCHC. REMOVE SECTION OF EXISTING NURSE STATION CABINETRY. REMOVE ANY AND ALL THROUGH FLOOR CONDUIT PENETRATIONS AND WIRING AND TO THE NEAREST JUNCTION BOX IN THE CEILING OF H-MAIN. TERMINATE WIRES IN ACCORDANCE WITH LATEST ADOPTED VERSION OF THE NEC.
- ⑤ NOT INCLUDED – WORK TO BE CONTRACTED SEPARATELY BY UCHC. FLOOR PENETRATION FILL: IN AREAS OF REMOVAL OF FLOOR PENETRATING ITEMS, FASTEN 18 GA. METAL FORM TO UNDERSIDE OF HOLE, FILL HOLE WITH NON-SHRINK GROUT FOR FULL THICKNESS OF FLOOR SLAB. FINISH TO BE FLUSH WITH ADJACENT FLOOR SURFACE
- ⑥ PROVIDE RUBBER TRANSITION STRIP TO MATCH BASE COLOR AT CHANGE IN FLOOR MATERIAL. WHEN OCCURRING AT A DOOR LOCATION, CENTER TRANSITION STRIP AT CENTER OF DOOR.
- ⑦ REMOVE EXISTING FLOORING IN ALL AREAS BELOW NURSE STATION WORK COUNTERS AND ROLL-IN CABINETS. PREPARE AREA AND INSTALL NEW FLOOR MATERIAL.
- ⑧ REMOVE EXISTING VINYL BASE FROM BOTTOM OF NURSE STATION PANELS AND REPLACE WITH NEW AT END OF REFINISHING OPERATIONS. FIELD VERIFY LOCATION AND EXTENT.
- ⑨ AT TOE KICK RECESSES REMOVE EXISTING CARPET PANELS. AREAS TO BE FINISHED WITH FLOORING MATERIAL. FIELD VERIFY LOCATION AND EXTENT.

ISSUE DATE 5/15/19	PROJECT NO. 18-029	PROJECT NAME CT TOWER FLOOR-1 FINISH IMPROVEMENTS	 CAMPUS PLANNING, DESIGN AND CONSTRUCTION
DRAWING NO. A-3	DRAWN BY CMOSS	DRAWING TITLE FLOOR CONSTRUCTION PLAN	
	SCALE NOT TO SCALE		