

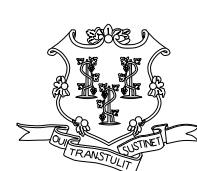
**CONNECTICUT DEPARTMENT  
OF  
TRANSPORTATION**

**MAINTENANCE OPERATIONS  
CHAIN LINK AND WIRE FENCE  
CONTRACT DRAWINGS**

**HIGHWAY OPERATIONS**

CONTRACT FOR:

**MAINTENANCE OPERATIONS  
CHAIN LINK AND WIRE FENCE**



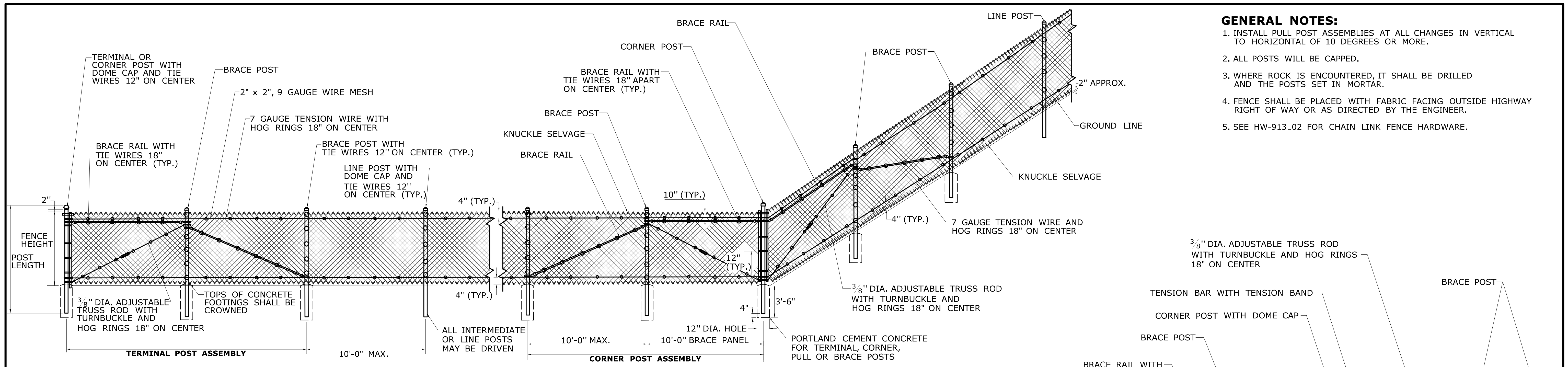
**STATE OF CONNECTICUT  
DEPARTMENT OF TRANSPORTATION**



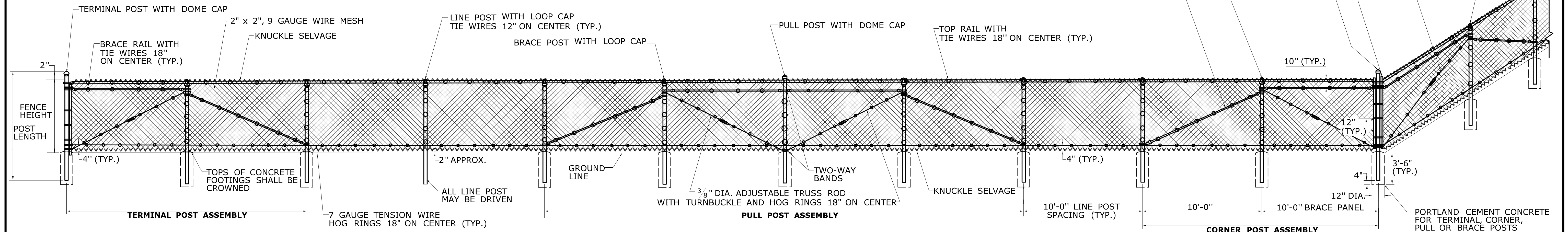
**TITLE SHEET**

CONTRACT NO.:

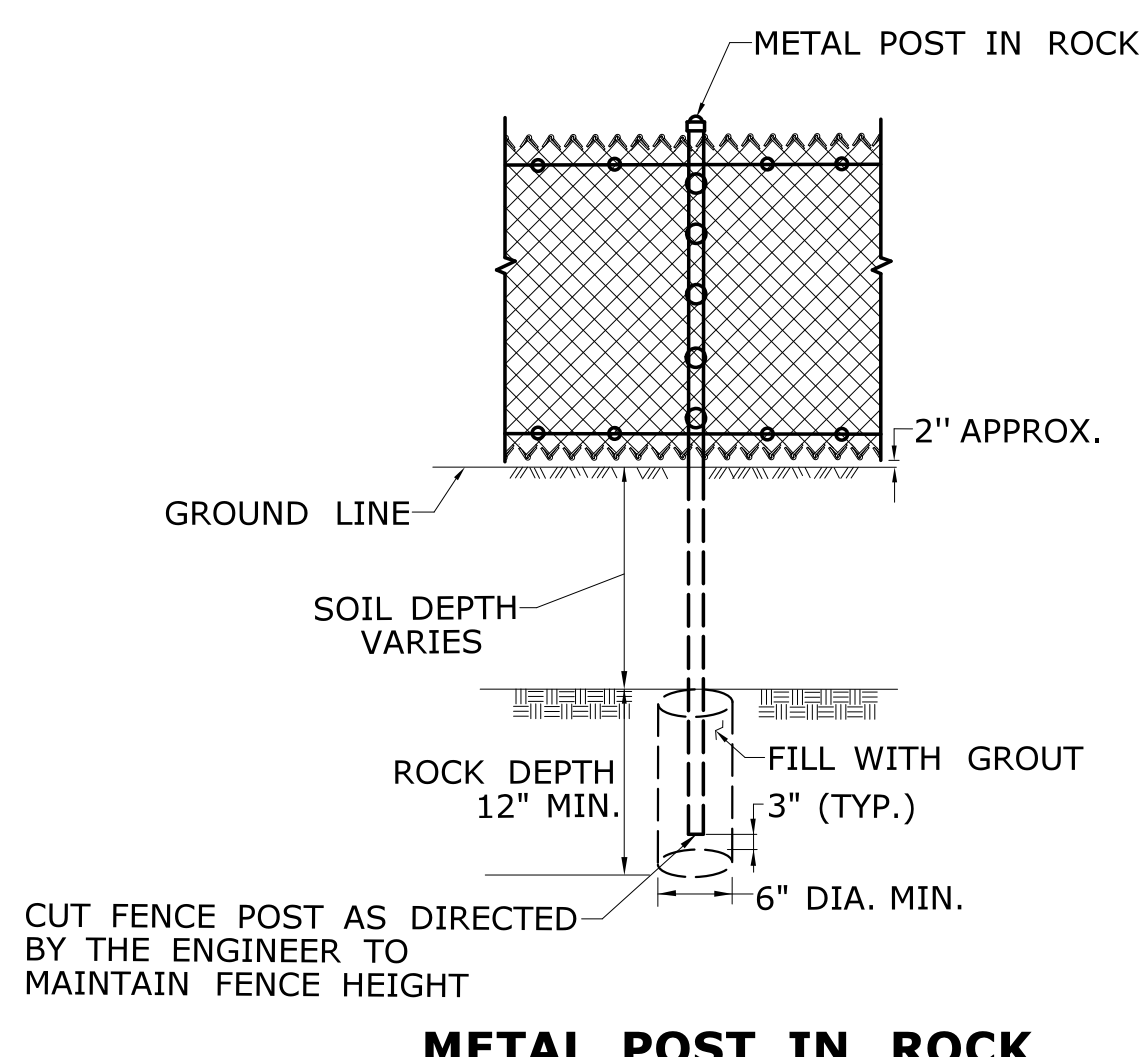




**CHAIN LINK FENCE WITH TOP TENSION WIRE**



**CHAIN LINK FENCE WITH TOP BRACE RAIL AND INTERMEDIATE OR BOTTOM TENSION WIRE**



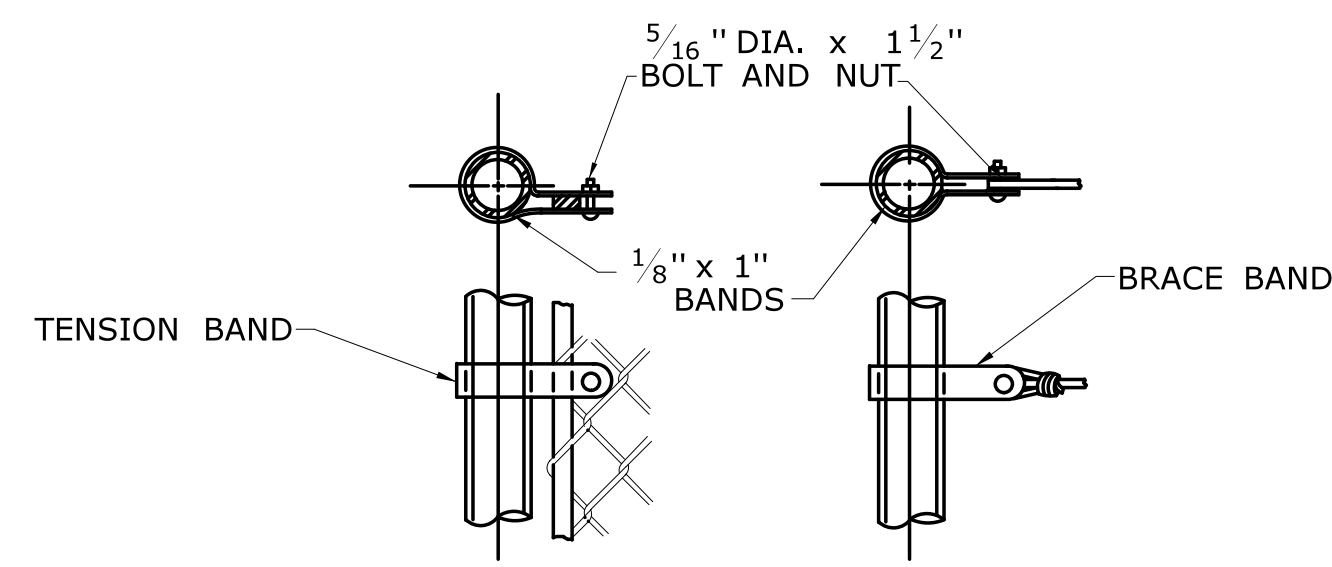
**METAL POST IN ROCK**

**GENERAL NOTES:**

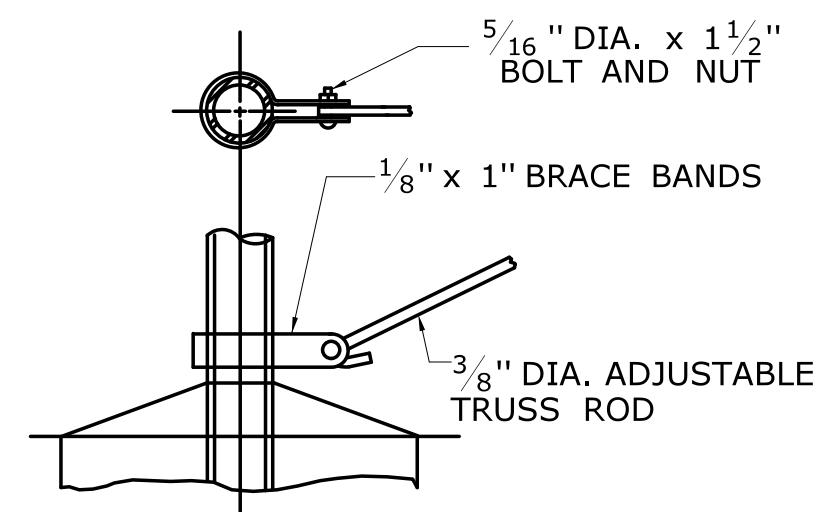
1. INSTALL PULL POST ASSEMBLIES AT ALL CHANGES IN VERTICAL TO HORIZONTAL OF 10 DEGREES OR MORE.
2. ALL POSTS WILL BE CAPPED.
3. WHERE ROCK IS ENCOUNTERED, IT SHALL BE DRILLED AND THE POSTS SET IN MORTAR.
4. FENCE SHALL BE PLACED WITH FABRIC FACING OUTSIDE HIGHWAY RIGHT OF WAY OR AS DIRECTED BY THE ENGINEER.
5. SEE HW-913.02 FOR CHAIN LINK FENCE HARDWARE.

FENCE FABRIC HEIGHT	GROUP 1A	GROUP 1C
	ASTM F1083 SCH. 40 PIPE 50,000 PSI DIAMETER	ASTM F1043 ELEC. RESISTANCE WELDED PIPE 50,000 PSI DIAMETER
<b>LINE OR INTERMEDIATE POST</b>		
UP TO 5'-0"	1 7/8"	1 7/8"
6'-0" TO 7'-0"	2 3/8"	2 3/8"
8'-0" TO 9'-0"	2 7/8"	2 7/8"
10'-0"	3 1/2"	3 1/2"
12'-0" OR HIGHER	4"	4"
<b>TERMINAL, CORNER OR PULL POST</b>		
UP TO 5'-0"	2 3/8"	2 3/8"
6'-0" TO 7'-0"	2 7/8"	2 7/8"
8'-0" TO 9'-0"	3 1/2"	3 1/2"
10'-0" OR HIGHER	4"	4"
<b>TOP OR BRACE RAIL POSTS UP TO 6'-0"</b>	1 5/8"	1 5/8"
<b>POSTS HIGHER THAN 6'-0"</b>	1 7/8"	1 7/8"

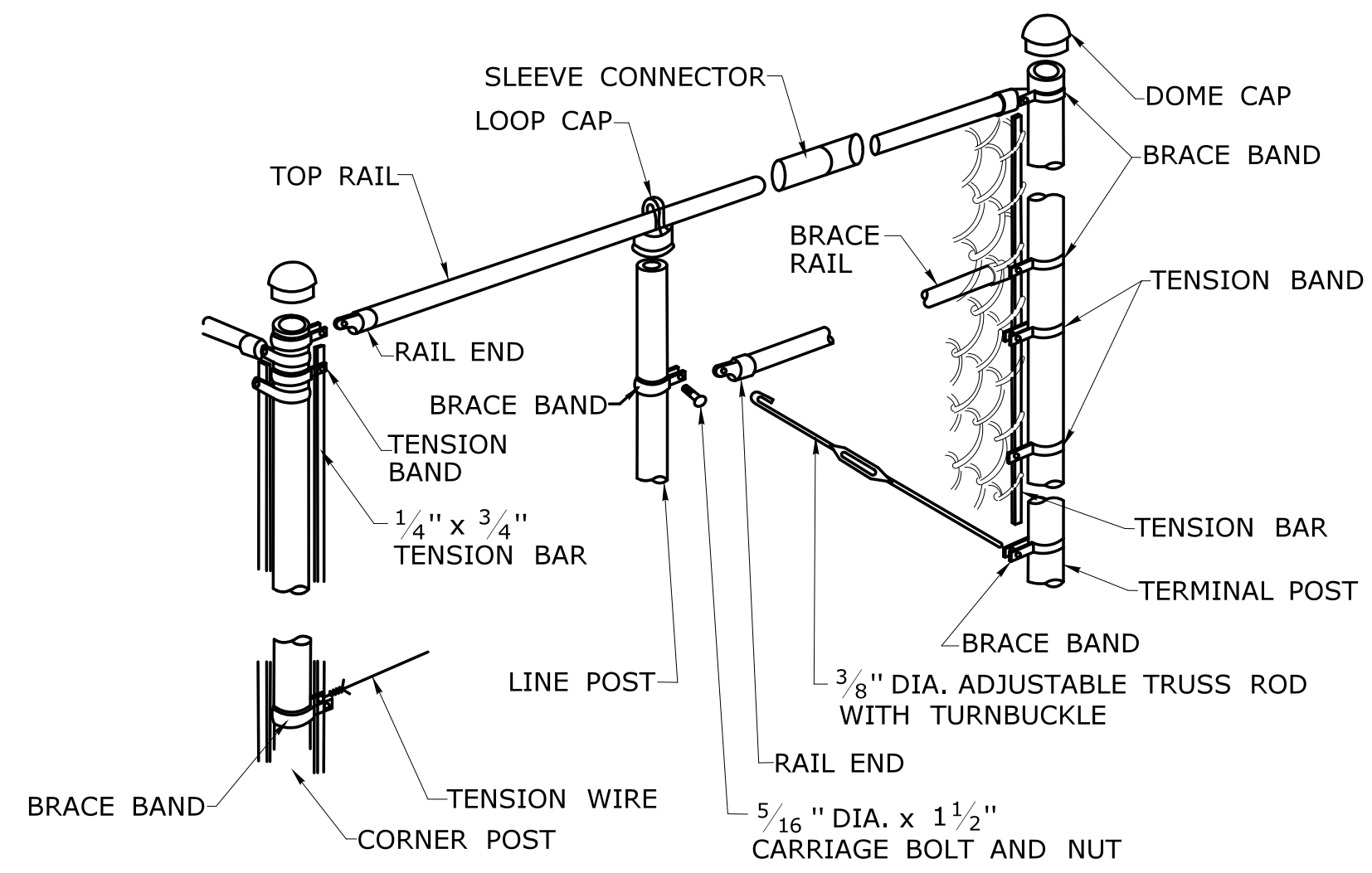




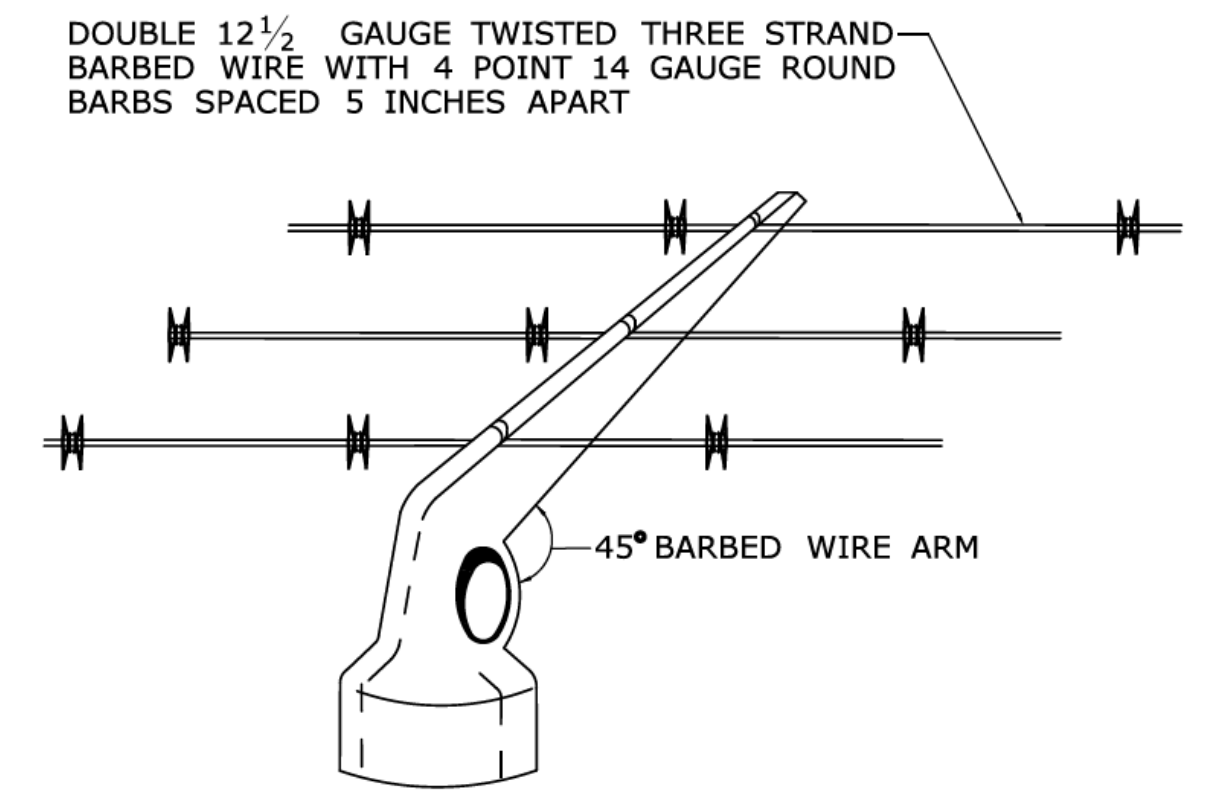
**TENSION BAR TENSION WIRE**



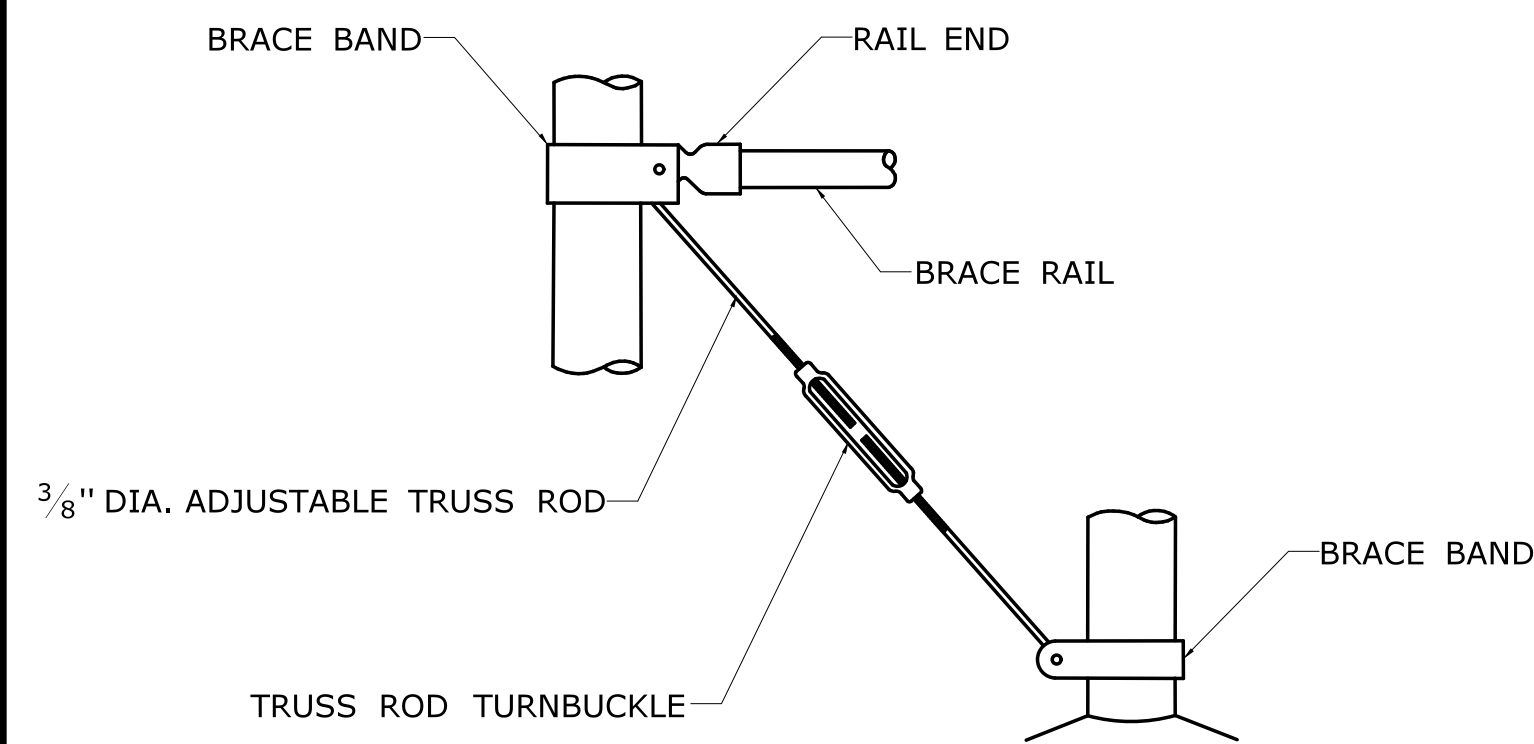
**ADJUSTABLE TRUSS ROD**



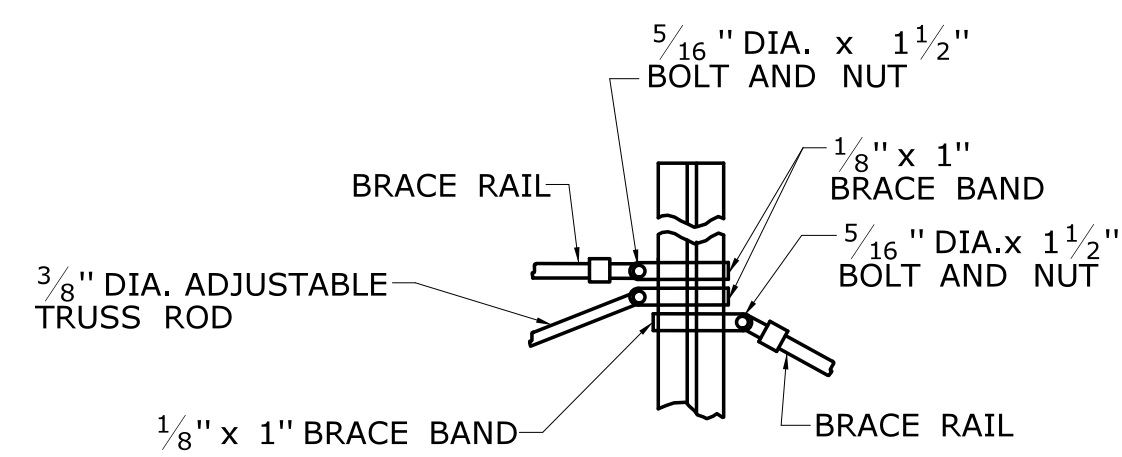
**TOP RAIL / TRUSSED BRACE RAIL WITH BOTTOM TENSION WIRE**



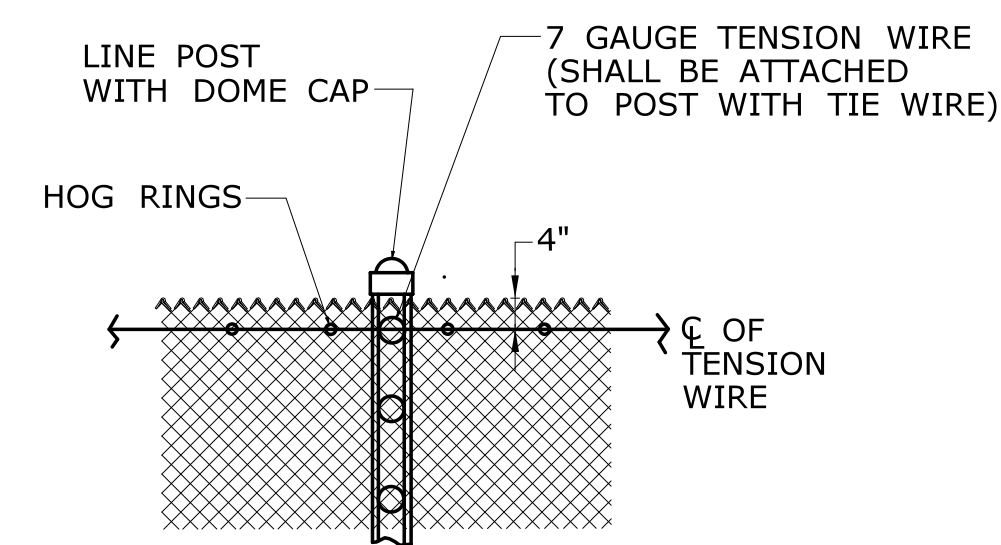
**THREE STRAND BARBED WIRE AND ARM**  
ONLY TO BE INSTALLED ON FENCE 6 1/2' HIGH OR HIGHER AT STATE STORAGE FACILITIES, AT VESSEL OPERATIONS OR AT AIRPORTS



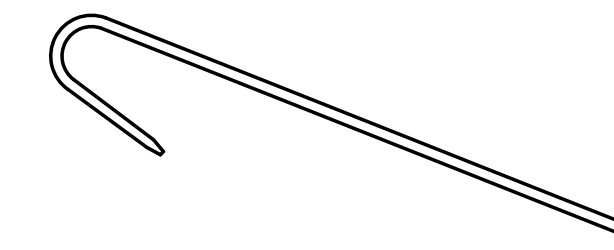
**BRACE & TRUSS CONNECTIONS**



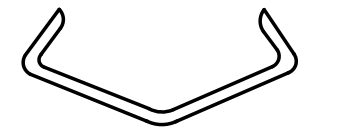
**BRACE RAILS ATTACHMENT TO LINE POSTS**



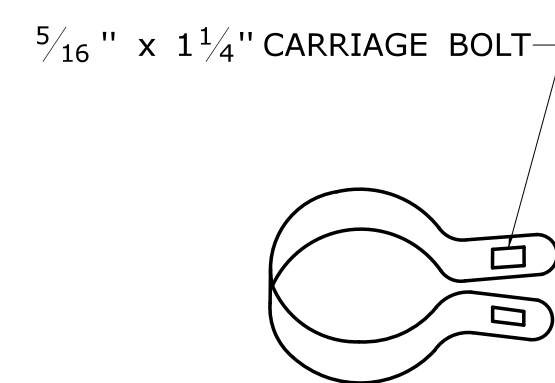
**TENSION WIRE**



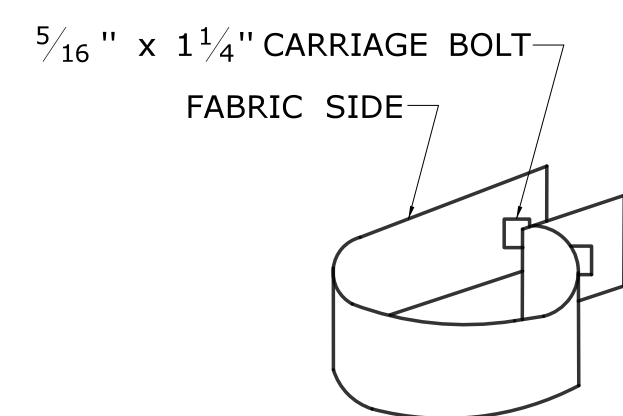
**TIE WIRE**



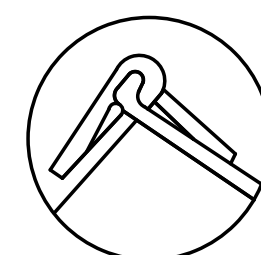
**HOG RING**



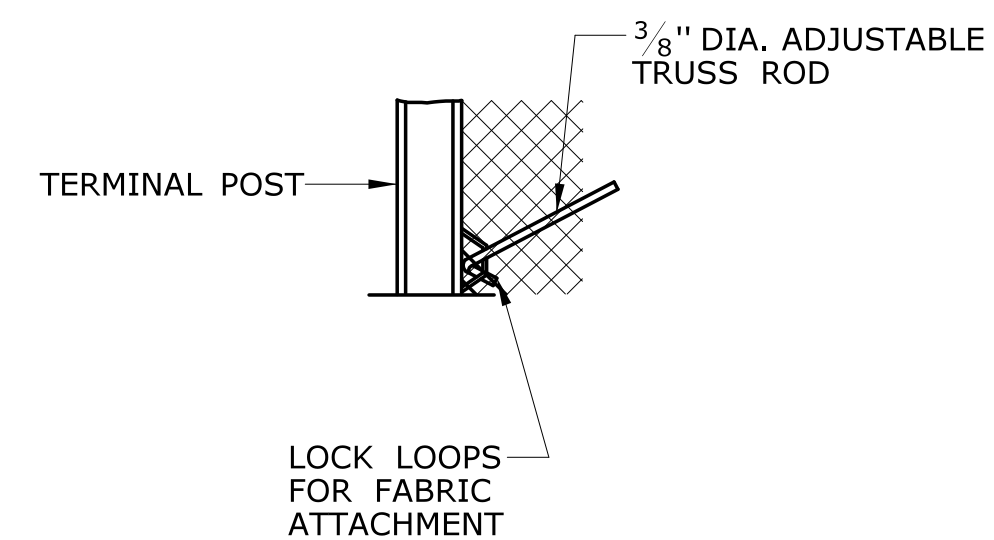
**1/8" x 1" BRACE BAND**



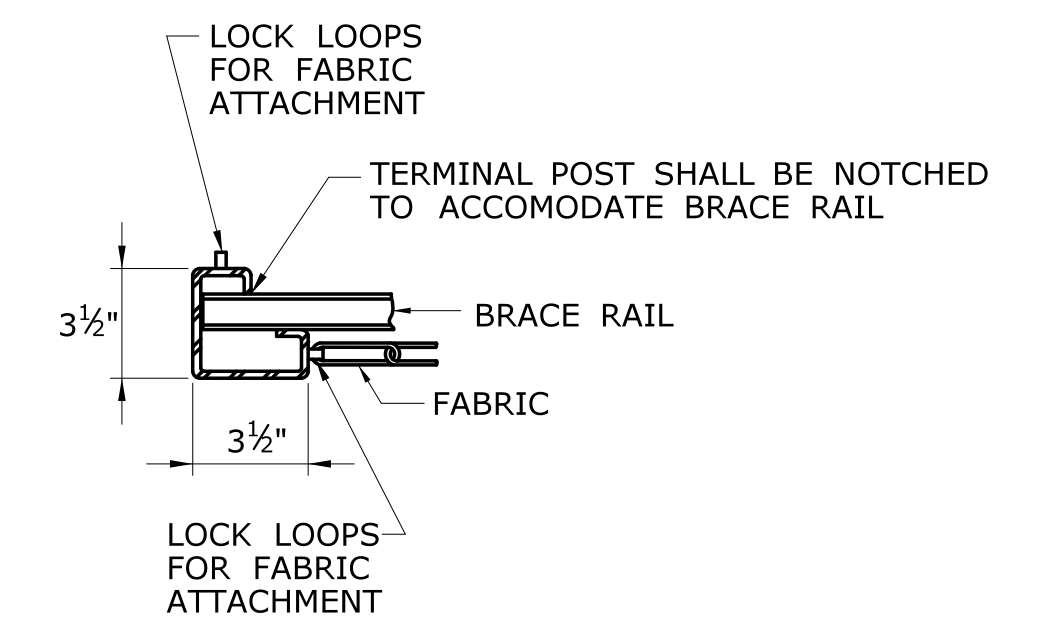
**1/8" x 1" TENSION BAND**



**KNUCKLE SELVAGE**

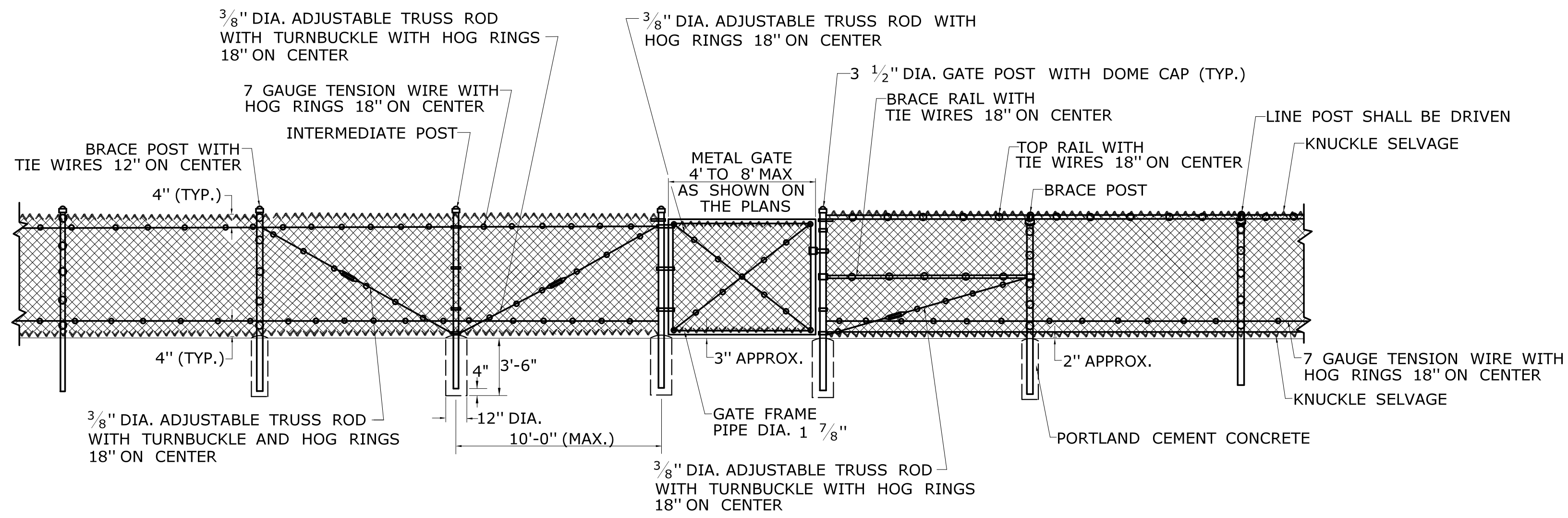


**TRUSS ROD ATTACHMENT**

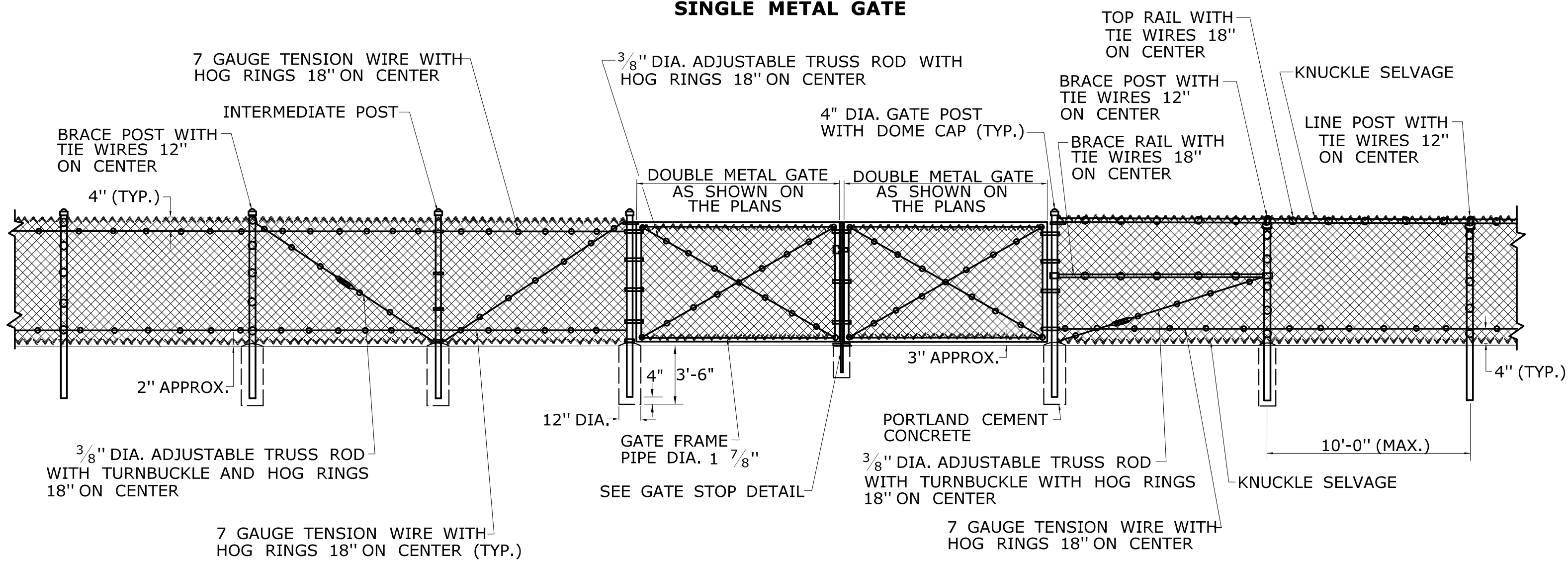


**FABRIC AND BRACE RAIL ATTACHMENT**

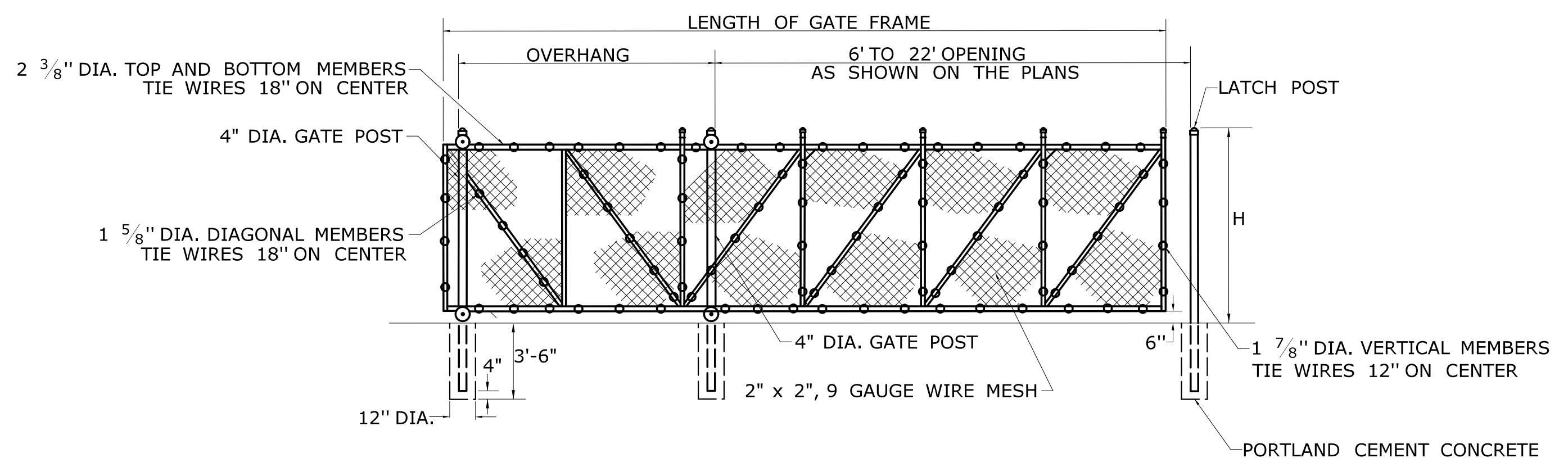
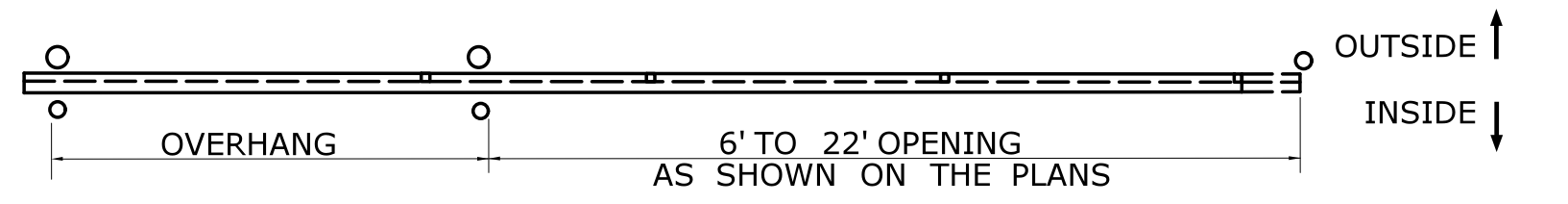




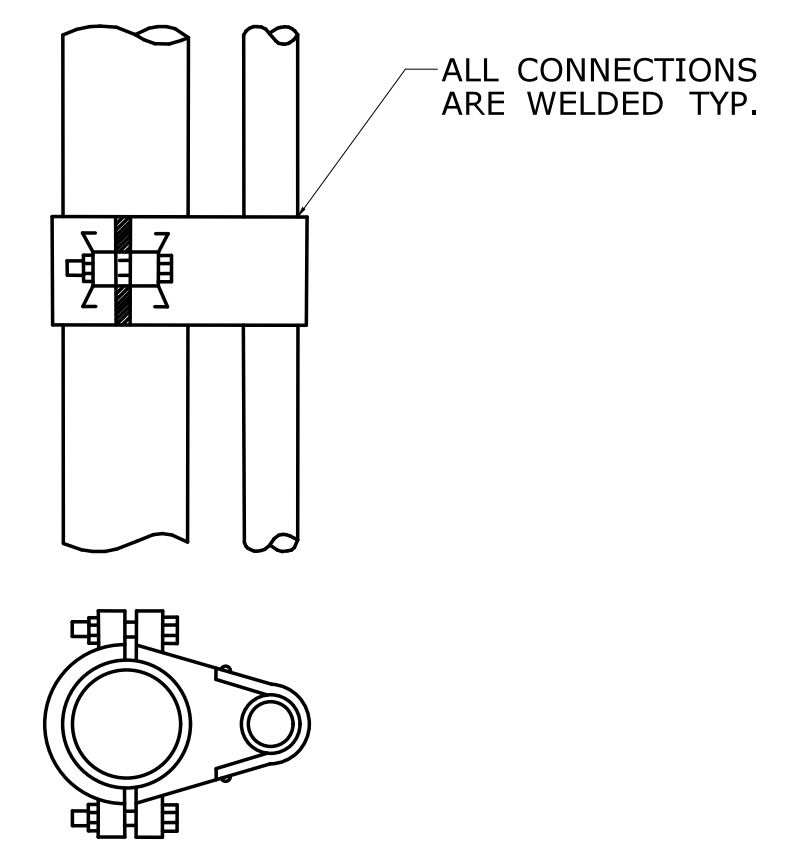
**SINGLE METAL GATE**



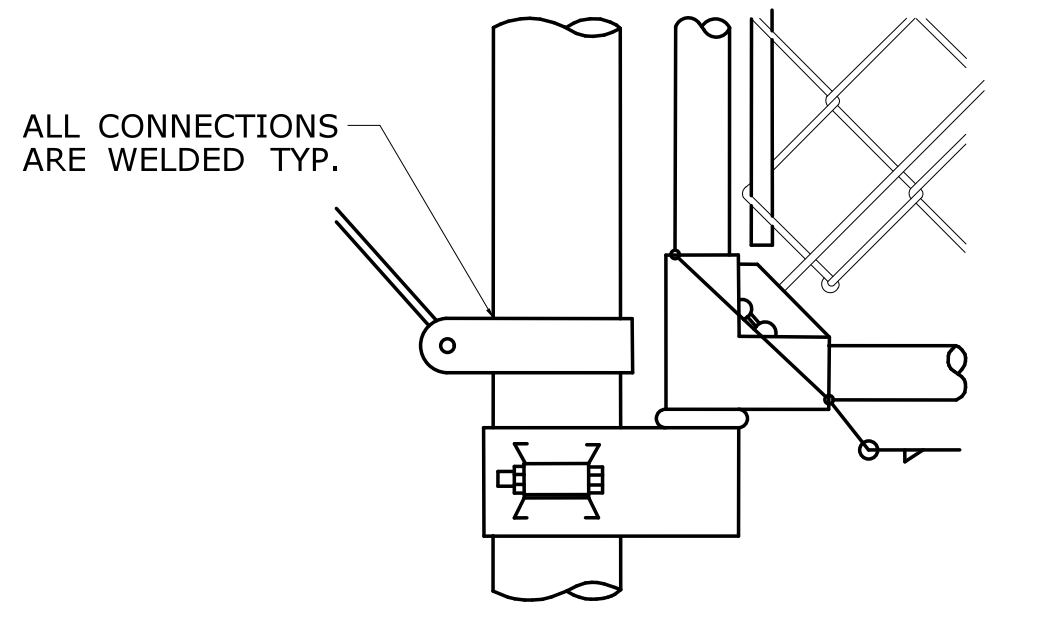
**DOUBLE METAL GATE**



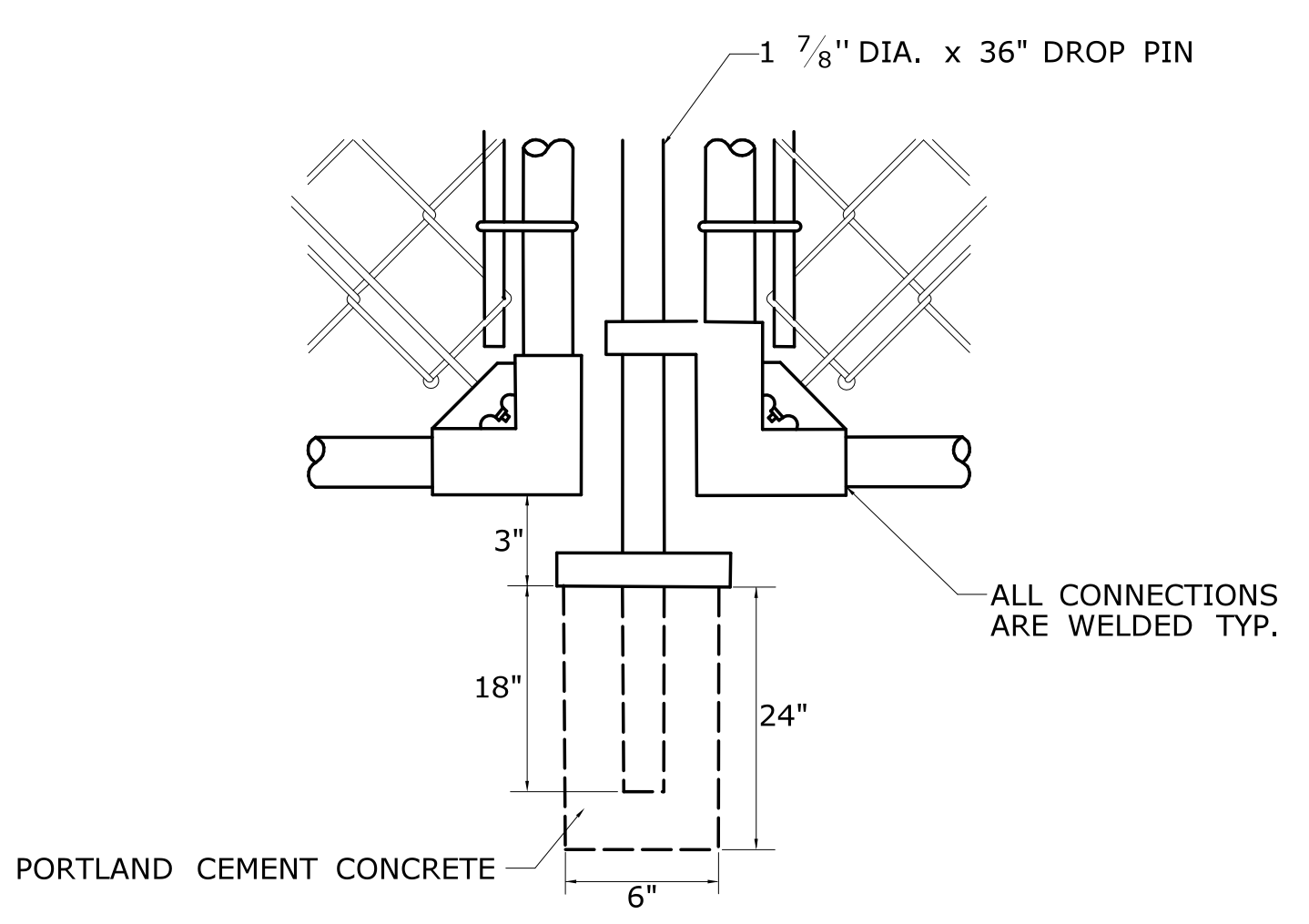
**SINGLE CANTILEVERED SLIDING GATE**



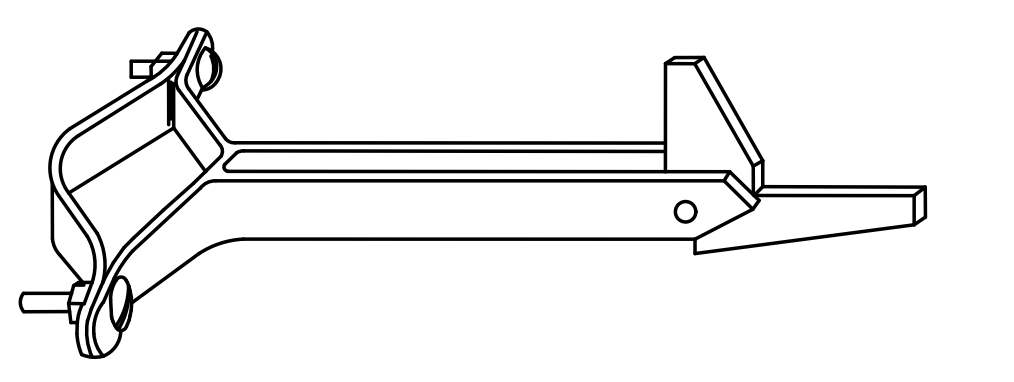
**TOP GATE HINGE**



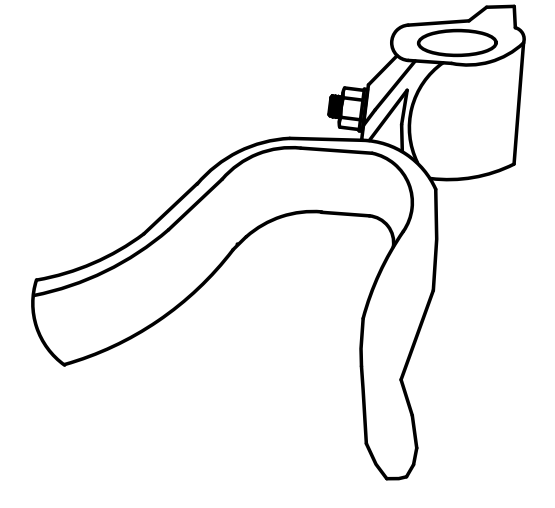
**GATE HINGE BOTTOM**



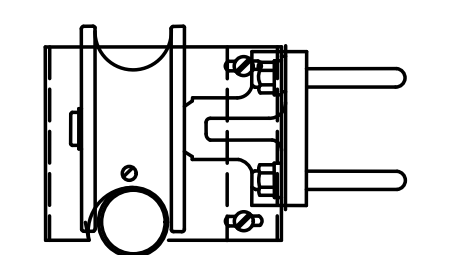
**GATE STOP**



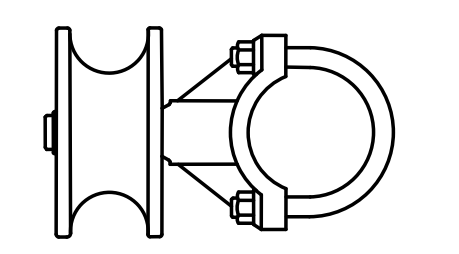
**GATE HOLD BACK**



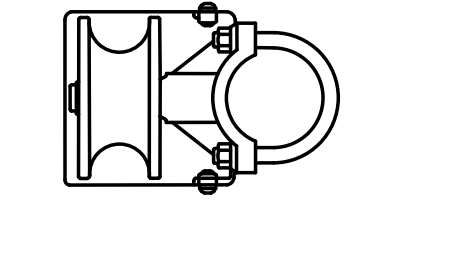
**GATE LATCH**



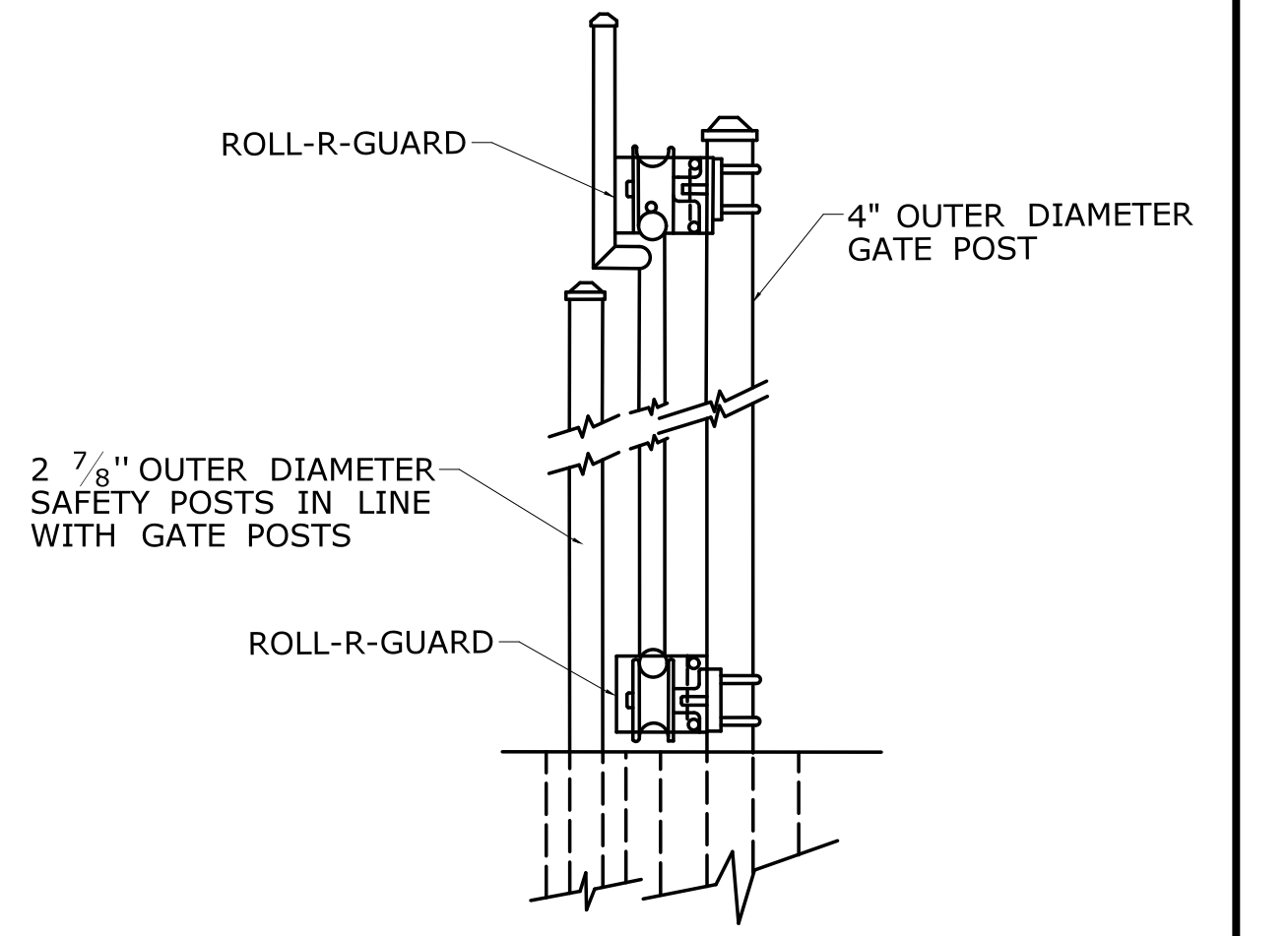
**ROLLER ASSEMBLY WITH ROLL-R-GUARD (TOP)**



**ROLLER ASSEMBLY (GUARD NOT SHOWN)**

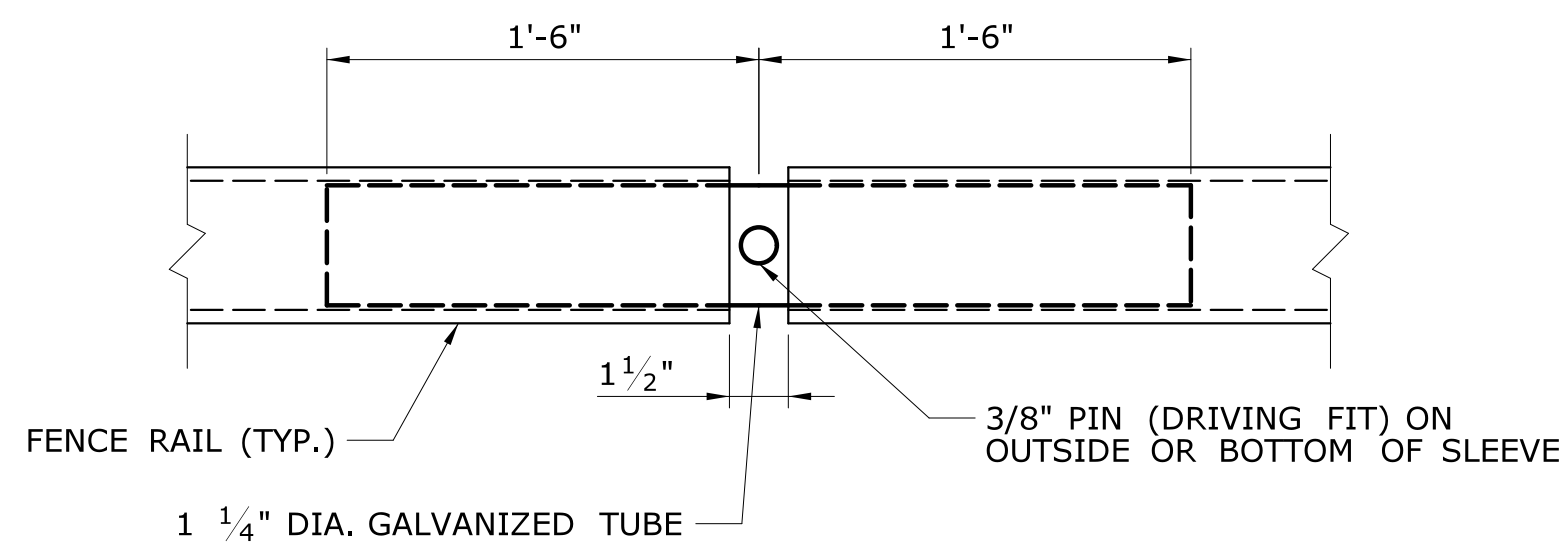


**ROLLER ASSEMBLY WITH ROLL-R-GUARD (BOTTOM)**

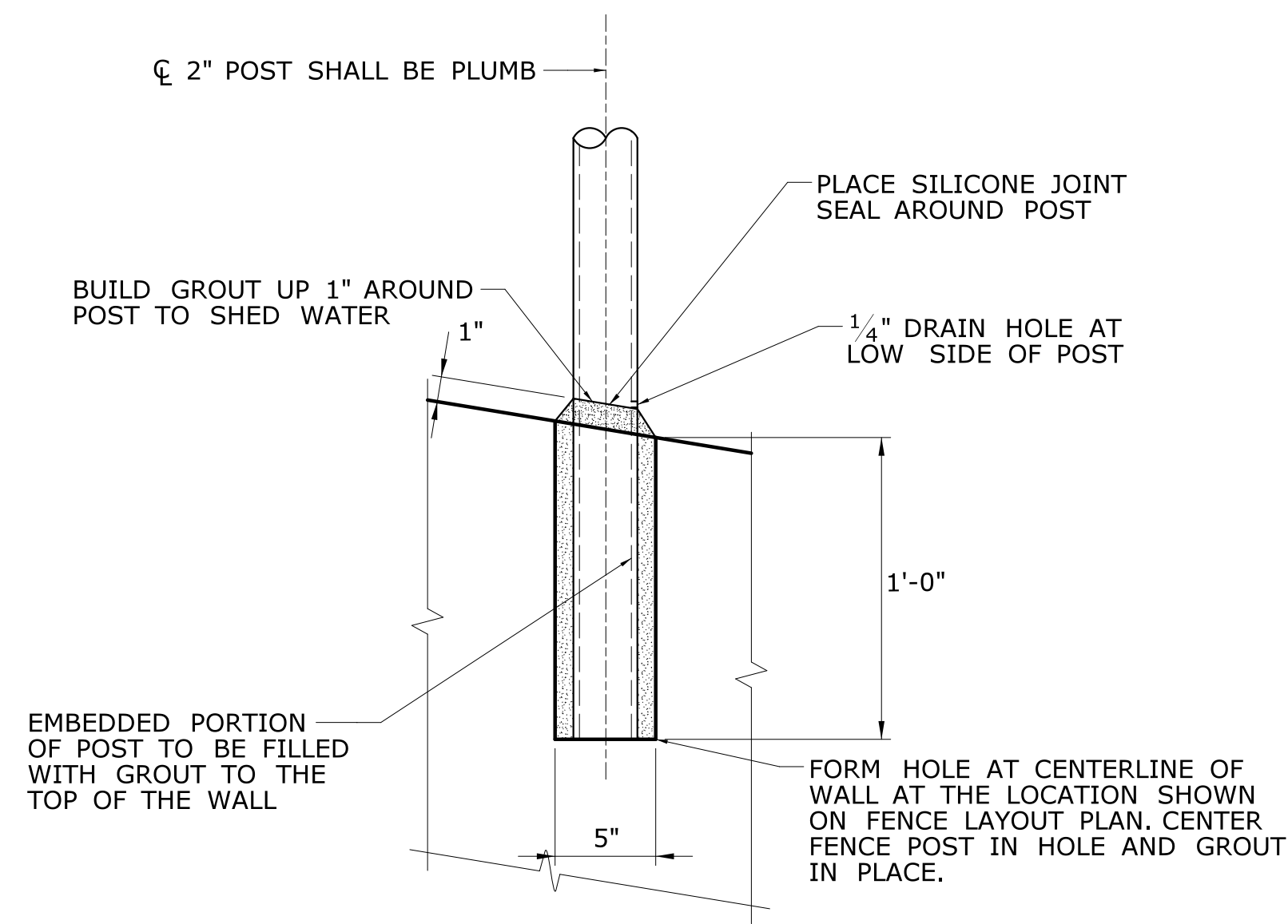


**SECTION AT GATE POSTS WITH ROLLER COVERS/GUARDS AND SAFETY POSTS**

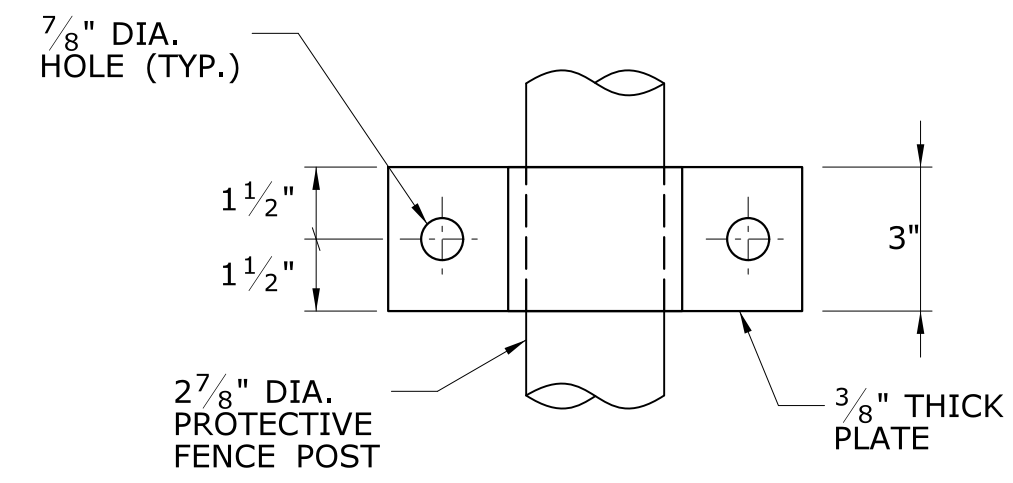




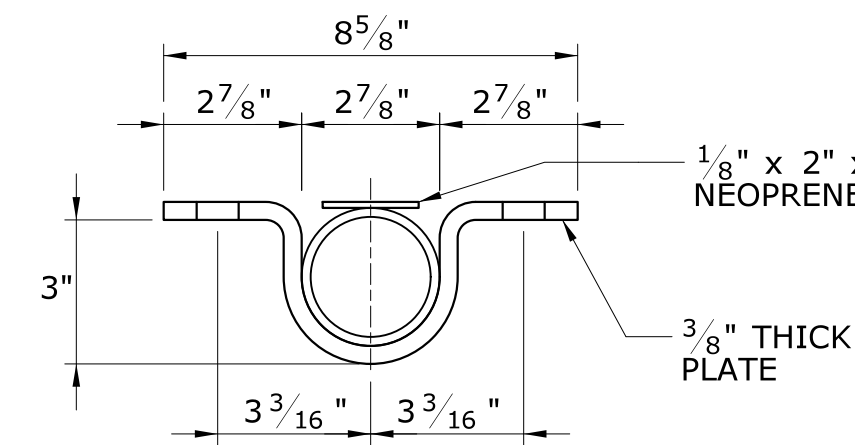
**FENCE RAIL EXPANSION**



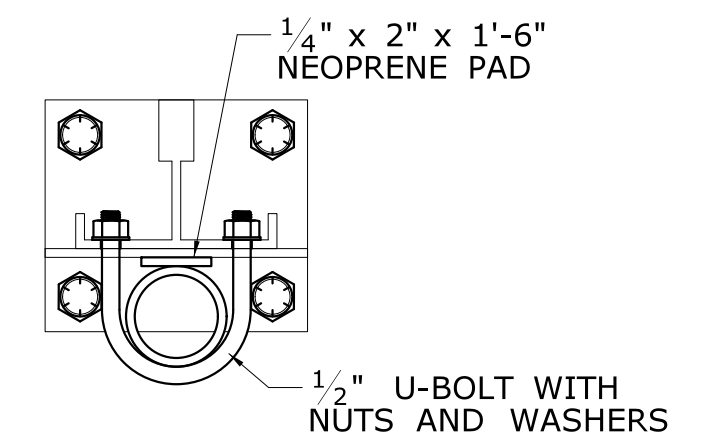
**DRILL AND GROUT POST**



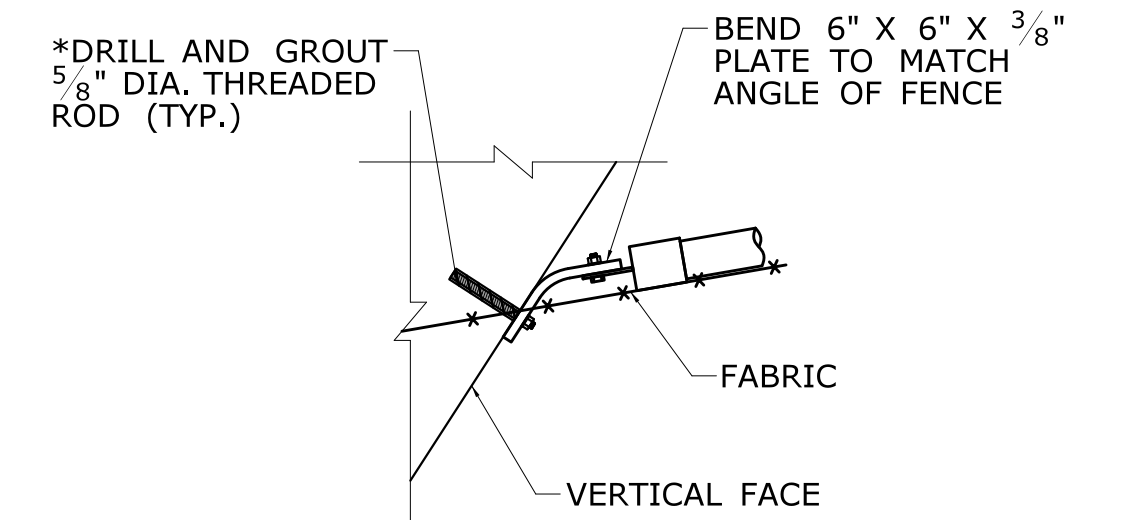
**ELEVATION**



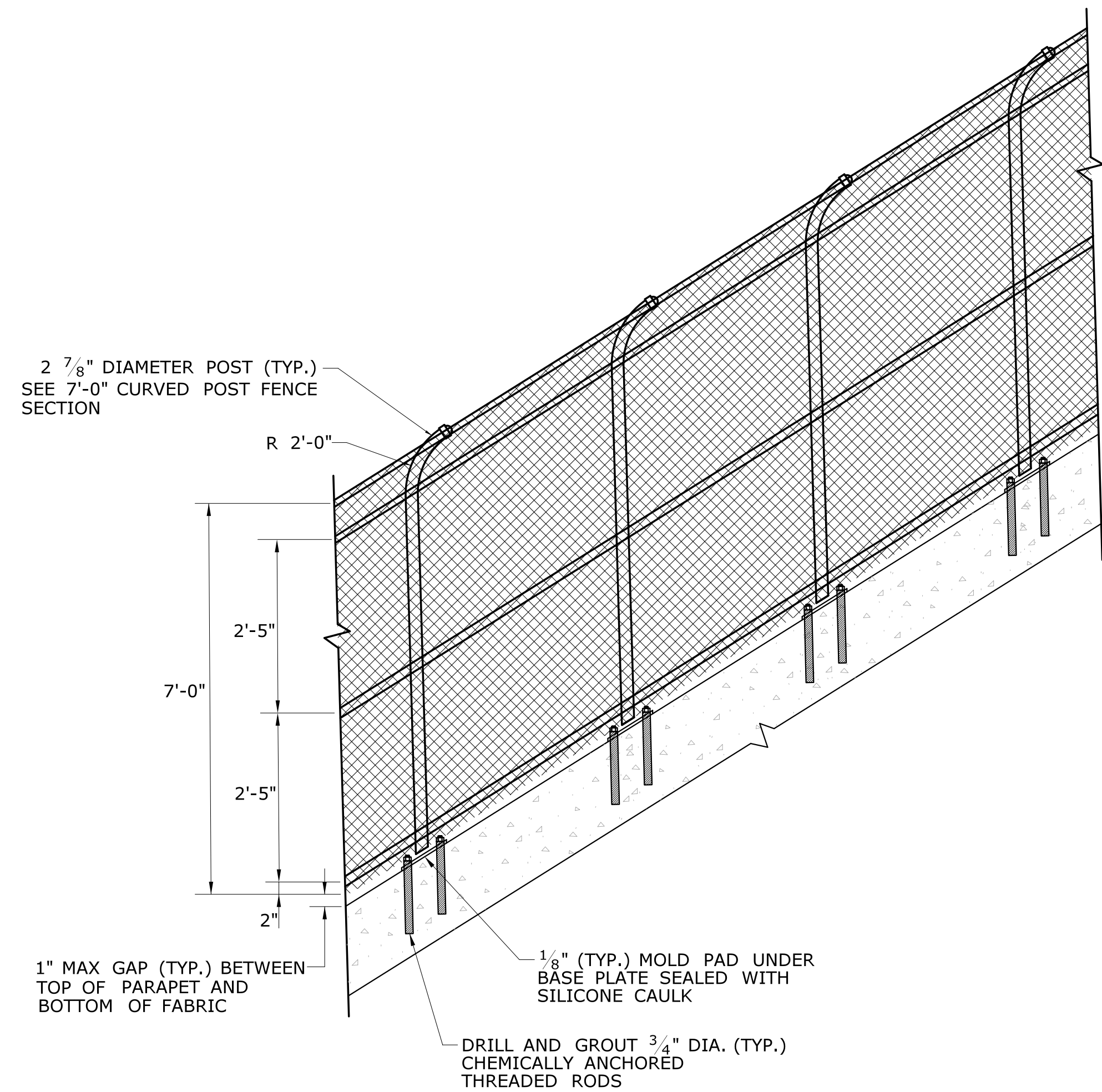
**PLAN POST CLAMP**



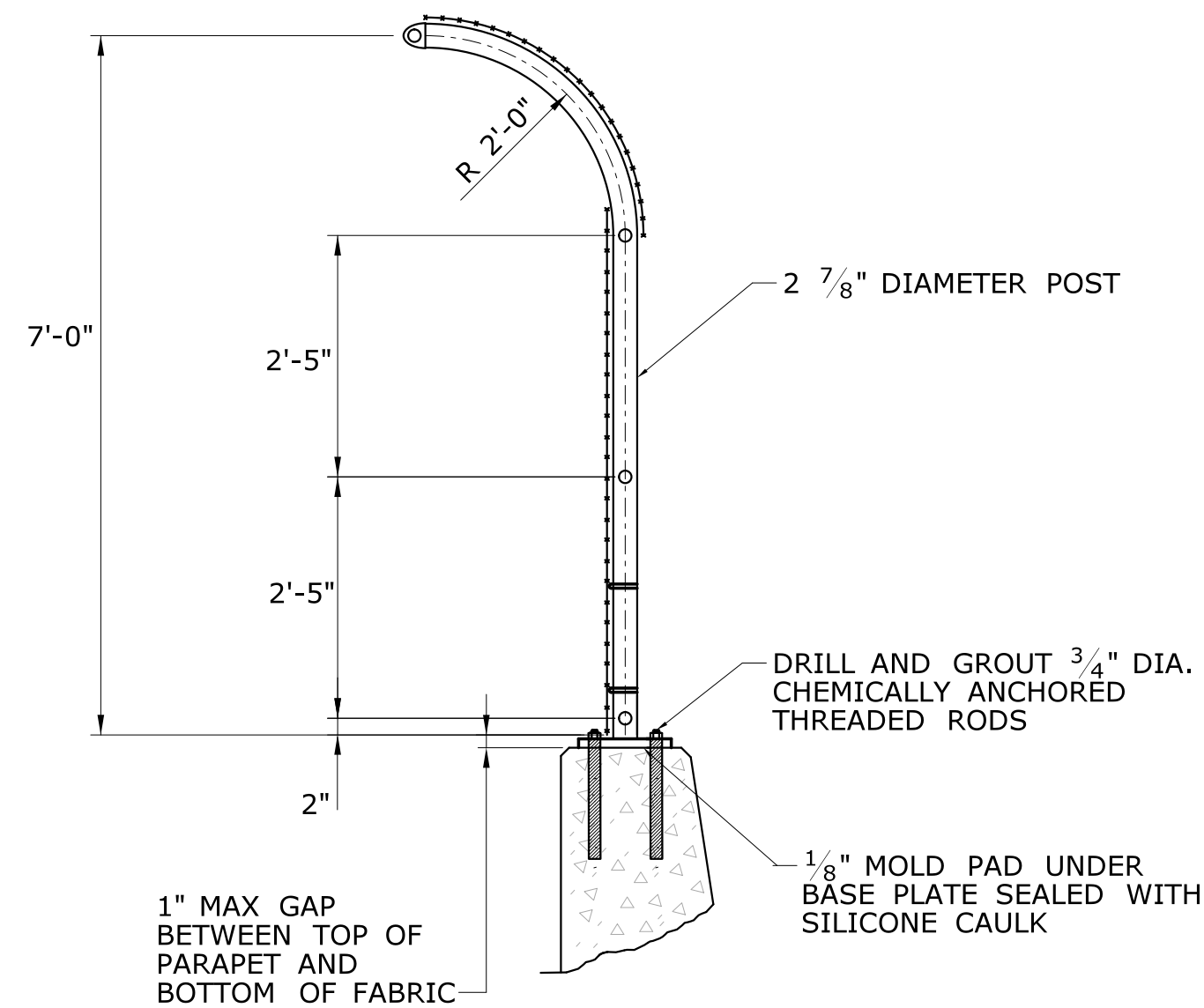
**PLAN - CONNECTION**



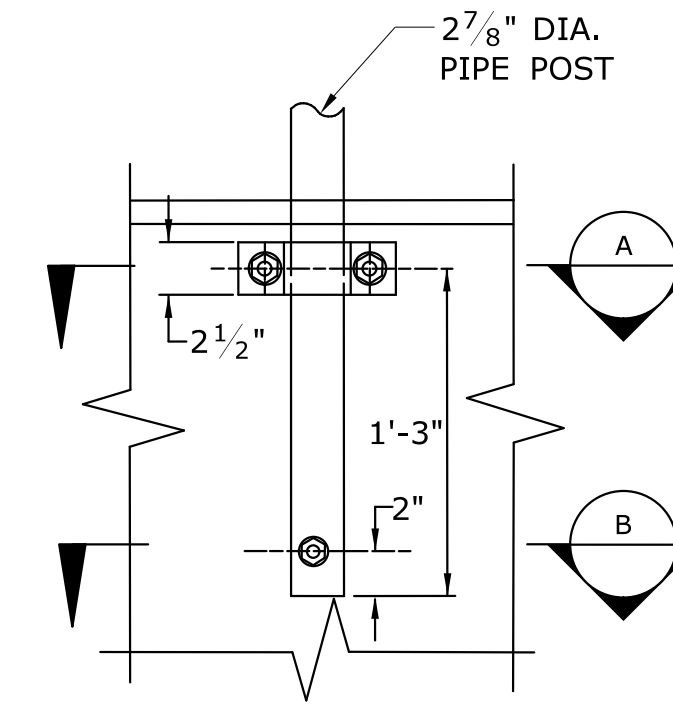
**PLAN**



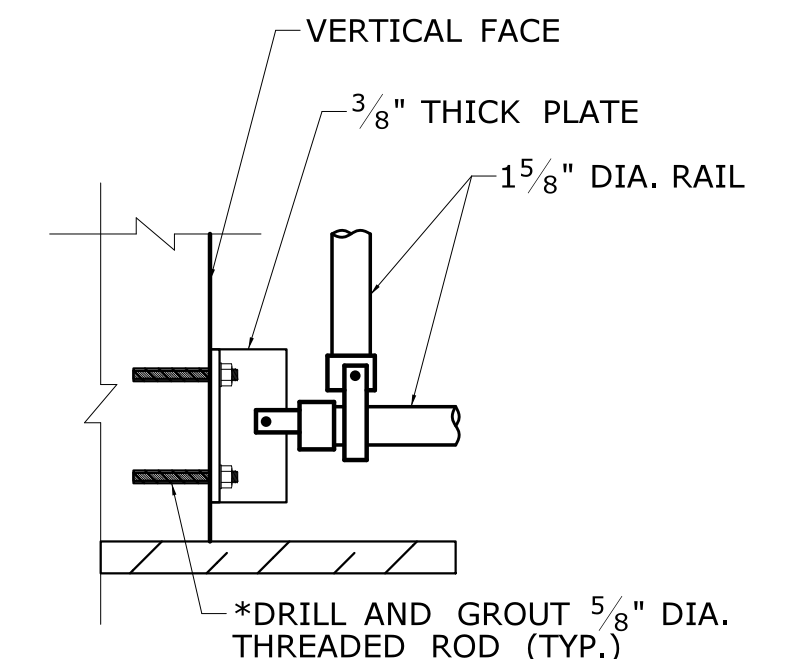
**7'-0" CURVED POST FENCE SIDE VIEW**



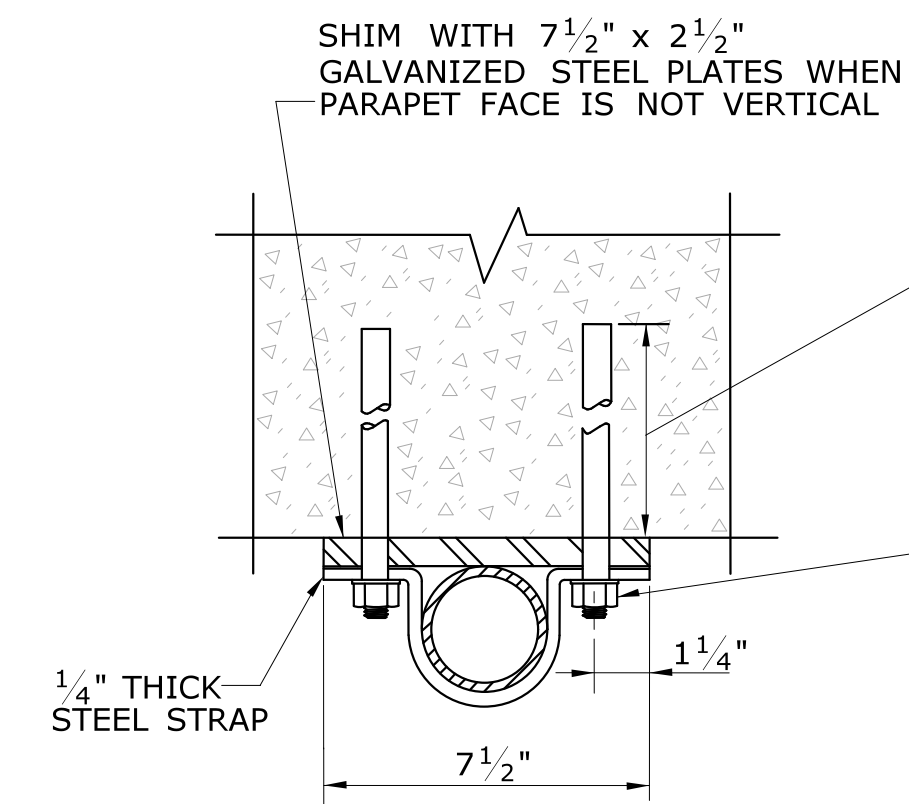
**7'-0" CURVED POST FENCE SECTION**



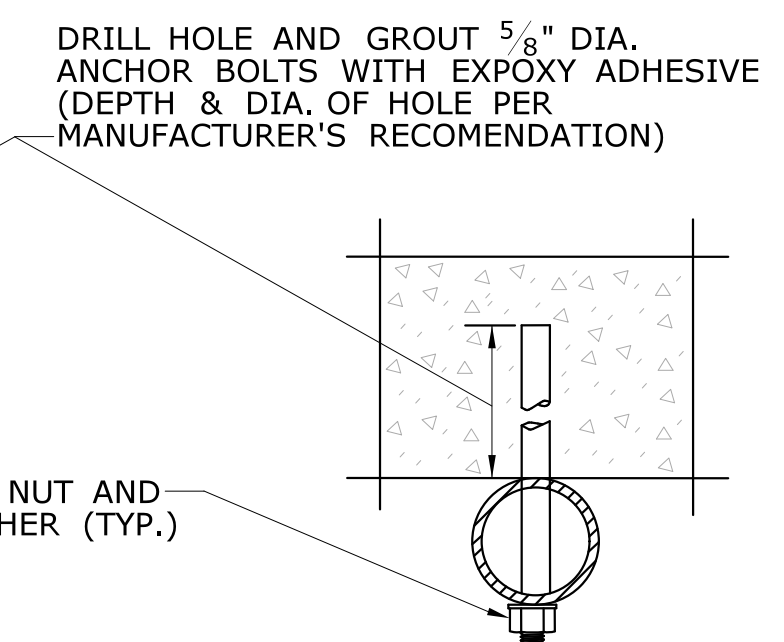
**ELEVATION**



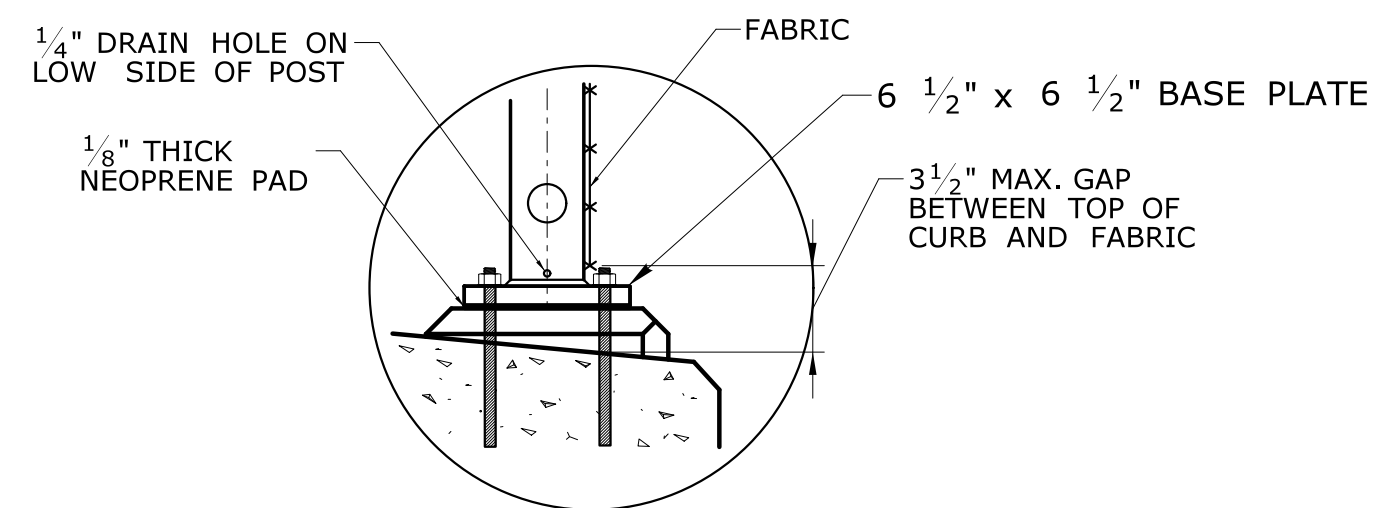
**ELEVATION CURB END ATTACHMENT**



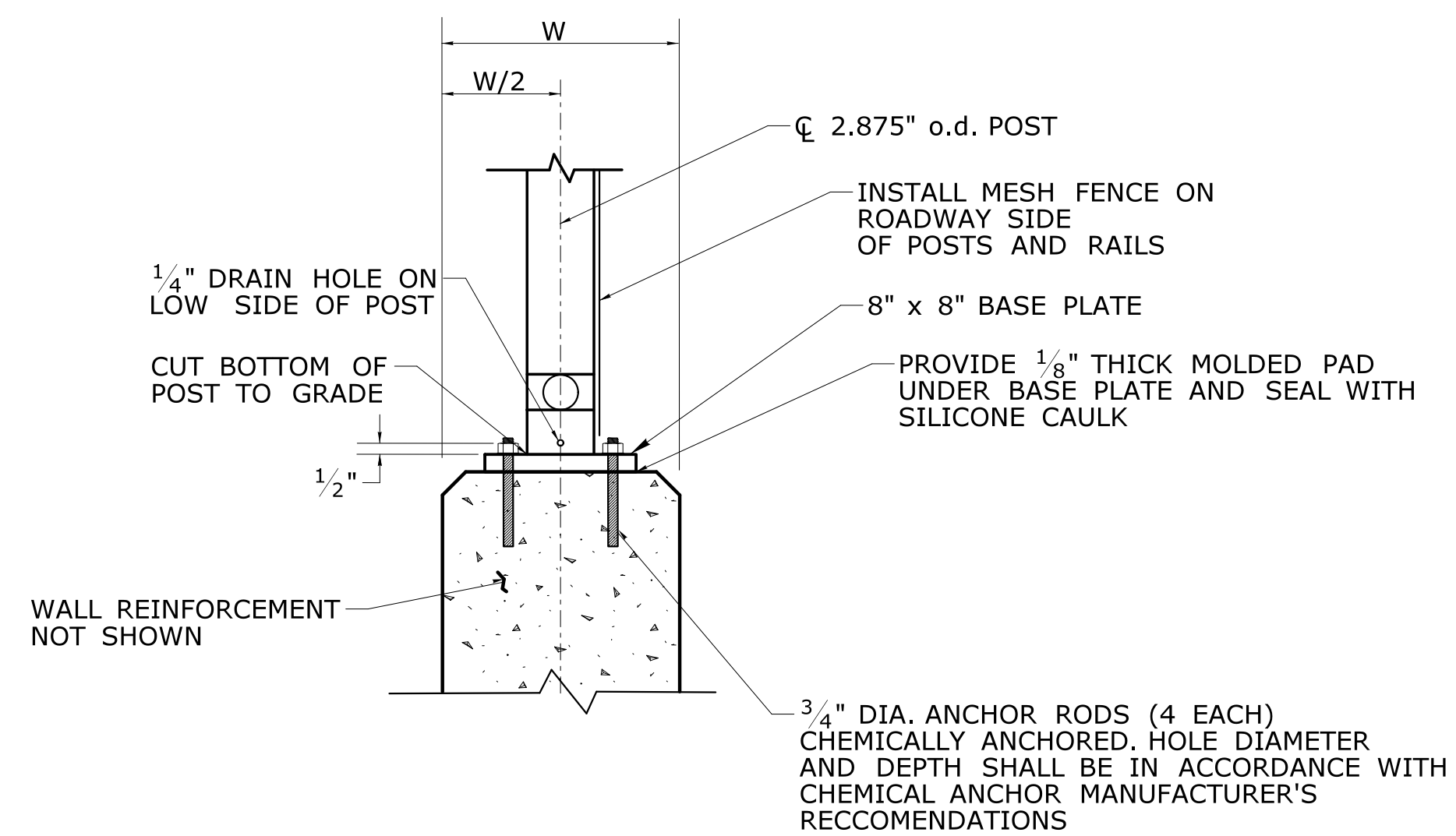
**SECTION A**



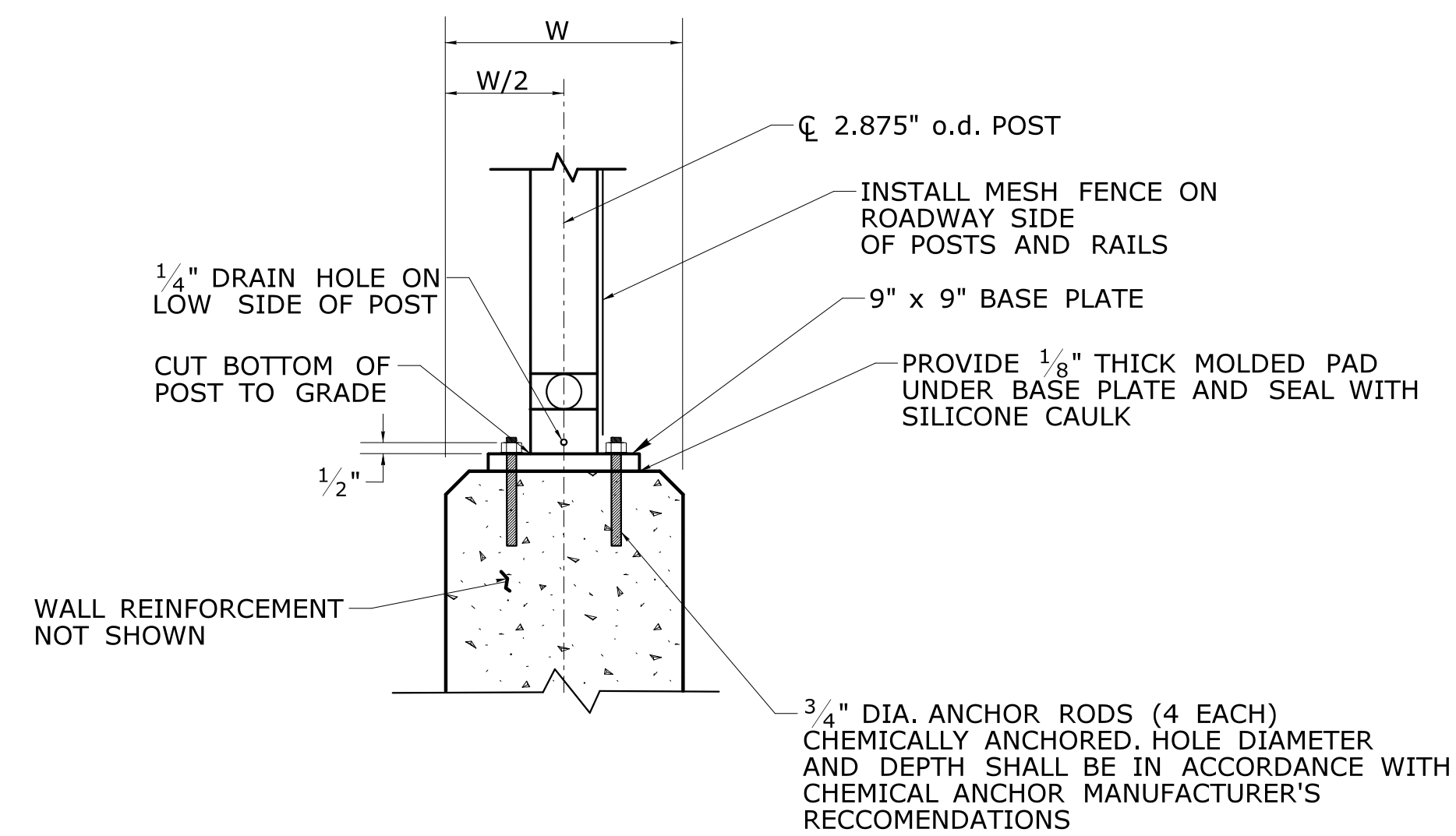
**SECTION B**



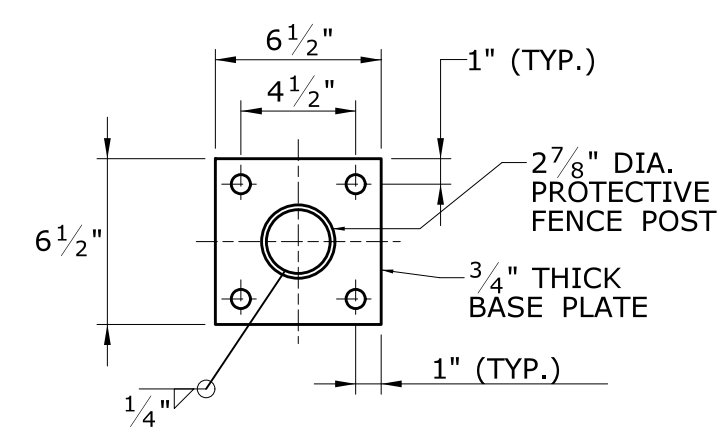
**TYPICAL BRIDGE PARAPET ANCHOR**



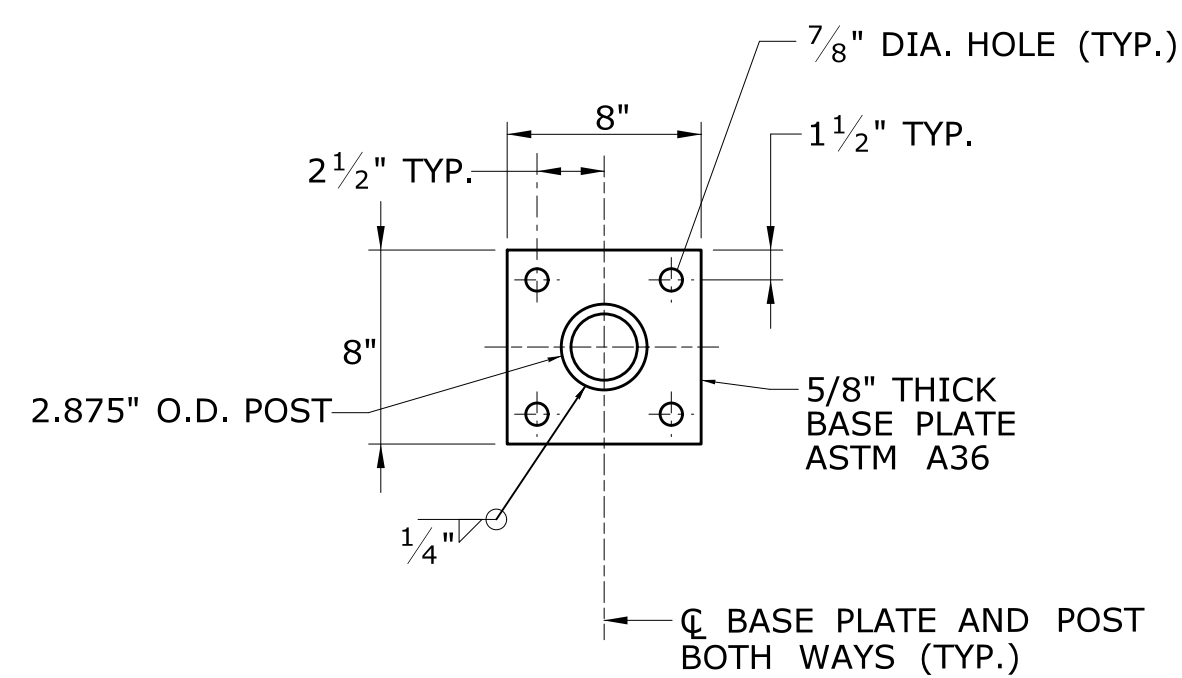
**TYPICAL BRIDGE PARAPET ANCHOR**



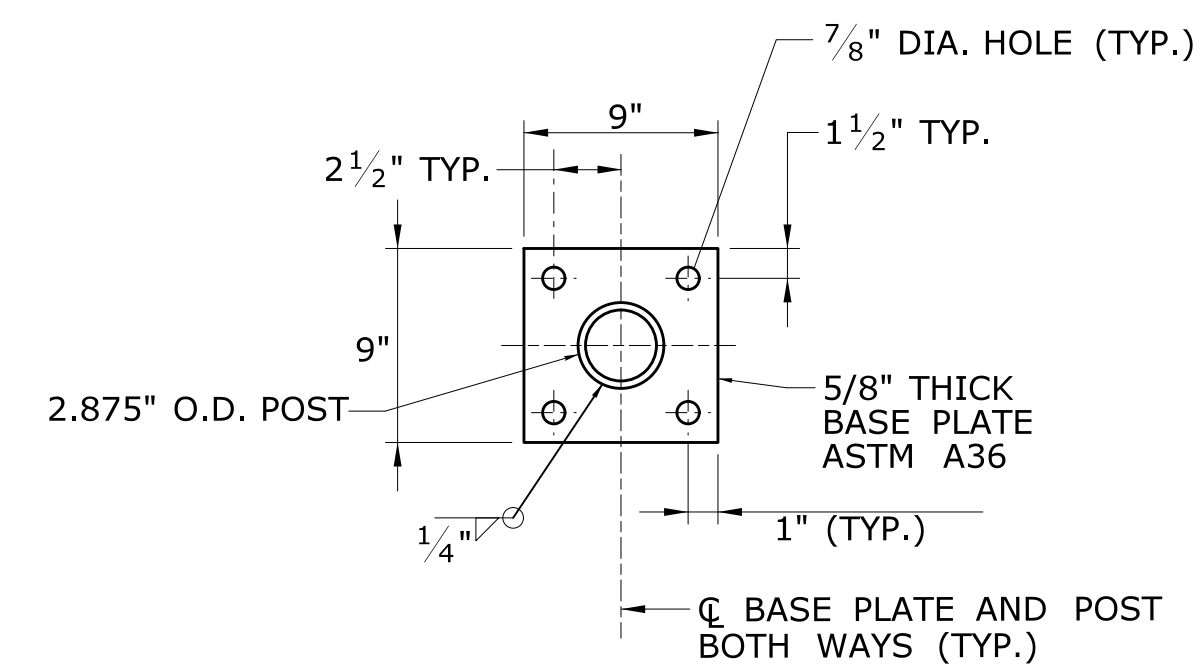
**TYPICAL BRIDGE PARAPET ANCHOR**



**BASE PLATE (6 1/2" x 6 1/2") AND POST**



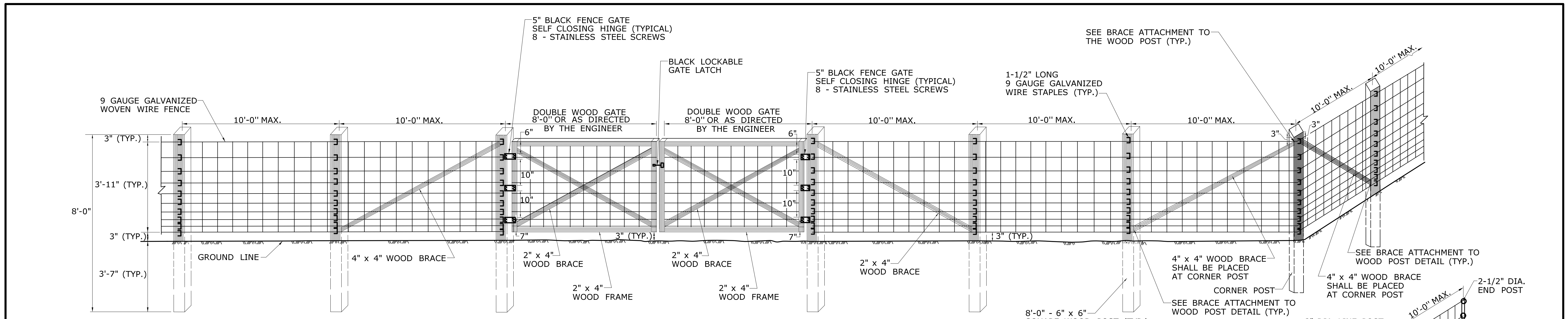
**BASE PLATE (8" x 8") AND POST ASSEMBLY**



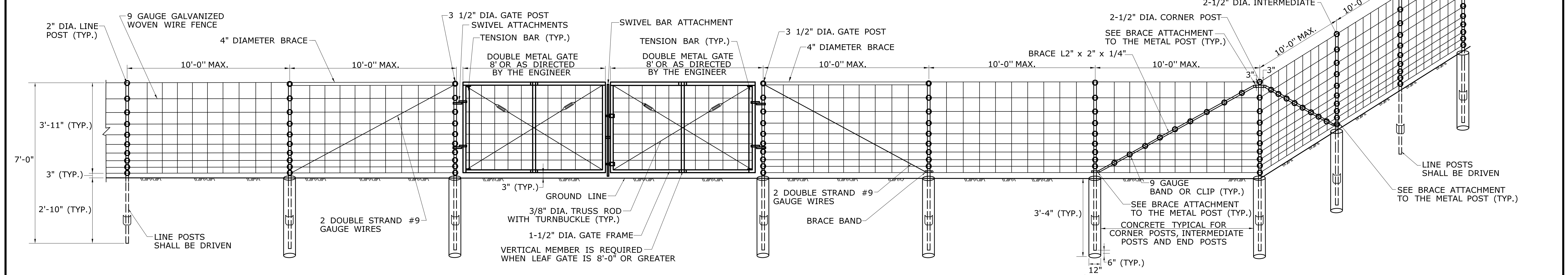
**BASE PLATE (9" x 9") AND POST ASSEMBLY**



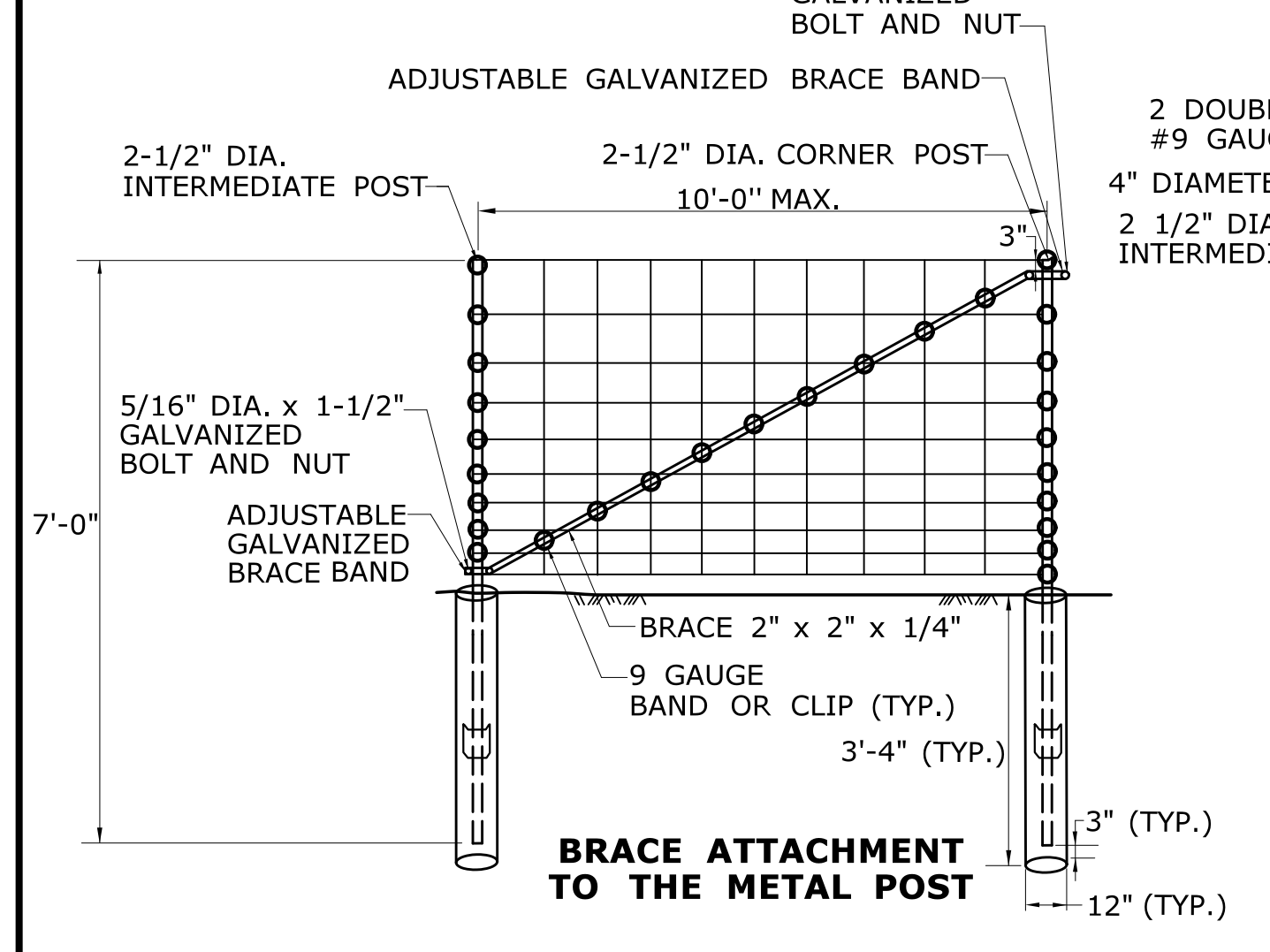




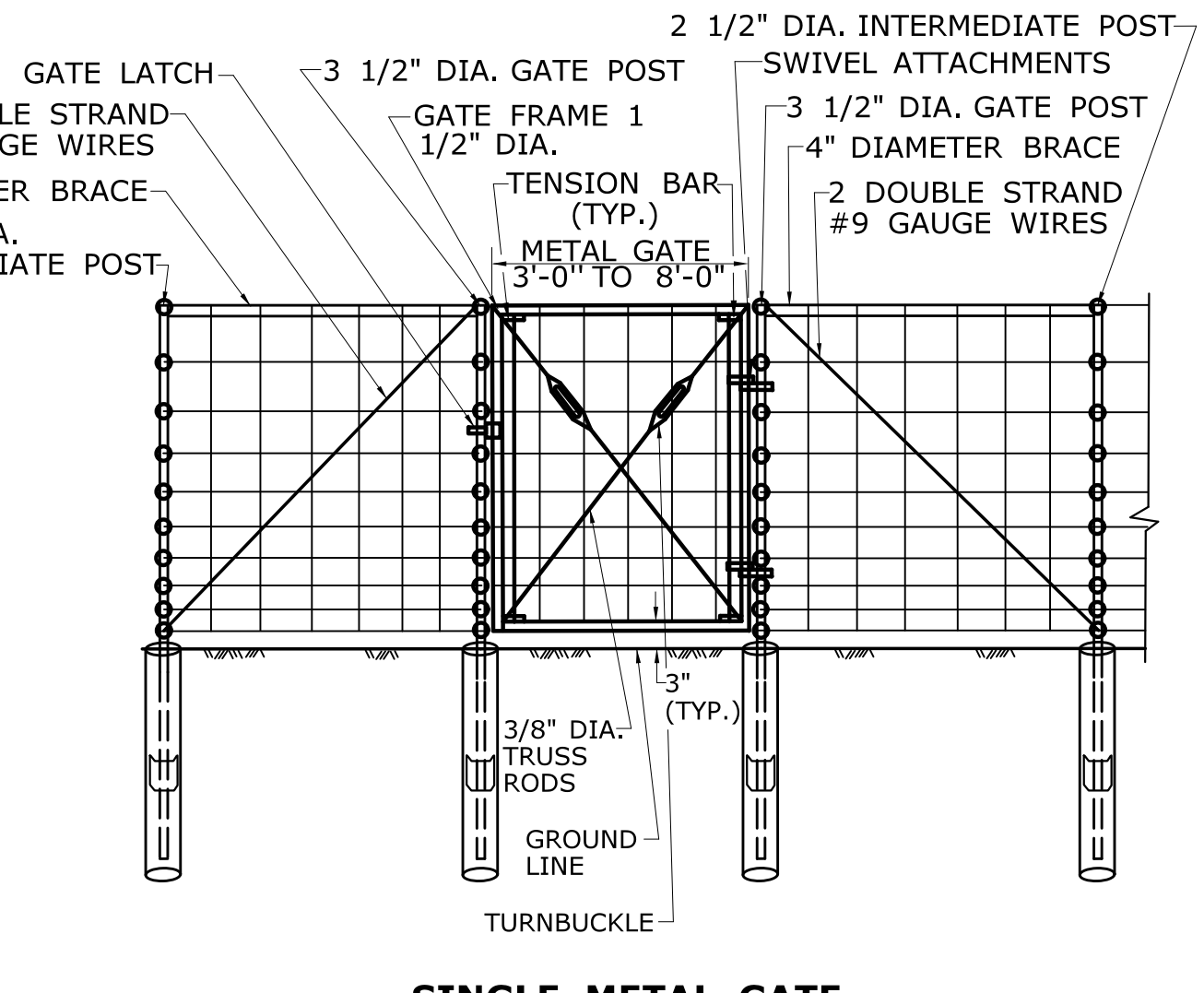
**WIRE FENCE WITH WOOD POST AND DOUBLE WOOD GATE**



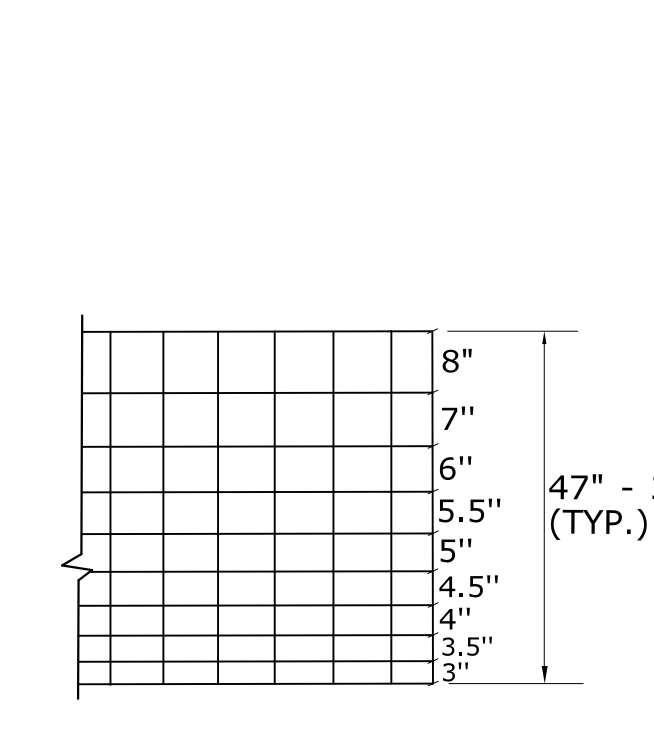
**WIRE FENCE WITH METAL POST AND DOUBLE METAL GATE**



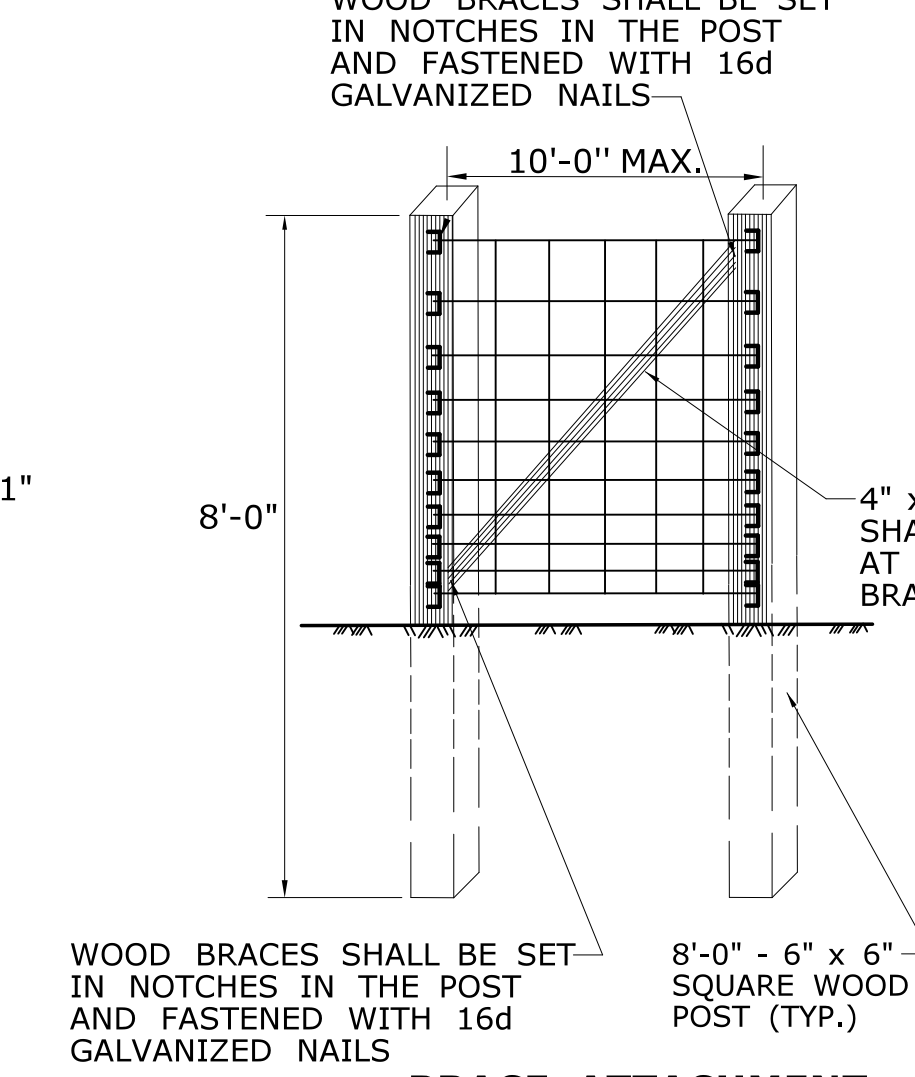
**BRACE ATTACHMENT TO THE METAL POST**



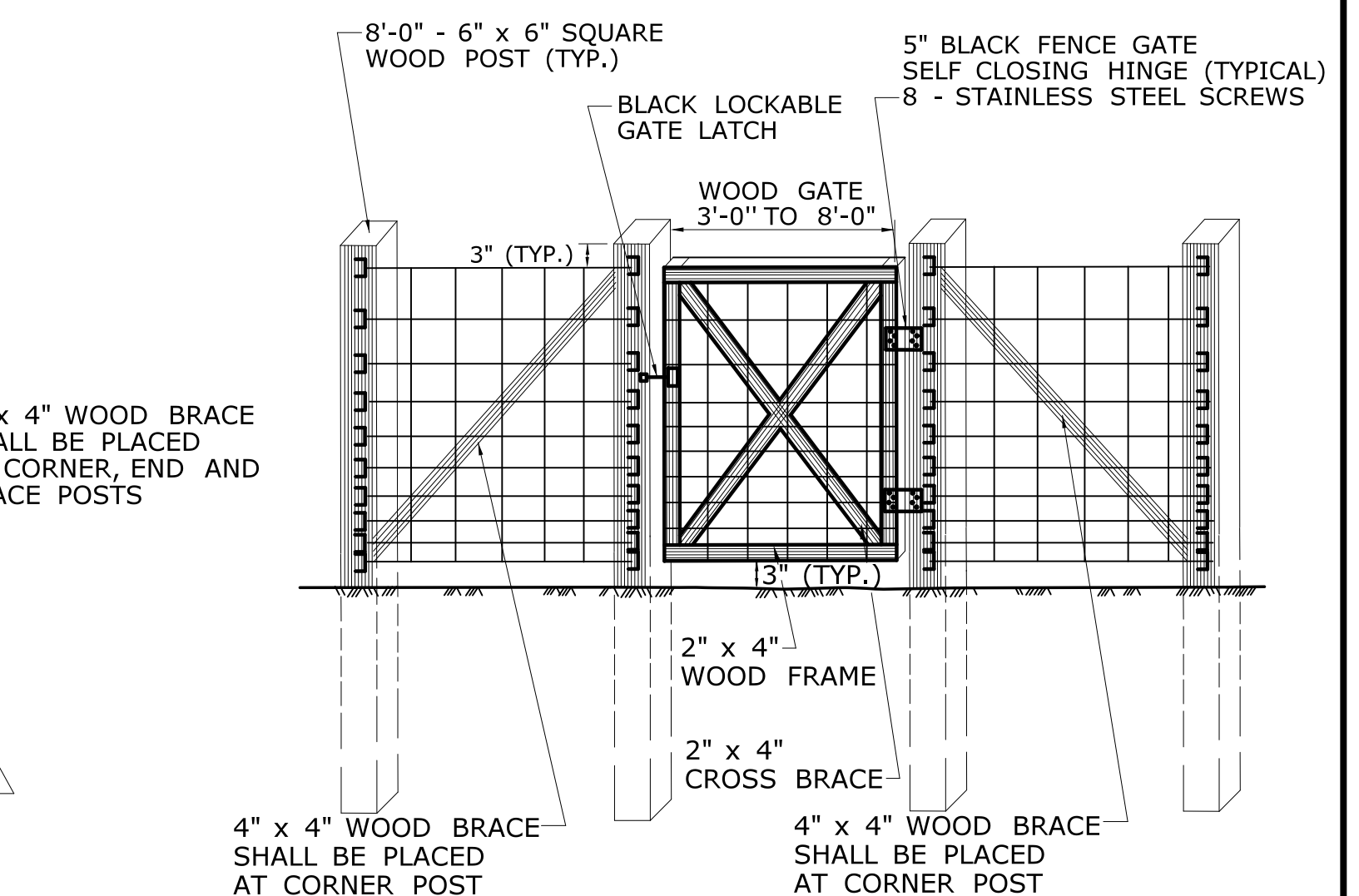
**SINGLE METAL GATE**



**WIRE FENCE SPACING**



**BRACE ATTACHMENT TO THE WOOD POST**



**SINGLE WOOD GATE**

1 10/17/18 NEW SHEET		DESIGNER/DRAFTER: <b>MS</b>	<p><b>STATE OF CONNECTICUT</b> <b>DEPARTMENT OF TRANSPORTATION</b></p>	SIGNATURE/BLOCK:	PROJECT TITLE:	TOWN:	PROJECT NO.:
		CHECKED BY: <b>EL</b>		<b>OFFICE OF ENGINEERING</b>	APPROVED BY:		DRAWING TITLE:
THE INFORMATION, INCLUDING ESTIMATED QUANTITIES OF WORK, SHOWN ON THESE SHEETS IS BASED ON LIMITED INVESTIGATIONS BY THE STATE AND IS IN NO WAY WARRANTED TO INDICATE THE CONDITIONS OF ACTUAL QUANTITIES OF WORK WHICH WILL BE REQUIRED.						<b>WIRE FENCE WITH GATES</b>	SHEET NO.:
REV.	DATE	REVISION DESCRIPTION	SHEET NO.	Plotted Date: 4/16/2019	Filename: ...Wire Fence with Gates.dgn		<b>WFG-1</b>