

UCONN HEALTH
FARMINGTON, CONNECTICUT

FUEL OIL TANK PERMANENT CLOSURE
AND PIPING REPLACEMENT
PARKING LOT A3

PROJECT NO.: 18-602.02

DRAWING INDEX

GENERAL

- G-1 LEGEND, SYMBOLS, AND GENERAL NOTES
- G-2 CONTRACTOR STAGING PLAN AND LIMITS OF CONSTRUCTION
- G-3 EROSION CONTROL PLAN

CIVIL

- C-1 EXISTING CONDITIONS PLAN
- C-2 DEMOLITION PLAN
- C-3 PIPING LAYOUT PLAN
- C-4 SURFACE RESTORATION PLAN

DETAILS

- D-1 DETAILS I
- D-2 DETAILS II

**UCONN
HEALTH**



LOCATION PLAN
NOT TO SCALE

MAY 2019

**CDM
Smith**



EAST HARTFORD, CONNECTICUT

Water

Environment

Transportation

Energy

Facilities

EXISTING CONDITIONS

SYMBOL LEGEND

- Curbless Catch Basin
- Curbed Catch Basin
- Double Curbed Catch Basin (Typ. 1 / 2)
- Double Curbless Catch Basin (Typ. 1 / 2)
- Round Drain
- Square Drain
- Storm Drain Manhole
- Electric Manhole
- Sanitary Manhole
- Steam Manhole
- Telephone Manhole
- Water Manhole
- Manhole (of unknown type)
- Hand Hole (Sq. / Rec.)
- Water Valve
- Gas Valve
- Hydrant
- Combo Standpipe
- Guy Wire
- Sign (single post)
- Sign (double post)
- Boring (as drilled)
- Boring (as staked)
- Spot Elevation
- Wetlands Flag
- Property Monument
- Key Card
- Iron Pipe or Rebar Found
- Irrigation Control Box
- Emergency Phone
- Traffic Controller Cabinet
- Utility Pole
- Utility Pole w/ Light
- Street Light
- Light Post
- Bollard Light
- Boulder / Rock
- Conifer Shrub
- Deciduous Shrub
- Deciduous Tree (sapling)
- Deciduous Tree
- Conifer Tree
- Test Pit (as excavated)
- Electrical Road Box
- Interior Building Room ID

ABBREVIATIONS

- A/G Air Conditioner
- AT&T American Telephone & Telegraph Company
- BIT. Bituminous
- BLK. Black
- CB Catch Basin
- COM Communication
- COND Conduit
- CONC. Concrete
- CNG Connecticut Natural Gas
- CL Centerline
- CLF Chain Link Fence
- CC Concrete Curb
- CP Control Point
- DB Ductbank
- DMH Drainage Manhole
- E East or Electric
- EL Electric
- ELEV Elevation
- EMH Electric Manhole
- F.L. Flow Line
- FND. Found
- GRAN. Granite
- GSTC Granite Stone Curb
- HELCO Hartford Electric Company
- HYD. Hydrant
- H.H. Hand Hole
- L.P. Light Pole
- MH Manhole
- M Meter
- M.W. Monitor Well
- N North
- NAD North American Datum
- NAVD National American Vertical Datum
- NE Northeast
- N/F Now or Formerly
- NW Northwest
- PVC Polyvinyl Chloride
- P.I.V. Post Indicator Valve
- RET. Retaining
- RCP Reinforced Concrete Pipe
- R.L. Rain Leader
- S South or Supply
- SE Southeast
- SW Southwest
- SAN. Sanitary
- SMH Sanitary Manhole
- SQ. Square
- STM Steam
- TMH Telephone Manhole
- TEL. Telephone
- T.F. Top of Frame
- UNK. Unknown
- V.P. Vent Pipe
- W Water or West
- W.G. Water Gate

FEATURE LINES

- Curbed Roadway
- Edge of Paved Road
- Stockade Fence
- Chain Link/Wire Fence
- Tree/Vegetation Line
- Intermediate Contour
- Index Contour
- Surface Water (Watercourse)
- Wetlands Limit

UTILITY SERVICES

- Electric Service
- Gas Pipes
- Sanitary Sewer Pipes
- Storm Water Pipes
- Steam Pipes (supply & cond.)
- Telephone Service
- Water Pipes
- Communication/Fiber Optic Service
- Fire Protection Pipes
- Overhead Wires
- Chilled Water Supply
- Chilled Water Return
- High Temperature Hot Water Supply
- High Temperature Hot Water Return
- Oxygen Supply

NEW WORK

- NEW PIPING
- TEMPORARY CONSTRUCTION FENCE
- LIMITS OF EXCAVATION
- LIMITS OF DEMOLITION (BASE BID)
- LIMITS OF DEMOLITION (ALTERNATIVE BID)
- RESTRICTED PARKING ZONE
- TEMPORARY TRAFFIC CONTROL BARRIER
- COMPOST SOCK
- LIMITS OF PAVEMENT

GENERAL DEMOLITION NOTES:

- REFER TO DEMOLITION PLAN, SURFACE RESTORATION PLAN, AND EROSION CONTROL PLAN FOR ADDITIONAL INFORMATION.
- CONTRACTOR SHALL DEMOLISH AND REMOVE ANY AND ALL ITEMS AS REQUIRED TO CONSTRUCT WORK AT NO ADDITIONAL COST TO THE OWNER.
- EXCAVATION OPERATIONS SHALL BE EXECUTED CAREFULLY AT ALL LOCATIONS ADJACENT TO EXISTING UNDERGROUND UTILITIES AND VAULTS. PROTECTION OF EXISTING UTILITIES WITHIN THE WORK LIMIT SHALL BE THE RESPONSIBILITY OF THE CONTRACTOR. ALL WORK SHALL BE COORDINATED WITH THE APPROPRIATE UTILITY COMPANIES.
- ALL AREAS DISTURBED BY THE CONTRACTOR SHALL BE RESTORED TO THEIR ORIGINAL CONDITION OR AS INDICATED ON THE CONTRACT DRAWINGS.
- ANY DAMAGE TO EXISTING PAVEMENT, CURBS, SIDEWALKS, RETAINING WALL, STRUCTURES OR ANY OTHER APPURTENANCES SHALL BE REPLACED (IN-KIND OR BETTER) BY THE CONTRACTOR AS DIRECTED BY THE ENGINEER AT THE CONTRACTOR'S EXPENSE. SAW-CUT DAMAGED SECTIONS BACK TO THE NEAREST JOINT WHERE APPROPRIATE AND MATCH EXISTING MATERIALS, THICKNESS, AND PATTERNS.
- CONTRACTOR SHALL SAW-CUT BITUMINOUS SURFACES AT LIMITS OF DEMOLITION AS REQUIRED TO ACHIEVE A SMOOTH TRANSITION BETWEEN EXISTING SURFACES (TO REMAIN) AND NEW SURFACES. APPLY/INSTALL TACK COATS AND EXPANSION JOINTS AS REQUIRED. ANY EXISTING SURFACES DIRECTLY ADJACENT TO THE LIMIT OF DEMOLITION, NOT PREVIOUSLY DAMAGED OR DETERIORATED AND DAMAGED BY CONTRACTOR SHALL BE REPLACED AT NO ADDITIONAL COST TO THE OWNER.
- CONTRACTOR TO COORDINATE ALL WORK WITH OWNER AND FOLLOW SAFETY PROCEDURES RECOMMENDED IN SAFETY DATA SHEETS (SDS), AS APPLICABLE.

CONSTRUCTION STAGING AND TRAFFIC CONTROL NOTES:

- THE CONTRACTOR WILL NEED TO PAY PARTICULAR ATTENTION TO THE STAGING OF EQUIPMENT AT THE SITE, PEDESTRIAN AND TRAFFIC CONTROL, AND EQUIPMENT ACCESS TO THE SITE. VEHICLE AND PEDESTRIAN ACCESS MUST BE MAINTAINED TO ALL AREAS OF THE SITE OUTSIDE OF THE CONSTRUCTION ZONE DURING CONSTRUCTION. THE CONTRACTOR WILL NOT BE ALLOWED TO BLOCK ANY ROADS OR PEDESTRIAN ACCESS WAY DURING MOBILIZATION, DEMOBILIZATION, AND DURING THE COURSE OF HIS WORK.
- CONTRACTOR SHALL MAINTAIN FLOW OF TRAFFIC THROUGH PARKING LOT AT ALL TIMES.
- DURING CONSTRUCTION ACTIVITIES, ALL EQUIPMENT, DELIVERIES, AND CONTRACTOR EMPLOYEE PARKING MUST OCCUR WITHIN THE LIMITS OF THE PARKING LOT UNDER CONSTRUCTION.
- DURING PAVING OPERATIONS ONLY, WHEN VEHICLE PARKING CANNOT OCCUR WITHIN THE LIMITS OF THE PARKING LOT, A REASONABLE NUMBER OF SPACES (AT THE DISCRETION OF UCONN HEALTH) WILL BE CONED OFF FOR CONTRACTOR USE ALONG THE ENTRANCE ROADS.
- CONTRACTOR SHALL TAKE WHATEVER MEASURES ARE REQUIRED TO PROTECT EXISTING PAVEMENT, RETAINING WALL, SIDEWALKS, CURBING, UTILITIES, AND OTHER SITE IMPROVEMENTS DURING MOBILIZATION, DEMOBILIZATION, AND DURING ALL CONSTRUCTION ACTIVITIES. CONTRACTOR SHALL NOT BE ALLOWED TO TRAVERSE EXISTING PAVED AREAS WITH TRACKED EQUIPMENT WITHOUT PROPER PROTECTION OF THE PAVEMENT.
- CONTRACTOR SHALL TAKE ALL NECESSARY PRECAUTIONS TO PROTECT OBJECTS FROM FALLING OVER THE RETAINING WALL.
- CONTRACTOR SHALL SUBMIT TRAFFIC CONTROL AND LOGISTICS PLAN TO OWNER FOR APPROVAL.

ODOR CONTROL AT SITE NOTES:

- UCONN HEALTH IS PARTICULARLY CONCERNED WITH POTENTIAL ODORS BEING GENERATED DURING CONSTRUCTION ACTIVITIES THAT COULD BE INTRODUCED INTO THE BUILDING THROUGH EXISTING AIR INTAKES AND ADVERSELY IMPACT THE QUALITY OF CARE WITHIN THE FACILITY. PAST MEASURES TO CONTROL AIR QUALITY HAVE CONSISTED OF INSTALLATION OF CARBON FABRIC OVER EXISTING AIR INTAKES, AND POSITIONING OF LARGE BARREL FANS TO DIRECT ODORS AWAY FROM AIR INTAKES.
- IF CARBON FABRIC IS REQUIRED, CONTRACTOR SHALL PROVIDE AND INSTALL AS NECESSARY.
- IF ODOR COMPLAINTS ARE RECEIVED, WORK MUST STOP IMMEDIATELY ON SITE UNTIL CARBON FABRIC IS INSTALLED OVER NEARBY AIR INTAKES, AND BARREL FANS ARE POSITIONED TO DIRECT AIR FLOW TO AIR INTAKES FROM NON-CONSTRUCTION DIRECTION. CONTRACTOR TO PROVIDE USE OF TWO BARREL FANS, LABOR FOR INSTALLATION OF CARBON FABRIC OVER AIR INTAKES, BARREL FAN INSTALLATION AND THE REQUIRED ELECTRICAL CORDS FROM THE ELECTRICAL OUTLETS TO THE FANS.
- CONTRACTOR SHALL MINIMIZE IDLING OF VEHICLES ON SITE DURING CONSTRUCTION OPERATIONS.

SURVEY NOTES:

- REFERENCE PLAN: "UCONN HEALTH PARKING LOT REPAIRS - LOTS A, B & C, 263 FARMINGTON AVENUE, PROJECT NO. 17-603-01" AS-BUILT PLANS DATED APRIL 2, 2018. UTILITIES ARE APPROXIMATE AND SHALL BE VERIFIED.
- ELEVATIONS ARE BASED ON THE N.A.V.D. 1988 SYSTEM.
- ENGAGE A PRIVATE UTILITY MARK-OUT COMPANY TO CONFIRM UTILITIES.

GENERAL NOTES:

- THE INFORMATION PROVIDED WITHIN IS BASED ON BEST AVAILABLE DATA TO ENGINEER. IT IS THE RESPONSIBILITY OF THE CONTRACTOR TO FIELD DETERMINE AND VERIFY ALL INFORMATION SHOWN ON THE DRAWINGS FOR WORK SPECIFIED OR CALLED OUT ON THE DRAWINGS.
- CONTRACTOR TO COORDINATE WITH UCONN HEALTH PERSONNEL WHEN EXECUTING ANY AND ALL WORK ASSOCIATED WITH FUEL TANK OR FUEL LINE ABANDONMENT OR REPLACEMENT.
- PART OF THE WORK INCLUDES REPLACING FUEL LINES WHICH ARE CURRENTLY THE ONLY SOURCE OF FUEL FOR BACKUP GENERATORS FOR THE FACILITY. MEASURES MUST BE TAKEN BY THE CONTRACTOR TO ENSURE THAT FUEL BE ACCESSIBLE FOR THE GENERATORS AT ALL TIMES IN THE EVENT OF A POWER OUTAGE AT THE FACILITY.
- CONTRACTOR PM AND SUPERINTENDENT TO ATTEND MANDATORY PRE-CONSTRUCTION CONFERENCE PRIOR TO START OF WORK.
- ALL WORK SHALL CONFORM TO THE PROJECT SPECIFICATIONS AND THE CONNECTICUT DEPARTMENT OF TRANSPORTATION STANDARD SPECIFICATIONS FOR ROADS, BRIDGES AND INCIDENTAL CONSTRUCTION. FORM 816, DATED 2004, WITH SUPPLEMENTAL SPECIFICATIONS DATED JULY 2015.
- EXISTING CONDITIONS MAY VARY FROM THOSE SHOWN ON THESE PLANS. PRIOR TO CONSTRUCTION, THE CONTRACTOR SHALL VERIFY EXISTING CONDITIONS AND NOTIFY ENGINEER IMMEDIATELY IF THERE ARE ANY DISCREPANCIES BETWEEN THE CONTRACT DOCUMENTS AND/OR THE FIELD CONDITIONS SO THAT APPROPRIATE REVISIONS CAN BE MADE. THE CONTRACTOR SHALL NOT PROCEED WITH SUCH WORK UNTIL THE ENGINEER HAS BEEN CONTACTED FOR CLARIFICATION AND PROPER DIRECTION.
- EXISTING TOPOGRAPHY, STRUCTURES, AND THE SITE FEATURES ARE SHOWN SCREENED AND/OR LIGHT-LINED. NEW FINISH GRADE, STRUCTURES, AND SITE FEATURES ARE SHOWN HEAVY-LINED.
- THE LOCATIONS AND ELEVATIONS OF EXISTING UTILITIES ARE SHOWN IN AN APPROXIMATE MANNER ONLY AND HAVE NOT BEEN INDEPENDENTLY VERIFIED BY THE ENGINEER. THE CONTRACTOR SHALL DETERMINE THE EXACT LOCATION OF ALL EXISTING UTILITIES BEFORE COMMENCING WORK, AND AGREES TO BE FULLY RESPONSIBLE FOR ANY AND ALL DAMAGES WHICH MIGHT OCCUR DUE TO THE CONTRACTORS FAILURE TO EXACTLY LOCATE AND PRESERVE ANY AND ALL UNDERGROUND UTILITIES.
- THE CONTRACTOR SHALL CONTACT "CALL BEFORE YOU DIG" LOCATING SERVICE AT 811 OR 1-800-922-4455 AT LEAST SEVENTY-TWO (72) HOURS PRIOR TO THE START OF CONSTRUCTION IN ORDER TO HAVE ALL UTILITIES LOCATED AND MARKED.
- UNFORESEEN UTILITY WORK SHALL BE DONE IN ACCORDANCE WITH THE RESPECTIVE UTILITY'S REQUIREMENTS AND STANDARDS. IT WILL BE THE CONTRACTORS RESPONSIBILITY TO COORDINATE UTILITY RELATED WORK WITH THE RESPECTIVE UTILITY COMPANY.
- REPLACE EXISTING SURVEY MONUMENTS WHICH ARE DISTURBED OR DESTROYED BY CONSTRUCTION OPERATIONS. PERFORM THE WORK TO PRODUCE THE SAME LEVEL OF ACCURACY AS THE ORIGINAL MONUMENT(S) IN A TIMELY MANNER, AND AT THE CONTRACTORS EXPENSE.
- PROVIDE TEMPORARY FENCING AS NECESSARY TO MAINTAIN SECURITY AT ALL TIMES.
- ELEVATIONS GIVEN ARE TO FINISH GRADE UNLESS OTHERWISE SHOWN.
- SLOPE UNIFORMLY BETWEEN CONTOURS AND SPOT ELEVATIONS SHOWN.
- THE CONTRACTOR SHALL PROVIDE AS-BUILT RECORDS OF ALL CONSTRUCTION (INCLUDING UNDERGROUND UTILITIES) TO THE ENGINEER AT THE END OF CONSTRUCTION. CONTRACTOR TO REFER TO SPECIFICATIONS SECTION 017839.
- ANY UTILITIES DAMAGED DURING CONSTRUCTION SHALL BE REPLACED BY CONTRACTOR AS DIRECTED BY ENGINEER AT NO ADDITIONAL COST TO OWNER.
- ALL UTILITY CONSTRUCTION IS SUBJECT TO INSPECTION PRIOR TO APPROVAL FOR BACKFILL, IN ACCORDANCE WITH THE APPROPRIATE UTILITY COMPANY AND/OR STATE OF CONNECTICUT REQUIREMENTS.
- VENTILATION AIR INTAKES ARE LOCATED ADJACENT TO THE WORK SITE. FUMES AND ODORS FROM HEAVY/LIGHT MACHINERY OPERATION HAS BEEN A CONCERN IN THE PAST. CONTRACTOR SHALL NOT LET HEAVY/LIGHT MACHINERY OR VEHICLES IDOL FOR MORE THAN 5 MINUTES.
- PART OF THE WORK INCLUDES WORK IN CONFINED SPACE. THE VAULT ROOM (AB405A) IS A CONFINED SPACE PER 29CFR1926. CONTRACTOR SHALL EVALUATE WEATHER THE CONFINED SPACE IS A PERMITTED CONFINED SPACE PER 29CFR1926.

XREFS: [CDMS_2234] Images: [JLL SSD 5-3-2019] Last saved by: ENGLLSB Time: 5/3/2019 12:56:39 PM pw:\pw.cdm-smith.com\FW_PL\20945\230357\04 Design Services NM_100% 01 General\10 CADD\0001STPL.dwg ©2019 CDM SMITH ALL RIGHTS RESERVED. REUSE OF DOCUMENTS: THESE DOCUMENTS AND DESIGNS PROVIDED BY PROFESSIONAL SERVICE, INCORPORATED HEREIN, ARE THE PROPERTY OF CDM SMITH AND ARE NOT TO BE USED, IN WHOLE OR PART, FOR ANY OTHER PROJECT WITHOUT THE WRITTEN AUTHORIZATION OF CDM SMITH.

REV. NO.	DATE	DRWN	CHKD	REMARKS

DESIGNED BY:	R. GRAHAM
DRAWN BY:	S. ENGEL
SHEET CHK'D BY:	T. BURKE
CROSS CHK'D BY:	N. JONES
APPROVED BY:	J. LALIBERTE
DATE:	MAY 2019

77 Hartland Street, Suite 201
East Hartford, CT 06108
Tel: (860) 523-7615

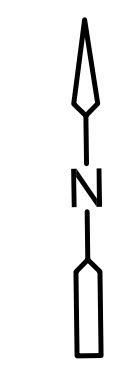
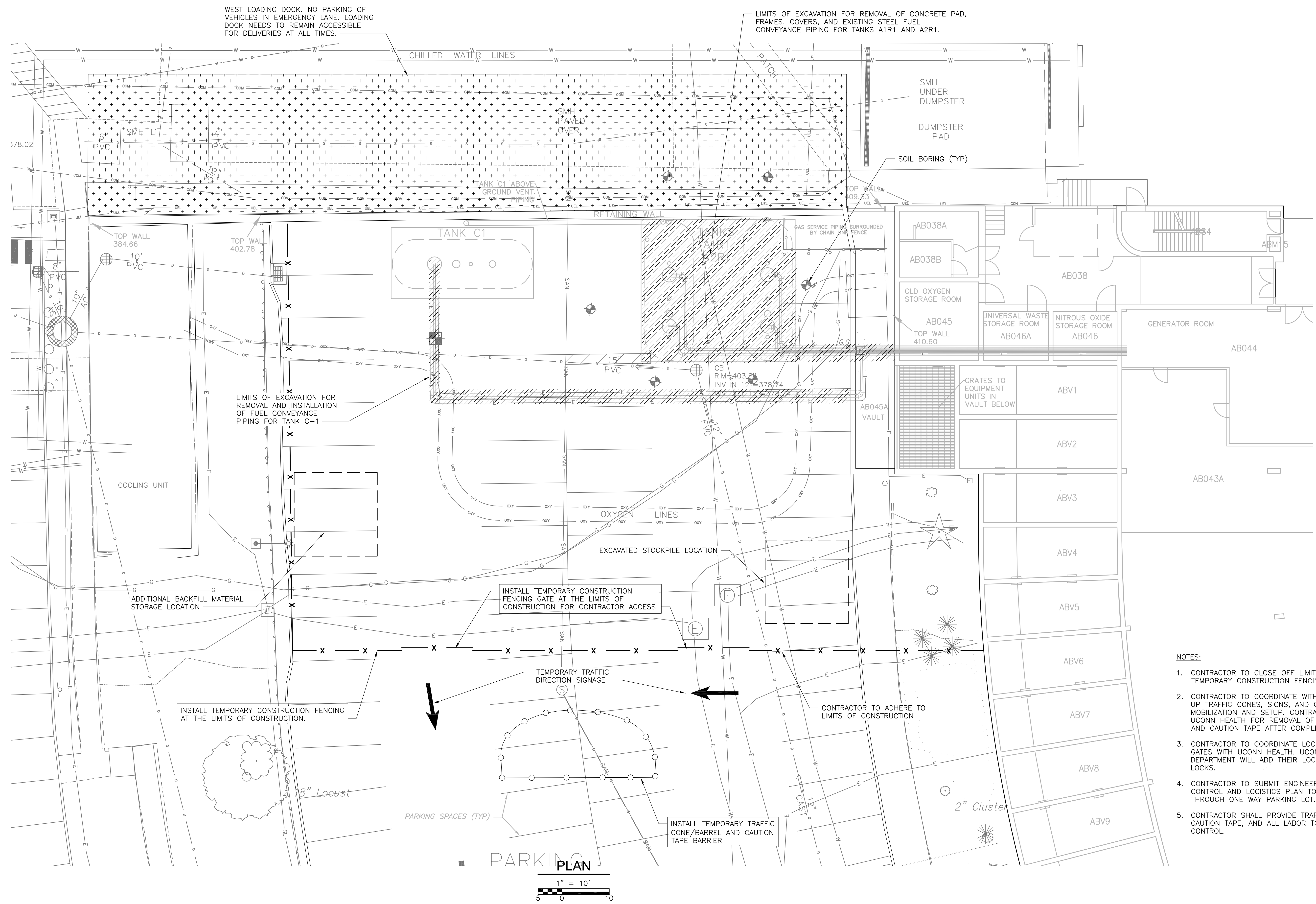
UCONN HEALTH
FUEL OIL TANK PERMANENT CLOSURE
AND PIPING REPLACEMENT
PARKING LOT A3

LEGEND, SYMBOLS, AND GENERAL NOTES

PROJECT NO.	20945-230357
FILE NAME:	G001STPL.DWG
SHEET NO.	G-1



XREFS: [CDMS_2234_X000STPL] Images: []
 Last saved by: ENGLLSB Time: 5/2/2019 10:09:06 AM
 pw:\p\cdmsmith.com\FW_PL\20945\230357\04 Design Services NM_100% 01 General\10 CADD\G002STPL.dwg
 © 2019 CDM SMITH ALL RIGHTS RESERVED.
 REUSE OF DOCUMENTS: THESE DOCUMENTS AND DESIGNS PROVIDED BY PROFESSIONAL SERVICE, INCORPORATED HEREIN, ARE THE PROPERTY OF CDM SMITH AND ARE NOT TO BE USED, IN WHOLE OR PART, FOR ANY OTHER PROJECT WITHOUT THE WRITTEN AUTHORIZATION OF CDM SMITH.



- NOTES:**
- CONTRACTOR TO CLOSE OFF LIMITS OF CONSTRUCTION VIA TEMPORARY CONSTRUCTION FENCING.
 - CONTRACTOR TO COORDINATE WITH UCONN HEALTH TO SET UP TRAFFIC CONES, SIGNS, AND CAUTION TAPE PRIOR TO MOBILIZATION AND SETUP. CONTRACTOR TO COORDINATE WITH UCONN HEALTH FOR REMOVAL OF TRAFFIC CONES, SIGNS, AND CAUTION TAPE AFTER COMPLETION OF WORK.
 - CONTRACTOR TO COORDINATE LOCKING CONSTRUCTION FENCE GATES WITH UCONN HEALTH. UCONN HEALTH FIRE DEPARTMENT WILL ADD THEIR LOCKS TO CONTRACTORS LOCKS.
 - CONTRACTOR TO SUBMIT ENGINEER APPROVED TRAFFIC CONTROL AND LOGISTICS PLAN TO ALLOW FLOW OF TRAFFIC THROUGH ONE WAY PARKING LOT.
 - CONTRACTOR SHALL PROVIDE TRAFFIC CONES, SIGNAGE, CAUTION TAPE, AND ALL LABOR TO PROVIDE FOR TRAFFIC CONTROL.



REV. NO.	DATE	DRWN	CHKD	REMARKS

DESIGNED BY: R. GRAHAM
 DRAWN BY: S. ENGEL
 SHEET CHK'D BY: T. BURKE
 CROSS CHK'D BY: N. JONES
 APPROVED BY: J. LALIBERTE
 DATE: MAY 2019

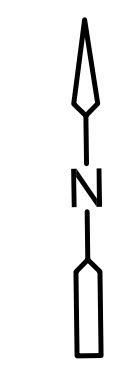
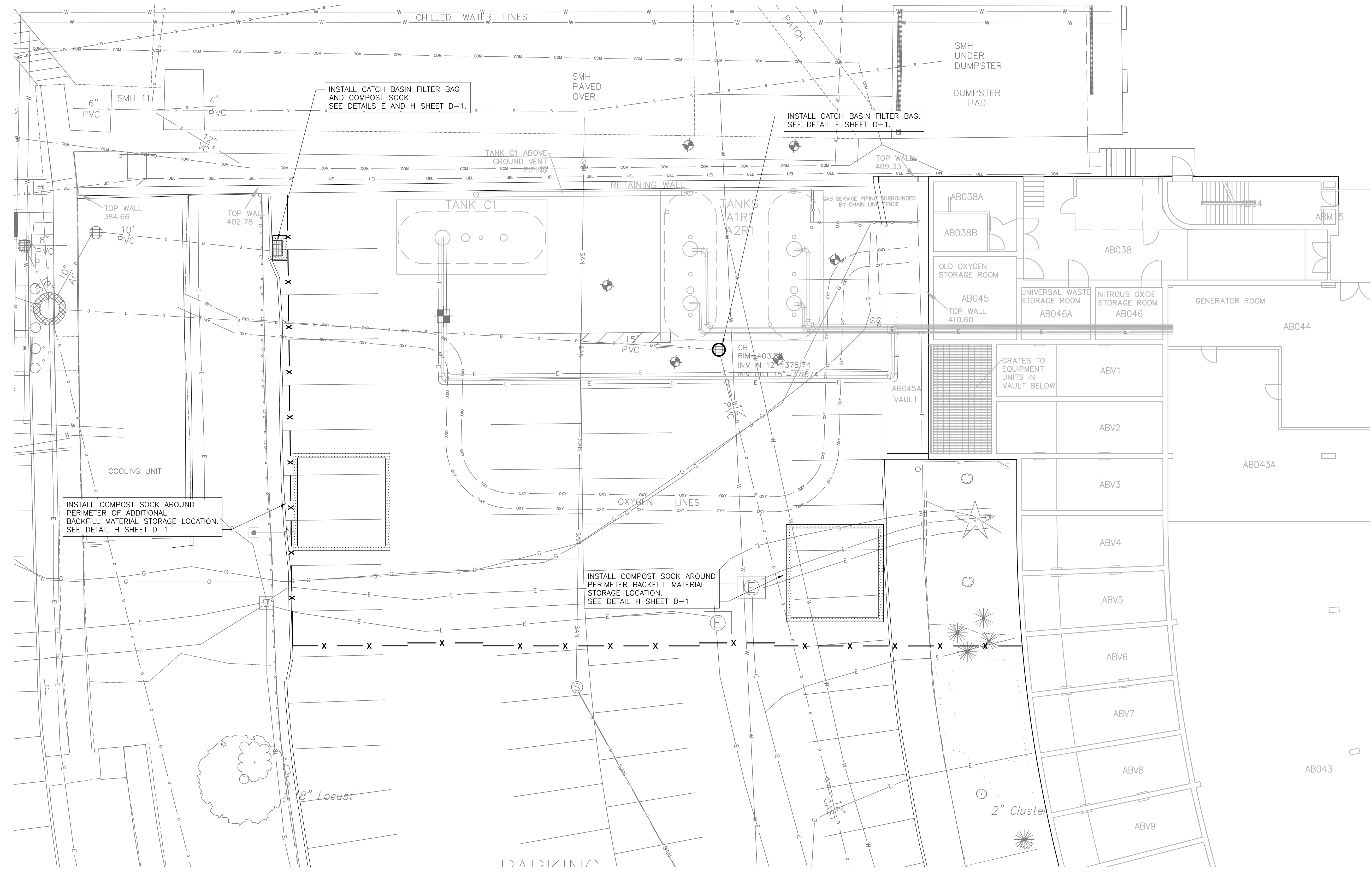
CDM Smith
 77 Hartland Street, Suite 201
 East Hartford, CT 06108
 Tel: (860) 523-7615

UCONN HEALTH
**FUEL OIL TANK PERMANENT CLOSURE
 AND PIPING REPLACEMENT
 PARKING LOT A3**

**CONTRACTOR STAGING PLAN
 AND
 LIMITS OF CONSTRUCTION**

PROJECT NO. 20945-230357
 FILE NAME: G002STPL.DWG
 SHEET NO. G-2

XREFS: [CDMS_2234; X000STPL] Images: []
 Last saved by: ENGLSB Time: 5/2/2019 10:08:56 AM
 pw:\pw.cdm-smith.com\FW_PL\20945\230357\04 Design Services NM_100% 01 General\10 CADD\G003STPL.dwg
 © 2019 CDM SMITH ALL RIGHTS RESERVED.
 REUSE OF DOCUMENTS: THESE DOCUMENTS AND DESIGNS PROVIDED BY PROFESSIONAL SERVICE, INCORPORATED HEREIN, ARE THE PROPERTY OF CDM SMITH AND ARE NOT TO BE USED, IN WHOLE OR PART, FOR ANY OTHER PROJECT WITHOUT THE WRITTEN AUTHORIZATION OF CDM SMITH.



PLAN
 1" = 10'
 5 0 10



REV. NO.	DATE	DRWN	CHKD	REMARKS

DESIGNED BY: R. GRAHAM
 DRAWN BY: S. ENGEL
 SHEET CHK'D BY: T. BURKE
 CROSS CHK'D BY: N. JONES
 APPROVED BY: J. LALIBERTE
 DATE: MAY 2019

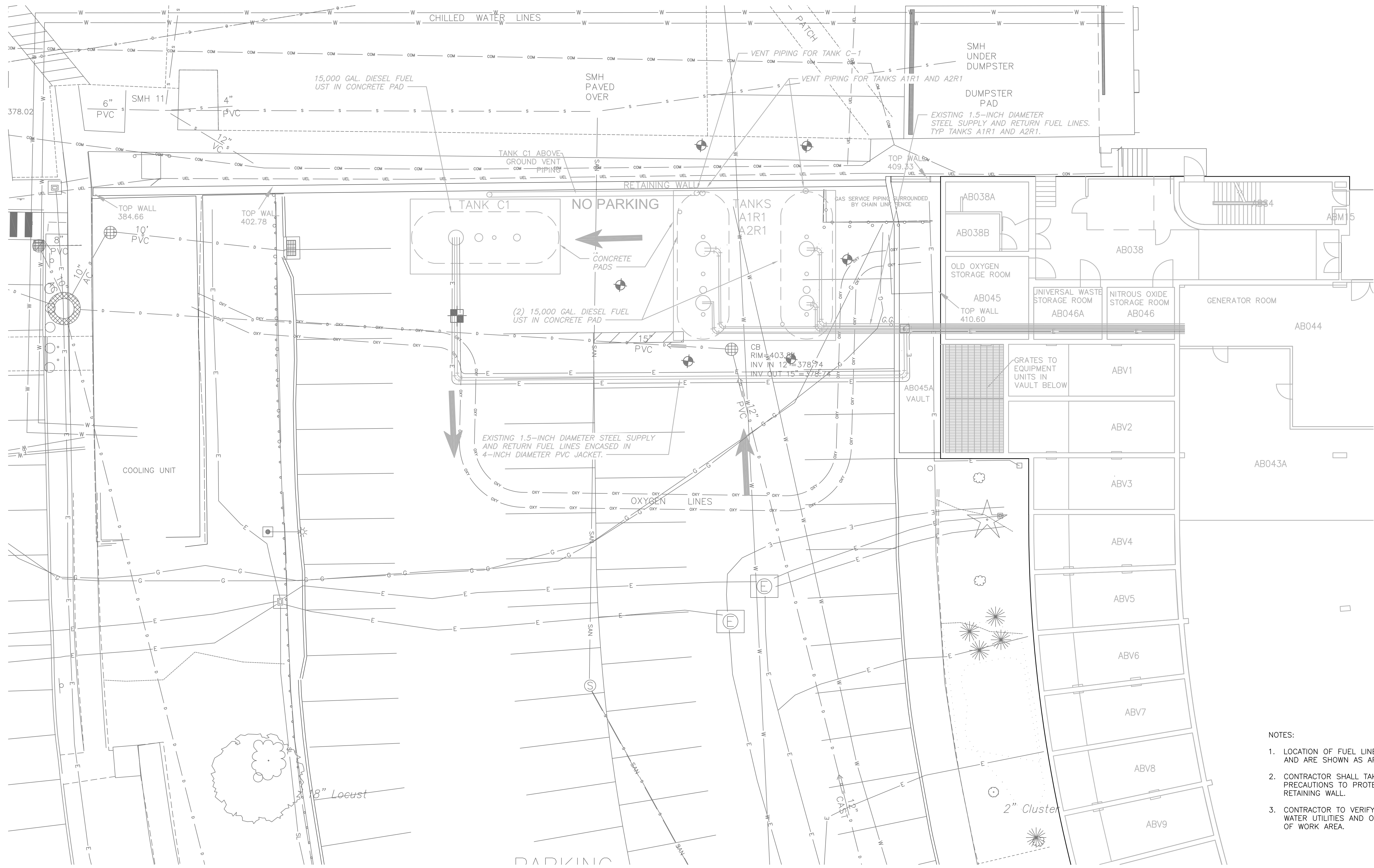


UCONN HEALTH
**FUEL OIL TANK PERMANENT CLOSURE
 AND PIPING REPLACEMENT
 PARKING LOT A3**

EROSION CONTROL PLAN
 SHEET NO.
G-3

PROJECT NO. 20945-230357
 FILE NAME: G003STPL.DWG
 SHEET NO.
G-3

XREFS: [CDMS_2234_X000STPL] Images: []
 Last saved by: ENGLLSB Time: 5/22/2019 10:08:46 AM
 pw:\\pw.cdm-smith.com\FW_PL\20945\230357\04 Design Services NM_100% 02 Civil\10 CADD\C001STPL.dwg
 © 2019 CDM SMITH ALL RIGHTS RESERVED.
 REUSE OF DOCUMENTS: THESE DOCUMENTS AND DESIGNS PROVIDED BY PROFESSIONAL SERVICE, INCORPORATED HEREIN, ARE THE PROPERTY OF CDM SMITH AND ARE NOT TO BE USED, IN WHOLE OR PART, FOR ANY OTHER PROJECT WITHOUT THE WRITTEN AUTHORIZATION OF CDM SMITH.



PLAN
 1" = 10'
 5 0 10

- NOTES:
1. LOCATION OF FUEL LINES ARE BASED ON GPR AND ARE SHOWN AS APPROXIMATE.
 2. CONTRACTOR SHALL TAKE ALL NECESSARY PRECAUTIONS TO PROTECT THE EXISTING RETAINING WALL.
 3. CONTRACTOR TO VERIFY LOCATIONS OF GAS AND WATER UTILITIES AND OXYGEN LINES IN VICINITY OF WORK AREA.



REV. NO.	DATE	DRWN	CHKD	REMARKS

DESIGNED BY: R. GRAHAM
 DRAWN BY: S. ENGEL
 SHEET CHK'D BY: T. BURKE
 CROSS CHK'D BY: N. JONES
 APPROVED BY: J. LALIBERTE
 DATE: MAY 2019

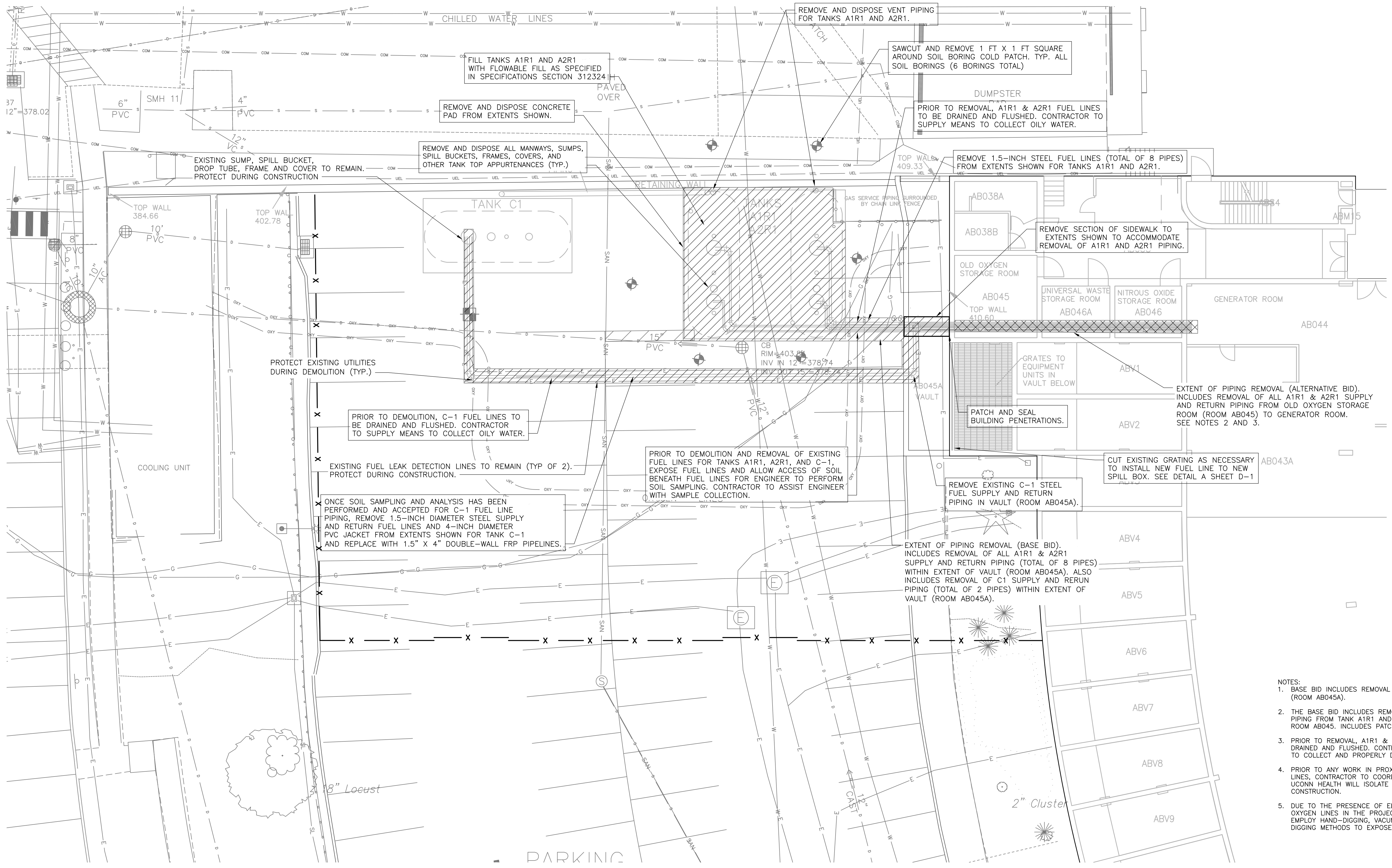
CDM Smith
 77 Hartland Street, Suite 201
 East Hartford, CT 06108
 Tel: (860) 523-7615

UCONN HEALTH
**FUEL OIL TANK PERMANENT CLOSURE
 AND PIPING REPLACEMENT
 PARKING LOT A3**

EXISTING CONDITIONS PLAN
 SHEET NO. C-1

PROJECT NO. 20945-230357
 FILE NAME: C001STPL.DWG
 SHEET NO. C-1

XREFS: [CDMS_2234_X000STPL] Images: [JUL SSD 5-3-2019]
 Last saved by: ENGLSB Time: 5/3/2019 1:14:54 PM
 pw:\p\cdmsmith.com\FW_PL\20945\230357\04 Design Services NM_100% 02 Civil\10 CADD\C002STPL.dwg
 ©2019 CDM SMITH ALL RIGHTS RESERVED.
 REUSE OF DOCUMENTS: THESE DOCUMENTS AND DESIGNS PROVIDED BY PROFESSIONAL SERVICE, INCORPORATED HEREIN, ARE THE PROPERTY OF CDM SMITH AND ARE NOT TO BE USED, IN WHOLE OR PART, FOR ANY OTHER PROJECT WITHOUT THE WRITTEN AUTHORIZATION OF CDM SMITH.



PLAN
 1" = 10'
 5 0 10

- NOTES:
1. BASE BID INCLUDES REMOVAL OF C-1 PIPING IN VAULT (ROOM AB045A).
 2. THE BASE BID INCLUDES REMOVAL OF A1R1 AND A2R1 PIPING FROM TANK A1R1 AND A2R1 TO THE INSIDE OF ROOM AB045. INCLUDES PATCHING OF CONCRETE WALL.
 3. PRIOR TO REMOVAL, A1R1 & A2R1 FUEL LINES TO BE DRAINED AND FLUSHED. CONTRACTOR TO COLLECT AND PROPERLY DISPOSE OF OILY WATER.
 4. PRIOR TO ANY WORK IN PROXIMITY TO THE OXYGEN LINES, CONTRACTOR TO COORDINATE WITH UCONN HEALTH. UCONN HEALTH WILL ISOLATE THESE LINES DURING CONSTRUCTION.
 5. DUE TO THE PRESENCE OF ELECTRIC, GAS, FUEL AND OXYGEN LINES IN THE PROJECT AREA, CONTRACTOR TO EMPLOY HAND-DIGGING, VACUUM-DIGGING OR OTHER SOFT DIGGING METHODS TO EXPOSE FUEL LINES.

REV. NO.	DATE	DRWN	CHKD	REMARKS

DESIGNED BY: R. GRAHAM
 DRAWN BY: S. ENGEL
 SHEET CHK'D BY: T. BURKE
 CROSS CHK'D BY: N. JONES
 APPROVED BY: J. LALIBERTE
 DATE: MAY 2019



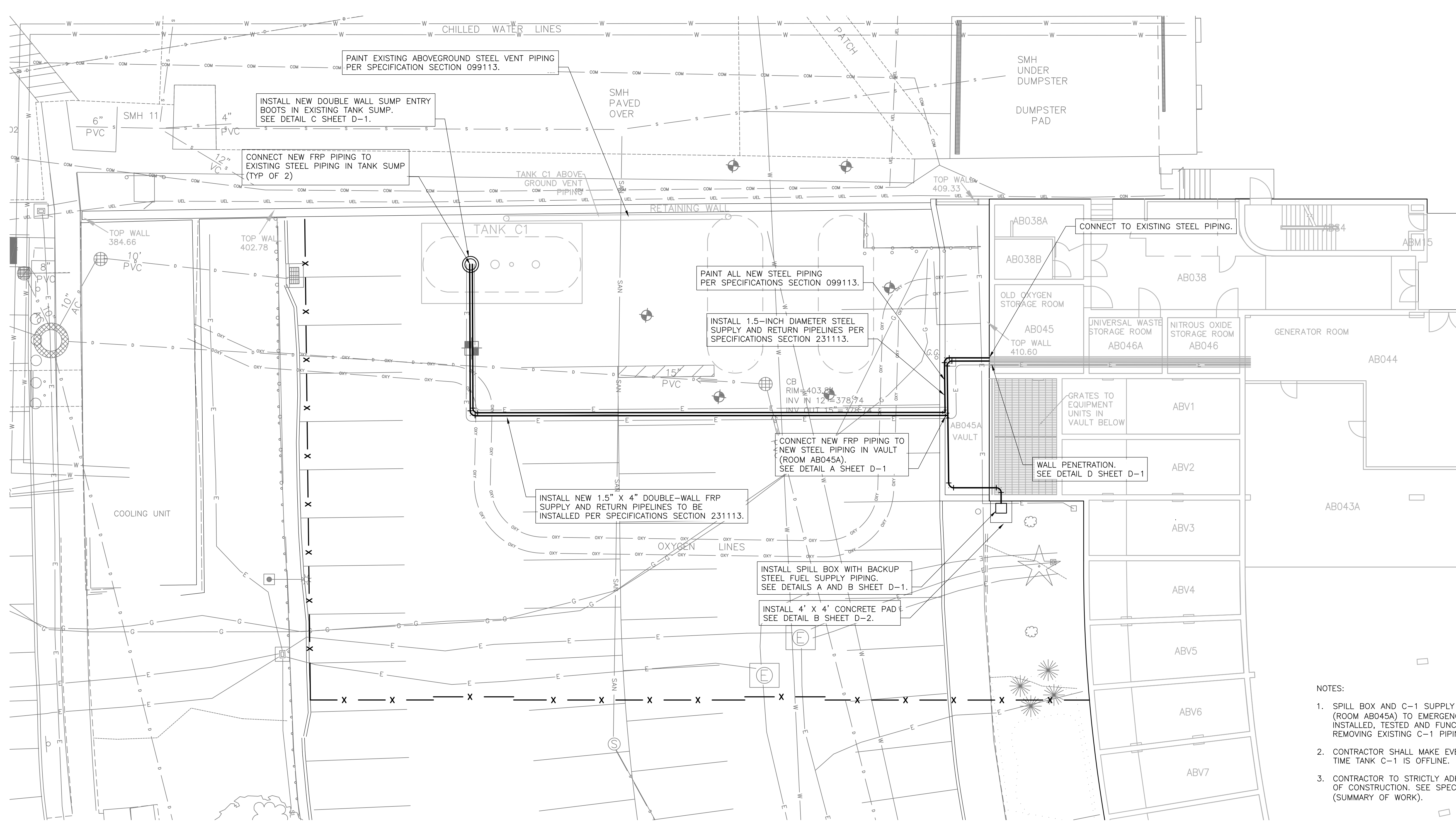
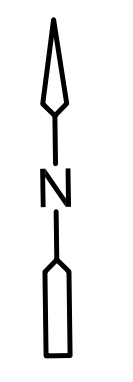
UCONN HEALTH
**FUEL OIL TANK PERMANENT CLOSURE
 AND PIPING REPLACEMENT
 PARKING LOT A3**

DEMOLITION PLAN

PROJECT NO. 20945-230357
 FILE NAME: C002STPL.DWG
 SHEET NO.
C-2



XREFS: [CDMS_2234_X0003TPL] Images: []
 Last saved by: ENGLLSB Time: 5/2/2019 10:08:25 AM
 pw:\pw.cdm-smith.com\FW_PL\20945\230357\04 Design Services NM_100% 02 Civil\10 CADD\C003STPL.dwg
 © 2019 CDM SMITH ALL RIGHTS RESERVED.
 REUSE OF DOCUMENTS: THESE DOCUMENTS AND DESIGNS PROVIDED BY PROFESSIONAL SERVICE, INCORPORATED HEREIN, ARE THE PROPERTY OF CDM SMITH AND ARE NOT TO BE USED, IN WHOLE OR PART, FOR ANY OTHER PROJECT WITHOUT THE WRITTEN AUTHORIZATION OF CDM SMITH.



PLAN
 1" = 10'
 5 0 10

- NOTES:
1. SPILL BOX AND C-1 SUPPLY PIPING IN THE VAULT (ROOM AB045A) TO EMERGENCY GENERATORS TO BE INSTALLED, TESTED AND FUNCTIONING PRIOR TO REMOVING EXISTING C-1 PIPING TO C-1 TANK.
 2. CONTRACTOR SHALL MAKE EVERY EFFORT TO LIMIT THE TIME TANK C-1 IS OFFLINE.
 3. CONTRACTOR TO STRICTLY ADHERE TO THE SEQUENCE OF CONSTRUCTION. SEE SPECIFICATIONS SECTION 011000 (SUMMARY OF WORK).

REV. NO.	DATE	DRWN	CHKD	REMARKS

DESIGNED BY: R. GRAHAM
 DRAWN BY: S. ENGEL
 SHEET CHK'D BY: T. BURKE
 CROSS CHK'D BY: N. JONES
 APPROVED BY: J. LALIBERTE
 DATE: MAY 2019



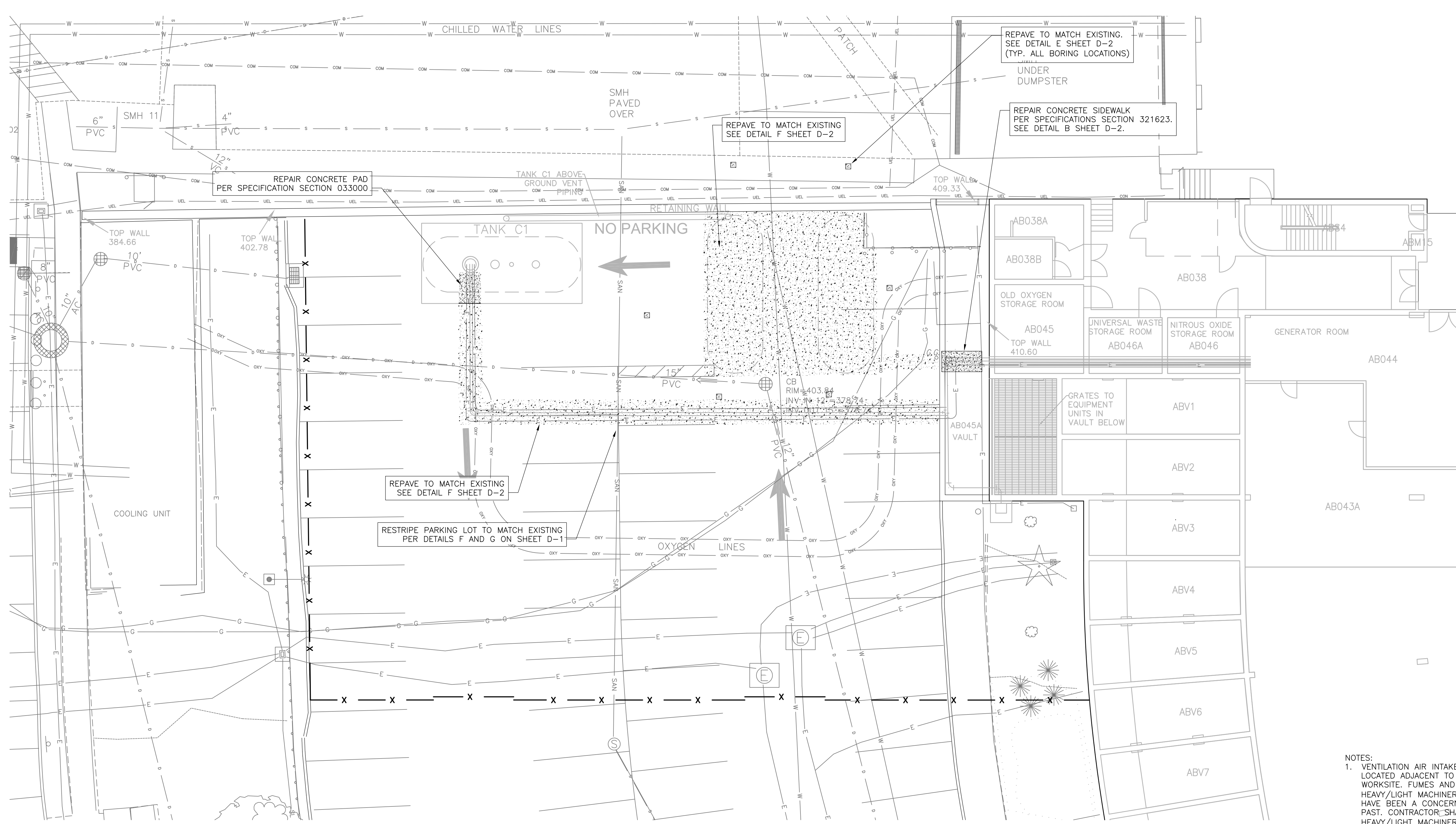
UCONN HEALTH
**FUEL OIL TANK PERMANENT CLOSURE
 AND PIPING REPLACEMENT
 PARKING LOT A3**

PIPING LAYOUT PLAN
 SHEET NO.
C-3

PROJECT NO. 20945-230357
 FILE NAME: C003STPL.DWG
 SHEET NO.
C-3



XREFS: [CDMS_2234_X000STPL] Images: []
 Last saved by: ENGLSB Time: 5/2/2019 10:08:11 AM
 pw:\pw.cdm-smith.com\FW_PL\20945\230357\04 Design Services NM_100% 02 Civil\10 CADD\C004STPL.dwg
 © 2019 CDM SMITH ALL RIGHTS RESERVED.
 REUSE OF DOCUMENTS: THESE DOCUMENTS AND DESIGNS PROVIDED BY PROFESSIONAL SERVICE, INCORPORATED HEREIN, ARE THE PROPERTY OF CDM SMITH AND ARE NOT TO BE USED, IN WHOLE OR PART, FOR ANY OTHER PROJECT WITHOUT THE WRITTEN AUTHORIZATION OF CDM SMITH.



NOTES:
 1. VENTILATION AIR INTAKES ARE LOCATED ADJACENT TO THE WORKSITE. FUMES AND ODORS FROM HEAVY/LIGHT MACHINERY OPERATION HAVE BEEN A CONCERN IN THE PAST. CONTRACTOR SHALL NOT LET HEAVY/LIGHT MACHINERY OR VEHICLES IDLE FOR MORE THAN 5 MINUTES.

REV. NO.	DATE	DRWN	CHKD	REMARKS

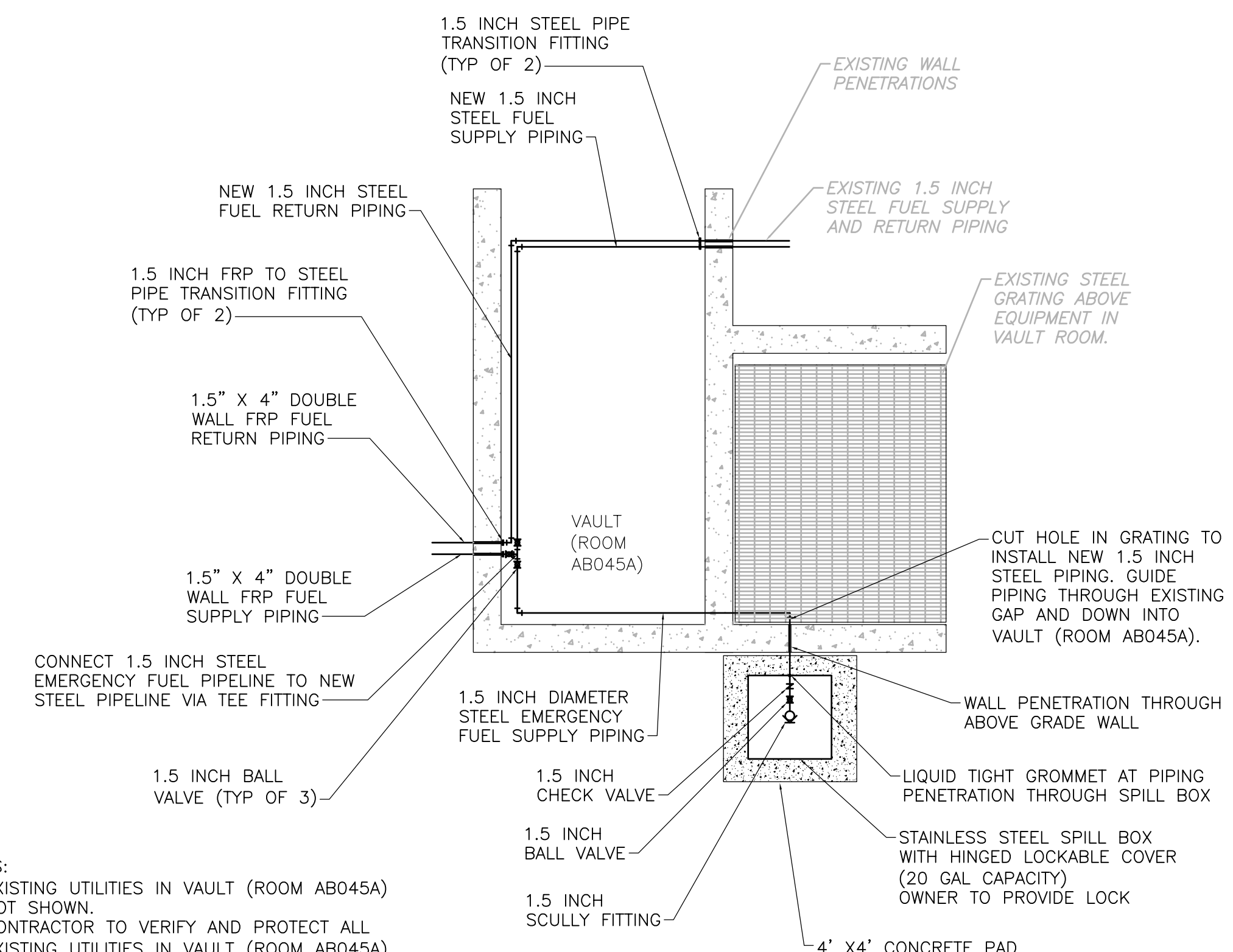
DESIGNED BY: R. GRAHAM
 DRAWN BY: S. ENGEL
 SHEET CHK'D BY: T. BURKE
 CROSS CHK'D BY: N. JONES
 APPROVED BY: J. LALIBERTE
 DATE: MAY 2019



UCONN HEALTH
 FUEL OIL TANK PERMANENT CLOSURE
 AND PIPING REPLACEMENT
 PARKING LOT A3

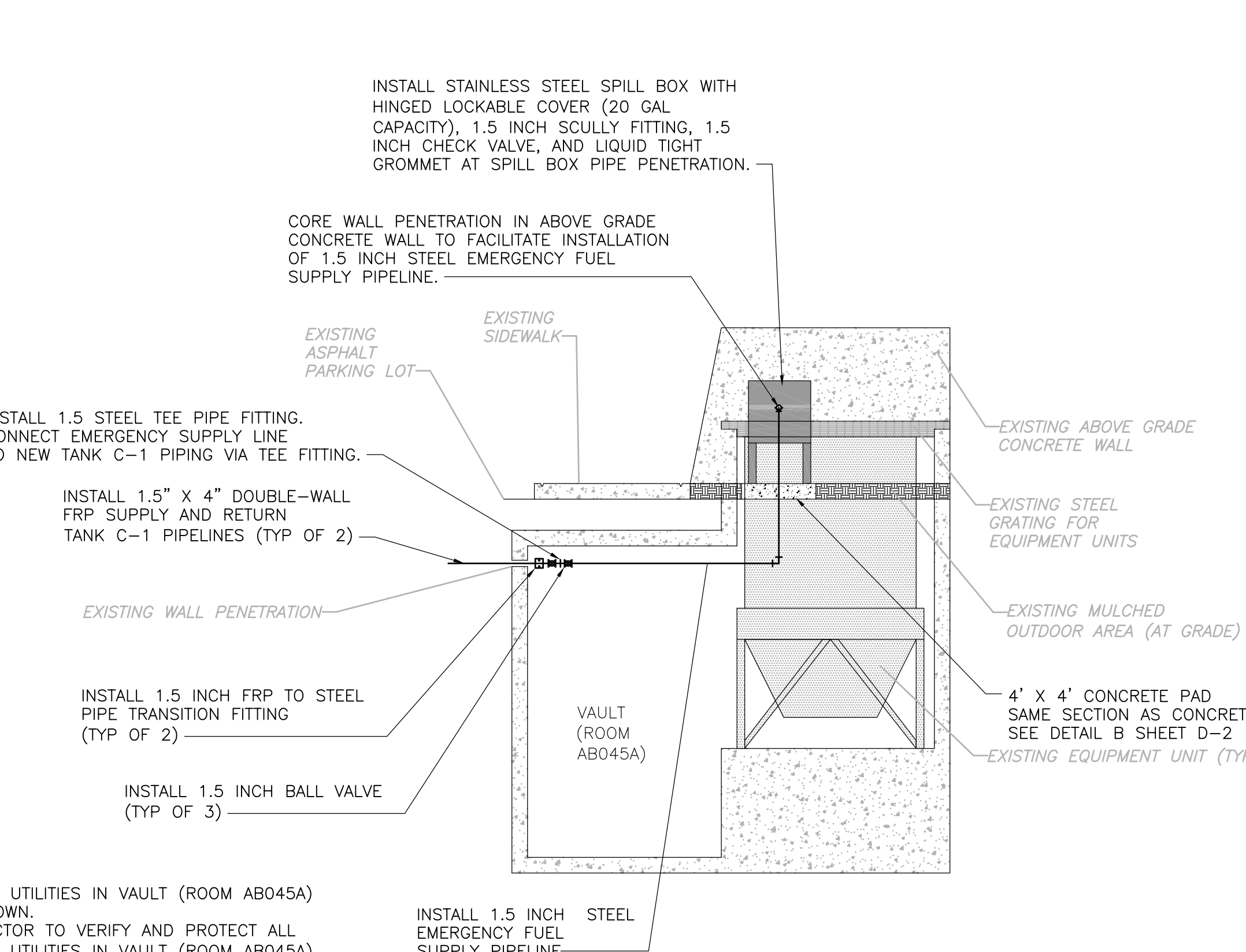
SURFACE RESTORATION PLAN
 PROJECT NO. 20945-230357
 FILE NAME: C004STPL.DWG
 SHEET NO.
 C-4

XREFS: [CDMS_2234] Images: [JUL SSD 5-3-2019] Time: 5/3/2019 12:28:06 PM
 Last saved by: ENGLSBB pw:\pw.cdm-smith.com\FW_PL\20945\230357\04 Design Services NM_100% 02 Civil\10 CAD\1001STPL.dwg
 © 2019 CDM SMITH ALL RIGHTS RESERVED. REUSE OF DOCUMENTS: THESE DOCUMENTS AND DESIGNS PROVIDED BY PROFESSIONAL SERVICE, INCORPORATED HEREIN, ARE THE PROPERTY OF CDM SMITH AND ARE NOT TO BE USED, IN WHOLE OR PART, FOR ANY OTHER PROJECT WITHOUT THE WRITTEN AUTHORIZATION OF CDM SMITH.



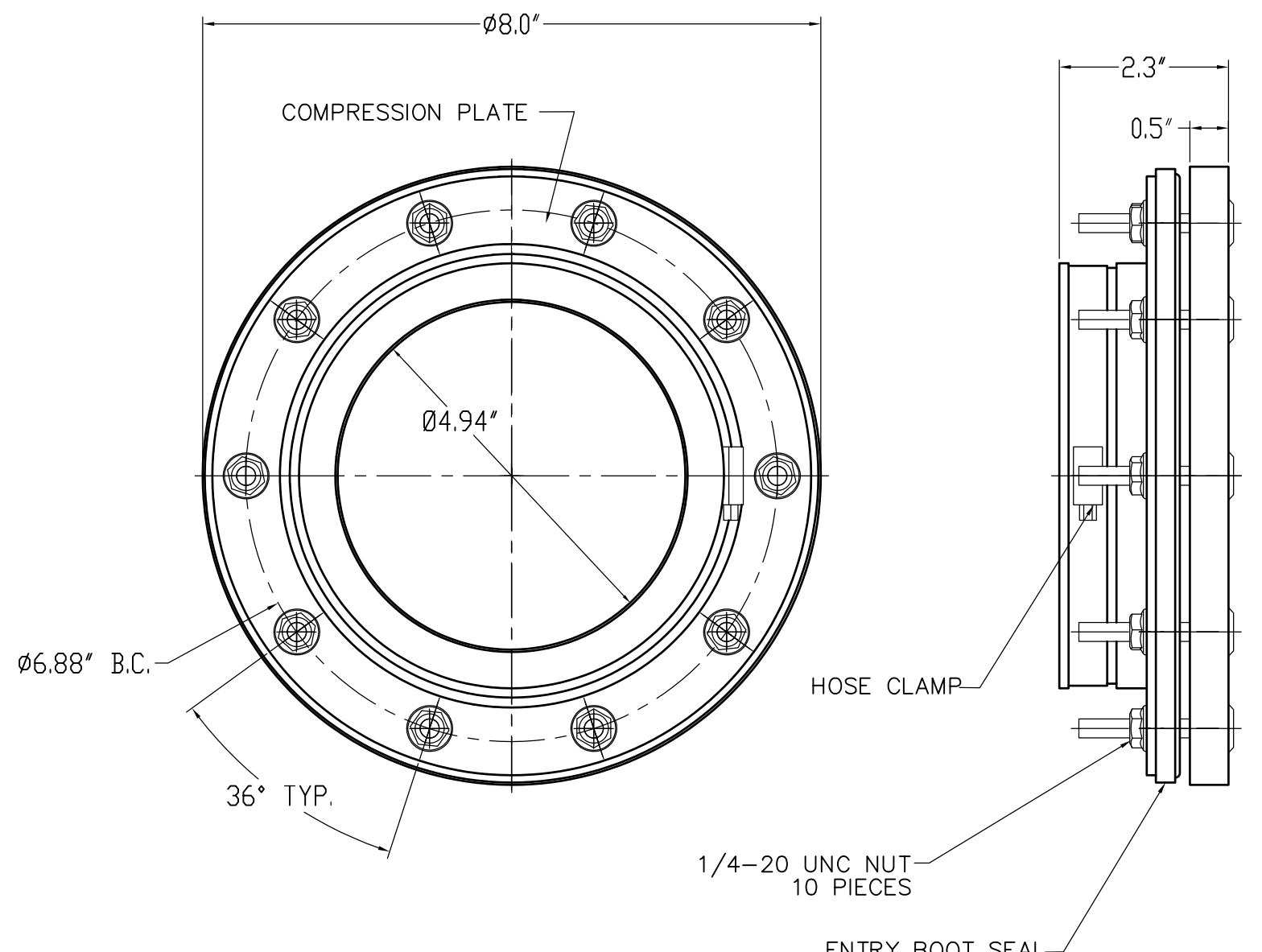
EMERGENCY FUEL SUPPLY/RETURN CONNECTIONS PLAN

DETAIL A
NTS



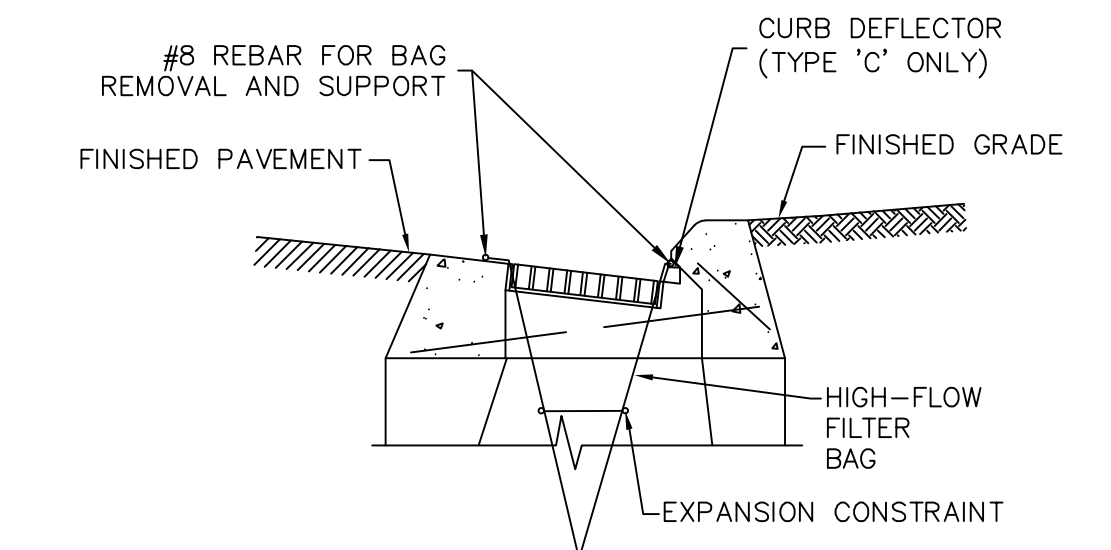
EMERGENCY FUEL SUPPLY/RETURN CONNECTIONS PROFILE

DETAIL B
NTS



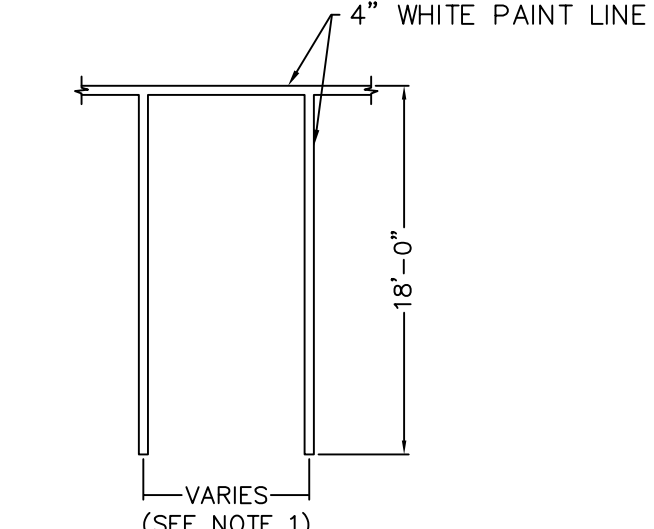
4-IN DIA. DOUBLE WALL SUMP ENTRY

DETAIL C
NTS



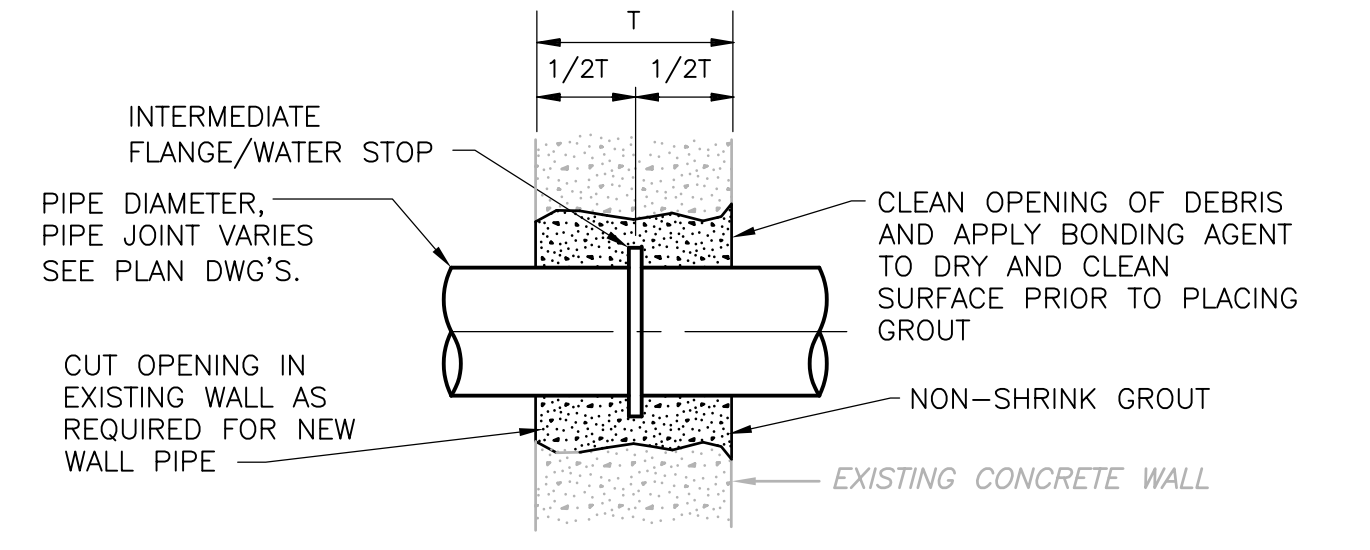
SEDIMENT CONTROL AT CATCH BASIN

DETAIL E
NTS



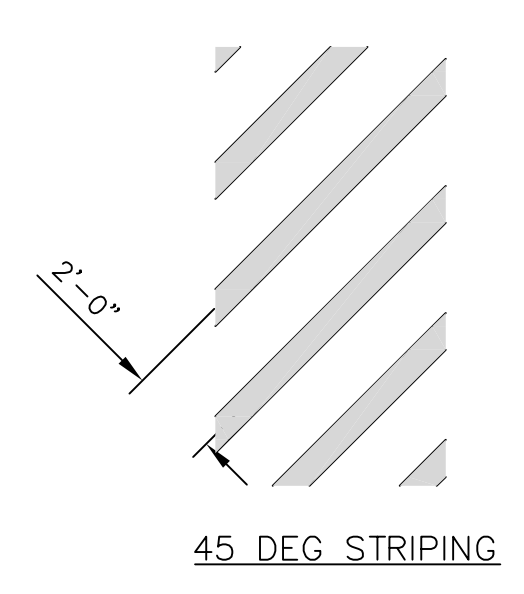
TYPICAL PARKING SPACE

DETAIL G
NTS

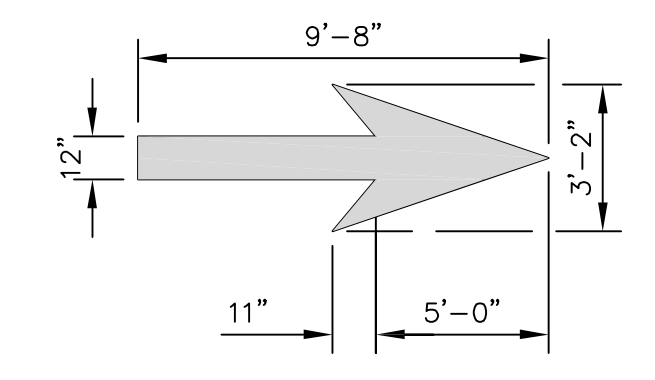


WALL PENETRATION

DETAIL D
NTS



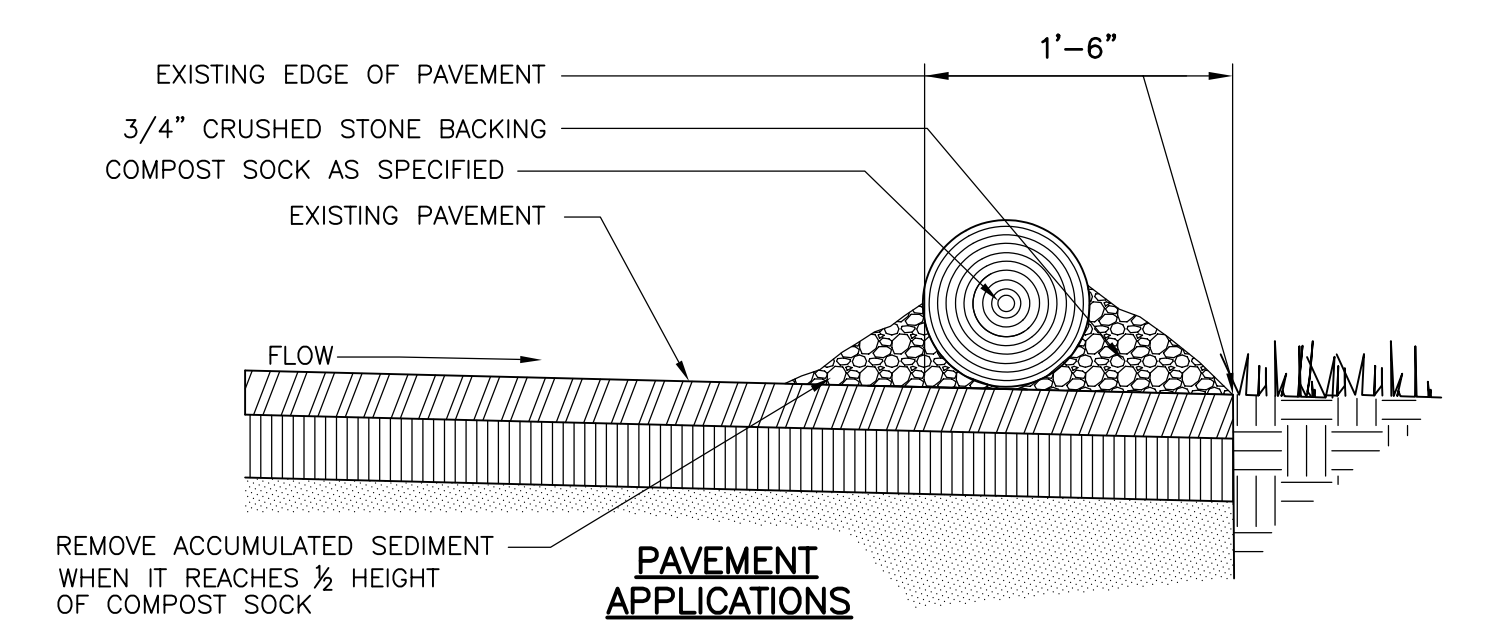
45 DEG STRIPING



DIRECTIONAL ARROW

TYPICAL PAVEMENT MARKINGS

DETAIL F
NTS



COMPOST SOCK

DETAIL H
NTS



REV. NO.	DATE	DRWN	CHKD	REMARKS

DESIGNED BY: R. GRAHAM	<p>77 Hartland Street, Suite 201 East Hartford, CT 06108 Tel: (860) 523-7615</p>
DRAWN BY: S. ENGEL	
SHEET CHK'D BY: T. BURKE	
CROSS CHK'D BY: N. JONES	
APPROVED BY: J. LALIBERTE	
DATE: MAY 2019	

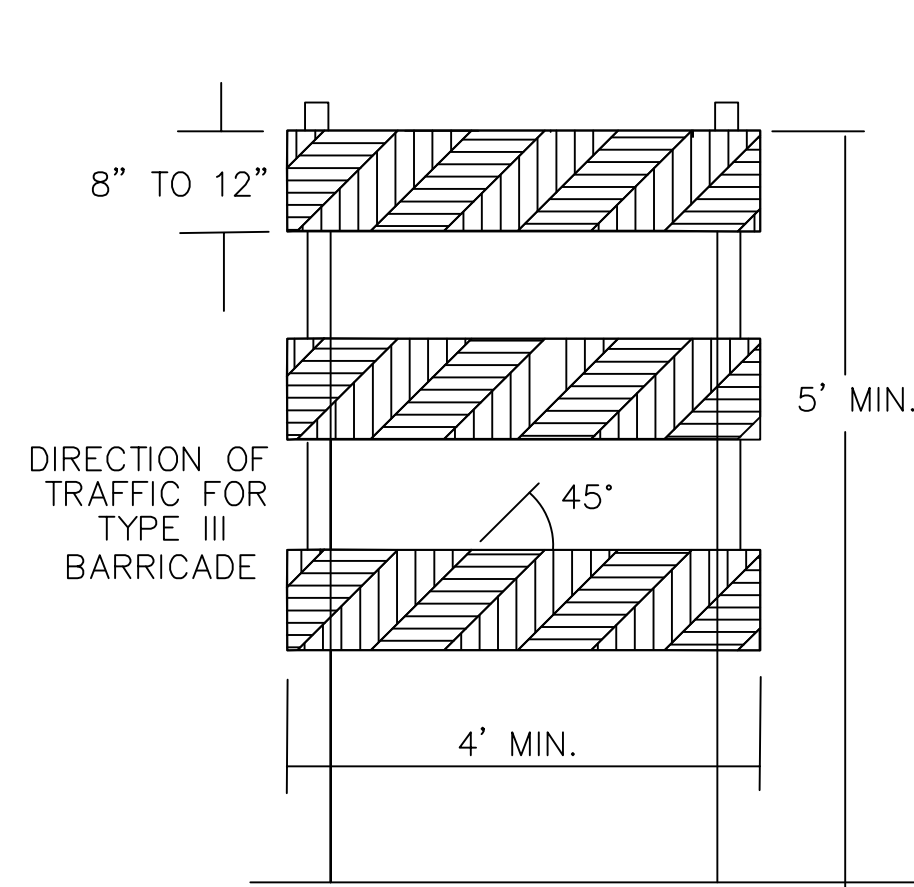
UCONN HEALTH
**FUEL OIL TANK PERMANENT CLOSURE
 AND PIPING REPLACEMENT
 PARKING LOT A3**

DETAILS I
 PROJECT NO. 20945-230357
 FILE NAME: D001STPL.DWG
 SHEET NO. **D-1**

CONSTRUCTION BARRICADE

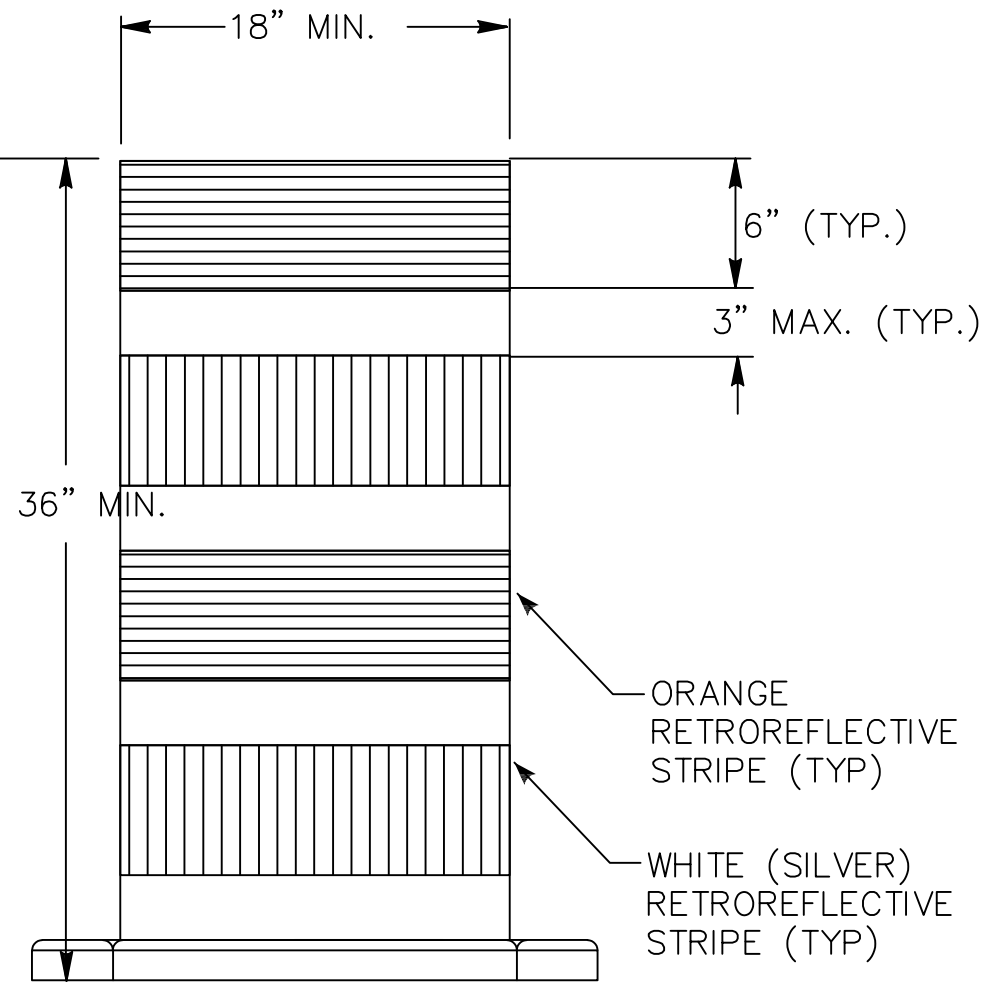
NOTES:

1. CONSTRUCTION BARRICADES SHALL CONFORM TO THE REQUIREMENTS OF NCHRP REPORT 350 (TL-3) AND THE LATEST EDITION OF THE MUTCD.
2. MARKINGS FOR BARRICADE RAILS SHALL BE ALTERNATE ORANGE AND WHITE STRIPES SLOPING DOWNWARD IN THE DIRECTION TRAFFIC IS TO PASS. 6" WIDE STRIPES SHALL BE USED.
3. CORNERS OF BARRICADE RAILS SHALL BE ROUNDED.
4. THE ENTIRE AREA OF ORANGE AND WHITE STRIPES SHALL BE RETROREFLECTIVE SHEETING AS REQUIRED IN THE SPECIFICATIONS.



TYPE III BARRICADE (TYP.)

TRAFFIC DRUM

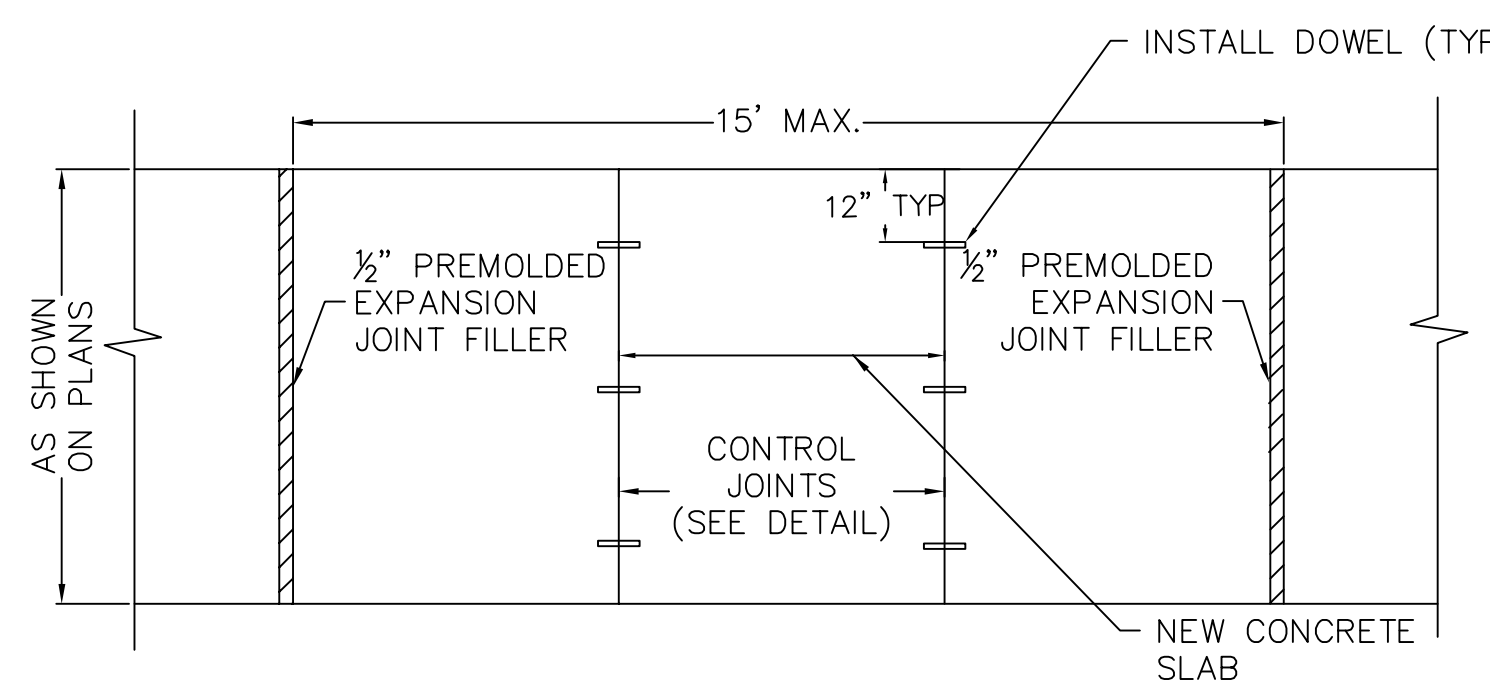


NOTES:

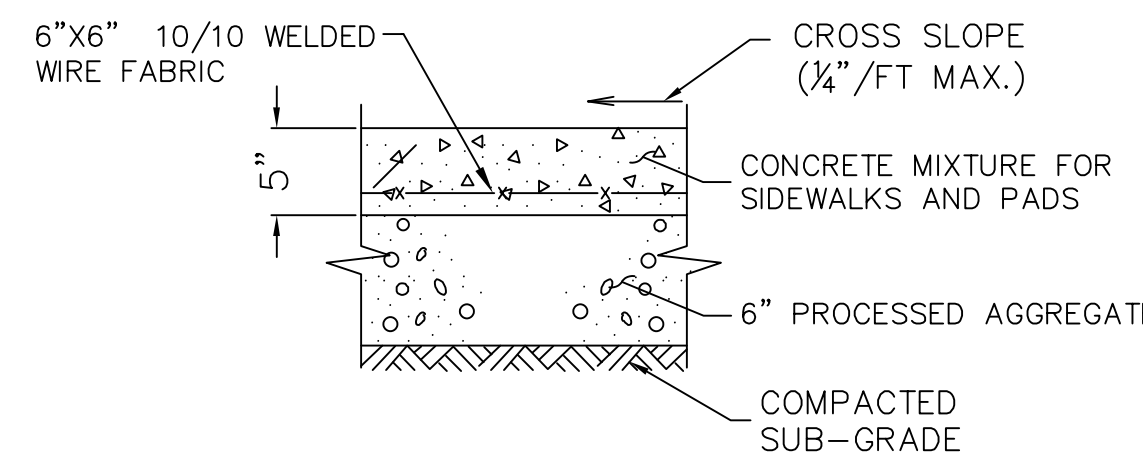
1. TRAFFIC DRUMS SHALL CONFORM TO THE REQUIREMENTS OF NCHRP REPORT 350 (TL-3) AND THE LATEST EDITION OF THE MUTCD.
2. THE ENTIRE AREA OF ORANGE AND WHITE STRIPES SHALL BE RETROREFLECTIVE SHEETING AS REQUIRED IN THE SPECIFICATIONS.
3. THE SECTIONS OF DRUMS NOT COVERED WITH RETROREFLECTIVE STRIPES SHALL BE ORANGE.

CONSTRUCTION TRAFFIC BARRICADE AND DRUM

DETAIL A
NTS



PLAN



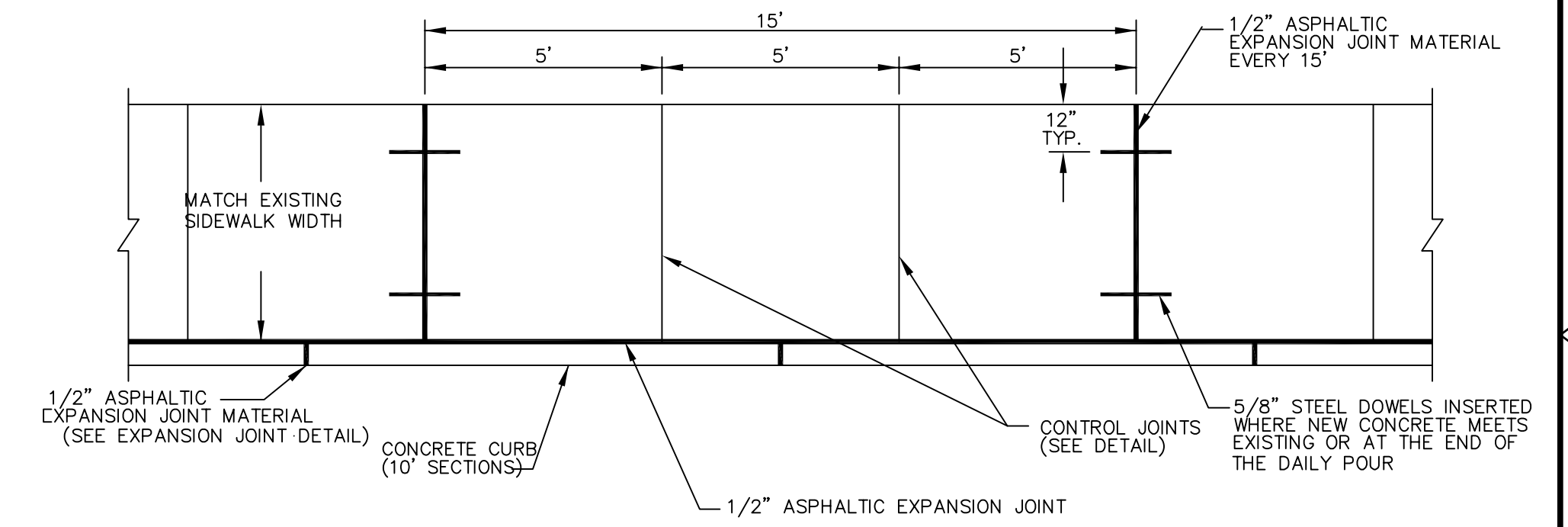
SECTION

NOTES:

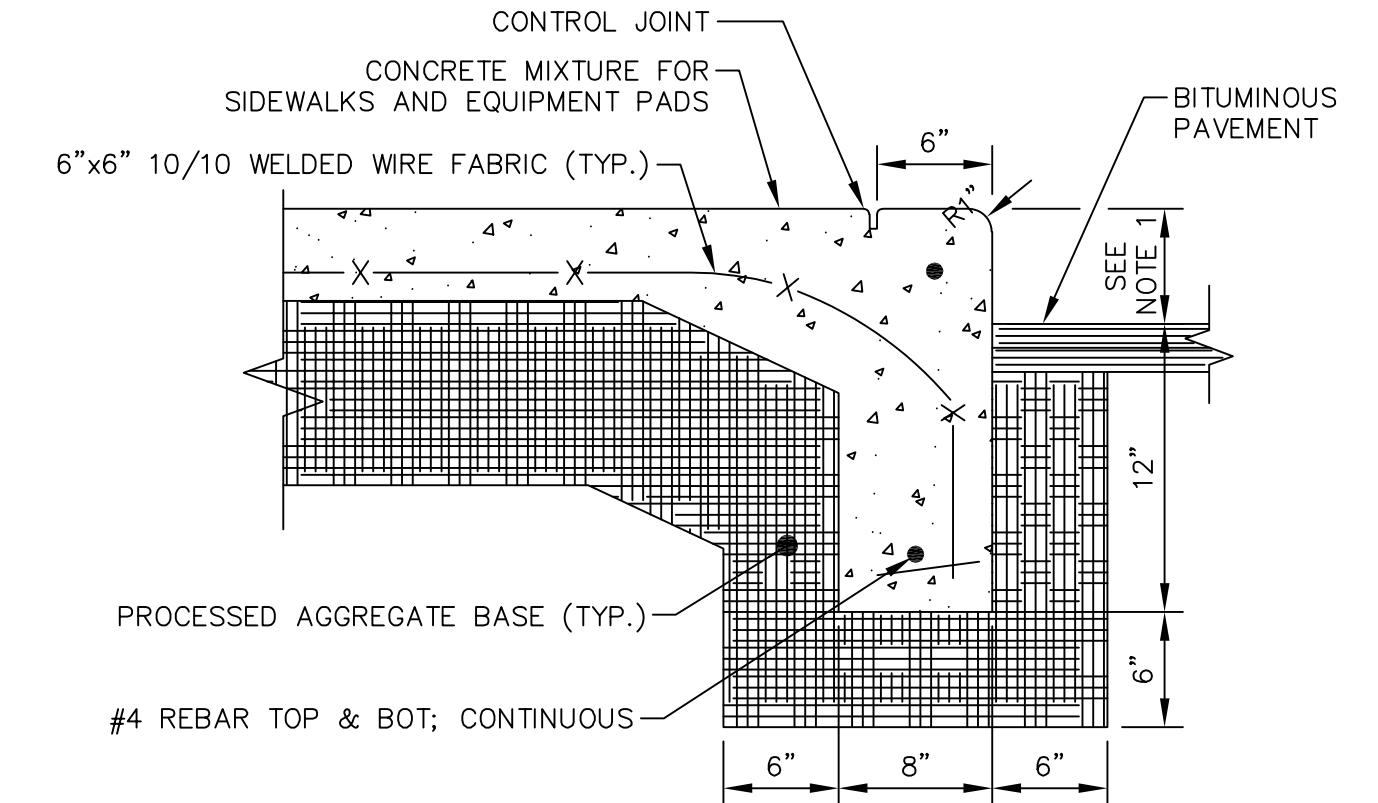
1. INCREASE SLAB THICKNESS TO 8" FOR SIDEWALKS CROSSING DRIVEWAYS AND OTHER VEHICULAR TRAFFIC LOADED AREAS.
2. REMOVE CONCRETE WALKS TO THE NEAREST EXPANSION JOINT AT THE LOCATIONS NOTED ON THE PLANS.
3. MATCH WIDTH AND PROVIDE FLUSH TRANSITION BETWEEN NEW AND EXISTING CONCRETE SIDEWALK.
4. INSTALL DOWELS (3 MIN.) WHERE NEW CONCRETE MATCHES TO EXIST. CONCRETE.

CONCRETE SIDEWALK

DETAIL B
NTS



SIDEWALK PLAN VIEW

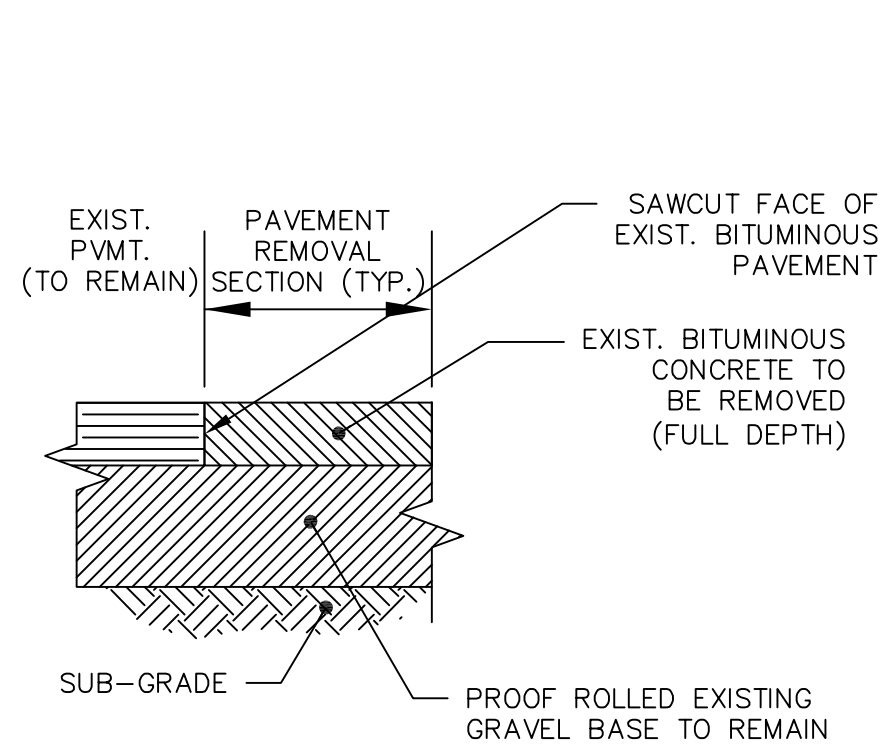


NOTES:

1. HEIGHT OF CURB SHALL BE 6" UNLESS OTHERWISE NOTED. REFER TO SITE LAYOUT PLAN FOR MORE INFORMATION.
2. REFER TO CONCRETE SIDEWALK DETAIL FOR ADDITIONAL INFORMATION.

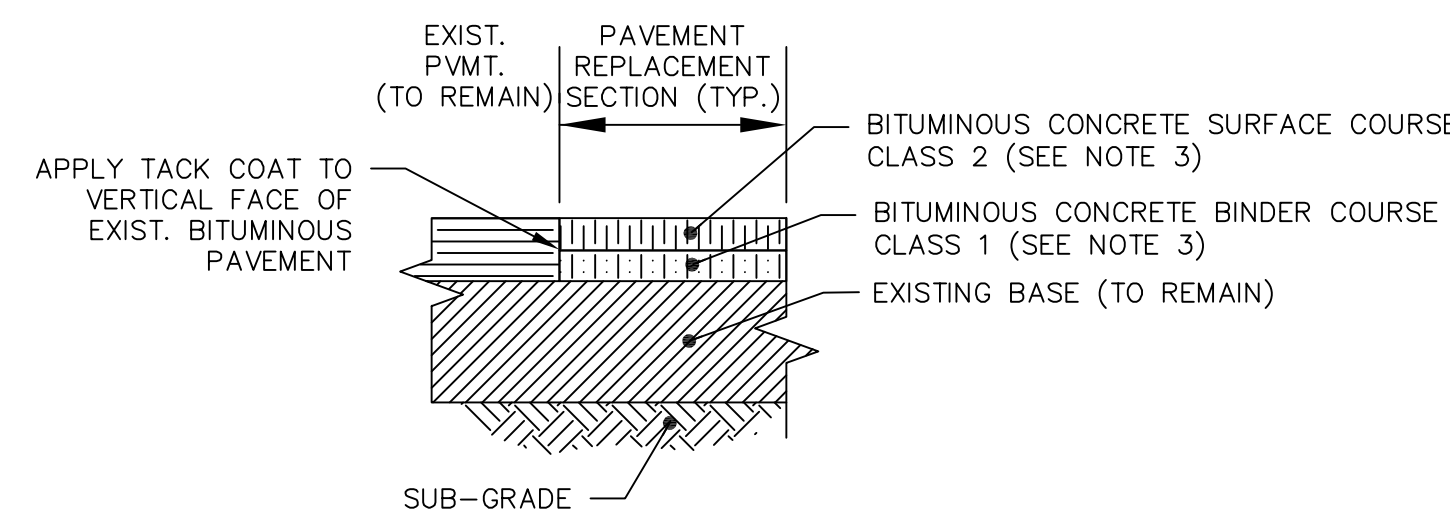
TYPICAL INTEGRAL CONCRETE CURB AND SIDEWALK

DETAIL C
NTS



BITUMINOUS CONCRETE PAVEMENT - REMOVAL

DETAIL D
NTS

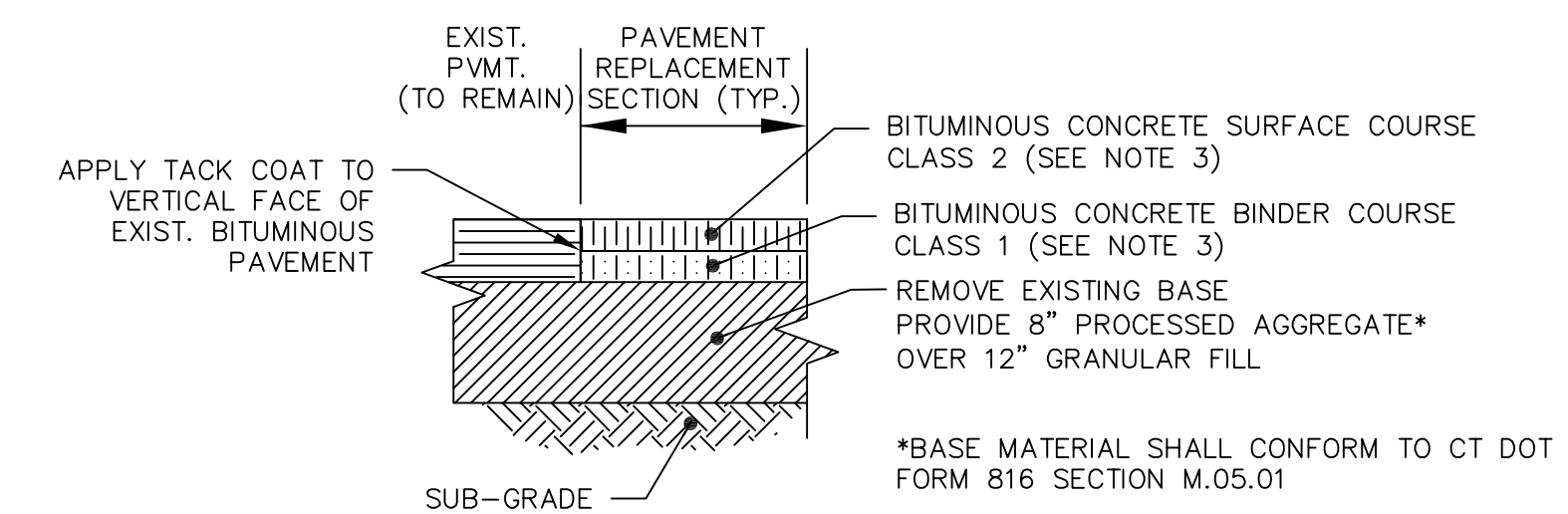


BITUMINOUS CONCRETE PAVEMENT - REPLACEMENT

DETAIL E
NTS

NOTES:

1. CLASS 1 AND CLASS 2 BITUMINOUS CONCRETE MIXTURES SHALL COMPLY WITH CT DOT FORM 816 SECTION M.04.
2. THE FINAL FINISHED GRADE OF THE PAVEMENT SHALL PROVIDE A UNIFORM SURFACE.
3. INSTALL 2" BITUMINOUS CONCRETE SURFACE COURSE AND 2" BITUMINOUS CONCRETE BINDER COURSE.



NOTES:

1. CLASS 1 AND CLASS 2 BITUMINOUS CONCRETE MIXTURES SHALL COMPLY WITH CT DOT FORM 816 SECTION M.04.
2. THE FINAL FINISHED GRADE OF THE PAVEMENT SHALL PROVIDE A UNIFORM SURFACE.
3. INSTALL 2" BITUMINOUS CONCRETE SURFACE COURSE AND 2" BITUMINOUS CONCRETE BINDER COURSE.

BITUMINOUS CONCRETE PAVEMENT - FULL DEPTH RECONSTRUCTION

DETAIL F
NTS

XREFS: [CDMS_2234] Images: [JUL SSD 5-3-2019] Last saved by: ENGLSB Time: 5/3/2019 12:28:00 PM pw:\pw.cdm-smith.com\FW_PL\20945\230357\04 Design Services NM_100% 02 Civil\10 CAD\DD002STPL.dwg ©2019 CDM SMITH ALL RIGHTS RESERVED. REUSE OF DOCUMENTS: THESE DOCUMENTS AND DESIGNS PROVIDED BY PROFESSIONAL SERVICE, INCORPORATED HEREIN, ARE THE PROPERTY OF CDM SMITH AND ARE NOT TO BE USED, IN WHOLE OR PART, FOR ANY OTHER PROJECT WITHOUT THE WRITTEN AUTHORIZATION OF CDM SMITH.

DESIGNED BY:	R. GRAHAM
DRAWN BY:	S. ENGEL
SHEET CHK'D BY:	T. BURKE
CROSS CHK'D BY:	N. JONES
APPROVED BY:	J. LALIBERTE
DATE:	MAY 2019



UCONN HEALTH
 FUEL OIL TANK PERMANENT CLOSURE
 AND PIPING REPLACEMENT
 PARKING LOT A3

DETAILS II

PROJECT NO.	20945-230357
FILE NAME:	D002STPL.DWG
SHEET NO.	D-2

