



**ADA Upgrades at McKenna Ct
Wallingford Housing Authority
Addendum #1
4/26/19**

General/Clarifications

Apartment Bathroom Doors

Revise door tagged as "7" on sheets A2.1 and A2.2 with "5" (per sheet A2.0). See revised door schedule on A1.3r

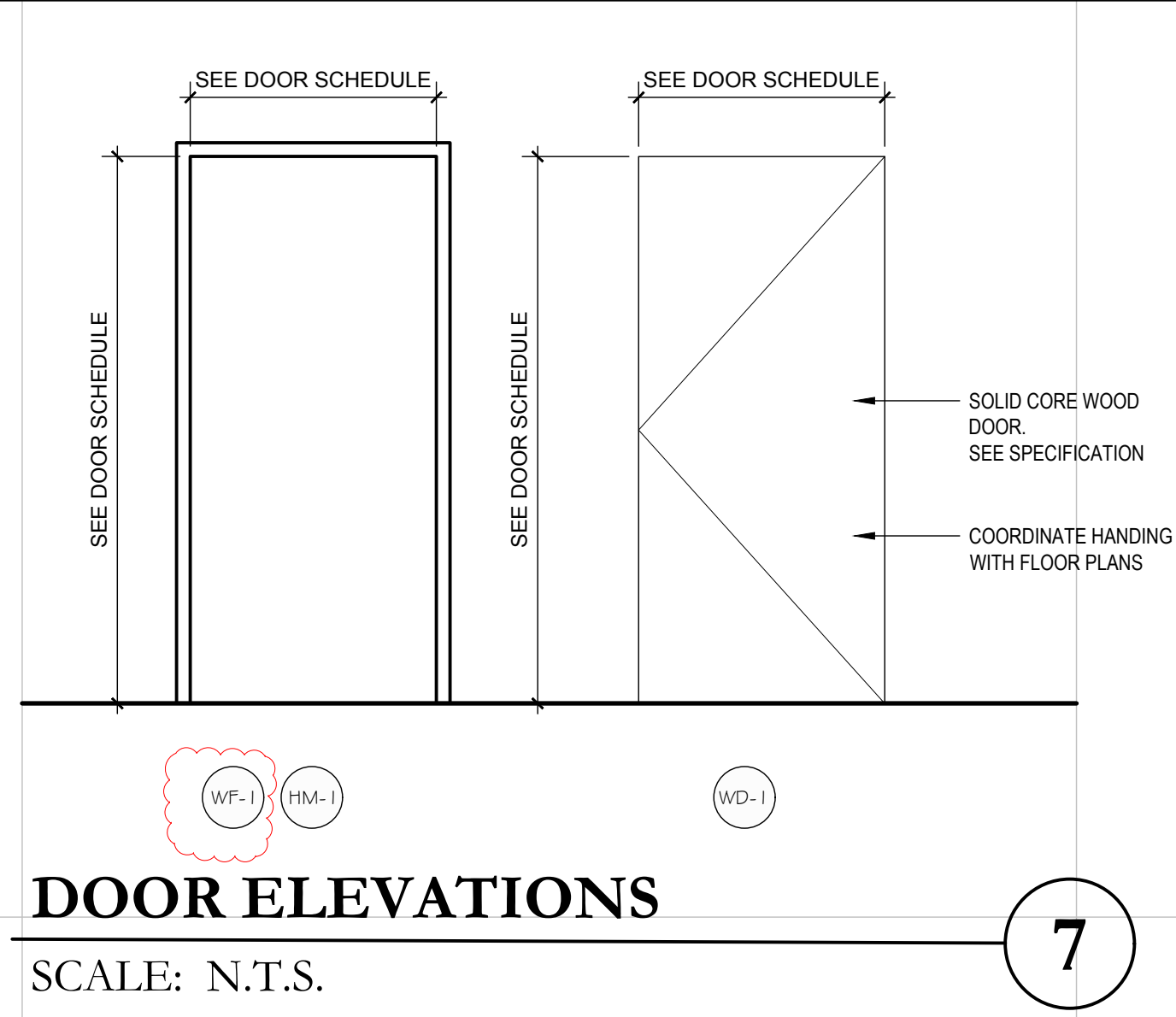
Interior Elevations

See revised interior elevation tags on A2.0r

Changes to the Drawings

REPLACE sheet A1.3 with A1.3r (attached)
REPLACE sheet A2.0 with A2.0r (attached)

End of Addendum #1



DOOR ID	LOCATION	DOOR SIZE (WxH)	DOOR MATERIAL- TYPE (SEE DOOR ELEVATIONS)	FRAME MATERIAL- TYPE (SEE FRAME ELEVATION)	HARDWARE-SEE SPECIFICATIONS														REMARKS		
					FIRECODE																
					PANIC BAR	AUTOMATIC CLOSER	SELF-CLOSING HINGES	DELAYED ACTION CLOSER	180° SWING	LEVER HANDLES (ADA-COMPLIANT)	ACCESSIBLE THRESHOLD	KICK PLATES	PRIVACY LOCKSET	STOREROOM LOCKSET	CLASSROOM LOCKSET	DEADBOLTS	DUAL POINT LOCKING SYSTEM (NO KEY)	FULL PERIMETER WEATHERSTRIPPING		ELECTRIC STRIKE	BUTTS HINGES
1	ENTRY	3'-0" x 6'-8" V.I.F.	EX	EX																	NEW PUSH BUTTON OPENER ON EXISTING DOOR
2	LAUNDRY	3'-0" x 6'-8" V.I.F.	WD-1	HM-1																	LOCKSET TO BE ON TIMER TO RESTRICT ACCESS TO COMMUNITY ROOM AFTER HOURS
3	BATHROOM	3'-0" x 6'-8" V.I.F.	WD-1	HM-1																	PREP ADJACENT SURFACES FOR NEW DOORS. PROVIDE MARBLE THRESHOLD
4	COMMUNSTORAGE/OFFICE	3'-0" x 6'-8" V.I.F.	HM-2	HM-1																	PREP ADJACENT SURFACES FOR NEW DOORS
5	APARTMENT BATHROOM	3'-0" x 6'-8" V.I.F.	WD-1	WF-1																	PREP ADJACENT SURFACES FOR NEW DOORS. PROVIDE MARBLE THRESHOLD. CASING TO MATCH APARTMENT STANDARD

GENERAL NOTES:

DOOR SIZES ARE APPOINTED FOR PURPOSES OF BIDDING AND ARE FOR REFERENCE ONLY. GENERAL CONTRACTOR AND DOOR SUPPLIER TO FIELD VERIFY ALL OPENINGS PRIOR TO ORDERING AND INSTALLING NEW DOORS AND FRAMES. DOOR MUST BE SIZED TO ACCOMMODATE CHANGE IN FLOOR THICKNESS.

GENERAL CONTRACTOR AND DOOR SUPPLIER TO VERIFY ALL FINAL SIZES AND QUANTITIES OF DOORS PRIOR TO ORDERING AND INSTALLATION.

GENERAL CONTRACTOR AND DOOR MANUFACTURER TO FIELD VERIFY AND DETERMINE WHICH DOOR UNITS WILL REQUIRE TEMPERED GLAZING AND PROVIDE TEMPERED GLAZING WHERE REQUIRED BY THE BUILDING CODE.

REMOVE EXISTING DOORS AS REQUIRED. PREPARE OPENING TO RECEIVE NEW DOOR UNIT.

ENTRY DOORS SHALL BE PREHUNG ON ROT RESISTANT FRAMES WITH HINGES, MILL COMPOSITE ADJUSTABLE SILL, SWEEPS & FULL WEATHER STRIPPING

ALL EXTERIOR DOOR GLAZING SHALL 1" TEMPERED INSULATED GLAZING WITH LOW-E, TYP.

PROVIDE ADA COMPLIANT THRESHOLDS AT ALL APARTMENT UNITS

PROVIDE (8) KEYS PER APARTMENT UNIT, (DIFFERENT KEYING PER APARTMENT UNIT) KEYED TO MASTER

ALL ENTRY LOCKSETS & DEADBOLTS SHALL BE KEYED TO THE HOUSING AUTHORITY MASTER SYSTEM, PROVIDE (10) MASTER KEYS TO HOUSING AUTHORITY. CONTRACTOR SHALL BE RESPONSIBLE FOR ALL ASSOCIATED COST.

ATTIC STOCK PROVIDE (6) CORES WITH (8) KEYS PER CORE.

APARTMENT DOORS TO HAVE PVC TRIM WITH RABBETED SIDE TO RECEIVE SIDING

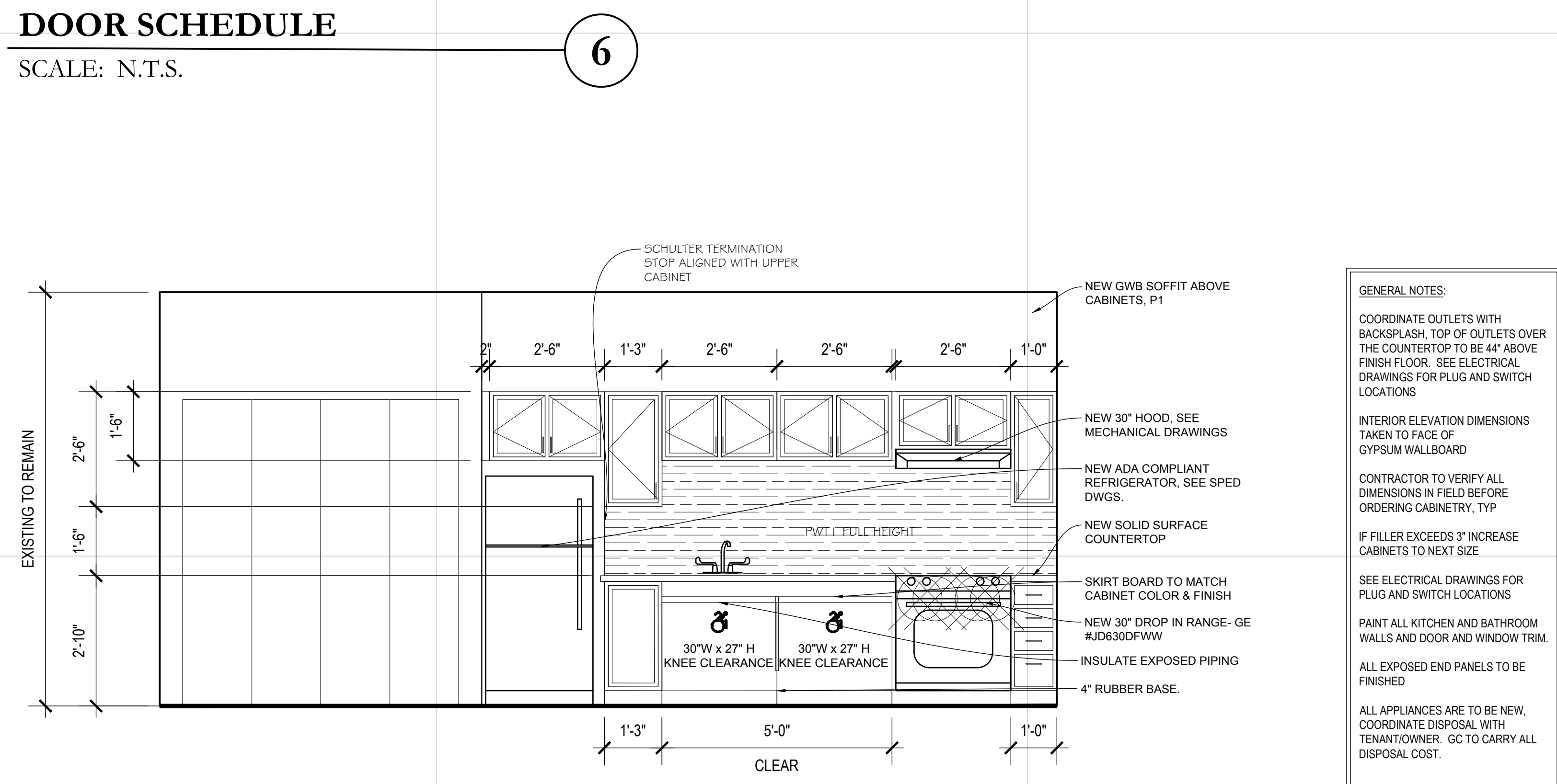
GENERAL CONTRACTOR TO PATCH, REPAIR & REPAINT ADJACENT FINISHES DISTURBED BY DOOR INSTALLATION AS REQUIRED

INTERIOR TRIM FOR APARTMENT DOORS IS TO BE PRE-PRIMED & PAINTED, MATCH WHA STANDARD COLOR. GENERAL CONTRACTOR TO FIELD VERIFY ALL CONDITIONS.

SWINGS TO MATCH EXISTING, FIELD VERIFY.

REFER TO SPECIFICATIONS AND FINISH DRAWINGS FOR ALL FINISH INFORMATION

PROVIDE AND INSTALL PAN FLASHING OVER ROUGH SILL FRAMING, INCLUSIVE OF THE CORNERS OF THE SILL FRAMING; SIDE FLASHING THAT EXTENDS OVER THE PAN FLASHING, AND TOP FLASHING THAT EXTENDS OVER THE SIDE FLASHING OR EQUIVALENT DETAILS FOR STRUCTURAL MASONRY WALLS.



GENERAL NOTES:

COORDINATE OUTLETS WITH BACKSPASH, TOP OF OUTLETS OVER THE COUNTERTOP TO BE 4" ABOVE FINISH FLOOR. SEE ELECTRICAL DRAWINGS FOR PLUG AND SWITCH LOCATIONS

INTERIOR ELEVATION DIMENSIONS TAKEN TO FACE OF GYPSUM WALLBOARD

CONTRACTOR TO VERIFY ALL DIMENSIONS IN FIELD BEFORE ORDERING CABINETS, TYP

IF FILLER EXCEEDS 3" INCREASE CABINETS TO NEXT SIZE

SEE ELECTRICAL DRAWINGS FOR PLUG AND SWITCH LOCATIONS

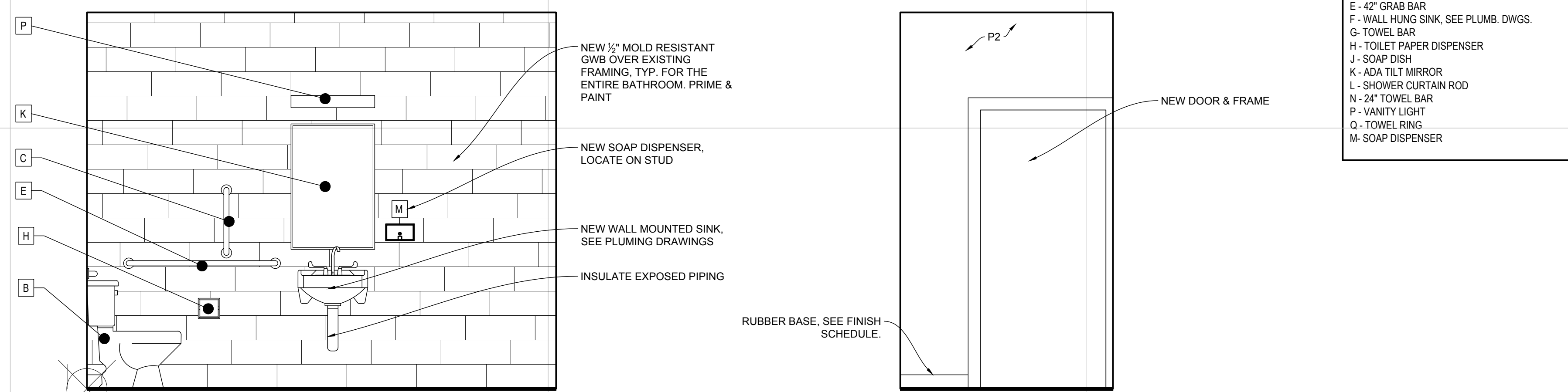
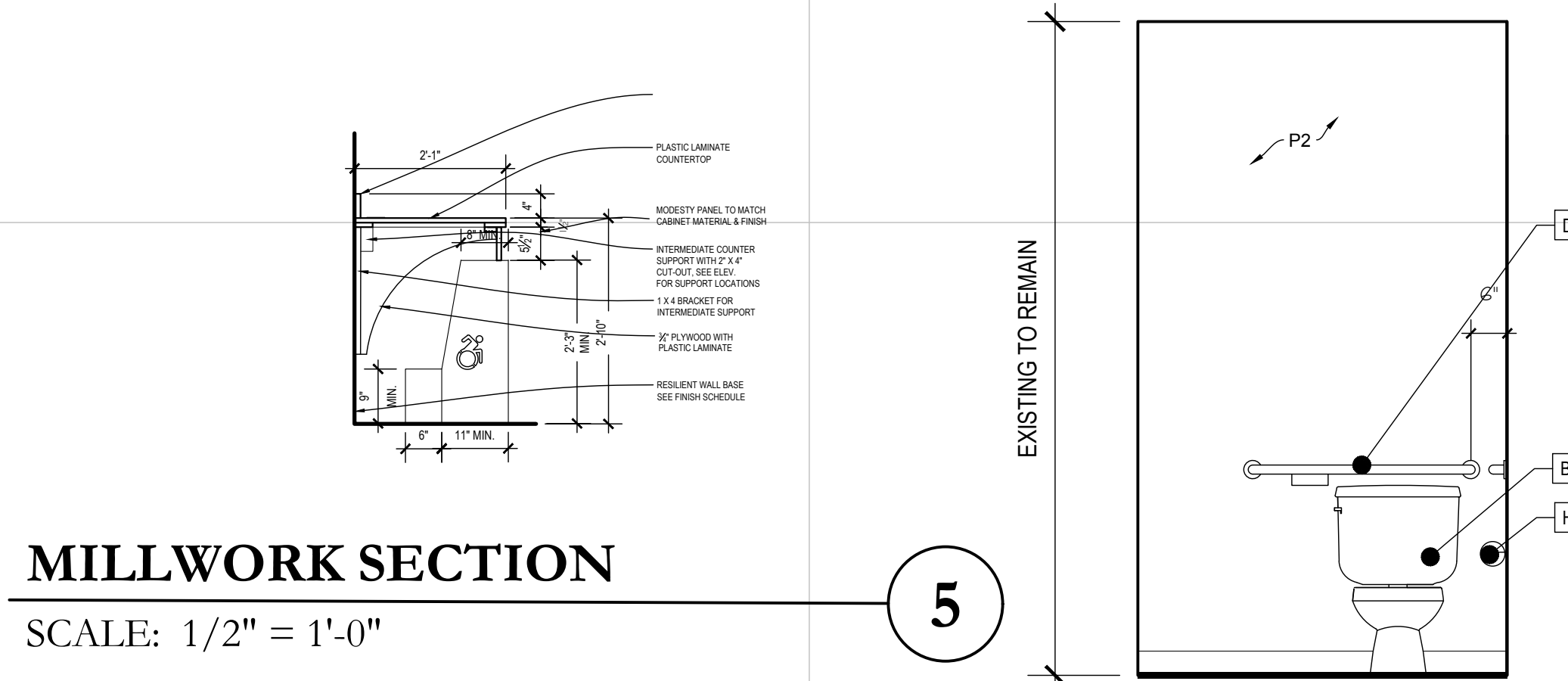
PAINT ALL KITCHEN AND BATHROOM WALLS AND DOOR AND WINDOW TRIM.

ALL EXPOSED END PANELS TO BE FINISHED

ALL APPLIANCES ARE TO BE NEW, COORDINATE DISPOSAL WITH TENANT/OWNER. GC TO CARRY ALL DISPOSAL COST.

BATHROOM FIXTURE LEGEND

- A - BEST BATH SHOWER-MODEL# SLE2633AIFTB
- B - COMFORT HEIGHT TOILET, SEE PLUMB. DWGS
- C - 18" VERTICAL GRAB BAR
- D - 36" GRAB BAR
- E - 42" GRAB BAR
- F - WALL HUNG SINK, SEE PLUMB. DWGS.
- G - TOWEL BAR
- H - TOILET PAPER DISPENSER
- J - SOAP DISH
- K - ADA TILT MIRROR
- L - SHOWER CURTAIN ROD
- N - 24" TOWEL BAR
- P - VANITY LIGHT
- Q - TOWEL RING
- M - SOAP DISPENSER



ADA BATHROOM ELEVATION A
 SCALE: 1/2" = 1'-0"

ADA BATHROOM ELEVATION B
 SCALE: 1/2" = 1'-0"

ADA BATHROOM ELEVATION C
 SCALE: 1/2" = 1'-0"

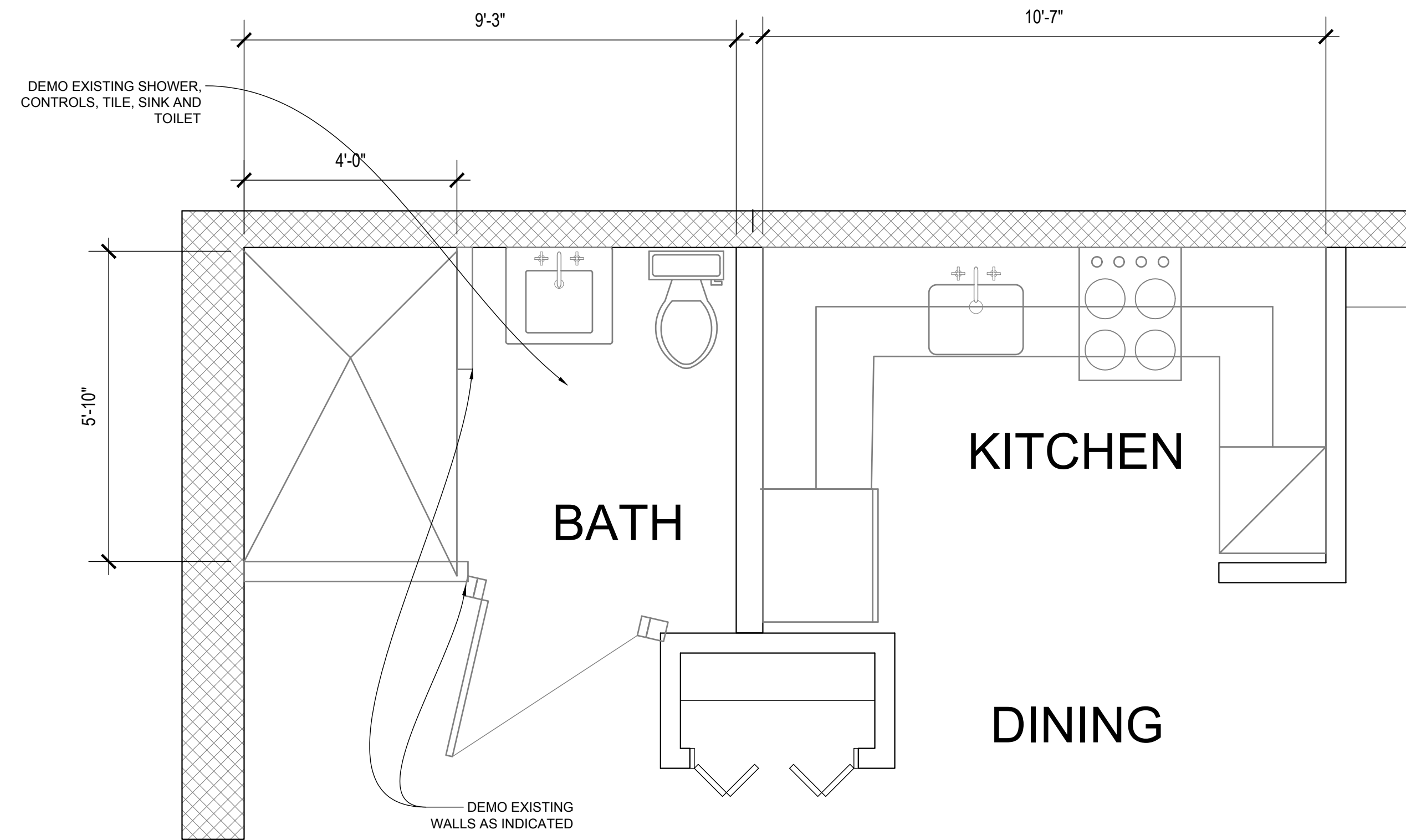
CRITICAL NEEDS IMPROVEMENTS AT:
 McKENNA COURT
 WALLINGFORD HOUSING AUTHORITY
 WALLINGFORD, CT

Sheet Description:
INTERIOR ELEVATIONS

Issue Dates: 3/25/19
 ADDENDUM #1 - 4/26/19

Project #: 1929
 Drawn By:

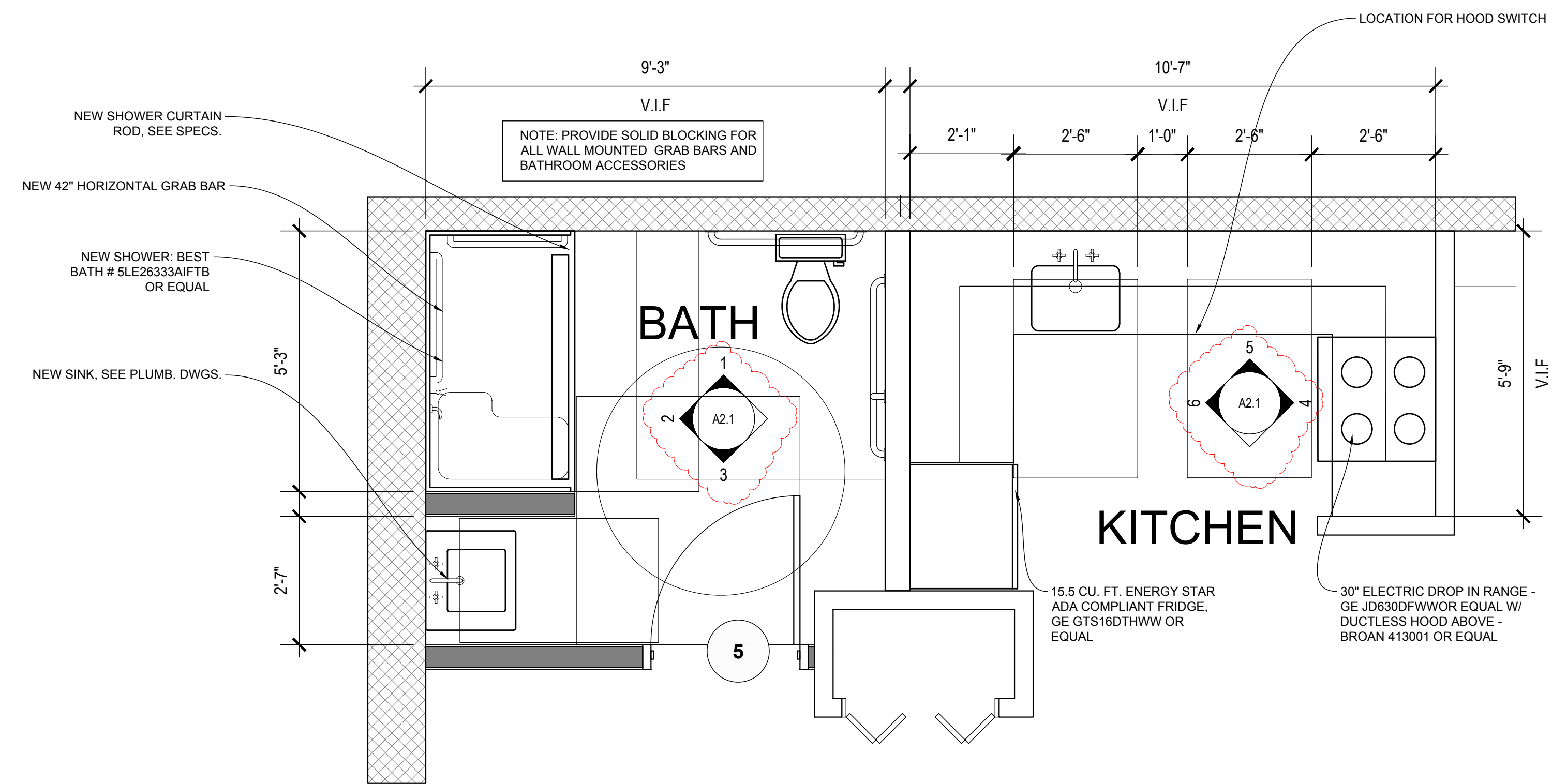
Sheet #:
A1.3r



DEMO ADA UNIT (BLDG. 1)

SCALE: 1/4" = 1'-0"

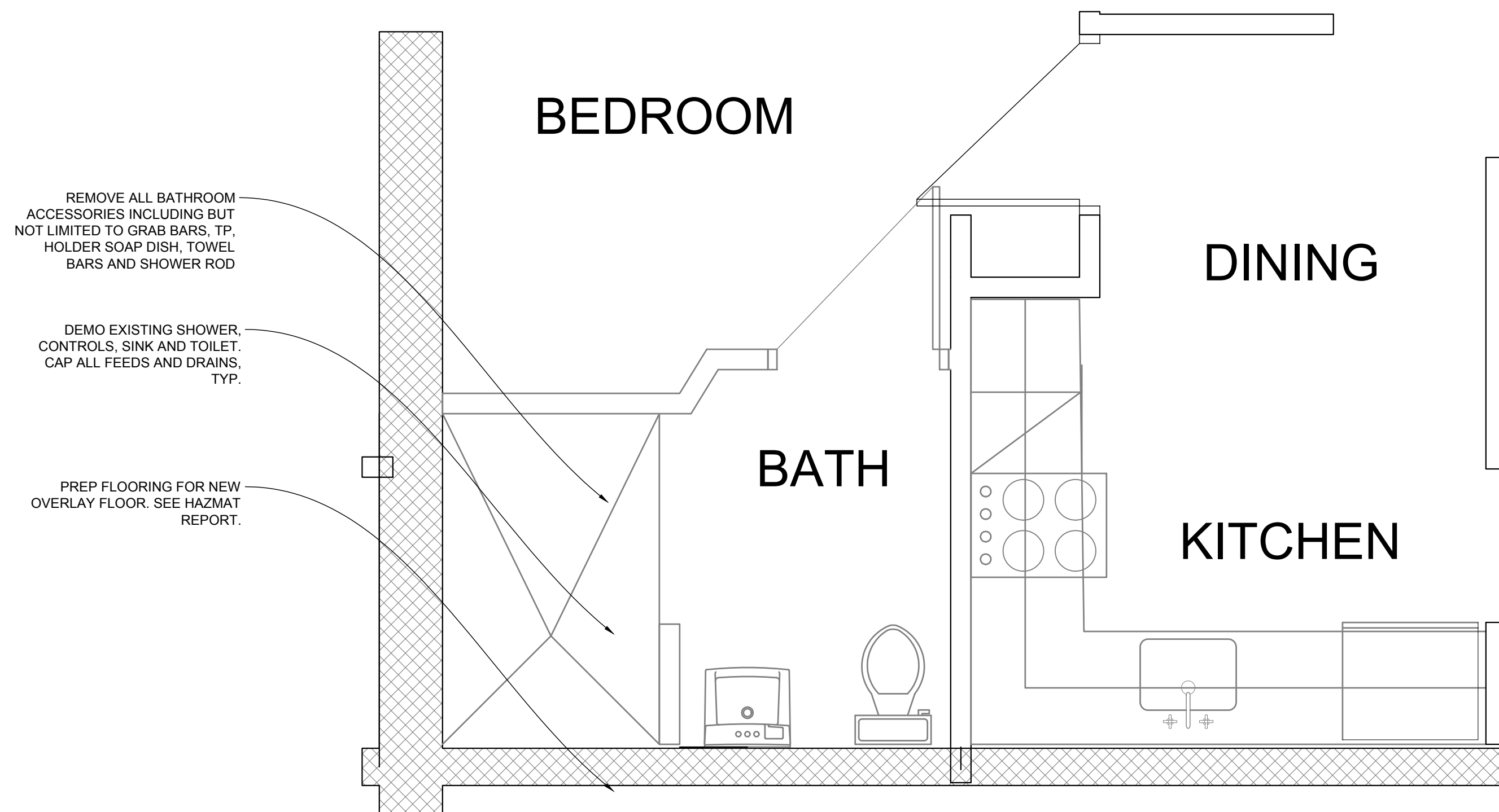
3



PROPOSED ADA UNIT (BLDG. 1)

SCALE: 1/4" = 1'-0"

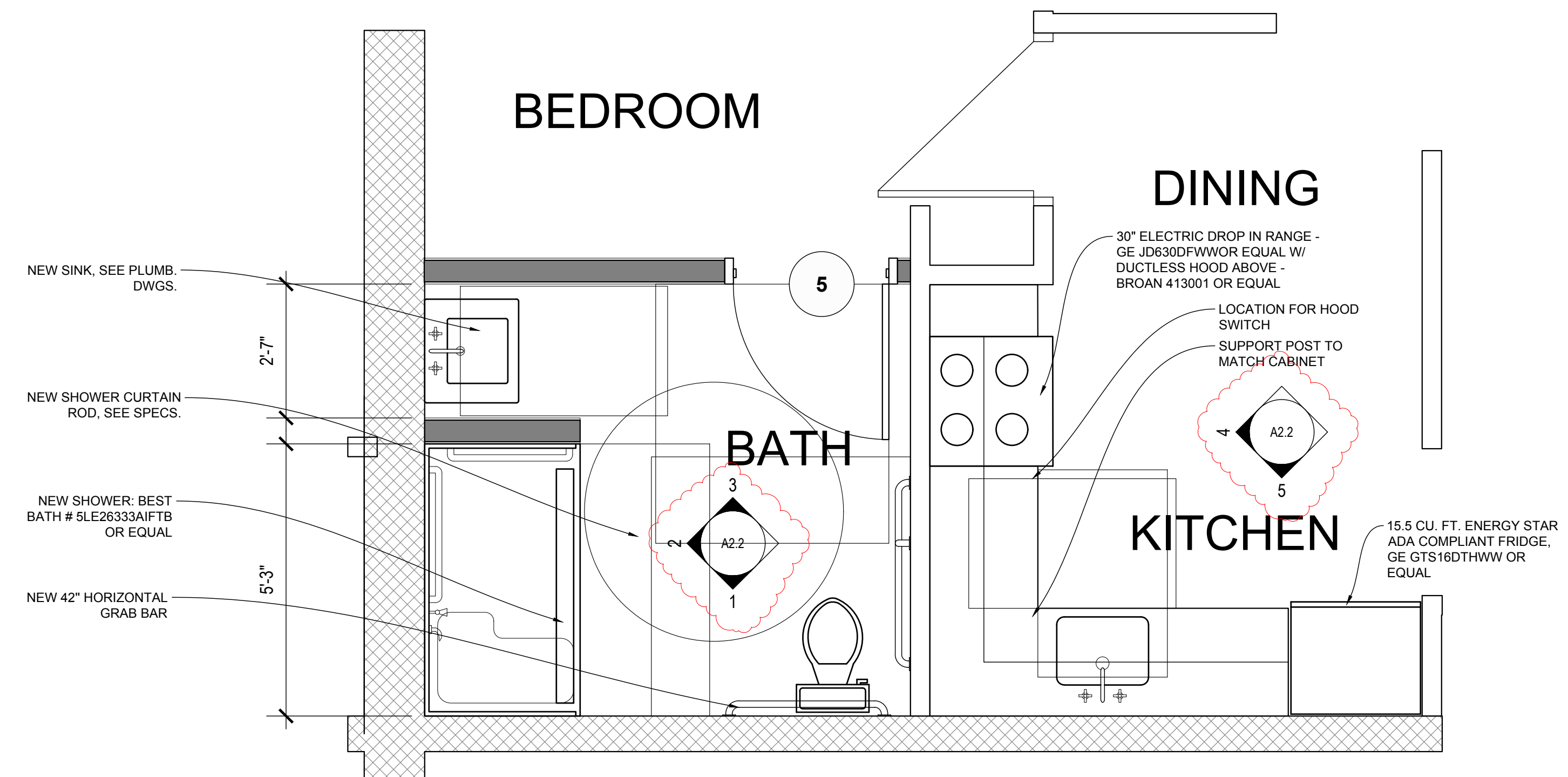
4



DEMO ADA UNIT (BLDG. 2)

SCALE: 1/4" = 1'-0"

1



PROPOSED ADA UNIT (BLDG. 2)

SCALE: 1/4" = 1'-0"

2

CRITICAL NEEDS IMPROVEMENTS AT:

McKENNA COURT
 WALLINGFORD HOUSING AUTHORITY

McKENNA COURT
 WALLINGFORD, CT

Sheet Description:

ENLARGED ADA UNITS

Issue Dates: 3/25/19

ADDENDUM #1 - 4/26/19

Project #: 1929

Drawn By:

Sheet #:

A2.0r