

Town of West Hartford

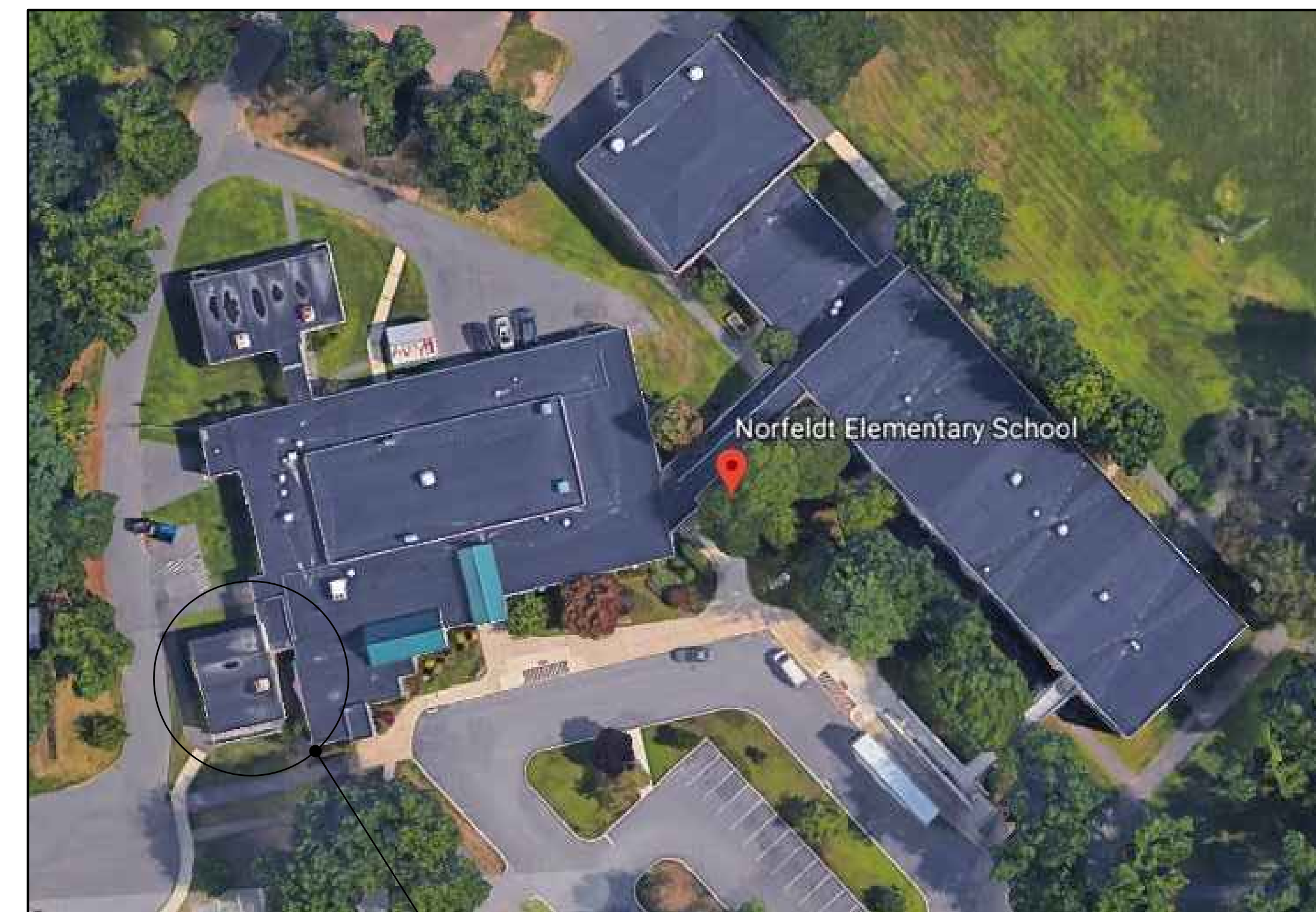
Wolcott and Norfeldt Schools - Portables Demo

17 Brixton Street
West Hartford, CT 06110



PORTABLE CLASSROOM
BUILDING TO BE DEMOLISHED

WOLCOTT ELEMENTARY SCHOOL
71 Wolcott Road
West Hartford, CT 06110



PORTABLE CLASSROOM
BUILDING TO BE DEMOLISHED

NORFELDT ELEMENTARY SCHOOL
35 Barksdale Rd.
West Hartford, CT 06117

Drawing List

Cover

- A01 Norfeldt School Plans, Details, and Photos
- A02 Wolcott School Plans and Details
- A03 Wolcott School Sections and Photos



SILVER / PETRUCELLI + ASSOCIATES

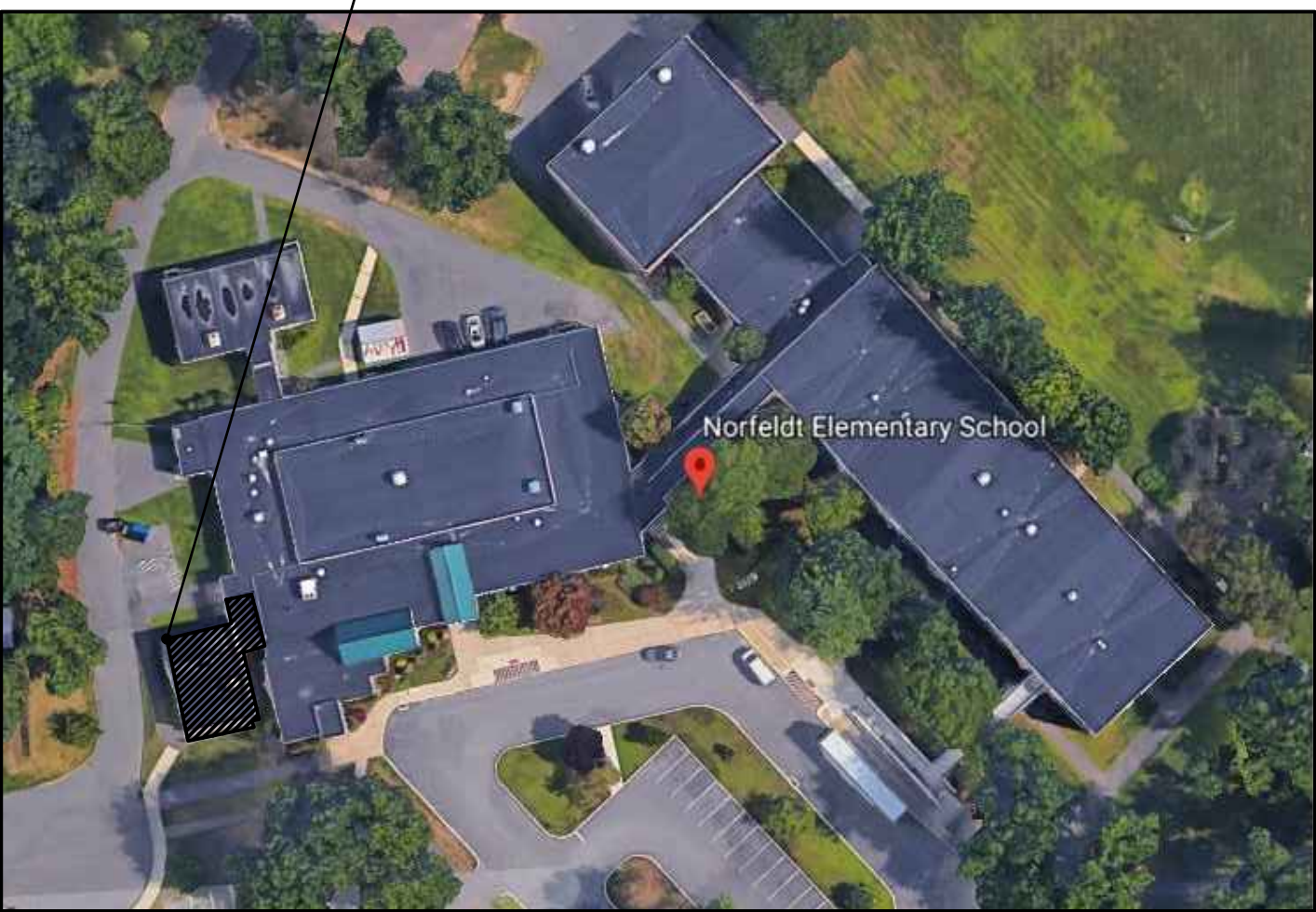
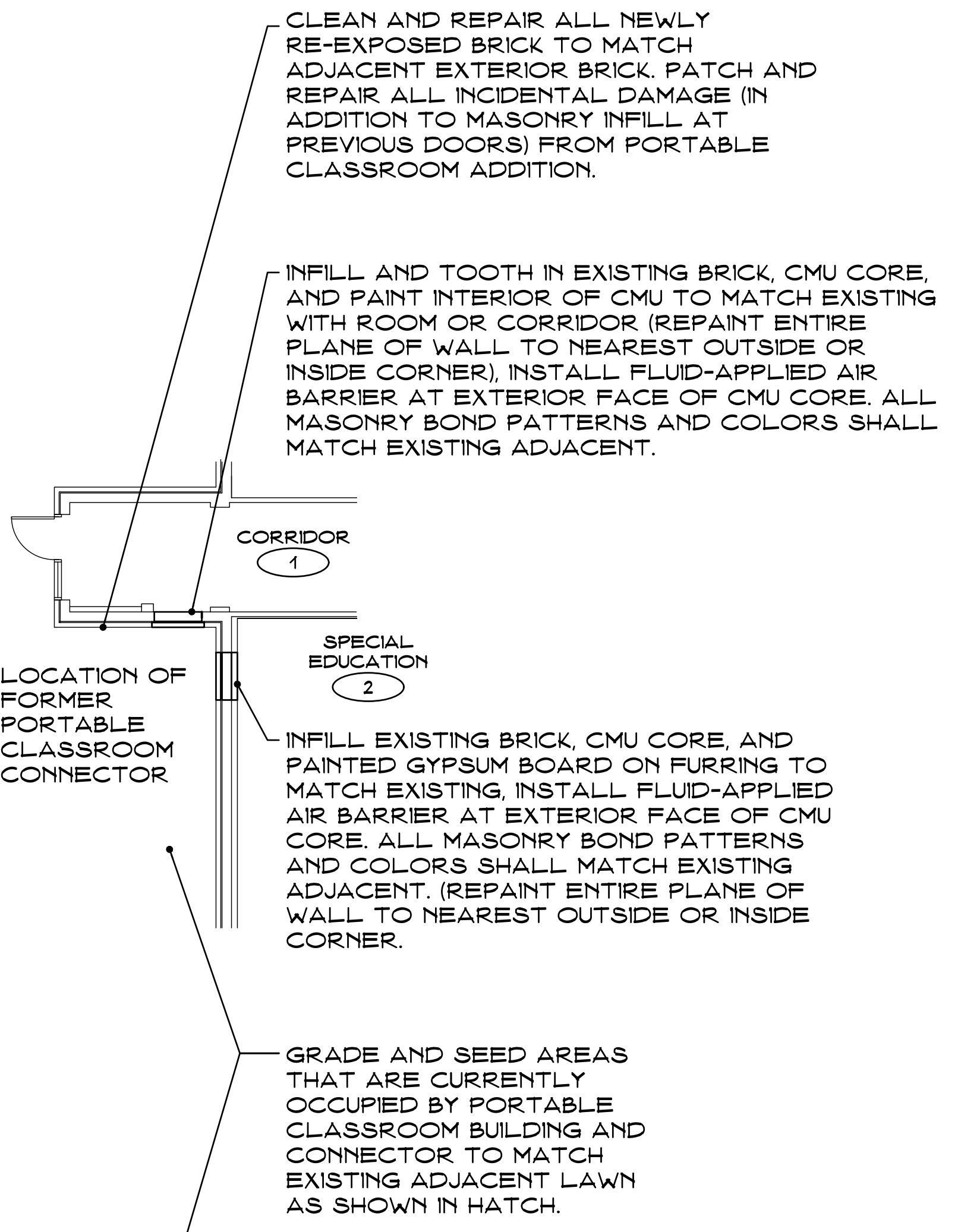
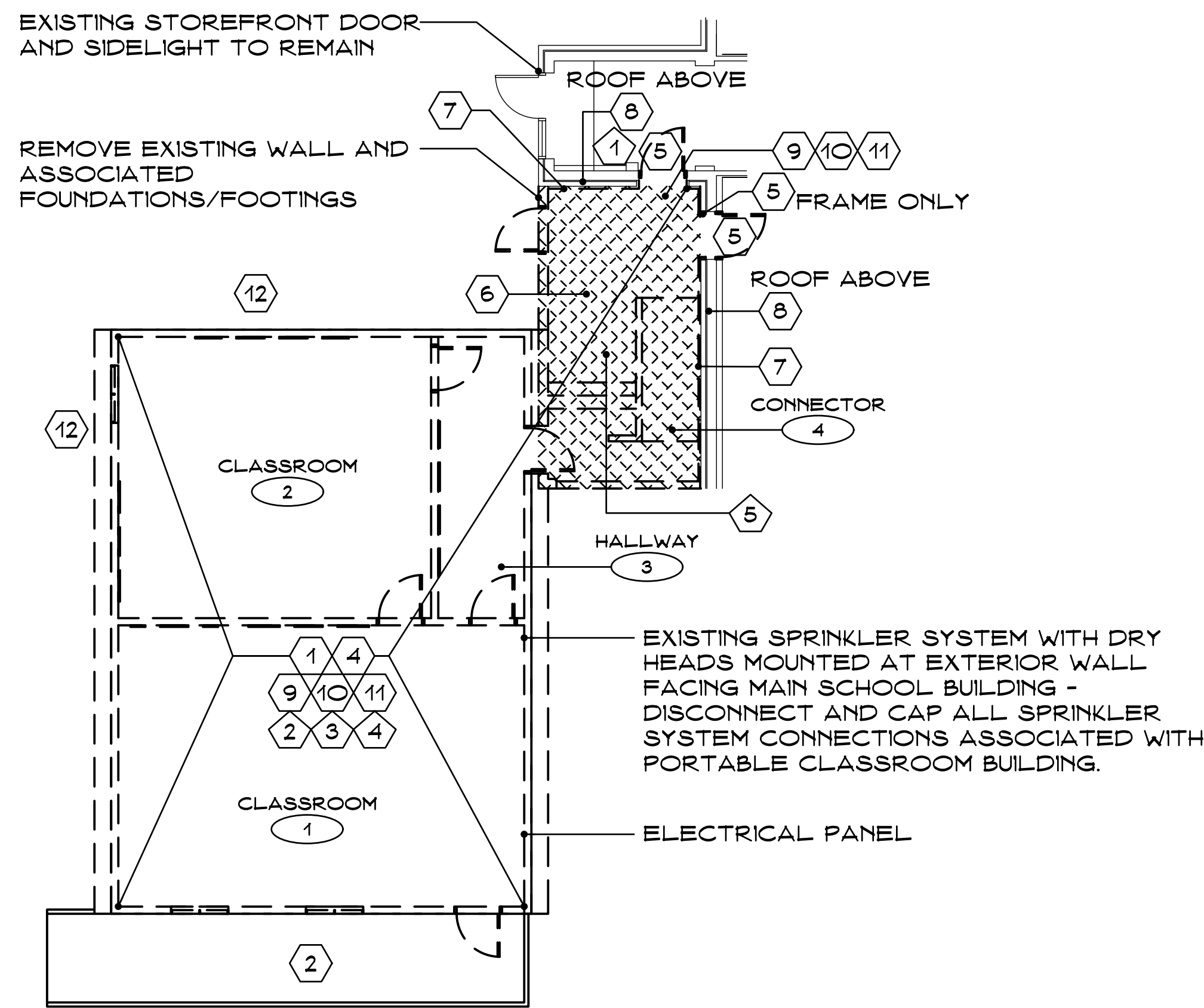
Architects / Engineers / Interior Designers

3190 Whitney Avenue, Hamden, CT 06518-2340

Tel. 203 230 9007 Fax. 203 230 8247

silverpetrucelli.com

March 22, 2019



DEMOLITION PLAN - NORFELDT SCHOOL
SCALE: 1/4" = 1'-0"

CONSTRUCTION PLAN - NORFELDT SCHOOL
SCALE: 1/4" = 1'-0"

SYMBOL LEGEND

- EXISTING WALLS TO REMAIN
- NEW MASONRY UNIT WALLS
- NEW METAL STUD WALLS SEE WALL/PARTITION TYPES
- NEW DOOR, SEE SCHEDULE
- DOOR NUMBER - ALSO SEE DOOR SCHEDULE
- ROOM ROOM NAME - ALSO SEE FINISH SCHEDULE
ROOM NUMBER - ALSO SEE FINISH SCHEDULE
- SECTION NUMBER SHEET NUMBER
- ELEVATION NUMBER SHEET NUMBER
- DETAIL NUMBER SHEET NUMBER
- REVISION TAG
- SIGN LOCATION, ALSO SEE DOOR SCHEDULE AND DETAIL 3/A/5 - NOT ALL SIGNS SHOWN IN PLAN

CODES TO WHICH THIS PROJECT IS DESIGNED TO

State Building Code w/Supplement	2015 IBC CBSBC
State Building Code w/Supplement	2018 CT AMENDMT.
State Fire Code w/Supplement	2015 IFG CTSFSC
State Fire Code w/Supplement	2018 CT AMENDMT.
Connecticut State Fire Prevention Code	most current
State Health Code	most current
OSHA	current
Section 504	current
ADA	most current

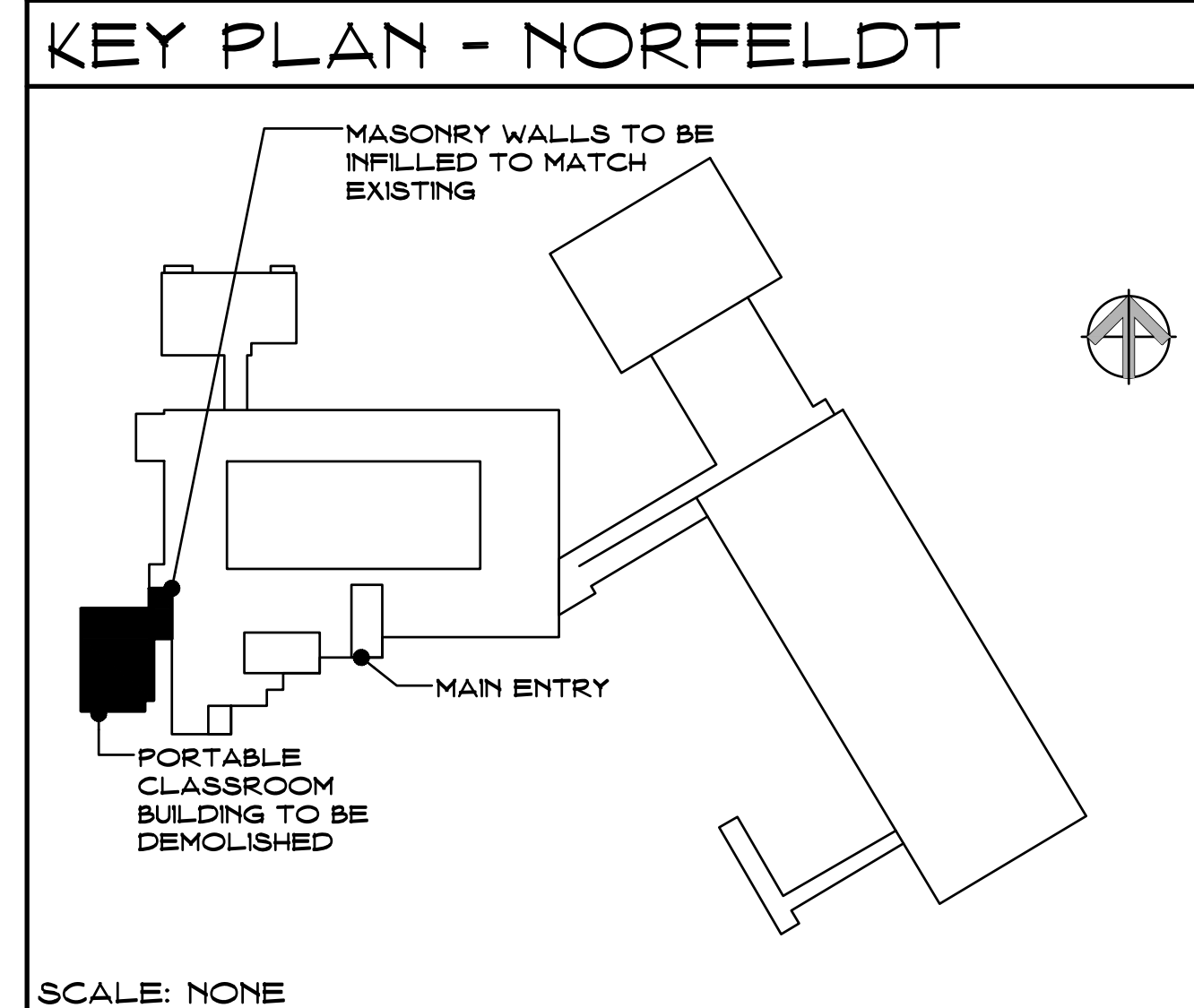
SYMBOL LEGEND

- EXISTING WALLS TO REMAIN
- EXISTING WALLS TO BE REMOVED
- EXISTING PLUMBING FIXTURES TO BE REMOVED, SEE ALSO PLUMBING DRAWINGS
- DASHED LINES INDICATE REMOVALS, SEE DEMOLITION NOTES ON ARCHITECTURAL AS WELL AS ALL MEP DRAWINGS.
- EXISTING DOOR TO REMAIN, SEE DOOR SCHEDULE FOR WORK REQUIRED
- EXISTING DOOR AND HARDWARE TO BE REMOVED, SEE DOOR SCHEDULE FOR FRAMES TO REMAIN
- REVISION TAG
- ARCHITECTURAL DEMOLITION KEY NOTE
- ELECTRICAL DEMOLITION KEY NOTE

- GENERAL NOTES**
- REFER TO PROJECT MANUAL PRIOR TO ANY DEMOLITION ACTIVITIES.
 - CONTRACTORS SHALL FIELD VERIFY ALL CONDITIONS AND DIMENSIONS.
 - PATCH TO MATCH ALL EXISTING WALLS, FLOORS (INCLUDING SLABS) AND OTHER SURFACES AFFECTED BY REMOVALS.
 - ALL DIMENSIONS ARE TO OUTSIDE FACE OF BRICK, CONCRETE MASONRY UNITS AND GYPSUM WALLBOARDS.
 - COORDINATE ALL DEMOLITION WITH NEW WORK REQUIRED; SEE ALSO ALL OTHER DRAWINGS AND PROJECT MANUAL.

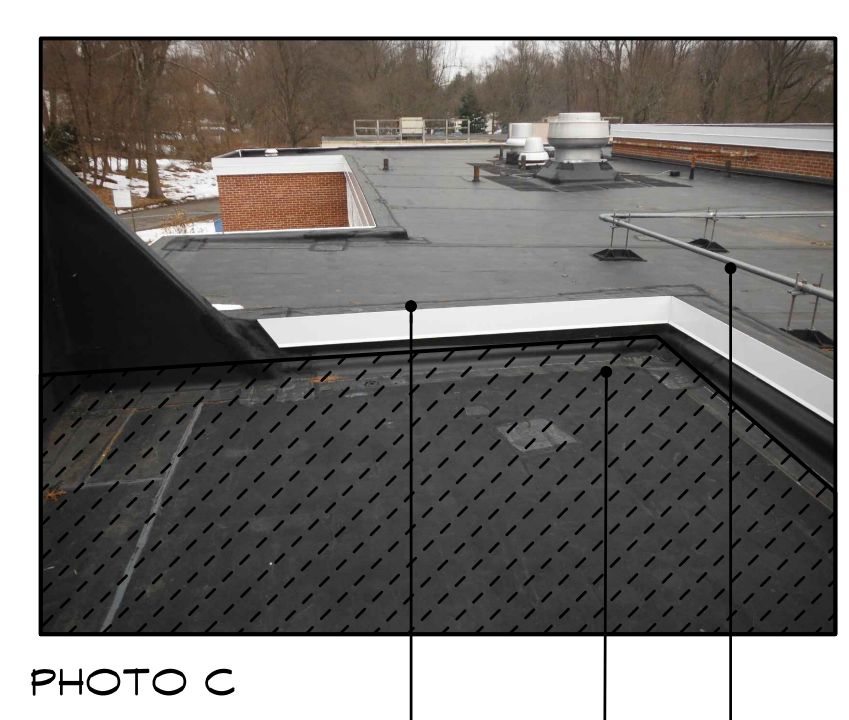
- DEMOLITION KEY NOTES:**
- COMPLETELY DEMOLISH ENTIRE PORTABLE CLASSROOM BUILDING AND ASSOCIATED CONNECTOR, INTERIOR RAMP AND STAIRS AS SHOWN IN DRAWINGS - DEMOLITION TO EXTEND TO FACE OF MAIN SCHOOL BUILDING AS SHOWN ON PLAN AND INDICATED IN NOTES
 - COMPLETELY REMOVE ALL EXTERIOR STAIR AND RAMP SYSTEMS.
 - REMOVE ALL BITUMINOUS AND CONCRETE SIDEWALKS THAT ARE EXCLUSIVELY ASSOCIATED WITH PORTABLE CLASSROOM EXIT/ENTRY POINTS, STAIRS, AND RAMPS
 - COMPLETELY REMOVE ALL FOUNDATIONS AND PIERS ASSOCIATED WITH PORTABLE CLASSROOM BUILDING AND ACCESS RAMPS/STAIRS.
 - REMOVE ALL EXISTING DOORS AND FRAMES THAT PROVIDE EXCLUSIVE ACCESS INTO PORTABLE CLASSROOMS AND ASSOCIATED CONNECTOR
 - COMPLETELY REMOVE CONCRETE SLAB ON GRADE AS SHOWN BY CROSS HATCHING - REMOVAL TO EXTEND TO FACE OF MAIN SCHOOL BUILDING FOUNDATION/EXTERIOR WALL - (HATCH IS AN APPROXIMATE AREA)
 - REMOVE ALL FURRING/FRANING/INTERIOR FINISHES AT PORTABLE CLASSROOM BUILDING CONNECTOR THAT IS ATTACHED TO EXTERIOR MASONRY WALLS OF MAIN BUILDING
 - REMOVE ALL ROOF FLASHING AND BLOCKING THAT IS ASSOCIATED WITH PORTABLE CLASSROOM BUILDING ATTACHMENT TO MAIN BUILDING
 - DISCONNECT ALL ELECTRICAL SERVICES ASSOCIATED EXCLUSIVELY WITH PORTABLE CLASSROOM BUILDING - SEE ELECTRICAL DEMOLITION KEY NOTES
 - DISCONNECT AND CAP ALL PLUMBING CONNECTIONS ASSOCIATED EXCLUSIVELY WITH PORTABLE CLASSROOM BUILDING
 - DISCONNECT AND CAP ALL HVAC AND DUCTWORK ASSOCIATED EXCLUSIVELY WITH PORTABLE CLASSROOM BUILDING - CAP ALL CONNECTIONS TO MAIN SCHOOL BUILDING
 - REMOVE ALL PLANTING AT PERIMETER OF PORTABLE CLASSROOM BUILDING IN PREPARATION FOR REGRADING AND SEEDING.

- ELECTRICAL DEMO. KEY NOTES:**
- COMPLETELY REMOVE THE ELECTRICAL PANEL FEEDER (CONDUIT AND WIRING) FOR THE PORTABLE CLASSROOM PANEL. FEEDER TO BE REMOVED BACK TO THE JUNCTION BOX AT THE EDGE OF THE ROOF. EXISTING CONDUIT AND WIRING ALONG ROOF IS TO REMAIN. REMOVE WIRING FROM CIRCUIT BREAKER IN MAIN SWITCHBOARD, LABEL, AND MAKE SAFE. CIRCUIT BREAKER TO BE TURNED OFF AND LABELED AS 'SPARE'
 - ALL PORTABLE CLASSROOM BUILDING LIGHTING, TIMECLOCKS, POWER, AC, HEAT AND EXTERIOR LIGHTING CIRCUITS TO BE REMOVED COMPLETE.
 - ALL PORTABLE CLASSROOM BUILDING FIRE ALARM DEVICES AND ASSOCIATED WIRING TO BE REMOVED COMPLETE BACK TO SOURCE. ALL FIRE ALARM CIRCUITS ARE TO MAINTAIN CIRCUIT CONTINUITY. FIRE ALARM CONTROL PANEL DIRECTORY TO BE UPDATED.
 - ALL PORTABLE CLASSROOM BUILDING INTERCOM DEVICES AND WIRING, INCLUDING TELEPHONES, ARE TO BE REMOVED COMPLETE BACK TO SOURCE.
 - EXISTING ELECTRIC WALL HEATER IN STAIR/RAMP AREA TO BE REMOVED. CONDUIT AND WIRING TO BE REMOVED COMPLETE BACK TO SOURCE PANEL.



TYPICAL EXAMPLE OF ROOF FASCIA AND ROOF FLASHING TO BE MATCHED AT PORTABLE CLASSROOM CONNECTOR REMOVAL

REPLACE ALL ROOF FLASHING AND FASCIAS AT AFFECTED WALLS. PROFILES, COLORS, AND ELEVATIONS TO MATCH EXISTING ADJACENT AREAS. ALL ROOF FLASHING SHALL BE COMPATIBLE TO EXISTING ROOF TYPE. ALL NEW ROOF MEMBRANE FLASHING SHALL EXTEND MINIMUM 8" HORIZONTAL FROM EDGE OF ROOF. CONTRACTOR TO VERIFY EXISTING ROOF TYPE FOR COMPATIBILITY OF ROOF FLASHING



ROOF OVER CONNECTOR (RAMP AND STAIRS) - VIEW LOOKING NORTH

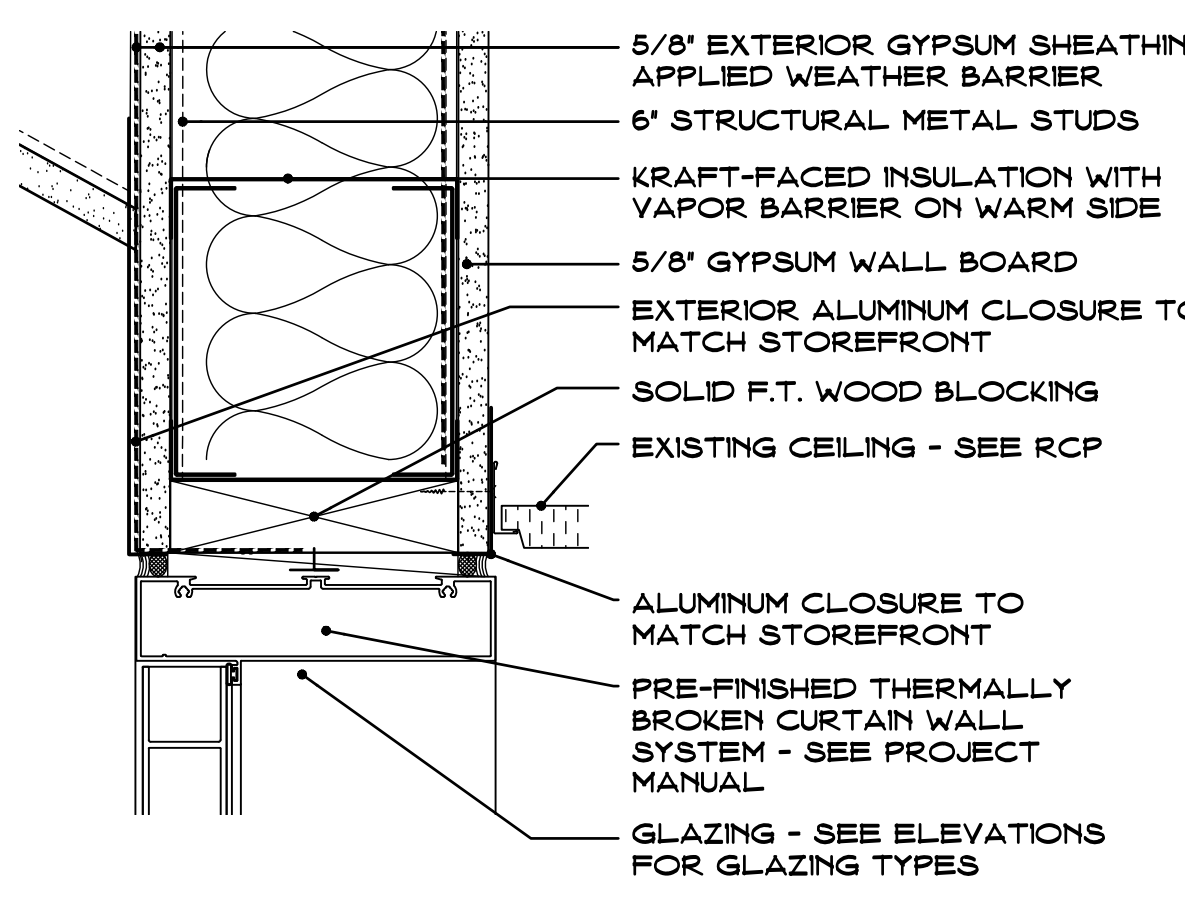
REMOVE EXISTING FASCIA, FLASHING, AND EXPANSION JOINT COVER. REPLACE FLASHING AND FASCIA TO MATCH ADJACENT EXAMPLES AS SHOWN IN PHOTOS A AND B

FASCIA AND FLASHING TO BE MATCHED AT AREAS OF REPAIR

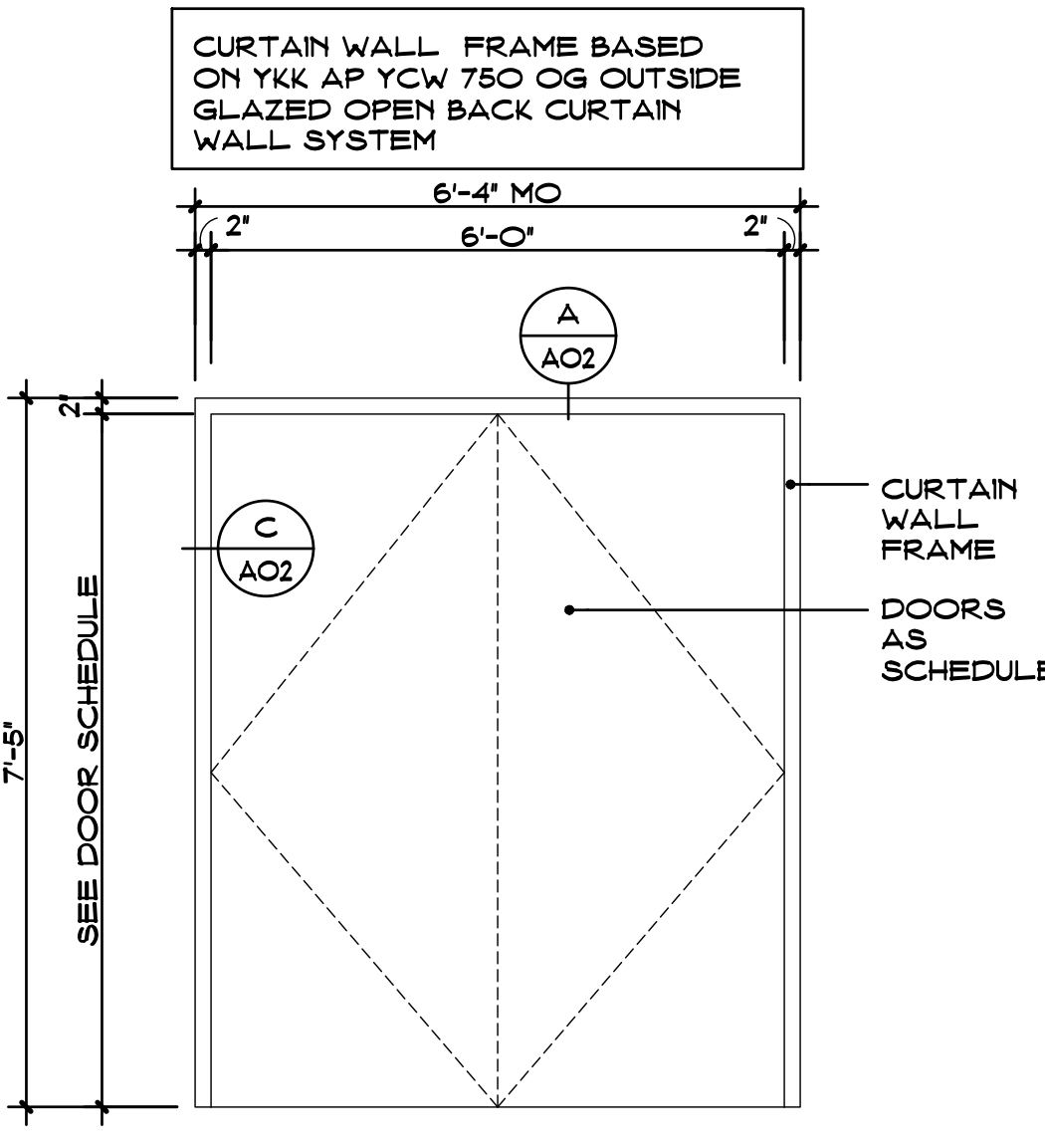
EXISTING CONDUITS - SEE ELECTRICAL DEMOLITION KEY NOTES

HATCH INDICATES PORTION OF BUILDING IN THIS PHOTO TO BE DEMOLISHED

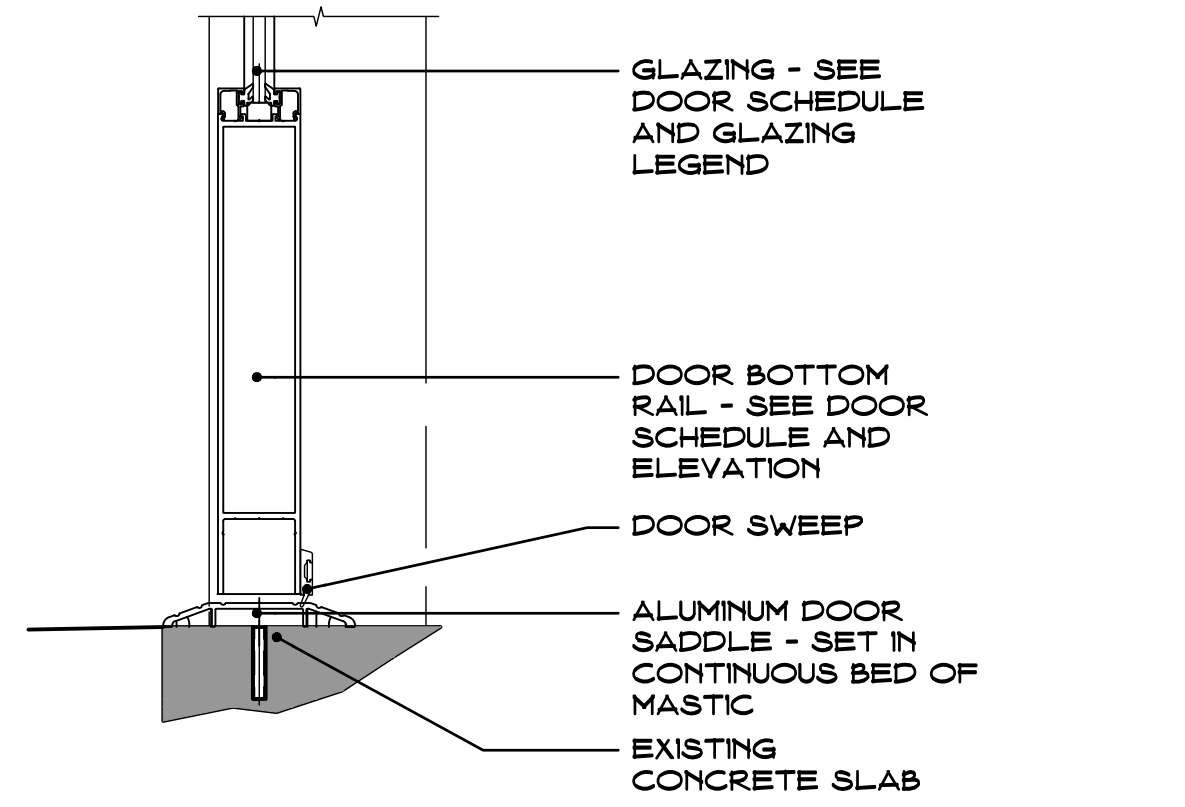
FLASHING AT EXISTING MAIN BUILDING TO PORTABLE BUILDING CONNECTOR TO BE REMOVED



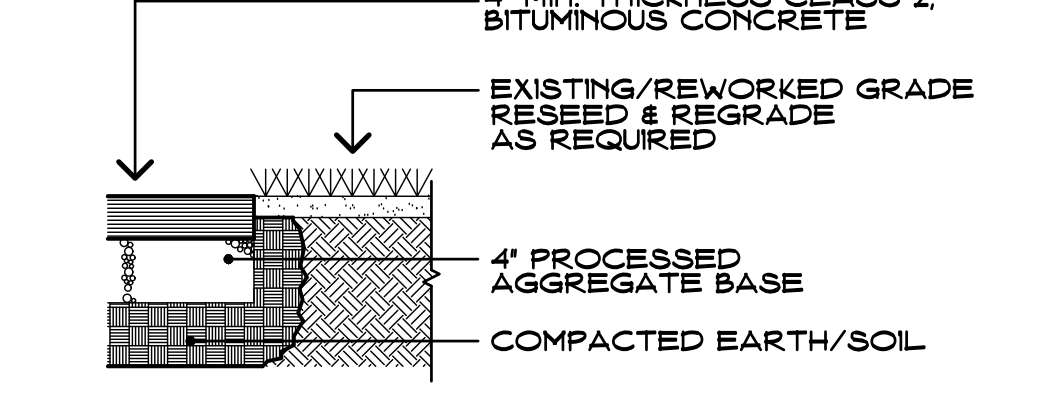
DOOR HEAD DETAIL - STOREFRONT (A AO2)



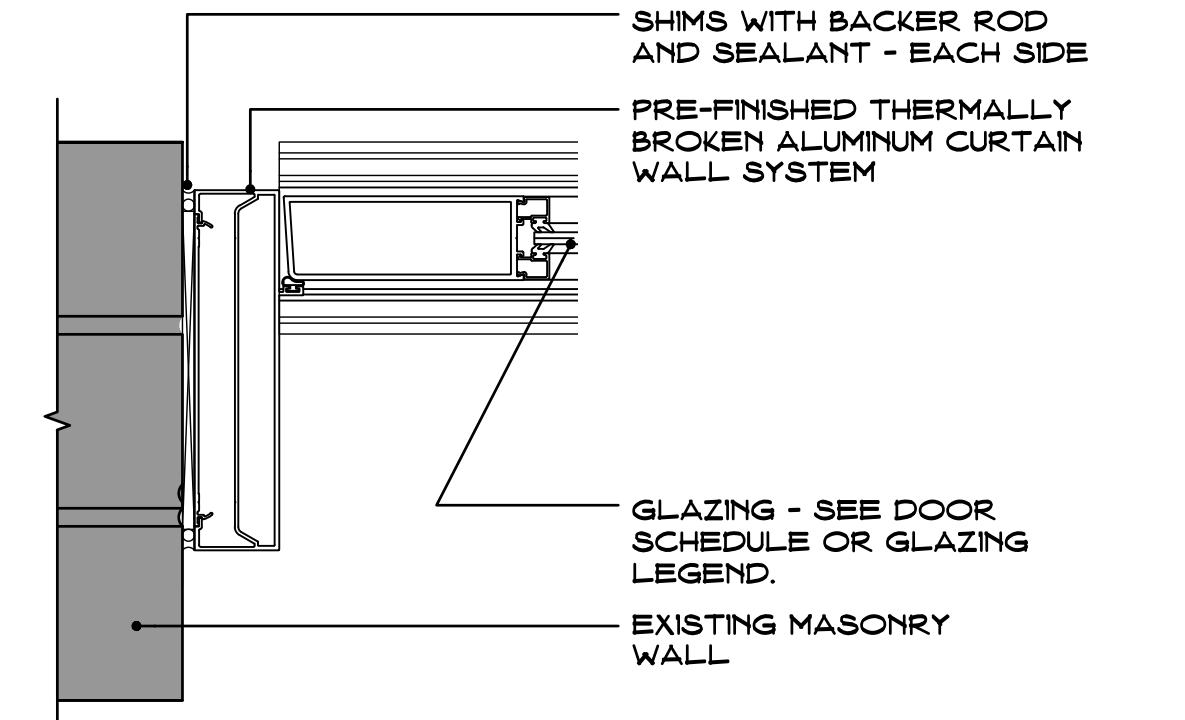
TYPE 1 CURTAIN WALL FRAME ELEVATION (E AO2)



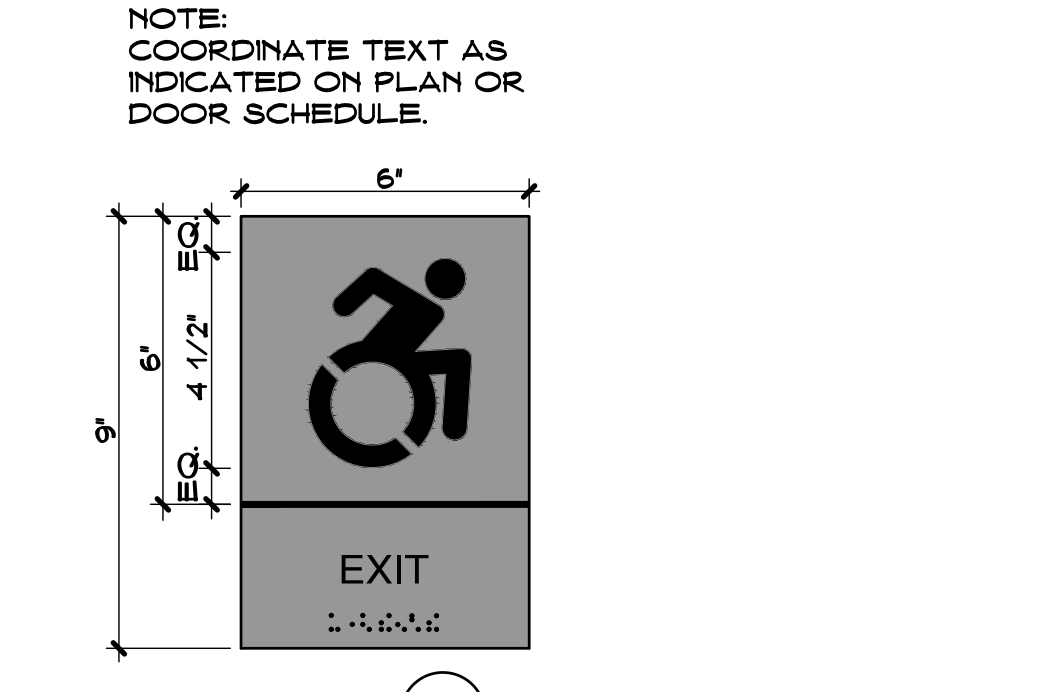
SILL - STOREFRONT (B AO2)



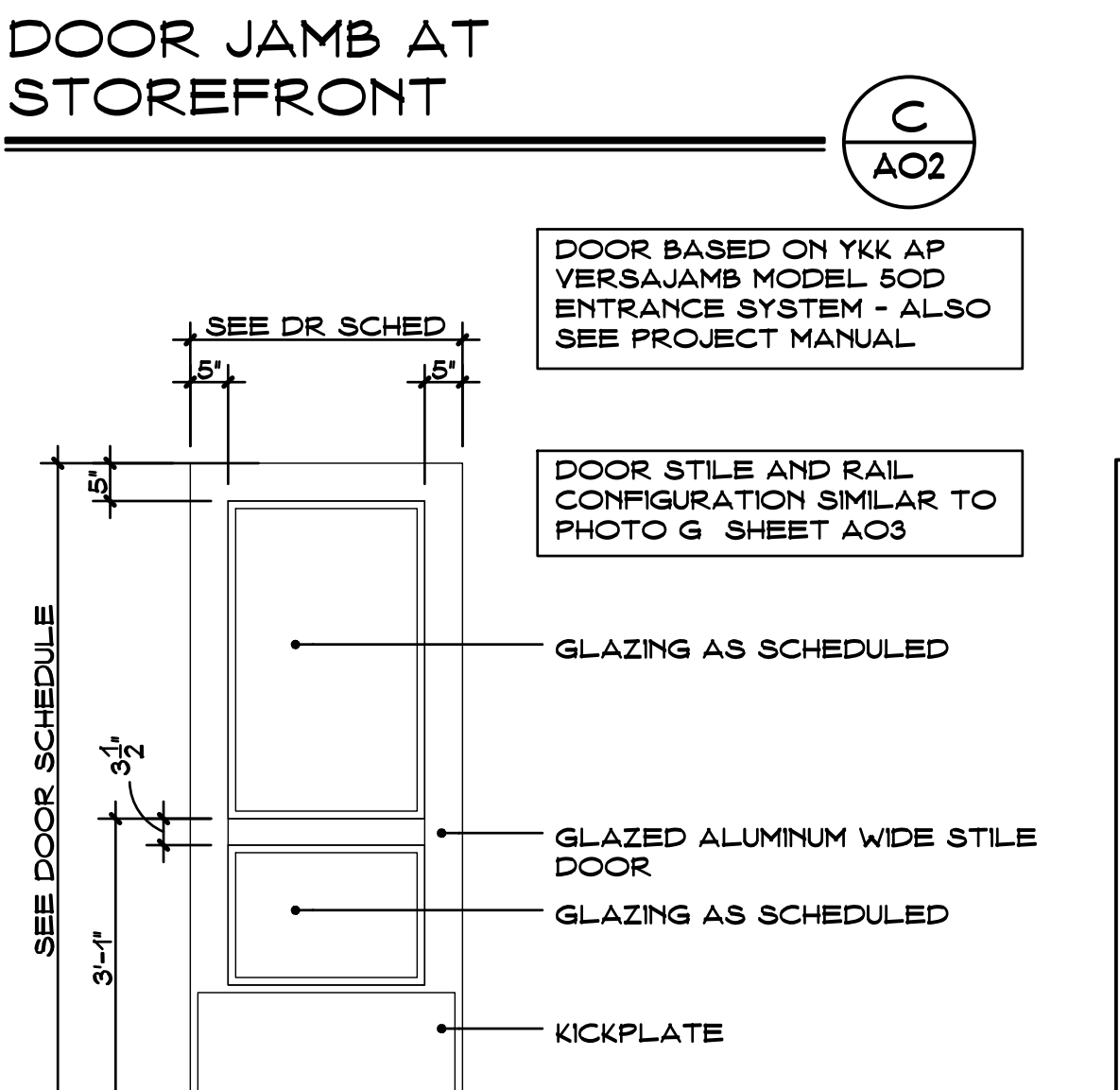
BITUMINOUS PAVING (F AO2)



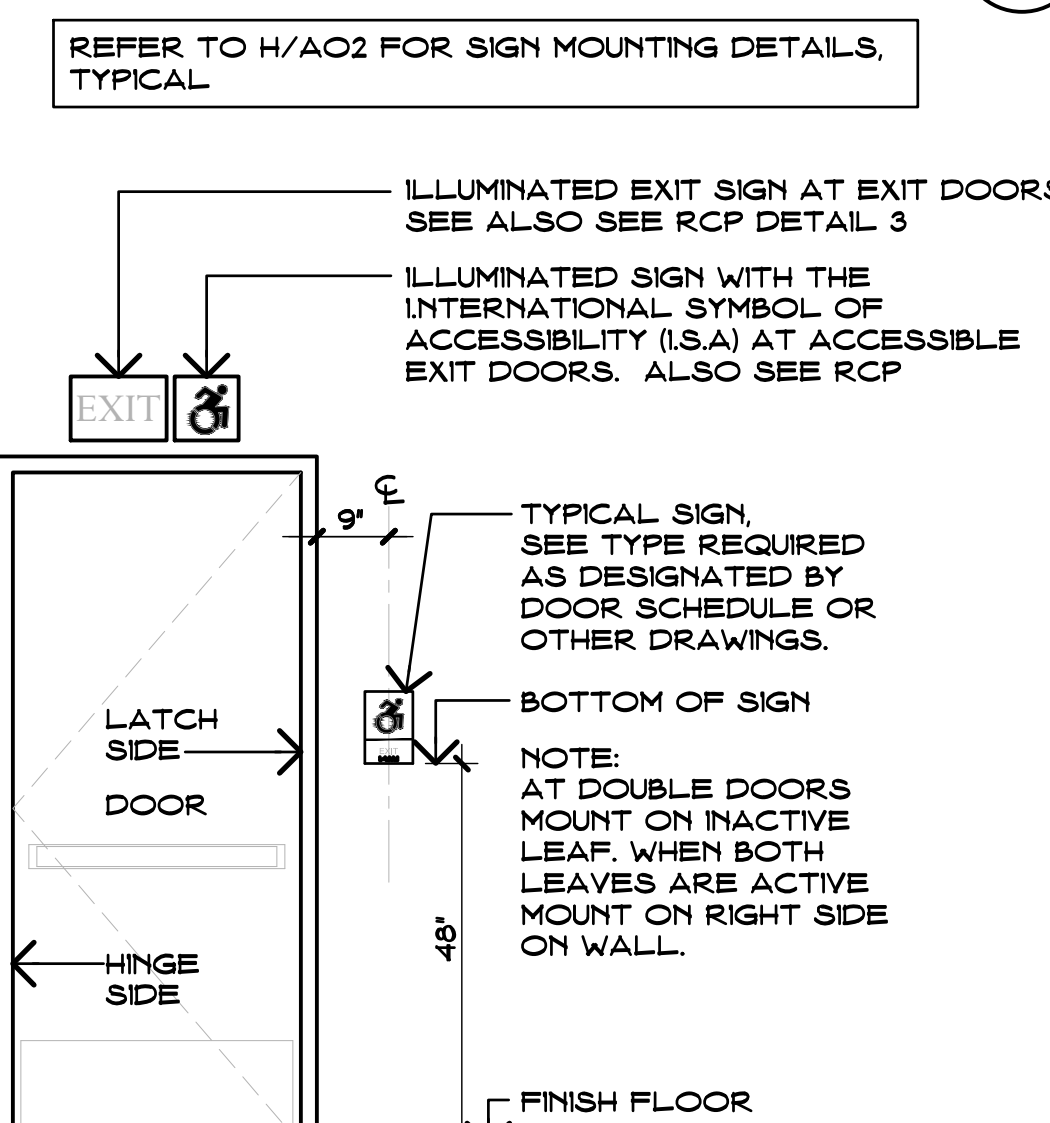
DOOR JAMB AT STOREFRONT (C AO2)



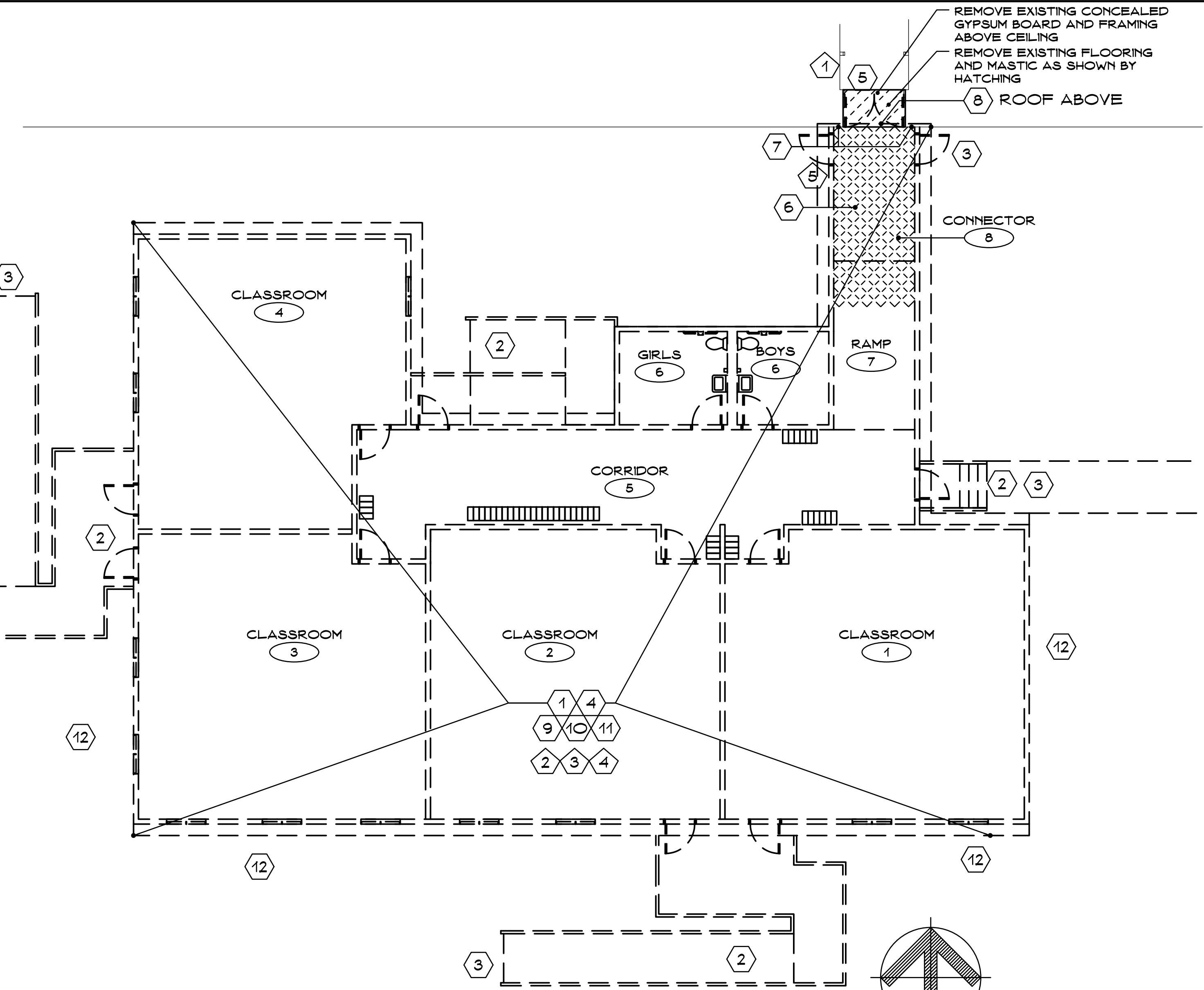
TYPE (S1) SIGNAGE TYPE DETAILS (G AO2)



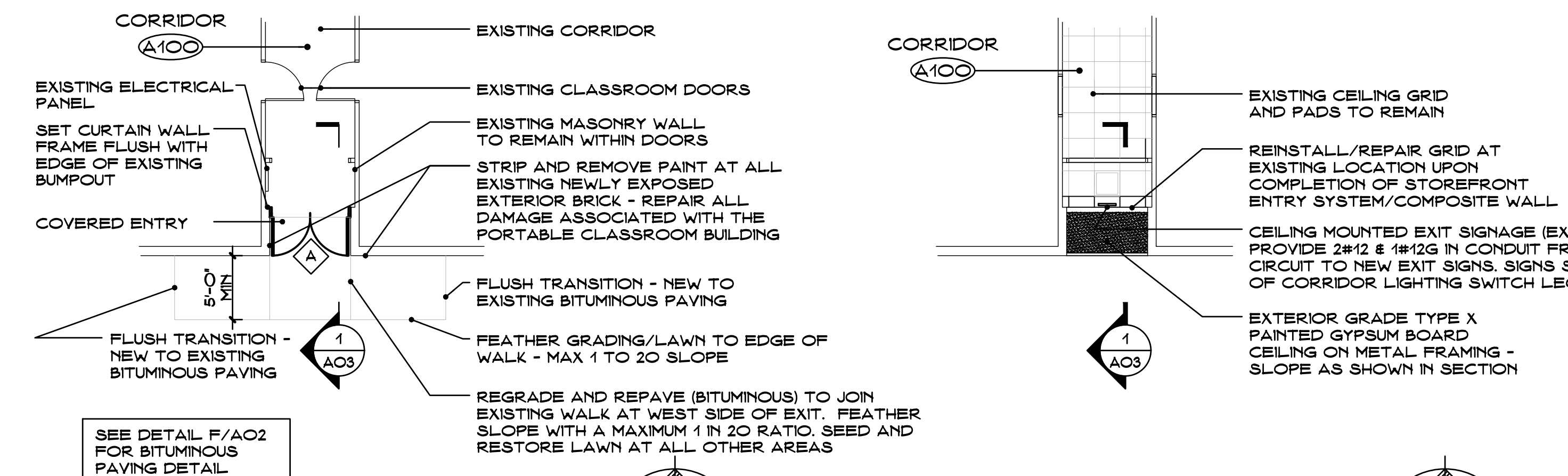
TYPE A DOOR ELEVATION (D AO2)



TYPICAL EXIT SIGNS MOUNTING DETAILS (H AO2)



DEMOLITION PLAN - WOLCOTT SCHOOL (1 AO2) SCALE: 1/4" = 1'-0"



CONSTRUCTION PLAN - WOLCOTT SCHOOL (2 AO2) SCALE: 1/4" = 1'-0"

SYMBOL LEGEND containing symbols for existing walls, new masonry walls, doors, rooms, sections, elevations, revisions, and sign locations.

R.C.P. SYMBOL LEGEND containing symbols for suspended ceiling systems, lighting fixtures, supply diffusers, and return grilles.

GLAZING LEGEND (3 AO2) defining GL-10 as low-E-coated, tempered, insulated glass and providing reference to door schedule and project manual.

DOOR SCHEDULE table with columns for Door, Frame, Fire Rating, Hardware, and Remarks. Includes rows for Corridor, Classroom, and Exit doors.

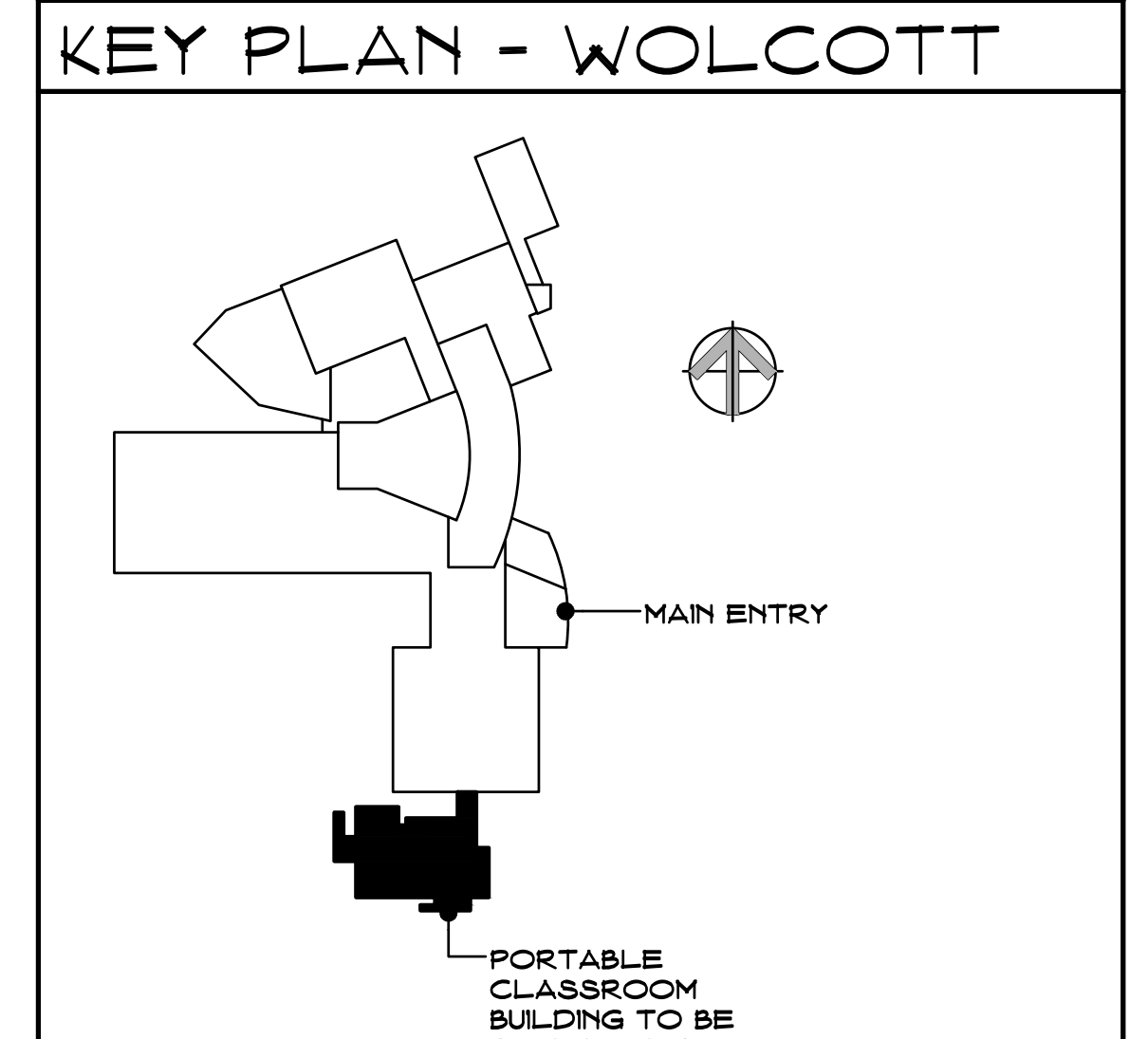
GENERAL DOOR NOTES and SCHEDULE REMARKS providing contractor instructions regarding door materials, hardware, and sign placement.

SYMBOL LEGEND (continued) with symbols for existing walls to be removed, plumbing fixtures, door types, and revision tags.

GENERAL NOTES providing project requirements and demolition instructions.

DEMOLITION KEY NOTES (6) and ELECTRICAL DEMO. KEY NOTES (6) detailing specific demolition and electrical removal tasks.

ELECTRICAL DEMO. KEY NOTES (continued) providing further details on electrical panel removal and wiring.



KEY PLAN - WOLCOTT SCALE: NONE

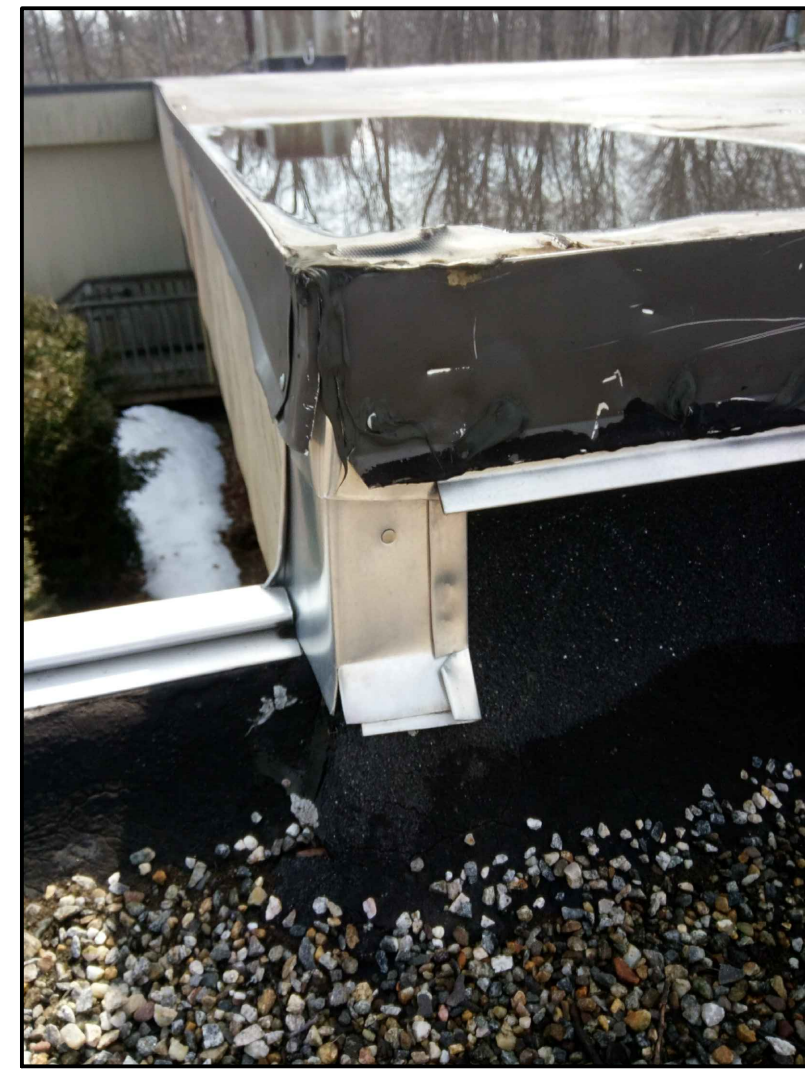


PHOTO A
CLOSE UP OF PORTABLE CLASSROOM ROOF STRUCTURE BUILT OVER EXISTING MAIN BUILDING PARAPET/FASCIA



PHOTO B
EXISTING RAISED ROOF AT PORTABLE CLASSROOM CONNECTOR TO EXISTING MAIN BUILDING LOCATION

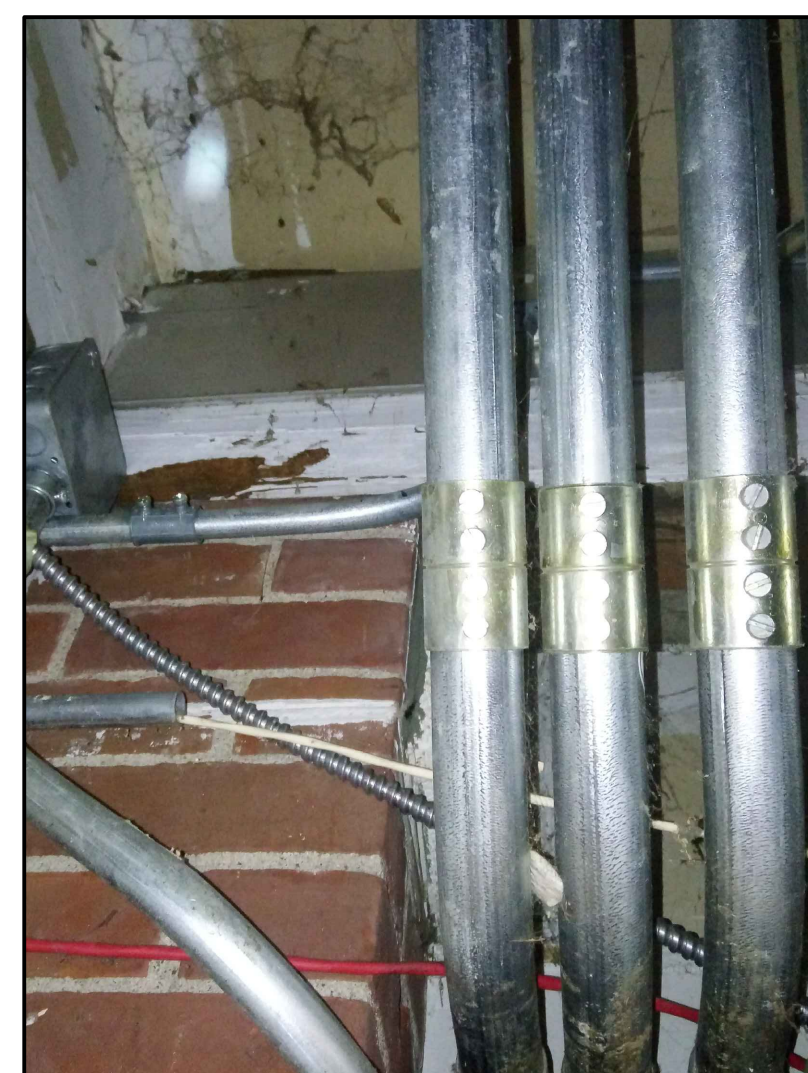


PHOTO C
PLENUM ABOVE EXISTING CONNECTOR CEILING SHOWING CURRENTLY CONCEALED ROOF FASCIA, EXTERIOR MASONRY, AND UTILITIES PASSING FROM MAIN BUILDING INTO PORTABLE CLASSROOM BUILDING

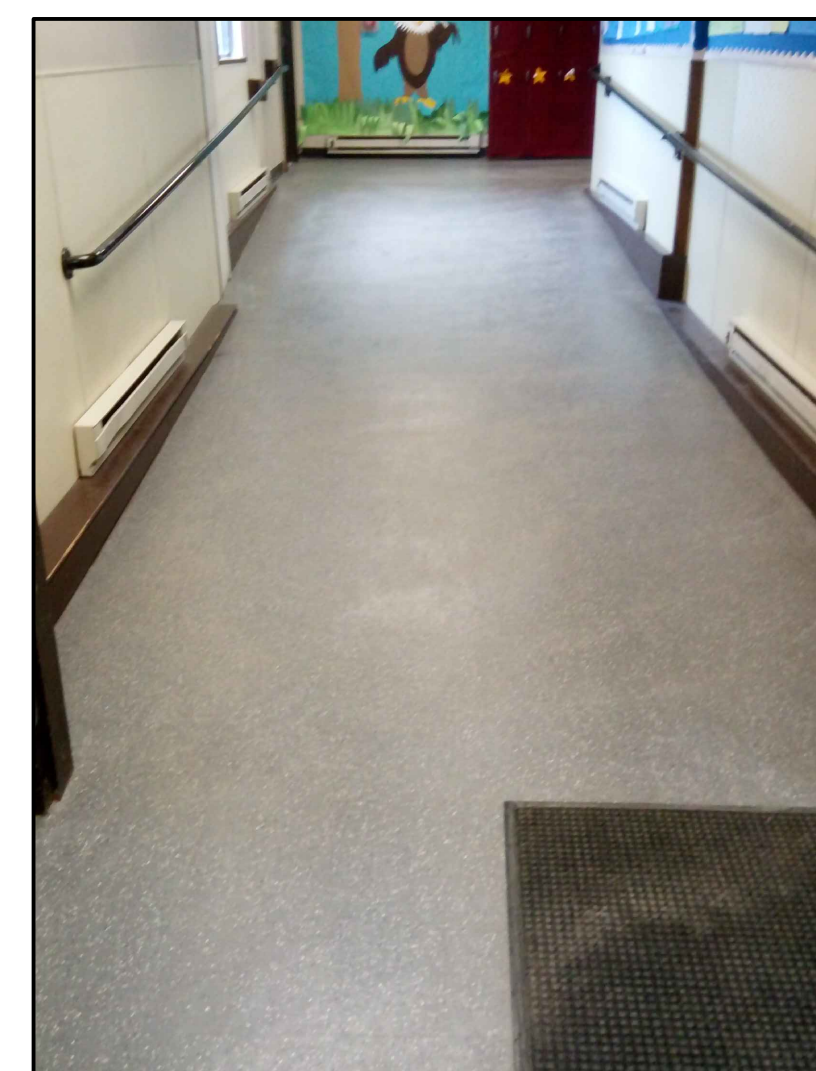


PHOTO D

SLAB ON GRADE TO RAISE FLOOR RAMP TRANSITION WITHIN PORTABLE CLASSROOM ADDITION (LOOKING AWAY FROM MAIN BUILDING INTO PORTABLE CLASSROOM BUILDING)



PHOTO E

PORTABLE CLASSROOM ADDITION TO EXISTING MAIN BUILDING - FASCIA AND ALL MASONRY NEWLY RE-EXPOSED TO THE OUTDOORS SHALL BE RESTORED TO MATCH ADJACENT EXISTING EXTERIOR MATERIALS



PHOTO F

SIMILAR EXAMPLE OF RECESSED ENTRY WITH STOREFRONT SYSTEM - ALTERNATE PORTION OF MAIN BUILDING

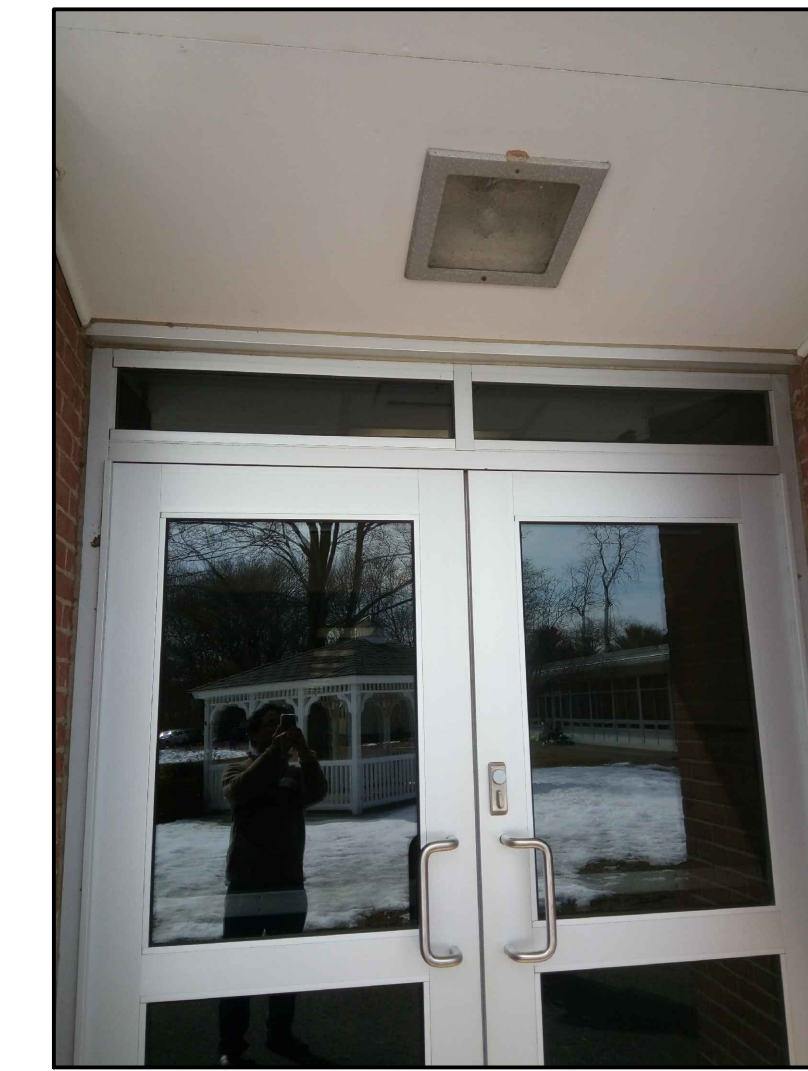
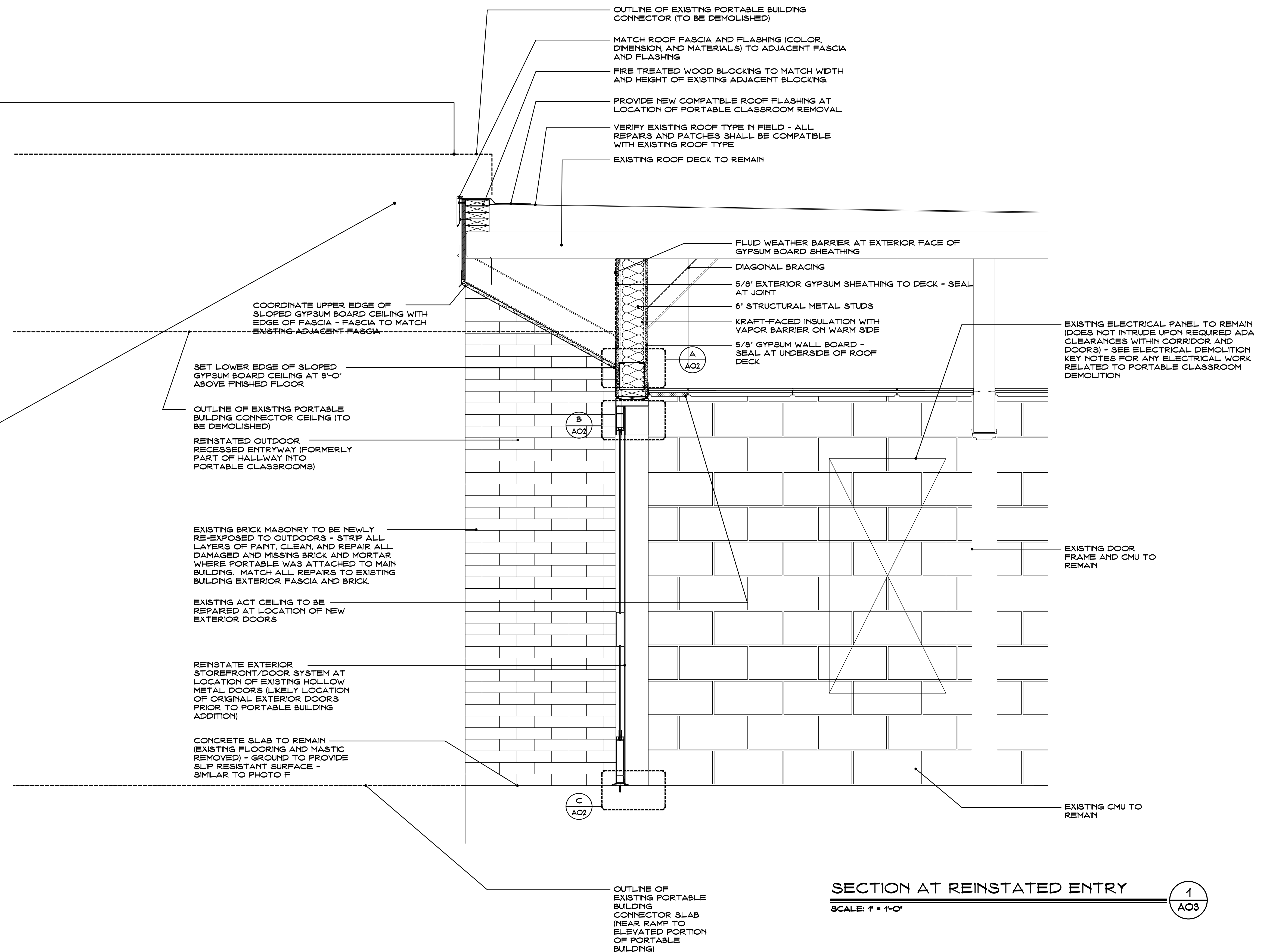
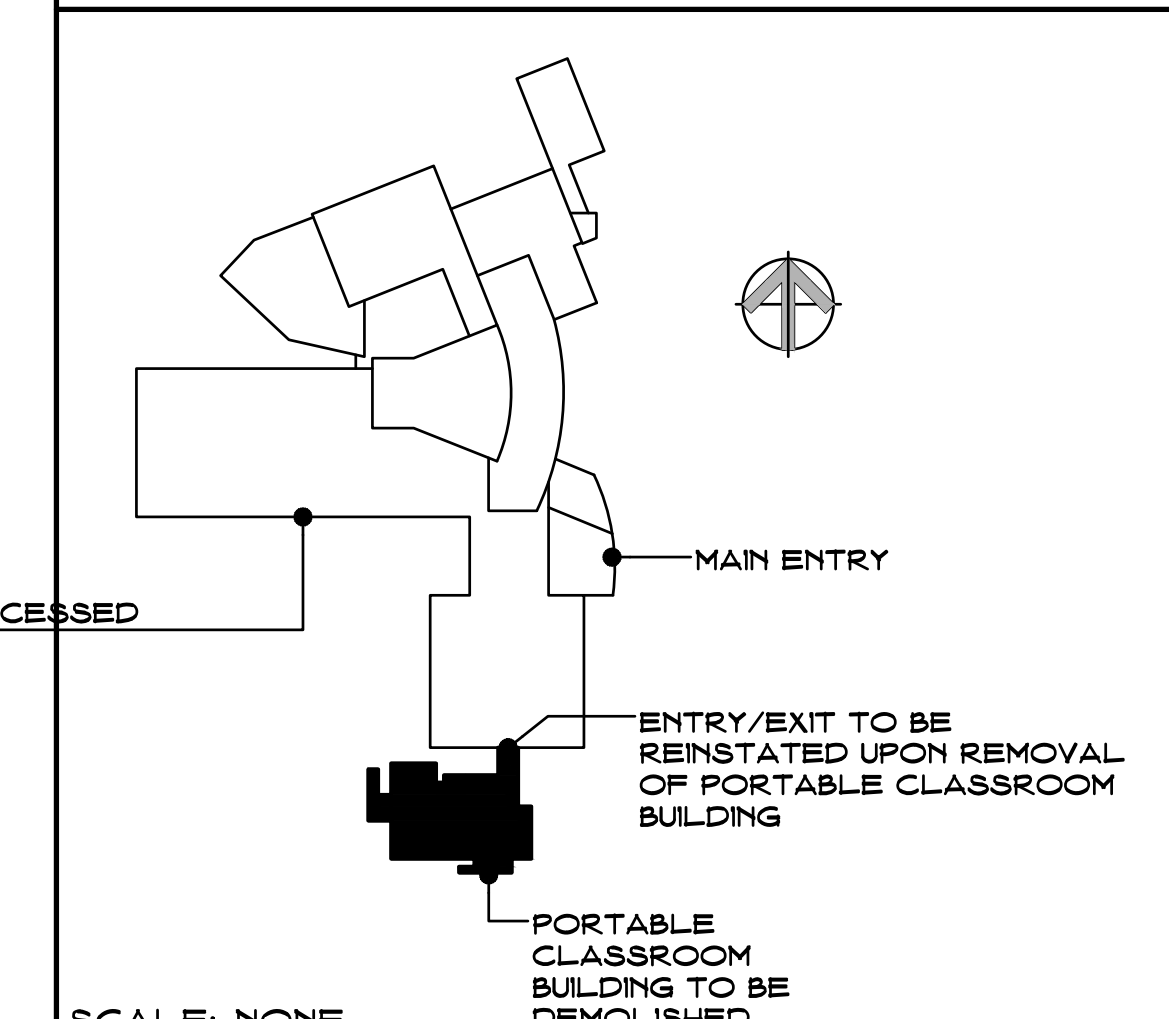


PHOTO G

SIMILAR EXAMPLE OF RECESSED ENTRY WITH STOREFRONT SYSTEM - ALTERNATE PORTION OF MAIN BUILDING



KEY PLAN - WOLCOTT



Revision	Description	Date	Revised By