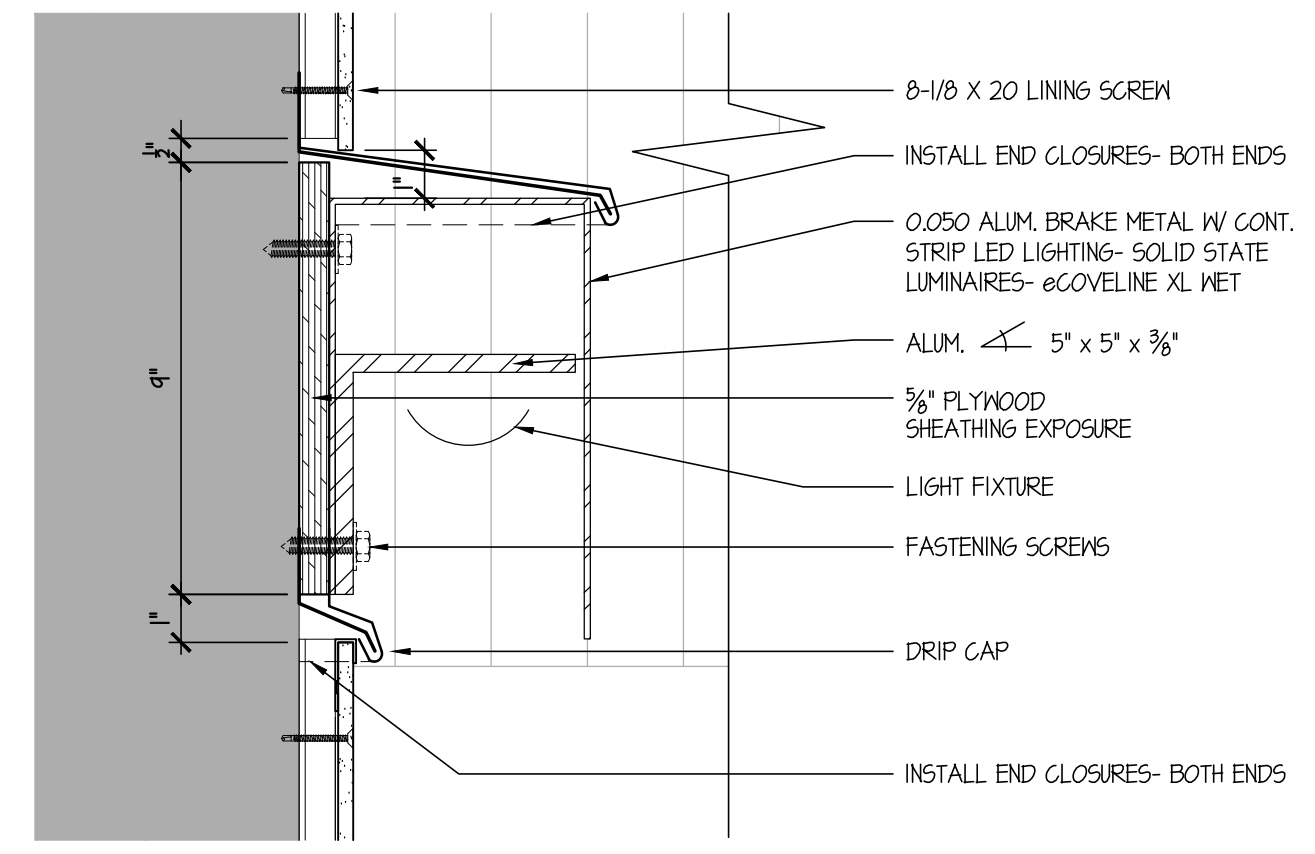


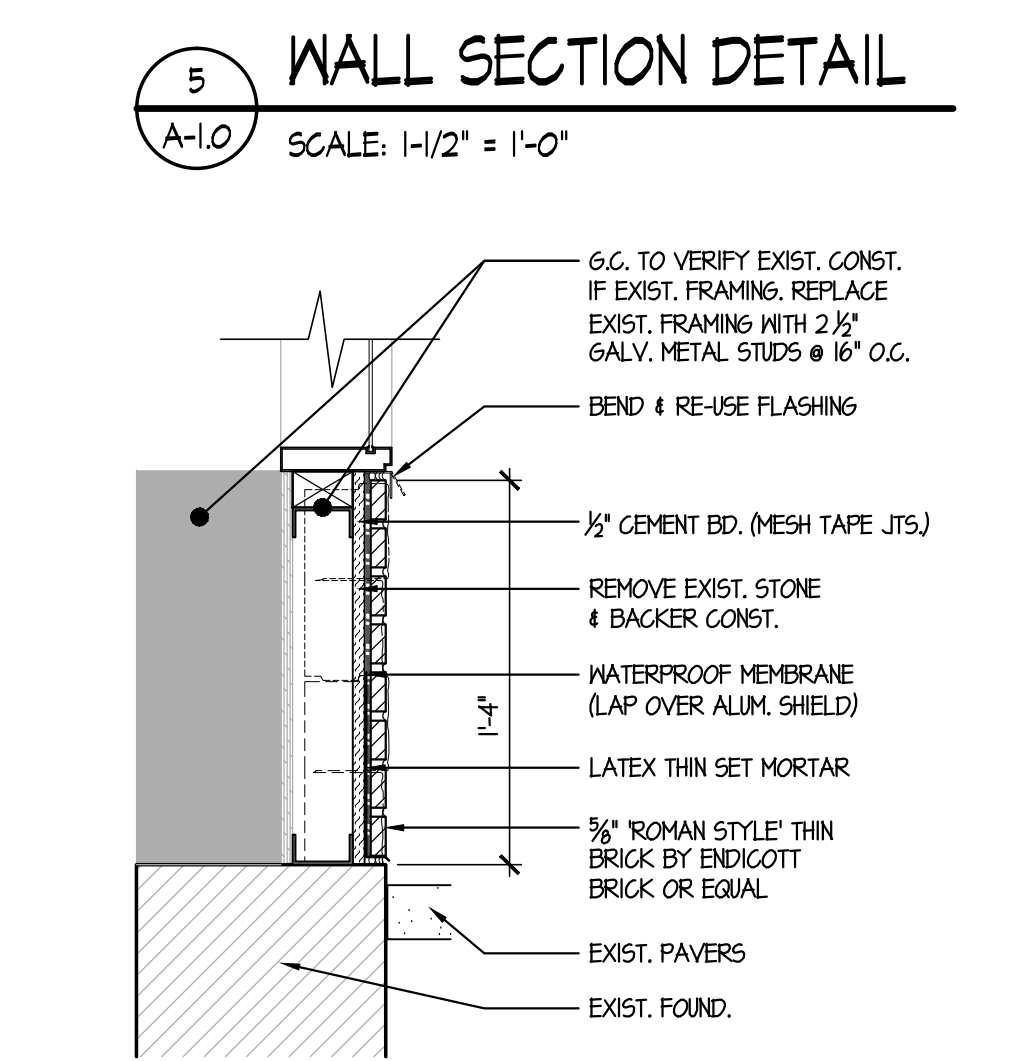
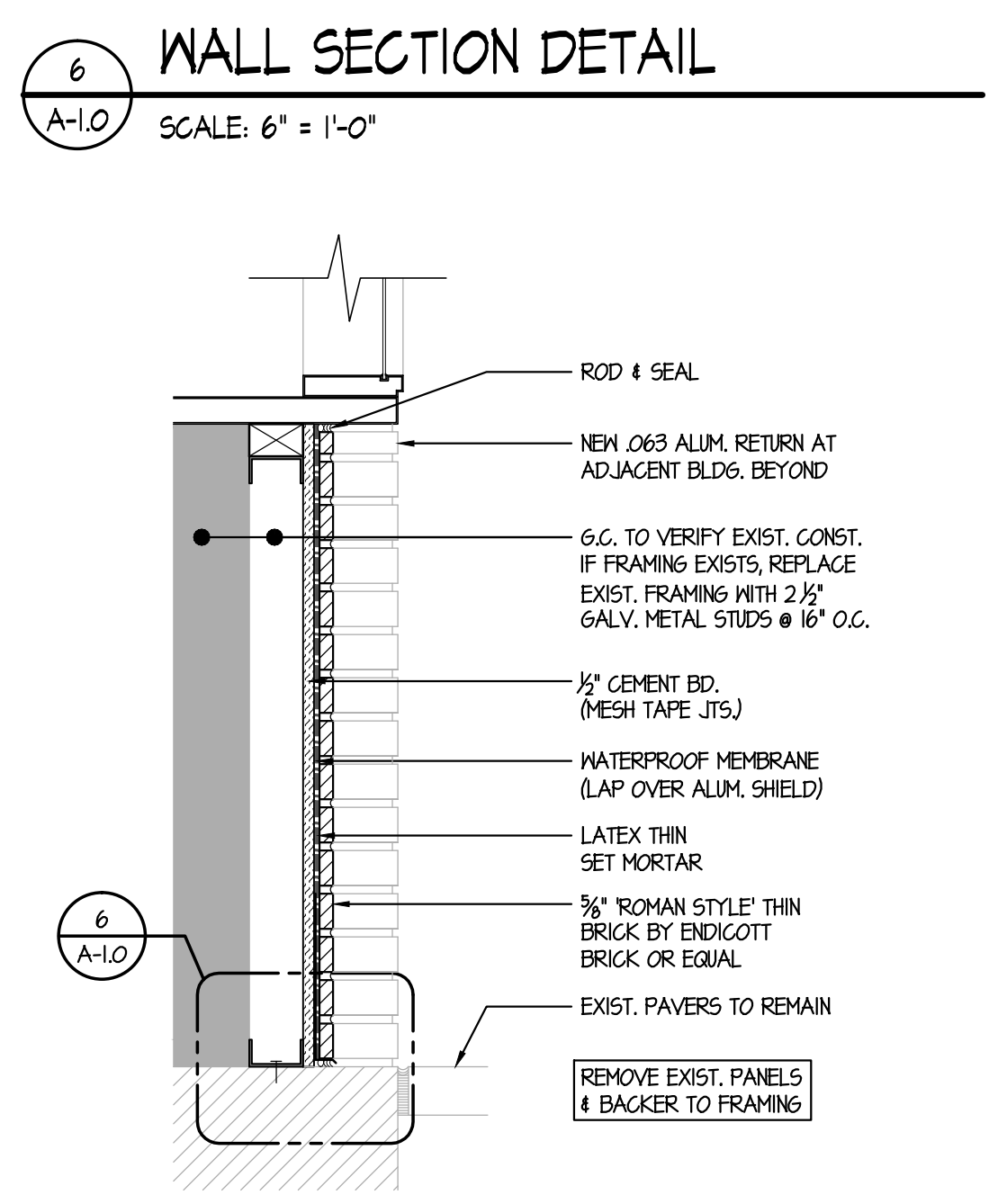
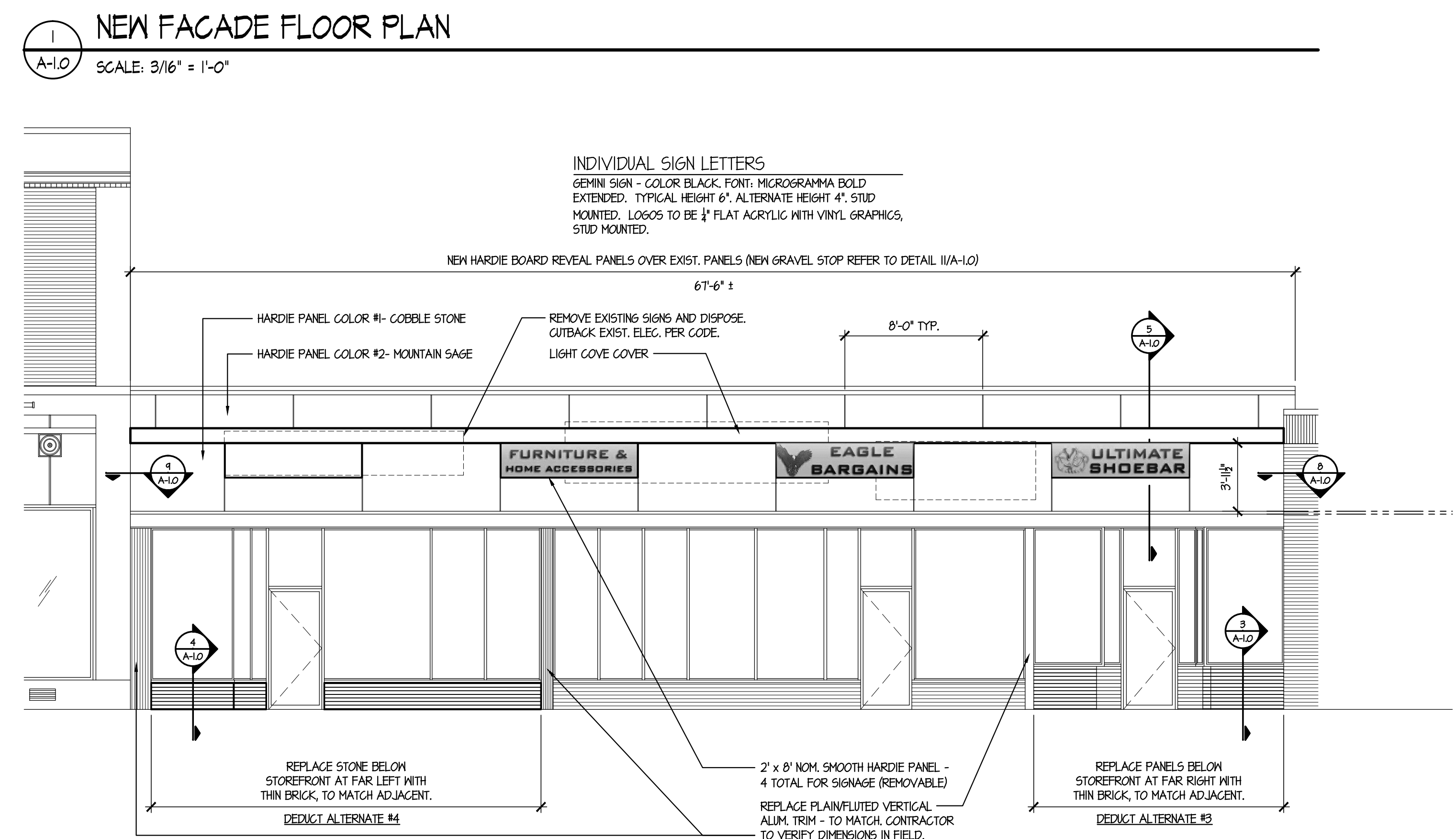
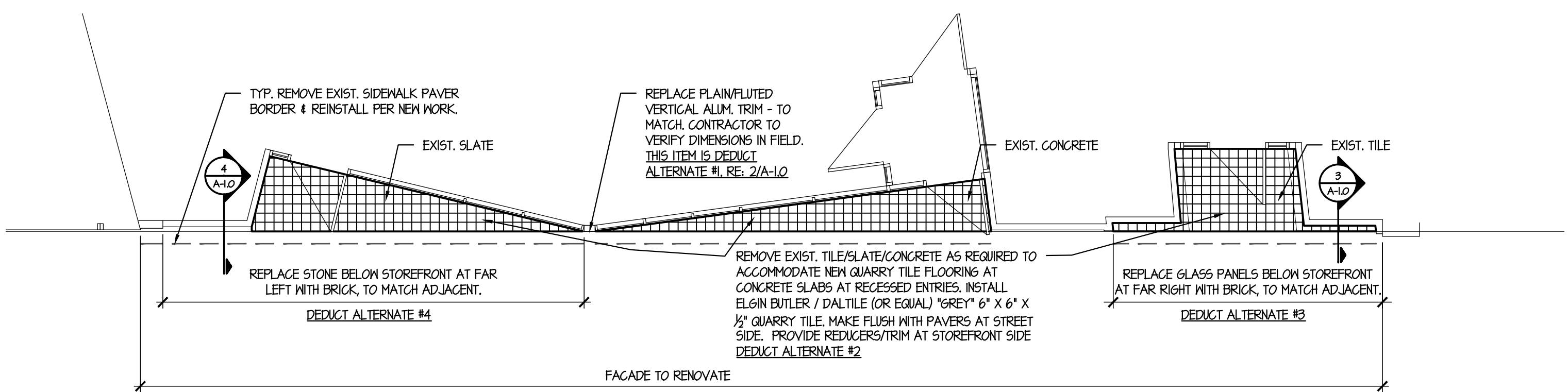
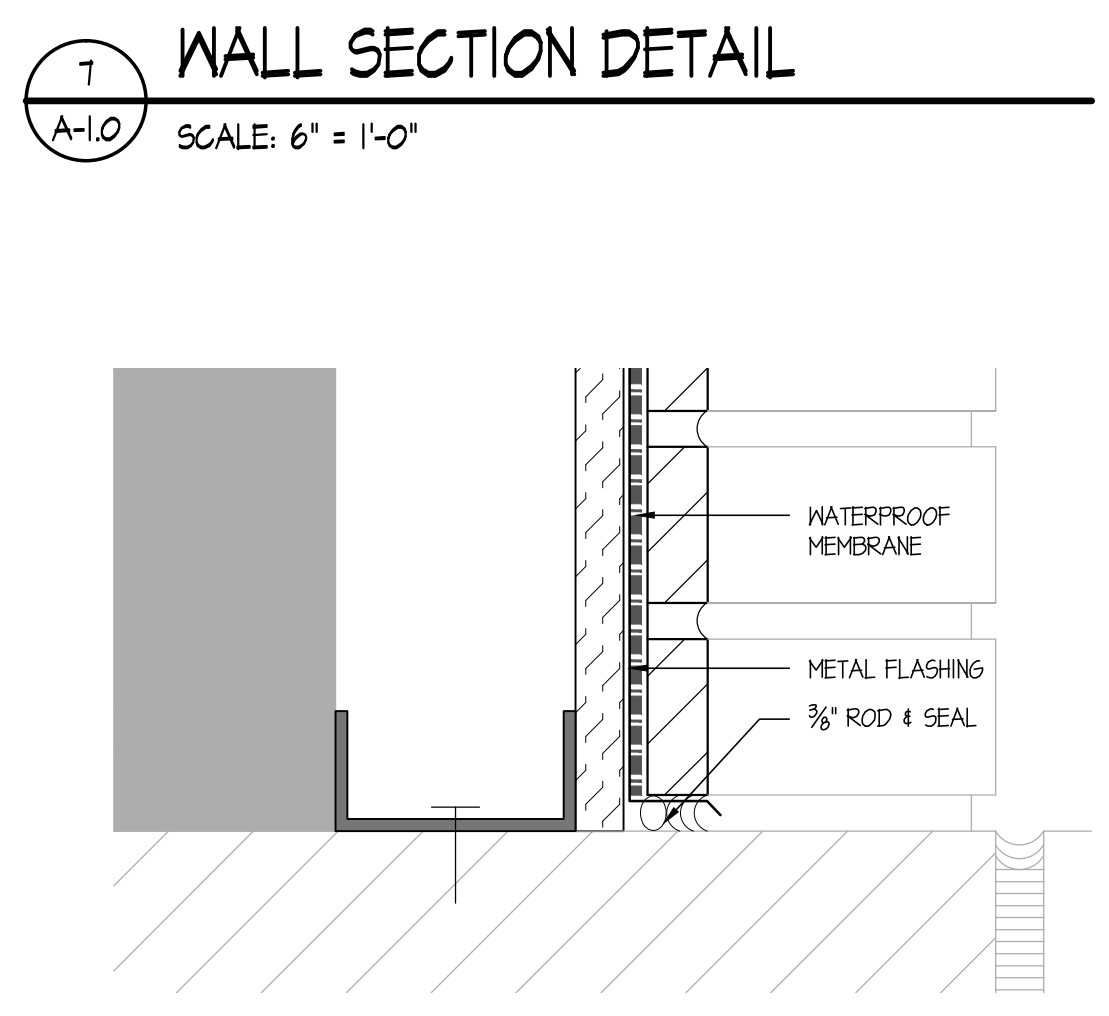
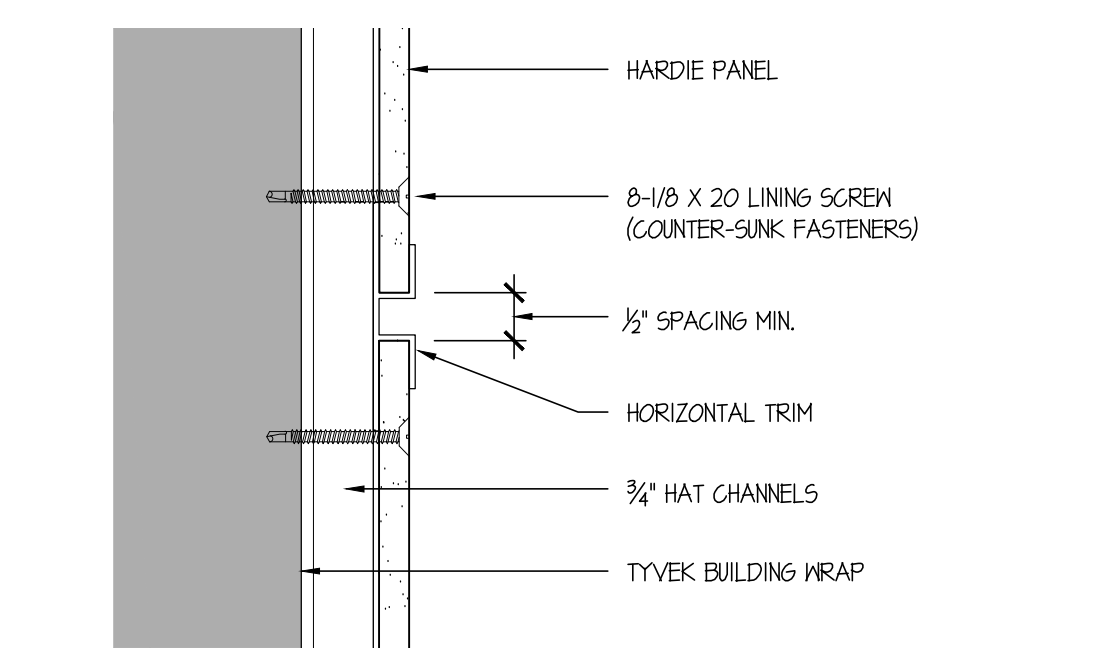
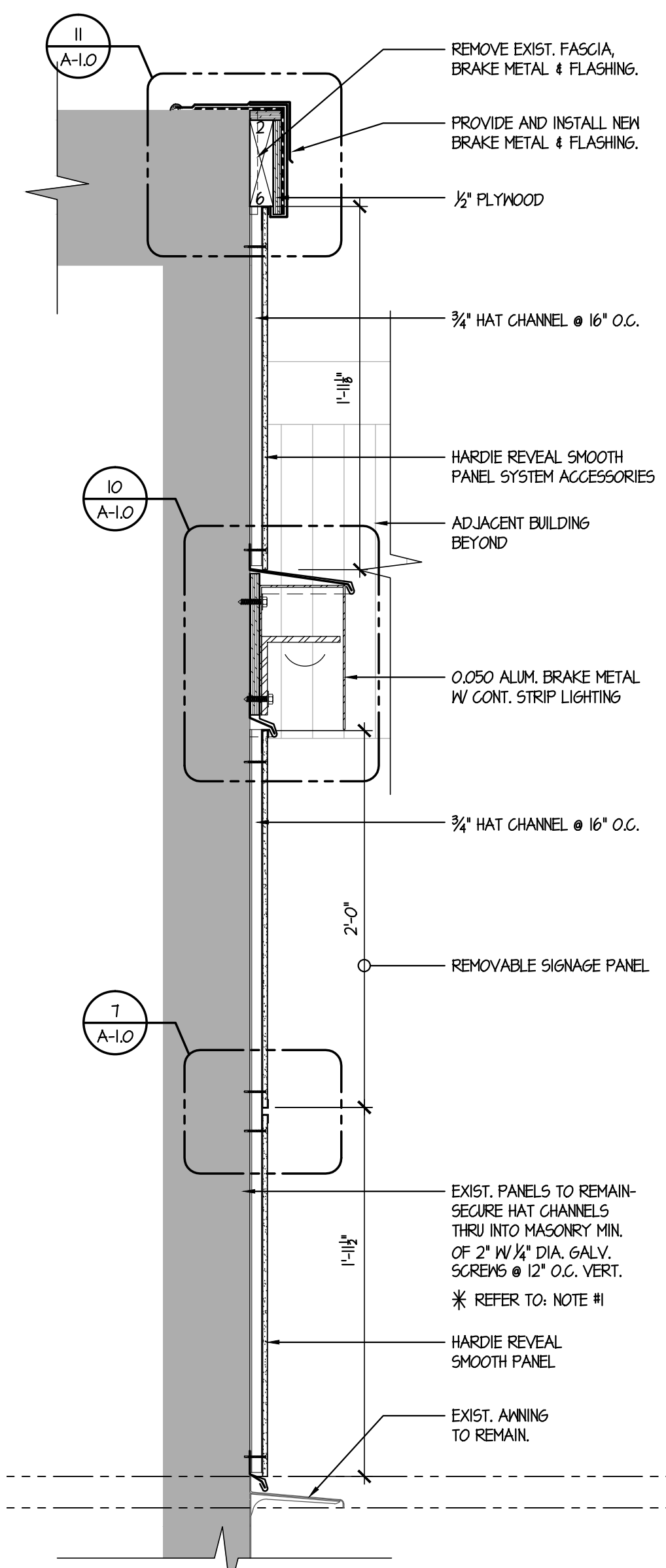
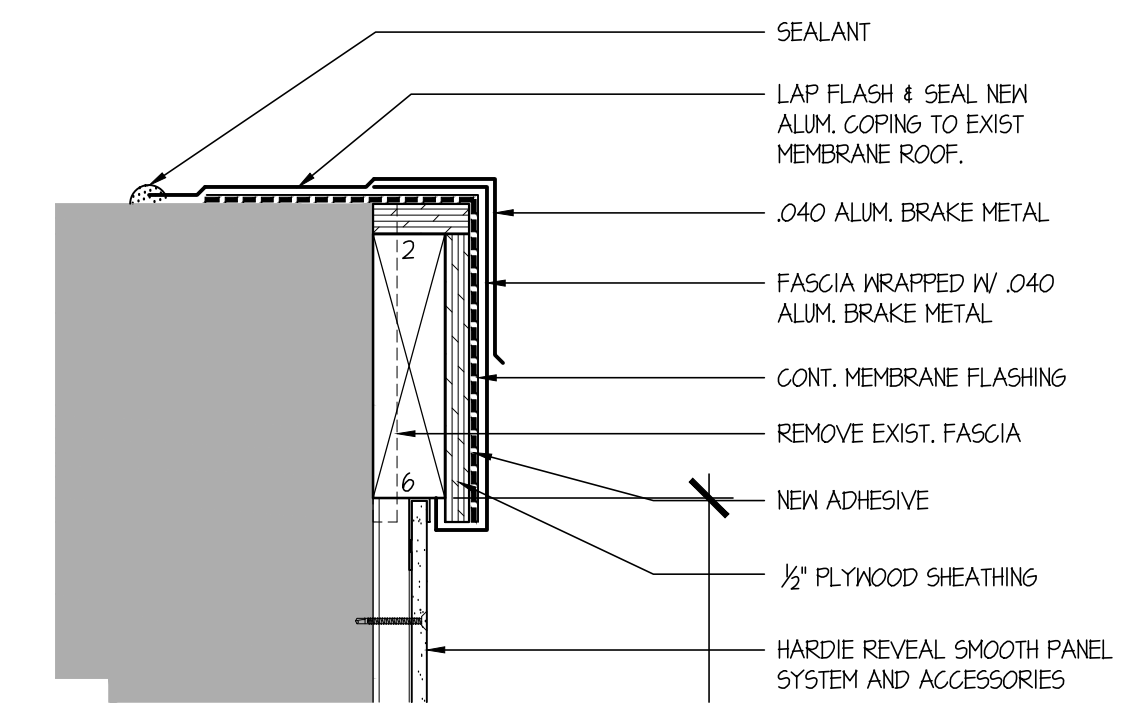
NOTES

- * G.C. VERIFY COMPONENTS OF EXIST. STRUCTURE & USE APPROPRIATE FASTENERS FOR SUCH TO BE APPROVED BY ARCHITECT.
- LED LIGHTING SYSTEM - JESCO LIGHTING GROUP - DL-AG-FLEX 30 INFINA AC FLEX 3000K, INFINA LED TAPE ATTACHED TO DL-AG-FLEX 8" (1 4) MOUNTING CHANNELS WITH 1" CLIPS AND END CAPS AS REQUIRED.
- CONNECT NEW LIGHTING TO EXISTING SIGN CIRCUIT.



SCOPE OF WORK

- NEW SIGNAGE; REMOVABLE HARDIE PANELS - 4 TOTAL (65 SF TOTAL MAX) (2' H X 8' L = 16 SF X 4 PANELS = 64 SF).
- NEW HARDIE BOARD REVEAL PANELS OVER EXIST. PANELS
- REPLACE PLAINFLUTED VERTICAL ALUM. TRIM (3 IN TOTAL) - TO MATCH. CONTRACTOR TO VERIFY DIMENSIONS IN FIELD. THIS ITEM IS DEDUCT ALTERNATE #1.
- NEW FLOORING AT CONCRETE SLABS AT RECESSED ENTRIES. THIS ITEM IS DEDUCT ALTERNATE #2.
- REPLACE PANELS BELOW STOREFRONT AT FAR RIGHT WITH THIN BRICK, TO MATCH ADJACENT. THIS ITEM IS DEDUCT ALTERNATE #3.
- REPLACE STONE BELOW STOREFRONT AT FAR LEFT WITH THIN BRICK, TO MATCH ADJACENT. THIS ITEM IS DEDUCT ALTERNATE #4.



Facade Renovations to 990-998 MAIN STREET East Hartford, Connecticut

date	description	no.

FLOOR PLAN, ELEVATION, SECTIONS & DETAILS

A-1.0

date	14 MAR 2019
drawn	DP
scale	AS NOTED
checked	DH; PM
project no.	18-46