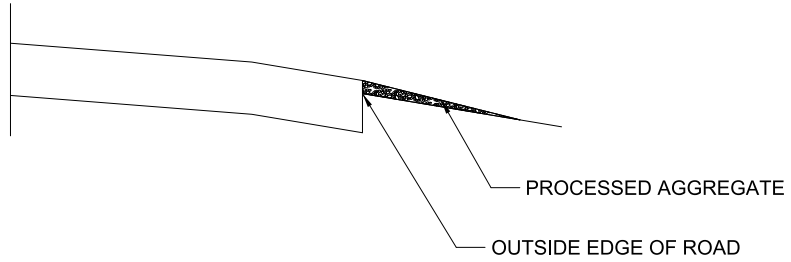


**GENERAL NOTES:**

1. PLACE AND COMPACT PROCESSED AGGREGATE IN ANY RUTTED OR ERODED AREAS ON THE OUTSIDE SHOULDER.

**EDGE OF ROAD  
RUTTED/ERODED TREATMENT**



**GENERAL NOTES:**

1. PLACE AND COMPACT PROCESSED AGGREGATE AT OUTSIDE EDGE OF ROAD TO ELIMINATE SHOULDER DROP-OFF.

**EDGE OF ROAD  
SHOULDER DROP-OFF TREATMENT**

**MDS-01**

STATE PROJECT NO.:

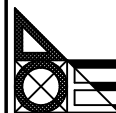
CITY/TOWN: VARIOUS CITIES/TOWNS



STATE OF CONNECTICUT  
DEPARTMENT OF TRANSPORTATION

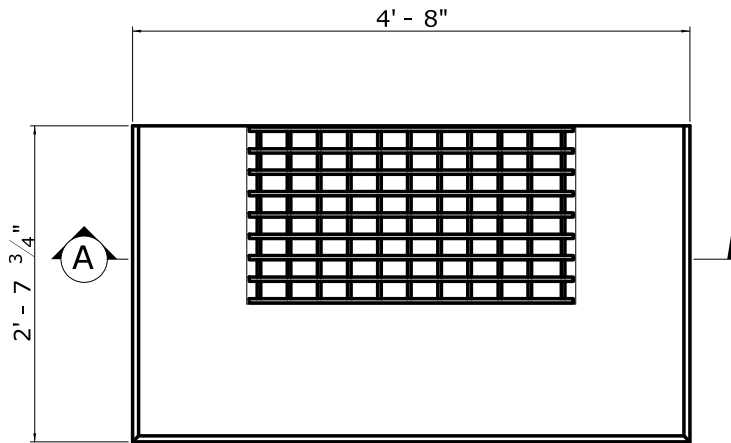


OFFICE OF  
ENGINEERING

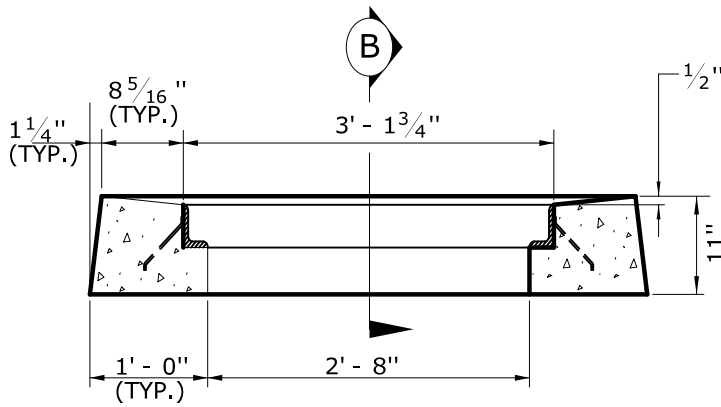


DATE:

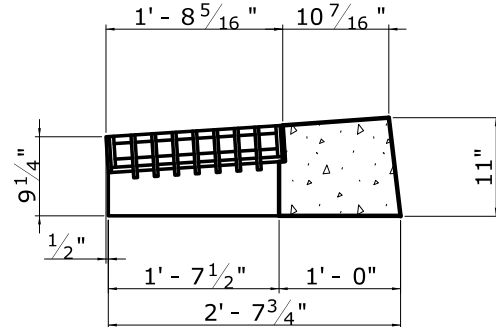
OCT 2017



**PLAN VIEW**



**SECTION A**



**SECTION B**

**GENERAL NOTES:**

1. FOR DETAILS OF FRAME AND GRATE SEE STANDARD SHEET HW-507-08.
2. ALL STEEL, EXCEPT REINFORCING BARS, SHALL BE GALVANIZED IN CONFORMANCE WITH SECTION M06.03 OF CONNECTICUT'S STANDARD SPECIFICATIONS.
3. ALL BARS SHALL HAVE A MINIMUM 2" (51) COVER.

**TYPE "C-M" BARRIER  
CURB CATCH BASIN TOP**

**MDS-02**

STATE PROJECT NO.:

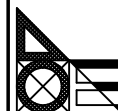
CITY/TOWN: VARIOUS CITIES/TOWNS



STATE OF CONNECTICUT  
DEPARTMENT OF TRANSPORTATION



OFFICE OF  
ENGINEERING



DATE:

OCT 2017