

ADA IMPROVEMENTS – PHASE 1

**KILLINGLY CENTRAL SCHOOL
22 SOAP STREET
DAYVILLE, CT 06241
STATE PROJECT NO. 069-0067 CV**

S/P+A PROJECT NO. 17.183b

DATE: October 18, 2018

The following changes to the Drawings and Project Specifications shall become a part of the Drawings and Project Specifications; superseding previously issued Drawings and Project Specifications to the extent modified by Addendum No. 2.

General Information:

- The deadline for RFIs has been extended to Thursday, October 25, 2018.
- See attached RFIs. (4)

Changes to the Specifications:

- SECTION 011000, SUMMARY OF WORK, Page 3, Article 1.5.E., add the following:
 - “3. Construction activities are not permitted during school hours of operation. Awarded contractor is not required to work second shift, weekends, school holidays or vacations however the option is available to expedite portions of the Work leading up to Summer 2019 when the building will be made fully available for construction activities. All work during these time periods must be coordinated with the District.” *(Per Owner/Internal Review)*

Changes to the Drawings:

- DRAWING A410, ENLARGED SINK PLANS, ELEVATIONS & DETAILS, Bookcases at Windows Detail @ Classroom D and Wardrobe Detail @ Classroom E, revise “shelf standards” to read “shelf rests”. *(Per Internal Review)*
- DRAWING A411, ENLARGED SINK PLANS, ELEVATIONS & DETAILS, Detail @ Bookcase in Front of Storefront A, revise “shelf standards” to read “shelf rests”. *(Per Internal Review)*
- DRAWING A412, CASEWORK DETAILS, Upper Cab. Det. A and B, revise “shelf standards” to read “shelf rests”. *(Per RFI #002)*
- The following PLUMBING drawings have been deleted in their entirety. New drawings have been added and are attached as part of this addendum*. (3) *(Per RFI #001)*
 - P101 FIRST FLOOR PLAN PLUMBING
 - P102 SECOND FLOOR PLAN PLUMBING
 - P901 PLUMBING SCHEDULES

The bid date is extended to Thursday, November 1, 2018 at 2:00pm by this addendum.

The addendum consists of six (6) pages of 8½” x 11” text and three (3) 30” x 42” drawings*.

End of Addendum ‘2’

Rebecca Bouchard

From: Rebecca Bouchard
Sent: Thursday, October 18, 2018 11:07 AM
To: 'jsygrove@sarazin.com'
Cc: 'rgalvin@sarazin.com'
Subject: RE: Killingly Schools ADA Improvements - RFIs

Good afternoon Jonathan.
 Responses to your questions are in red below.
 Thank you and good luck.

Rebecca Bouchard, CSI, CDT
Specifications Writer



SILVER/PETRUCELLI+ASSOCIATES
Architects / Engineers / Interior Designers

3190 Whitney Avenue Bldg 2 | Hamden, CT 06518 | silverpetrucci.com | P: [203.230.9007 x202](tel:203.230.9007) | F: [203.230.8247](tel:203.230.8247)

From: Jonathan Sygrove <jsygrove@sarazin.com>
Sent: Friday, October 12, 2018 3:28 PM
To: Paul Jorgensen <pjorgensen@silverpetrucci.com>
Cc: Ray Galvin <rgalvin@sarazin.com>
Subject: Killingly Schools ADA Improvements - RFIs
Importance: High

Paul,
 I have a few RFIs regarding these 2 schools:

BOTH SCHOOLS

1. If the contractor decided to perform work during the school year, will there be any associated cost for someone (custodian) to open/oversee/close the schools during off hours such as nights and/or weekends? **-There will be no associated cost.**
2. Both sets of drawings do not label the new fixtures on the plumbing drawings. There are multiple types of sinks and toilets therefore we do not know the quantities of each. The millwork drawings also call for a combination sink & drinking fountain which is not found in the fixture schedule. Are the sinks and drinking fountains in the millwork stainless steel or integral to the solid surface counter? Please advise. **-Plumbing drawings will be updated in forthcoming addendum. Sinks are to be stainless-steel.**

MEMORIAL SCHOOL

1. Details A & B/A410 show plastic laminate tops and Details C & H show solid surface. Please confirm all tops are solid surface. **-All tops are solid surface. Refer to Addendum #1 for revised Drawing.**
2. Detail C/A410 shows plastic laminate drawer boxes but 064116-4, para. 2.1G.2 & 3 call for hardwood drawer boxes. Which one is required? **-All drawer boxes are hardwood. Refer to Addendum #1 for revised Drawings.**
3. Detail G/A410 shows a grille. Please provide a description of what is desired? **-Perforated metal, square, carbon steel, hot-rolled pickled and oiled, mill finish, 12-gauge, ½-inch square on 11/16-inch straight centers, 3/16-inch bar width, 2.12 holes per square inch, minimum solid margins both sides of sheet parallel to length of sheet,**

holes sheared through both ends of sheet parallel to width of sheet, 53% open area. Custom size to fit, as indicated in the Drawings.

4. Detail F/A410 does not show any toe kick grilles. Please confirm none are required. -Provide toe kick grille (to match description above) along entire bookcase elevation 4/A410.
5. Elevations #3 & #4/A410 do not scale the same as the floor plan views. Do we use the elevations for floor plans for scaling the casework and tops?
-Elevations are dimensioned. End books cases may be extended or reduced to the nearest inch due to differences in field. Contractor to verify exact dimensions in field.
6. Detail 2/A410 shows a sink unit. Is this for the Community Room E58? -Yes.

Thank You,



SARAZIN

SARAZIN GENERAL CONTRACTORS, INC.

Jonathan Sygrove, Estimator / PM

6 Commerce Drive

North Windham, CT 06256

T-(860)456-4576 F-(860)456-8937

AA/EOE

Rebecca Bouchard

From: Rebecca Bouchard
Sent: Thursday, October 18, 2018 11:10 AM
To: 'jsygrove@sarazin.com'
Cc: 'rgalvin@sarazin.com'
Subject: RE: Killingly Schools ADA Improvements - RFIs #2

Good morning Jonathan.

Responses to your questions are in red below.

Thank you and good luck.

Rebecca Bouchard, CSI, CDT

Specifications Writer



SILVER/PETRUCELLI+ASSOCIATES
Architects / Engineers / Interior Designers

3190 Whitney Avenue Bldg 2 | Hamden, CT 06518 | silverpetrucelli.com | P: [203.230.9007 x202](tel:203.230.9007) | F: [203.230.8247](tel:203.230.8247)

From: Jonathan Sygrove <jsygrove@sarazin.com>
Sent: Monday, October 15, 2018 4:18 PM
To: Paul Jorgensen <pjorgensen@silverpetrucelli.com>
Cc: Ray Galvin <rgalvin@sarazin.com>
Subject: Killingly Schools ADA Improvements - RFIs #2
Importance: High

Paul,

I have a few RFIs regarding these 2 schools:

MEMORIAL SCHOOL

1. The specifications for the toilet compartments call for both metal & plastic but the drawings do not indicate which bathrooms are to receive which type of partition. Please advise. **-Boy's Toilet is plastic; Girl's Toilet is metal.**
2. The metal toilet compartment spec states to match existing. Can the brand and color of the existing compartments be provided? Depending on color selected, this may require custom color which is an upcharge over the standard/in-stock colors. Please advise. **-Manufacturer and color are unknown. Colors will be from manufacturer's standard range, closest to match existing.**

CENTRAL SCHOOL

1. Section D on A412 it shows plastic laminate tops with a Solid Surface backsplash. Is this correct and if so, we will need specifications for the plastic laminate countertops. **-Countertop is solid surface. Refer to Addendum #1.**
2. Section 064116-4, para. 2.1G specifies VGS laminate for the semi-exposed interiors. Is white Thermofused laminate (melamine) interiors acceptable? **-No, melamine is not acceptable.**
3. Section 064116.4, para. 2.2B.2 specifies Hardwood Plywood. Is high density 45lb particle board core acceptable for the casework construction? **-No, particleboard is not acceptable.**
4. Section 064116-5, para 2.3D it calls for metal Pin type shelf rests which requires pin holes in the cabinet sides. Sections A & B on A412 it shows shelf standards. Please confirm which type is required. If shelf standards are required, should they be surface or recessed mounted and materials required. **-Use shelf rests as specified.**

5. Section A on A411 shows salvaged grilles. Who owns the installation of these and are they refurbished and/or modified to fit the new casework by others?
-Contractor is responsible for salvaging and reinstalling into new casework. Grilles do not need to be refurbished however may need to be modified as required to fit.
6. The plastic toilet compartment specifications state to match existing make and model. Is the make and model of the existing toilet compartments known? Please advise. -Manufacturer and color are unknown. Colors will be from manufacturer's standard range, closest to match existing.

Thank You,



SARAZIN

SARAZIN GENERAL CONTRACTORS, INC.

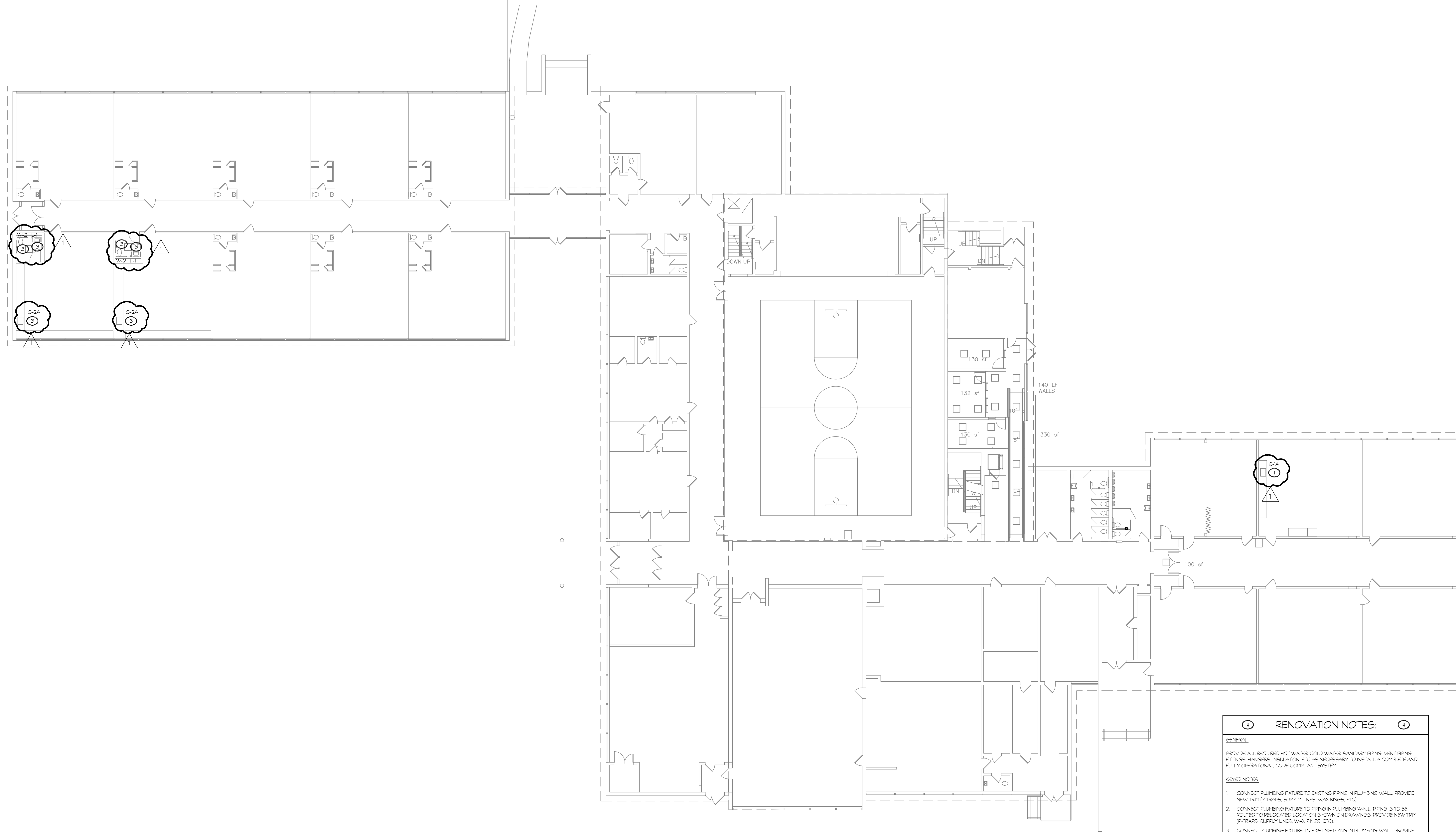
Jonathan Sygrove, Estimator / PM

6 Commerce Drive

North Windham, CT 06256

T-(860)456-4576 F-(860)456-8937

AA/EOE



RENOVATION NOTES:

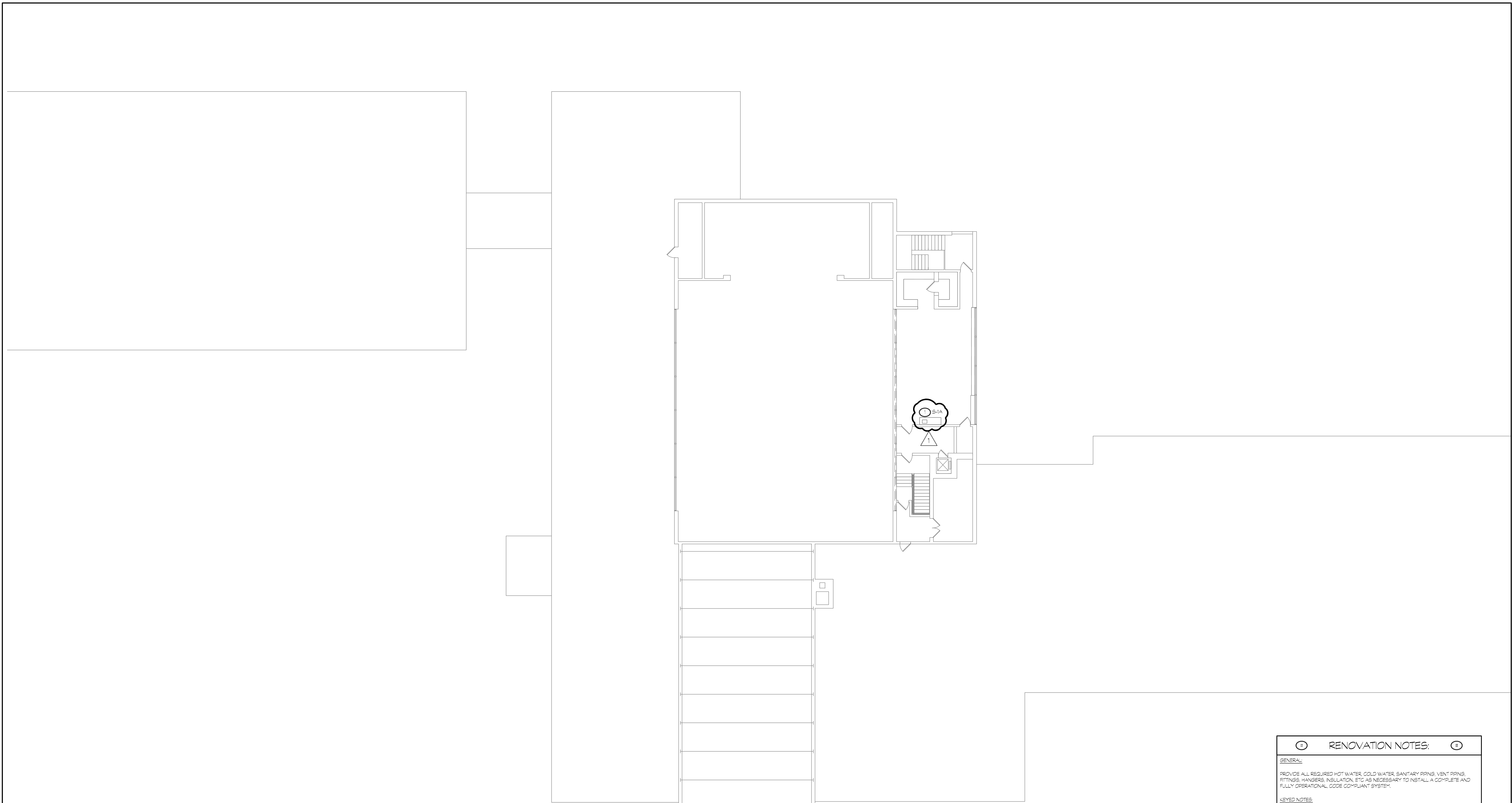
GENERAL:
 PROVIDE ALL REQUIRED HOT WATER, COLD WATER, SANITARY PIPING, VENT PIPING, FITTINGS, HANGERS, INSULATION, ETC. AS NECESSARY TO INSTALL A COMPLETE AND FULLY OPERATIONAL, CODE COMPLIANT SYSTEM.

KEYED NOTES:

1. CONNECT PLUMBING FIXTURE TO EXISTING PIPING IN PLUMBING WALL. PROVIDE NEW TRIM (P-TRAPS, SUPPLY LINES, WAX RINGS, ETC).
2. CONNECT PLUMBING FIXTURE TO PIPING IN PLUMBING WALL. PIPING IS TO BE ROUTED TO RELOCATED LOCATION SHOWN ON DRAWINGS. PROVIDE NEW TRIM (P-TRAPS, SUPPLY LINES, WAX RINGS, ETC).
3. CONNECT PLUMBING FIXTURE TO EXISTING PIPING IN PLUMBING WALL. PROVIDE NEW TRIM (P-TRAPS, SUPPLY LINES, WAX RINGS, ETC). PROVIDE NEW SENSOR FLUSH VALVE AS PER PLUMBING FIXTURE SCHEDULE.
4. CONNECT PLUMBING FIXTURE TO PIPING IN PLUMBING WALL. PIPING IS TO BE ROUTED TO RELOCATED LOCATION SHOWN ON DRAWINGS. PROVIDE NEW TRIM (P-TRAPS, SUPPLY LINES, WAX RINGS, ETC). PROVIDE NEW SENSOR FLUSH VALVE AS PER PLUMBING FIXTURE SCHEDULE.
5. - DELETED -
6. PROVIDE SURESSEAL (OR EQUIV.) IN FLOOR DRAIN TRAP SEALER FOR ALL FLOOR DRAINS. PROVIDE NEW FLOOR DRAIN COVERS, REFER TO PLUMBING SCHEDULE.
7. CONTRACTOR SHALL TEST THE WATER PRESSURE AT THE NEW LAVATOIRES AND PROVIDE A NEW PRV SO THE FIXTURES FALL IN THE ACCEPTABLE PRESSURE RANGE AS REQUIRED BY THE MANUFACTURER.
8. CONTRACTOR SHALL REPLACE ALL CLEAN OUT COVERS.



Revision:	Description:	Date:	Revised By:
1	ADDENDUM 2 REVISIONS	10/17/18	ARC

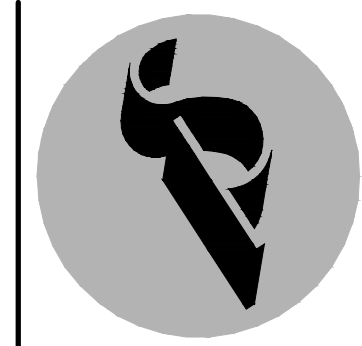


RENOVATION NOTES:

GENERAL:
 PROVIDE ALL REQUIRED HOT WATER, COLD WATER, SANITARY, PIPING, VENT PIPING, FITTINGS, HANGERS, INSULATION, ETC. AS NECESSARY TO INSTALL A COMPLETE AND FULLY OPERATIONAL, CODE COMPLIANT SYSTEM.

KEYED NOTES:

1. CONNECT PLUMBING FIXTURE TO EXISTING PIPING IN PLUMBING WALL. PROVIDE NEW TRIM (P-TRAPS, SUPPLY LINES, WAX RINGS, ETC).
2. CONNECT PLUMBING FIXTURE TO PIPING IN PLUMBING WALL. PIPING IS TO BE ROUTED TO RELOCATED LOCATION SHOWN ON DRAWINGS. PROVIDE NEW TRIM (P-TRAPS, SUPPLY LINES, WAX RINGS, ETC).
3. CONNECT PLUMBING FIXTURE TO EXISTING PIPING IN PLUMBING WALL. PROVIDE NEW TRIM (P-TRAPS, SUPPLY LINES, WAX RINGS, ETC). PROVIDE NEW SENSOR FLUSH VALVE AS PER PLUMBING FIXTURE SCHEDULE.
4. CONNECT PLUMBING FIXTURE TO PIPING IN PLUMBING WALL. PIPING IS TO BE ROUTED TO RELOCATED LOCATION SHOWN ON DRAWINGS. PROVIDE NEW TRIM (P-TRAPS, SUPPLY LINES, WAX RINGS, ETC). PROVIDE NEW SENSOR FLUSH VALVE AS PER PLUMBING FIXTURE SCHEDULE.
5. - DELETED -
6. PROVIDE SURESEAL (OR EQUIV.) IN FLOOR DRAIN TRAP SEALER FOR ALL FLOOR DRAINS. PROVIDE NEW FLOOR DRAIN COVERS. REFER TO PLUMBING SCHEDULE.
7. CONTRACTOR SHALL TEST THE WATER PRESSURE AT THE NEW LAVATOIRES AND PROVIDE A NEW PRV SO THE FIXTURES FALL IN THE ACCEPTABLE PRESSURE RANGE AS REQUIRED BY THE MANUFACTURER.
8. CONTRACTOR SHALL REPLACE ALL CLEAN OUT COVERS.



Revision	Description	Date	Revised By
1	ADDENDUM 2 REVISIONS	10/17/18	ARC

PLUMBING FIXTURE/EQUIPMENT SCHEDULE					
MARK	FIXTURE, MODEL NUMBER AND DESCRIPTION	ROUGH-IN			
		WASTE/SANITARY	VENT	OW	HW
W-1A	WATER CLOSET, FLOOR MOUNTED, ADA HEIGHT, SLOAN WETS 20201001-126, VITREOUS CHINA, ELONGATED BOWL, 1/2" TOP SPRAY, SIPHON, JET TOILET WITH WALL SUPPLY, SLOAN ROYAL 11-128 MANUAL FLUSH VALVE, CHURCH 295CT OPEN FRONT SEAT. PROVIDE ALL ITEMS REQUIRED FOR COMPLETE INSTALLATION.	4"	2"	1"	--
W-2	WATER CLOSET, CHILD HEIGHT, FLOOR MOUNTED, AMERICAN STANDARD BABY DIVORCE FLOWWISE 2282-001, VITREOUS CHINA, ELONGATED BOWL, 1/2" TOP SPRAY, SIPHON, JET TOILET WITH WALL SUPPLY, SLOAN ROYAL 11-128 CONCEALED FLUSH VALVE, AMERICAN STANDARD 5003-055 OPEN FRONT SEAT. PROVIDE ALL ITEMS REQUIRED FOR COMPLETE INSTALLATION. (REFER TO NOTE 10 FOR OFFSET FLANGES)	4"	2"	1"	--
U-1	URINAL, WALL HUNG, SLOAN WELS 10001001-0125, VITREOUS CHINA 3/4" INLET SPRAY WALL SUPPLY WASHOUT URINAL WITH FULLY ENCLOSED P-TRAP, SLOAN ROYAL 186-0125 MANUAL FLUSH VALVE. PROVIDE ALL ITEMS REQUIRED FOR COMPLETE INSTALLATION.	2"	2"	3/4"	--
U-1A	URINAL, WALL HUNG, ADA HEIGHT, SLOAN WELS 10001001-0125, VITREOUS CHINA 3/4" INLET SPRAY WALL SUPPLY WASHOUT URINAL WITH FULLY ENCLOSED P-TRAP, SLOAN ROYAL 186-0125 MANUAL FLUSH VALVE. PROVIDE ALL ITEMS REQUIRED FOR COMPLETE INSTALLATION.	2"	2"	3/4"	--
L-1	LAVATORY, WALL HUNG, SLOAN 86-3003 VITREOUS CHINA WALL MOUNT LAVATORY, MOEN M-5100N TWO HANDLE FAUCET MODEL 8800FOS, 0.8 GPM, 1/2" CHROME PLATED CAST BRASS P-TRAP, SUPPLIES BRASS ANGLE STOPS WITH LOOSE KEY OPERATION, GRID DRAIN, ABS 1070-THV AND ALL OTHER ITEMS REQUIRED FOR COMPLETE INSTALLATION. COORDINATE MOUNTING HEIGHTS WITH ARCHITECT PRIOR TO INSTALLATION.	2"	1/2"	1/2"	1/2"
L-1A	LAVATORY, WALL HUNG, ADA HEIGHT, SLOAN 86-3003 VITREOUS CHINA WALL MOUNT LAVATORY, MOEN M-5100N TWO HANDLE FAUCET MODEL 8800FOS, 0.8 GPM, 1/2" CHROME PLATED CAST BRASS P-TRAP, SUPPLIES BRASS ANGLE STOPS WITH LOOSE KEY OPERATION, GRID DRAIN, ABS 1070-THV AND ALL OTHER ITEMS REQUIRED FOR COMPLETE INSTALLATION. COORDINATE MOUNTING HEIGHTS WITH ARCHITECT PRIOR TO INSTALLATION.	2"	1/2"	1/2"	1/2"
S-1A	SINGLE BOWL SINK, ADA COMPLIANT, ELKAY LR40-229 LUBBERSTONE STAINLESS STEEL, SINGLE BOWL, SELF-RIMMING SINK, 8" BOWL DEPTH, DRAIN TO BE OFFSET TO REAR, DELUXE STRAINER MODEL LX-89, PROVIDE AMERICAN STANDARD MONTEREY 614.30" SWIVEL GOOSENECK FAUCET WITH SINGLE LEVER AND SPRAYER, PROVIDE TRAP, SUPPLIES, STOPS, ETC FOR COMPLETE INSTALLATION.	2"	1/2"	1/2"	1/2"
S-2A	CLASSROOM SINK WITH DRINKING FOUNTAIN, ADA COMPLIANT, ELKAY DRK403775E(L,R) FOR RIGHT OR LEFT HAND USE, PROVIDE WITH 8" BOWL DEPTH AND DRAIN OFFSET TO REAR, PROVIDE WITH SWING SPOUT FAUCET WITH WREST BLADES, MODEL LX24899C AND REMOTE CONTROLLED FLUSHING VALVE MODEL LX4014A, PUSH-BUTTON SHALL BE LOCATED IN FRONT FACE OF COUNTER IN ACCESSIBLE LOCATION. PROVIDE TRAP, SUPPLIES, STOPS, ETC FOR COMPLETE INSTALLATION.	2"	1/2"	1/2"	1/2"

NOTES:
1. LAVATORY SUPPLY SHALL BE BRASS W/ BRASS ANGLE STOPS FOR 1/2" WATER SUPPLY LINES, W/ LOOSE KEY (W/CAP), AND WALL FLANGE. ALL COMPONENTS SHALL BE POLISHED CHROME FINISH, MANUFACTURER BRASS CRAFT OR APPROVED EQUAL.
2. CAST BODY P-TRAP 1 1/2" x 1/2" WITH HEAVY CAST U-BEND & FLAT CLEANOUT PLUG, SUP NUTS AND WALL FLANGE. ALL COMPONENTS SHALL BE POLISHED CHROME FINISH, MANUFACTURER BRASS CRAFT OR APPROVED EQUAL.
3. STRAINERS SHALL BE FURNISHED WITH FIXTURES AS REQUIRED. FOR 1/2" LAVATORY OR SINKS PROVIDE OFFSET TAILPIECE.
4. PROVIDE TRUEBRO MODEL 103 (WHITE), ANTIMICROBIAL HANDI LAV-GUARDS INSTALLATION KIT FOR ALL WHEELCHAIR LAVATORY & SINKS FOR WATER SUPPLIES & WASTE LINE.
5. THE PLUMBING FIXTURES VENDOR SHALL COORDINATE WITH THE PLUMBING AND GENERAL CONTRACTOR ALL PLUMBING FIXTURES ROUGH IN DIMENSIONS BEFORE CONSTRUCTION BEGINS.
6. UNLESS SHOWN ABOVE, PLUMBING FIXTURES MANUFACTURER TRIM COLOR AND FINISH SHALL BE FURNISHED AS DIRECTED BY OWNER/ARCHITECT.
7. REFER TO ARCHITECTURAL DRAWINGS FOR STANDARD, ADA MOUNTING AND CHILD HEIGHTS.
8. CONTRACTOR TO PROVIDE AN EXTRA 10% OF BATTERIES, AERATORS, CARTRIDGE, ETC.



PIPE HANGER SPACING TABLE			
PIPE MATERIAL	PIPE SIZES (INCHES)	HORIZONTAL PIPE MAX HANGER DISTANCE (FT)	VERTICAL PIPE MAX HANGER DISTANCE (FEET)
COPPER & COPPER ALLOY TUBING	1/2" & SMALLER	6'-0"	10'-0"
COPPER & COPPER ALLOY TUBING	1/2" & LARGER	10'-0"	10'-0"
COPPER & COPPER ALLOY PIPE	ALL	12'-0"	10'-0"
CAST IRON PIPE	ALL	5'-0"	15'-0"
STEEL PIPE	ALL	12'-0"	15'-0"
STAINLESS STEEL DRAINAGE	ALL	10'-0"	10'-0"
CPVC PIPE OR TUBING	1" & SMALLER	3'-0"	10'-0"
CPVC PIPE OR TUBING	1 1/2" & LARGER	4'-0"	10'-0"
PVC PIPE	ALL	4'-0"	10'-0"

NOTES:
* MAXIMUM HORIZONTAL SPACING OF CAST IRON PIPE HANGERS SHALL BE INCREASED TO 10'-0" WHERE 10'-0" LENGTHS OF PIPE ARE USED
** MOSTLY GUIDE FOR SIZES 2" AND SMALLER
NOT ALL PIPE MATERIALS ON THIS TABLE WILL PERTAIN TO THIS PROJECT

PIPE AND FITTING SCHEDULE						
DESCRIPTION	SIZE	PIPE		FITTING		REMARKS
		TYPE	SCHEDULE	TYPE	RATING	
SOL. WASTE AND VENT ABOVE GROUND	ALL	CHH / PVC	SV / 40	C / PVC	SV / 40	4 BAND FOR 4" AND SMALLER 6 BAND FOR LARGER THAN 4"
SOL. WASTE AND VENT BELOW GROUND	ALL	CHHS / PVC	SV / 40	C / PVC	SV / 40	--
DOMESTIC WATER WITHIN BUILDING	ALL	COPPER	TYPE L	CUS	STD	HARD TEMPERED
TRAP PRIMER PIPING	ALL	PEX	--	--	--	NO JOINTS ALLOWED BELOW SLAB

NOTES:
1. TRANSITION COUPLINGS AND NO-HUB PIPE SHALL NOT BE INSTALLED BELOW SLAB OR IN ANY BURIED CONDITIONS IN CONTACT WITH EARTH
2. ALL PIPING IN RETURN AIR CEILING PLENUM INSTALLATIONS SHALL BE UL LISTED FOR THIS APPLICATION
3. MECHANICAL JOINTS ARE ALLOWED FOR SERVICE, PURPOSED ONLY IN WALLS AND CEILINGS BUT MUST BE READILY ACCESSIBLE. 25-50 PVC IS UL LISTED FOR RETURN AIR CEILING PLENUM INSTALLATIONS
4. FOR ITEMS INSTALLED IN PLENUM RATED CEILING, MATERIALS SHALL COMPLY WITH ASTM E 84 WITH FLAME-SPREAD INDEX OF 25 OR LESS, AND SMOKE-DEVELOPED INDEX OF 50 OR LESS.
5. FIRE-BARRIER PENETRATIONS MAINTAIN INDICATED FIRE RATINGS OF WALLS, PARTITIONS, CEILINGS, AND FLOORS AT PIPE PENETRATIONS. REFER TO ARCHITECTURAL PLANS FOR LOCATIONS. SEAL PIPE PENETRATIONS WITH FIRESTOP MATERIALS. REFER TO SPECIFICATIONS FOR ADDITIONAL INFORMATION.

ABBREVIATIONS	DESCRIPTION	ABBREVIATIONS	DESCRIPTION
AWWA	AMERICAN WATER WORKS ASSOCIATION	MT	MALLEABLE IRON THREADED
CI	CAST IRON	NH	NO HUB W/SUPER DUTY HUSKY SD 4000 CLAMP
CDI	CEMENT LINED DUCTILE IRON	PEX	PEX PIPING
CPVC	CHLORINATED POLYVINYL CHLORIDE	PF	PRESSURE FITTING
CUS	WROUGHT COPPER SOLDER (85/15)	PVDF	POLYVINYLIDENE FLUORIDE PIPING
DI	DUCTILE IRON	POLY-PRO	POLYPROPYLENE PIPING
DI-J	DUCTILE IRON MECHANICAL JOINT	STD	STANDARD
GS	GROOVED END STEEL	STL-BLK	BLACK STEEL
GSJ	GROOVED JOINT SYSTEM FITTINGS/COUPLINGS	SV	SERVICE WEIGHT
GS	GALVANIZED STEEL	TJ	THREADED JOINTS
H&S	HUB AND SPIGOT	WE	BUT WELD
MJ	MECHANICAL JOINT		

VALVE SCHEDULE								
DESCRIPTION	SIZE	TYPE					CLASS	REMARKS
		GATE	CHECK	BALL	PLUG	BALANCE		
DOMESTIC COLD WATER	2" AND SMALLER	GVF	CVT	BVT	--	--	125PSI	--
DOMESTIC HOT WATER	2" AND SMALLER	GVF	CVT	BVT	--	CBV	125PSI	--
DOMESTIC COLD WATER	2 1/2" AND LARGER	GVF	CVF	--	--	--	125PSI	--
DOMESTIC HOT WATER	2 1/2" AND LARGER	GVF	CVF	--	--	CBV	125PSI	--
BACKFLOW PREVENTER	2" AND SMALLER	--	--	BVT	--	--	125PSI	--

ABBREVIATION	DESCRIPTION	ABBREVIATION	DESCRIPTION
BVA	BALL VALVE COMPRESSED AIR - 3-PIECE, FULL PORT, BRONZE	CVF	CHECK VALVE FLANGED - IMMB
BVF	BALL VALVE FLANGED - FULL PORT, BRONZE	CVT	CHECK VALVE THREADED - BRONZE
BVGT	PLUG VALVE THREADED - AGA APPROVED	GVF	GATE VALVE FLANGED - IMMB
BVT	BALL VALVE THREADED - 2-PIECE, FULL PORT, 400PSI BRONZE	GVT	GATE VALVE THREADED - BRONZE
CBV	CALIBRATED BALANCING VALVE - BRONZE	PGVF	PLUG VALVE FLANGED - AGA APPROVED
CPRV	CALIBRATED PRESSURE RELIEF VALVE		

INSULATION SCHEDULE					
SYSTEM	PIPE SIZE	INSULATION TYPE	INSULATION THICKNESS	FITTINGS, VALVES, FLANGES INSULATION TYPE	REMARKS
DOMESTIC COLD WATER	ALL	MINERAL FIBER ASJ, SBL	1"	MOLDED, PRE-FORMED MINERAL FIBER WITH PVC JACKET	TYPE 1
DOMESTIC HOT WATER & HW	1 1/2"	MINERAL FIBER ASJ, SBL	1"	MOLDED, PRE-FORMED MINERAL FIBER WITH PVC JACKET	TYPE 1
DOMESTIC HOT WATER & HW	1 1/2"	MINERAL FIBER ASJ, SBL	1"	MOLDED, PRE-FORMED MINERAL FIBER WITH PVC JACKET	TYPE 1

NOTES:
1. FIBERGLASS INSULATION THERMAL CONDUCTIVITY 22 TO 28 BTU x IN./H x FT x F W/100F MEAN TEMP. THICKNESS BASED ON ASHRAE 90.1, 2007 & 8.3
2. REFER TO SPECIFICATIONS FOR ADDITIONAL REQUIREMENTS
3. FOR ITEMS INSTALLED IN PLENUM RATED CEILING, MATERIALS SHALL COMPLY WITH ASTM E 84 WITH FLAME-SPREAD INDEX OF 25 OR LESS, AND SMOKE-DEVELOPED INDEX OF 50 OR LESS.
4. FIRE-BARRIER PENETRATIONS MAINTAIN INDICATED FIRE RATINGS OF WALLS, PARTITIONS, CEILINGS, AND FLOORS AT PIPE PENETRATIONS. REFER TO ARCHITECTURAL PLANS FOR LOCATIONS. SEAL PIPE PENETRATIONS WITH FIRESTOP MATERIALS. REFER TO SPECIFICATIONS FOR ADDITIONAL INFORMATION.

DRAIN SCHEDULE				
MARK	FIXTURE, MODEL NUMBER AND DESCRIPTION	ROUGH-IN		
		TRAP	WASTE	VENT
FD	FLOOR DRAIN (TOILET ROOM), WATTS PD100-AB, HEAVY DUTY CAST IRON BODY, BOTTOM OUTLET, 6"x6" SQUARE NICKEL BRONZE TOP, TRAP PRIMER CONNECTION, SEEPAGE PAN AND COMBINATION MEMBRANE FLASHING CLAMP	AS NOTED ON DRWS.	AS NOTED ON DRWS.	AS NOTED ON DRWS.

NOTES:
1. PROVIDE SURSEAL (OR EQUAL) IN LINE FLOOR DRAIN TRAP SEALER FOR ALL FLOOR DRAINS.
2. TRANSITION COUPLINGS AND NO-HUB PIPE SHALL NOT BE INSTALLED BELOW SLAB OR IN ANY BURIED CONDITIONS IN CONTACT WITH EARTH

BACKFLOW PREVENTER SCHEDULE								
MARK	SIZE	LOCATION	SERVICE	BODY MATERIAL	TEMPERATURE RANGE	MAX. WORKING PRESSURE	MANUFACTURER	REMARKS
							MODEL	
BPP	1/2"	JANITOR CLOSET	HOT SINK CHEM. DISPENSER FEED / MISC. MAKE-UP LINE	BRONZE	33F-140F	175PSI	WILKINS STEXL-S	LEAD FREE WITH STRAINER

