

ADA IMPROVEMENTS – PHASE 1

**KILLINGLY MEMORIAL SCHOOL
339 MAIN STREET
DANIELSON, CT 06239
STATE PROJECT NO. 069-0068 CV**

S/P+A PROJECT NO. 17.183a

DATE: October 11, 2018

The following changes to the Drawings and Project Specifications shall become a part of the Drawings and Project Specifications; superseding previously issued Drawings and Project Specifications to the extent modified by Addendum No. 1.

General Information:

- The prebid sign-in sheet is attached for reference. (2)
- The deadline for RFIs is Monday, October 15, 2018.

Changes to the Specifications:

- TABLE OF CONTENTS, Page 1, Division 02 – Existing Conditions, add the following:

“Section 028200	Selective Hazardous Building Material Abatement Demolition	4
Section 028213	Asbestos Abatement	30
Section 028313	Lead-Based Paint Awareness	10
Section 028416	Universal Waste Removal and Recycling	7
	Limited Hazardous Building Materials Survey Report, June 2018	37”

(Per Internal Review)

- PREVAILING WAGE RATE INFORMATION, Wage Rates, dated September 14, 2018 and titled Killingly Central School, delete in their entirety. New Wage Rates, dated September 19, 2018, have been added and are attached as part of this addendum. (15) *(Per State Requirements)*
- DRAWING LIST, Page 1, after “A600...” add the following:

“ABATEMENT DRAWINGS

HBM-01 HAZARDOUS BUILDING MATERIALS ABATEMENT PLAN – MAIN LEVEL
HBM-02-HBM-05 ENLARGED ABATEMENT FLOOR PLANS” *(Per Internal Review)*

- SECTION 011000, SUMMARY OF WORK, Page 3, Article 1.5.E.2.a., revise “dusk” to read “10:30 p.m.”. *(Per Owner)*

Changes to the Drawings:

- The following ARCHITECTURAL drawings have been deleted in their entirety. New drawings have been added and are attached as part of this addendum*. (3)

- A111 ENLARGED DEMOLITION PLANS (*Per Internal Review*)
- A410 ENLARGED SINK PLANS, ELEVATIONS & DETAILS (*Per Internal Review*)
- A600 ENLARGED PARTIAL FINISH PLANS (*Per Internal Review*)

The addendum consists of nineteen (19) pages of 8½” x 11” text and three (3) 30” x 42” drawings*.
End of Addendum ‘1’

Project: Killingly Memorial School ADA Improvements

**Minimum Rates and Classifications
for Building Construction**

ID# : B 25282

**Connecticut Department of Labor
Wage and Workplace Standards Division**

By virtue of the authority vested in the Labor Commissioner under provisions of Section 31-53 of the General Statutes of Connecticut, as amended, the following are declared to be the prevailing rates and welfare payments and will apply only where the contract is advertised for bid within 20 days of the date on which the rates are established. Any contractor or subcontractor not obligated by agreement to pay to the welfare and pension fund shall pay this amount to each employee as part of his/her hourly wages.

Project Number:

Project Town: Killingly

State#:

FAP#:

Project: Killingly Memorial School ADA Improvements

CLASSIFICATION	Hourly Rate	Benefits
1a) Asbestos Worker/Insulator (Includes application of insulating materials, protective coverings, coatings, & finishes to all types of mechanical systems; application of firestopping material for wall openings & penetrations in walls, floors, ceilings	38.25	27.96
<hr/>		
1b) Asbestos/Toxic Waste Removal Laborers: Asbestos removal and encapsulation (except its removal from mechanical systems which are not to be scrapped), toxic waste removers, blasters.**See Laborers Group 7**		
<hr/>		
1c) Asbestos Worker/Heat and Frost Insulator	40.21	29.30

As of: Wednesday, September 19, 2018

Project: Killingly Memorial School ADA Improvements

2) Boilermaker	38.34	26.01
----------------	-------	-------

3a) Bricklayer, Cement Mason, Concrete Finisher (including caulking), Stone Masons	33.48	32.06 + a
---------------------------------------------------------------------------------------	-------	-----------

3b) Tile Setter	34.90	25.87
-----------------	-------	-------

3c) Terrazzo Mechanics and Marble Setters	31.69	22.35
-------------------------------------------	-------	-------

3d) Tile, Marble & Terrazzo Finishers	26.70	21.75
---------------------------------------	-------	-------

3e) Plasterer	33.48	32.06
---------------	-------	-------

As of: Wednesday, September 19, 2018

Project: Killingly Memorial School ADA Improvements

-----LABORERS-----

4) Group 1: Laborers (common or general), acetylene burners, carpenter tenders, concrete specialists, wrecking laborers, fire watchers.	30.05	20.10
<hr/>		
4a) Group 2: Mortar mixers, plaster tender, power buggy operators, powdermen, fireproofers/mixer/nozzlemans (Person running mixer and spraying fireproof only).	30.30	20.10
<hr/>		
4b) Group 3: Jackhammer operators/pavement breaker, mason tender (brick), mason tender (cement/concrete), forklift operators and forklift operators (masonry).	30.55	20.10
<hr/>		
4c) **Group 4: Pipelayers (Installation of water, storm drainage or sewage lines outside of the building line with P6, P7 license) (the pipelayer rate shall apply only to one or two employees of the total crew whose primary task is to actually perform the mating of pipe sections) P6 and P7 rate is \$26.80.	30.55	20.10
<hr/>		
4d) Group 5: Air track operator, sand blaster and hydraulic drills.	30.55	20.10
<hr/>		

Project: Killingly Memorial School ADA Improvements

4e) Group 6: Blasters, nuclear and toxic waste removal.	31.80	20.10
---------------------------------------------------------	-------	-------

4f) Group 7: Asbestos/lead removal and encapsulation (except it's removal from mechanical systems which are not to be scrapped).	31.05	20.10
----------------------------------------------------------------------------------------------------------------------------------	-------	-------

4g) Group 8: Bottom men on open air caisson, cylindrical work and boring crew.	28.38	20.10
--------------------------------------------------------------------------------	-------	-------

4h) Group 9: Top men on open air caisson, cylindrical work and boring crew.	27.86	20.10
-----------------------------------------------------------------------------	-------	-------

4i) Group 10: Traffic Control Signalman	16.00	20.10
-----------------------------------------	-------	-------

5) Carpenter, Acoustical Ceiling Installation, Soft Floor/Carpet Laying, Metal Stud Installation, Form Work and Scaffold Building, Drywall Hanging, Modular-Furniture Systems Installers, Lathers, Piledrivers, Resilient Floor Layers.	32.60	25.34
-----------------------------------------------------------------------------------------------------------------------------------------------------------------------------------------------------------------------------------------	-------	-------

As of: Wednesday, September 19, 2018

Project: Killingly Memorial School ADA Improvements

5a) Millwrights 33.14 25.74

6) Electrical Worker (including low voltage wiring) (Trade License required: E1,2 L-5,6 C-5,6 T-1,2 L-1,2 V-1,2,7,8,9) 40.00 25.97+3% of gross wage

7a) Elevator Mechanic (Trade License required: R-1,2,5,6) 51.71 32.645+a+b

-----LINE CONSTRUCTION-----

Groundman 26.50 6.5% + 9.00

Linemen/Cable Splicer 48.19 6.5% + 22.00

As of: Wednesday, September 19, 2018

Project: Killingly Memorial School ADA Improvements

8) Glazier (Trade License required: FG-1,2) 37.18 21.05 + a

9) Ironworker, Ornamental, Reinforcing, Structural, and Precast Concrete Erection 35.47 35.14 + a

----OPERATORS----

Group 1: Crane handling or erecting structural steel or stone, hoisting engineer 2 drums or over, front end loader (7 cubic yards or over), work boat 26 ft. and over and Tunnel Boring Machines. (Trade License Required) 39.55 24.05 + a

Group 2: Cranes (100 ton rate capacity and over); Excavator over 2 cubic yards; Piledriver (\$3.00 premium when operator controls hammer); Bauer Drill/Caisson. (Trade License Required) 39.23 24.05 + a

Group 3: Excavator; Backhoe/Excavator under 2 cubic yards; Cranes (under 100 ton rated capacity), Grader/Blade; Master Mechanic; Hoisting Engineer (all types of equipment where a drum and cable are used to hoist or drag material regardless of motive power of operation), Rubber Tire Excavator (Drott-1085 or similar); Grader Operator; Bulldozer Fine Grade. (slopes, shaping, laser or GPS, etc.). (Trade License Required) 38.49 24.05 + a

As of: Wednesday, September 19, 2018

Project: Killingly Memorial School ADA Improvements

Group 4: Trenching Machines; Lighter Derrick; Concrete Finishing Machine; CMI Machine or Similar; Koehring Loader (Skooper).	38.10	24.05 + a
------------------------------------------------------------------------------------------------------------------------------	-------	-----------

Group 5: Specialty Railroad Equipment; Asphalt Paver; Asphalt Reclaiming Machine; Line Grinder; Concrete Pumps; Drills with Self Contained Power Units; Boring Machine; Post Hole Digger; Auger; Pounder; Well Digger; Milling Machine (over 24" Mandrell)	37.51	24.05 + a
------------------------------------------------------------------------------------------------------------------------------------------------------------------------------------------------------------------------------------------------------------	-------	-----------

Group 5 continued: Side Boom; Combination Hoe and Loader; Directional Driller; Pile Testing Machine.	37.51	24.05 + a
------------------------------------------------------------------------------------------------------	-------	-----------

Group 6: Front End Loader (3 up to 7 cubic yards); Bulldozer (rough grade dozer).	37.20	24.05 + a
-----------------------------------------------------------------------------------	-------	-----------

Group 7: Asphalt roller, concrete saws and cutters (ride on types), vermeer concrete cutter, Stump Grinder; Scraper; Snooper; Skidder; Milling Machine (24" and under Mandrell).	36.86	24.05 + a
----------------------------------------------------------------------------------------------------------------------------------------------------------------------------------	-------	-----------

Group 8: Mechanic, grease truck operator, hydroblaster; barrier mover; power stone spreader; welding; work boat under 26 ft.; transfer machine.	36.46	24.05 + a
-------------------------------------------------------------------------------------------------------------------------------------------------	-------	-----------

As of: Wednesday, September 19, 2018

Project: Killingly Memorial School ADA Improvements

Group 9: Front end loader (under 3 cubic yards), skid steer loader regardless of attachments, (Bobcat or Similar): forklift, power chipper; landscape equipment (including Hydroseeder).	36.03	24.05 + a
------------------------------------------------------------------------------------------------------------------------------------------------------------------------------------------	-------	-----------

Group 10: Vibratory hammer; ice machine; diesel and air, hammer, etc.	33.99	24.05 + a
-----------------------------------------------------------------------	-------	-----------

Group 11: Conveyor, earth roller, power pavement breaker (whiphammer), robot demolition equipment.	33.99	24.05 + a
----------------------------------------------------------------------------------------------------	-------	-----------

Group 12: Wellpoint operator.	33.93	24.05 + a
-------------------------------	-------	-----------

Group 13: Compressor battery operator.	33.35	24.05 + a
----------------------------------------	-------	-----------

Group 14: Elevator operator; tow motor operator (solid tire no rough terrain).	32.21	24.05 + a
--------------------------------------------------------------------------------	-------	-----------

As of: Wednesday, September 19, 2018

Project: Killingly Memorial School ADA Improvements

Group 15: Generator Operator; Compressor Operator; Pump Operator; Welding Machine Operator; Heater Operator.	31.80	24.05 + a
--------------------------------------------------------------------------------------------------------------	-------	-----------

Group 16: Maintenance Engineer/Oiler.	31.15	24.05 + a
---------------------------------------	-------	-----------

Group 17: Portable asphalt plant operator; portable crusher plant operator; portable concrete plant operator.	35.46	24.05 + a
---------------------------------------------------------------------------------------------------------------	-------	-----------

Group 18: Power safety boat; vacuum truck; zim mixer; sweeper; (Minimum for any job requiring a CDL license).	33.04	24.05 + a
---------------------------------------------------------------------------------------------------------------	-------	-----------

-----PAINTERS (Including Drywall Finishing)-----

10a) Brush and Roller	33.62	21.05
-----------------------	-------	-------

Project: Killingly Memorial School ADA Improvements

10b) Taping Only/Drywall Finishing	34.37	21.05
------------------------------------	-------	-------

10c) Paperhanger and Red Label	34.12	21.05
--------------------------------	-------	-------

10e) Blast and Spray	36.62	21.05
----------------------	-------	-------

11) Plumber (excluding HVAC pipe installation) (Trade License required: P-1,2,6,7,8,9 J-1,2,3,4 SP-1,2)	42.62	31.21
------------------------------------------------------------------------------------------------------------	-------	-------

12) Well Digger, Pile Testing Machine	37.26	24.05 + a
---------------------------------------	-------	-----------

13) Roofer (composition)	35.97	19.73
--------------------------	-------	-------

As of: Wednesday, September 19, 2018

Project: Killingly Memorial School ADA Improvements

14) Roofer (slate & tile)	36.47	19.73
---------------------------	-------	-------

15) Sheetmetal Worker (Trade License required for HVAC and Ductwork: SM-1,SM-2,SM-3,SM-4,SM-5,SM-6)	37.50	36.79
--------------------------------------------------------------------------------------------------------	-------	-------

16) Pipefitter (Including HVAC work) (Trade License required: S-1,2,3,4,5,6,7,8 B-1,2,3,4 D-1,2,3,4, G-1, G-2, G-8 & G-9)	42.62	31.21
---------------------------------------------------------------------------------------------------------------------------	-------	-------

-----TRUCK DRIVERS-----

17a) 2 Axle	29.13	23.33 + a
-------------	-------	-----------

17b) 3 Axle, 2 Axle Ready Mix	29.23	23.33 + a
-------------------------------	-------	-----------

As of: Wednesday, September 19, 2018

Project: Killingly Memorial School ADA Improvements

17c) 3 Axle Ready Mix	29.28	23.33 + a
-----------------------	-------	-----------

17d) 4 Axle, Heavy Duty Trailer up to 40 tons	29.33	23.33 + a
-----------------------------------------------	-------	-----------

17e) 4 Axle Ready Mix	29.38	23.33 + a
-----------------------	-------	-----------

17f) Heavy Duty Trailer (40 Tons and Over)	29.58	23.33 + a
--------------------------------------------	-------	-----------

17g) Specialized Earth Moving Equipment (Other Than Conventional Type on-the-Road Trucks and Semi-Trailers, Including Euclids)	29.38	23.33 + a
--------------------------------------------------------------------------------------------------------------------------------	-------	-----------

18) Sprinkler Fitter (Trade License required: F-1,2,3,4)	43.92	15.84 + a
----------------------------------------------------------	-------	-----------

As of: Wednesday, September 19, 2018

Project: Killingly Memorial School ADA Improvements

19) Theatrical Stage Journeyman	25.76	7.34
---------------------------------	-------	------

Project: Killingly Memorial School ADA Improvements

Welders: Rate for craft to which welding is incidental.

**Note: Hazardous waste removal work receives additional \$1.25 per hour for truck drivers.*

***Note: Hazardous waste premium \$3.00 per hour over classified rate*

ALL Cranes: When crane operator is operating equipment that requires a fully licensed crane operator to operate he receives an extra \$4.00 premium in addition to the hourly wage rate and benefit contributions:

1) Crane handling or erecting structural steel or stone; hoisting engineer (2 drums or over)

2) Cranes (100 ton rate capacity and over) Bauer Drill/Caisson

3) Cranes (under 100 ton rated capacity)

Crane with 150 ft. boom (including jib) - \$1.50 extra

Crane with 200 ft. boom (including jib) - \$2.50 extra

Crane with 250 ft. boom (including jib) - \$5.00 extra

Crane with 300 ft. boom (including jib) - \$7.00 extra

Crane with 400 ft. boom (including jib) - \$10.00 extra

All classifications that indicate a percentage of the fringe benefits must be calculated at the percentage rate times the "base hourly rate".

Apprentices duly registered under the Commissioner of Labor's regulations on "Work Training Standards for Apprenticeship and Training Programs" Section 31-51-d-1 to 12, are allowed to be paid the appropriate percentage of the prevailing journeymen hourly base and the full fringe benefit rate, providing the work site ratio shall not be less than one full-time journeyman instructing and supervising the work of each apprentice in a specific trade.

The Prevailing wage rates applicable to this project are subject to annual adjustments each July 1st for the duration of the project.

Each contractor shall pay the annual adjusted prevailing wage rate that is in effect each July 1st, as posted by the Department of Labor.

It is the contractor's responsibility to obtain the annual adjusted prevailing wage rate increases directly from the Department of Labor's website.

The annual adjustments will be posted on the Department of Labor's Web page: www.ct.gov/dol. For those without internet access, please contact the division listed below.

The Department of Labor will continue to issue the initial prevailing wage rate schedule to the Contracting Agency for the project.

All subsequent annual adjustments will be posted on our Web Site for contractor access.

Contracting Agencies are under no obligation pursuant to State labor law to pay any increase due to the annual adjustment provision.

As of: Wednesday, September 19, 2018

Project: Killingly Memorial School ADA Improvements

Effective October 1, 2005 - Public Act 05-50: any person performing the work of any mechanic, laborer, or worker shall be paid prevailing wage

All Person who perform work ON SITE must be paid prevailing wage for the appropriate mechanic, laborer, or worker classification.

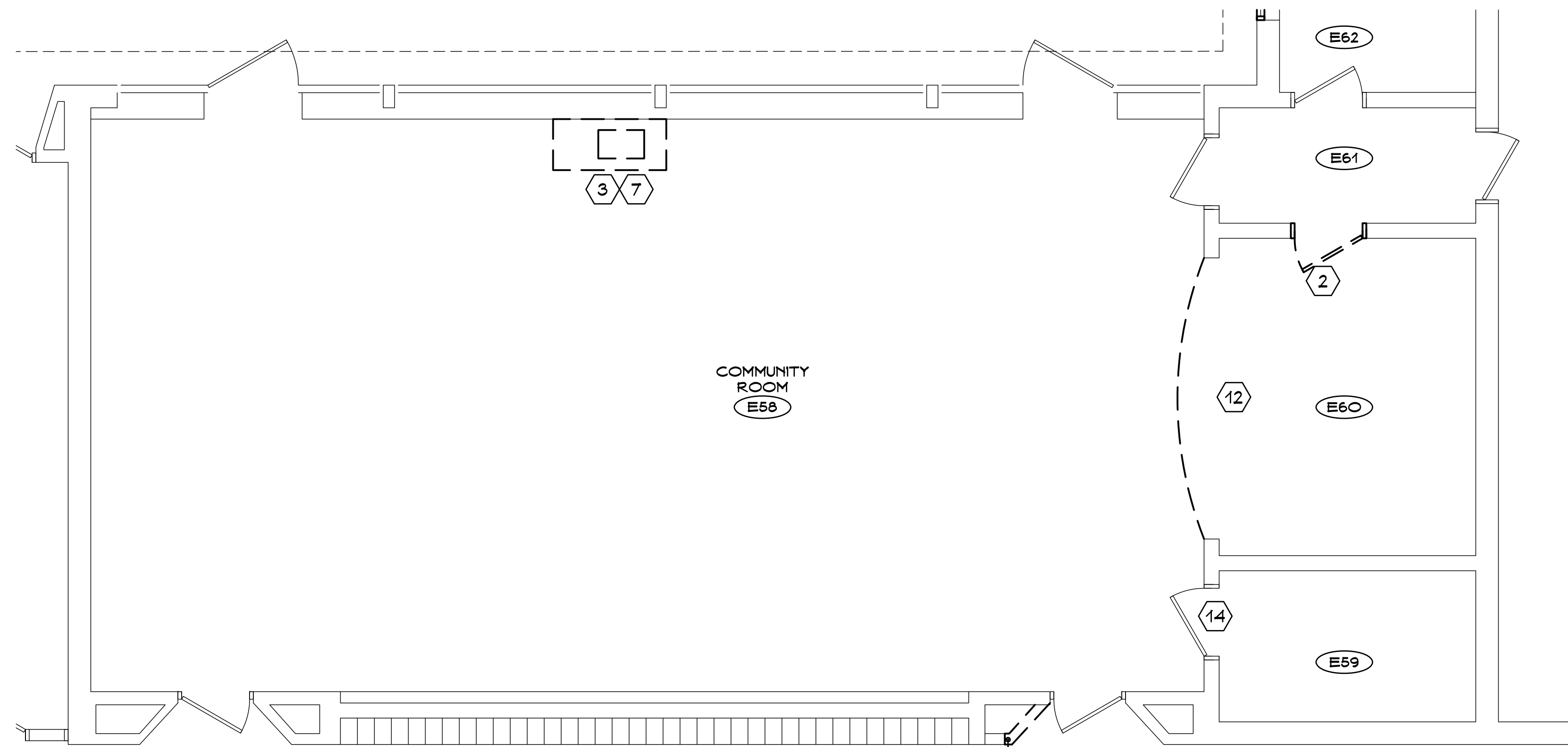
All certified payrolls must list the hours worked and wages paid to All Persons who perform work ON SITE regardless of their ownership i.e.: (Owners, Corporate Officers, LLC Members, Independent Contractors, et. al)

Reporting and payment of wages is required regardless of any contractual relationship alleged to exist between the contractor and such person.

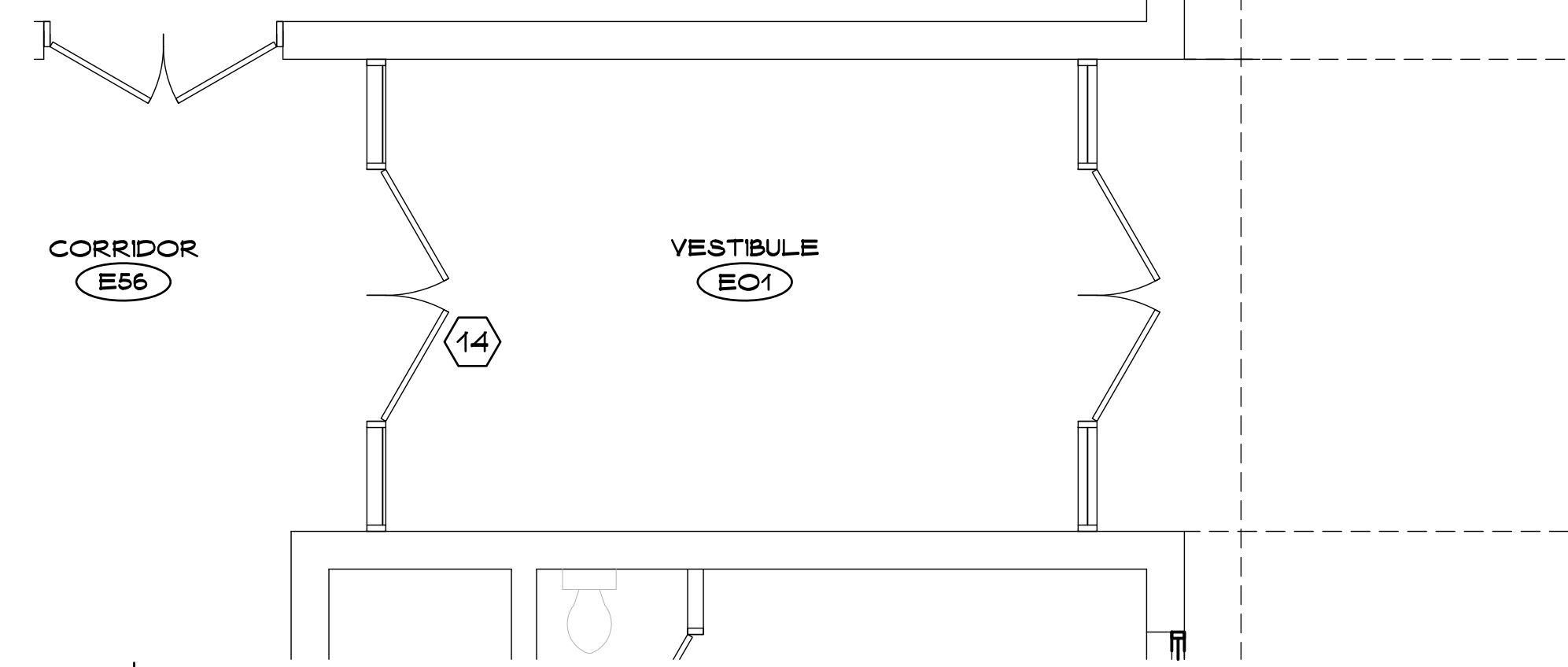
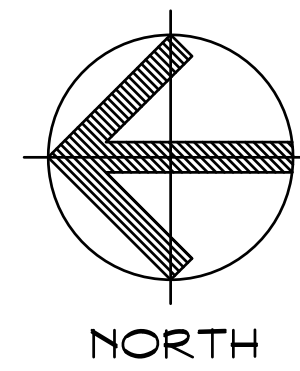
~~Unlisted classifications needed for work not included within the scope of the classifications listed may be added after award only as provided in the labor standards contract clause (29 CFR 5.5 (a) (1) (ii)).

Please direct any questions which you may have pertaining to classification of work and payment of prevailing wages to the Wage and Workplace Standards Division, telephone (860)263-6790.

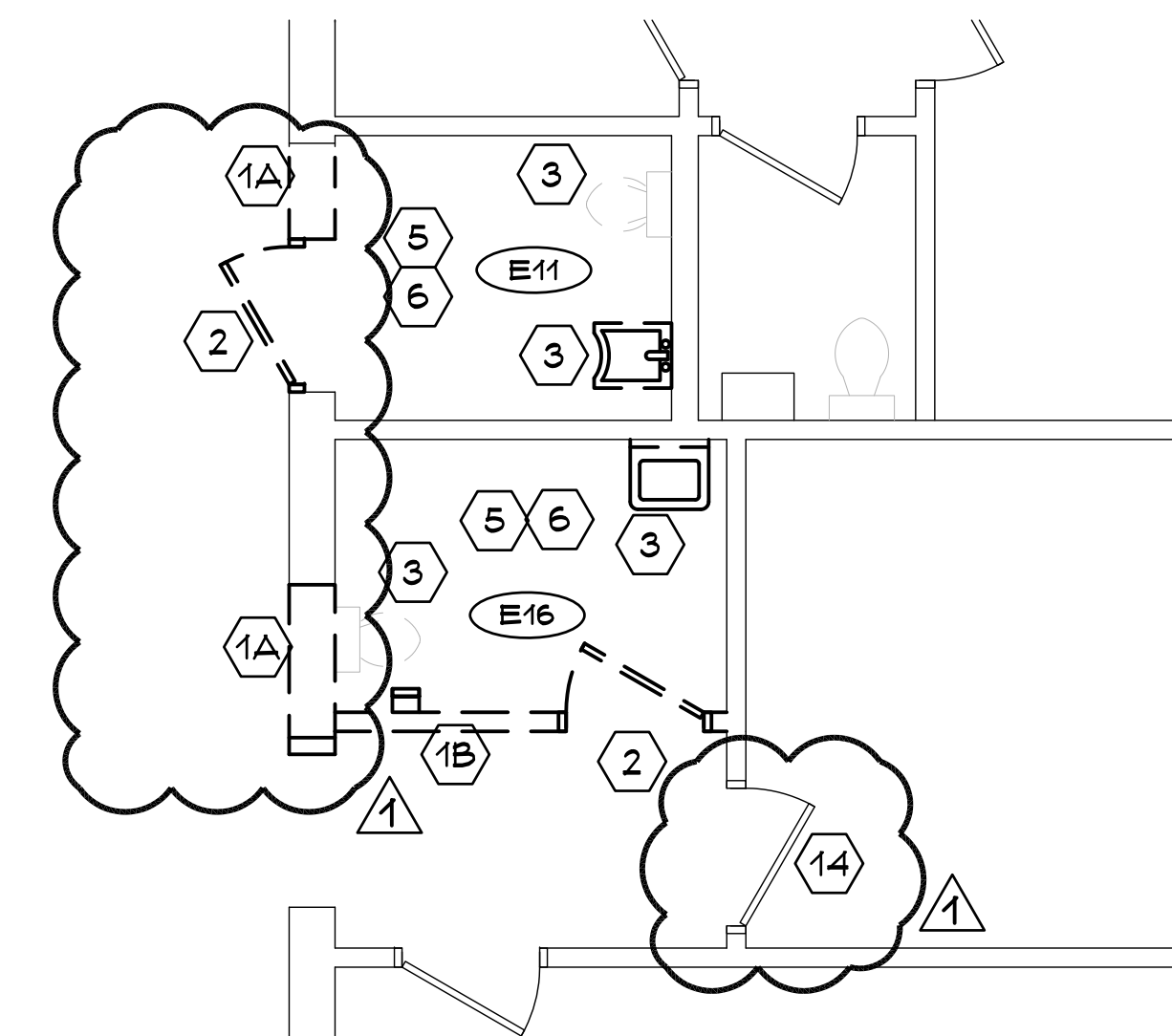
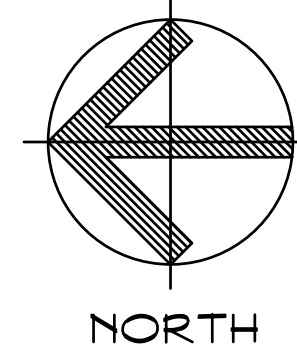
As of: Wednesday, September 19, 2018



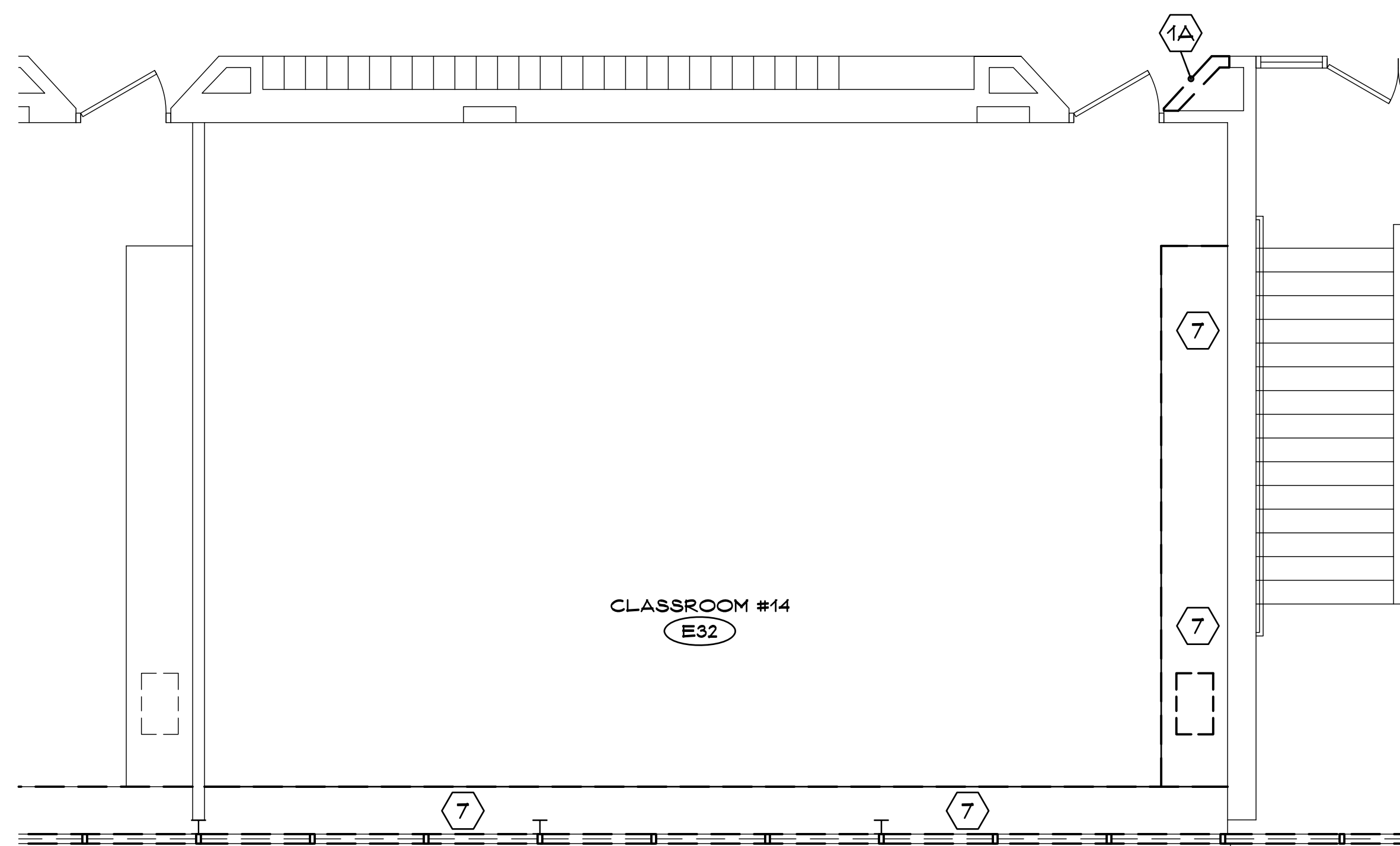
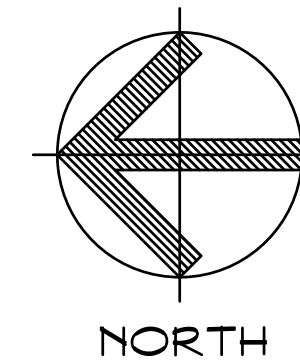
ENLARGED PLAN - COMMUNITY ROOM E58 1
SCALE: 1/4" = 1'-0" A111



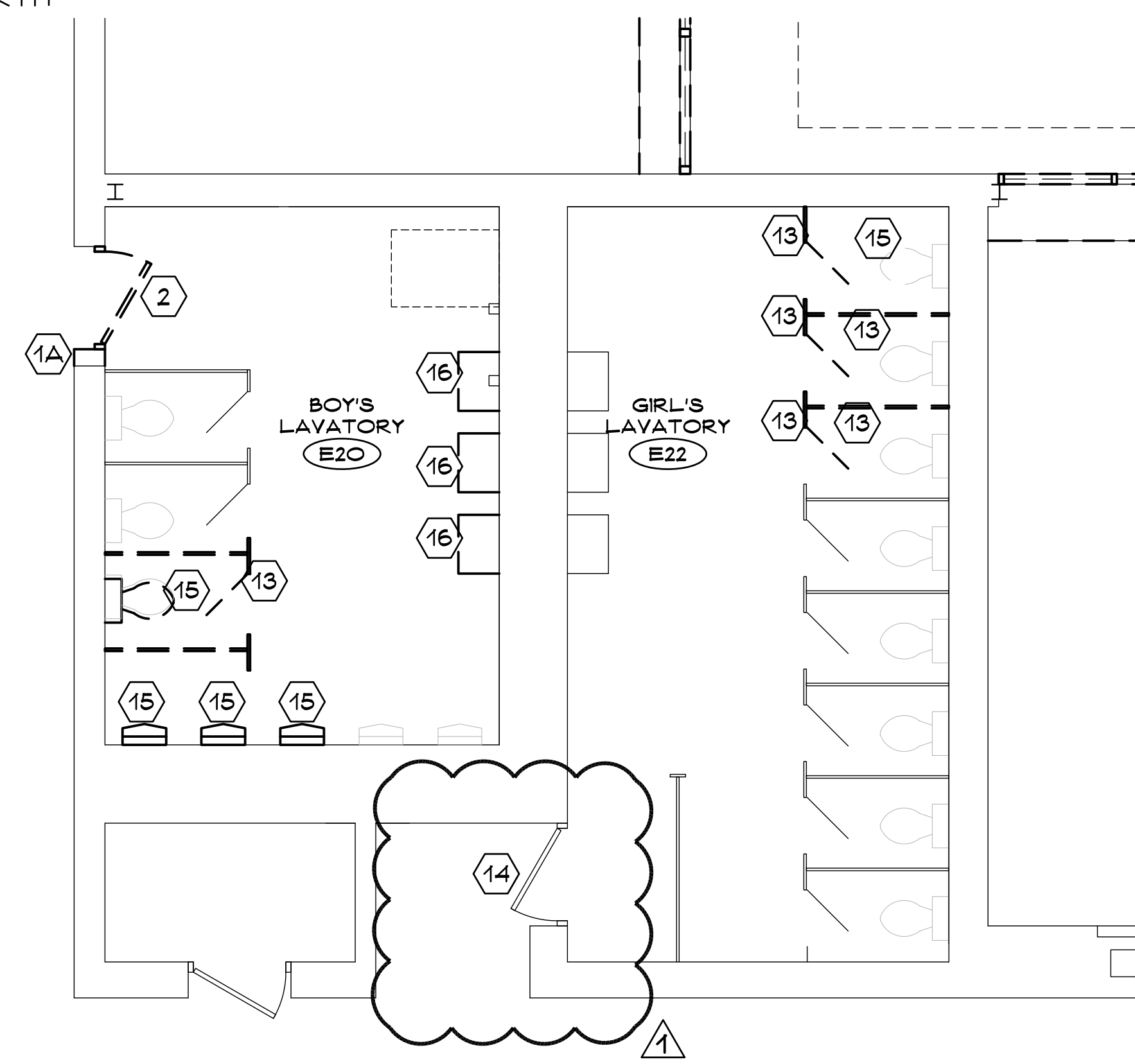
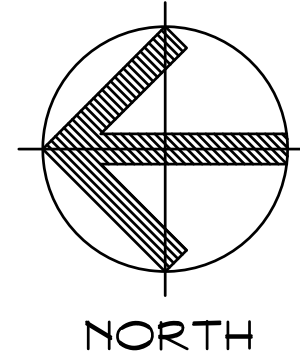
ENLARGED PLAN - VESTIBULE EO1 2
SCALE: 1/4" = 1'-0" A111



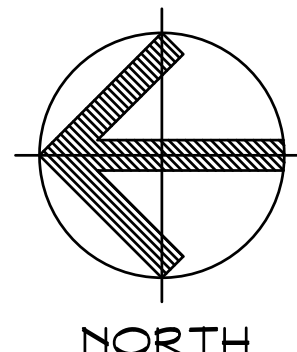
ENLARGED PLAN - E11 AND E16 3
SCALE: 1/4" = 1'-0" A111



ENLARGED PLAN - CLASSROOM #14 E32 5
SCALE: 1/4" = 1'-0" A111



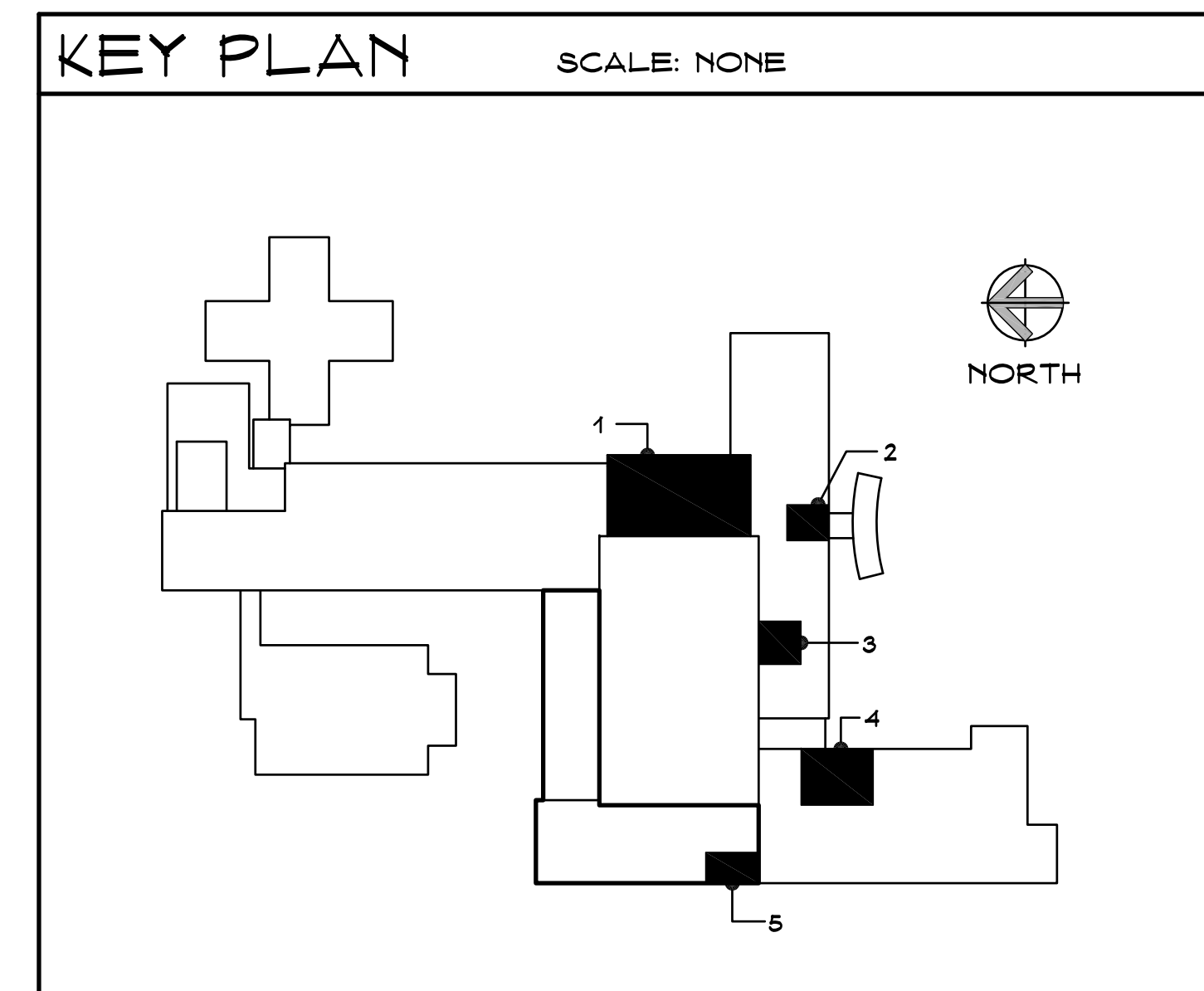
ENLARGED PLAN - TOILETS E20 AND E22 4
SCALE: 1/4" = 1'-0" A111



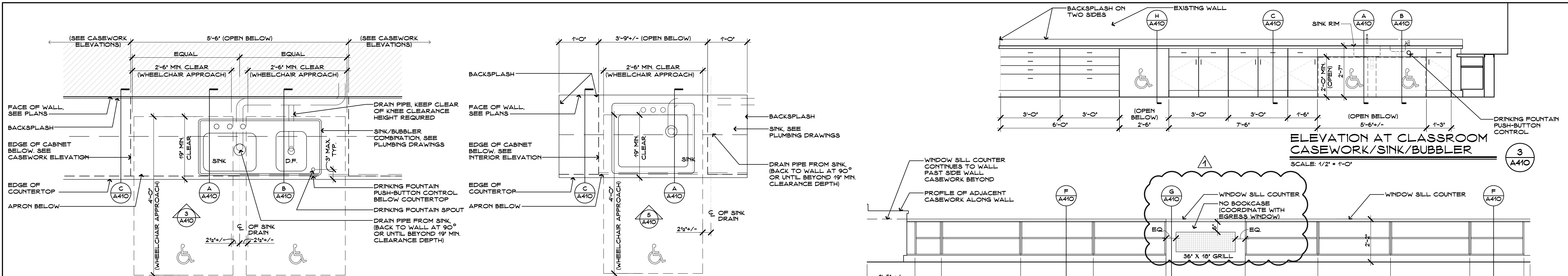
SYMBOL LEGEND	
	EXISTING WALLS TO REMAIN
	EXISTING WALLS TO BE REMOVED
	EXISTING PLUMBING FIXTURES TO BE REMOVED, SEE ALSO PLUMBING DRAWINGS
	DASHED LINES INDICATE REMOVALS, SEE DEMOLITION NOTES ON ARCHITECTURAL AS WELL AS ALL MEP DRAWINGS.
	EXISTING DOOR TO REMAIN, SEE DOOR SCHEDULE FOR WORK REQUIRED
	EXISTING DOOR AND HARDWARE TO BE REMOVED, SEE DOOR SCHEDULE FOR FRAMES TO REMAIN
	REVISION TAG
	DEMOLITION KEY NOTE

- GENERAL NOTES**
- REFER TO PROJECT MANUAL PRIOR TO ANY REMOVALS.
 - CONTRACTORS SHALL FIELD VERIFY ALL CONDITIONS AND DIMENSIONS.
 - PATCH TO MATCH ALL EXISTING WALLS, FLOORS (INCLUDING SLABS) AND OTHER SURFACES AFFECTED BY REMOVALS.
 - ALL DIMENSIONS ARE TO OUTSIDE FACE OF BRICK, CONCRETE MASONRY UNITS AND GYPSUM WALLBOARD.
 - SEE ALSO MECHANICAL, PLUMBING, AND ELECTRICAL DRAWINGS FOR ADDITIONAL INFORMATION.
 - SEE ALSO DOOR SCHEDULE FOR DOOR FRAMES TO REMAIN.
 - COORDINATE ALL DEMOLITION WITH NEW WORK REQUIRED, SEE ALSO ALL OTHER DRAWINGS AND PROJECT MANUAL.

- DEMOLITION KEY NOTES: (#)**
- (A) REMOVE INTERIOR MASONRY PARTITION. COORDINATE EXTENT OF DEMOLITION WITH CONSTRUCTION DRAWINGS. PROVIDE SHORING AS REQUIRED FOR NEW SUPPORTS AND/OR LITE.
 - (B) REMOVE INTERIOR GYPSUM BOARD/STUD PARTITION. COORDINATE EXTENT OF DEMOLITION WITH CONSTRUCTION DRAWINGS.
 - COMPLETELY REMOVE DOORS, FRAMES (INCLUDING SIDELIGHTS AND TRANSOMS), GLASS ASSEMBLY (IF PRESENT), AND ASSOCIATED HARDWARE, AND ACCESSORIES.
 - REMOVE ALL PLUMBING FIXTURES (SINKS, TOILETS, ETC.) ASSOCIATED HARDWARE, AND ACCESSORIES.
 - REMOVE ENTIRE CEILING SYSTEM INCLUDING ALL SUSPENSION SYSTEMS AND FRAMING.
 - REMOVE EXISTING FLOORING (TILE/V.C.T./CARPET, V.P.) AND ASSOCIATED BASES IF APPLICABLE WITH ROOM/SPACE (UNLESS SPECIFIC AREA IS INDICATED). CLEAN AND PREP. SUBSTRATE TO ACCOMMODATE NEW FINISH.
 - REMOVE BUILT-IN CASEWORK INCLUDING COUNTERTOP, BACKSPLASH, BASES, BASE AND TOP CABINETS, SHELVES, PLUMBING FIXTURES AND HARDWARE. SEE ALSO MEP DRAWINGS.
 - REMOVE EXISTING DOOR LEAFS AND ASSOCIATED HARDWARE, FRAME TO REMAIN.
 - NOT USED.
 - NOT USED.
 - NOT USED.
 - REMOVE ENTIRE EXISTING WOOD PLATFORM, TO INCLUDE FINISH FLOOR, SUBFLOOR, FRAMING AND TRIM.
 - REMOVE EXISTING TOILET PARTITIONS AT LOCATIONS INDICATED IN PLAN.
 - REMOVE EXISTING DOOR OPERATING HARDWARE (PANIC BAR, DOOR PULLS AND THUMB LATCHES, KNOBS), DOOR TO REMAIN.
 - REMOVE TOILET OR URINAL AS SHOWN, INCLUDING ALL ASSOC. PIPING.
 - REMOVE SINK AS SHOWN, INCLUDING ALL ASSOC. PIPING.
 - NOT USED.
 - REMOVE EXISTING TOILET PARTITION AS SHOWN.

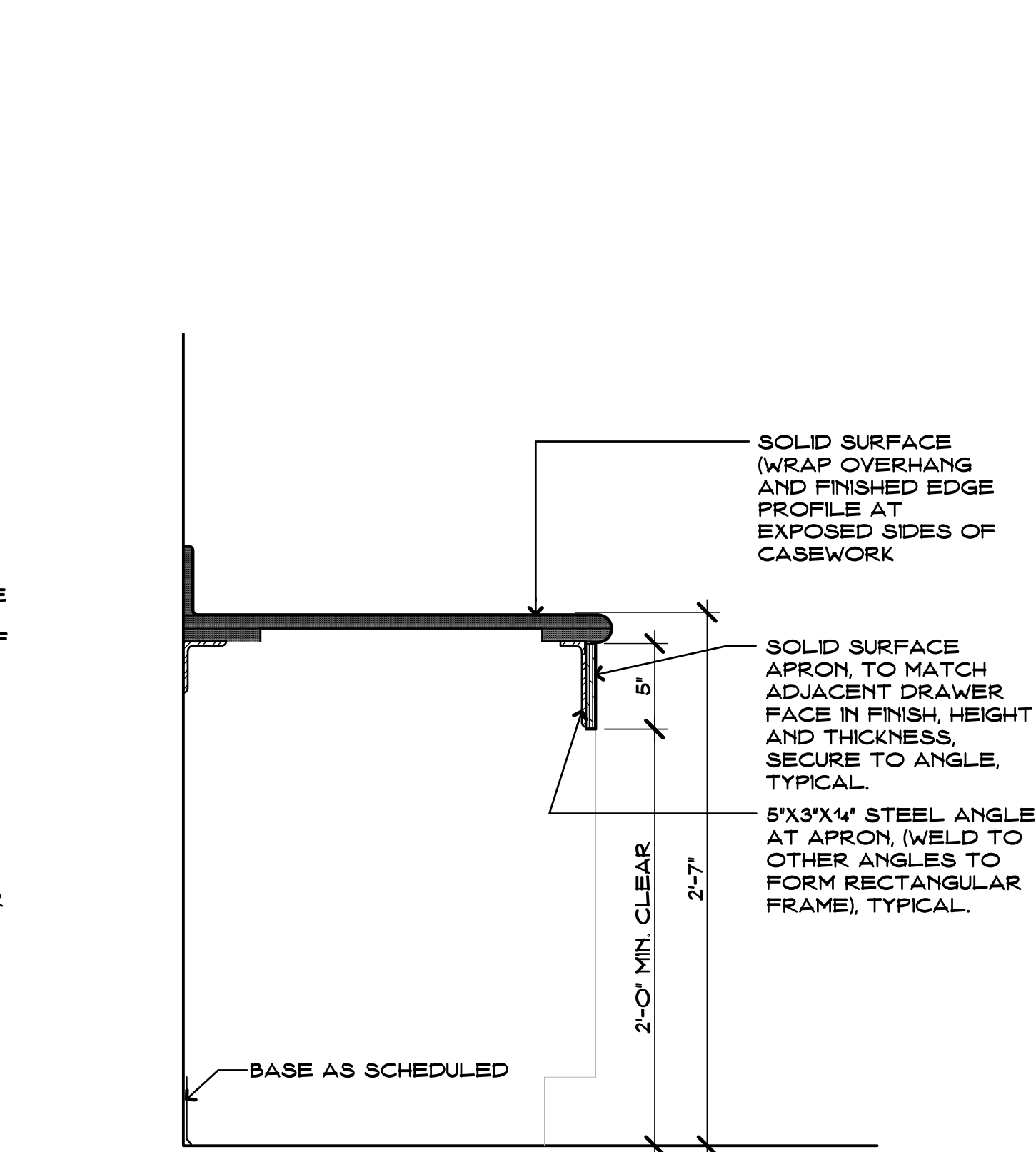
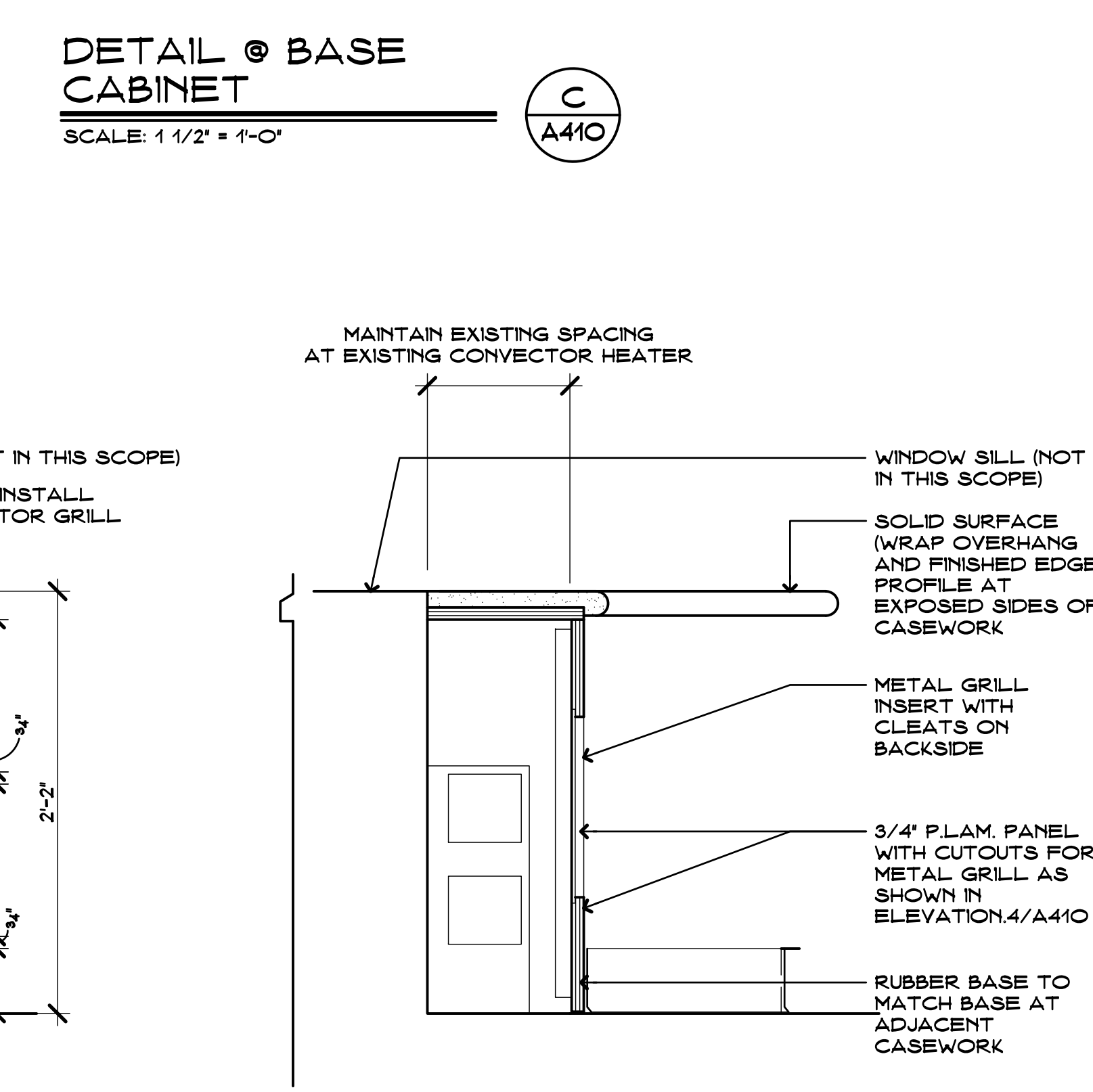
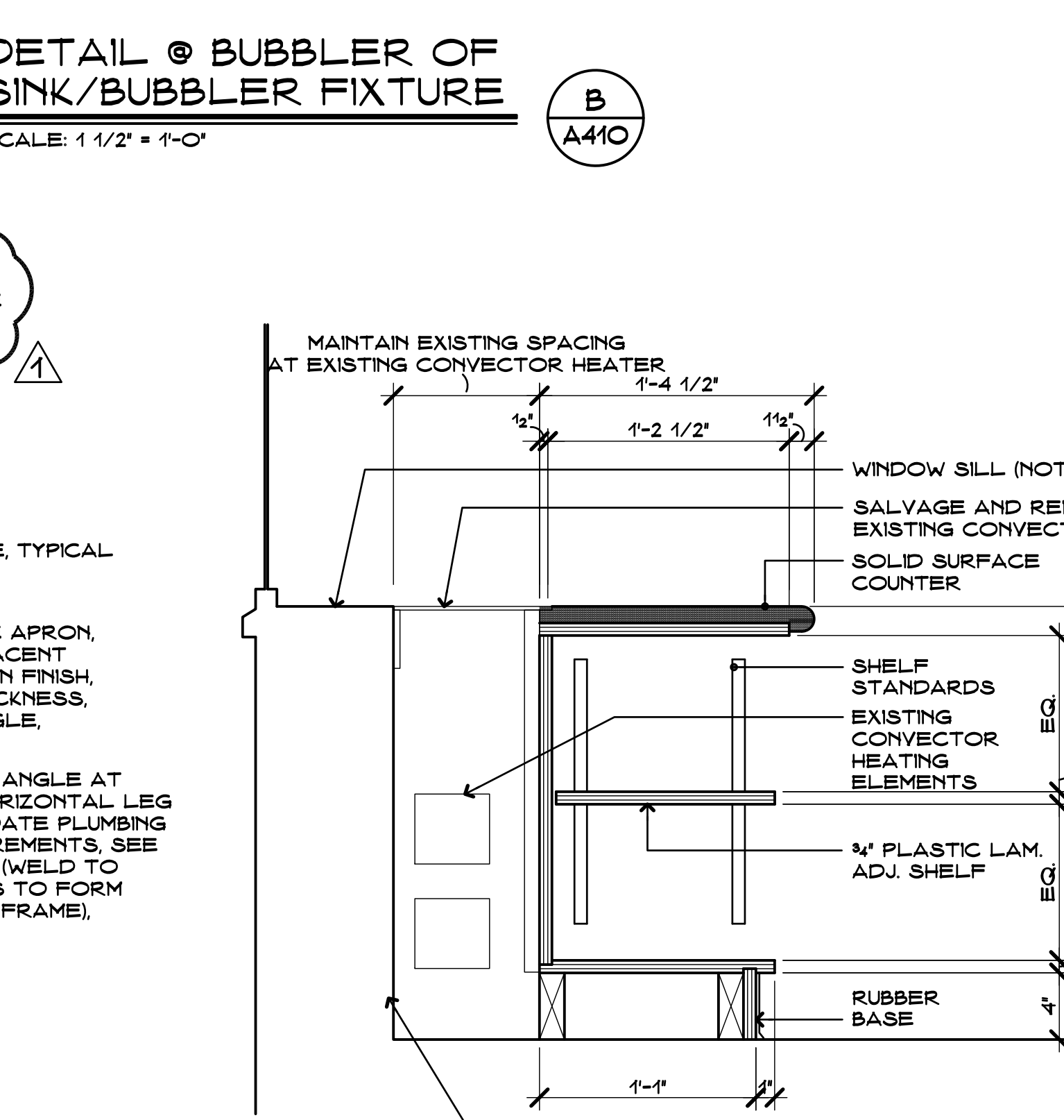
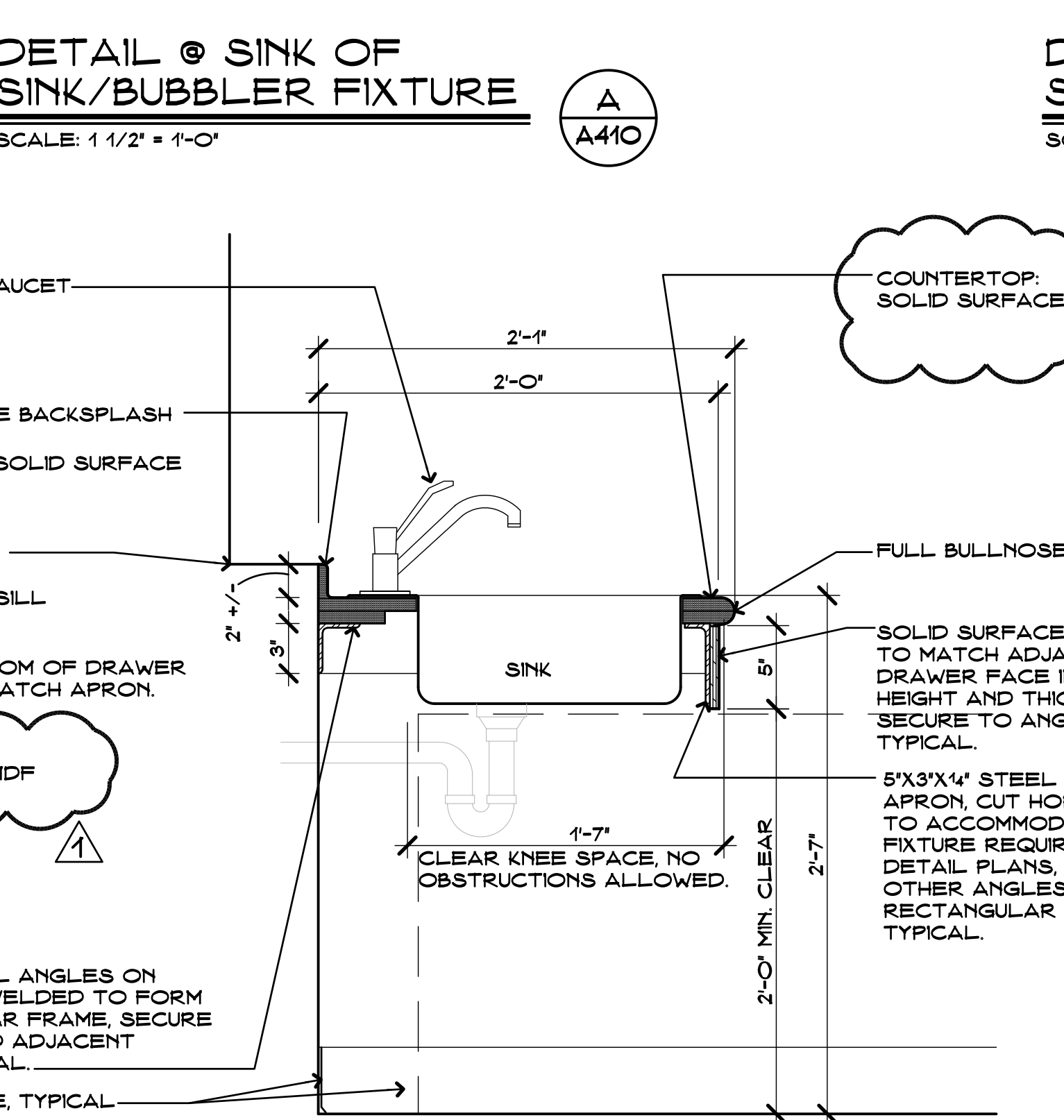
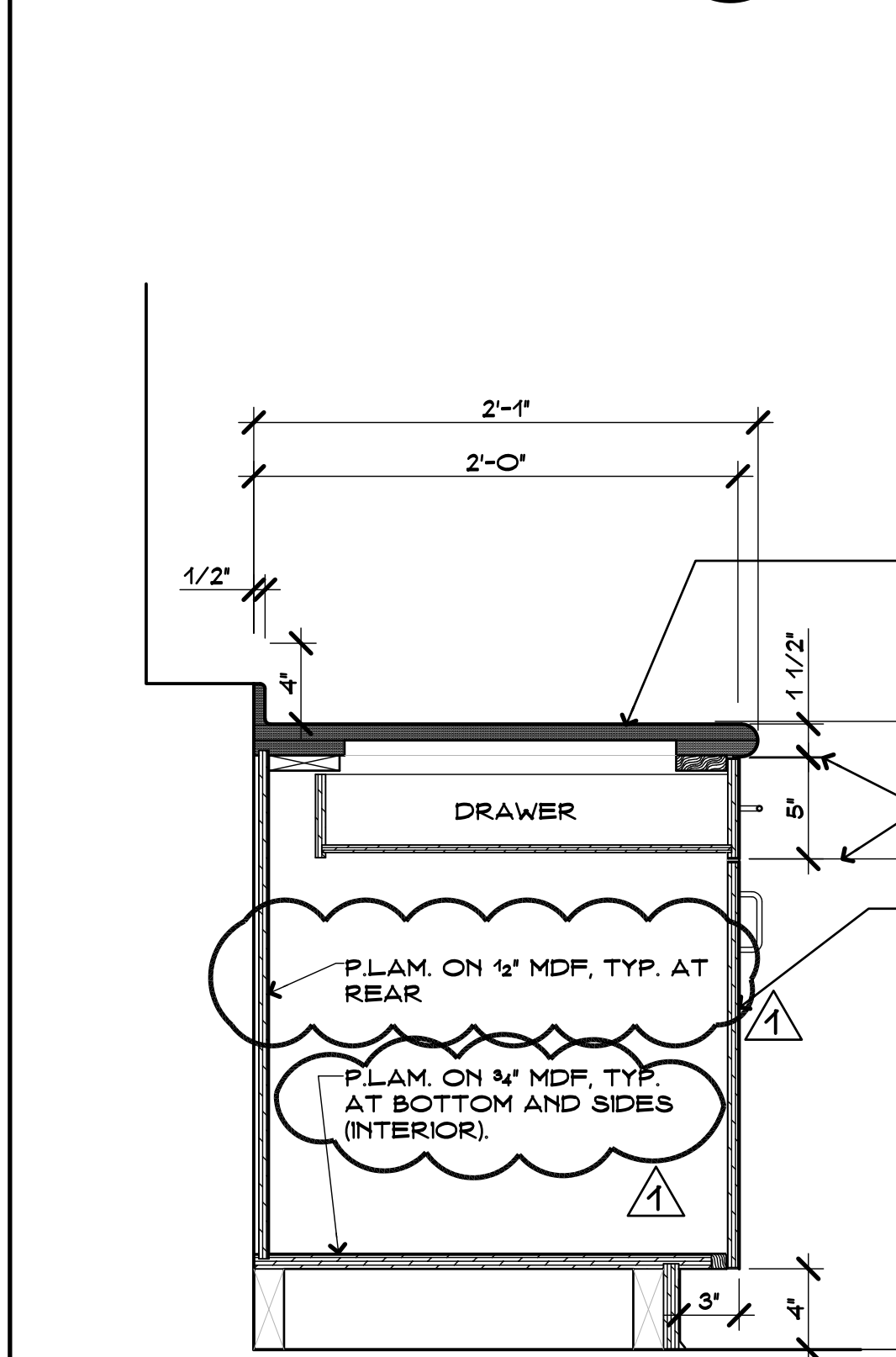
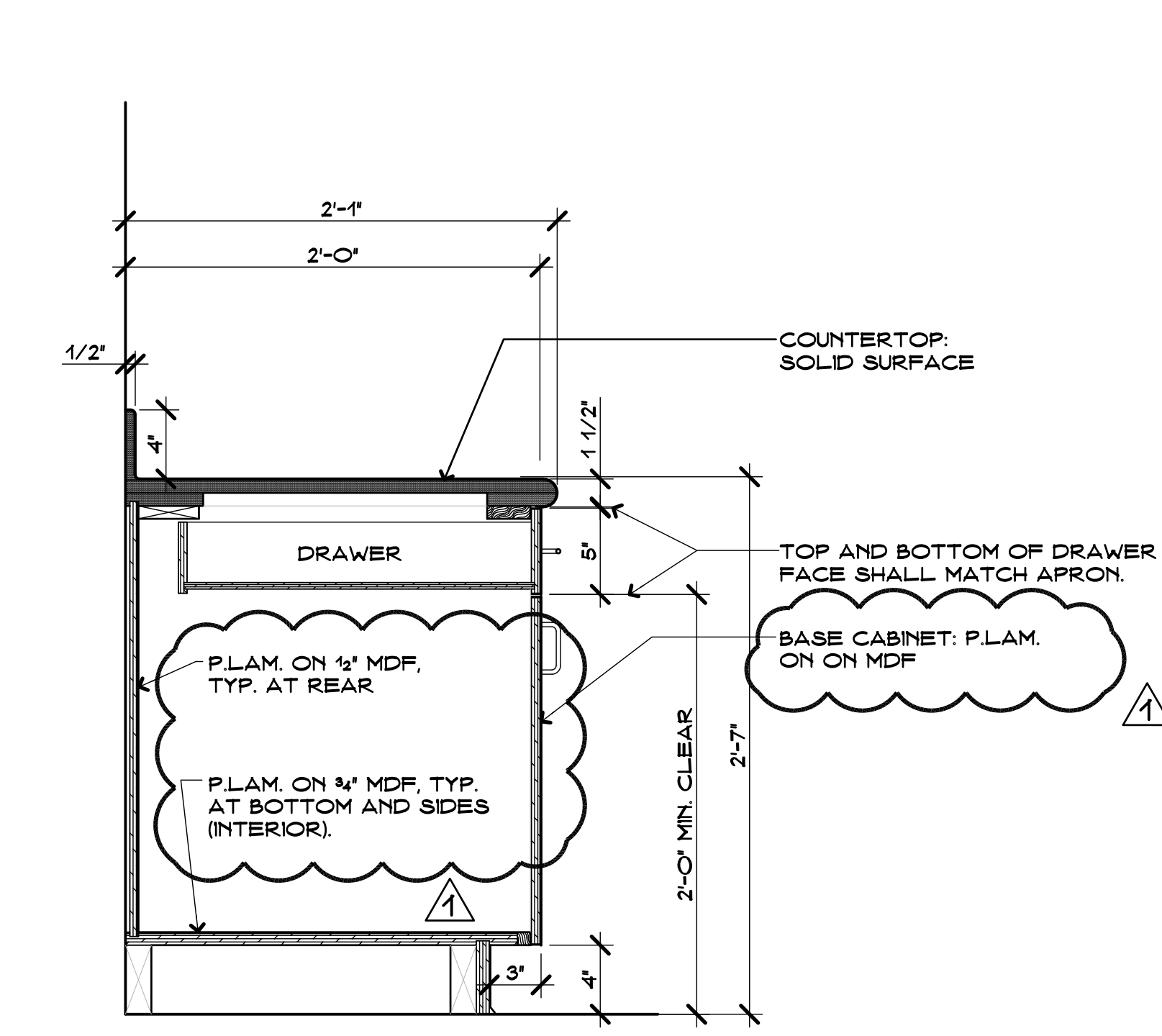
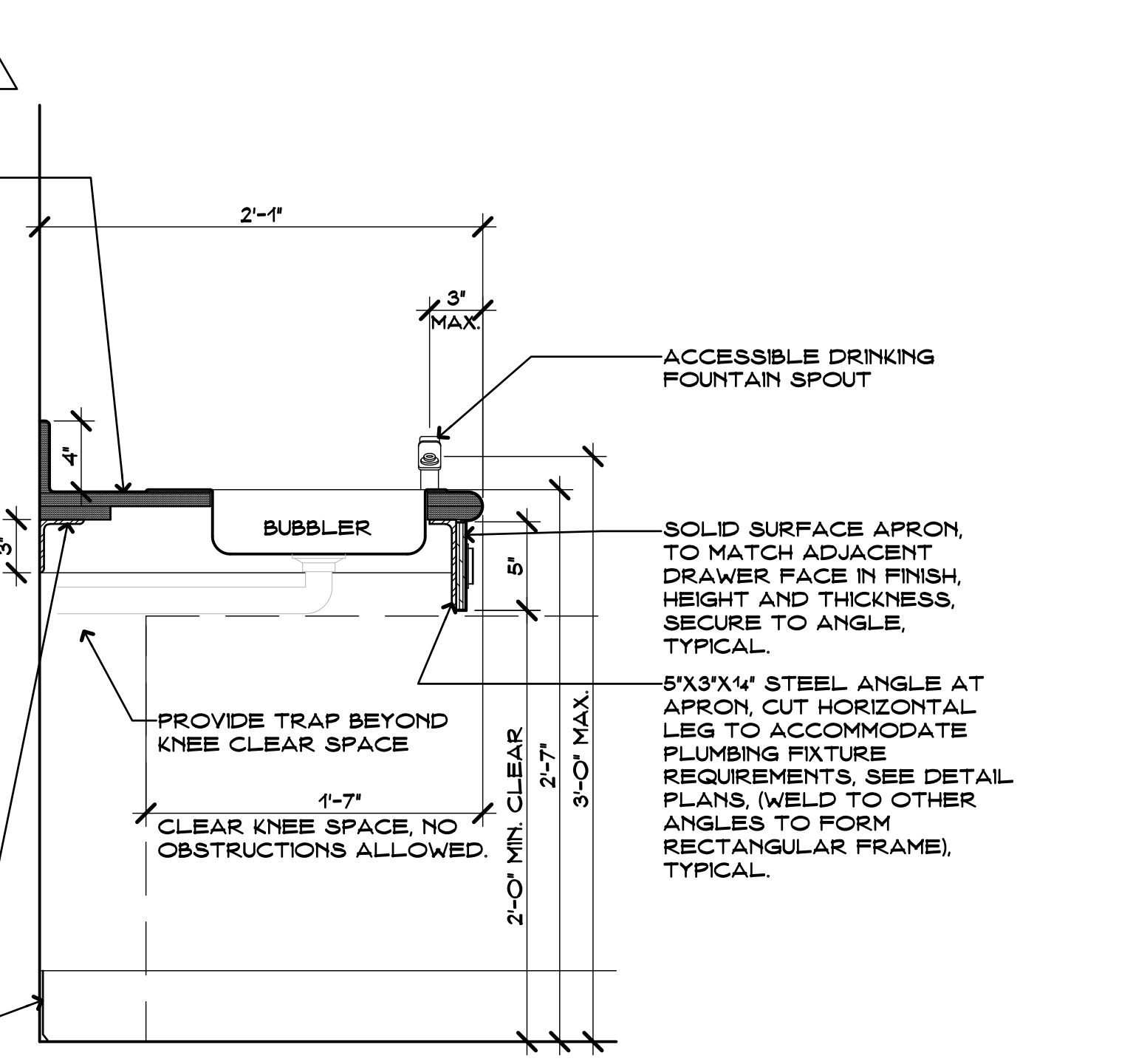
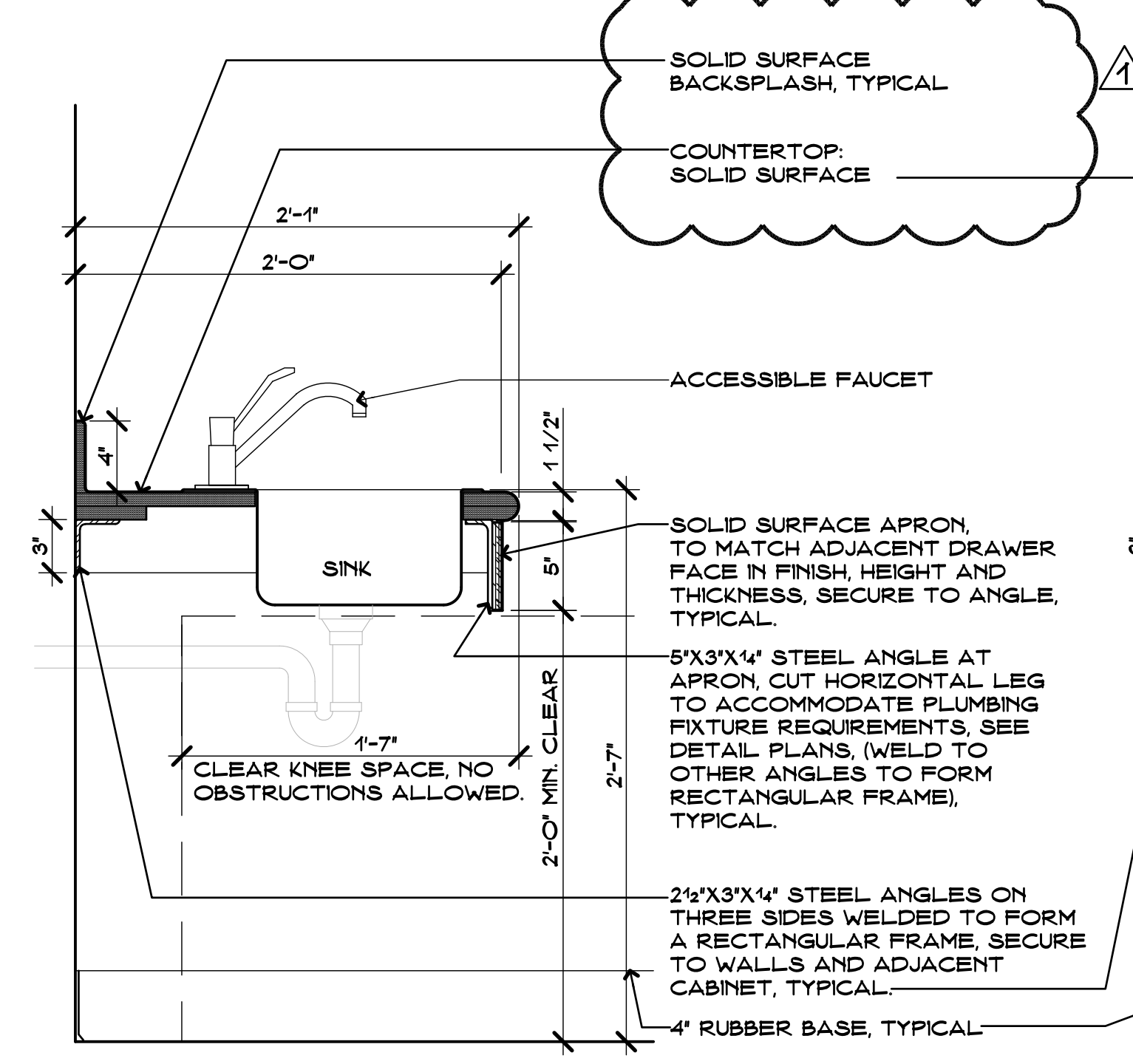
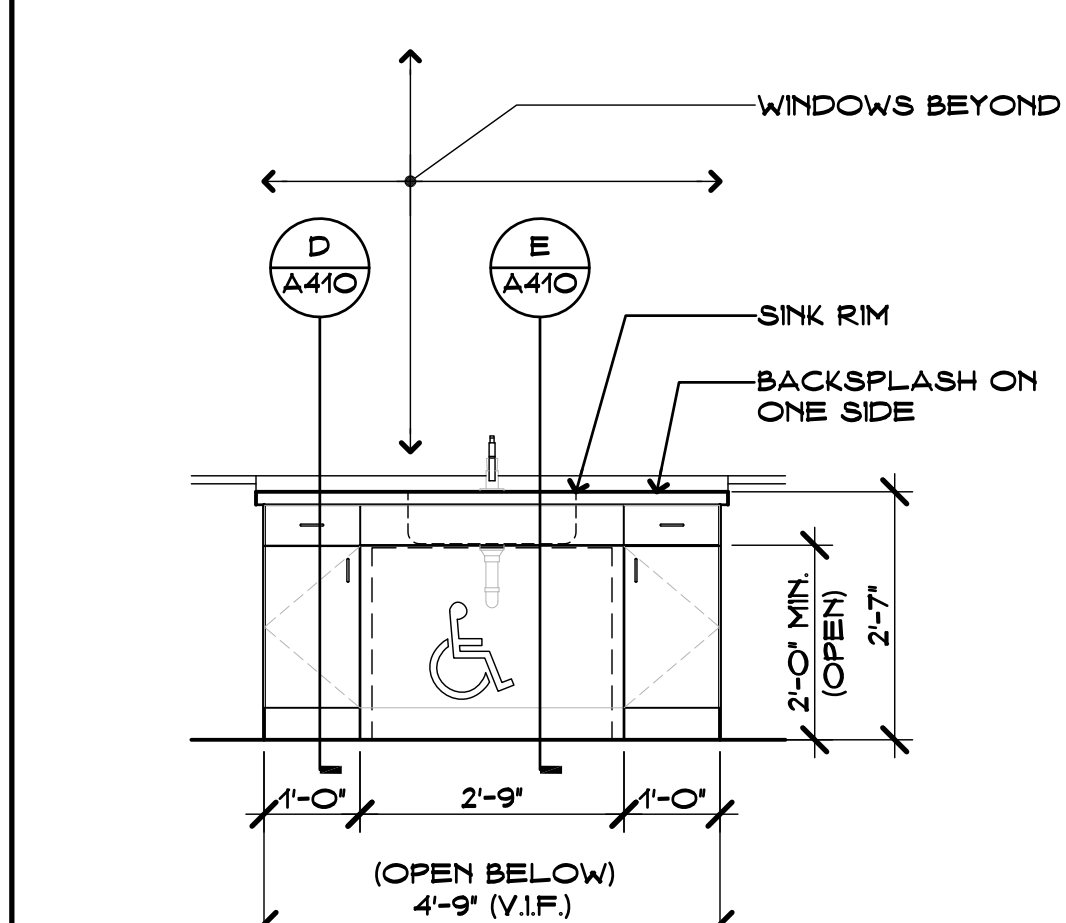


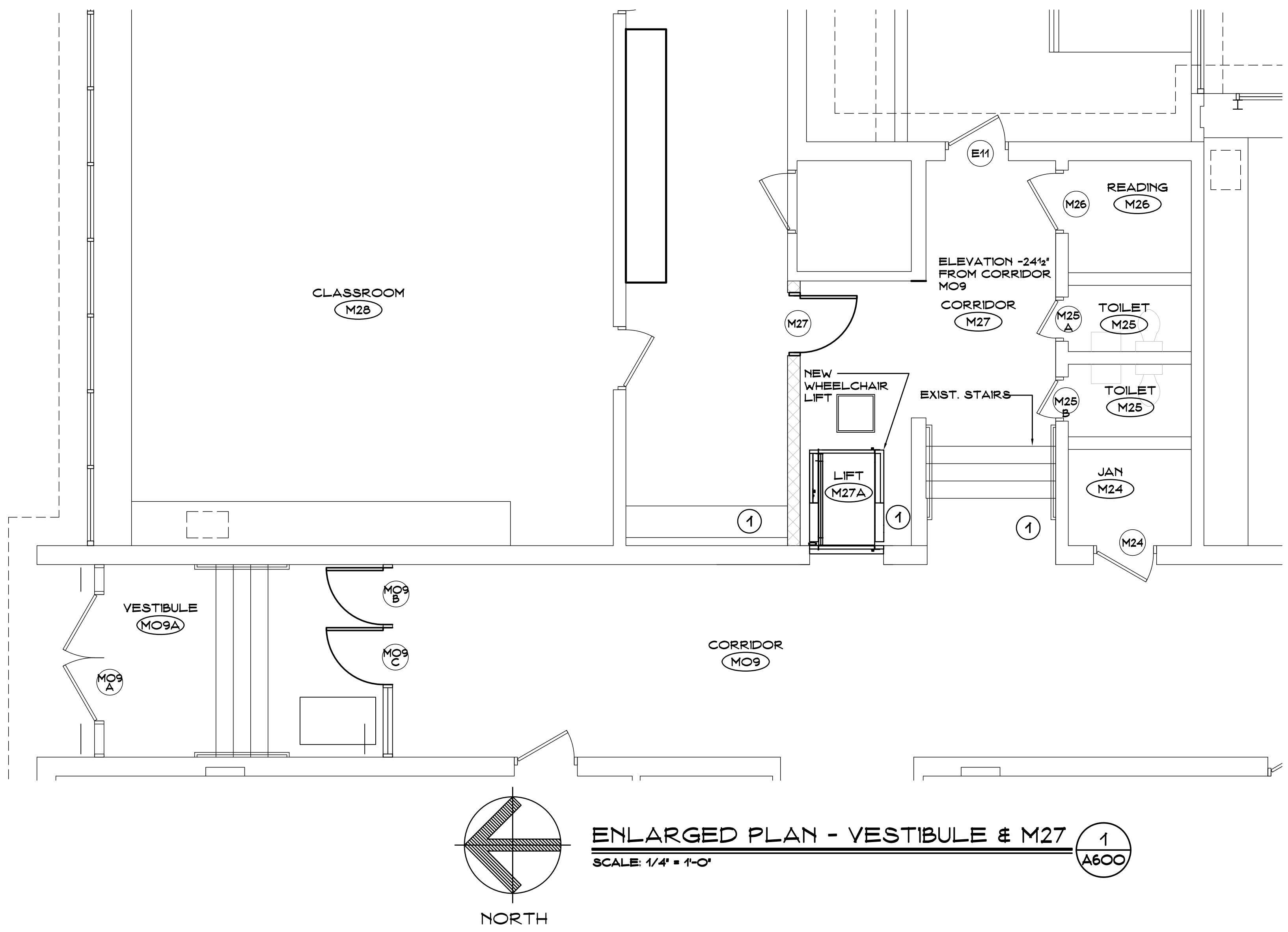
KEY PLAN SCALE: NONE



1 ENLARGED PLAN @ CLASSROOM SINK/BUBBLER FIXTURE
SCALE: 1" = 1'-0"

2 ENLARGED PLAN @ CLASSROOM SINK
SCALE: 1" = 1'-0"

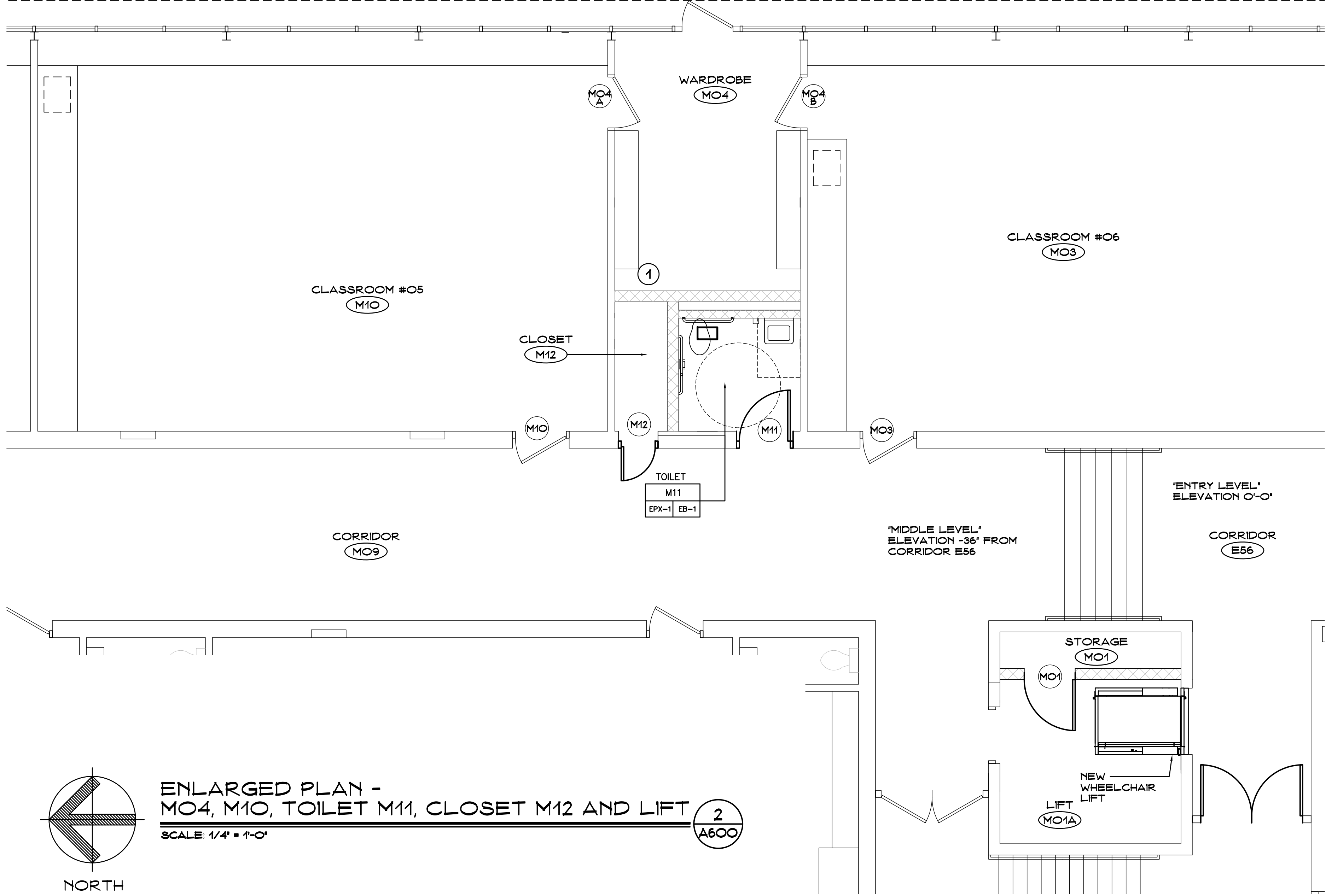




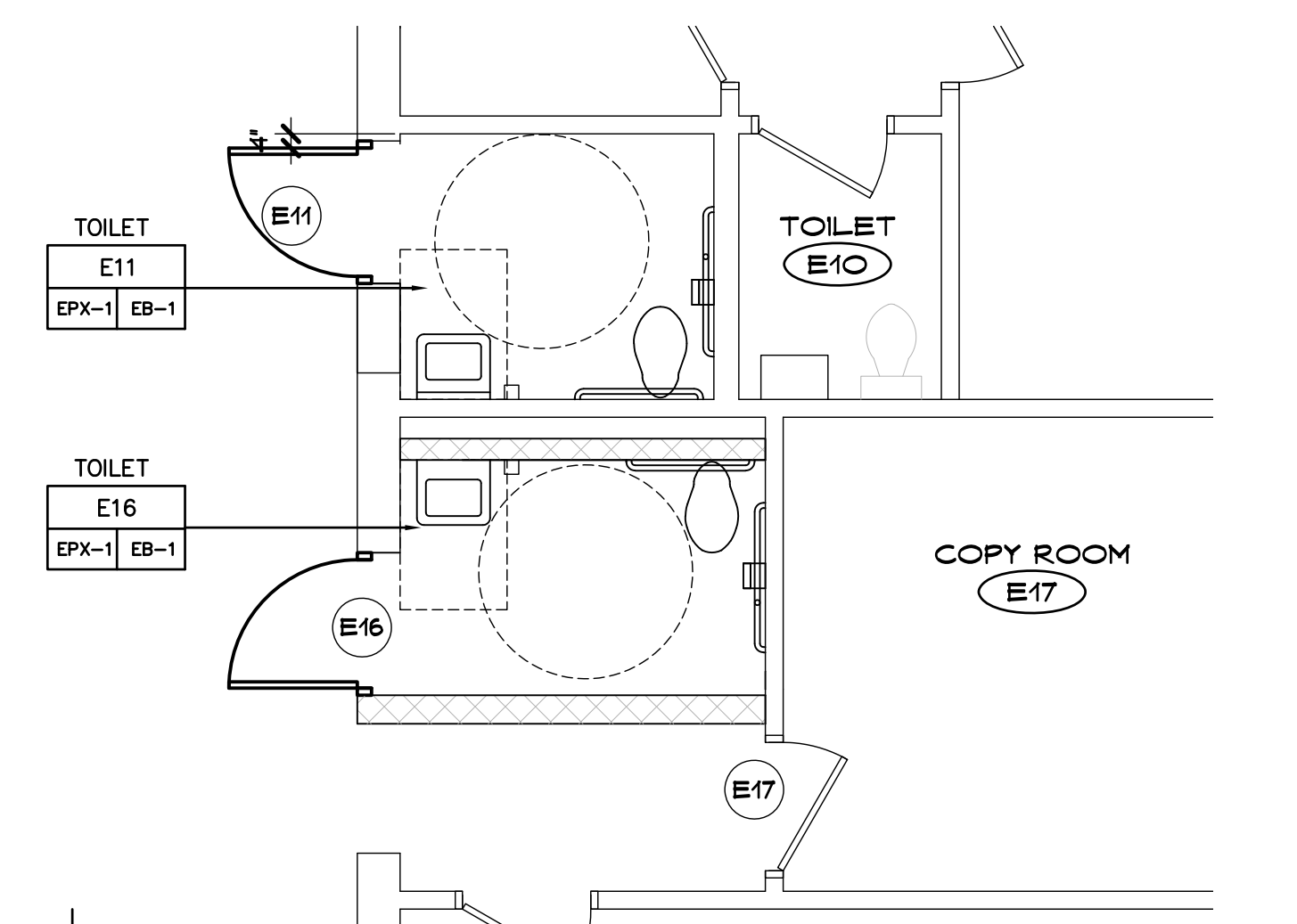
ENLARGED PLAN - VESTIBULE & M27
SCALE: 1/4" = 1'-0"
1
A600

- LEGEND**
- ACT - SUSPENDED ACOUSTICAL CEILING TILE AND GRID SYSTEM
 - EP - EPOXY PAINT
 - E.S. - EXPOSED STRUCTURE
 - E.T.R. - EXISTING TO REMAIN
 - EB - EPOXY BASE
 - EPX - EPOXY
 - P - PAINT
 - RB - RESILIENT BASE
 - VCT - VINYL COMPOSITION TILE

- GENERAL FINISH NOTES**
1. SEE FLOOR PLAN FOR LOCATIONS WHERE SMALL PORTIONS OF FLOOR AND/OR WALLS ARE BEING MODIFIED OR INFILLED WITH NEW FINISHES AS INDICATED.
 2. PAINT NEW WALLS AND AREAS AFFECTED BY THE NEW WORK. NEW PAINT SHALL EXTEND ON BOTH SIDES TO THE NEXT APPROPRIATE EXISTING VERTICAL JOINTS (FLOOR TO CEILING).
 3. SEE ALSO INTERIOR ELEVATIONS FOR CLARIFICATION OF EXTENT OF NEW FINISHES AND OTHER WORK REQUIRED.
 4. NEW CEILING SHALL MATCH EXISTING IN HEIGHT, V.I.F. FOR MECHANICAL EQUIPMENT TO REMAIN, SEE ALSO MECHANICAL DRAWINGS.
 5. ALL NEW HOLLOW METAL FRAMES SHALL BE PAINTED.
 6. ALL NEW WOOD DOOR SHALL BE FACTORY-FINISHED.
 7. PATCH AND/OR REPAIR ALL EXISTING FINISHES AND PROVIDE NEW FINISHES AS REQUIRED TO MATCH EXISTING FOR ALL DISTURBED AREAS.
 8. PROTECT ALL EXISTING FINISHES AND MATERIALS INTENDED TO REMAIN. DAMAGED MATERIALS AS A RESULT OF CONSTRUCTION SHALL BE REPAIRED OR REPLACED AS REQUIRED AT NO EXPENSE TO THE OWNER.

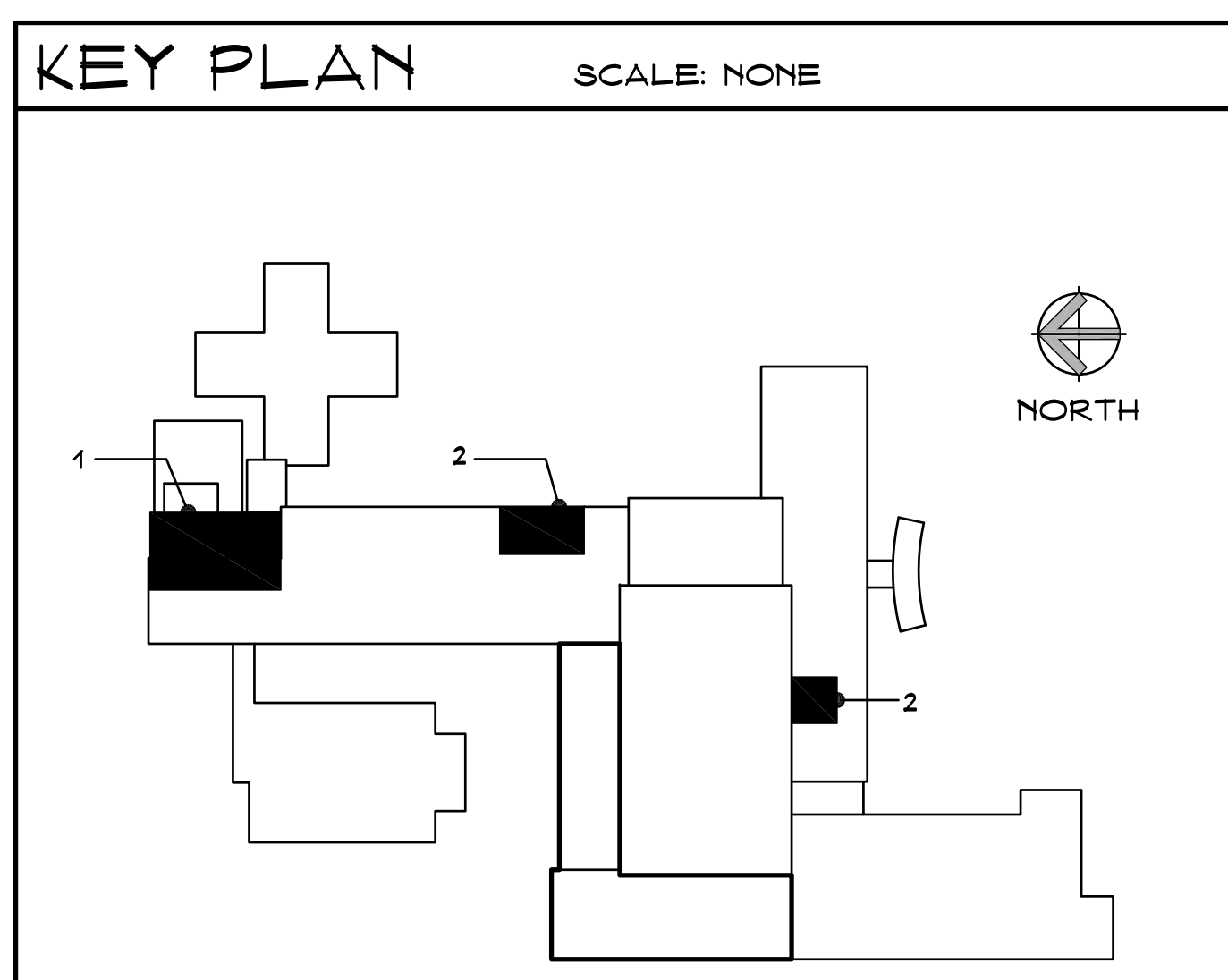


ENLARGED PLAN - M04, M10, TOILET M11, CLOSET M12 AND LIFT
SCALE: 1/4" = 1'-0"
2
A600



ENLARGED PLAN - E11 AND E16
SCALE: 1/4" = 1'-0"
3
A600

FINISH SCHEDULE								
ROOM NUMBER	ROOM TYPE	FLOOR FINISH	BASE FINISH	NORTH WALL	EAST WALL	SOUTH WALL	WEST WALL	CEILING FINISH
M01	STORAGE	VCT	RB	P	P	P	P	ACT-1
M01A	LIFT	VCT	RB	P	P	P	P	ACT-1
M11	TOILET ROOM	EPX	EB	EP	EP	EP	EP	ACT-2
E11	TOILET ROOM	EPX	EB	EP	EP	EP	EP	ACT-2
E16	TOILET ROOM	EPX	EB	EP	EP	EP	EP	ACT-2
E60	COPY ROOM	VCT	RB	P	P	P	P	ACT-2



KEY PLAN SCALE: NONE