

SEPTEMBER 28, 2018

**STATEWIDE REPLACEMENT OF OVERHEAD SIGN SUPPORTS
ON VARIOUS ROUTES AND REPLACE SIGN SUPPORT ON ROUTE I-91**

**FEDERAL AID PROJECT NO. N/A
STATE PROJECT NOS. 0170-3447 & 0148-0210**

STATEWIDE

ADDENDUM NO. 1

SPECIAL PROVISIONS

NEW SPECIAL PROVISIONS

The following Special Provisions are hereby added to the Contract:

- NOTICE TO CONTRACTOR – ATTRACTION SIGNING ALONG I-95
BETWEEN GROTON AND NORTH STONINGTON
- ITEM #1206023A – REMOVAL AND RELOCATION OF EXISTING SIGNS
- ITEM #1208932A – SIGN FACE - SHEET ALUMINUM (TYPE IV
RETROREFLECTIVE SHEETING)

REVISED SPECIAL PROVISIONS

The following Special Provisions are hereby deleted in their entirety and replaced with the attached like-named Special Provisions:

- CONTRACT TIME AND LIQUIDATED DAMAGES
- SECTION 1.08 – PROSECUTION AND PROGRESS
- ITEM #1208931A – SIGN FACE - SHEET ALUMINUM (TYPE IX
RETROREFLECTIVE SHEETING)

CONTRACT ITEMS
NEW CONTRACT ITEMS

<u>ITEM NO.</u>	<u>DESCRIPTION</u>	<u>UNIT</u>	<u>QUANTITY</u>
<u>1206023A</u>	<u>REMOVAL AND RELOCATION OF EXISTING SIGNS</u>	<u>L.S.</u>	<u>1</u>
<u>1208932A</u>	<u>SIGN FACE - SHEET ALUMINUM (TYPE IV RETROREFLECTIVE SHEETING)</u>	<u>S.F.</u>	<u>420</u>

REVISED CONTRACT ITEM

<u>ITEM NO.</u>	<u>DESCRIPTION</u>	<u>ORIGINAL QUANTITY</u>	<u>REVISED QUANTITY</u>
<u>1208931A</u>	<u>SIGN FACE - SHEET ALUMINUM (TYPE IX RETROREFLECTIVE SHEETING)</u>	<u>150 S.F.</u>	<u>1350 S.F.</u>

PLANS
NEW PLANS

The following Plan Sheets are hereby added to the Contract:

01.13.01.A1, 01.13.02.A1, 01.13.03.A1, 01.13.04.A1, 01.13.05.A1, 01.13.06.A1, 01.13.07.A1, 01.13.08.A1, 01.13.09.A1, 01.13.10.A1, 01.13.11.A1, 01.13.12.A1, 01.13.13.A1, 01.13.14.A1, 01.13.15.A1, 01.13.16.A1, 01.13.17.A1, 01.13.18.A1, 01.13.19.A1, 01.13.20.A1, 01.13.21.A1, 01.13.22.A1, 01.13.23.A1, and 01.13.24.A1.

REVISED PLAN

The following Plan Sheet is hereby deleted and replaced with the like-numbered Plan Sheet:

01.02.01.A1.

The Bid Proposal Form has been revised to reflect these changes.

The Detailed Estimate Sheets do not reflect these changes.

There will be no change in the number of calendar days due to this Addendum.

The foregoing is hereby made a part of the contract.

**NOTICE TO CONTRACTOR – ATTRACTION SIGNING ALONG I-95
BETWEEN GROTON AND NORTH STONINGTON**

Subset No. 13 of the Contract Plans is for the installation of sheet aluminum attraction signs on existing extruded aluminum signs and post mounted trail blazer signs for various attractions along I-95 in the towns of Groton, Stonington and North Stonington. The attractions previously had attraction signs removed under a previous project. It is imperative that these attraction signs be installed as soon as possible under this project. The Contractor is hereby notified that the installation, completion and acceptance of these attraction signs should proceed as soon as possible. The prosecution of work is described in the special provision Article 1.08.03.

ITEM #1206023A – REMOVAL AND RELOCATION OF EXISTING SIGNS

Section 12.06 is supplemented as follows:

Article 12.06.01 – Description is supplemented with the following:

Work under this item shall consist of the removal and/or relocation of designated side-mounted extruded aluminum and sheet aluminum signs, sign posts, sign supports, and foundations where indicated on the plans or as directed by the Engineer. Work under this item shall also include furnishing and installing new sign posts and associated hardware for signs designated for relocation.

Article 12.06.03 – Construction Methods is supplemented with the following:

The Contractor shall take care during the removal and relocation of existing signs, sign posts, and sign supports that are to be relocated so that they are not damaged. Any material that is damaged shall be replaced by the Contractor at no cost to the State.

Foundations and other materials designated for removal shall be removed and disposed of by the Contractor as directed by the Engineer and in accordance with existing standards for Removal of Existing Signing.

Sheet aluminum signs designated for relocation are to be re-installed on new sign posts.

Article 12.06.04 – Method of Measurement is supplemented with the following:

Payment under Removal and Relocation of Existing Signs shall be at the contract lump sum price which shall include all extruded aluminum and sheet aluminum signs, sign posts, and sign supports designated for relocation, all new sign posts and associated hardware for signs designated for relocation, all extruded aluminum signs, sheet aluminum signs, sign posts and sign supports designated for scrap, and foundations and other materials designated for removal and disposal, and all work and equipment required.

Article 12.06.05 – Basis of Payment is supplemented with the following:

This work will be paid for at the contract lump sum price for “Removal and Relocation of Existing Signs” which price shall include relocating designated extruded aluminum and sheet aluminum signs, sign posts, and sign supports, providing new posts and associated hardware for relocated signs, removing and disposing of foundations and other materials, and all equipment, material, tools and labor incidental thereto. This price shall also include removing, loading, transporting, and unloading of extruded aluminum signs, sheet aluminum signs, sign posts, and sign supports designated for scrap and all equipment, material, tools and labor incidental thereto.

<u>Pay Item</u>	<u>Pay Unit</u>
Removal and Relocation of Existing Signs	L.S.

ITEM #1208931A – SIGN FACE - SHEET ALUMINUM (TYPE IX RETROREFLECTIVE SHEETING)

ITEM #1208932A – SIGN FACE - SHEET ALUMINUM (TYPE IV RETROREFLECTIVE SHEETING)

Section 12.08 is supplemented and amended as follows:

12.08.01—Description:

Add the following:

This item shall also include field testing of metal sign base posts as directed by the Engineer.

Sign Face – Sheet Aluminum is supplemented with the sign details that follow.

12.08.03—Construction Methods:

Delete the last sentence and add the following:

Metal sign base posts shall be whole and uncut. Sign base post embedment and reveal lengths shall be as shown on the plans. The Contractor shall drive the metal sign base posts by hand tools, by mechanical means or by auguring holes. If an obstruction is encountered while driving or placing the metal sign base post, the Contractor shall notify the Engineer who will determine whether the obstruction shall be removed, the sign base post or posts relocated, or the base post installation in ledge detail shall apply. Backfill shall be thoroughly tamped after the posts have been set level and plumb.

Field Testing of Metal Sign Posts: When the sign installations are complete, the Contractor shall notify the Engineer the Project is ready for field testing. Based on the number of posts in the Project, the Engineer will select random sign base posts which shall be removed by the Contractor for inspection and measurement by the Engineer. After such inspection is completed at each base post location, the Contractor shall restore or replace such portions of the work to the condition required by the Contract. Refer to the table in 12.08.05 for the number of posts to be field tested.

12.08.04—Method of Measurement:

Add the following:

The work required to expose and measure sign base post length and embedment depth using field testing methods, and restoration of such work, will not be measured for payment and shall be included in the general cost of the work.

12.08.05—Basis of Payment:

Replace the entire Article with the following:

This work will be paid for at the Contract unit price per square foot for “Sign Face - Sheet Aluminum” of the type specified complete in place, adjusted by multiplying by the applicable Pay Factor listed in the table below. The price for this work shall include the completed sign, metal sign post(s), span-mounted sign brackets and mast arm-

mounted brackets, mounting hardware, including reinforcing plates, field testing, restoration and replacement of defective base post(s), and all materials, equipment, and work incidental thereto.

Pay Factor Scale: Work shall be considered defective whenever the base post length or base post embedment depth is less than the specified length by more than 2 inches. If the number of defects results in rejection, the Contractor shall remove and replace all metal sign base posts on the Project, at no cost to the Department.

Number of Posts to be Tested and Pay Factors (Based on Number of Defects)

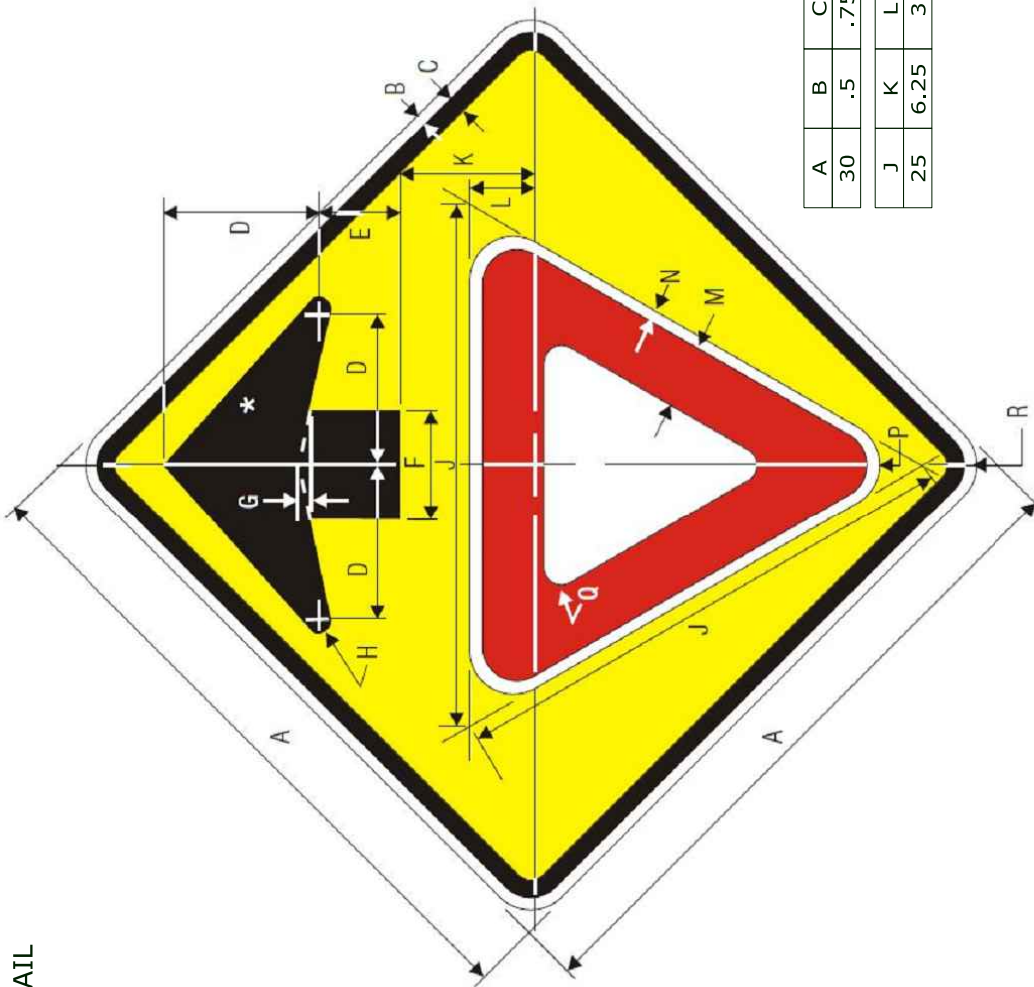
Number of Posts in Project =>	51-100	101-250	251-1000	>1000
Sample Size=>	5 Posts	10 Posts	40 Posts	60 Posts
0 Defects	1.0	1.0	1.025	1.025
1 Defect	0.9	0.95	0.975	0.983
2 Defects	Rejection	0.9	0.95	0.967
3 Defects	Rejection	Rejection	0.925	0.95
4 Defects	Rejection	Rejection	0.9	0.933
5 Defects	Rejection	Rejection	Rejection	0.917
6 Defects	Rejection	Rejection	Rejection	0.9
7 or more Defects	Rejection	Rejection	Rejection	Rejection

Note: Projects with 50 or fewer posts will not include field testing

SIGN DETAIL

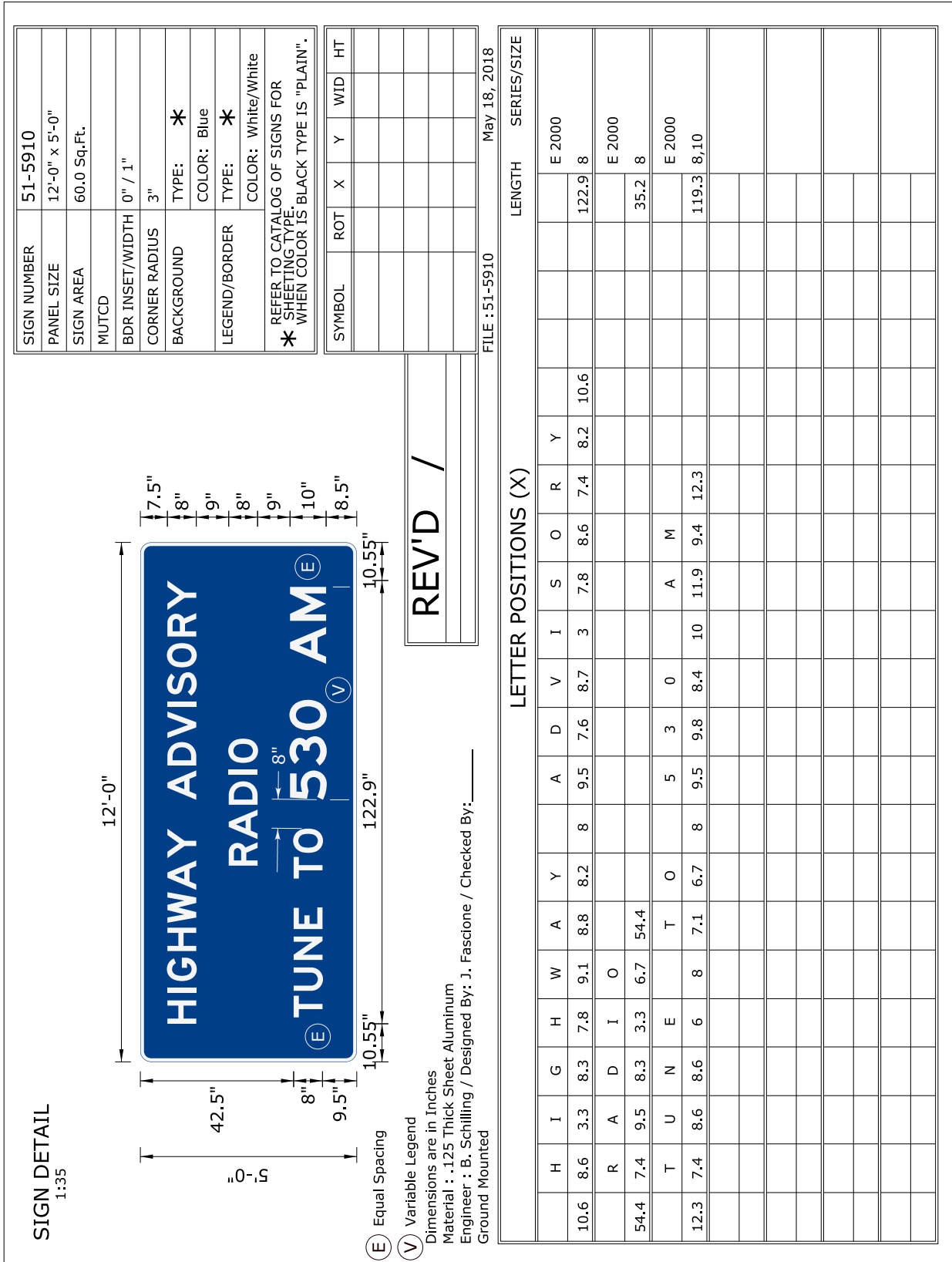
SIGN NUMBER	410504
SIGN PANEL	2'-6" x 2'-6"
TOTAL (Sq.ft.)	6.25
MUTCD	W3-2
BDR INSET/WIDTH	0.5" / 0.75"
CORNER RADIUS	1.875"
BACKGROUND	TYPE: * COLOR: Yellow
LEGEND/BORDER	TYPE: * COLOR: Black/Black
* REFER TO CATALOG OF SIGNS FOR SHEETING TYPE. WHEN COLOR IS BLACK TYPE IS "PLAIN".	
REV'D /	

PLOTTED :\$DATE\$



A	B	C	D	E	F	G	H
30	.5	.75	7.5	3.75	5	.625	.313
J	K	L	M	N	P	Q	R
25	6.25	3	3.375	.5	1.25	.625	1.875

Dimensions are in inches.
 Material : .080 Thk. Sheet Aluminum
 Side Mounted
 Location : N/A
 Engineer : B. Schilling / Designed By : J. Fascione / Checked By :



STATE OF CONNECTICUT
DEPARTMENT OF TRANSPORTATION
BUR. OF ENGINEERING & HIGHWAY OPERATIONS
DIVISION OF TRAFFIC ENGINEERING


SIGN NUMBER: **387-41-5905**

BORDER WIDTH - 25
CORNER RADIUS - 37.

Sq. m.
SIGN EXIT TOTAL
1.62
1.62

BACKGROUND TYPE: I or II
COLOR: YELLOW

LEGEND & BORDER TYPE: I or II
COLOR: BLACK



URGENT MESSAGE WHEN FLASHING

3600mm
450mm

Y
0.0
X

SIGN TO BE SURMOUNTED WITH
51-5910 AND 51-5912.

APPROVED *[Signature]*

DESIGNED G.M.F. 5/98 CHECKED *[Signature]*

DIMENSIONS IN mm
COORDINATES ARE TO LOWER LEFT CORNERS
MATERIAL - 3mm THK. SHEET ALUMINUM

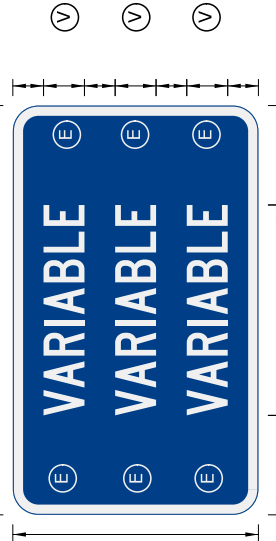
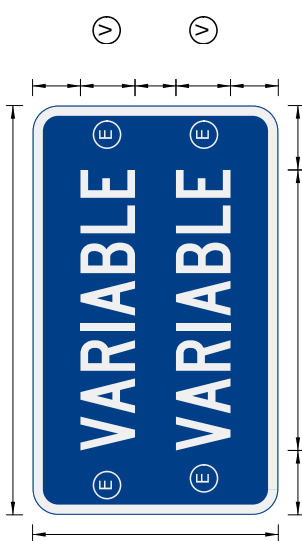
Y		LETTER POSITIONS (X)										HT	LEN									
FONT		U	R	G	E	N	T	M	E	S	A	G	E	W	H	E	N					
163	D	294	410	519	635	736	845	1048	1176	1277	1387	1496	1626	1742	1944	2079	2195	2296			125	3012
163	D	2507	2608	2693	2823	2939	3055	3105	3220												125	3012

BUSINESS PANEL FOR

SIGN DETAIL
1:12

NOTES FOR NON-LOGO BUSINESS PANEL
BACKGROUND COLORS :
- BROWN : AMUSEMENT PARK, CULTURAL CENTER, RECREATIONAL AREA, MUSEUM, ETC.
- BLUE : MAJOR SHOPPING CENTER, ETC.
- GREEN : COLLEGE, UNIVERSITY, ETC.
BACKGROUND COLOR MUST BE SPECIFIED NEXT TO SIGN # ON PLAN.

NOTES FOR LOGO BUSINESS PANEL
- SUBMIT TO THE DIVISION OF TRAFFIC ENGINEERING FOR REVIEW AND APPROVAL.



- (E) VARIABLE LEGEND OR LOGO TO FIT 30" x 18" SIGN
- (V) DIMENSIONS ARE IN INCHES
- MATERIAL : .040 THK.SHEET ALUMINIUM
- OVERLAY PANEL TO BE USED WITH SIGN SUPPORT NO. N/A
- LOCATION : N/A
- ENGINEER : B. SCHILLING DESIGNED BY : J. FASCIONE CHECKED BY : _____

SIGN NUMBER	51-6749
SIGN PANEL	15.0
EXIT CROWN	--
TOTAL (Sq.Ft.)	15.0
BDR INSET/WIDTH	0" / 0.75"
CORNER RADIUS	2.25"
BACKGROUND FOR NON-LOGO BUSINESS PANEL	TYPE: *
LEGEND/BORDER FOR NON-LOGO BUSINESS PANEL	COLOR: Variable
BACKGROUND FOR LOGO BUSINESS PANEL	TYPE: *
LEGEND/BORDER FOR LOGO BUSINESS PANEL	COLOR: White/White
BACKGROUND FOR LOGO BUSINESS PANEL	TYPE: *
LEGEND/BORDER FOR LOGO BUSINESS PANEL	COLOR: Variable
BACKGROUND FOR LOGO BUSINESS PANEL	TYPE: *
LEGEND/BORDER FOR LOGO BUSINESS PANEL	COLOR: Variable

* REFER TO CATALOG OF SIGNS FOR SHEETING TYPE. WHEN COLOR IS BLACK TYPE IS "PLAIN".

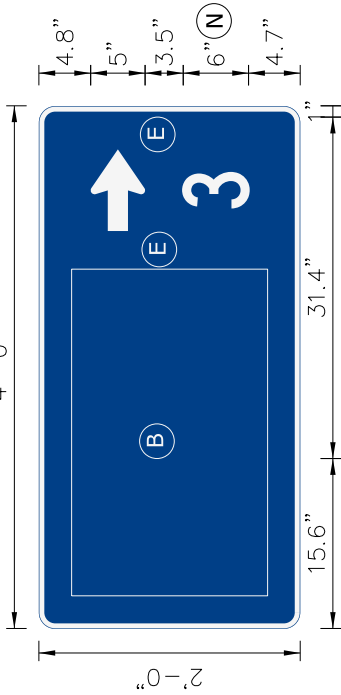
SYMBOL	ROT	X	Y	WID	HT

REV'D 6/14
ADDED NOTES FOR LOGO PANEL AND UPDATED BORDER FOR LOGO PANEL.

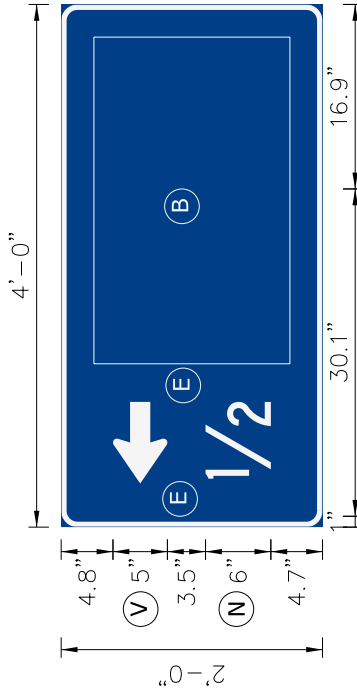
PLOTTED .6/20/2018

SIGN DETAIL
1:15

FOR RAMPS
4'-0"



LETTER POSITIONS (X)		LENGTH	SERIES/SIZE
3			C 2000
38.6	3.4	6.1	3.4 6



LETTER POSITIONS (X)		LENGTH	SERIES/SIZE
1/2			C 2000
4.5	7.1	36.5	7.1 6

DIMENSIONS ARE IN INCHES
MATERIAL : .100 THK. SHEET ALUMINUM
SIDE MOUNTED
SIGN SUPPORT NO.
LOCATION : N/A
ENGINEER : B. SCHILLING DESIGNED BY : J. FASCIONE CHECKED BY : _____

NOTE :
FOR CONVENTIONAL HIGHWAY
SIGN SEE 51-6755.

SIGN NUMBER	51-6752
SIGN PANEL	8.0
EXIT CROWN	--
TOTAL (Sq.Ft.)	8.0
BDR INSET/WIDTH	0" / 0.5"
CORNER RADIUS	1.5"
BACKGROUND	TYPE: * COLOR: Blue
LEGEND/BORDER	TYPE: * COLOR: White/White
* REFER TO CATALOG OF SIGNS FOR SHEETING TYPE. WHEN COLOR IS BLACK TYPE IS "PLAIN".	

ARROW & NUMBER ON RIGHT

SYMBOL	ROT	X	Y	WID	HT
AR_Type D	270	36.5	14.3	5	7.5
BUSINESS	0	3	3	30	18

ARROW & NUMBER ON LEFT

SYMBOL	ROT	X	Y	WID	HT
AR_Type D	270	4	14.3	5	7.5
BUSINESS	0	15	3	30	18

REV'D 07/15

ADDED NOTE N AND REVISED NOTE V

- (B) BUSINESS PANEL (51-6753).
- (E) EQUAL SPACING FOR ARROW AND NUMBER (DISTANCE).
- (N) VARIABLE NUMBER (DISTANCE).
- (V) VARIABLE ARROW (DIRECTION).

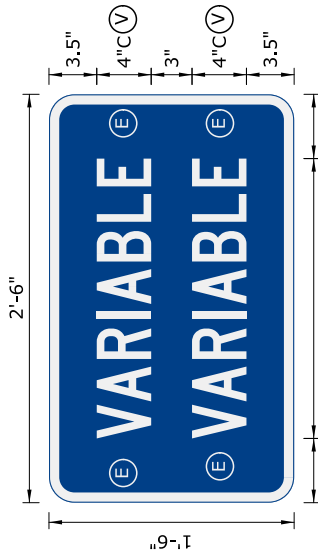
51-6752 SUBMOUNTED BELOW 51-6751.

PLOTTED : 6/20/2018

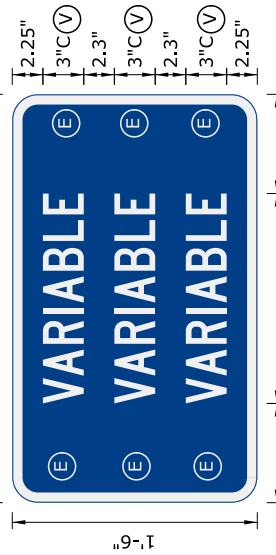
SIGN DETAIL
1:12

**BUSINESS PANEL FOR
RAMPS & CONVENTIONAL
ROADWAYS**

2 LINES USE 4" B OR C LETTERS.



3 LINES USE 3" B OR C LETTERS.



NOTES FOR NON-LOGO BUSINESS PANEL

BACKGROUND COLORS :

- BROWN : AMUSEMENT PARK, CULTURAL CENTER, RECREATIONAL AREA, MUSEUM, ETC.
- BLUE : MAJOR SHOPPING CENTER, ETC.
- GREEN : COLLEGE, UNIVERSITY, ETC.

BACKGROUND COLOR MUST BE SPECIFIED NEXT TO SIGN # ON PLAN.

NOTES FOR LOGO BUSINESS PANEL

- SUBMIT TO THE DIVISION OF TRAFFIC ENGINEERING FOR REVIEW AND APPROVAL.

SIGN NUMBER	51-6753
SIGN PANEL	3.75
EXIT CROWN	--
TOTAL (Sq.Ft.)	3.75
BDR INSET/WIDTH	0" / 0.5"
CORNER RADIUS	1.5"
BACKGROUND FOR NON-LOGO BUSINESS PANEL	TYPE: * COLOR: Variable
LEGEND/BORDER FOR NON-LOGO BUSINESS PANEL	TYPE: * COLOR: White/White
BACKGROUND FOR LOGO BUSINESS PANEL	TYPE: * COLOR: Variable
LEGEND/BORDER FOR LOGO BUSINESS PANEL	TYPE: * COLOR: Variable
* REFER TO CATALOG OF SIGNS FOR SHEETING TYPE. WHEN COLOR IS BLACK TYPE IS "PLAIN".	

SYMBOL	ROT	X	Y	WID	HT

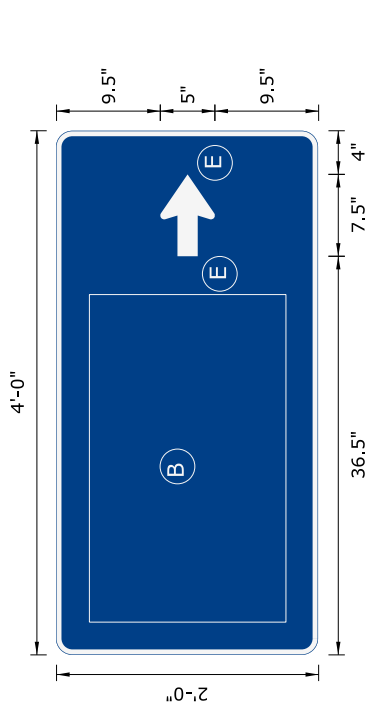
REV'D 6/14
ADDED NOTES FOR LOGO PANEL AND
UPDATED BORDER FOR LOGO PANEL.

PLOTTED :6/20/2018

(E) VARIABLE LEGEND OR LOGO TO FIT 30" x 18" SIGN
 (V) DIMENSIONS ARE IN INCHES
 MATERIAL : .040 THK.SHEET ALUMINIUM
 OVERLAY PANEL TO BE USED WITH 51-6752 AND 51-6755
 SIGN SUPPORT NO. N/A
 LOCATION : N/A
 ENGINEER : B. SCHILLING DESIGNED BY : J. FASCIONE CHECKED BY : _____

SIGN NUMBER	51-6755
SIGN PANEL	8.0
EXIT CROWN	--
TOTAL (Sq.Ft.)	8.0
BDR INSET/WIDTH	0" / 0.5"
CORNER RADIUS	1.5"
BACKGROUND	TYPE: * COLOR: Blue
LEGEND/BORDER	TYPE: * COLOR: White/White
* REFER TO CATALOG OF SIGNS FOR SHEETING TYPE, WHEN COLOR IS BLACK TYPE IS "PLAIN".	

FOR CONVENTIONAL ROADWAYS



ARROW ON RIGHT

SYMBOL	ROT	X	Y	WID	HT
AR_Type D	270	36.5	9.5	5	7.5
BUSINESS	0	3	3	30	18

ARROW ON LEFT

SYMBOL	ROT	X	Y	WID	HT
AR_Type D	270	4	9.5	5	7.5
BUSINESS	0	15	3	30	18

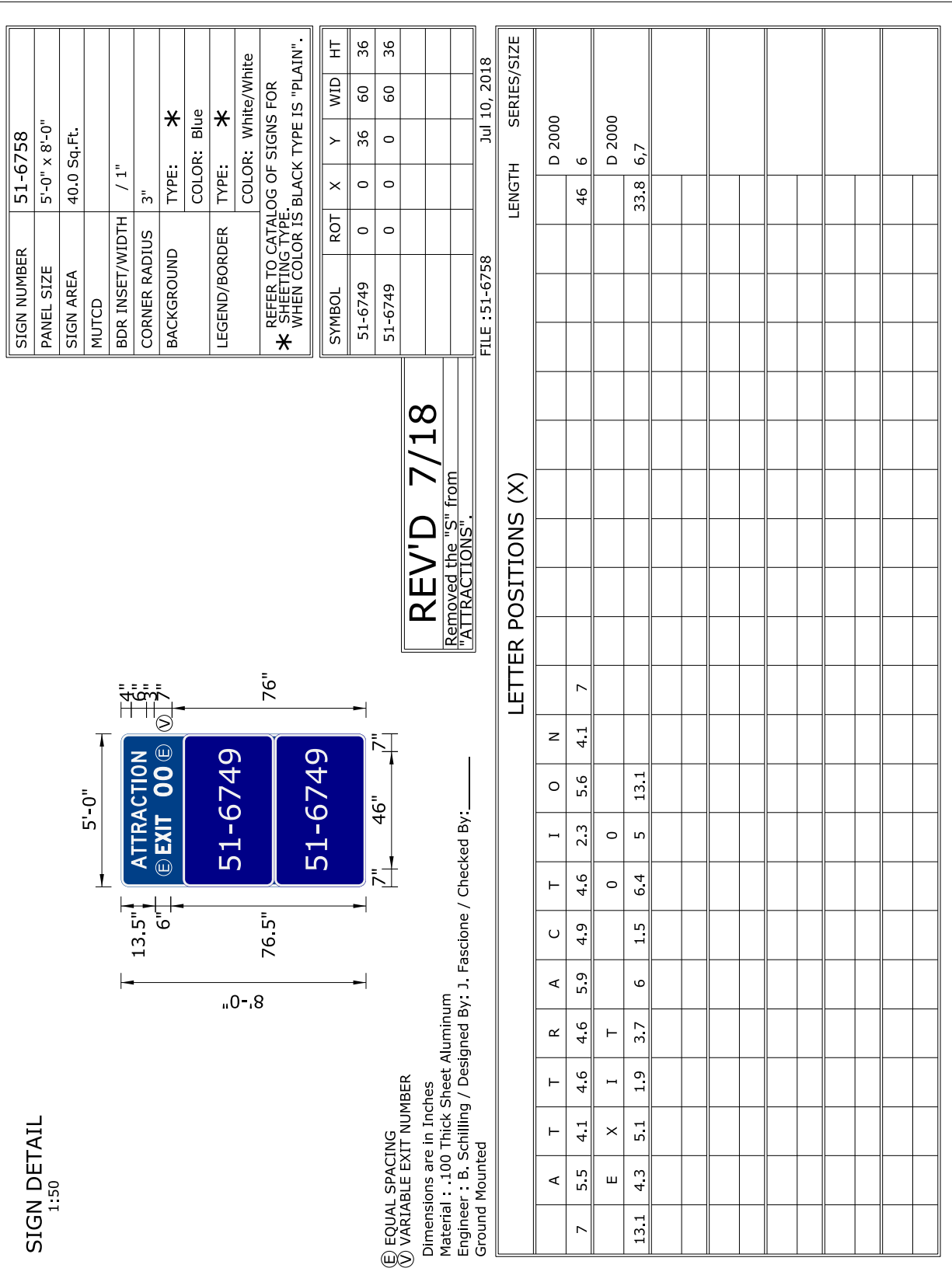
REV'D /

NOTE :
FOR RAMP SIGN SEE 51-6752.

- (B) BUSINESS PANEL (51-6753).
- (E) EQUAL SPACING FOR ARROW.
- (V) VARIABLE ARROW (DIRECTION).

DIMENSIONS ARE IN INCHES
 MATERIAL : .100 THK.SHEET ALUMINUM
 SIDE MOUNTED
 SIGN SUPPORT NO.
 LOCATION : N/A
 ENGINEER : B. SCHILLING DESIGNED BY : J. FASCIONE CHECKED BY : _____

PLOTTED : 6/20/2018



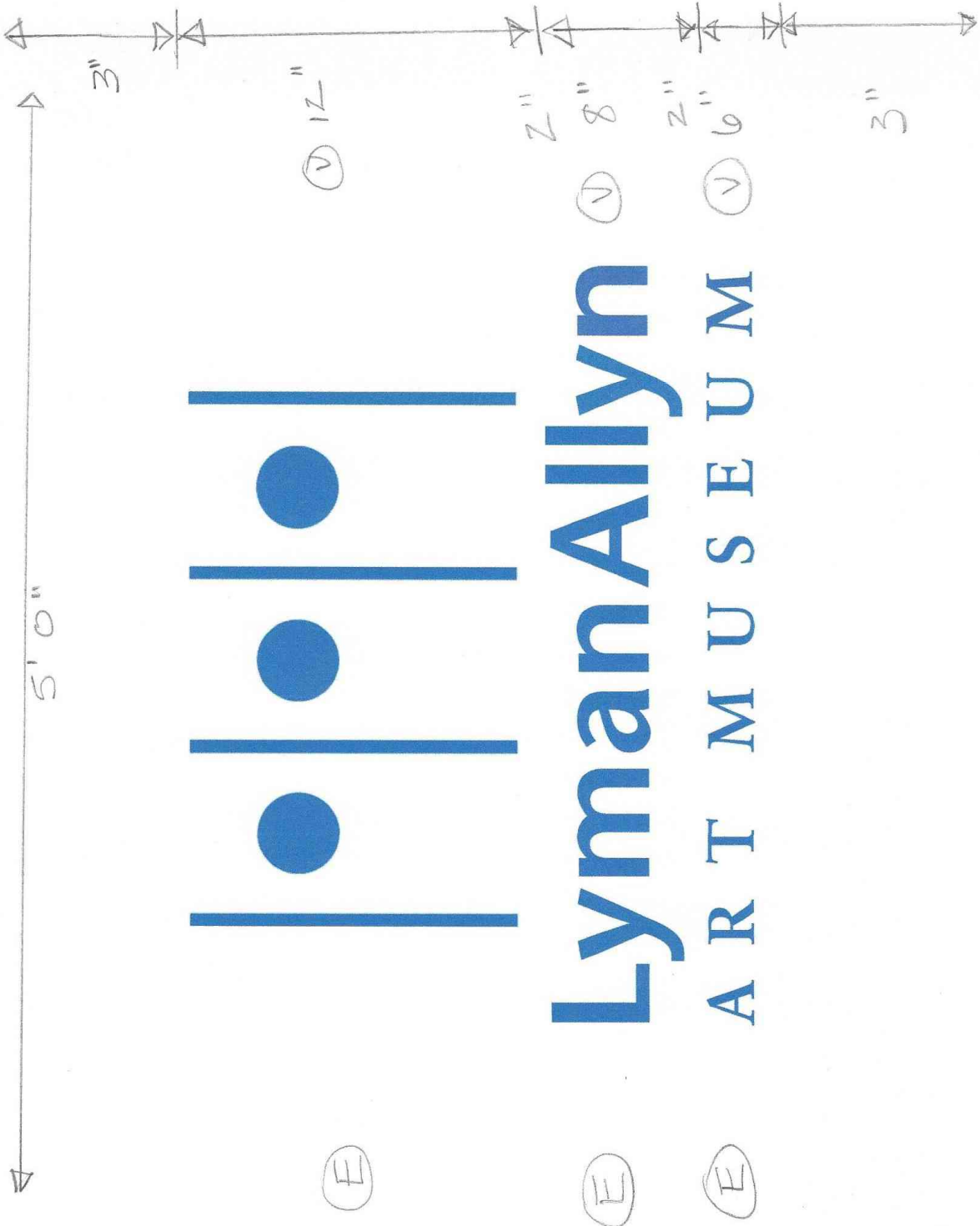
The following is a list of Attraction Sign Panels 51-6749 and 51-6753 regarding legend, detail type, and color. General Note No. 24 on Sheet TR-02 states that attraction panels using a custom logo have been noted with “#” on the panel on the design plans. For attraction panels using the typical DOT Standard Detail, all legend shall be uppercase with the exception of UConn Avery Point, which shall be fabricated as shown below. Attractions 19-25 may be fabricated by digital printing using the custom sign details attached to this special provision.

Legend	Detail	Color	Legend	Detail	Color	Legend	Detail	Color
1 COAST GUARD ACADEMY	Standard	Green	9 FIELDS OF FIRE	Standard	Brown	17 BURLINGAME STATE PARK	Standard	Brown
2 OCEAN BEACH PARK	Standard	Brown	10 HISTORIC MYSTIC DOWNTOWN/DRAWBRIDGE	Standard	Brown	18 SHOPPING MALL	Standard	Blue
3 FORT TRUMBULL STATE PARK	Standard	Brown	11 OLDE MISTICK VILLAGE SHOPES	Standard	Brown	19 Mitchell College	Custom	Custom
4 NATHAN HALE SCHOOLHOUSE	Standard	Brown	12 MYSTIC MUSEUM OF ART	Standard	Brown	20 Lyman Allyn Art Museum	Custom	Custom
5 EUGENE O'NEILL HOMESTEAD	Standard	Brown	13 SAILING SHIP ARGIA CRUISES	Standard	Brown	21 Connecticut College	Custom	Custom
6 FORT GRISWOLD BATTLEFIELD	Standard	Brown	14 HISTORIC STONINGTON BOROUGH	Standard	Brown	22 Shaw Mansion	Custom	Custom
7 UConn Avery Point	Standard	Green	15 CAPTAIN PALMER HOUSE	Standard	Brown	23 Submarine Veterans Memorial	Custom	Custom
8 BLUFF POINT STATE PARK	Standard	Brown	16 OLD LIGHTHOUSE MUSEUM	Standard	Brown	24 Submarine Force Museum	Custom	Custom
						25 NESSF	Custom	Custom



MITCHELL

C O L L E G E



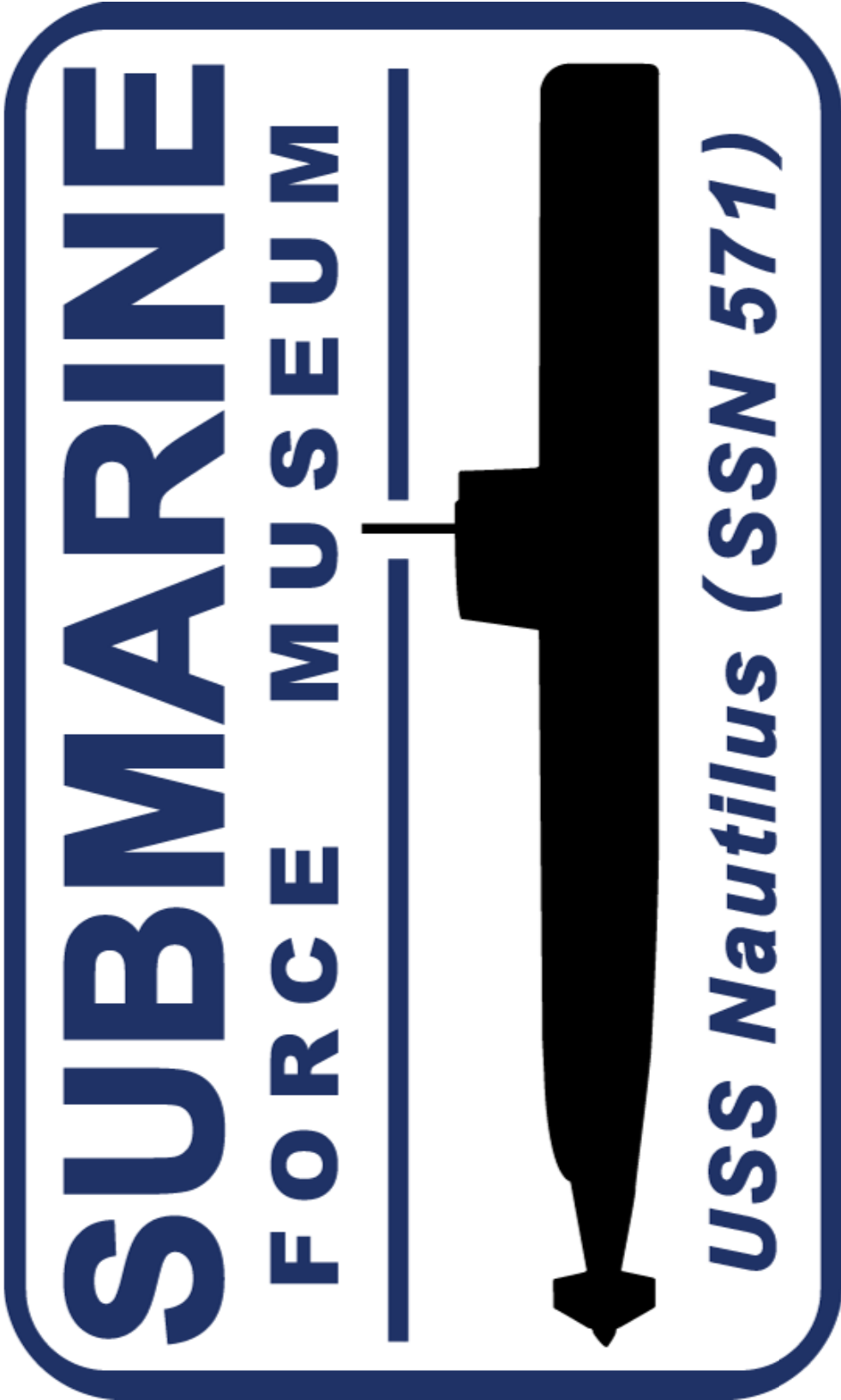




Submarine Veterans of World War II



National Memorial





CONTRACT TIME AND LIQUIDATED DAMAGES

In order to minimize the hazard, cost and inconvenience to the traveling public and pollution of the environment, it is necessary to limit the time of construction work, which interferes with traffic as specified in Article 1.08.04 of the Special Provisions.

There will be two assessments for liquidated damages and they will be addressed in the following manner:

1. For this contract, an assessment per day for liquidated damages, at a rate of Two Thousand Five Hundred (\$2,500) Dollars per day shall be applied to each calendar day the work runs in excess of the Four Hundred Seventy-Four (474) allowed calendar days for the contract.
2. For this contract, an assessment per hour for liquidated damages shall be applied to each hour, or any portion thereof, in which the Contractor interferes with normal traffic operations during the restricted hours given in Article 1.08.04 of the Special Provisions. The liquidated damages shall be as shown in the following tables entitled "Liquidated Damages Per Hour" for each hour, or any portion thereof, in which the Contractor interferes with normal traffic operations during the restricted hours.

For the purpose of administering this contract, normal traffic operations are considered interfered with when:

1. Any portion of the travel lanes or shoulders is occupied by any personnel, equipment, materials, or supplies including signs.
2. The transition between the planes of pavement surfaces is at a rate of one inch in less than fifteen feet longitudinally.

LIQUIDATED DAMAGES PER HOUR

PROJECT NO. 0170-3447

SITE 1

I-95 NB in Greenwich

Mile Pt. 5.01

3 Through Lane Section		
If Working Periods Extends Into	A.M. 1 Lane Closure	A.M. 2 Lane Closure
1st Hour of Restrictive Period	\$ 500	\$ 5,000
2nd Hour of Restrictive Period	\$ 500	\$ 20,000
3rd Hour or any Subsequent Hour of Restrictive Period	\$ 500	\$ 60,000

The above liquidated damages apply to those hours shown on the Limitation of Operations charts designated with a “3” or “E”.

For those hours on the Limitation of Operations charts designated with a "2", the liquidated damages shown above for "1 Lane Closure" shall apply when only one lane is open to traffic.

For each hour shown on the Limitation of Operations charts designated with an “E”, liquidated damages of \$500 per hour shall apply if all available shoulder widths are not available to traffic.

Liquidated damages in the amount of \$500 shall apply for each hour, or part thereof, that the Contractor interferes with existing traffic operations on any ramps or turning roadways during the non-allowable hours.

LIQUIDATED DAMAGES PER HOUR

PROJECT NO. 0170-3447

SITE 2

I-95 SB in Westport

Mile Pt. 19.31

3 Through Lane Section		
If Working Periods Extends Into	A.M. 1 Lane Closure	A.M. 2 Lane Closure
1st Hour of Restrictive Period	\$ 35,000	\$ 90,000
2nd Hour of Restrictive Period	\$ 60,000	\$ 100,000
3rd Hour or any Subsequent Hour of Restrictive Period	\$ 60,000	\$ 100,000

The above liquidated damages apply to those hours shown on the Limitation of Operations charts designated with a “3” or “E”.

For those hours on the Limitation of Operations charts designated with a "2", the liquidated damages shown above for "1 Lane Closure" shall apply when only one lane is open to traffic.

For each hour shown on the Limitation of Operations charts designated with an “E”, liquidated damages of \$500 per hour shall apply if all available shoulder widths are not available to traffic.

Liquidated damages in the amount of \$500 shall apply for each hour, or part thereof, that the Contractor interferes with existing traffic operations on any ramps or turning roadways during the non-allowable hours.

LIQUIDATED DAMAGES PER HOUR

PROJECT NO. 0170-3447

SITE 3

I-95 NB in Bridgeport

Mile Pt. 30.59

3 Through Lane Section		
If Working Periods Extends Into	A.M. 1 Lane Closure	A.M. 2 Lane Closure
1st Hour of Restrictive Period	\$ 500	\$ 500
2nd Hour of Restrictive Period	\$ 500	\$ 20,000
3rd Hour or any Subsequent Hour of Restrictive Period	\$ 500	\$ 60,000

The above liquidated damages apply to those hours shown on the Limitation of Operations charts designated with a “3” or “E”.

For those hours on the Limitation of Operations charts designated with a "2", the liquidated damages shown above for "1 Lane Closure" shall apply when only one lane is open to traffic.

For each hour shown on the Limitation of Operations charts designated with an “E”, liquidated damages of \$500 per hour shall apply if all available shoulder widths are not available to traffic.

Liquidated damages in the amount of \$500 shall apply for each hour, or part thereof, that the Contractor interferes with existing traffic operations on any ramps or turning roadways during the non-allowable hours.

LIQUIDATED DAMAGES PER HOUR

PROJECT NO. 0170-3447

SITE 3

I-95 SB in Bridgeport

Mile Pt. 30.59

3 Through Lane Section N.Y. State Line to Exit 30 Mile Pt. 0.00 to 30.90		
If Working Periods Extends Into	A.M. 1 Lane Closure	A.M. 2 Lane Closure
1st Hour of Restrictive Period	\$ 35,000	\$ 90,000
2nd Hour of Restrictive Period	\$ 60,000	\$ 100,000
3rd Hour or any Subsequent Hour of Restrictive Period	\$ 60,000	\$ 100,000

The above liquidated damages apply to those hours shown on the Limitation of Operations charts designated with a “3” or “E”.

For those hours on the Limitation of Operations charts designated with a "2", the liquidated damages shown above for "1 Lane Closure" shall apply when only one lane is open to traffic.

For each hour shown on the Limitation of Operations charts designated with an “E”, liquidated damages of \$500 per hour shall apply if all available shoulder widths are not available to traffic.

Liquidated damages in the amount of \$500 shall apply for each hour, or part thereof, that the Contractor interferes with existing traffic operations on any ramps or turning roadways during the non-allowable hours.

LIQUIDATED DAMAGES PER HOUR

PROJECT NO. 0170-3447

SITE 5

I-691EB in Meriden

Mile Pt. 1.65

2 Through Lane Section Mile Pt. 2.15 to 8.38		
If Working Periods Extends Into	A.M. 1 Lane Closure	P.M. 1 Lane Closure
1st Hour of Restrictive Period	\$ 500	\$ 1,000
2nd Hour of Restrictive Period	\$ 9,000	\$ 2,000
3rd Hour or any Subsequent Hour of Restrictive Period	\$ 15,000	\$ 4,000

The above liquidated damages apply to those hours shown on the Limitation of Operations charts designated with a “2” or “E”.

For each hour shown on the Limitation of Operations charts designated with an “E”, liquidated damages of \$500 per hour shall apply if all available shoulder widths are not available to traffic.

Liquidated damages in the amount of \$500 shall apply for each hour, or part thereof, that the Contractor interferes with existing traffic operations on any ramps or turning roadways during the non-allowable hours.

LIQUIDATED DAMAGES PER HOUR

PROJECT NO. 0170-3447

SITE 5

I-691EB in Meriden

Mile Pt. 1.65

3 Through Lane Section Mile Pt. 0.57 to 2.15			
If Working Periods Extends Into	A.M. 1 Lane Closure	A.M. 2 Lane Closure	P.M. 1 Lane Closure
1st Hour of Restrictive Period	\$ 500	\$ 7,000	\$ 500
2nd Hour of Restrictive Period	\$ 500	\$ 40,000	\$ 500
3rd Hour or any Subsequent Hour of Restrictive Period	\$ 500	\$60,000	\$ 500

The above liquidated damages apply to those hours shown on the Limitation of Operations charts designated with a “3” or “E”.

For those hours on the Limitation of Operations charts designated with a "2", the liquidated damages shown above for "1 Lane Closure" shall apply when only one lane is open to traffic.

For each hour shown on the Limitation of Operations charts designated with an “E”, liquidated damages of \$500 per hour shall apply if all available shoulder widths are not available to traffic.

Liquidated damages in the amount of \$500 shall apply for each hour, or part thereof, that the Contractor interferes with existing traffic operations on any ramps or turning roadways during the non-allowable hours.

LIQUIDATED DAMAGES PER HOUR

PROJECT NO. 0170-3447

SITE 5

I-691WB in Meriden

Mile Pt. 1.65

2 Through Lane Section Mile Pt. 0.17 to 0.48		
If Working Periods Extends Into	A.M. 1 Lane Closure	P.M. 1 Lane Closure
1st Hour of Restrictive Period	\$ 500	\$ 1,000
2nd Hour of Restrictive Period	\$ 500	\$ 3,000
3rd Hour or any Subsequent Hour of Restrictive Period	\$ 500	\$ 6,000

The above liquidated damages apply to those hours shown on the Limitation of Operations charts designated with a “2” or “E”.

For each hour shown on the Limitation of Operations charts designated with an “E”, liquidated damages of \$500 per hour shall apply if all available shoulder widths are not available to traffic.

Liquidated damages in the amount of \$500 shall apply for each hour, or part thereof, that the Contractor interferes with existing traffic operations on any ramps or turning roadways during the non-allowable hours.

LIQUIDATED DAMAGES PER HOUR

PROJECT NO. 0170-3447

SITE 5

I-691WB in Meriden

Mile Pt. 1.65

3 Through Lane Section Mile Pt. 0.48 to 2.60			
If Working Periods Extends Into	A.M. 1 Lane Closure	A.M. 2 Lane Closure	P.M. 1 Lane Closure
1st Hour of Restrictive Period	\$ 500	\$ 500	\$ 500
2nd Hour of Restrictive Period	\$ 500	\$ 8,000	\$ 500
3rd Hour or any Subsequent Hour of Restrictive Period	\$ 500	\$15,000	\$ 500

The above liquidated damages apply to those hours shown on the Limitation of Operations charts designated with a "3" or "E".

For those hours on the Limitation of Operations charts designated with a "2", the liquidated damages shown above for "1 Lane Closure" shall apply when only one lane is open to traffic.

For each hour shown on the Limitation of Operations charts designated with an "E", liquidated damages of \$500 per hour shall apply if all available shoulder widths are not available to traffic.

Liquidated damages in the amount of \$500 shall apply for each hour, or part thereof, that the Contractor interferes with existing traffic operations on any ramps or turning roadways during the non-allowable hours.

LIQUIDATED DAMAGES PER HOUR**PROJECT NO. 0170-3447****SITE 7****I-91 SB in Rocky Hill****Mile Pt. 28.87**

4 Through Lane Section				
If Working Periods Extends Into	A.M. 1 Lane Closure	A.M. 2 Lane Closure	A.M. 3 Lane Closure	P.M. 1 Lane Closure
1st Hour of Restrictive Period	\$ 500	\$ 500	\$ 25,000	\$ 500
2nd Hour of Restrictive Period	\$ 1,000	\$ 25,000	\$ 100,000	\$ 7,000
3rd Hour or any Subsequent Hour of Restrictive Period	\$ 1,000	\$50,000	\$ 100,000	\$ 15,000

The above liquidated damages apply to those hours shown on the Limitation of Operations charts designated with a "4" or "E".

For those hours on the Limitation of Operations charts designated with a "2", the liquidated damages shown above for "1 Lane Closure" shall apply when only one lane is open to traffic.

For those hours on the Limitation of Operations charts designated with a "3", the liquidated damages shown above for "2 Lane Closure" shall apply when only one lane is open to traffic.

For those hours on the Limitation of Operations charts designated with a "3", the liquidated damages shown above for "1" Lane Closure" shall apply when only two lane is open to traffic.

For each hour shown on the Limitation of Operations charts designated with an "E", liquidated damages of \$500 per hour shall apply if all available shoulder widths are not available to traffic.

Liquidated damages in the amount of \$500 shall apply for each hour, or part thereof, that the Contractor interferes with existing traffic operations on any ramps or turning roadways during the non-allowable hours.

LIQUIDATED DAMAGES PER HOUR

SITE 8

PROJECT NO. 0170-3447

Rte. 508 in Farmington

Mile Pt. 0.45

3 Through Lane Section of I-84 WB (East of RTE 508) in Farmington		
If Working Periods Extends Into	A.M. 1 Lane Closure	A.M. 2 Lane Closure
1st Hour of Restrictive Period	\$ 500	\$ 10,000
2nd Hour of Restrictive Period	\$ 500	\$ 50,000
3rd Hour or any Subsequent Hour of Restrictive Period	\$ 3,000	\$ 100,000

The above liquidated damages apply to those hours shown on the Limitation of Operations charts designated with a “3” or “E”.

For those hours on the Limitation of Operations charts designated with a "2", the liquidated damages shown above for "1 Lane Closure" shall apply when only one lane is open to traffic.

For each hour shown on the Limitation of Operations charts designated with an “E”, liquidated damages of \$500 per hour shall apply if all available shoulder widths are not available to traffic.

Liquidated damages in the amount of \$500 shall apply for each hour, or part thereof, that the Contractor interferes with existing traffic operations on any ramps or turning roadways during the non-allowable hours.

LIQUIDATED DAMAGES PER HOUR

SITE 9
I-84 EB in East Hartford
Mile Pt. 64.94

5 Through Lane Section (East of Rte. 15 NB On Ramp)					
If Working Periods Extends Into	A.M. 1 Lane Closure	A.M. 2 Lane Closure	A.M. 3 Lane Closure	P.M. 1 Lane Closure	P.M. 2 Lane Closure
1st Hour of Restrictive Period	\$ 500	\$ 500	\$ 500	\$ 500	\$ 1,000
2nd Hour of Restrictive Period	\$ 500	\$ 500	\$ 500	\$ 7,000	\$ 35,000
3rd Hour or any Subsequent Hour of Restrictive Period	\$ 500	\$ 500	\$ 500	\$ 7,000	\$ 70,000

The above liquidated damages apply to those hours shown on the Limitation of Operations charts designated with a "5" or "E".

For those hours on the Limitation of Operations charts designated with a "2", the liquidated damages shown above for "1 Lane Closure" shall apply when only one lane is open to traffic.

For those hours on the Limitation of Operations charts designated with a "3", the liquidated damages shown above for "2 Lane Closure" shall apply when only one lane is open to traffic.

For those hours on the Limitation of Operations charts designated with a "3", the liquidated damages shown above for "1 Lane Closure" shall apply when only two lanes are open to traffic.

For those hours on the Limitation of Operations charts designated with a "4", the liquidated damages shown above for "3 Lane Closure" shall apply when only one lane is open to traffic.

For those hours on the Limitation of Operations charts designated with a "4", the liquidated damages shown above for "2 Lane Closure" shall apply when only two lanes are open to traffic.

For those hours on the Limitation of Operations charts designated with a "4", the liquidated damages shown above for "1 Lane Closure" shall apply when only three lanes are open to traffic.

For each hour shown on the Limitation of Operations charts designated with an "E", liquidated damages of \$500 shall apply for each hour, or part thereof, if all available shoulder widths are not available to traffic.

Liquidated damages in the amount of \$500 shall apply for each hour, or part thereof, that the Contractor interferes with existing traffic operations on any ramps or turning roadways during the non-allowable hours.

LIQUIDATED DAMAGES PER HOUR

SITE 9
I-84 WB in East Hartford
Mile Pt. 64.94

5 Through Lane Section (West of Rte. 384 WB On Ramp)					
If Working Periods Extends Into	A.M. 1 Lane Closure	A.M. 2 Lane Closure	A.M. 3 Lane Closure	P.M. 1 Lane Closure	P.M. 2 Lane Closure
1st Hour of Restrictive Period	\$ 500	\$ 500	\$ 10,000	\$ 500	\$ 500
2nd Hour of Restrictive Period	\$ 500	\$ 15,000	\$ 70,000	\$ 500	\$ 500
3rd Hour or any Subsequent Hour of Restrictive Period	\$ 500	\$ 35,000	\$ 100,000	\$ 500	\$ 500

The above liquidated damages apply to those hours shown on the Limitation of Operations charts designated with a "5" or "E".

For those hours on the Limitation of Operations charts designated with a "2", the liquidated damages shown above for "1 Lane Closure" shall apply when only one lane is open to traffic.

For those hours on the Limitation of Operations charts designated with a "3", the liquidated damages shown above for "2 Lane Closure" shall apply when only one lane is open to traffic.

For those hours on the Limitation of Operations charts designated with a "3", the liquidated damages shown above for "1 Lane Closure" shall apply when only two lanes are open to traffic.

For those hours on the Limitation of Operations charts designated with a "4", the liquidated damages shown above for "3 Lane Closure" shall apply when only one lane is open to traffic.

For those hours on the Limitation of Operations charts designated with a "4", the liquidated damages shown above for "2 Lane Closure" shall apply when only two lanes are open to traffic.

For those hours on the Limitation of Operations charts designated with a "4", the liquidated damages shown above for "1 Lane Closure" shall apply when only three lanes are open to traffic.

For each hour shown on the Limitation of Operations charts designated with an "E", liquidated damages of \$500 shall apply for each hour, or part thereof, if all available shoulder widths are not available to traffic.

Liquidated damages in the amount of \$500 shall apply for each hour, or part thereof, that the Contractor interferes with existing traffic operations on any ramps or turning roadways during the non-allowable hours.

LIQUIDATED DAMAGES PER HOUR

**SITE 9
I-84 EB in East Hartford
Mile Pt. 64.94**

3 Through Lane Section (West of Rte. 15 NB On Ramp)			
If Working Periods Extends Into	A.M. 1 Lane Closure	A.M. 2 Lane Closure	P.M. 1 Lane Closure
1st Hour of Restrictive Period	\$ 500	\$ 500	\$ 500
2nd Hour of Restrictive Period	\$ 500	\$ 6,000	\$ 15,000
3rd Hour or any Subsequent Hour of Restrictive Period	\$ 500	\$ 15,000	\$ 60,000

The above liquidated damages apply to those hours shown on the Limitation of Operations charts designated with a “3” or “E”.

For those hours on the Limitation of Operations charts designated with a "2", the liquidated damages shown above for "1 Lane Closure" shall apply when only one lane is open to traffic.

For each hour shown on the Limitation of Operations charts designated with an “E”, liquidated damages of \$500 per hour shall apply if all available shoulder widths are not available to traffic.

Liquidated damages in the amount of \$500 shall apply for each hour, or part thereof, that the Contractor interferes with existing traffic operations on any ramps or turning roadways during the non-allowable hours.

LIQUIDATED DAMAGES PER HOUR

**SITE 9
I-84 WB in East Hartford
Mile Pt. 64.94**

3 Through Lane Section (East of Rte. 384 WB On Ramp)		
If Working Periods Extends Into	A.M. 1 Lane Closure	A.M. 2 Lane Closure
1st Hour of Restrictive Period	\$ 25,000	\$ 100,000
2nd Hour of Restrictive Period	\$ 90,000	\$ \$ 100,000
3rd Hour or any Subsequent Hour of Restrictive Period	\$ 80,000	\$ \$ 100,000

The above liquidated damages apply to those hours shown on the Limitation of Operations charts designated with a “3” or “E”.

For those hours on the Limitation of Operations charts designated with a "2", the liquidated damages shown above for "1 Lane Closure" shall apply when only one lane is open to traffic.

For each hour shown on the Limitation of Operations charts designated with an “E”, liquidated damages of \$500 per hour shall apply if all available shoulder widths are not available to traffic.

Liquidated damages in the amount of \$500 shall apply for each hour, or part thereof, that the Contractor interferes with existing traffic operations on any ramps or turning roadways during the non-allowable hours.

LIQUIDATED DAMAGES PER HOUR

PROJECT NO. 0170-3447

SITE 10

I-91 NB in Enfield

Mile Pt. 55.55

3 Through Lane Section			
If Working Periods Extends Into	A.M. 1 Lane Closure	A.M. 2 Lane Closure	P.M. 1 Lane Closure
1st Hour of Restrictive Period	\$ 500	\$ 500	\$ 8,000
2nd Hour of Restrictive Period	\$ 500	\$ 10,000	\$ 35,000
3rd Hour or any Subsequent Hour of Restrictive Period	\$ 500	\$20,000	\$ 50,000

The above liquidated damages apply to those hours shown on the Limitation of Operations charts designated with a “3” or “E”.

For those hours on the Limitation of Operations charts designated with a "2", the liquidated damages shown above for "1 Lane Closure" shall apply when only one lane is open to traffic.

For each hour shown on the Limitation of Operations charts designated with an “E”, liquidated damages of \$500 per hour shall apply if all available shoulder widths are not available to traffic.

Liquidated damages in the amount of \$500 shall apply for each hour, or part thereof, that the Contractor interferes with existing traffic operations on any ramps or turning roadways during the non-allowable hours.

LIQUIDATED DAMAGES PER HOUR

PROJECT NO. 0170-3447

SITE 11

RTE. 2 WB in Colchester

Mile Pt. 24.12

2 Through Lane Section		
If Working Periods Extends Into	A.M. 1 Lane Closure	P.M. 1 Lane Closure
1st Hour of Restrictive Period	\$ 500	\$ 500
2nd Hour of Restrictive Period	\$ 500	\$ 500
3rd Hour or any Subsequent Hour of Restrictive Period	\$ 500	\$ 500

The above liquidated damages apply to those hours shown on the Limitation of Operations charts designated with a “2” or “E”.

For each hour shown on the Limitation of Operations charts designated with an “E”, liquidated damages of \$500 per hour shall apply if all available shoulder widths are not available to traffic.

Liquidated damages in the amount of \$500 shall apply for each hour, or part thereof, that the Contractor interferes with existing traffic operations on any ramps or turning roadways during the non-allowable hours.

LIQUIDATED DAMAGES PER HOUR

PROJECT NO. 0148-0210

SITE 1

I-91 NB in Wallingford

Mile Pt. 15.68

3 Through Lane Section			
If Working Periods Extends Into	A.M. 1 Lane Closure	A.M. 2 Lane Closure	P.M. 1 Lane Closure
1st Hour of Restrictive Period	\$ 500	\$ 500	\$ 500
2nd Hour of Restrictive Period	\$ 500	\$ 15,000	\$ 500
3rd Hour or any Subsequent Hour of Restrictive Period	\$ 500	\$40,000	\$ 500

The above liquidated damages apply to those hours shown on the Limitation of Operations charts designated with a “3” or “E”.

For those hours on the Limitation of Operations charts designated with a "2", the liquidated damages shown above for "1 Lane Closure" shall apply when only one lane is open to traffic.

For each hour shown on the Limitation of Operations charts designated with an “E”, liquidated damages of \$500 per hour shall apply if all available shoulder widths are not available to traffic.

Liquidated damages in the amount of \$500 shall apply for each hour, or part thereof, that the Contractor interferes with existing traffic operations on any ramps or turning roadways during the non-allowable hours.

LIQUIDATED DAMAGES PER HOUR
I-95 ATTRACTION SIGNING BETWEEN GROTON AND NORTH STONINGTON

4 Lane Section (Route I-95 Northbound)					
If Working Periods Extends Into	A.M. 1 Lane Closure	A.M. 2 Lane Closure	A.M. 3 Lane Closure	P.M. 1 Lane Closure	P.M. 2 Lane Closure
1st Hour of Restrictive Period	\$ 500	\$ 500	\$ 500	\$ 500	\$ 10,000
2nd Hour of Restrictive Period	\$ 500	\$ 500	\$ 4,000	\$ 500	\$ 40,000
3rd Hour or any Subsequent Hour of Restrictive Period	\$ 500	\$ 500	\$ 15,000	\$ 500	\$ 50,000

The above liquidated damages apply to those hours shown on the Limitation of Operations charts designated with a "4" or "E".

For those hours on the Limitation of Operations charts designated with a "2", the liquidated damages shown above for "1 Lane Closure" shall apply when only one lane is open to traffic.

For those hours on the Limitation of Operations charts designated with a "3", the liquidated damages shown above for "2 Lane Closure" shall apply when only one lane is open to traffic.

For those hours on the Limitation of Operations charts designated with a "3", the liquidated damages shown above for "1 Lane Closure" shall apply when only two lane is open to traffic.

For each hour shown on the Limitation of Operations charts designated with an "E", liquidated damages of \$500 per hour shall apply if all available shoulder widths are not available to traffic.

Liquidated damages in the amount of \$500 shall apply for each hour, or part thereof, that the Contractor interferes with existing traffic operations on any ramps or turning roadways during the non-allowable hours.

LIQUIDATED DAMAGES PER HOUR
I-95 ATTRACTION SIGNING BETWEEN GROTON AND NORTH STONINGTON

3 Lane Section (Route I-95 Northbound)			
If Working Periods Extends Into	A.M. 1 Lane Closure	A.M. 2 Lane Closure	P.M. 1 Lane Closure
1st Hour of Restrictive Period	\$ 500	\$ 500	\$ 500
2nd Hour of Restrictive Period	\$ 500	\$ 500	\$ 500
3rd Hour or any Subsequent Hour of Restrictive Period	\$ 500	\$500	\$ 500

The above liquidated damages apply to those hours shown on the Limitation of Operations charts designated with a "3" or "E".

For those hours on the Limitation of Operations charts designated with a "2", the liquidated damages shown above for "1 Lane Closure" shall apply when only one lane is open to traffic.

For each hour shown on the Limitation of Operations charts designated with an "E", liquidated damages of \$500 per hour shall apply if all available shoulder widths are not available to traffic.

Liquidated damages in the amount of \$500 shall apply for each hour, or part thereof, that the Contractor interferes with existing traffic operations on any ramps or turning roadways during the non-allowable hours.

LIQUIDATED DAMAGES PER HOUR
I-95 ATTRACTION SIGNING BETWEEN GROTON AND NORTH STONINGTON

2 Lane Section (Route I-95 Northbound)	
If Working Periods Extends Into	A.M. 1 Lane Closure
1st Hour of Restrictive Period	\$ 500
2nd Hour of Restrictive Period	\$ 500
3rd Hour or any Subsequent Hour of Restrictive Period	\$ 500

The above liquidated damages apply to those hours shown on the Limitation of Operations charts designated with a “2” or “E”.

For each hour shown on the Limitation of Operations charts designated with an “E”, liquidated damages of \$500 per hour shall apply if all available shoulder widths are not available to traffic.

Liquidated damages in the amount of \$500 shall apply for each hour, or part thereof, that the Contractor interferes with existing traffic operations on any ramps or turning roadways during the non-allowable hours.

LIQUIDATED DAMAGES PER HOUR
I-95 ATTRACTION SIGNING BETWEEN GROTON AND NORTH STONINGTON

4 Lane Section (Route I-95 Southbound)					
If Working Periods Extends Into	A.M. 1 Lane Closure	A.M. 2 Lane Closure	A.M. 3 Lane Closure	P.M. 1 Lane Closure	P.M. 2 Lane Closure
1st Hour of Restrictive Period	\$ 500	\$ 8,000	\$ 40,000	\$ 500	\$ 5,000
2nd Hour of Restrictive Period	\$ 500	\$ 35,000	\$ 100,000	\$ 500	\$ 10,000
3rd Hour or any Subsequent Hour of Restrictive Period	\$ 500	\$ 50,000	\$ 100,000	\$ 500	\$ 15,000

The above liquidated damages apply to those hours shown on the Limitation of Operations charts designated with a "4" or "E".

For those hours on the Limitation of Operations charts designated with a "2", the liquidated damages shown above for "1 Lane Closure" shall apply when only one lane is open to traffic.

For those hours on the Limitation of Operations charts designated with a "3", the liquidated damages shown above for "2 Lane Closure" shall apply when only one lane is open to traffic.

For those hours on the Limitation of Operations charts designated with a "3", the liquidated damages shown above for "1 Lane Closure" shall apply when only two lane is open to traffic.

For each hour shown on the Limitation of Operations charts designated with an "E", liquidated damages of \$500 per hour shall apply if all available shoulder widths are not available to traffic.

Liquidated damages in the amount of \$500 shall apply for each hour, or part thereof, that the Contractor interferes with existing traffic operations on any ramps or turning roadways during the non-allowable hours.

LIQUIDATED DAMAGES PER HOUR
I-95 ATTRACTION SIGNING BETWEEN GROTON AND NORTH STONINGTON

3 Lane Section (Route I-95 Southbound)			
If Working Periods Extends Into	A.M. 1 Lane Closure	A.M. 2 Lane Closure	P.M. 1 Lane Closure
1st Hour of Restrictive Period	\$ 500	\$ 8,000	\$ 500
2nd Hour of Restrictive Period	\$ 500	\$ 30,000	\$ 500
3rd Hour or any Subsequent Hour of Restrictive Period	\$ 500	\$50,000	\$ 500

The above liquidated damages apply to those hours shown on the Limitation of Operations charts designated with a "3" or "E".

For those hours on the Limitation of Operations charts designated with a "2", the liquidated damages shown above for "1 Lane Closure" shall apply when only one lane is open to traffic.

For each hour shown on the Limitation of Operations charts designated with an "E", liquidated damages of \$500 per hour shall apply if all available shoulder widths are not available to traffic.

Liquidated damages in the amount of \$500 shall apply for each hour, or part thereof, that the Contractor interferes with existing traffic operations on any ramps or turning roadways during the non-allowable hours.

LIQUIDATED DAMAGES PER HOUR
I-95 ATTRACTION SIGNING BETWEEN GROTON AND NORTH STONINGTON

2 Lane Section (Route I-95 Southbound Exit 89 to Exit 90)		
If Working Periods Extends Into	A.M. 1 Lane Closure	
1st Hour of Restrictive Period	\$ 8,000	
2nd Hour of Restrictive Period	\$ 30,000	
3rd Hour or any Subsequent Hour of Restrictive Period	\$ 50,000	

The above liquidated damages apply to those hours shown on the Limitation of Operations charts designated with a “2” or “E”.

For each hour shown on the Limitation of Operations charts designated with an “E”, liquidated damages of \$500 per hour shall apply if all available shoulder widths are not available to traffic.

Liquidated damages in the amount of \$500 shall apply for each hour, or part thereof, that the Contractor interferes with existing traffic operations on any ramps or turning roadways during the non-allowable hours.

LIQUIDATED DAMAGES PER HOUR
I-95 ATTRACTION SIGNING BETWEEN GROTON AND NORTH STONINGTON

2 Lane Section (Route I-95 Southbound Exit 90 to R.I. State Line)		
If Working Periods Extends Into	A.M. 1 Lane Closure	P.M. 1 Lane Closure
1st Hour of Restrictive Period	\$ 500	\$ 500
2nd Hour of Restrictive Period	\$ 500	\$ 500
3rd Hour or any Subsequent Hour of Restrictive Period	\$ 500	\$ 500

The above liquidated damages apply to those hours shown on the Limitation of Operations charts designated with a “2” or “E”.

For each hour shown on the Limitation of Operations charts designated with an “E”, liquidated damages of \$500 per hour shall apply if all available shoulder widths are not available to traffic.

Liquidated damages in the amount of \$500 shall apply for each hour, or part thereof, that the Contractor interferes with existing traffic operations on any ramps or turning roadways during the non-allowable hours.

SECTION 1.08 – PROSECUTION AND PROGRESS

Article 1.08.03 - Prosecution of Work

Add the following:

ATTRACTION SIGNING ALONG I-95 BETWEEN GROTON AND NORTH STONINGTON

The intention of the prosecution of work shown in Subset No. 13 of the Contract Plans is for the installation of sheet aluminum attraction signs on existing extruded aluminum signs and as post mounted trail blazer signs for various attractions along I-95 in the towns of Groton, Stonington and North Stonington. The Contractor is to complete the installation of these signs as soon as practicable after the Notice to Proceed. As soon as practicable after award the Contractor may begin the process of procuring materials. Once begun, construction activities must progress continually until the new sign installations are complete.

Article 1.08.04 - Limitation of Operations - Add the following:

In order to provide for traffic operations as outlined in the Special Provision "Maintenance and Protection of Traffic," the Contractor will not be permitted to perform any work which will interfere with the described traffic operations on all project roadways as follows:

Route 2, I-84, I-91, I-95, I-691

On the following State observed Legal Holidays:

- New Year's Day
- Good Friday, Easter*
- Memorial Day
- Independence Day
- Labor Day
- Thanksgiving Day**
- Christmas Day

The following restrictions also apply:

On the day before and the day after any of the above Legal Holidays.

On the Friday, Saturday, and Sunday immediately preceding any of the above Holidays celebrated on a Monday.

On the Saturday, Sunday, and Monday immediately following any of the above Holidays celebrated on a Friday.

* From 6:00 a.m. the Thursday before the Holiday to 8:00 p.m. the Monday after the Holiday.

** From 6:00 a.m. the Wednesday before the Holiday to 8:00 p.m. the Monday after the Holiday.

During all other times

The Contractor shall maintain and protect traffic as shown on the accompanying "Limitation of Operations" charts, which dictate the minimum number of lanes that must remain open for each day of the week.

The Contractor will be allowed to halt traffic for a period not to exceed 10 minutes to perform necessary work for the purpose of erecting/removing overhead sign supports, as approved by the Engineer, between 12:01 a.m. and 5:00 a.m. on all non-Holiday days.

RAMPS, TURNING ROADWAYS AND HOV LANES:

Site 8 in Farmington(Ramp from I-84 W.B. to S.R. 508)

Monday through Friday between 6:00 a.m. and 7:00 p.m.

The Contractor will be allowed to halt traffic for a period not to exceed 10 minutes for the purpose of erecting/removing overhead sign supports, as approved by the Engineer, between 12:01 a.m. and 5:00 a.m. on all non-Holiday days.

Site 9 in East Hartford (On-Ramps 312 to I-84 EB & 118 to I-84 WB)

Monday through Friday between 6:00 a.m. and 9:00 a.m. & between 3:00 p.m. and 6:00 p.m.

The Contractor will be allowed to close On-Ramps 312 to I-84 EB & 118 to I-84 WB and detour traffic for a duration that shall not exceed 60 calendar days.

The detours shall not be during the University of Connecticut Football season at Rentschler Field (August through December).

The Contractor shall notify the Engineer at least 14 days in advance of the start of the On-Ramp closures.

The Contractor will be allowed to halt traffic for a period not to exceed 10 minutes for the purpose of erecting/removing overhead sign supports, as approved by the Engineer, between 12:01 a.m. and 5:00 a.m. on all non-Holiday days.

Site 9 in East Hartford (Rte 15 NB On-Ramp to I-84 EB) and (I-384 WB On-Ramp to I-84 WB)

Monday through Friday between 6:00 a.m. and 7:00 p.m.
Saturday and Sunday between 8:00 a.m. and 8:00 p.m.

The Contractor will be allowed to halt traffic for a period not to exceed 10 minutes for the purpose of erecting/removing overhead sign supports, as approved by the Engineer, between 12:01 a.m. and 5:00 a.m. on all non-Holiday days.

Site 9 in East Hartford (I-84 Restricted Lanes (HOV Lanes) including Entrance Ramps from I-84 EB and Silver Lane)

Monday through Friday between 6:00 a.m. and 9:00 a.m. & between 2:00 p.m. and 6:00 p.m.
Saturday and Sunday between 10:00 a.m. and 6:00 p.m.

All other Ramps and Turning Roadways

Monday through Friday between 6:00 a.m. and 9:00 a.m. & between 3:00 p.m. and 6:00 p.m.

The Contractor will be allowed to halt traffic for a period not to exceed 10 minutes for the purpose of erecting/removing overhead sign supports, as approved by the Engineer, between 12:01 a.m. and 5:00 a.m. on all non-Holiday days.

OTHER ROADWAYS:

4 LANE ROADWAYS:

Site 4 in Waterbury

Union Street & Washington Street

Monday through Friday between 6:00 a.m. and 9:00 a.m. & between 3:00 p.m. and 6:00 p.m.
Saturday and Sunday between 10:00 a.m. and 6:00 p.m.

Route 69 (Silver Street\Hamilton Ave.)

Monday through Friday between 6:00 a.m. and 9:00 a.m. & between 1:00 p.m. and 7:00 p.m.
Saturday and Sunday between 10:00 a.m. and 6:00 p.m.

The Contractor will be allowed to halt traffic for a period not to exceed 10 minutes for the purpose of erecting/removing overhead sign supports, as approved by the Engineer, between 12:01 a.m. and 5:00 a.m. on all non-Holiday days.

Site 6 in Berlin

U.S. Route 5& Route 15 (Berlin Turnpike)

Monday through Friday between 6:00 a.m. and 9:00 a.m. & between 2:00 p.m. and 7:00 p.m.
Saturday and Sunday between 10:00 a.m. and 6:00 p.m.

Route 372 (Mill Street)

Monday through Friday between 6:00 a.m. and 9:00 a.m. & between 3:00 p.m. and 6:00 p.m.
Saturday and Sunday between 10:00 a.m. and 6:00 p.m.

The Contractor will be allowed to halt traffic for a period not to exceed 10 minutes for the purpose of erecting/removing overhead sign supports, as approved by the Engineer, between 12:01 a.m. and 5:00 a.m. on all non-Holiday days.

Site 7 in Rocky Hill

Route 3 (Cromwell Avenue)

Monday through Friday between 6:00 a.m. and 9:00 a.m. & between 3:00 p.m. and 6:00 p.m.
Saturday and Sunday between 10:00 a.m. and 6:00 p.m.

Site 8 in Farmington (S.R. 508 West of the Signalized Intersection with Route 4)

Monday through Friday between 6:00 a.m. and 8:00 p.m.
Saturday and Sunday between 10:00 a.m. and 6:00 p.m.

Site 8 in Farmington (S.R. 508 East of the Signalized Intersection with Route 4)

Monday through Friday between 6:00 a.m. and 9:00 a.m. & between 3:00 p.m. and 6:00 p.m.
Saturday and Sunday between 10:00 a.m. and 6:00 p.m.

The Contractor will be allowed to halt traffic for a period not to exceed 10 minutes for the purpose of erecting/removing overhead sign supports, as approved by the Engineer, between 12:01 a.m. and 5:00 a.m. on all non-Holiday days.

Site 10 in Enfield

Route 190 (Hazard Avenue)

Monday through Friday between 6:00 a.m. 6:00 p.m.
Saturday and Sunday between 10:00 a.m. and 6:00 p.m.

All Other Roadways

Monday through Friday between 6:00 a.m. and 9:00 a.m. & between 3:00 p.m. and 6:00 p.m.
Saturday and Sunday between 10:00 a.m. and 6:00 p.m.

Additional Lane Closure Restrictions

It is anticipated that work on adjacent projects will be ongoing simultaneously with this project. The Contractor shall be aware of those projects and anticipate that coordination will be required to maintain proper traffic flow at all times on all project roadways, in a manner consistent with these specifications and acceptable to the Engineer.

The Contractor will not be allowed to perform any work that will interfere with traffic operations on a roadway when traffic operations are being restricted on that same roadway, unless there is at least a one mile clear area length where the entire roadway is open to traffic or the closures have been coordinated and are acceptable to the Engineer. The one mile clear area length shall be measured from the end of the first work area to the beginning of the signing pattern for the next work area.

**Limitation of Operations Charts
Minimum Number of Lanes to Remain Open**

SITE 1 I-95 NB in Greenwich Number of Through Lanes: 3								SITE 2 I-95 SB in Westport Number of Through Lanes: 3							
Hour Beginning	Sun	Mon	Tue	Wed	Thu	Fri	Sat	Hour Beginning	Sun	Mon	Tue	Wed	Thu	Fri	Sat
Mid	2	2	1	1	1	2	2	Mid	1	1	1	1	1	1	1
1 AM	2	1	1	1	1	1	1	1 AM	1	1	1	1	1	1	1
2 AM	1	1	1	1	1	1	1	2 AM	1	1	1	1	1	1	1
3 AM	1	1	1	1	1	1	1	3 AM	1	1	1	1	1	1	1
4 AM	1	1	1	1	1	1	1	4 AM	1	1	1	1	1	1	1
5 AM	1	2	2	2	2	2	1	5 AM	1	2	2	2	2	2	1
6 AM	1	E	E	E	E	E	2	6 AM	1	E	E	E	E	E	2
7 AM	2	E	E	E	E	E	E	7 AM	2	E	E	E	E	E	3
8 AM	2	E	E	E	E	E	E	8 AM	2	E	E	E	E	E	3
9 AM	E	E	E	E	E	E	E	9 AM	3	3	3	3	3	3	3
10 AM	E	E	E	E	E	E	E	10 AM	3	3	3	3	3	3	3
11 AM	E	E	E	E	E	E	E	11 AM	3	3	3	3	3	3	3
Noon	E	E	E	E	E	E	E	Noon	3	3	3	3	3	3	3
1 PM	E	E	E	E	E	E	E	1 PM	3	3	3	3	3	3	3
2 PM	E	E	E	E	E	E	E	2 PM	3	3	3	3	3	3	3
3 PM	E	E	E	E	E	E	E	3 PM	3	E	E	E	E	E	3
4 PM	E	E	E	E	E	E	E	4 PM	3	E	E	E	E	E	3
5 PM	E	E	E	E	E	E	E	5 PM	3	E	E	E	E	E	3
6 PM	E	E	E	E	E	E	3	6 PM	3	3	3	3	3	3	3
7 PM	3	E	E	E	E	E	3	7 PM	3	3	3	3	3	3	3
8 PM	3	3	3	3	E	E	3	8 PM	3	2	2	2	3	3	3
9 PM	3	3	3	3	3	E	3	9 PM	3	2	2	2	2	3	3
10 PM	2	2	2	2	2	3	3	10 PM	2	2	2	2	2	2	2
11 PM	2	2	2	2	2	2	2	11 PM	2	1	1	1	1	2	2

On Holidays and within Holiday Periods, all Hours shall be 'E.'

‘E’ = maintain existing traffic operations = all available travel lanes, including exit only lanes, climbing lanes and all available shoulder widths shall be open to traffic during this period

SITE 3 I-95 NB in Bridgeport Number of Through Lanes: 3							
Hour Beginning	Sun	Mon	Tue	Wed	Thu	Fri	Sat
Mid	1	1	1	1	1	1	1
1 AM	1	1	1	1	1	1	1
2 AM	1	1	1	1	1	1	1
3 AM	1	1	1	1	1	1	1
4 AM	1	2	2	2	2	2	1
5 AM	1	3	3	3	3	3	2
6 AM	2	E	E	E	E	E	E
7 AM	2	E	E	E	E	E	E
8 AM	E	E	E	E	E	E	E
9 AM	E	E	E	E	E	E	E
10 AM	E	E	E	E	E	E	E
11 AM	E	E	E	E	E	E	E
Noon	E	E	E	E	E	E	E
1 PM	E	E	E	E	E	E	E
2 PM	E	E	E	E	E	E	E
3 PM	E	E	E	E	E	E	E
4 PM	E	E	E	E	E	E	E
5 PM	E	E	E	E	E	E	E
6 PM	E	3	3	3	3	E	E
7 PM	2	2	2	3	3	3	3
8 PM	2	2	2	2	2	3	2
9 PM	2	2	2	2	2	2	2
10 PM	2	1	1	1	2	2	2
11 PM	1	1	1	1	1	1	1

SITE 3 I-95 SB in Bridgeport Number of Through Lanes: 3							
Hour Beginning	Sun	Mon	Tue	Wed	Thu	Fri	Sat
Mid	1	1	1	1	1	1	1
1 AM	1	1	1	1	1	1	1
2 AM	1	1	1	1	1	1	1
3 AM	1	1	1	1	1	1	1
4 AM	1	2	2	2	2	2	1
5 AM	1	3	3	3	3	3	2
6 AM	1	E	E	E	E	E	2
7 AM	2	E	E	E	E	E	E
8 AM	2	E	E	E	E	E	E
9 AM	E	E	E	E	E	E	E
10 AM	E	E	E	E	E	E	E
11 AM	E	E	E	E	E	E	E
Noon	E	E	E	E	E	E	E
1 PM	E	E	E	E	E	E	E
2 PM	E	E	E	E	E	E	E
3 PM	E	E	E	E	E	E	E
4 PM	E	E	E	E	E	E	E
5 PM	E	E	E	E	E	E	3
6 PM	3	3	3	3	3	3	3
7 PM	3	3	3	3	3	3	3
8 PM	3	2	2	2	2	3	3
9 PM	2	2	2	2	2	2	2
10 PM	2	1	1	1	2	2	2
11 PM	1	1	1	1	1	1	1

On Holidays and within Holiday Periods, all Hours shall be ‘E.’

‘E’ = maintain existing traffic operations = all available travel lanes, including exit only lanes, climbing lanes and all available shoulder widths shall be open to traffic during this period

SITE 5 I-691 EB in Meriden Number of Through Lanes: (3lane section & 2 lane section)							
Hour Beginning	Sun	Mon	Tue	Wed	Thu	Fri	Sat
Mid	1	1	1	1	1	1	1
1 AM	1	1	1	1	1	1	1
2 AM	1	1	1	1	1	1	1
3 AM	1	1	1	1	1	1	1
4 AM	1	1	1	1	1	1	1
5 AM	1	1	1	1	1	1	1
6 AM	1	E	E	E	E	E	1
7 AM	1	E	E	E	E	E	2
8 AM	1	E	E	E	E	E	2
9 AM	2	2	2	2	2	2	2
10 AM	2	2	2	2	2	2	2
11 AM	2	2	2	2	2	2	2
Noon	2	2	2	2	2	2	2
1 PM	2	2	2	2	2	2	2
2 PM	2	2	2	2	2	2	2
3 PM	2	E	E	E	E	E	2
4 PM	2	E	E	E	E	E	2
5 PM	2	E	E	E	E	E	2
6 PM	2	2	2	2	2	2	2
7 PM	2	2	2	2	2	2	2
8 PM	1	1	1	1	1	2	2
9 PM	1	1	1	1	1	1	1
10 PM	1	1	1	1	1	1	1
11 PM	1	1	1	1	1	1	1

SITE 5 I-691 WB in Meriden Number of Through Lanes: (3lane section & 2 lane section)							
Hour Beginning	Sun	Mon	Tue	Wed	Thu	Fri	Sat
Mid	1	1	1	1	1	1	1
1 AM	1	1	1	1	1	1	1
2 AM	1	1	1	1	1	1	1
3 AM	1	1	1	1	1	1	1
4 AM	1	1	1	1	1	1	1
5 AM	1	1	1	1	1	1	1
6 AM	1	E	E	E	E	E	1
7 AM	1	E	E	E	E	E	1
8 AM	1	E	E	E	E	E	2
9 AM	1	2	2	2	2	2	2
10 AM	2	2	2	2	2	2	2
11 AM	2	2	2	2	2	2	2
Noon	2	2	2	2	2	2	2
1 PM	2	2	2	2	2	2	2
2 PM	2	2	2	2	2	E	2
3 PM	2	E	E	E	E	E	2
4 PM	2	E	E	E	E	E	2
5 PM	2	E	E	E	E	E	2
6 PM	2	2	2	2	2	2	2
7 PM	2	2	2	2	2	2	2
8 PM	2	2	2	2	2	2	2
9 PM	1	1	1	2	2	2	2
10 PM	1	1	1	1	1	1	1
11 PM	1	1	1	1	1	1	1

On Holidays and within Holiday Periods, all Hours shall be ‘E.’

‘E’ = maintain existing traffic operations = all available travel lanes, including exit only lanes, climbing lanes and all available shoulder widths shall be open to traffic during this period

SITE 7 I-91 SB Rocky Hill Number of Through Lanes: 4							
Hour Beginning	Sun	Mon	Tue	Wed	Thu	Fri	Sat
Mid	1	1	1	1	1	1	1
1 AM	1	1	1	1	1	1	1
2 AM	1	1	1	1	1	1	1
3 AM	1	1	1	1	1	1	1
4 AM	1	1	1	1	1	1	1
5 AM	1	2	2	2	2	2	1
6 AM	1	E	E	E	E	E	2
7 AM	1	E	E	E	E	E	2
8 AM	2	E	E	E	E	E	3
9 AM	2	3	3	3	3	4	3
10 AM	3	3	3	3	3	4	4
11 AM	3	3	3	3	3	4	E
Noon	4	3	3	3	3	4	4
1 PM	4	3	3	3	4	4	4
2 PM	4	4	4	4	4	4	4
3 PM	4	E	E	E	E	E	4
4 PM	4	E	E	E	E	E	4
5 PM	4	E	E	E	E	E	4
6 PM	3	4	4	4	4	E	3
7 PM	3	3	3	3	3	3	3
8 PM	3	2	2	2	2	3	2
9 PM	2	2	2	2	2	2	2
10 PM	2	2	2	2	2	2	2
11 PM	2	1	1	1	1	2	2

SITE 8 I-84 Westbound in Farmington Number of Through Lanes: 3							
Hour Beginning	Sun	Mon	Tue	Wed	Thu	Fri	Sat
Mid	1	1	1	1	1	1	2
1 AM	1	1	1	1	1	1	1
2 AM	1	1	1	1	1	1	1
3 AM	1	1	1	1	1	1	1
4 AM	1	1	1	1	1	1	1
5 AM	1	1	1	1	1	1	1
6 AM	1	E	E	E	E	E	1
7 AM	1	E	E	E	E	E	2
8 AM	2	E	E	E	E	E	2
9 AM	2	E	E	E	E	E	3
10 AM	3	E	E	E	E	E	3
11 AM	3	E	E	E	E	E	3
Noon	3	E	E	E	E	E	3
1 PM	3	E	E	E	E	E	3
2 PM	E	E	E	E	E	E	E
3 PM	E	E	E	E	E	E	E
4 PM	E	E	E	E	E	E	3
5 PM	E	E	E	E	E	E	3
6 PM	3	E	E	E	E	E	3
7 PM	3	3	3	3	3	3	3
8 PM	3	3	3	3	3	3	2
9 PM	3	2	2	2	2	2	2
10 PM	3	2	2	2	2	2	2
11 PM	1	2	2	2	2	2	2

On Holidays and within Holiday Periods, all Hours shall be ‘E.’

‘E’ = maintain existing traffic operations = all available travel lanes, including exit only lanes, climbing lanes and all available shoulder widths shall be open to traffic during this period

SITE 9 I-84 EB in East Hartford Number of Through Lanes: 5 (East of Rte. 15 NB On Ramp)							
Hour Beginning	Sun	Mon	Tue	Wed	Thu	Fri	Sat
Mid	1	1	1	1	1	1	1
1 AM	1	1	1	1	1	1	1
2 AM	1	1	1	1	1	1	1
3 AM	1	1	1	1	1	1	1
4 AM	1	1	1	1	1	1	1
5 AM	1	1	1	1	1	1	1
6 AM	1	E	E	E	E	E	2
7 AM	1	E	E	E	E	E	2
8 AM	5	E	E	E	E	E	5
9 AM	5	5	5	5	5	5	5
10 AM	5	5	5	5	5	5	5
11 AM	5	5	5	5	5	5	5
Noon	5	5	5	5	5	5	5
1 PM	5	5	5	5	5	5	5
2 PM	5	5	5	5	5	5	5
3 PM	5	E	E	E	E	E	5
4 PM	5	E	E	E	E	E	5
5 PM	5	E	E	E	E	E	5
6 PM	5	5	5	5	5	5	5
7 PM	5	3	3	3	3	4	5
8 PM	5	3	3	3	3	3	5
9 PM	2	2	2	2	3	3	2
10 PM	2	2	2	2	2	3	2
11 PM	1	1	1	1	1	2	2

SITE 9 I-84 WB in East Hartford Number of Through Lanes: 5 (West of Rte. 384 WB On Ramp)							
Hour Beginning	Sun	Mon	Tue	Wed	Thu	Fri	Sat
Mid	1	1	1	1	1	1	1
1 AM	1	1	1	1	1	1	1
2 AM	1	1	1	1	1	1	1
3 AM	1	1	1	1	1	1	1
4 AM	1	1	1	1	1	1	1
5 AM	1	2	2	2	2	2	1
6 AM	1	E	E	E	E	E	2
7 AM	2	E	E	E	E	E	2
8 AM	2	E	E	E	E	E	3
9 AM	3	4	4	4	4	4	4
10 AM	3	4	4	4	4	4	4
11 AM	4	4	4	4	4	4	4
Noon	4	4	4	4	4	4	4
1 PM	4	4	4	4	4	4	4
2 PM	4	4	4	4	4	5	4
3 PM	4	E	E	E	E	E	4
4 PM	4	E	E	E	E	E	4
5 PM	4	E	E	E	E	E	3
6 PM	4	3	3	3	3	4	3
7 PM	3	2	2	2	3	3	3
8 PM	3	2	2	2	3	3	3
9 PM	3	2	2	2	2	2	2
10 PM	2	2	2	2	2	2	2
11 PM	1	1	1	1	1	2	2

On Holidays and within Holiday Periods, all Hours shall be ‘E.’

‘E’ = maintain existing traffic operations = all available travel lanes, including exit only lanes, climbing lanes and all available shoulder widths shall be open to traffic during this period

SITE 9 I-84 EB in East Hartford Number of Through Lanes: 3 (West of Rte. 15 NB On Ramp)							
Hour Beginning	Sun	Mon	Tue	Wed	Thu	Fri	Sat
Mid	1	1	1	1	1	1	1
1 AM	1	1	1	1	1	1	1
2 AM	1	1	1	1	1	1	1
3 AM	1	1	1	1	1	1	1
4 AM	1	1	1	1	1	1	1
5 AM	1	1	1	1	1	1	1
6 AM	1	E	E	E	E	E	1
7 AM	1	E	E	E	E	E	2
8 AM	1	E	E	E	E	E	2
9 AM	2	2	2	2	2	2	2
10 AM	2	2	2	2	2	2	3
11 AM	2	2	2	2	2	3	3
Noon	3	2	2	2	2	3	3
1 PM	3	2	2	2	3	3	3
2 PM	3	3	3	3	3	3	3
3 PM	3	E	E	E	E	E	3
4 PM	3	E	E	E	E	E	2
5 PM	3	E	E	E	E	E	2
6 PM	2	2	2	2	3	3	2
7 PM	2	2	2	2	2	2	2
8 PM	2	2	2	2	2	2	2
9 PM	2	1	1	1	2	2	2
10 PM	2	1	1	1	1	2	1
11 PM	1	1	1	1	1	1	1

SITE 9 I-84 WB in East Hartford Number of Through Lanes: 3 (East of Rte. 384 WB On Ramp)							
Hour Beginning	Sun	Mon	Tue	Wed	Thu	Fri	Sat
Mid	1	1	1	1	1	1	1
1 AM	1	1	1	1	1	1	1
2 AM	1	1	1	1	1	1	1
3 AM	1	1	1	1	1	1	1
4 AM	1	1	1	1	1	1	1
5 AM	1	2	2	2	2	2	1
6 AM	1	E	E	E	E	E	1
7 AM	1	E	E	E	E	E	2
8 AM	2	E	E	E	E	E	2
9 AM	2	3	3	3	3	3	3
10 AM	3	3	3	3	3	3	3
11 AM	3	3	3	3	3	3	3
Noon	3	3	3	3	3	3	3
1 PM	3	3	3	3	3	3	3
2 PM	3	3	3	3	3	3	3
3 PM	3	E	E	E	E	E	3
4 PM	3	E	E	E	E	E	3
5 PM	3	E	E	E	E	E	3
6 PM	3	2	2	2	3	3	2
7 PM	3	2	2	2	2	3	2
8 PM	2	2	2	2	2	2	2
9 PM	2	1	1	1	2	2	2
10 PM	1	1	1	1	1	1	1
11 PM	1	1	1	1	1	1	1

On Holidays and within Holiday Periods, all Hours shall be ‘E.’

‘E’ = maintain existing traffic operations = all available travel lanes, including exit only lanes, climbing lanes and all available shoulder widths shall be open to traffic during this period

SITE 10 I-91 NB in Enfield Number of Through Lanes: 3							
Hour Beginning	Sun	Mon	Tue	Wed	Thu	Fri	Sat
Mid	1	1	1	1	1	1	1
1 AM	1	1	1	1	1	1	1
2 AM	1	1	1	1	1	1	1
3 AM	1	1	1	1	1	1	1
4 AM	1	1	1	1	1	1	1
5 AM	1	1	1	1	1	1	1
6 AM	1	E	E	E	E	E	1
7 AM	1	E	E	E	E	E	2
8 AM	1	E	E	E	E	E	2
9 AM	2	2	2	2	2	3	2
10 AM	2	2	2	2	2	3	3
11 AM	2	2	2	2	2	3	3
Noon	3	2	2	3	3	3	3
1 PM	2	2	2	3	3	3	3
2 PM	2	2	2	3	3	3	3
3 PM	2	E	E	E	E	E	2
4 PM	2	E	E	E	E	E	2
5 PM	2	E	E	E	E	E	2
6 PM	2	3	3	3	3	3	2
7 PM	2	2	2	2	2	2	2
8 PM	2	2	2	2	2	2	2
9 PM	1	1	1	1	2	2	2
10 PM	1	1	1	1	1	2	1

SITE 11 Route 2 WB in Colchester Number of Through Lanes: 2							
Hour Beginning	Sun	Mon	Tue	Wed	Thu	Fri	Sat
Mid	1	1	1	1	1	1	1
1 AM	1	1	1	1	1	1	1
2 AM	1	1	1	1	1	1	1
3 AM	1	1	1	1	1	1	1
4 AM	1	1	1	1	1	1	1
5 AM	1	1	1	1	1	1	1
6 AM	1	E	E	E	E	E	1
7 AM	1	E	E	E	E	E	1
8 AM	1	E	E	E	E	E	1
9 AM	1	1	1	1	1	1	1
10 AM	1	1	1	1	1	1	1
11 AM	1	1	1	1	1	1	1
Noon	1	1	1	1	1	1	1
1 PM	1	1	1	1	1	1	1
2 PM	2	1	1	1	1	1	1
3 PM	2	E	E	E	E	E	1
4 PM	2	E	E	E	E	E	2
5 PM	2	E	E	E	E	E	2
6 PM	2	1	1	1	1	1	1
7 PM	2	1	1	1	1	1	1
8 PM	2	1	1	1	1	1	1
9 PM	1	1	1	1	1	1	1
10 PM	1	1	1	1	1	1	1

11 PM	2	1	1	1	1	2	1	11 PM	1	1	1	1	1	1	1
-------	---	---	---	---	---	---	---	-------	---	---	---	---	---	---	---

On Holidays and within Holiday Periods, all Hours shall be ‘E.’

‘E’ = maintain existing traffic operations = all available travel lanes, including exit only lanes, climbing lanes and all available shoulder widths shall be open to traffic during this period

Project 0148-0210 I-91 NB in Wallingford Number of Through Lanes: 3							
Hour Beginning	Sun	Mon	Tue	Wed	Thu	Fri	Sat
Mid	1	1	1	1	1	1	1
1 AM	1	1	1	1	1	1	1
2 AM	1	1	1	1	1	1	1
3 AM	1	1	1	1	1	1	1
4 AM	1	1	1	1	1	1	1
5 AM	1	1	1	1	1	1	1
6 AM	1	E	E	E	E	E	1
7 AM	1	E	E	E	E	E	2
8 AM	1	E	E	E	E	E	2
9 AM	1	2	2	2	2	2	2
10 AM	2	2	2	2	2	2	2
11 AM	2	2	2	2	2	2	2
Noon	2	2	2	2	2	2	2
1 PM	2	2	2	2	2	2	2
2 PM	2	2	2	2	2	2	2
3 PM	2	E	E	E	E	E	2
4 PM	2	E	E	E	E	E	2
5 PM	2	E	E	E	E	E	2
6 PM	2	2	2	2	2	2	2
7 PM	2	2	2	2	2	2	1
8 PM	2	1	1	1	2	2	1
9 PM	1	1	1	1	1	2	1
10 PM	1	1	1	1	1	1	1

11 PM	1	1	1	1	1	1	1
-------	---	---	---	---	---	---	---

On Holidays and within Holiday Periods, all Hours shall be ‘E.’

‘E’ = maintain existing traffic operations = all available travel lanes, including exit only lanes, climbing lanes and all available shoulder widths shall be open to traffic during this period

Route: 95 NB							
Location: ½ mile south of Exit 89 to Exit 90							
Number of Through Lanes: 2							
Hour Beginning	Mon	Tue	Wed	Thu	Fri	Sat	Sun
Mid	1	1	1	1	1	1	1
1 AM	1	1	1	1	1	1	1
2 AM	1	1	1	1	1	1	1
3 AM	1	1	1	1	1	1	1
4 AM	1	1	1	1	1	1	1
5 AM	1	1	1	1	1	1	1
6 AM	E	E	E	E	E	2	1
7 AM	E	E	E	E	E	2	1
8 AM	E	E	E	E	E	E	2
9 AM	1	1	1	1	1	E	2
10 AM	1	1	1	1	1	E	2
11 AM	1	1	1	1	1	E	2
Noon	1	1	1	1	2	E	2
1 PM	1	1	1	1	2	2	2
2 PM	1	1	1	2	2	2	2
3 PM	E	E	E	E	E	2	2
4 PM	E	E	E	E	E	2	2
5 PM	E	E	E	E	E	2	2
6 PM	1	1	2	2	2	2	2
7 PM	1	1	1	2	2	1	2
8 PM	1	1	1	1	2	1	1
9 PM	1	1	1	1	1	1	1
10 PM	1	1	1	1	1	1	1
11 PM	1	1	1	1	1	1	1

Route: 95 SB							
Exit 89 to Exit 90							
Number of Through Lanes: 2							
Hour Beginning	Mon	Tue	Wed	Thu	Fri	Sat	Sun
Mid	1	1	1	1	1	1	1
1 AM	1	1	1	1	1	1	1
2 AM	1	1	1	1	1	1	1
3 AM	1	1	1	1	1	1	1
4 AM	1	1	1	1	1	1	1
5 AM	E	E	E	E	E	1	1
6 AM	E	E	E	E	E	1	1
7 AM	E	E	E	E	E	2	1
8 AM	E	E	E	E	E	2	2
9 AM	2	2	2	2	2	2	2
10 AM	2	2	2	2	2	2	E
11 AM	2	2	2	2	2	2	E
Noon	2	2	2	2	2	2	E
1 PM	2	2	2	2	2	2	E
2 PM	2	2	2	2	2	2	E
3 PM	E	E	E	E	E	2	E
4 PM	E	E	E	E	E	2	E
5 PM	E	E	E	E	E	2	2
6 PM	1	1	1	1	2	2	2
7 PM	1	1	1	1	2	2	2
8 PM	1	1	1	1	1	1	1
9 PM	1	1	1	1	1	1	1
10 PM	1	1	1	1	1	1	1
11 PM	1	1	1	1	1	1	1

On Holidays and within Holiday Periods, all Hours shall be ‘E.’

‘E’ = maintain existing traffic operations = all available travel lanes, including exit only lanes, climbing lanes and all available shoulder widths shall be open to traffic during this period

Route: 95 NB								Route: 95 SB							
Location: Exit 90 to Rhode Island State Line								Location: Exit 90 to Rhode Island State Line							
Number of Through Lanes: 2								Number of Through Lanes: 2							
Hour Beginning	Mon	Tue	Wed	Thu	Fri	Sat	Sun	Hour Beginning	Mon	Tue	Wed	Thu	Fri	Sat	Sun
Mid	1	1	1	1	1	1	1	Mid	1	1	1	1	1	1	1
1 AM	1	1	1	1	1	1	1	1 AM	1	1	1	1	1	1	1
2 AM	1	1	1	1	1	1	1	2 AM	1	1	1	1	1	1	1
3 AM	1	1	1	1	1	1	1	3 AM	1	1	1	1	1	1	1
4 AM	1	1	1	1	1	1	1	4 AM	1	1	1	1	1	1	1
5 AM	1	1	1	1	1	1	1	5 AM	E	E	E	E	E	1	1
6 AM	E	E	E	E	E	1	1	6 AM	E	E	E	E	E	1	1
7 AM	E	E	E	E	E	2	1	7 AM	E	E	E	E	E	1	1
8 AM	E	E	E	E	E	2	1	8 AM	E	E	E	E	E	2	2
9 AM	2	2	2	2	2	2	2	9 AM	2	2	2	2	2	2	2
10 AM	2	2	2	2	2	2	2	10 AM	2	2	2	2	2	2	2
11 AM	2	2	2	2	2	2	2	11 AM	2	2	2	2	2	2	2
Noon	2	2	2	2	2	2	2	Noon	2	2	2	2	2	2	2
1 PM	2	2	2	2	2	2	2	1 PM	2	2	2	2	2	2	2
2 PM	2	2	2	2	2	2	2	2 PM	2	2	2	2	2	2	2
3 PM	E	E	E	E	E	2	2	3 PM	E	E	E	E	E	2	2
4 PM	E	E	E	E	E	2	2	4 PM	E	E	E	E	E	2	2
5 PM	E	E	E	E	E	2	2	5 PM	E	E	E	E	E	2	2
6 PM	1	1	1	1	2	1	1	6 PM	1	1	1	1	2	1	2
7 PM	1	1	1	1	2	1	1	7 PM	1	1	1	1	1	1	1
8 PM	1	1	1	1	1	1	1	8 PM	1	1	1	1	1	1	1
9 PM	1	1	1	1	1	1	1	9 PM	1	1	1	1	1	1	1
10 PM	1	1	1	1	1	1	1	10 PM	1	1	1	1	1	1	1
11 PM	1	1	1	1	1	1	1	11 PM	1	1	1	1	1	1	1

On Holidays and within Holiday Periods, all Hours shall be ‘E.’

‘E’ = maintain existing traffic operations = all available travel lanes, including exit only lanes, climbing lanes and all available shoulder widths shall be open to traffic during this period

Route: 95 NB Location: Goldstar Bridge to Exit 89 Number of Through Lanes: 3								Route: 95 SB Location: Goldstar Bridge to Exit 89 Number of Through Lanes: 3							
Hour Beginning	Mon	Tue	Wed	Thu	Fri	Sat	Sun	Hour Beginning	Mon	Tue	Wed	Thu	Fri	Sat	Sun
Mid	1	1	1	1	1	1	1	Mid	2	2	2	2	2	1	1
1 AM	1	1	1	1	1	1	1	1 AM	2	2	2	2	2	1	1
2 AM	1	1	1	1	1	1	1	2 AM	2	2	2	2	2	1	1
3 AM	1	1	1	1	1	1	1	3 AM	2	2	2	2	2	1	1
4 AM	1	1	1	1	1	1	1	4 AM	2	2	2	2	2	1	1
5 AM	1	1	1	1	1	1	1	5 AM	E	E	E	E	E	1	1
6 AM	E	E	E	E	E	2	1	6 AM	E	E	E	E	E	1	1
7 AM	E	E	E	E	E	3	2	7 AM	E	E	E	E	E	2	1
8 AM	E	E	E	E	E	3	2	8 AM	E	E	E	E	E	2	2
9 AM	2	2	2	2	2	3	3	9 AM	2	2	2	2	2	2	2
10 AM	2	2	2	2	2	3	3	10 AM	2	2	2	2	2	2	3
11 AM	2	2	2	2	2	3	3	11 AM	2	2	2	2	2	2	3
Noon	2	2	2	2	2	3	3	Noon	2	2	2	2	2	2	3
1 PM	2	2	2	2	2	3	3	1 PM	2	2	2	2	2	2	3
2 PM	2	2	2	2	E	3	3	2 PM	2	2	2	2	2	2	3
3 PM	E	E	E	E	E	3	3	3 PM	E	E	E	E	E	2	3
4 PM	E	E	E	E	E	2	2	4 PM	E	E	E	E	E	2	3
5 PM	E	E	E	E	E	2	2	5 PM	E	E	E	E	E	2	2
6 PM	2	2	2	2	E	2	2	6 PM	2	2	2	2	2	2	2
7 PM	2	2	2	2	2	2	2	7 PM	1	1	1	1	2	2	2
8 PM	1	1	1	1	1	1	2	8 PM	1	1	1	1	1	1	1
9 PM	1	1	1	1	1	1	1	9 PM	1	1	1	1	1	1	1
10 PM	1	1	1	1	1	1	1	10 PM	1	1	1	1	1	1	1
11 PM	1	1	1	1	1	1	1	11 PM	1	1	1	1	1	1	1

On Holidays and within Holiday Periods, all Hours shall be ‘E.’

'E' = maintain existing traffic operations = all available travel lanes, including exit only lanes, climbing lanes and all available shoulder widths shall be open to traffic during this period

Route: 95 NB Location: Goldstar Bridge Number of Through Lanes: 4							
Hour Beginning	Mon	Tue	Wed	Thu	Fri	Sat	Sun
Mid	2	2	2	2	2	2	2
1 AM	2	2	2	2	2	2	2
2 AM	2	2	2	2	2	2	2
3 AM	2	2	2	2	2	2	2
4 AM	2	2	2	2	2	2	2
5 AM	2	2	2	2	2	2	2
6 AM	E	E	E	E	E	3	2
7 AM	E	E	E	E	E	4	3
8 AM	E	E	E	E	E	4	3
9 AM	3	3	3	3	3	4	4
10 AM	3	3	3	3	3	4	4
11 AM	3	3	3	3	3	4	4
Noon	3	3	3	3	3	4	4
1 PM	3	3	3	3	3	4	4
2 PM	3	3	3	3	E	4	4
3 PM	E	E	E	E	E	4	4
4 PM	E	E	E	E	E	3	3
5 PM	E	E	E	E	E	3	3
6 PM	3	3	3	3	E	3	3
7 PM	3	3	3	3	3	3	3
8 PM	2	2	2	2	2	2	3
9 PM	2	2	2	2	2	2	2
10 PM	2	2	2	2	2	2	2
11 PM	2	2	2	2	2	2	2

Route: 95 SB Location: Goldstar Bridge Number of Through Lanes: 4							
Hour Beginning	Mon	Tue	Wed	Thu	Fri	Sat	Sun
Mid	3	3	3	3	3	2	2
1 AM	3	3	3	3	3	2	2
2 AM	3	3	3	3	3	2	2
3 AM	3	3	3	3	3	2	2
4 AM	3	3	3	3	3	2	2
5 AM	E	E	E	E	E	2	2
6 AM	E	E	E	E	E	2	2
7 AM	E	E	E	E	E	3	2
8 AM	E	E	E	E	E	3	1
9 AM	3	3	3	3	3	3	3
10 AM	3	3	3	3	3	3	4
11 AM	3	3	3	3	3	3	4
Noon	3	3	3	3	3	3	4
1 PM	3	3	3	3	3	3	4
2 PM	3	3	3	3	3	3	4
3 PM	E	E	E	E	E	3	4
4 PM	E	E	E	E	E	3	4
5 PM	E	E	E	E	E	3	3
6 PM	3	3	3	3	3	3	3
7 PM	2	2	2	2	3	3	3
8 PM	2	2	2	2	2	2	2
9 PM	2	2	2	2	2	2	2
10 PM	2	2	2	2	2	2	2
11 PM	2	2	2	2	2	2	2

On Holidays and within Holiday Periods, all Hours shall be ‘E.’

‘E’ = maintain existing traffic operations = all available travel lanes, including exit only lanes, climbing lanes and all available shoulder widths shall be open to traffic during this period