

WALL REPAIRS TO
SAXE MIDDLE SCHOOL
MEDIA CENTER

468 South Ave,
New Canaan, CT 06840

New Canaan Public Schools
39 Locust Ave.
New Canaan, CT 06840

MEDIA CENTER WALL REPAIR
MAY 22, 2018
PROJECT DIRECTORY

ENGINEERS

MACCHI ENGINEERS

44 Gillett Street
Hartford, Connecticut 06105
860.549.6190

**ARCHITECTS &
INTERIOR DESIGN**

JCJ ARCHITECTURE

120 HUYSHOPE AVENUE
SUITE 400
HARTFORD, CT 06106
860.247.9226

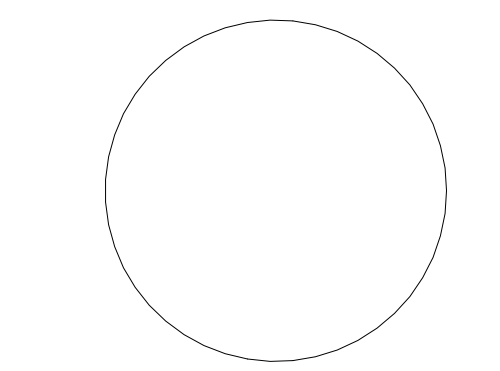
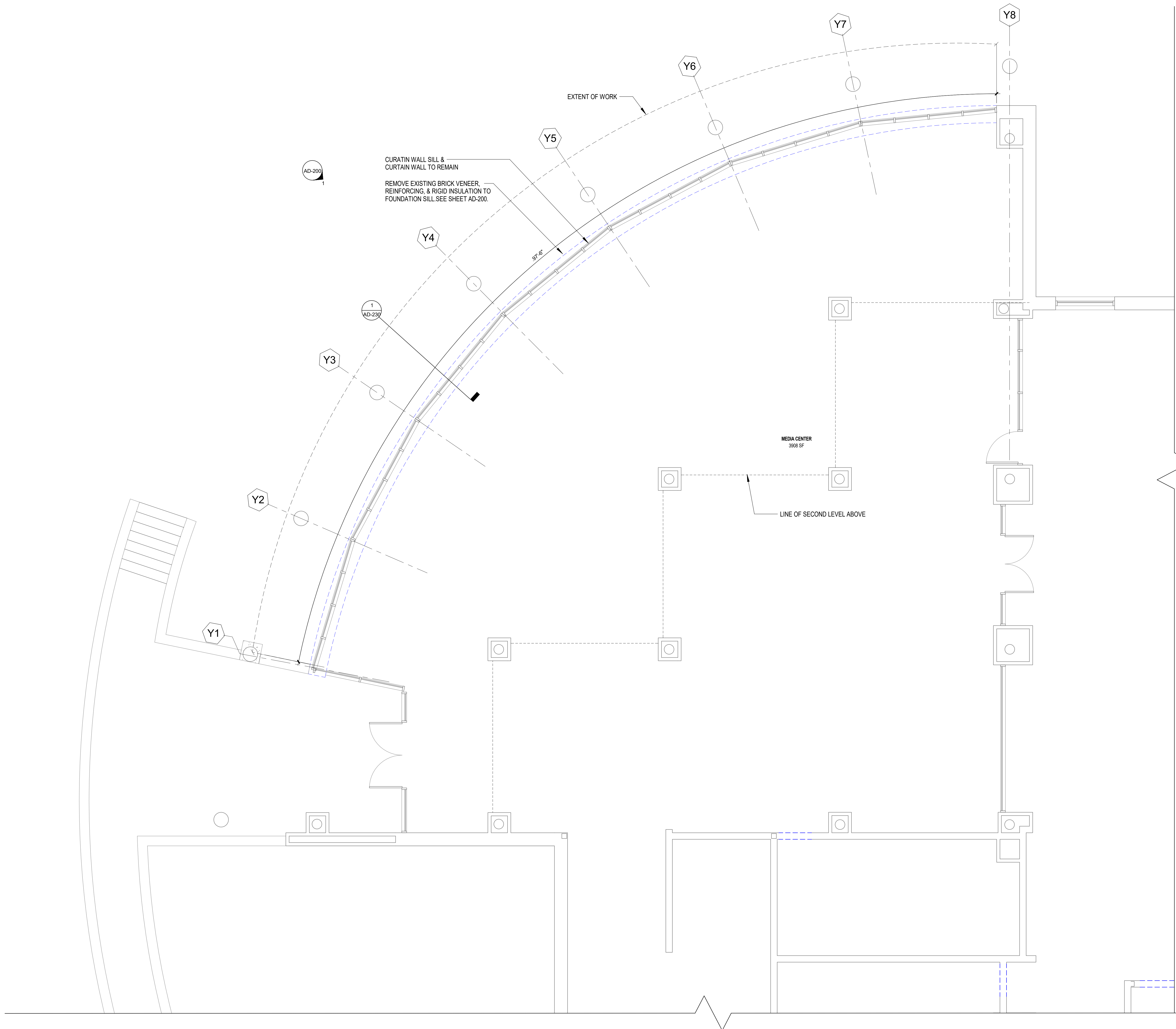
SAXE MIDDLE SCHOOL MEDIA CENTER WALL REPAIRS

468 South Ave.
New Canaan, CT 06840

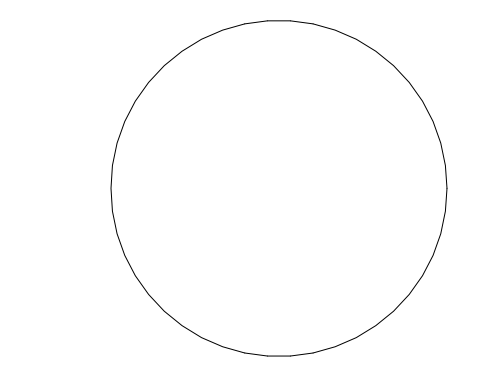
JCJ ARCHITECTURE
120 HUYSHOPE AVENUE
SUITE 400
HARTFORD, CT 06106
860.247.9228

© 2018 JCJ Architecture

CONSULTANTS:
ENGINEERS
MACCHI ENGINEERS
44 Clifton Street
Hartford, Connecticut 06105
860.549.6190



MEDIA CENTER WALL
REPAIR
MAY 22, 2018



P.I.C. _____ L.D. _____
P.M. _____ P.A. _____

ISSUE# MAY 22, 2018
JOB H18025.00
DRAWN JME
SCALE 1/4" = 1'-0"

REVISIONS:

NO.	DATE	DESCRIPTION

**MAIN LEVEL
DEMOLITION PLAN**

AD-101

1 LEVEL 1 DEMOLITION PLAN
1/4" = 1'-0"

SAXE MIDDLE SCHOOL MEDIA CENTER WALL REPAIRS

468 South Ave,
New Canaan, CT 06840

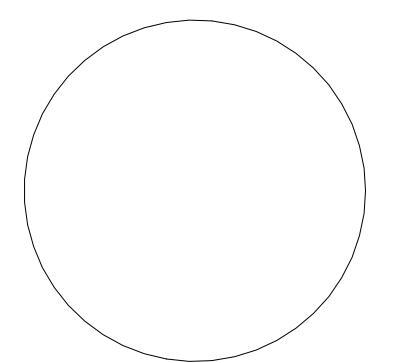
JCJARCHITECTURE

120 HUYSHOPE AVENUE
SUITE 400
HARTFORD, CT 06106
860.247.9226

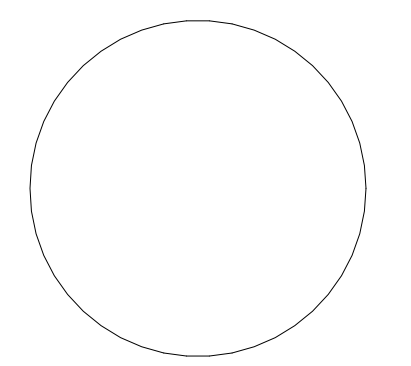
© 2018 JCJ Architecture

CONSULTANTS:

ENGINEERS
MACCHI ENGINEERS
44 Collett Street
Hartford, Connecticut 06105
860.549.6190



MEDIA CENTER WALL
REPAIR
MAY 22, 2018



P.I.C. _____ L.D. _____
P.M. _____ P.A. _____

ISSUE# MAY 22, 2018

JOB H18025.00

DRAWN JME

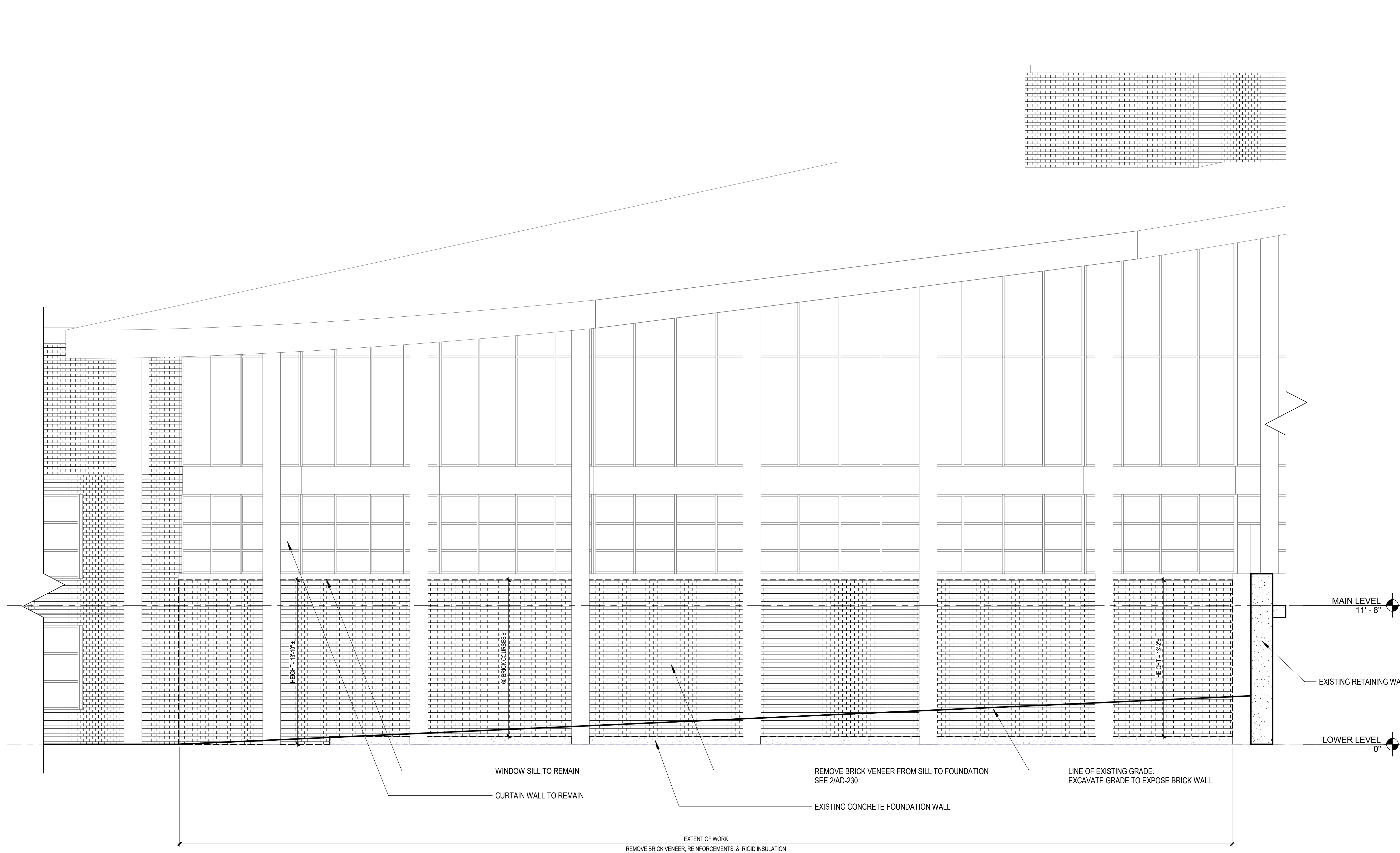
SCALE 1/4" = 1'-0"

REVISIONS:

NO.	DATE	REVISION

DEMOLITION
ELEVATIONS

AD-200



1 DEMOLITION ELEVATION- WEST
1/4" = 1'-0"

SAXE MIDDLE SCHOOL MEDIA CENTER WALL REPAIRS

468 South Ave,
New Canaan, CT 06840

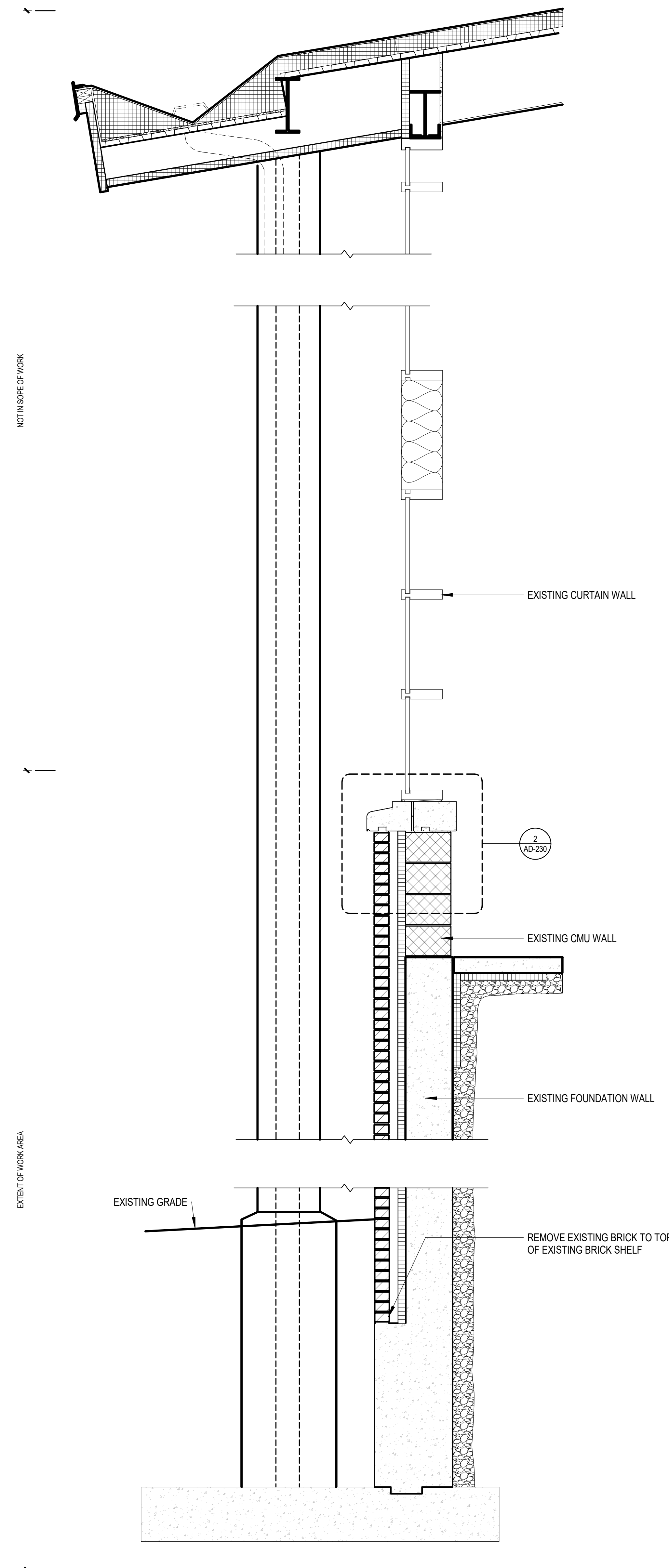
JCJ ARCHITECTURE
120 HUYSHOPE AVENUE
SUITE 400
HARTFORD, CT 06106
860.247.9226

© 2018 JCJ Architecture

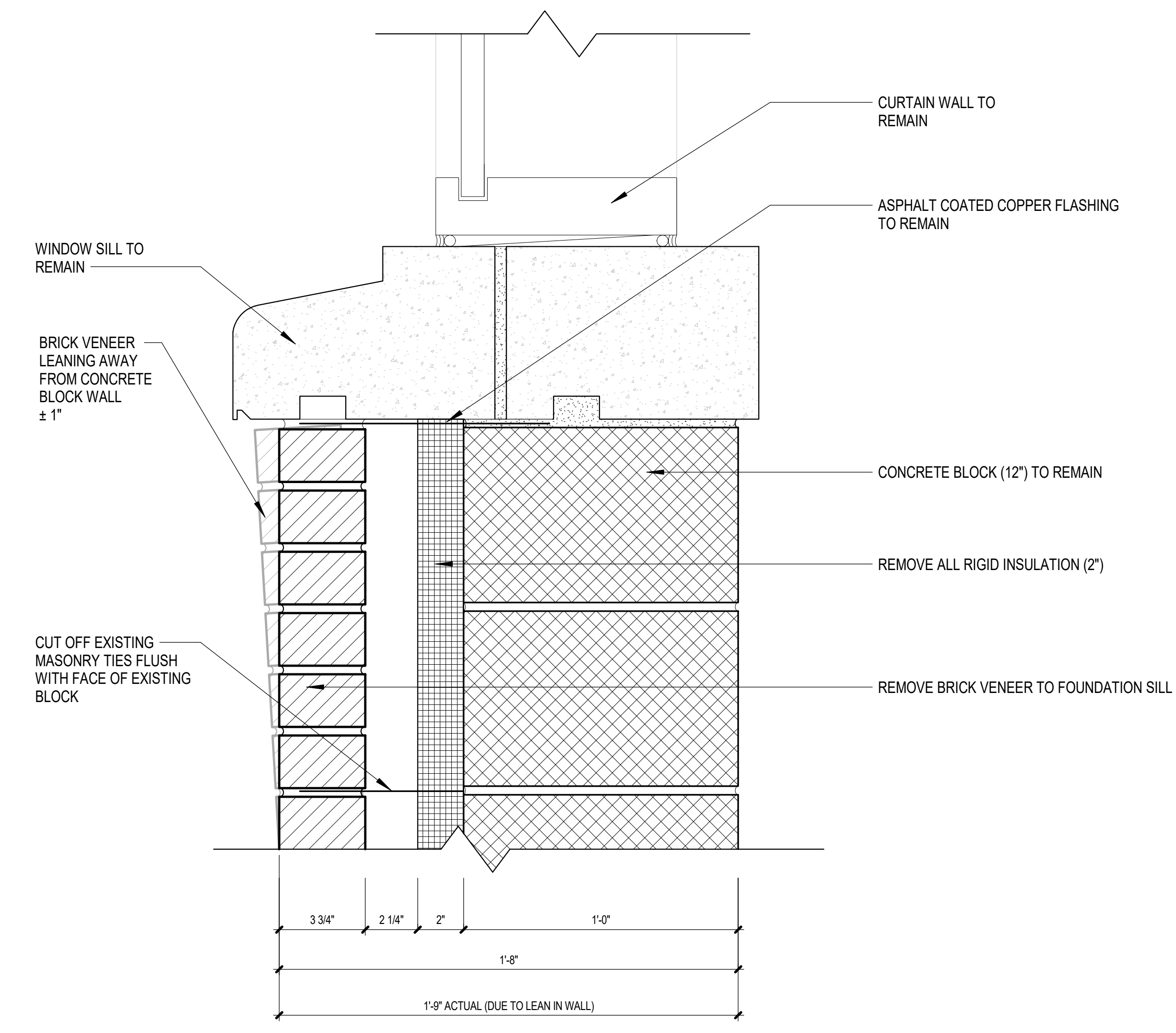
CONSULTANTS:
ENGINEERS
MACCHI ENGINEERS
44 GILLET STREET
HARTFORD, CONNECTICUT 06105
860.549.6190

CONSTRUCTION SEQUENCE:

- 1) REMOVE EXISTING GRADES TO EXPOSE BOTTOM OF EXISTING BRICK.
- 2) BEFORE MASS DEMOLITION OF EXISTING BRICK VENEER, INSTALL SS SUPPORT ANGLES BELOW EXISTING PRECAST SILLS.
- 3) REMOVE EXISTING BRICK, INSULATION, AND EXISTING MASONRY TIES.
- 4) INSTALL NEW BRICK VENEER, FLASHING, INSULATION, ANCHORS, AND WEEPS.
- 5) REGRADE SITE SO THAT NEW GRADES COVER ALL EXPOSED CONCRETE. DO NOT GRADE ABOVE NEW BASE WEEP HOLES.
- 6) CAULK ALL JOINTS AS SPECIFIED.



1 EXISTING WALL SECTION
3/4" = 1'-0"



2 DEMOLITION SILL DETAIL
3" = 1'-0"

MEDIA CENTER WALL
REPAIR
MAY 22, 2018

P.I.C.	L.D.
P.M.	P.A.
ISSUE# MAY 22, 2018	
JOB H18025.00	
DRAWN JME	
SCALE As indicated	

REVISIONS:

DEMOLITION SECTION & DETAILS

AD-230

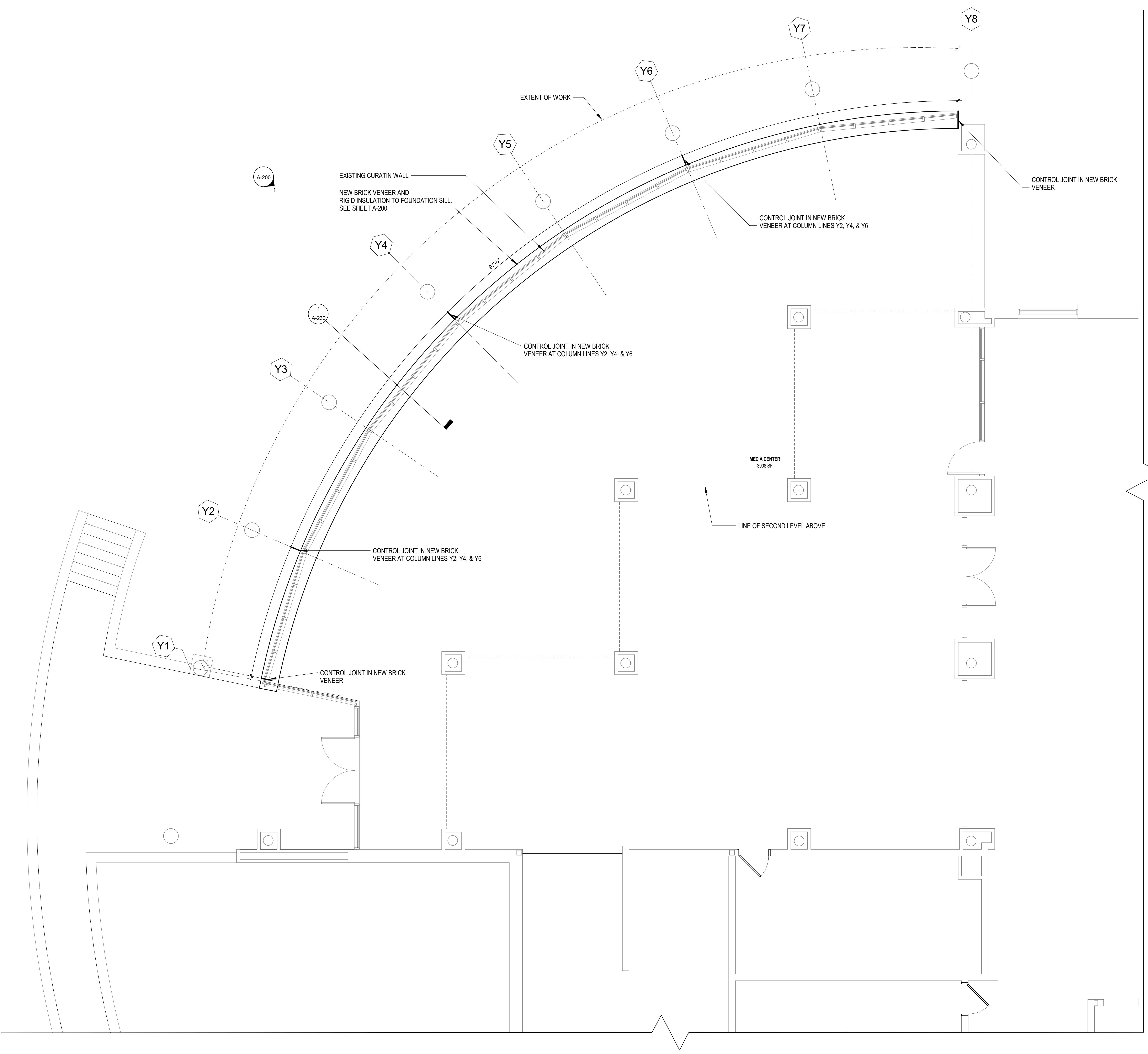
SAXE MIDDLE SCHOOL MEDIA CENTER WALL REPAIRS

468 South Ave,
New Canaan, CT 06840

JCJ ARCHITECTURE
120 HUYSHOPE AVENUE
SUITE 400
HARTFORD, CT 06106
860.247.9226

© 2018 JCJ Architecture

CONSULTANTS:
ENGINEERS:
MACCHI ENGINEERS
44 Gilett Street
Hartford, Connecticut 06105
860.549.6190



MEDIA CENTER WALL REPAIR
MAY 22, 2018

P.I.C.	_____	L.D.	_____
P.M.	_____	P.A.	_____
ISSUE	MAY 22, 2018		
JOB	H18025.00		
DRAWN	JME		
SCALE	1/4" = 1'-0"		

REVISIONS:

1				
2				
3				
4				
5				
6				
7				
8				
9				
10				
11				
12				

1 LEVEL 1 PLAN
1/4" = 1'-0"

MAIN LEVEL FLOOR PLAN

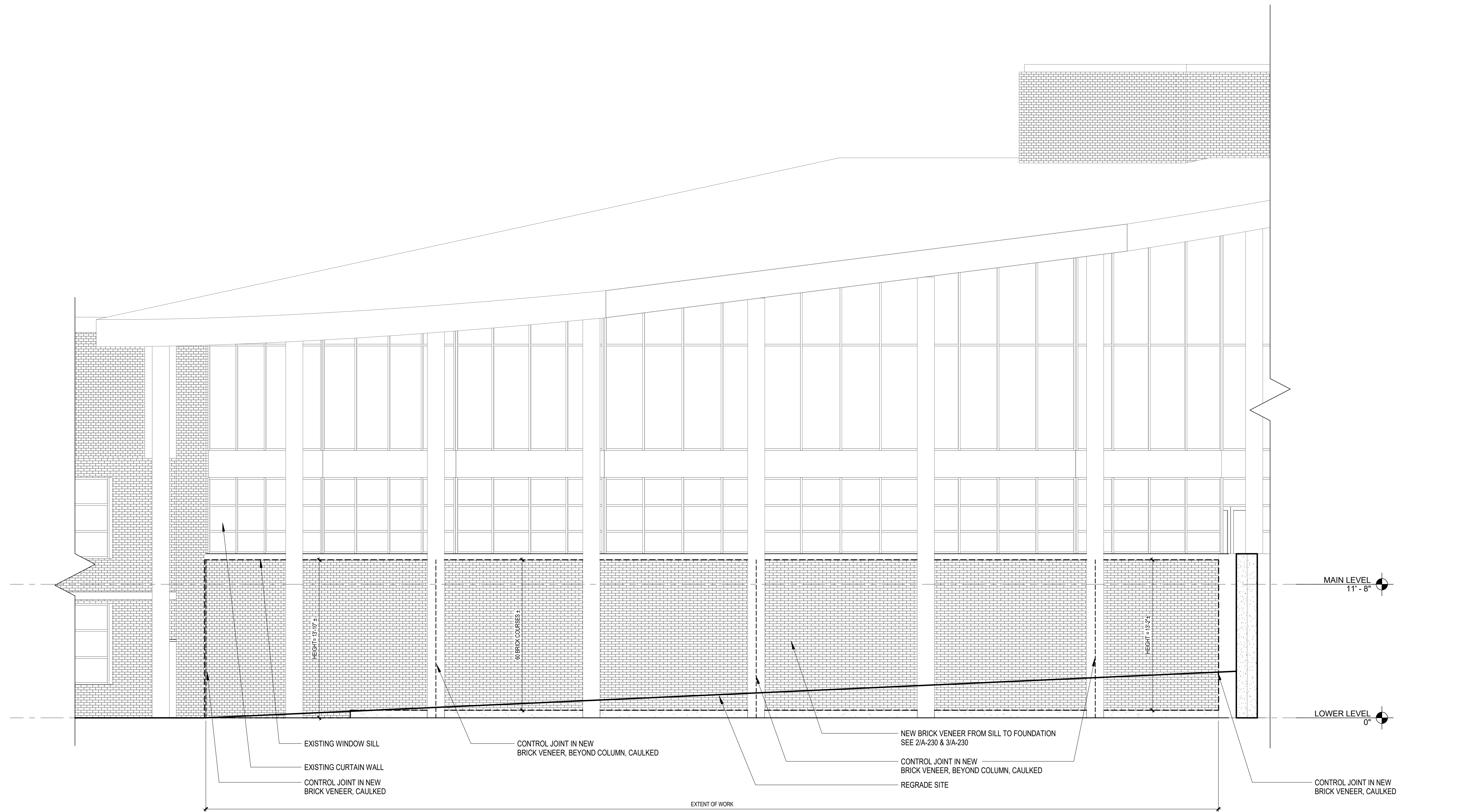
SAXE MIDDLE SCHOOL MEDIA CENTER WALL REPAIRS

468 South Ave,
New Canaan, CT 06840

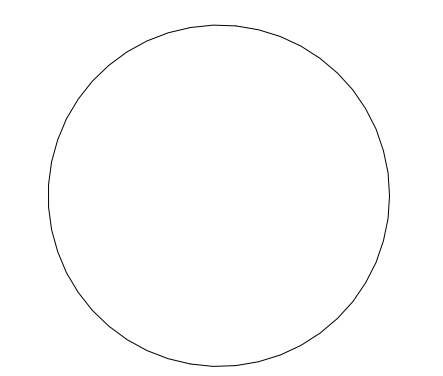
JCJ ARCHITECTURE
120 HUYSHOPE AVENUE
SUITE 400
HARTFORD, CT 06106
860.247.9226

© 2018 JCJ Architecture

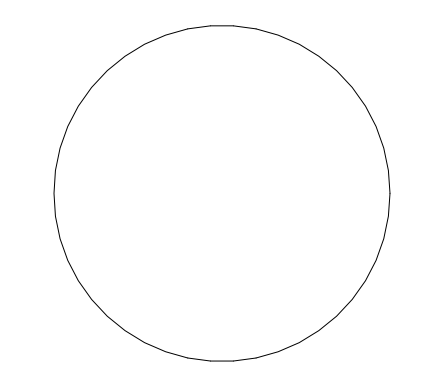
CONSULTANTS:
ENGINEERS
MACCHI ENGINEERS
44 GILLET STREET
HARTFORD, CONNECTICUT 06105
860.549.6190



1 ELEVATION- WEST
1/4" = 1'-0"



MEDIA CENTER WALL
REPAIR
MAY 22, 2018



P.I.C. _____ L.D. _____
P.M. _____ P.A. _____

ISSUE# MAY 22, 2018
JOB H18025.00
DRAWN JME
SCALE 1/4" = 1'-0"

REVISIONS:

NO.	DESCRIPTION

EXTERIOR
ELEVATION

SAXE MIDDLE SCHOOL MEDIA CENTER WALL REPAIRS

468 South Ave.
New Canaan, CT 06840

JCJ ARCHITECTURE
120 HUYSHOPE AVENUE
SUITE 400
HARTFORD, CT 06106
860.247.9226

© 2018 J.C.J. Architecture

CONSULTANTS:
ENGINEERS
MACCHI ENGINEERS
44 Gillet Street
Hartford, Connecticut 06105
860.549.6190

MEDIA CENTER WALL REPAIR
MAY 22, 2018

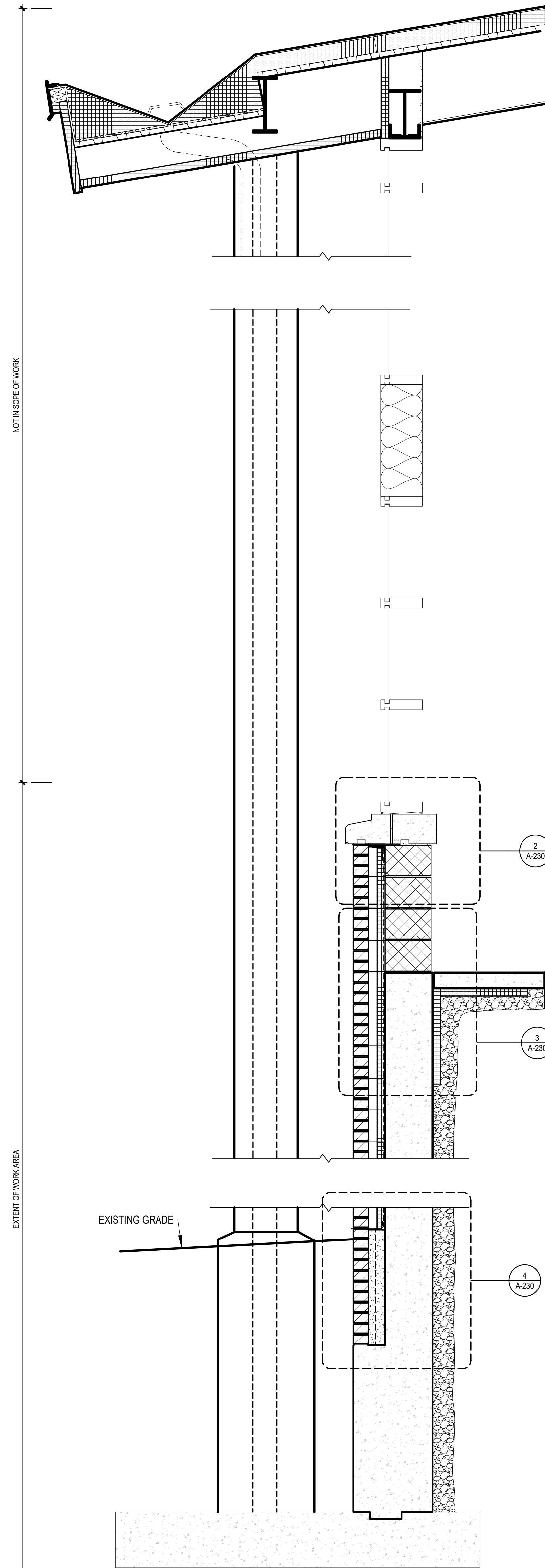
P.I.C. _____ L.D. _____
P.M. _____ P.A. _____

ISSUE# MAY 22, 2018
JOB H18025.00
DRAWN JME
SCALE As indicated

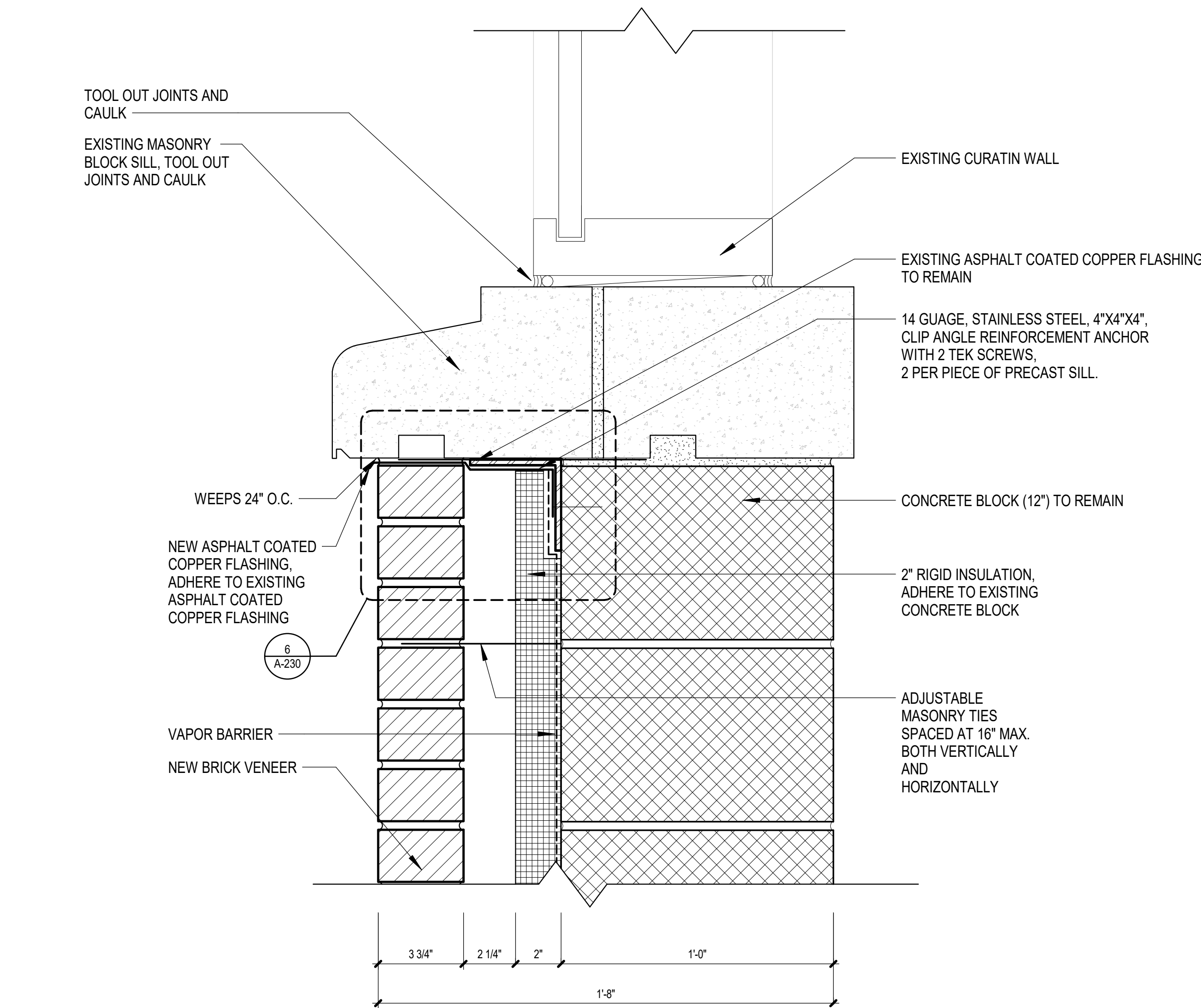
REVISIONS:

WALL SECTIONS & DETAILS

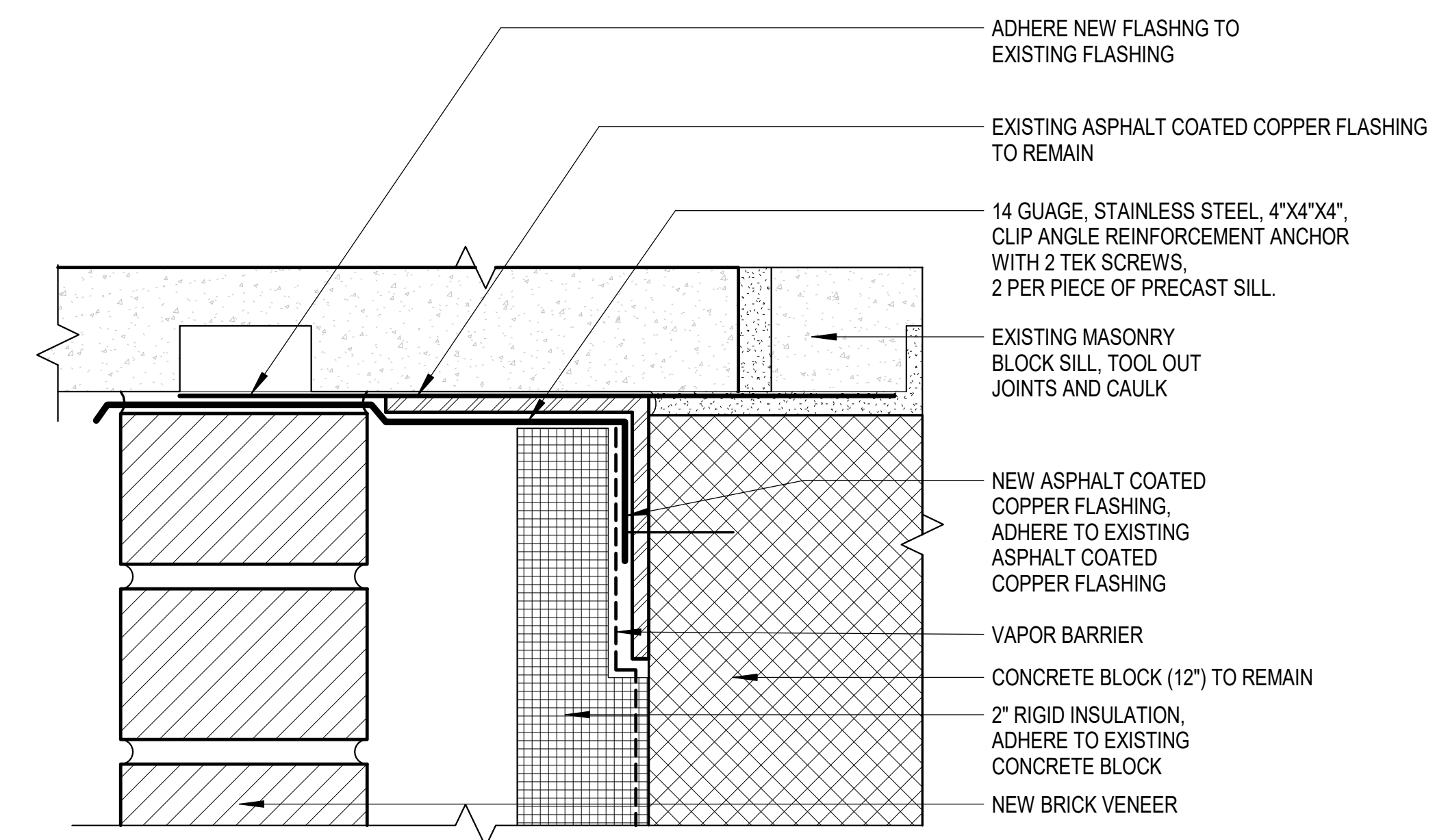
A-230



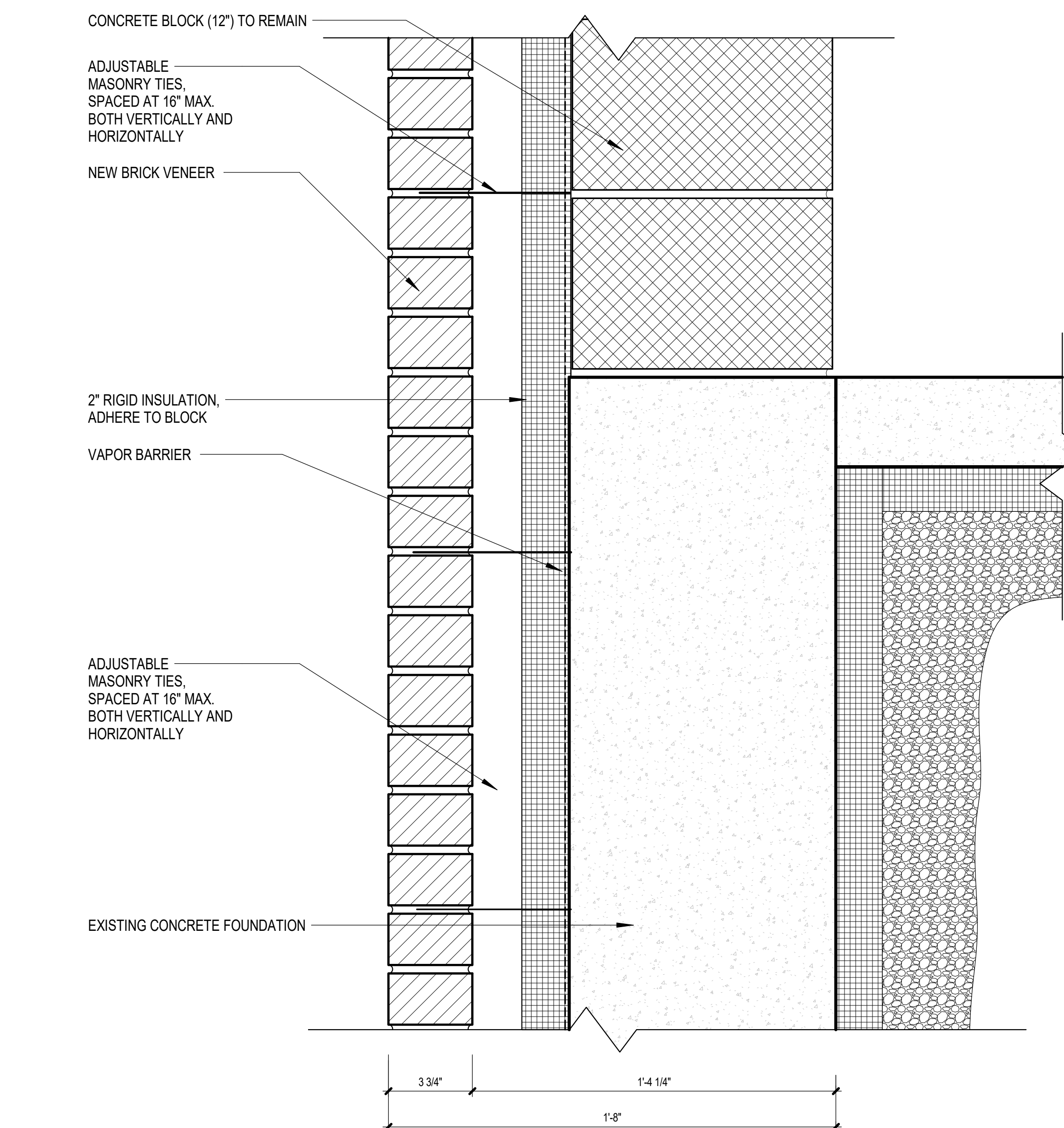
1 REPAIRED WALL SECTION
3/4" = 1'-0"



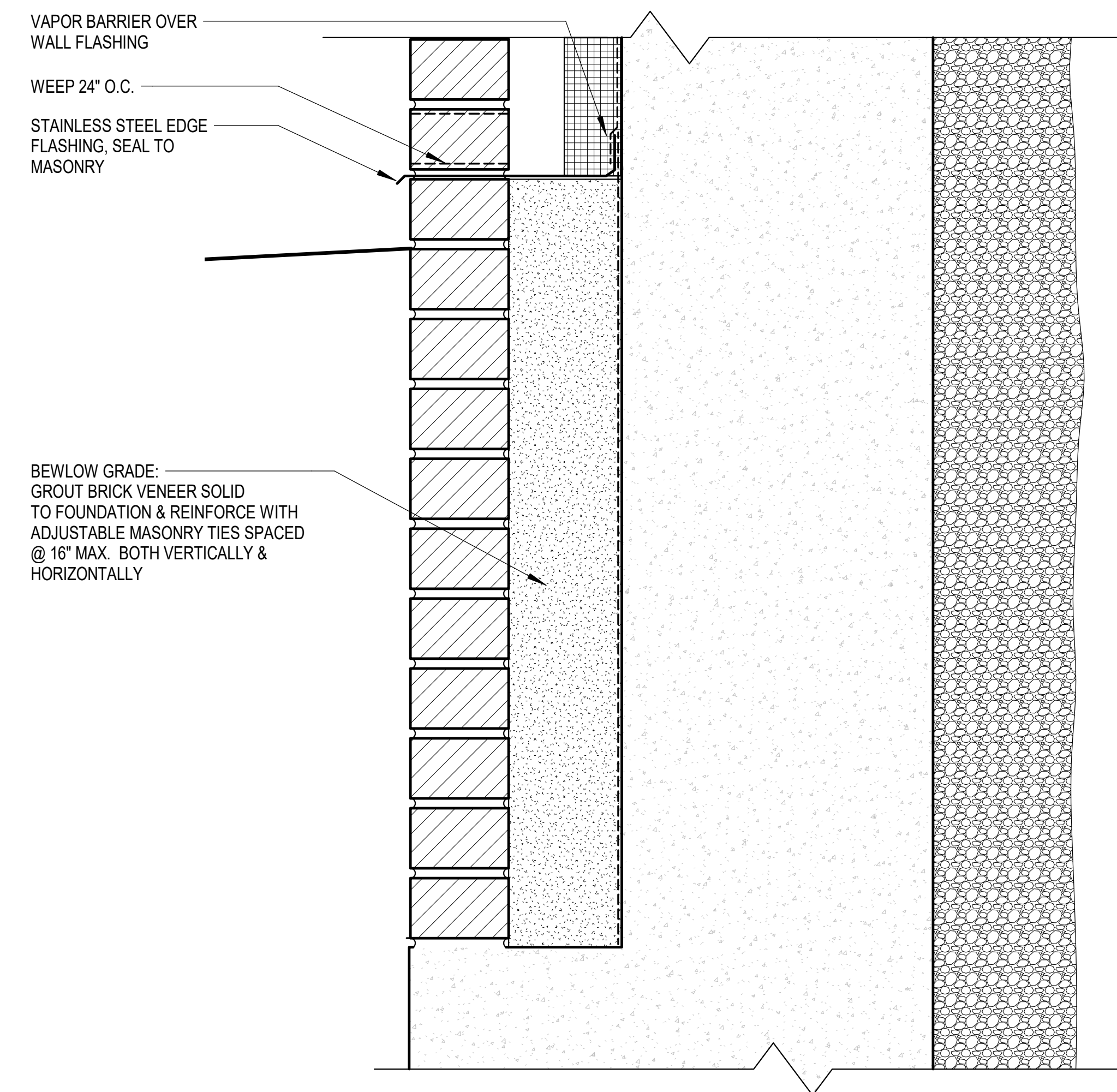
2 REPAIRED SILL DETAIL
3" = 1'-0"



6 REPAIRED SILL DETAIL - ENLARGED
6" = 1'-0"



3 REPAIRED BRICK VENEER @ FLOOR SLAB
3" = 1'-0"



4 BRICK SHELF DETAIL
3" = 1'-0"