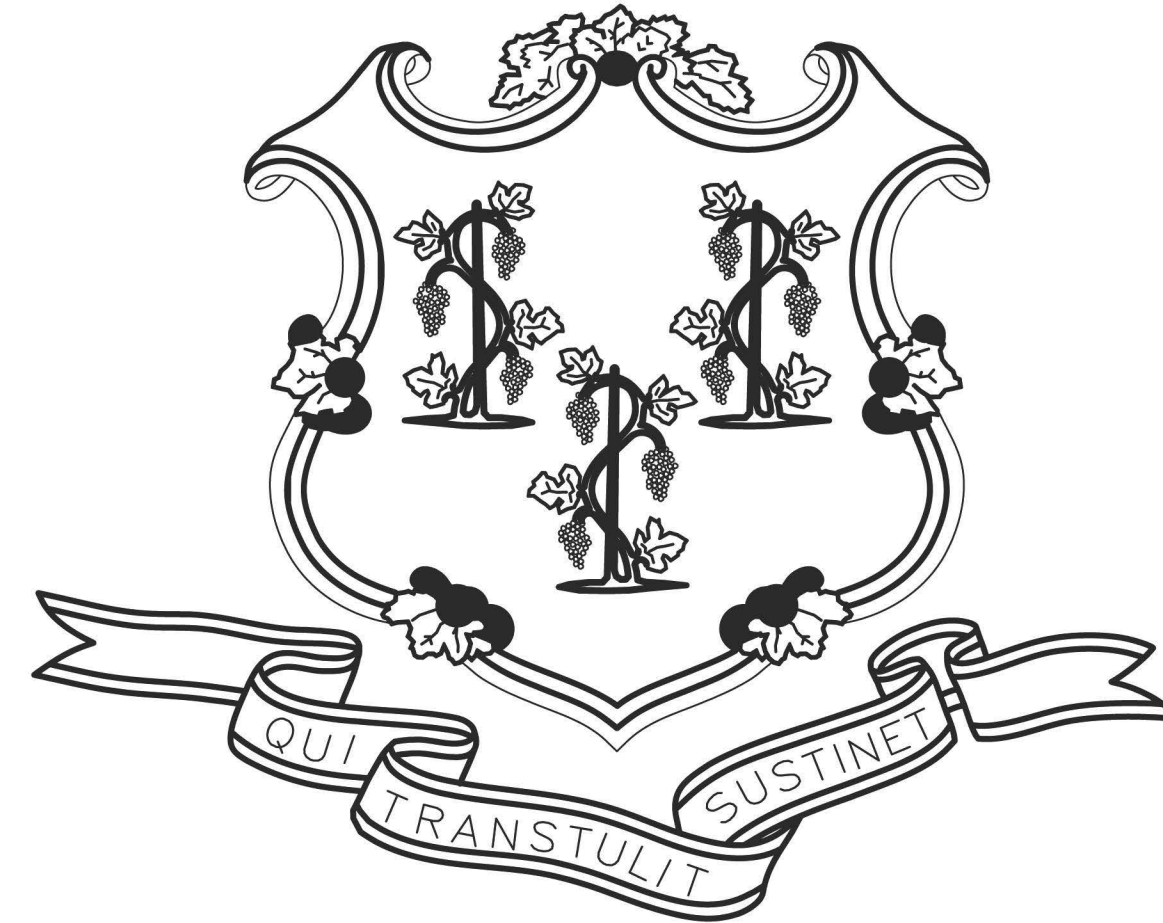


STATE OF CONNECTICUT



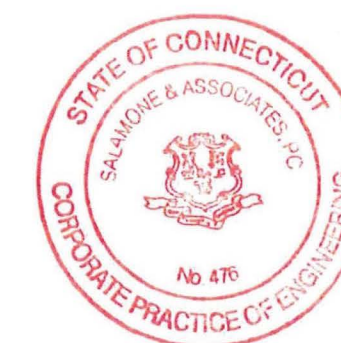
GOVERNOR NED LAMONT

DEPARTMENT OF ADMINISTRATIVE SERVICES
CONNECTICUT STATE LIBRARY
JOSH GEBALLE
COMMISSIONER

LIBRARY FOR THE BLIND AND PHYSICALLY HANDICAPPED
198 West Street, Rocky Hill, Connecticut 06067
HVAC REPLACEMENT

PROJECT NO. BI-SS-117
JULY 22, 2019

ENGINEERS
SALAMONE & ASSOCIATES, P.C.
116 NORTH PLAINS INDUSTRIAL ROAD
WALLINGFORD, CT 06492
(203) 281-6895



CONTRACT DRAWINGS

NO.	TITLE
	COVER SHEET
DME-1	MAIN FLOOR MECHANICAL/ELECTRICAL DEMOLITION PLAN
DME-2	ROOF MECHANICAL/ELECTRICAL DEMOLITION PLAN
ME-1	MAIN FLOOR MECHANICAL/ELECTRICAL PLAN
ME-2	ROOF MECHANICAL/ELECTRICAL PLAN
ME-3	MECHANICAL/ELECTRICAL DETAILS
ME-4	MECHANICAL/ELECTRICAL SCHEDULES, NOTES, ETC.

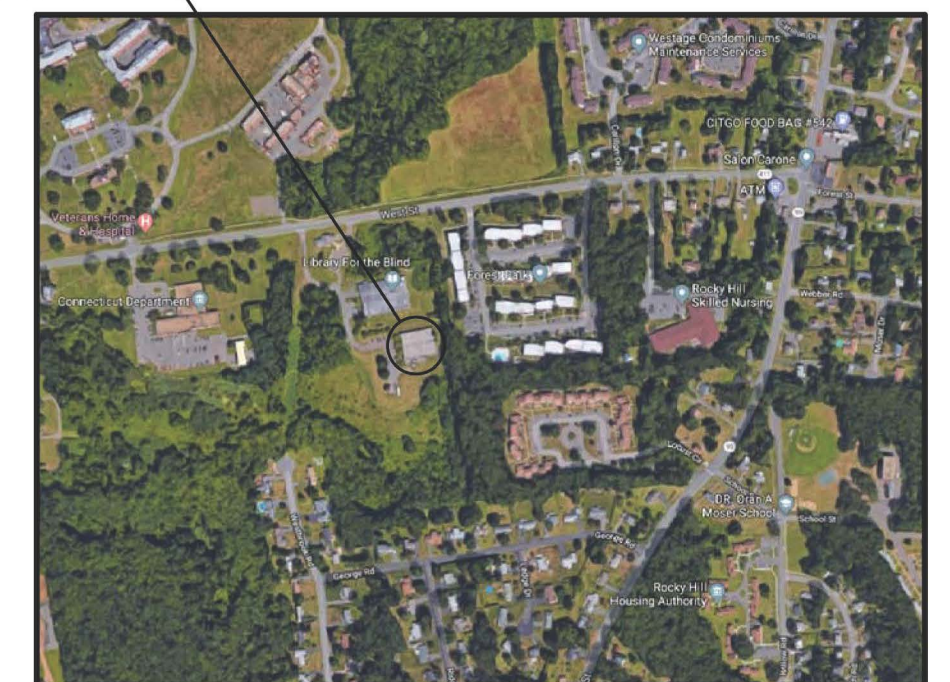
D.C.S BUILDING NUMBER 53889

PROJECT SITE



SITE PLAN

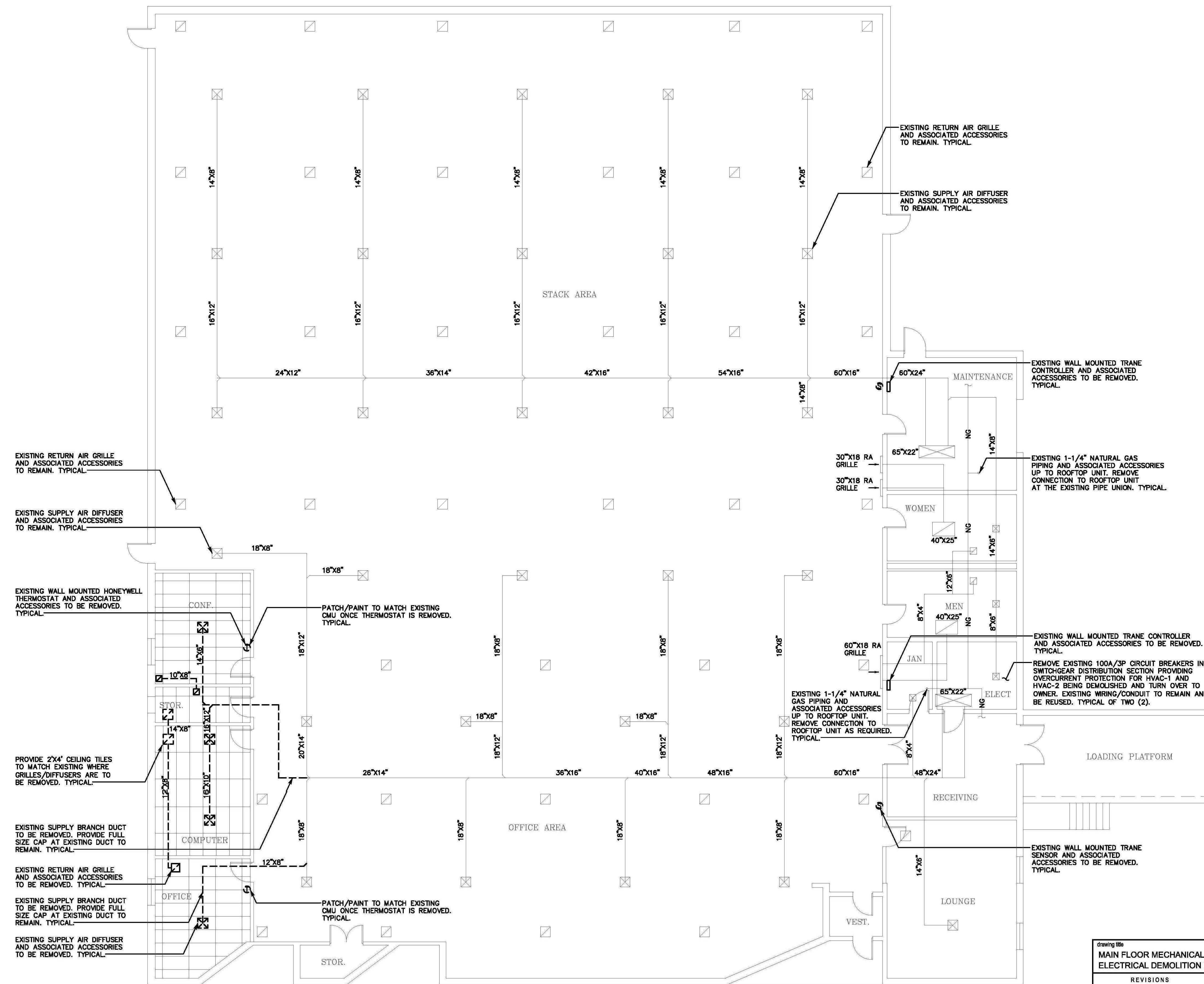
PROJECT SITE



LOCATION PLAN

APPROVALS

DEPT. OF ADMINISTRATIVE SERVICES	DATE
<i>Josh Geballe</i>	7.29.19
AGENCY	DATE
<i>[Signature]</i>	7/26/19



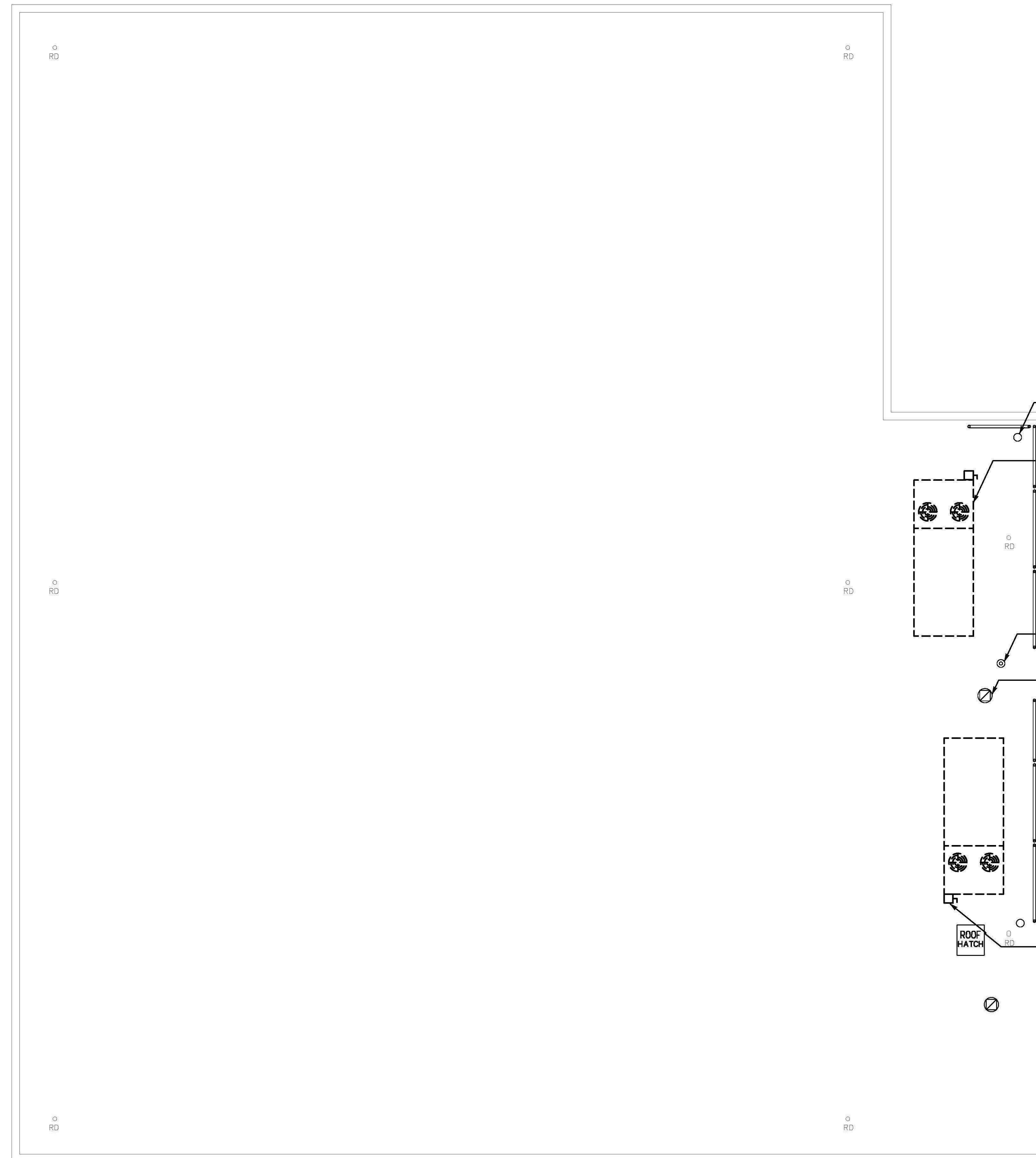
- MECHANICAL/ELECTRICAL DEMOLITION NOTES:**
1. THE CONTRACTOR(S) SHALL VISIT THE PROJECT SITE PRIOR TO BIDDING, NOTING EXISTING CONDITIONS AND EQUIPMENT. IF SAID IS NOT BEING REMOVED AS PART OF PROJECT OR IS NOTED AS EXISTING TO REMAIN AND IMPEDES PROVIDING PROPOSED EQUIPMENT AND/OR PROVIDING PROPOSED SCOPE OF WORK, EQUIPMENT SHALL BE TEMPORARILY RELOCATED AND COMPLETELY REINSTALLED AFTER PROPOSED SCOPE OF WORK IS COMPLETED. THIS SHALL BE PART OF BASE BID AND CONTRACTOR'S SHALL BID ACCORDINGLY, NO ADDITIONAL COMPENSATION WILL BE CONSIDERED FOR RELATED WORK OF COORDINATION WITH EXISTING CONDITIONS.
 2. REMOVE AND PROPERLY DISPOSE OF EQUIPMENT AND ASSOCIATED COMPONENTS/ACCESSORIES AS INDICATED ON DEMOLITION PLANS. PROPERLY DISPOSE OF ALL DEMOLITION DEBRIS AS REQUIRED BY FEDERAL, STATE AND LOCAL CODES AND ORDINANCES. TYPICAL.
 3. CONTRACTOR SHALL NOT DAMAGE ANY EXISTING EQUIPMENT, PIPING, OR ASSOCIATED ACCESSORIES WHICH ARE TO REMAIN. ANY SUCH ITEMS DAMAGED SHALL BE REPLACED AT CONTRACTOR'S EXPENSE. TYPICAL.
 4. CONTRACTOR SHALL NOT DAMAGE ANY EXISTING ELECTRICAL CONNECTIONS, WIRING AND ASSOCIATED ACCESSORIES WHICH ARE TO REMAIN. ANY SUCH ITEMS DAMAGED SHALL BE REPLACED AT CONTRACTOR'S EXPENSE. TYPICAL.
 5. ALL DEMOLITION WORK SHALL BE PERFORMED IN A SAFE AND ORDERLY MANNER WITH QUALIFIED AND LICENSED PERSONNEL IN ACCORDANCE WITH STATE AND LOCAL GOVERNING AUTHORITIES AND ALL APPLICABLE CODES AND STANDARDS. COORDINATE WORK WITH ALL PROJECT DISCIPLINES AND EXISTING CONDITIONS. TYPICAL.
 6. CONTRACTOR SHALL PROVIDE MINIMUM OF 72 HOURS NOTICE PRIOR TO ANY EQUIPMENT/SERVICE SHUT DOWN.
 7. DRAWINGS ARE DIAGRAMMATIC. CONTRACTOR SHALL FIELD VERIFY ALL EXISTING CONDITIONS INCLUDED IN AND RELATED TO THE PROJECT SCOPE OF WORK. TYPICAL.
 8. BUILDING WILL BE OCCUPIED DURING ALL PHASES OF CONSTRUCTION. CONTAIN AND CONTROL CONSTRUCTION DEBRIS SO AS NOT TO INTERFERE WITH DAILY OPERATION OF BUILDING. KEEP EGRESS PATHS FREE FROM DAILY OPERATION OF BUILDING.

DUCT CLEANING NOTE:
 CONTRACTOR SHALL CLEAN ALL EXISTING EQUIPMENT, DUCTWORK AND AIR INLET AND OUTLETS SERVING THE ENTIRE BUILDING. ALL DRAWINGS ARE DIAGRAMMATIC AND MAY NOT INDICATE ALL SIZES, DUCTS, DIFFUSERS AND GRILLES TO BE CLEANED. CONTRACTOR SHALL VISIT THE PROJECT SITE AND BID ACCORDINGLY. SEE SPECIFICATIONS FOR FURTHER REQUIREMENTS. TYPICAL.

- EXISTING RETURN AIR GRILLE AND ASSOCIATED ACCESSORIES TO REMAIN. TYPICAL.
- EXISTING SUPPLY AIR DIFFUSER AND ASSOCIATED ACCESSORIES TO REMAIN. TYPICAL.
- EXISTING WALL MOUNTED HONEYWELL THERMOSTAT AND ASSOCIATED ACCESSORIES TO BE REMOVED. TYPICAL.
- PATCH/PAINT TO MATCH EXISTING CMU ONCE THERMOSTAT IS REMOVED. TYPICAL.
- PROVIDE 2'x4' CEILING TILES TO MATCH EXISTING WHERE GRILLES/DIFFUSERS ARE TO BE REMOVED. TYPICAL.
- EXISTING SUPPLY BRANCH DUCT TO BE REMOVED. PROVIDE FULL SIZE CAP AT EXISTING DUCT TO REMAIN. TYPICAL.
- EXISTING RETURN AIR GRILLE AND ASSOCIATED ACCESSORIES TO BE REMOVED. TYPICAL.
- EXISTING SUPPLY BRANCH DUCT TO BE REMOVED. PROVIDE FULL SIZE CAP AT EXISTING DUCT TO REMAIN. TYPICAL.
- EXISTING SUPPLY AIR DIFFUSER AND ASSOCIATED ACCESSORIES TO BE REMOVED. TYPICAL.
- PATCH/PAINT TO MATCH EXISTING CMU ONCE THERMOSTAT IS REMOVED. TYPICAL.

MAIN FLOOR MECHANICAL/ELECTRICAL DEMOLITION PLAN
 SCALE: 1/8"=1'-0"

drawing title		STATE OF CONNECTICUT	
MAIN FLOOR MECHANICAL/ELECTRICAL DEMOLITION PLAN		DEPARTMENT OF ADMINISTRATIVE SERVICES DIVISION OF CONSTRUCTION SERVICES	
REVISIONS			
mark	date	description	
drawing prepared by		date	
SALAMONE & ASSOCIATES, P.C.		07/22/2019	
116 NORTH PLAINS INDUSTRIAL ROAD		scale	
WALLINGFORD, CONNECTICUT		AS NOTED	
project		drawn by	
HVAC REPLACEMENT		ST	
LIBRARY FOR THE BLIND AND		approved by	
PHYSICALLY HANDICAPPED		JAS	
ROCKY HILL, CT		drawing no.	
CAD no.		project no.	
LFTB/DME-1		BI-SS-117	
		DME-1	



EXISTING UNIT HEATER EXHAUST.
TYPICAL.

REMOVE EXISTING NOMINAL 20 TON
COMMERCIAL ROOF TOP UNIT. CAREFULLY
REMOVE EXISTING ELECTRICAL DISCONNECTS
AND DISCONNECT TO EXISTING NATURAL
GAS PIPING AS REQUIRED. DO NOT DAMAGE
EXISTING ROOF CURBS.

EXISTING ROOF RAIL SYSTEM.
TYPICAL.

EXISTING PLUMBING VENT.
TYPICAL.

EXISTING EXHAUST FAN.
TYPICAL.

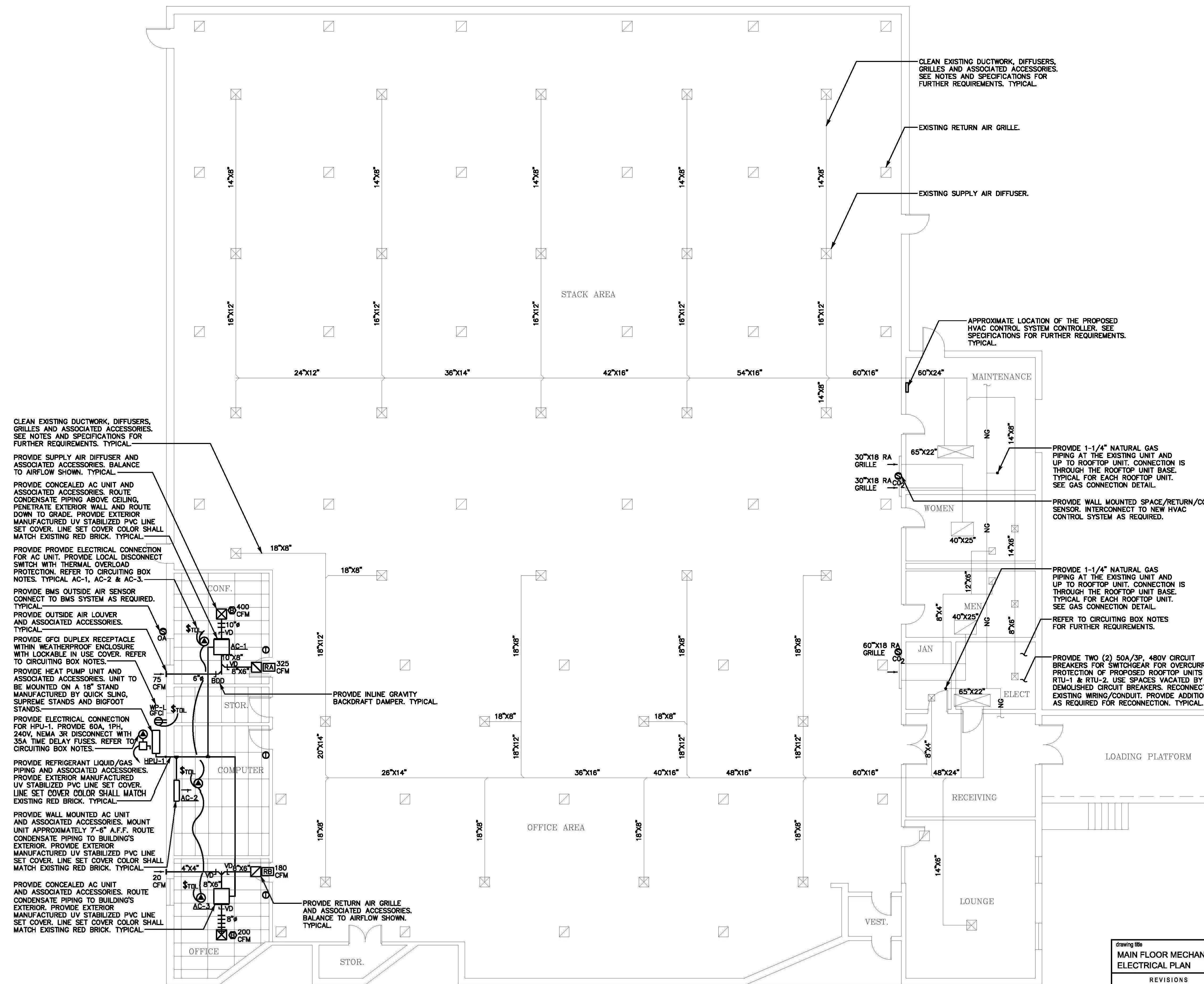
REMOVE EXISTING ELECTRICAL CONNECTION AND
ASSOCIATED DISCONNECT TO ROOFTOP UNIT
BEING DEMOLISHED. EXISTING FEEDER WIRING/
CONDUIT TO REMAIN AND BE REUSED. TYPICAL.

- MECHANICAL/ELECTRICAL DEMOLITION NOTES:**
1. THE CONTRACTOR(S) SHALL VISIT THE PROJECT SITE PRIOR TO BIDDING, NOTING EXISTING CONDITIONS AND EQUIPMENT. IF SAID IS NOT BEING REMOVED AS PART OF PROJECT OR IS NOTED AS EXISTING TO REMAIN AND IMPEDES PROPOSED EQUIPMENT AND/OR PROVIDING PROPOSED SCOPE OF WORK, EQUIPMENT SHALL BE TEMPORARILY RELOCATED AND COMPLETELY REINSTALLED AFTER PROPOSED SCOPE OF WORK IS COMPLETED. THIS SHALL BE PART OF BASE BID AND CONTRACTOR'S SHALL BID ACCORDINGLY. NO ADDITIONAL COMPENSATION WILL BE CONSIDERED FOR RELATED WORK OF COORDINATION WITH EXISTING CONDITIONS.
 2. REMOVE AND PROPERLY DISPOSE OF EQUIPMENT AND ASSOCIATED COMPONENTS/ACCESSORIES AS INDICATED ON DEMOLITION PLANS. PROPERLY DISPOSE OF ALL DEMOLITION DEBRIS AS REQUIRED BY FEDERAL, STATE AND LOCAL CODES AND ORDINANCES. TYPICAL.
 3. CONTRACTOR SHALL NOT DAMAGE ANY EXISTING EQUIPMENT, PIPING, OR ASSOCIATED ACCESSORIES WHICH ARE TO REMAIN. ANY SUCH ITEMS DAMAGED SHALL BE REPLACED AT CONTRACTOR'S EXPENSE. TYPICAL.
 4. CONTRACTOR SHALL NOT DAMAGE ANY EXISTING ELECTRICAL CONNECTIONS, WIRING AND ASSOCIATED ACCESSORIES WHICH ARE TO REMAIN. ANY SUCH ITEMS DAMAGED SHALL BE REPLACED AT CONTRACTOR'S EXPENSE. TYPICAL.
 5. ALL DEMOLITION WORK SHALL BE PERFORMED IN A SAFE AND ORDERLY MANNER WITH QUALIFIED AND LICENSED PERSONNEL IN ACCORDANCE WITH STATE AND LOCAL GOVERNING AUTHORITIES AND ALL APPLICABLE CODES AND STANDARDS. COORDINATE WORK WITH ALL PROJECT DISCIPLINES AND EXISTING CONDITIONS. TYPICAL.
 6. CONTRACTOR SHALL PROVIDE MINIMUM OF 72 HOURS NOTICE PRIOR TO ANY EQUIPMENT/SERVICE SHUT DOWN.
 7. DRAWINGS ARE DIAGRAMMATIC. CONTRACTOR SHALL FIELD VERIFY ALL EXISTING CONDITIONS INCLUDED IN AND RELATED TO THE PROJECT SCOPE OF WORK. TYPICAL.
 8. BUILDING WILL BE OCCUPIED DURING ALL PHASES OF CONSTRUCTION. CONTAIN AND CONTROL CONSTRUCTION DEBRIS SO AS NOT TO INTERFERE WITH DAILY OPERATION OF BUILDING. KEEP EGRESS PATHS FREE FROM DAILY OPERATION OF BUILDING.
 9. COORDINATE ALL ROOF WORK WITH THE ROOF MANUFACTURER'S WARRANTY PROVIDED BY FIRESTONE #700349395 (10/11/18).

ROOF MECHANICAL/ELECTRICAL DEMOLITION PLAN

SCALE: 1/8"=1'-0"

drawing title		STATE OF CONNECTICUT	
ROOF MECHANICAL/ELECTRICAL DEMOLITION PLAN		DEPARTMENT OF ADMINISTRATIVE SERVICES DIVISION OF CONSTRUCTION SERVICES	
REVISIONS			
mark	date	description	
drawing prepared by		date	
SALAMONE & ASSOCIATES, P.C.		07/22/2019	
116 NORTH PLAINS INDUSTRIAL ROAD		scale	
WALLINGFORD, CONNECTICUT		AS NOTED	
project		drawn by	
HVAC REPLACEMENT		ST	
LIBRARY FOR THE BLIND AND		approved by	
PHYSICALLY HANDICAPPED		JAS	
ROCKY HILL, CT		drawing no.	
CAD no.		project no.	
LFTB/DME-2		BI-SS-117	
			DME-2



- CIRCUITING NOTES:**
1. PROVIDE 40A/2P, 240V, AND 20A/1P, 240V CIRCUIT BREAKERS FOR PANEL B LOCATED IN ELECTRICAL ROOM FOR OVERCURRENT PROTECTION OF 'HP-1' CIRCUIT AND PROPOSED GFCI RECEPTACLE ON ROOF RESPECTIVELY. USE AVAILABLE SPACES IN PANEL B.
 2. PROVIDE 15A/2P, 240V AND 20A/1P, 240V CIRCUIT BREAKERS FOR PANEL CP LOCATED IN COMPUTER ROOM FOR OVERCURRENT PROTECTION OF PROPOSED 'AC-1, AC-2, AC-3' CIRCUIT AND GFCI RECEPTACLE NEAR 'HP-1' RESPECTIVELY. USE AVAILABLE SPACES IN PANEL CP.
 3. PROVIDE 3/4", 2-#8 AWG + #10 GND FOR CONNECTION FROM 'HP-1' TO PROPOSED 40A/2P CIRCUIT BREAKER IN PANEL B.
 4. PROVIDE 3/4", 3-#12 AWG FOR CONNECTION FROM 'AC-1, AC-2, AC-3' TO PROPOSED 15A/2P CIRCUIT BREAKER IN PANEL CP.
 5. PROVIDE 3/4", 3-#12 AWG FOR CONNECTION OF PROPOSED GFCI RECEPTACLE ON ROOF TO PROPOSED 20A/1P CIRCUIT BREAKER IN PANEL B.
 6. PROVIDE 3/4", 3-#12 AWG FOR CONNECTION OF PROPOSED GFCI RECEPTACLE NEAR 'HP-1' TO PROPOSED 20A/1P CIRCUIT BREAKER IN PANEL CP.

MECHANICAL DUCTWORK NOTES:
RTLS:
 ALL NEW SUPPLY/RETURN DUCTWORK WITHIN THE CEILING SPACE SHALL BE EXTERNALLY INSULATED. SEE SPECIFICATIONS FURTHER REQUIREMENTS. TYPICAL.

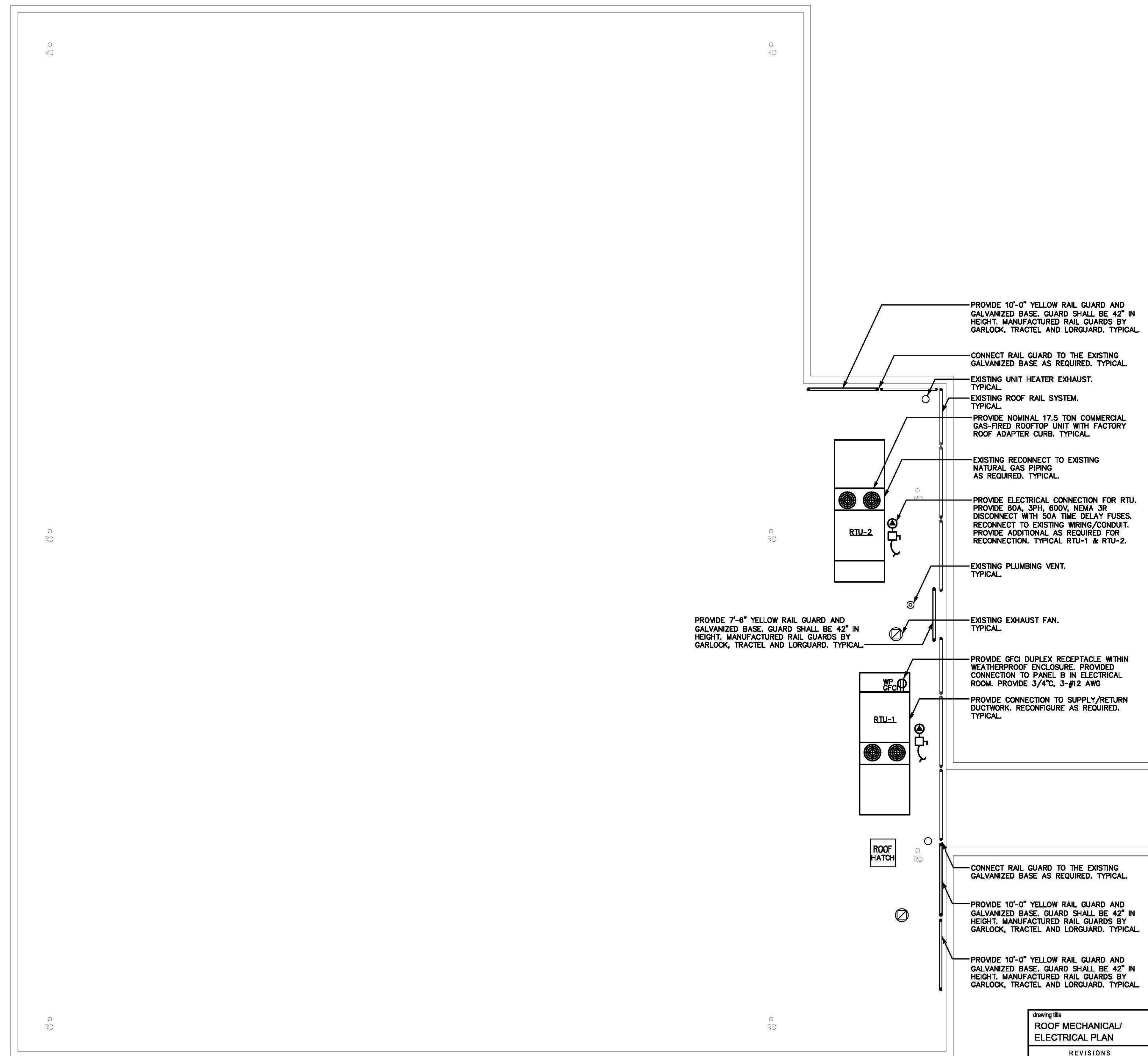
- MECHANICAL NOTES:**
1. THE CONTRACTOR SHALL VISIT THE PROJECT SITE, PRIOR TO BIDDING, AND BECOME INFORMED AS TO THE NATURE AND SCOPE OF WORK REQUIRED, NOTING AND ACCOUNTING FOR EXISTING CONDITIONS. TYPICAL.
 2. COORDINATE ALL WORK WITH EXISTING/PROPOSED CONDITIONS. TYPICAL.
 3. THE CONTRACTOR SHALL BE RESPONSIBLE FOR ALL WORK INCLUDING TOOLS, MATERIAL, MANPOWER, ETC. REQUIRED FOR COMPLETE AND PROPER INSTALLATION OF PROPOSED MATERIALS, FIXTURES AND/OR EQUIPMENT.
 4. DRAWINGS ARE DIAGRAMMATIC. CONTRACTOR SHALL FIELD VERIFY ALL LOCATIONS, QUANTITIES AND DIMENSIONS OF EXISTING MATERIALS, PIPING, CONDUIT, FIXTURES AND/OR EQUIPMENT WITHIN AND AFFECTING PROJECT SCOPE OF WORK.
 5. ALL WORK SHALL BE PERFORMED IN A SAFE AND ORDERLY MANNER WITH QUALIFIED AND LICENSED PERSONNEL IN ACCORDANCE WITH STATE AND LOCAL GOVERNING AUTHORITIES AND ALL APPLICABLE CODES AND STANDARDS. TYPICAL.
 6. ALL SERVICE DISRUPTIONS MUST BE SCHEDULED A MINIMUM OF 72 HOURS IN ADVANCE WITH THE OWNER'S REPRESENTATIVE.
 7. PROVIDE ALL REQUIRED PENETRATIONS. COORDINATE WITH EXISTING STRUCTURAL ELEMENTS. FIRE STOP ALL PENETRATIONS, INCLUDING BUT NOT LIMITED TO: OUTSIDE AIR DUCTWORK, REFRIGERATION/CONDENSATE PIPING AND CONDUIT FOR HEAT PUMP. TYPICAL.

DUCT CLEANING NOTE:
 CONTRACTOR SHALL CLEAN ALL EXISTING EQUIPMENT, DUCTWORK AND AIR INLET AND OUTLETS SERVING THE ENTIRE BUILDING. ALL DRAWINGS ARE DIAGRAMMATIC AND MAY NOT INDICATE ALL SIZES, DUCTS, DIFFUSERS AND GRILLES TO BE CLEANED. CONTRACTOR SHALL VISIT THE PROJECT SITE AND BID ACCORDINGLY. SEE SPECIFICATIONS FOR FURTHER REQUIREMENTS. TYPICAL.

- CLEAN EXISTING DUCTWORK, DIFFUSERS, GRILLES AND ASSOCIATED ACCESSORIES. SEE NOTES AND SPECIFICATIONS FOR FURTHER REQUIREMENTS. TYPICAL.
- PROVIDE SUPPLY AIR DIFFUSER AND ASSOCIATED ACCESSORIES. BALANCE TO AIRFLOW SHOWN. TYPICAL.
- PROVIDE CONCEALED AC UNIT AND ASSOCIATED ACCESSORIES. ROUTE CONDENSATE PIPING ABOVE CEILING. PENETRATE EXTERIOR WALL AND ROUTE DOWN TO GRADE. PROVIDE EXTERIOR MANUFACTURED UV STABILIZED PVC LINE SET COVER. LINE SET COVER COLOR SHALL MATCH EXISTING RED BRICK. TYPICAL.
- PROVIDE ELECTRICAL CONNECTION FOR AC UNIT. PROVIDE LOCAL DISCONNECT SWITCH WITH THERMAL OVERLOAD PROTECTION. REFER TO CIRCUITING BOX NOTES. TYPICAL. AC-1, AC-2 & AC-3.
- PROVIDE BMS OUTSIDE AIR SENSOR CONNECT TO BMS SYSTEM AS REQUIRED. TYPICAL.
- PROVIDE OUTSIDE AIR LOUVER AND ASSOCIATED ACCESSORIES.
- PROVIDE GFCI DUPLEX RECEPTACLE WITH WEATHERPROOF ENCLOSURE WITH LOCKABLE IN USE COVER. REFER TO CIRCUITING BOX NOTES.
- PROVIDE HEAT PUMP UNIT AND ASSOCIATED ACCESSORIES. UNIT TO BE MOUNTED ON A 18" STAND MANUFACTURED BY QUICK SLING, SUPREME STANDS AND BIGFOOT STANDS.
- PROVIDE ELECTRICAL CONNECTION FOR HPU-1. PROVIDE 60A, 1PH, 240V, NEMA 3R DISCONNECT WITH 35A TIME DELAY FUSES. REFER TO CIRCUITING BOX NOTES.
- PROVIDE REFRIGERANT LIQUID/GAS PIPING AND ASSOCIATED ACCESSORIES. PROVIDE EXTERIOR MANUFACTURED UV STABILIZED PVC LINE SET COVER. LINE SET COVER COLOR SHALL MATCH EXISTING RED BRICK. TYPICAL.
- PROVIDE WALL MOUNTED AC UNIT AND ASSOCIATED ACCESSORIES. MOUNT UNIT APPROXIMATELY 7'-5" A.F.F. ROUTE CONDENSATE PIPING TO BUILDING'S EXTERIOR. PROVIDE EXTERIOR MANUFACTURED UV STABILIZED PVC LINE SET COVER. LINE SET COVER COLOR SHALL MATCH EXISTING RED BRICK. TYPICAL.
- PROVIDE CONCEALED AC UNIT AND ASSOCIATED ACCESSORIES. ROUTE CONDENSATE PIPING TO BUILDING'S EXTERIOR. PROVIDE EXTERIOR MANUFACTURED UV STABILIZED PVC LINE SET COVER. LINE SET COVER COLOR SHALL MATCH EXISTING RED BRICK. TYPICAL.
- PROVIDE RETURN AIR GRILLE AND ASSOCIATED ACCESSORIES. BALANCE TO AIRFLOW SHOWN. TYPICAL.
- PROVIDE INLINE GRAVITY BACKDRAFT DAMPER. TYPICAL.

MAIN FLOOR MECHANICAL/ELECTRICAL PLAN
 SCALE: 1/8"=1'-0"

drawing title		STATE OF CONNECTICUT DEPARTMENT OF ADMINISTRATIVE SERVICES DIVISION OF CONSTRUCTION SERVICES	
MAIN FLOOR MECHANICAL/ ELECTRICAL PLAN			
REVISIONS			
mark	date	description	
drawing prepared by		SALAMONE & ASSOCIATES, P.C.	
116 NORTH PLAINS INDUSTRIAL ROAD WALLINGFORD, CONNECTICUT		07/22/2019	
project		HVAC REPLACEMENT LIBRARY FOR THE BLIND AND PHYSICALLY HANDICAPPED ROCKY HILL, CT	
CAD no.		project no.	
LFTB/ME-1		BI-SS-117	
		drawing no.	
		ME-1	



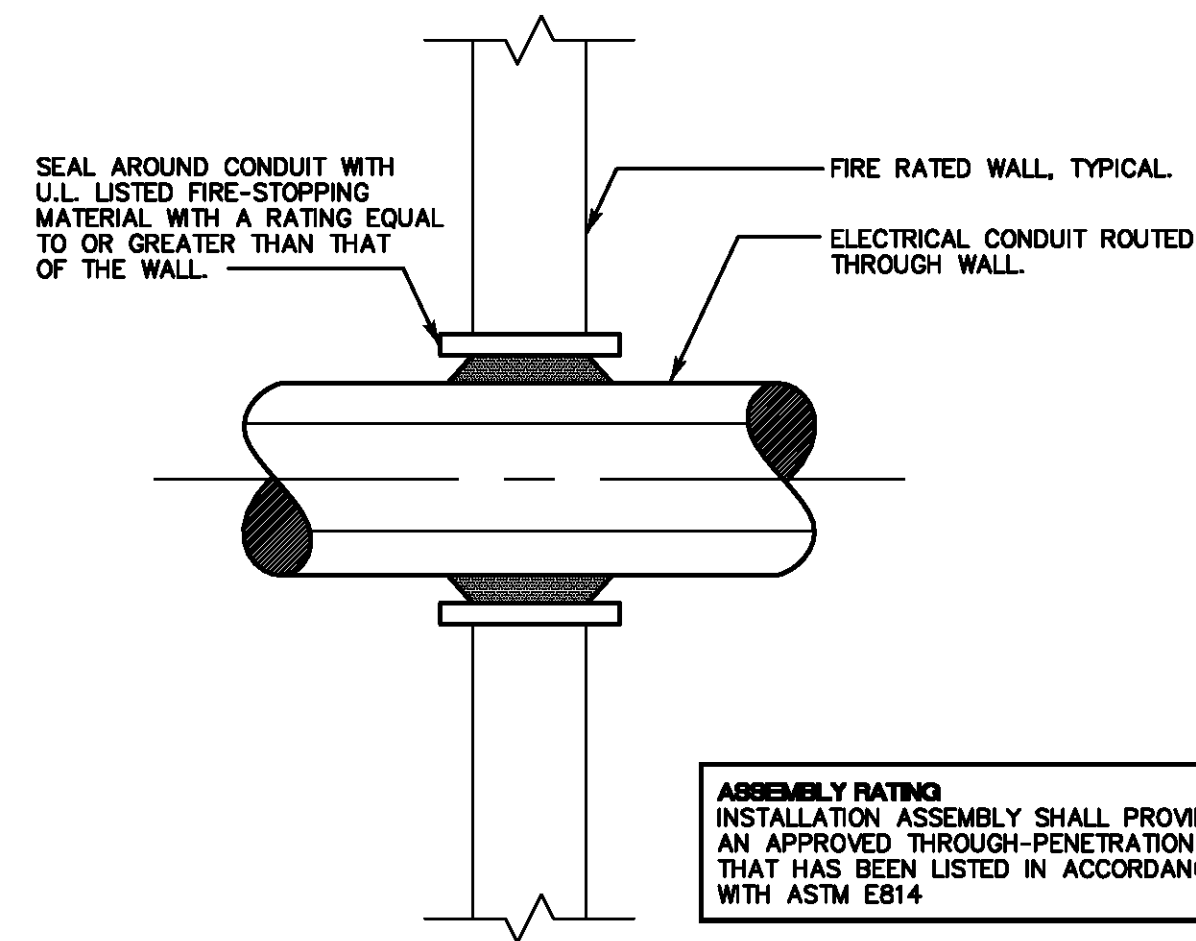
MECHANICAL DUCTWORK NOTES:
 RTU'S:
 ALL NEW SUPPLY/RETURN DUCTWORK WITHIN THE CEILING SPACE SHALL BE EXTERNALLY INSULATED. SEE SPECIFICATIONS FURTHER REQUIREMENTS. TYPICAL.

- MECHANICAL NOTES:**
1. THE CONTRACTOR SHALL VISIT THE PROJECT SITE, PRIOR TO BIDDING, AND BECOME INFORMED AS TO THE NATURE AND SCOPE OF WORK REQUIRED, NOTING AND ACCOUNTING FOR EXISTING CONDITIONS. TYPICAL.
 2. COORDINATE ALL WORK WITH EXISTING/PROPOSED CONDITIONS. TYPICAL.
 3. THE CONTRACTOR SHALL BE RESPONSIBLE FOR ALL WORK INCLUDING TOOLS, MATERIAL, MANPOWER, ETC. REQUIRED FOR COMPLETE AND PROPER INSTALLATION OF PROPOSED MATERIALS, FIXTURES AND/OR EQUIPMENT.
 4. DRAWINGS ARE DIAGRAMMATIC. CONTRACTOR SHALL FIELD VERIFY ALL LOCATIONS, QUANTITIES AND DIMENSIONS OF EXISTING MATERIALS, PIPING, CONDUIT, FIXTURES AND/OR EQUIPMENT WITHIN AND AFFECTING PROJECT SCOPE OF WORK.
 5. ALL WORK SHALL BE PERFORMED IN A SAFE AND ORDERLY MANNER WITH QUALIFIED AND LICENSED PERSONNEL IN ACCORDANCE WITH STATE AND LOCAL GOVERNING AUTHORITIES AND ALL APPLICABLE CODES AND STANDARDS. TYPICAL.
 6. ALL SERVICE DISRUPTIONS MUST BE SCHEDULED A MINIMUM OF 72 HOURS IN ADVANCE WITH THE OWNER'S REPRESENTATIVE.
 7. PROVIDE ALL REQUIRED PENETRATIONS. COORDINATE WITH EXISTING STRUCTURAL ELEMENTS. FIRE STOP ALL PENETRATIONS. TYPICAL.

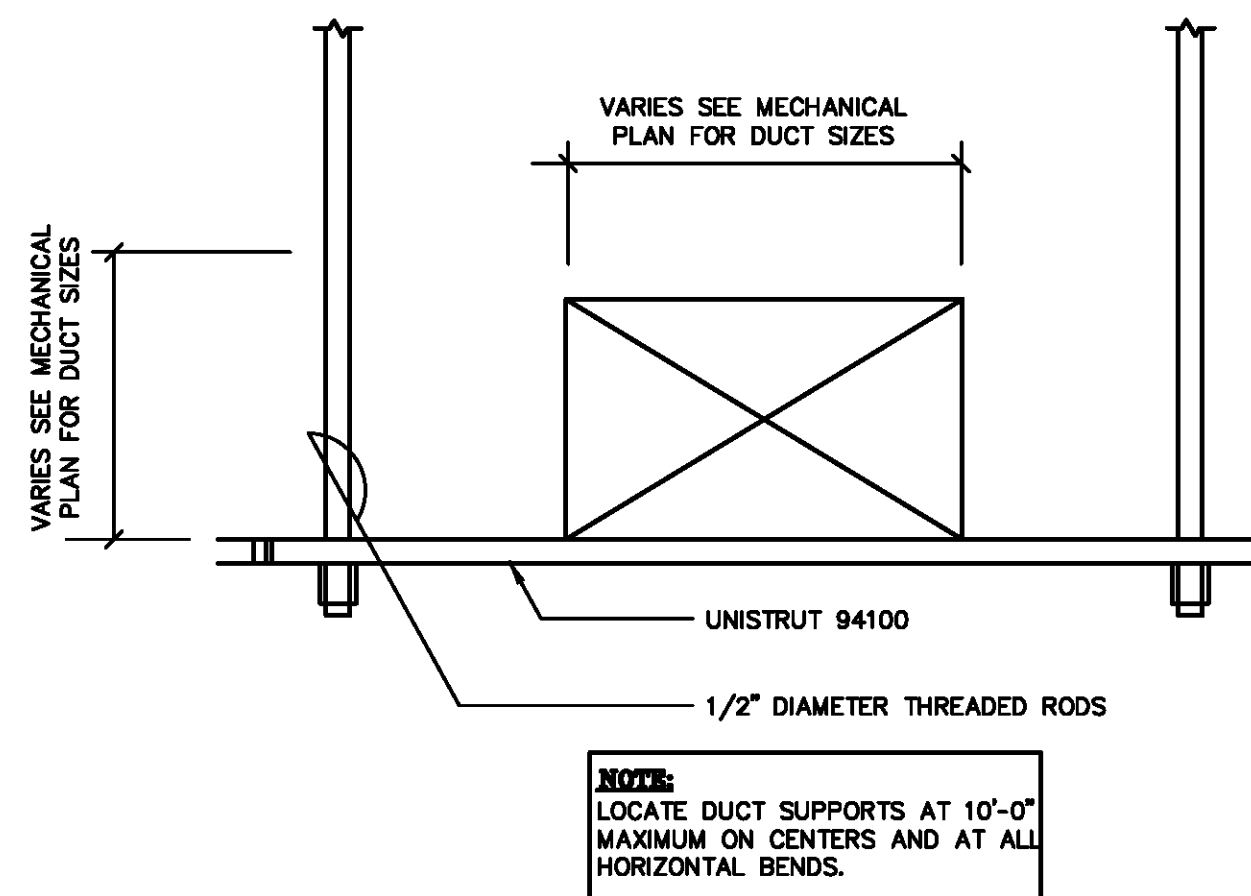
ROOF MECHANICAL/ELECTRICAL PLAN

SCALE: 1/8"=1'-0"

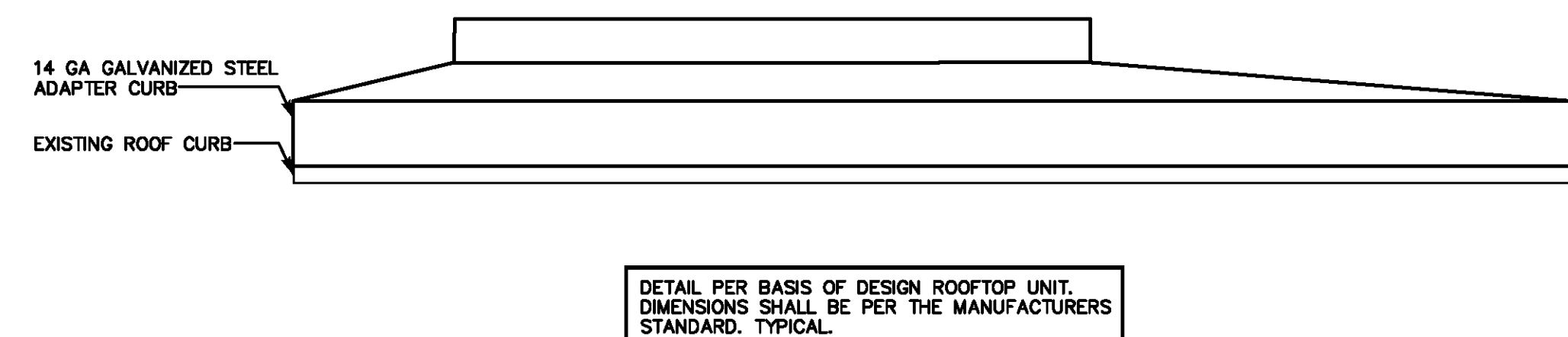
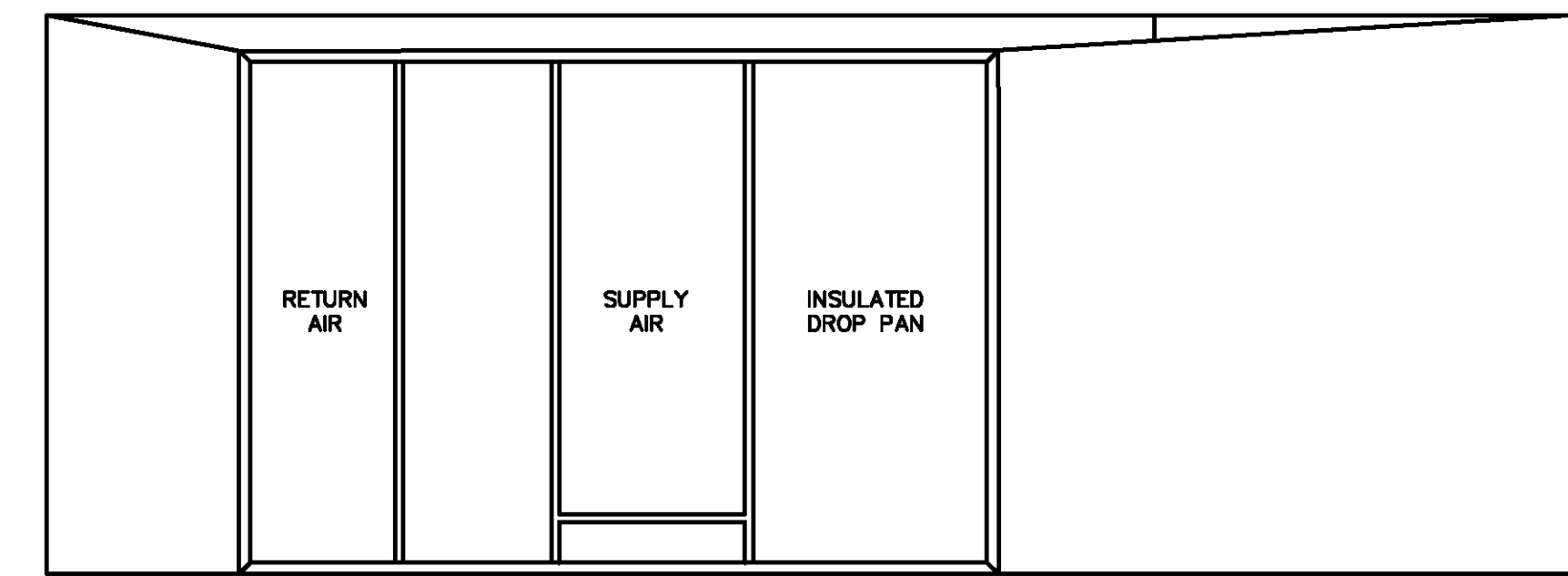
drawing title		STATE OF CONNECTICUT	
ROOF MECHANICAL/ ELECTRICAL PLAN		DEPARTMENT OF ADMINISTRATIVE SERVICES DIVISION OF CONSTRUCTION SERVICES	
REVISIONS			
mark	date	description	
drawing prepared by		SALAMONE & ASSOCIATES, P.C.	
116 NORTH PLAINS INDUSTRIAL ROAD		WALLINGFORD, CONNECTICUT	
project		HVAC REPLACEMENT LIBRARY FOR THE BLIND AND PHYSICALLY HANDICAPPED ROCKY HILL, CT	
CAD no.		project no.	
LFTB/ME-2		BI-SS-117	
		date	
		07/22/2019	
		scale	
		AS NOTED	
		drawn by	
		ST	
		approved by	
		JAS	
		drawing no.	
		ME-2	



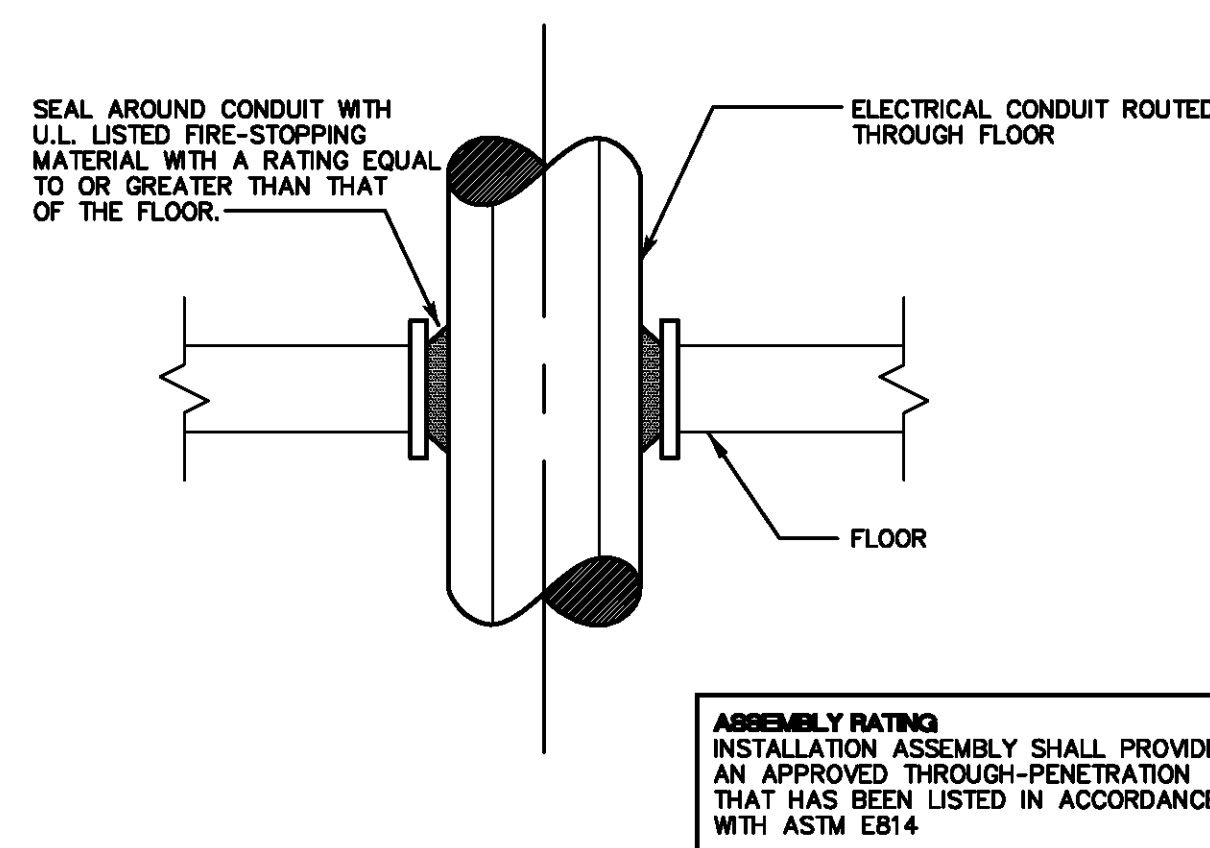
**TYPICAL PIPE/CONDUIT WALL PENETRATION
DETAIL (UL XHEZ C-AJ-1008)**
SCALE: N.T.S.



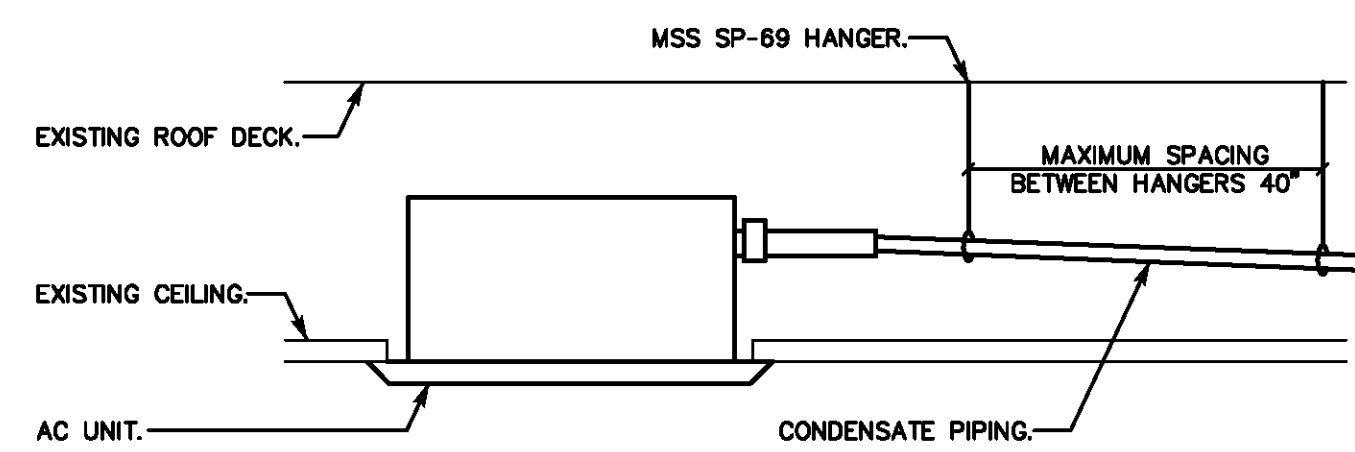
TYPICAL DUCTWORK SUPPORT DETAIL
SCALE: N.T.S.



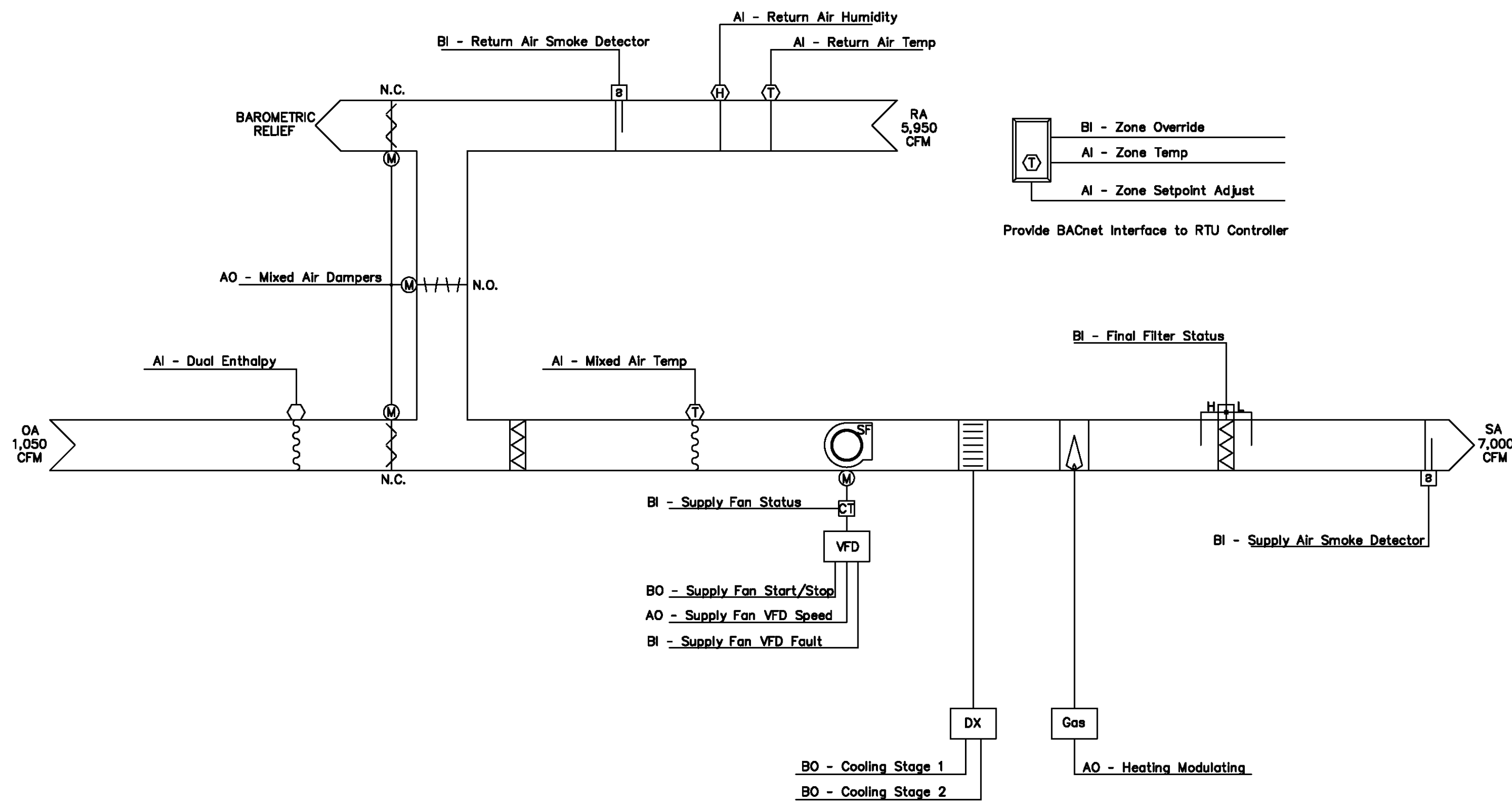
PACKAGED ROOFTOP ADAPTER CURB DETAIL
SCALE: N.T.S.



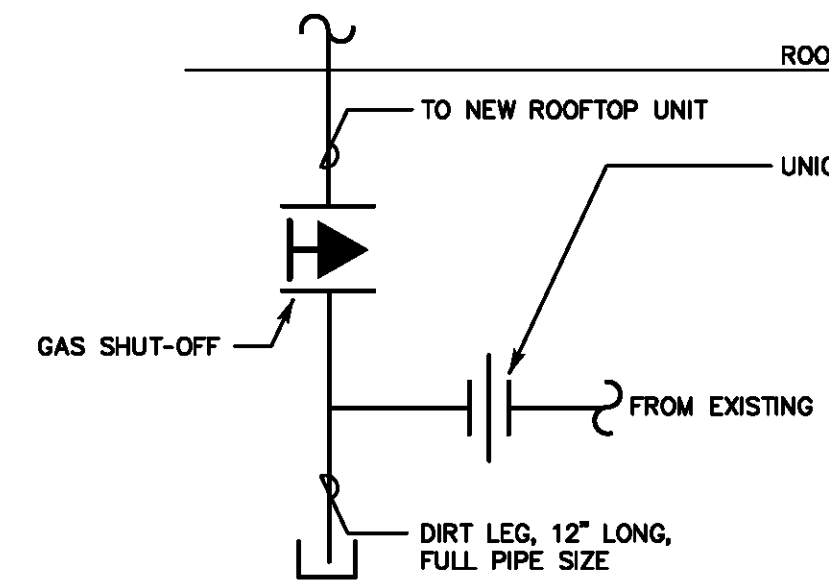
**TYPICAL CONDUIT FLOOR PENETRATION
DETAIL (UL XHEZ C-AJ-1008)**
SCALE: N.T.S.



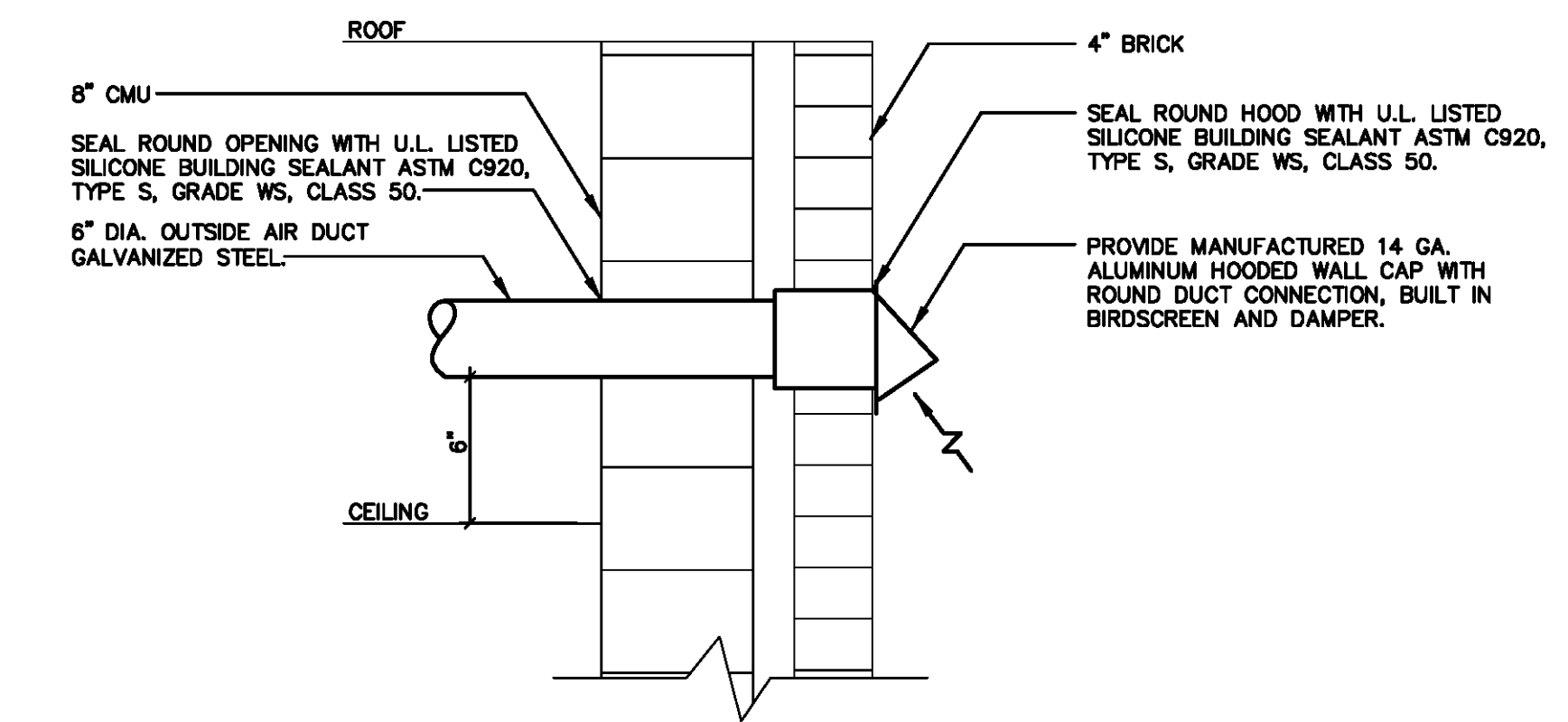
CONDENSATE PIPING DETAIL
SCALE: N.T.S.



TYPICAL PACKAGED ROOFTOP CONTROL/FLOW DIAGRAM
SCALE: N.T.S.



**TYPICAL CONNECTION TO
GAS FIRED EQUIPMENT**
SCALE: N.T.S.



OUTSIDE AIR VENT DETAIL
SCALE: N.T.S.

Drawing title MECHANICAL/ELECTRICAL DETAILS			STATE OF CONNECTICUT DEPARTMENT OF ADMINISTRATIVE SERVICES DIVISION OF CONSTRUCTION SERVICES		
REVISIONS			drawing prepared by SALAMONE & ASSOCIATES, P.C. 116 NORTH PLAINS INDUSTRIAL ROAD WALLINGFORD, CONNECTICUT		
mark	date	description	Date 07/22/2019 Scale AS NOTED		
			project HVAC REPLACEMENT LIBRARY FOR THE BLIND AND PHYSICALLY HANDICAPPED ROCKY HILL, CT		
			drawing no. ME-3		
CAD no. LFTB/ME-3		project no. BI-SS-117			

