

C-WING MAIN FLOOR DOOR SCHEDULE

DOOR NUMBER	SHEET NUMBER	DOOR				FRAME				REMARKS												
		SIZE (EACH LEAF)				DETAILS-SEE DWG. A-905																
REMARKS																						
C100	A-103.3	DOUBLE LEAF DOOR	2'-0" x 7'-0" x 1-3/4"	2'-6" x 7'-0" x 1-3/4"	3'-0" x 7'-0" x 1-3/4"	3'-6" x 7'-0" x 1-3/4"	3'-8" x 7'-0" x 1-3/4"	3'-0" x 8'-0" x 1-3/4"	6'-0" x 8'-6" MLT. ROLL-UP	10'-0" x 8'-6" MLT. ROLL-UP	ROLLING GRILLE CURTAIN	3'-0" x 7'-0" (MESH)	F	A-WD	9-HM	P	H17	J18, J20, J21	-	44	-	9

C-WING MAIN FLOOR DOOR SCHEDULE

DOOR NUMBER	SHEET NUMBER	DOOR				FRAME				REMARKS												
		SIZE (EACH LEAF)				DETAILS-SEE DWG. A-905																
C116a	A-103.3	DOUBLE LEAF DOOR	2'-0" x 7'-0" x 1-3/4"	2'-6" x 7'-0" x 1-3/4"	3'-0" x 7'-0" x 1-3/4"	3'-6" x 7'-0" x 1-3/4"	3'-8" x 7'-0" x 1-3/4"	3'-0" x 8'-0" x 1-3/4"	6'-0" x 8'-6" MLT. ROLL-UP	10'-0" x 8'-6" MLT. ROLL-UP	ROLLING GRILLE CURTAIN	3'-0" x 7'-0" (MESH)	F	A-WD	18-HM	P	H17	J18, J20, J21	-	44	-	9

C-WING MAIN FLOOR DOOR SCHEDULE

DOOR NUMBER	SHEET NUMBER	DOOR				FRAME				REMARKS												
		SIZE (EACH LEAF)				DETAILS-SEE DWG. A-905																
C125f	A-103.2	DOUBLE LEAF DOOR	2'-0" x 7'-0" x 1-3/4"	2'-6" x 7'-0" x 1-3/4"	3'-0" x 7'-0" x 1-3/4"	3'-6" x 7'-0" x 1-3/4"	3'-8" x 7'-0" x 1-3/4"	3'-0" x 8'-0" x 1-3/4"	6'-0" x 8'-6" MLT. ROLL-UP	10'-0" x 8'-6" MLT. ROLL-UP	ROLLING GRILLE CURTAIN	3'-0" x 7'-0" (MESH)	S	C-WD	1-HM	P	H3	J16	-	23	45	11

C-WING MAIN FLOOR DOOR SCHEDULE

DOOR NUMBER	SHEET NUMBER	DOOR				FRAME				REMARKS												
		SIZE (EACH LEAF)				DETAILS-SEE DWG. A-905																
C153	A-103.1	DOUBLE LEAF DOOR	2'-0" x 7'-0" x 1-3/4"	2'-6" x 7'-0" x 1-3/4"	3'-0" x 7'-0" x 1-3/4"	3'-6" x 7'-0" x 1-3/4"	3'-8" x 7'-0" x 1-3/4"	3'-0" x 8'-0" x 1-3/4"	6'-0" x 8'-6" MLT. ROLL-UP	10'-0" x 8'-6" MLT. ROLL-UP	ROLLING GRILLE CURTAIN	3'-0" x 7'-0" (MESH)	S	A-WD	1-HM	P	H19	J26	T2	39	45	8

REMARKS:

- DOOR TO HAVE AUTOMATIC DOOR BOTTOM AND SOUND GASKET AT HEAD AND JAMBS
- PROVIDE 180 DEGREE CLOSER.
- PROVIDE 'LABELLED LITE BEARING' AT ALL FIRE RATED DOOR VISION PANELS.
- ALL GLAZED HOLLOW METAL FRAMES SHALL HAVE STOPS INSTALLED ON THE SECURE SIDE.
- ALUMINUM DOOR AND FRAME TO BE STOREFRONT SYSTEM.
- ALUMINUM DOOR AND FRAME TO BE PROVIDED BY THE CURTAINWALL MANUFACTURER.
- ALL REMOVABLE MULLIONS SHALL BE KEY OPERATED.
- SEE DOOR SCHEDULES FOR DOORS THAT REQUIRE TO BE UNDERCUT.
- SEE SPEC SECTION 08 34 73 FOR "ACOUSTICALLY RATED DOORS", FURNISH & INSTALL GASKETS & ACOUSTICALLY RATED DOOR & FRAME
- SEE SPEC. SECTION 08 71 12 FOR ACOUSTICALLY GASKETED DOOR SEALS TYPE G1
- SEE SPEC. SECTION 08 71 12 FOR ACOUSTICALLY GASKETED DOOR SEALS TYPE G2
- NOT USED
- EXISTING DOOR AND FRAME TO REMAIN.
- DOOR PROVIDES ACCESS TO EXISTING MECHANICAL SPACE ON EXISTING ROOF.
- SEE FLOOR PLANS AND ALUMINUM OR HOLLOW METAL INTERIOR FRAME ELEVATIONS FOR FRAME TYPES.
- NEW ROLLING GRILLE DOOR TO FILL NEW MASONRY OPENING OF 3'-0" x 7'-4" V-L.F.
- GATE TO BE 3'-0"x3'-0"x 3/4" AND INSTALL WITHIN ADJACENT COUNTER/CASEWORK SYSTEM. SEE INTERIOR ELEVATIONS. FRAME TO BE HOLLOW METAL AND CAPPED AT THE TOP AND SECURELY ANCHORED TO THE CASE WORK SYSTEM JAMBS.
- REFER TO SECTION 0814 FOR VAULT DOOR SPECIFICATION. FULL DOOR AND HARDWARE FURNISHED AND INSTALLED BY VAULT DOOR MANUFACTURER/SUPPLIER. FINAL CORE TO MATCH KEYING SYSTEM OF ALL THE NEW DOORS.
- VERIFY EXISTING MASONRY OPENING IN THE FIELD.
- WIRE MESH PARTITION SYSTEM DOOR
- EXISTING FRAME TO REMAIN.
- VERIFY EXISTING DOOR OPENING SIZE PRIOR TO FABRICATING THIS NEW WIRE MESH PARTITION SYSTEM DOOR.
- VERIFY DOOR SIZE IN THE FIELD.
- GLASS LITE TO BE 1" INSULATED GLASS.
- DOORS MUST BE DOUBLE-HINGED TO A MIN. OF 90° ON EITHER SIDE OF THE CLOSED POSITION
- EACH LEAF SHALL HAVE ONE 8" WIDE X 16" HIGH MINIMUM METAL LOUVER SYSTEM AT THE TOP AND BOTTOM PANELS TO FACILITATE AIR FLOW.
- LENGTH OF WALL STOP MUST PREVENT DOOR FROM HITTING GRAB BAR MOUNTED ON THE WALL.
- DOORS MUST BE EQUIPPED W/ TACTILE WARNINGS.
- DOOR FRAME IS PART OF CURTAIN WALL SYSTEM SEE SHEET A-920.
- SAND, PREP, AND RE-PAINT OR RE-STAIN EXISTING HOLLOW METAL OR WOOD DOOR AND HOLLOW METAL FRAME.
- DOOR SHALL BE 6" SHORTER THAN NORMAL TO ACCOMMODATE CONTAINMENT CURB.
- ROLLING DOOR SHALL BE 7/4" W X 10'-0" HIGH
- PROVIDE HARDWARE FOR SINGLE DOOR ONLY
- DOOR SHALL BE EQUIPPED WITH AUTOMATIC OPERNER/ CLOSE & ELECTRONIC LOCKS WITH PUSH BOTTOM TRIGGER. HARDWARE SHOULD MATCH ACCORDINGLY

GENERAL HARDWARE NOTES:

- ALL RATED DOORS AND DOORS FRONTING CORRIDORS SHALL HAVE POSITIVE LATCHING LOCKSETS OR LATCHSETS AND CLOSERS.
- ALL DOORS LEADING TO HAZARDOUS SPACES SHALL HAVE TACTILE WARNINGS.
- ALL DOORS EXTING 50 OR MORE PERSONS SHALL HAVE PANIC EXIT DEVICES.
- DOOR HARDWARE ACCESSIBLE TO PERSONS WITH DISABILITIES SHALL BE PROVIDED TO COMPLY WITH UNIFORM FEDERAL ACCESSIBILITY STANDARDS (UFAS)
- HAZARDOUS AREAS MAY INCLUDE: CUSTODIAL SPACES, SHOPS, STORAGE, BOILER ROOMS, TRASH ROOMS, BASEMENT, FINISHING ROOMS, MECHANICAL ROOMS, LABS AND PREP. ROOMS, ELECTRICAL TRANSFORMER VAULTS, AND HIGH SCHOOL ART ROOMS. DOOR OPERATIONAL HARDWARE TO STUDENT SPACES DOES NOT REQUIRE TACTILE WARNINGS, HOWEVER, SOME STAGE DOORS DO.
- THE CONTRACTOR SHALL INSURE THAT ITEMS 1 THRU 5 ARE IMPLEMENTED.

NOTE:
PER CT FIRE SAFETY CODE SUPPLEMENT 10-3.6 (EXCEPTION #2):
SELF-CLOSING DEVICES MAY BE OMITTED ON DOORS BETWEEN CORRIDORS AND CLASSROOMS, EXCEPT ROOMS OR AREAS USED AS SHOPS OR LABORATORIES.
ON DOOR SCHEDULES, LABEL INDICATED AS "B" INDICATES 90 MINUTE FIRE RATING.
ON DOOR SCHEDULES, LABEL INDICATED AS "C" INDICATES 20 MINUTE FIRE RATING.

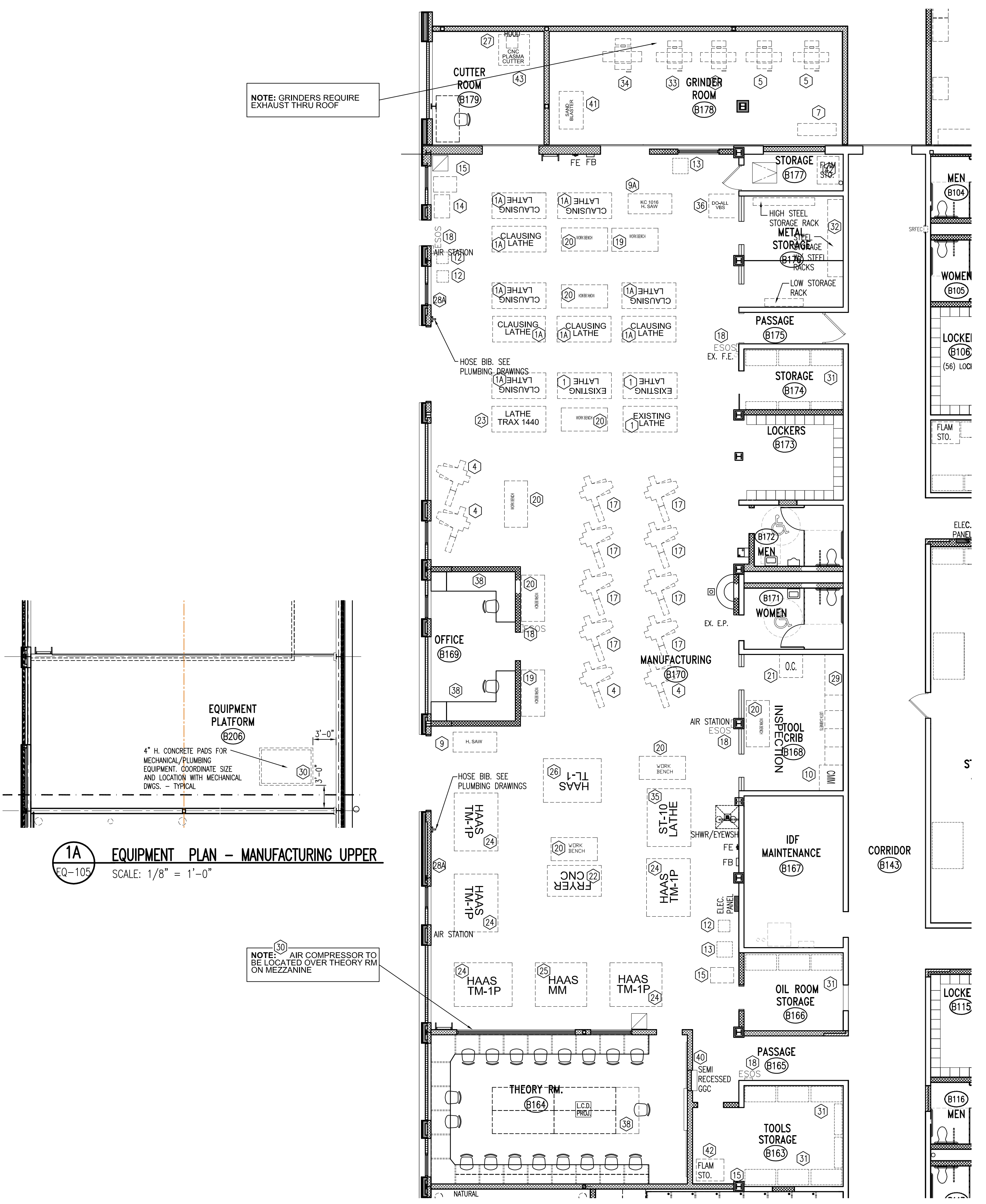
ABBREVIATIONS	
*	INDICATES EXISTING WORK
O	EXISTING
P	PAINT
S	STAIN
EX	EXISTING
H	HOLLOW METAL
WD	WOOD
AL	ALUMINUM
SS	STAINLESS STEEL
F	FACTORY FINISH
FRP	FIBERGLASS REINFORCED POLYESTER
CLP	CROSS LINKED POLYETHYLENE
STL	STEEL
WM	WIRE MESH PARTITION SYSTEM DOOR
GS	GALVANIZED STEEL PIPE
GALV	GALVANIZED STEEL

C-WING UPPER FLOOR DOOR SCHEDULE

DOOR NUMBER	SHEET NUMBER	DOOR				FRAME				REMARKS												
		SIZE (EACH LEAF)				DETAILS-SEE DWG. A-905																
C200	A-103.4	DOUBLE LEAF DOOR	2'-0" x 7'-0" x 1-3/4"	2'-6" x 7'-0" x 1-3/4"	3'-0" x 7'-0" x 1-3/4"	3'-6" x 7'-0" x 1-3/4"	3'-8" x 7'-0" x 1-3/4"	3'-0" x 8'-0" x 1-3/4"	6'-0" x 8'-6" MLT. ROLL-UP	10'-0" x 8'-6" MLT. ROLL-UP	ROLLING GRILLE CURTAIN	3'-0" x 7'-0" (MESH)	F	A-FRP	1-AL	P	H19	J13	T1	18	-	-

CMR BID DOCUMENTS

Consultant		Dwelling Title		STATE OF CONNECTICUT	
ANTINOZZI ASSOCIATES		DOOR SCHEDULE		DEPARTMENT OF PUBLIC WORKS	
Professional Seal & Signature		REVISIONS		Drawing Prepared by	
Mark	Date	Description	ANTINOZZI ASSOCIATES, ARCHITECTS		
2	07-24-2012	ADDENDUM - 02	271 FARMFIELD AVENUE, BRIDGEPORT, CONNECTICUT 06604		
Project			Scale		
ELI WHITNEY CTHSS			NONE		
ADDITIONS AND RENOVATIONS			Drawn By		
71 JONES ROAD			S.J.P.		
			Approved By		
			D.C.F.		
			Drawing No.		
			A-902		
COC No.		Project No.		Bl-RT-837	
04210_A-901					

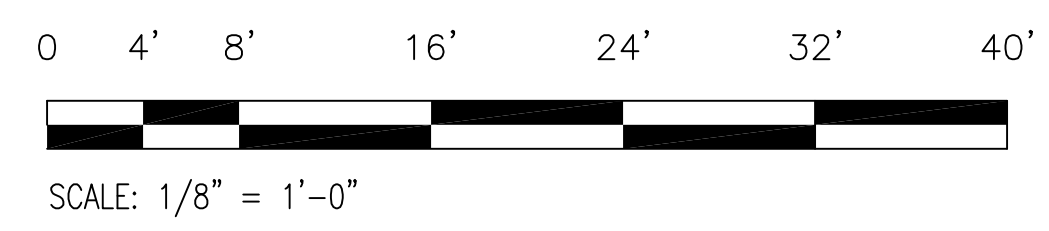
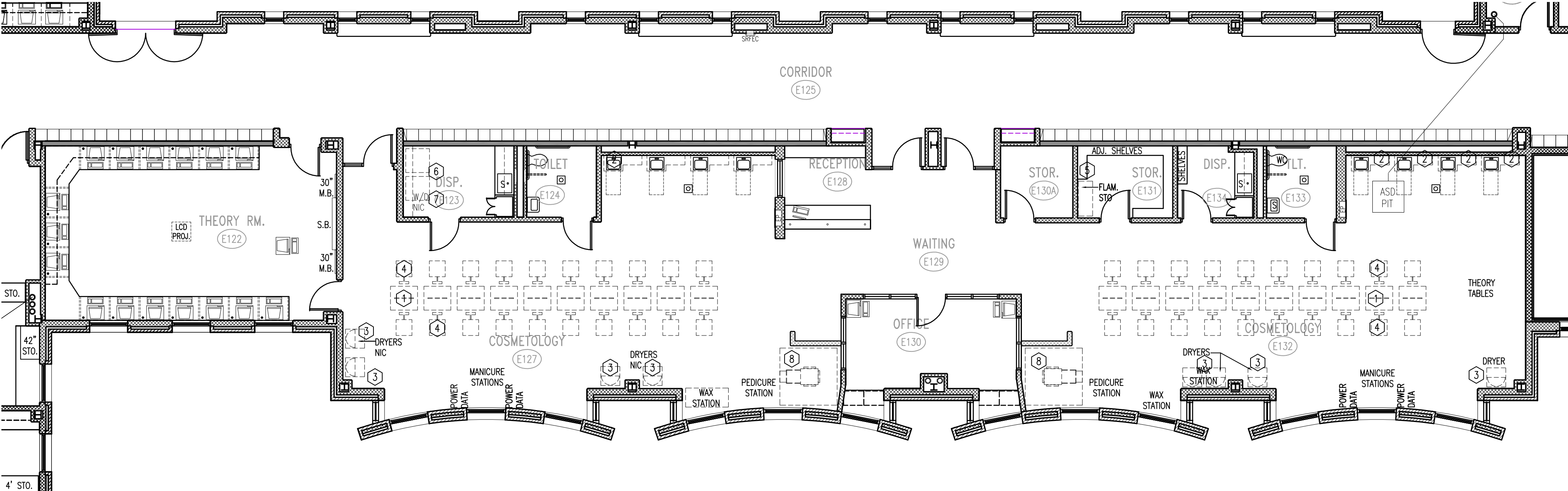


SHOP EQUIPMENT SCHEDULE - MANUFACTURING

ITEM #	DESCRIPTION	MANUFACTURER	MODEL NO.	EXISTING	NEW	FURNISHED & INSTALLED BY OWNER	FURNISHED BY OWNER - INSTALLED BY G.C.	FURNISHED BY G.C. - INSTALLED BY G.C.	EXISTING BY OWNER - G.C. TO REMOVE, STORE, RELOC. & REINSTALL	UTILITIES			POWER			SIZE	NOTES
										AIR	GAS	HOT & COLD WATER	AMPS	VOLTAGE	PHASE		
1	MANUAL LATHES	VARIES	VARIES	●									15	208	3		6654002625, 6654001175, 6651001577
1A	MANUAL LATHES	CLAUSING COLCHESTER	8027 13"x40"		●								15	208	3		
2	CNC BENCH MILL	VARIES	VARIES	●										110			PORTABLE PIECE OF EQUIPMENT. CONVENIENT OUTLET LOCATIONS PROVIDED SEE ELECTRICAL DRAWINGS. CONTROLLER IS 110 1PH 10 AMP
3	(2) AXIS CNC MILL	VARIES	VARIES	●									11	220	3		6654001177, 6654001568, 6654001567 (ALL REQ' EXHAUST)
4	SURFACE GRINDER	VARIOUS	VARIES	●									20	208	3		6654001570
5	SHEETMETAL BREAK	-----	-----	●													6654001572
6	BAND SAW	POWERMATIC	-----	●										208	3		
9A	BAND SAW	CLAUSING	KC1016		●									208	3		
10	CMM	B&S TESLA	-----	●										110			
11	CNC BENCH LATHE	TECHNO	-----	●										110			PORTABLE PIECE OF EQUIPMENT. CONVENIENT OUTLET LOCATIONS PROVIDED SEE ELECTRICAL DRAWINGS.
12	7" PEDESTAL GRINDER	BALDOR	M18/45	●									7	115			6654001539, 6654002951 (ALL REQ' EXHAUST)
13	10" PEDESTAL GRINDER	-----	-----	●									10	115			6654003052 (ALL REQ' EXHAUST)
14	PRESS	-----	-----	●													6654002969
15	15" DRILL PRESS W/ VISE	-----	-----	●									8	208	3		6654000913
17	VERTICAL MILLING MACHINES	BRIDGEPORT	2 AXIS PROTOTRAX EMX	●									11	220	3		MILL IS 220 3PH 11 AMP, CONTROLLER IS 110 1PH 10 AMP
18	EMERGENCY SHUT-OFF SWITCH	-----	-----	●										208	3		BY G.C. (SEE ELECTRICAL DRAWINGS)
19	WORK BENCH	GRANGER	30" X 72"	●													
20	WORK BENCH (ADA)	GRANGER	30" X 72"	●													ADA ACCESSIBLE
21	OPTICAL COMPARATOR	MITUTOYO	172-810TP	●													
22	CNC LATHE	FRYER	-----	●													6654001546
23	CNC LATHE	TRAK	TRL 1630	●									40	208	3		6654001507
24	CNC TOOLROOM MILL	HAAS	TM-P1	●									40	208	3		6654004032, 6654004033, 6654004034, 6654004035
25	CNC MACHINING CENTER	HAAS	MMI-MILL	●									40	208	3		6654004031
26	CNC TURNING CENTER	HAAS	TL-1	●									50	208	3		6654004014
27	CNC PLASMA CUTTER	TECHNO	48" X 48"	●									25-48	220	3		6654003889 (REQUIRES VENTILATION SYSTEM)
28	FLEX EXHAUST	DAYTON	PORTABLE AIR SYSTEM	●										110			PORTABLE PIECE OF EQUIPMENT. CONVENIENT OUTLET LOCATIONS PROVIDED SEE ELECTRICAL DRAWINGS.
28A	SNORKLE EXHAUST	-----	-----	●													
29	LISTA STORAGE CABINETS	-----	-----	●													
30	COMPRESSOR	COMPRESSOR	ROTARY SCREW	●									43	208	3		
31	STORAGE OPEN SHELVING	GRANGER	-----	●													
32	STORAGE RACKS	GRANGER	-----	●													
33	SURFACE GRINDER - AUTOMATIC	CHEVALIER	FSG318-2A618	●									40	220	3		REQUIRES VENTILATION SYSTEM
34	SURFACE GRINDER	CHEVALIER	FSG318	●									40	220	3		REQUIRES VENTILATION SYSTEM
35	CNC TURNING CENTER	HAAS	ST-10	●									50	208	3		
36	VERTICAL BAND SAW	DO-ALL	-----	●									6.7	208	3		
38	TEACHER WORKSTATION	-----	-----	●													
40	GERMICIDAL CLOGGLE CABINET	SELLSTROM	GRANGER #2KMG1	●										120			7.5" CORD, 3 WIRE PLUG
41	SAND BLASTER	-----	-----	●										110			6654001547
42	FLAMMABLE STORAGE CABINET	EAGLE	GRANGER # 6YG17	●													SEE PLUMB./MECH. DWGS. FOR VENTILATION REQUIREMENTS
43	EXHAUST HOOD	-----	-----	●													

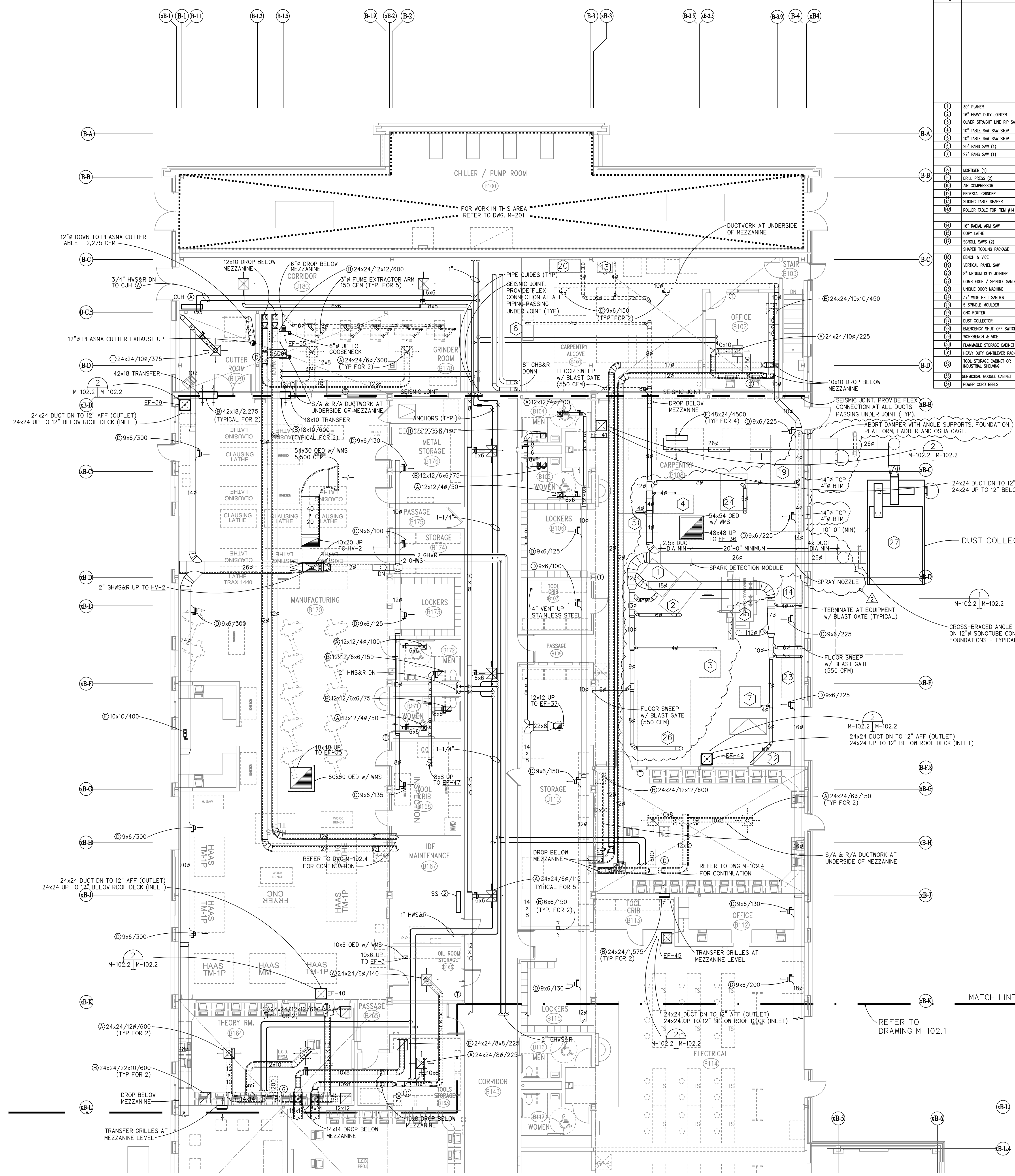
SHOP EQUIPMENT SCHEDULE - COSMETOLOGY

ITEM #	DESCRIPTION	MANUFACTURER	MODEL NO.	EXISTING	NEW	FURNISHED & INSTALLED BY OWNER	FURNISHED BY OWNER - INSTALLED BY G.C.	PROVIDED BY G.C. - INSTALLED BY G.C.	EXISTING BY OWNER - G.C. TO REMOVE, CLEAN, SERVICE, STORE, RELOC. & REINSTALL	UTILITIES			POWER			SIZE	NOTES
										AIR	GAS	HOT & COLD WATER	AMPS	VOLTAGE	PHASE		
1	TWO-STATION COSMETOLOGY STAND	FORMATRON	STY4900SS	●													QUANTITY OF 20. BACK-TO-BACK VANITY (DOUBLE FREE STANDING UNIT) WITH STORAGE (2) BLOW GUN, (2) CLIPPER CUP, (4) LARGE IRONS, (4) SMALL IRONS, (2) 22" MANNEQUIN CLAMPS, (4) LOCKS EACH SIDE KEYPED DIFFERENTLY, (2) ADJUSTABLE SHELF, (4) WIRE PULLS 36"x33" WITH MIRROR PANEL, (2) QUAD OUTLET (OUTLETS TO BE PLACED ON THE INSIDE FACE OF THE RIGHT SIDE OF THE UNIT (WIRING BY GC) UNIT TO BE FIXED TO THE FLOOR USING 1/8" THICK 2"x2"x4" STEEL ANGLE WITH 2 SCREWS IN EACH LEG
2	SHAMPOO STATION WITH SEATING	BELVEDERE	HP14	●													QUANTITY OF 8 (HAMPTON FAMILY) SEE PLUMBING DWGS FOR SINK
3	FIXED CABINET SYSTEM	BELVEDERE	SL61-48QB LTD.	●													FIXED CABINET SYSTEM FOR MOUNTED SHAMPOO BOWL / SINK (SEE PLUMBING DWGS.)
4	SHAMPOO BOWL MOUNTING BRACKET	BELVEDERE	-----	●													SINK SHALL BE MOUNTED TO CABINET BULKHEAD, FURNISHED WITH SHAMPOO BOWL
5	HAIR DRYERS	-----	-----	●													SEE ELECTRICAL DRAWINGS FOR CIRCUITING
6	STYLING CHAIR (3'-0" DEEP)	BELVEDERE	PA12-19CF-LB12FC	●													QUANTITY OF 40 (PACIFIC FAMILY)
7	FLAMMABLE STORAGE CABINET	EAGLE	GRANGER # 6YG17	●													SEE PLUMB./MECH. DWGS. FOR VENTILATION REQUIREMENTS
8	CLOTHS DRYER	-----	-----	●													6" DIA
9	CLOTHS WASHER	-----	-----	●										220			VENT TO EXTERIOR REQUIRED. PRODUCT SHALL HAVE FRONT CONTROLS & BE ADA COMPLIANT
10	PEDICURE STATION	EUROPEAN TOUCH	SOLACE-PF	●										120			PRODUCT SHALL HAVE FRONT CONTROLS & BE ADA COMPLIANT. REQUIRES HOT & COLD WATER, ELECTRICAL HARD PIPED & WIRED

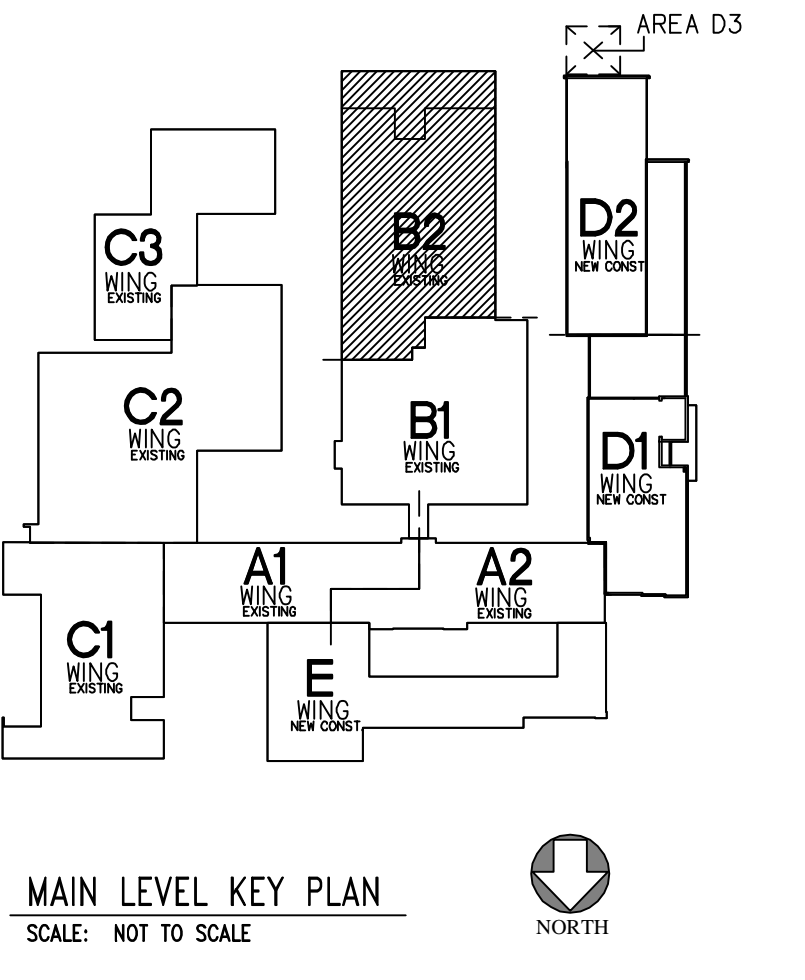
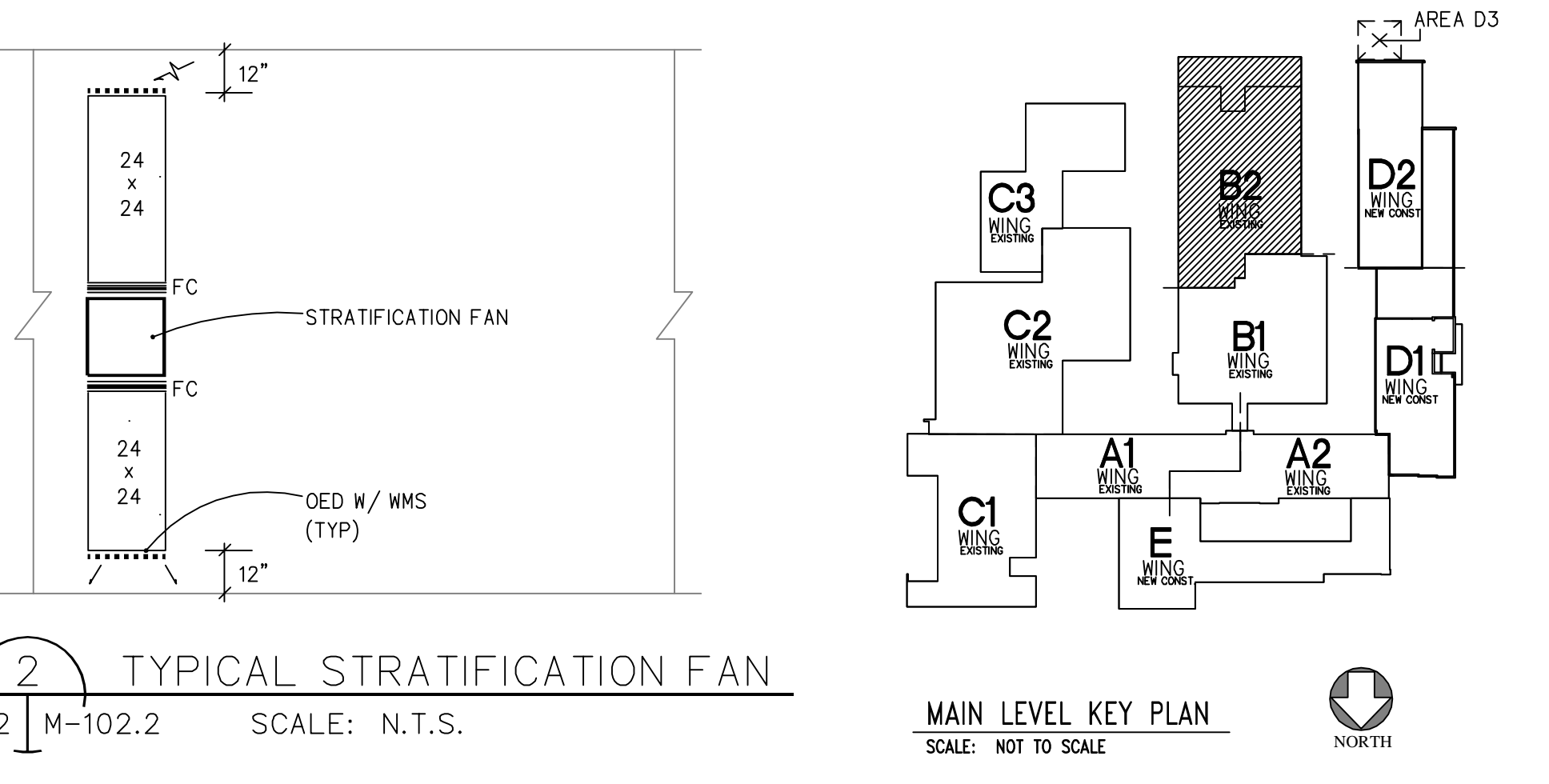
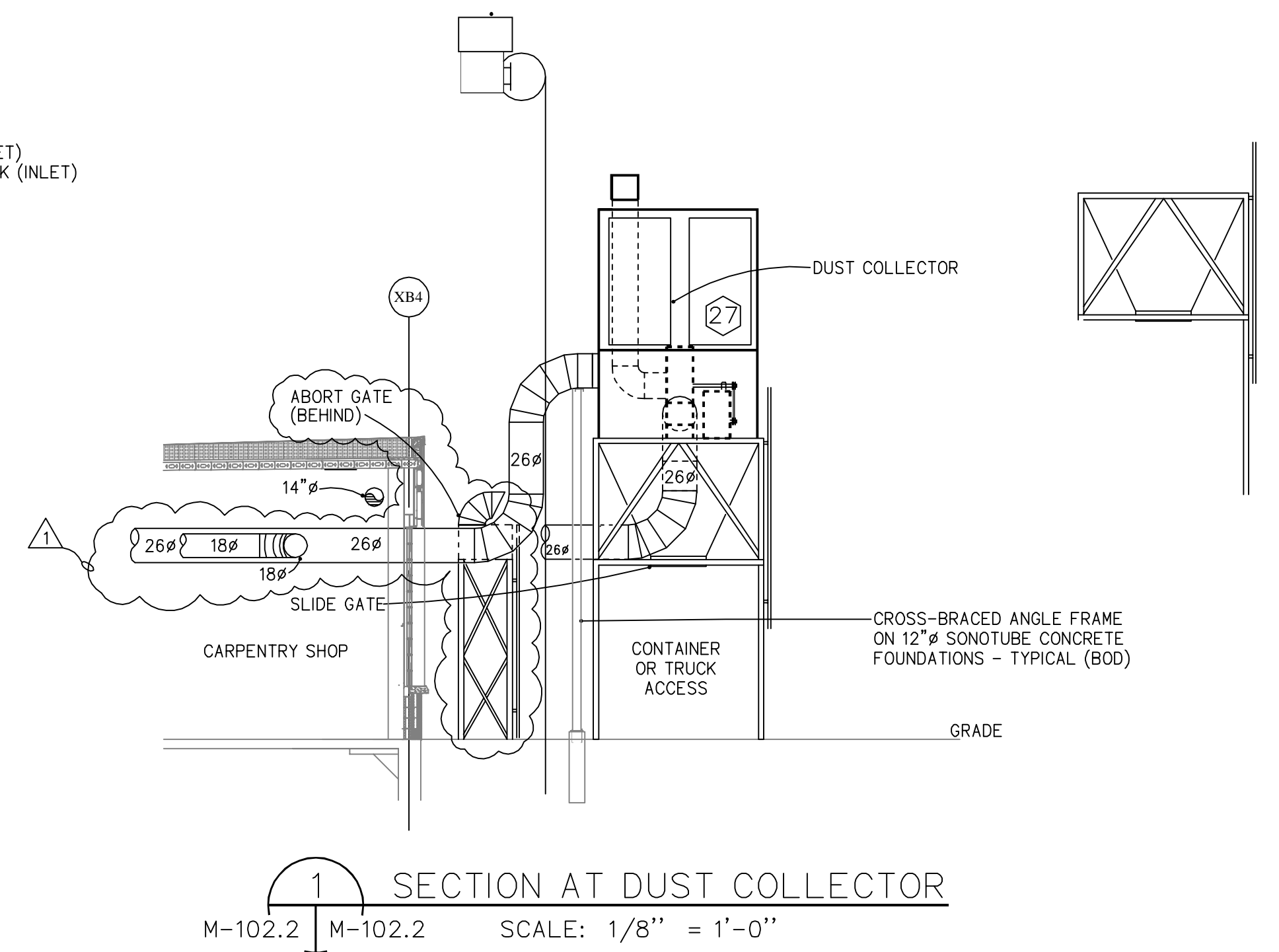


CMR BID DOCUMENTS

Consultant ANTINOZZI ASSOCIATES ARCHITECTS & INTERIORS Professional Seal & Signature	Drawing Title EQUIPMENT PLANS / MANUFACTURING / COSMETOLOGY REVISIONS <table border="1"> <thead> <tr> <th>Mark</th> <th>Date</th> <th>Description</th> </tr> </thead> <tbody> <tr> <td>1</td> <td>07-10-2012</td> <td>ADDENDUM - 01</td> </tr> <tr> <td>2</td> <td>07-24-2012</td> <td>ADDENDUM - 02</td> </tr> </tbody> </table>	Mark	Date	Description	1	07-10-2012	ADDENDUM - 01	2	07-24-2012	ADDENDUM - 02	Drawing Prepared By ANTINOZZI ASSOCIATES, ARCHITECTS 271 FAIRFIELD AVENUE BRIDGEPORT, CONNECTICUT 06604 Project ELI WHITNEY CTHSS ADDITIONS AND RENOVATIONS 71 JONES ROAD Project No. BR-RT-837	Date 06-19-2012 Scale 1/8"=1'-0" Drawn By Approved By D.C.F. Drawing No. EQ-106
Mark	Date	Description										
1	07-10-2012	ADDENDUM - 01										
2	07-24-2012	ADDENDUM - 02										



SHOP EQUIPMENT SCHEDULE - CARPENTRY				EXISTING	NEW	FURNISHED & INSTALLED BY OWNER	FURNISHED BY OWNER - INSTALLED BY C.C.	FURNISHED BY OWNER - INSTALLED BY C.C. - REMOVING STORE, RELOC. & REINSTALL	UTILITIES	POWER	DUCT SIZE	CFM	NOTES
1	30" PLANER	NORTHFIELD	# 8								12"	1500	
2	16" HEAVY DUTY JOINTER	NORTHFIELD	16" HEAVY DUTY								12"	800	
3	OLIVER STRAIGHT LINE RP SAW	OLIVER	ECONOMY								12"	750	
4	10" TABLE SAW STOP	SAW STOP	SAW STOP CAP								12"	650	
5	10" TABLE SAW STOP	SAW STOP	SAW STOP CAP								12"	650	
6	20" BAND SAW (1)	NORTHFIELD	20"								12"	400	
7	27" BAND SAW (1)	NORTHFIELD	27"								12"	400	
8	MORTISER (1)	OLIVER	5125								12"	1500	
9	DRILL PRESS (2)	POWERMATIC	FM 2800								12"	115 VOLT	SEE PLUMBING DRAWINGS
10	AIR COMPRESSOR	-----	-----								12"	115 VOLT	SEE PLUMBING DRAWINGS
11	PEDESTAL GRINDER	GRANER	2L909								12"	115 VOLT	STAND - GRANER 42154 (BY OWNER)
12	SLIDING TABLE SHAPER	POWERMATIC	TS 29								12"	7.5"	4" 650
13	ROLLER TABLE FOR ITEM #14	-----	-----								12"	7.5"	4" 650
14	14" RICAL ARM SAW	NORTHFIELD	UNIFORM								12"	7.5"	4" 500
15	COPIY LATHE	CENTAURO	TC 1200								12"	5"	---
16	SOROLL SINGS (2)	HEGENER	22V								12"	115 VOLT	---
17	SHAPER TOOLING PACKAGE	-----	-----								12"	---	---
18	BENCH & VICE	GRANER	#B30514 & #B34472								12"	---	---
19	METAL PANEL SAW	STRIBERG	COMPACT								12"	700 X 4"	800
20	14" MEDIUM DUTY JOINTER	NORTHFIELD	8" MD								12"	3"	12" 800
21	COMB EDGE / SPINDLE SANDER	KUNIG	UNIG								12"	5"	6" 885
22	UNIQUE DOOR MACHINE	UNIQUE	GT 250								12"	10"	5" 1000
23	37" WIDE BELT SANDER	BOHNE / DURAMAC	37"								12"	21"	6" 885
24	5 SPINDLE MOULDER	UNIMAT	GOLD								12"	55"	12" 500
25	ONE WHEELER	UNIG	7510								12"	57"	4" 1500
26	DUST COLLECTOR	HEGENER TOOL & MFG.	40-29								12"	40"	24" 16,000
27	EMERGENCY SHUT-OFF SWITCH	-----	-----								12"	---	---
28	WORKBENCH & VICE	GRANER	-----								12"	---	---
29	FLAMMABLE STORAGE CABINET	EAGLE	GRANER #R017								12"	---	---
30	HEAVY DUTY CANTILEVER RACK	CISCO EAGLE	SERIES 25								12"	---	---
31	TOOL STORAGE CABINET OR INDUSTRIAL SHELVING	-----	-----								12"	---	---
32	GEOMETRICAL COGGED CABINET	SELLSTROM	GRANER #XW01								12"	---	---
33	POWER CORD REELS	-----	-----								12"	---	---

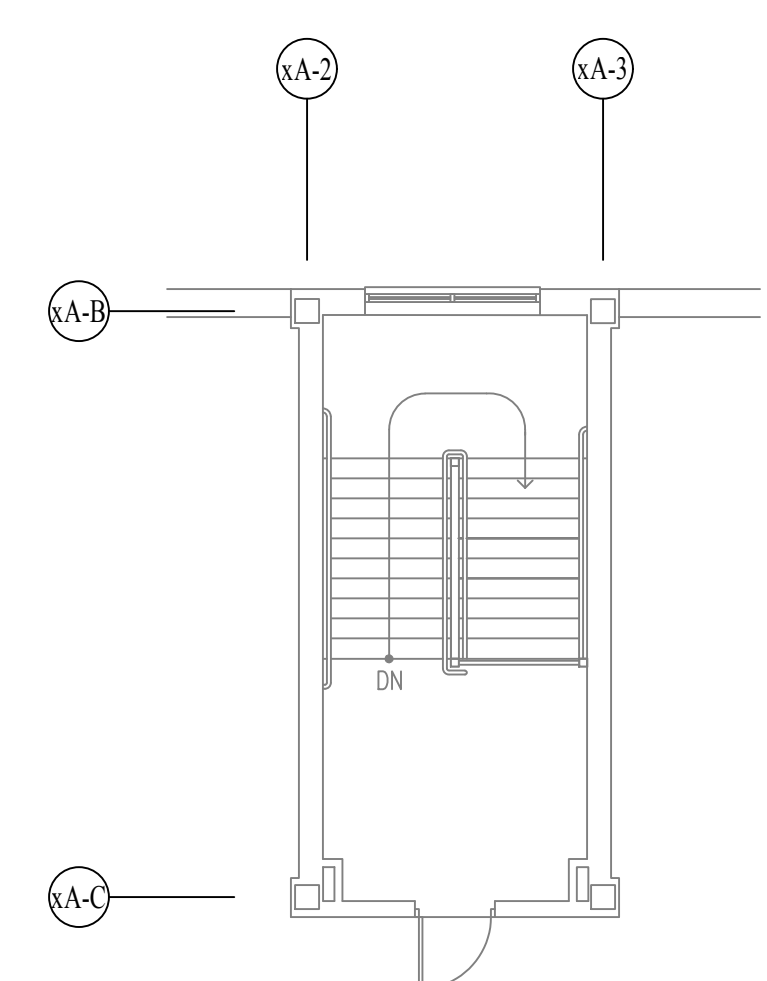
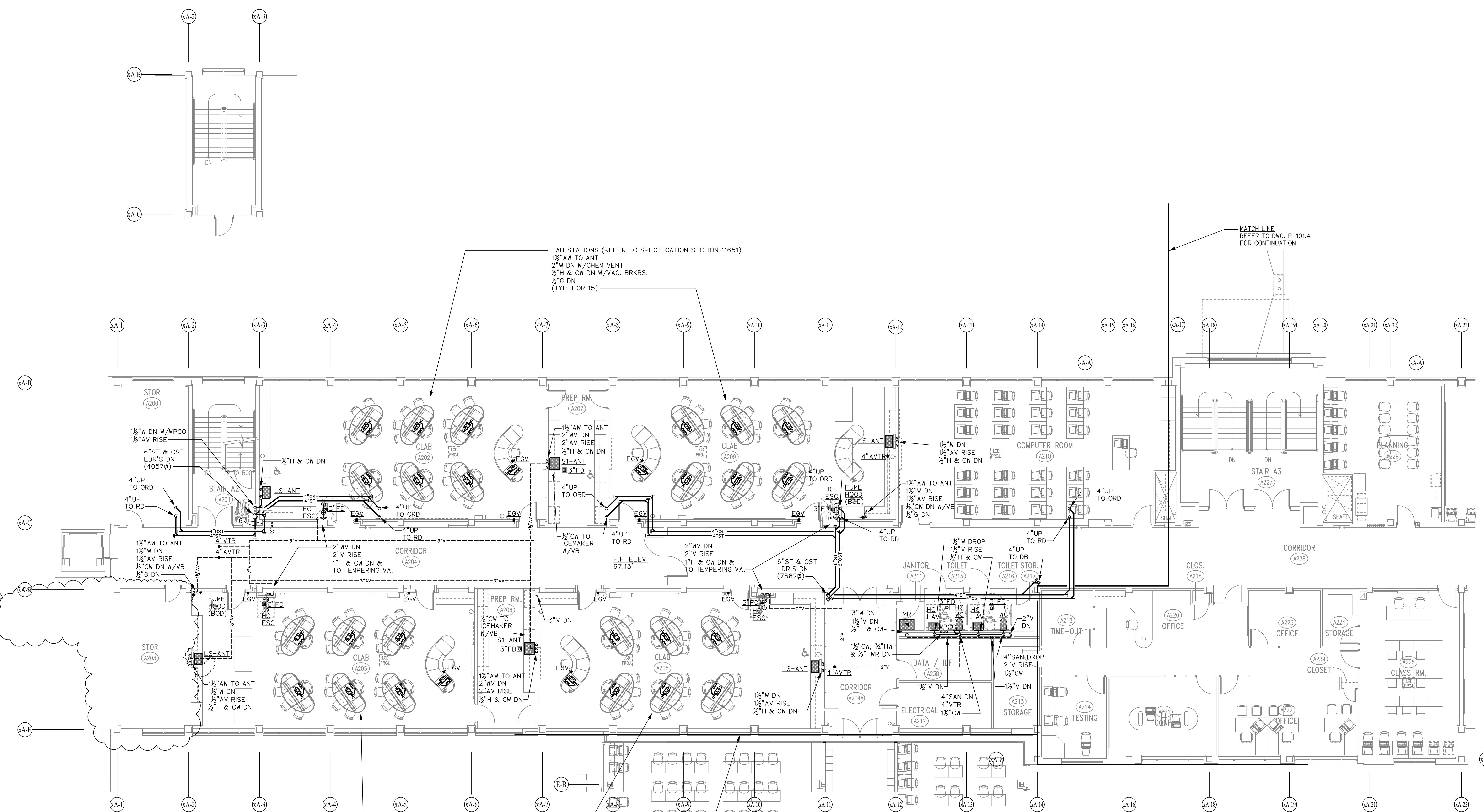


NOTE: REFER TO DRAWINGS M-301, M-302 AND M-303 FOR CONNECTION DETAILS OF EQUIPMENT SHOWN ON THIS DRAWING.

CMR BID DOCUMENTS

Consultant: AltieriSeburWieber LLC Consulting Engineers 31 Knight Street, Norwalk, Connecticut 06851 Tel: 203-866-5338	Drawing Title: AREA B2 MAIN LEVEL MECHANICAL	State of Connecticut DEPARTMENT OF PUBLIC WORKS
Professional Seal & Signature: 	REVISIONS	Drawing Prepared By: ANTINOZZI ASSOCIATES, ARCHITECTS 271 FAIRFIELD AVENUE, BRIDGEPORT, CONNECTICUT 06604
Original Seal and Signature is Blue	2 07-24-12 ADDENDUM - 02	Date: 08-18-2012 Scale: 1/8"=1'-0"
		Drawn By: ASW Approved By: PCS Drawing No.:
		Project No.:
		Project No.:

FILE:0491B REV:02/01/2007 17:15 FILE:0491B REV:02/25/2012 08:22 FILE:0491B REV:07/24/12 13:32

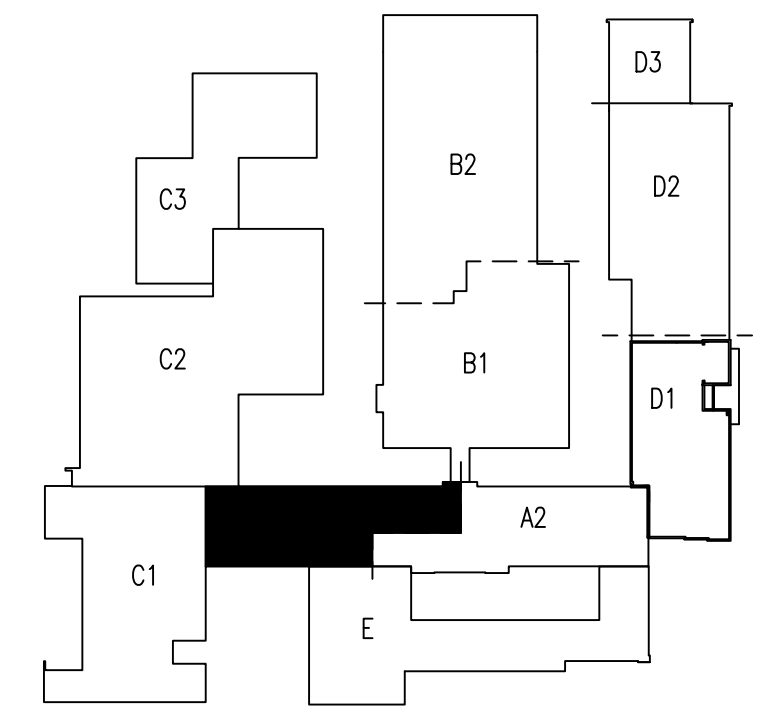


MATCH LINE
REFER TO DWG. P-101.4
FOR CONTINUATION

LAB STATIONS (REFER TO SPECIFICATION SECTION 11651)
1/2" AW TO ANT
2" W DN W/CHEM VENT
1/2" H & CW DN W/VAC. BRKRS.
1/2" G DN
(TYP. FOR 15)

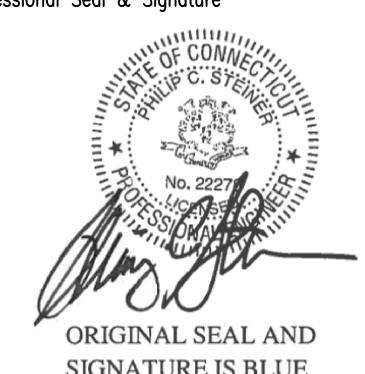
LAB STATIONS (BY OTHER DIVISION)
1/2" AW TO ANT
2" W DN W/CHEM VENT
1/2" H & CW DN W/VAC. BRKRS.
1/2" G DN
(TYP. FOR 14)

MATCH LINE
REFER TO DWG. P-105.2
FOR CONTINUATION

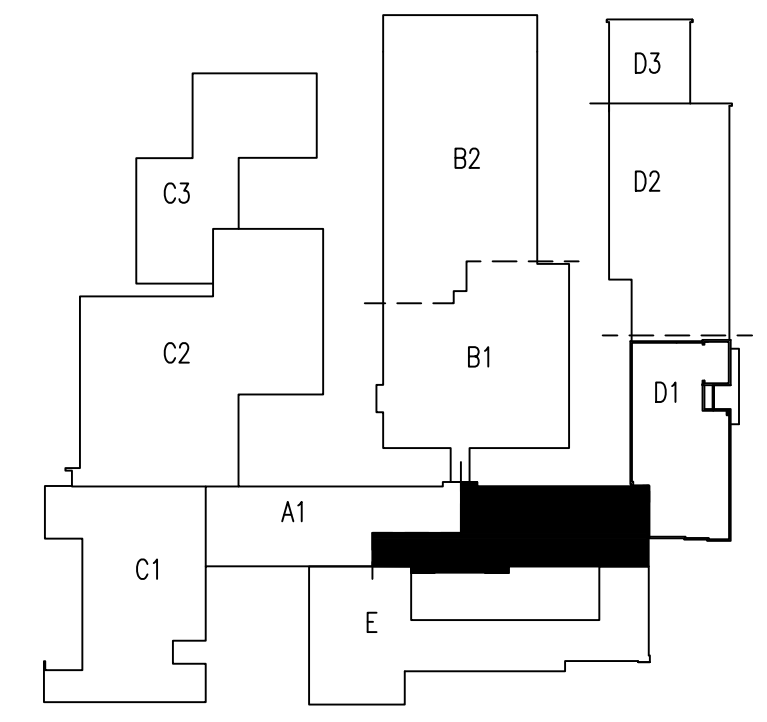
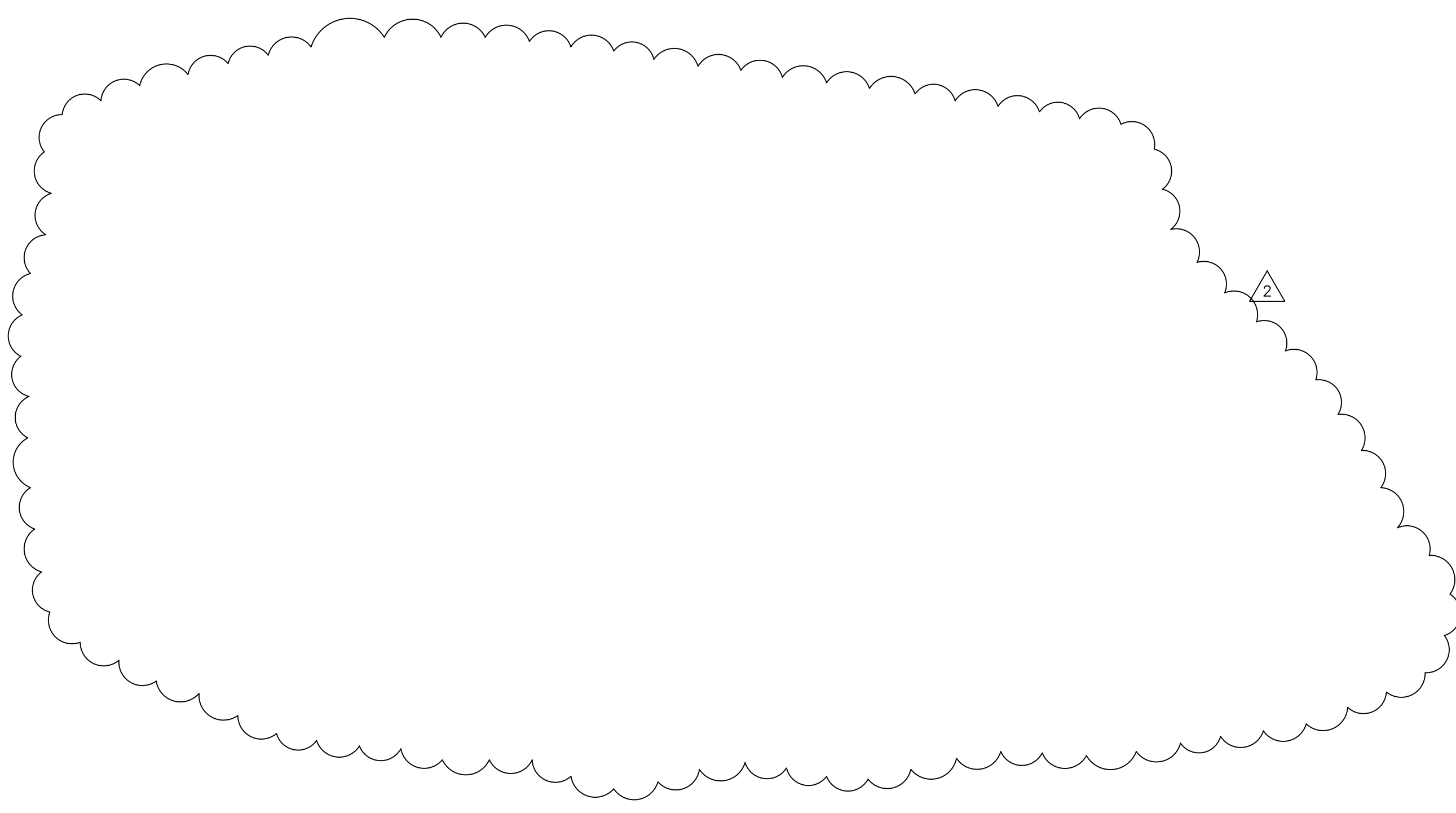
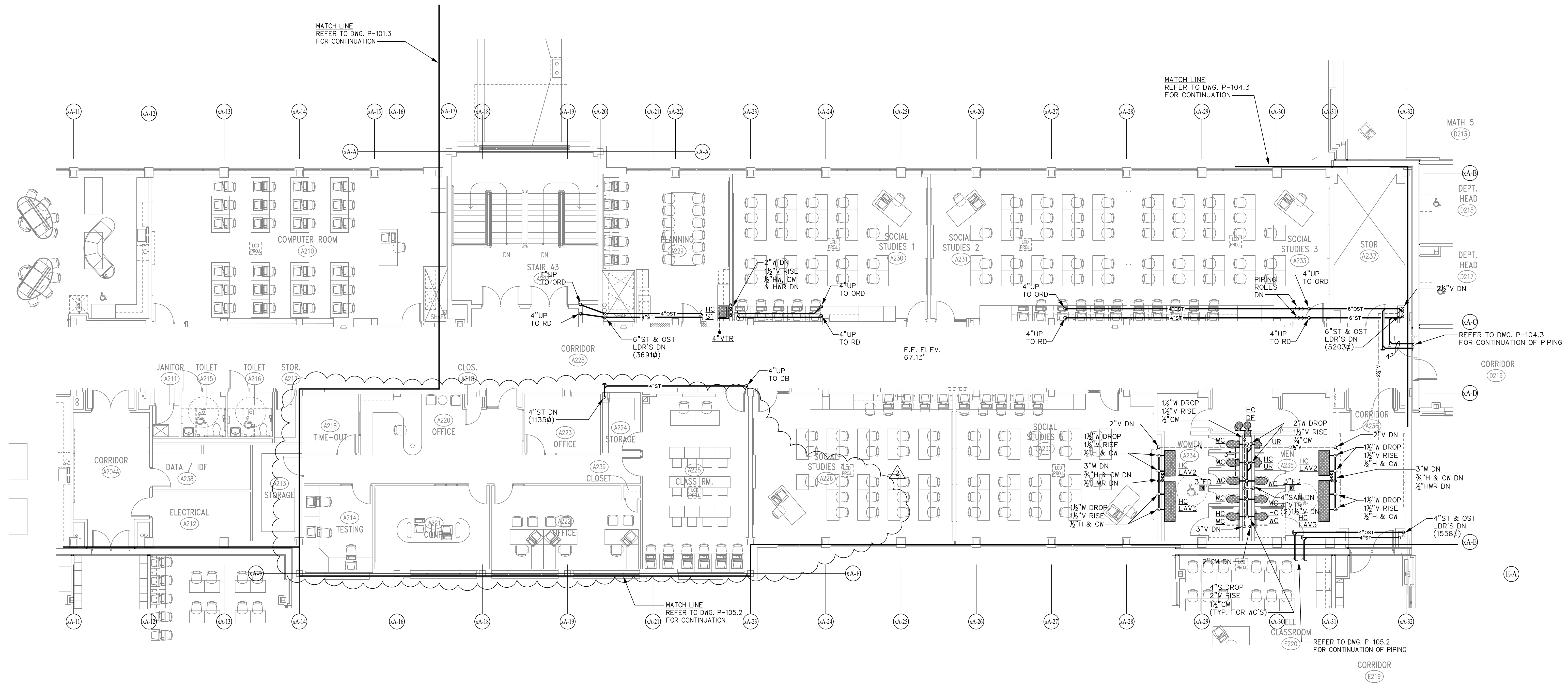


SECOND FLOOR KEY PLAN
SCALE: NOT TO SCALE

CMR BID DOCUMENTS

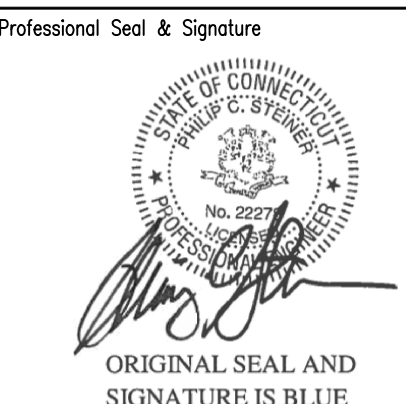
Consultant Altieri/Sebor/Wieher LLC Consulting Engineers 31 Knight Street, Norwalk, Connecticut 06851 PH: 203-866-5338 FX: 203-866-5343	Drawing Title AREA A1 UPPER LEVEL PLUMBING		STATE OF CONNECTICUT DEPARTMENT OF PUBLIC WORKS	
	Professional Seal & Signature 		Drawing Prepared By ANTINOZZI ASSOCIATES, ARCHITECTS 271 FARMFIELD AVENUE BRIDGEPORT, CONNECTICUT 06604	
REVISIONS			Date 06-18-2012	
2 07-24-12 ADDENDUM 2			Scale 1/8"=1'-0"	
Project ELI WHITNEY CTHSS ADDITIONS AND RENOVATIONS 71 JONES ROAD HAMDEN, CT 06514			Drawn By MFG	
Drawing No. P-101.3			Approved By PCS	
Project No. BI-RT-837			Drawing No.	

FILE:045125P REV:06/22/06 13:24
 FILE:045125P REV:04/26/2012 14:38
 FILE:045125P REV:02/07/2007 17:15
 FILE:045125P REV:07/24/12 10:18

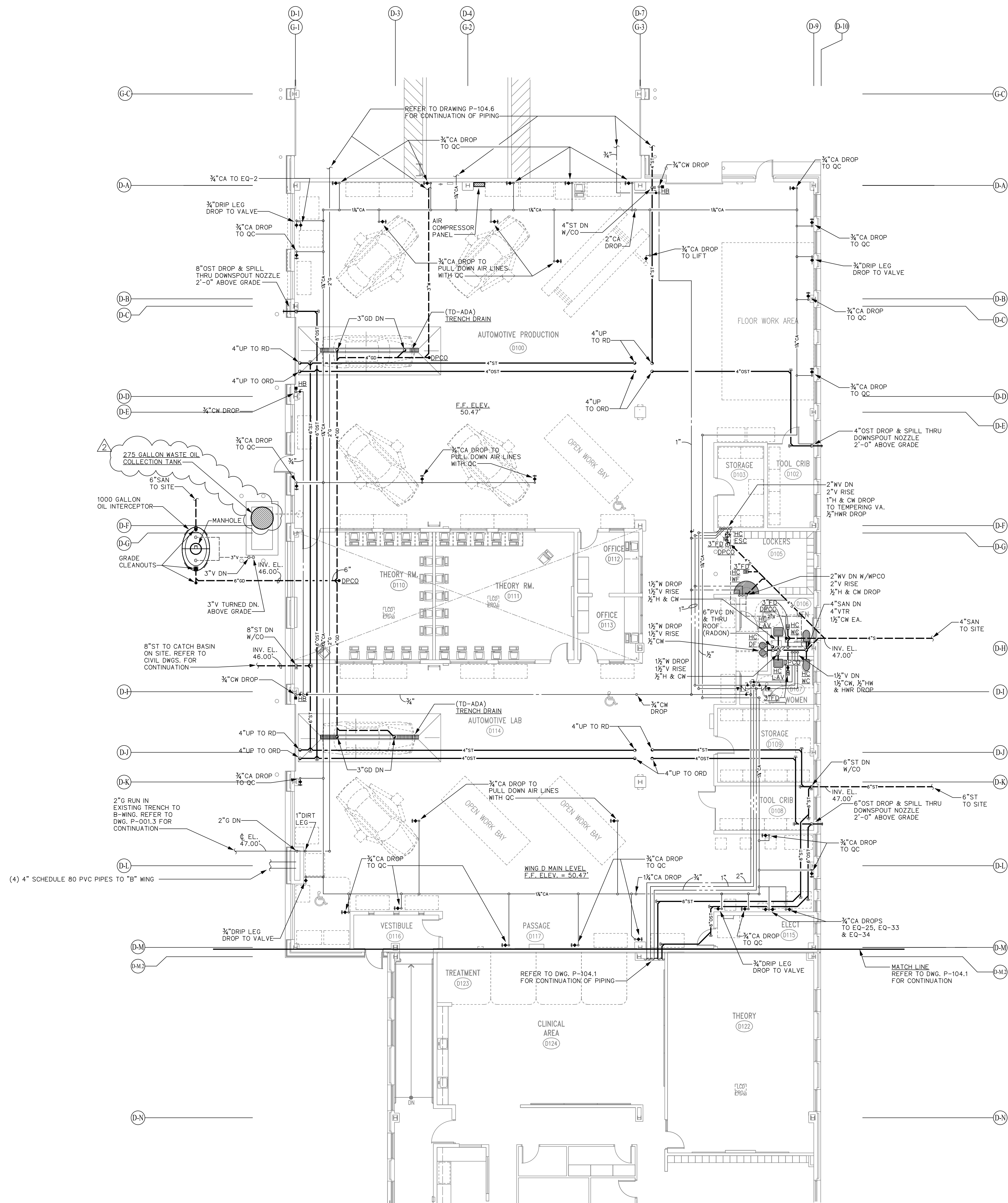


SECOND FLOOR KEY PLAN
SCALE: NOT TO SCALE

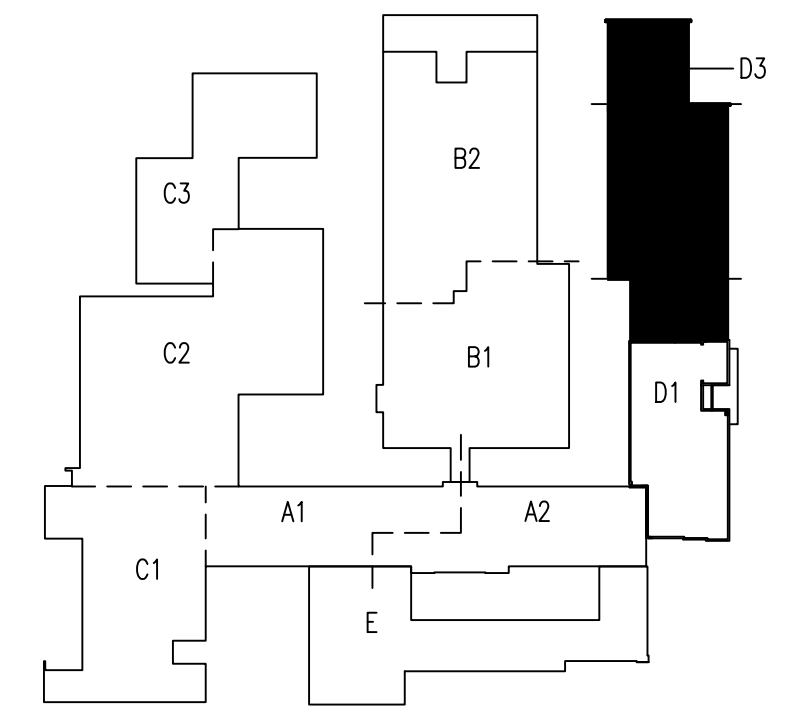
CMR BID DOCUMENTS

Consultant: AltieriSeberWieber LLC Consulting Engineers 31 Knight Street, Norwalk, Connecticut 06851 PH: 203-866-5338 FX: 203-866-5343		Drawing Title: AREA A2 UPPER LEVEL PLUMBING		STATE OF CONNECTICUT DEPARTMENT OF PUBLIC WORKS							
Professional Seal & Signature:  ORIGINAL SEAL AND SIGNATURE IS BLUE		REVISIONS		Drawing Prepared By: ANTONOZZI ASSOCIATES, ARCHITECTS 271 FARMFIELD AVENUE BRIDGEPORT, CONNECTICUT 06604							
		<table border="1"> <thead> <tr> <th>Mark</th> <th>Date</th> <th>Description</th> </tr> </thead> <tbody> <tr> <td>2</td> <td>07-24-12</td> <td>ADDENDUM 2</td> </tr> </tbody> </table>		Mark	Date	Description	2	07-24-12	ADDENDUM 2	Date: 06-18-2012 Scale: 1/8"=1'-0"	
Mark	Date	Description									
2	07-24-12	ADDENDUM 2									
		Project: ELI WHITNEY CTHSS ADDITIONS AND RENOVATIONS 71 JONES ROAD HAMDEN, CT 06514		Drawn By: MFC Approved By: PCS Drawing No.: P-101.4							
		Drawing No.: 045123P		Project No.: BI-RT-837							

FILE:045123P REV:06/22/06 13:24
 FILE:045123P REV:04/26/2012 15:10
 FILE:045123P REV:02/07/2007 17:15
 FILE:045123P REV:07/24/12 10:18

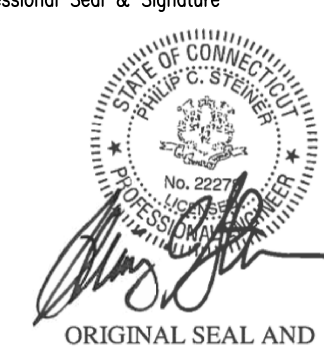


NOTE
REGULATOR'S (PROVIDED BY OWNER)
TO BE INSTALLED ON ALL
COMPRESSED AIR OUTLETS
REFER TO EQUIPMENT PLANS
FOR ADDITIONAL INFORMATION
IN SHOPS



FIRST FLOOR KEY PLAN
SCALE: NOT TO SCALE

CMR BID DOCUMENTS

Consultant AltieriSeberWieber LLC Consulting Engineers 31 Knight Street, Norwalk, Connecticut 06851 PH: 203-866-5338 FX: 203-866-5243		Drawing Title AREA D2 MAIN LEVEL PLUMBING		STATE OF CONNECTICUT DEPARTMENT OF PUBLIC WORKS	
Professional Seal & Signature 		REVISIONS		Drawing Prepared By ANTINOZZI ASSOCIATES, ARCHITECTS 271 FARMFIELD AVENUE BRIDGEPORT, CONNECTICUT 06604	
Mark 2	Date 07-24-12	Description ADDENDUM 2		Project ELI WHITNEY CTHSS ADDITIONS AND RENOVATIONS 71 JONES ROAD HAMDEN, CT 06514	Date 06-18-2012 Scale 1/8"=1'-0" Drawn By MFC Approved By PCS Drawing No. P-104.2
CAD No. 045111P		Project No. BI-RT-837			

FILE:045111P REV:06/22/06 11:31
 FILE:045111P REV:04/25/2012 15:26
 FILE:045111P REV:02/07/2007 17:15
 FILE:045111P REV:07/24/12 10:18