

**BRICK AND COATING REPAIRS AVCRAD
138 TOWER AVENUE
GROTON, CONNECTICUT
PROJECT: BI- Q - 643**

BID OPENING	1:00 P.M.	AUGUST 24, 2011
ADDENDUM NUMBER 1	DATE OF ADDENDUM	AUGUST 15, 2011

The following clarifications are applicable to drawings and specifications for the project referenced above.

Item 1

In Section 01 52 13, Paragraph B add the following:

G.C. shall allow for installation of approximately 500 LF of power cabling to tie-in to existing power source within existing weld shop. Maximum amperage available to Field Office available shall be 100 amps.

Item 2

All exterior windows (including frames, sashes, etc.) and exterior doors and frames shall be painted. Refer to specification section 099113 herein for additional information.

Item 3

Prior to commencement of this Contract, a new PVC impregnated polyester weave fabric clad metal frame building will be erected (by others) near the South-West corner of the existing facility (corner of elevations 26/A1.01 and 28/A1.01). New structure will be located approximately 10 feet from the West wall (elevation 26/A1.01) and 7 feet from the South hangar wall (elevation 28/A1.01). Refer to the page 3 of this addendum for further information. G.C. shall protect new structure at all times during Contract Scope of Work and be responsible, at no cost to the Owner or Agency, for repairing any damage sustained to structure during Scope of Work.

Item 4

The Project construction will not begin until the Spring of 2012. Contractor's bids shall assume no Winter Conditions are required. Prices submitted shall be held until Spring 2012. Time between Contract Award (end of September 2011) and Commencement of Construction shall be utilized for shop drawing approval, ordering materials, etc.

Item 5

Pre-Bid Walkthrough Question:

Question: Is the asbestos work to be included in the G.C. Contract?

Answer: *Yes, the asbestos work indicated within contract documents shall be included within the G.C.'s Contract and bid price.*


Item 6

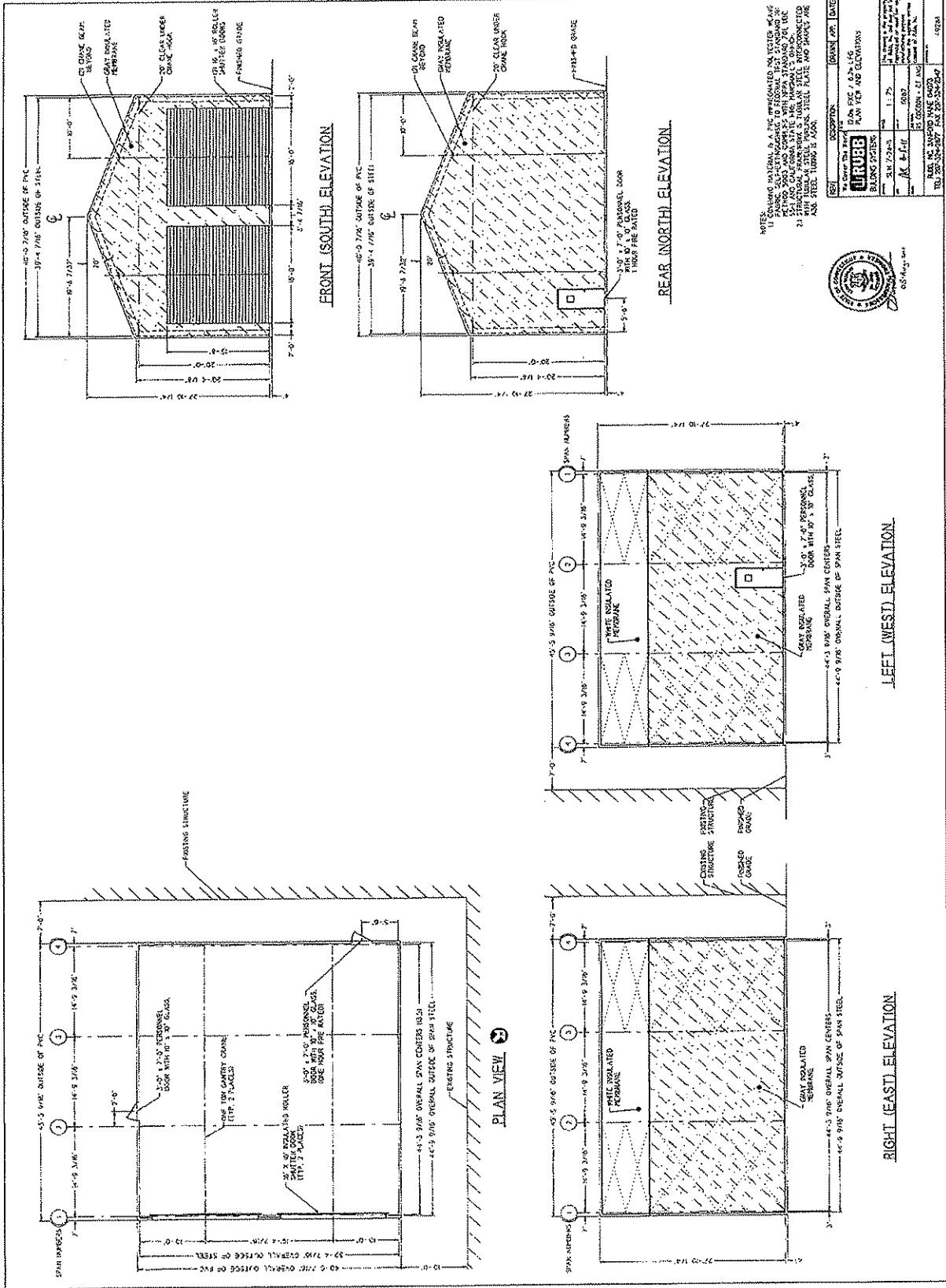
Pre-Bid Walkthrough Question:

Question: What type of metal panel is to be used?

Answer: *New metal panels shall be insulated metal panels in a vertical system.*

All questions must be in writing (not phone or e-mail) and must be forwarded to the consulting Architect/Engineer Amenta Emma Architects PC (Tom Quarticelli, AIA and Fax Number 860.549.1956) with a copy sent to the DCS Project Manager (Ward Ponticelli, RA and Fax Number 860.713.7261).


Mellanee Walton, Associate Fiscal
Administrative Officer Supervisor
Department of Administrative Services



BI-Q-643
 Date: August 8, 2011
 Meeting Start Time: 10:00 AM
 Meeting Location: AVCRAD 138 Tower Ave, Groton CT
 Meeting Purpose: Pre-Bid Meeting
 Pre-Construction Meeting
 Other:

Name: Ward Ponticelli, RA <i>WP</i>	Title: Project Manager
Company/Department: State of CT/ Dept of Construction Services	E-mail: ward.ponticelli@ct.gov
Street: 155 Capitol Ave Rm 460	Phone: 860.713.5944 Cell: 860.306.8508
City/State/Zip: Hartford, CT 06106	FAX: 860.713.7261

Name: Ed Fulton, Jr, CDT <i>EF</i>	Title: Architectural Design Reviewer
Company/Department: Military Dept	E-mail: ed.fulton@us.army.mil
Street: 360 Broad Street	Phone: 860.548.3274 Cell:
City/State/Zip: Hartford, CT 06105	FAX: 860.706.5093

Name: Tom Quarticelli, AIA <i>TQ</i>	Title: Principal
Company/Department: Amenta Emma Architects pc	E-mail: tqarticelli@amentaemma.com
Street: 201 Ann Street	Phone: 860.549.4725 Cell: 860.
City/State/Zip: Hartford, CT 06103	FAX: 860.523.8067

Name: CHRIS LEVADRE	Title: PROJECT ARCHITECT
Company/Department: AMENTAEMMA	E-mail: clevad@amentaemma.com
Street: 201 ANN STREET	Phone: 860-549-4725 Cell:
City/State/Zip: HARTFORD, CT 06103	FAX:

Name: Curtis Corbett	Title: VP
Company/Department: Advanced Crawling & Restoration	E-mail: Advancedcrawling@stcglobal.net
Street: 75 Elliott St. E.	Phone: 860-296-9388 Cell: 860-982-0634
City/State/Zip: Hart. Blvd, CT 06114	FAX: 860-296-0751

Name: Rob Abatecola	Title: Corp. Sec.
Company/Department: Alpha Omega Const.	E-mail: Rob@aoigroup.net
Street: PO Box 14193	Phone: 508-641-7622 (m) Cell:
City/State/Zip: East Providence RI	FAX: 508-399-7345

BI-Q-643
 Date: August 8, 2011
 Meeting Start Time: 10:00 AM
 Meeting Location: AVCRAD 138 Tower Ave, Groton CT

Name: DON RAEL / DAVID DRANK	Title: SUPER
Company/Department: KRONBERGER & SON	E-mail:
Street: 175 INDUSTRIAL PARK RD	Phone: 860 397 4600
City/State/Zip: MIDDLETOWN CT 06457	Cell: 860 393 0809
	FAX: 860 393 0809

Name: Luisa Capasso	Title: Admin
Company/Department: G.L. Capasso, Inc.	E-mail: lcapasso@glcapasso.com
Street: 34 Lloyd St	Phone: 203-469-2810
City/State/Zip: New Haven, CT 06513	Cell:
	FAX: 203-234-9424

Name: RONALD S. WILFINGER	Title: CONSTRUCTION SPECIALIST I
Company/Department: 56th MIL DEPT	E-mail: ronald.wilfinger@us.army.mil
Street: 300 Broad St	Phone: 860 521-4985
City/State/Zip: HARTFORD, CT 06105	Cell: 800 883-4771
	FAX: 860 548-3260

Name: CHRIS HILBERT	Title: J.P.
Company/Department: NER CONSTRUCTION	E-mail: chilbert@nerconstruction.com
Street: 170 FRONT AVE	Phone: 203 957 6666
City/State/Zip: WEST HAVEN CT 06516	Cell: 860 883 3670
	FAX: 203 957 0633

Name: Karl Bagwell	Title: Project Manager
Company/Department: Yankee Remodeler	E-mail: chris@yankee remodeler.com
Street: 95 Truman Street	Phone:
City/State/Zip: New London, CT 06320	Cell: 860 235-0837
	FAX:

Name:	Title:
Company/Department:	E-mail:
Street:	Phone:
City/State/Zip:	Cell:
	FAX:

SECTION 099113

EXTERIOR PAINTING

PART 1 - GENERAL

1.1 RELATED DOCUMENTS

- A. Drawings and general provisions of the Contract, including General and Supplementary Conditions and Division 01 Specification Sections, apply to this Section.

1.2 SUMMARY

- A. Section includes surface preparation and the application of paint systems on the following exterior substrates:
 - 1. Steel windows (including frames) and exterior doors and frames.

1.3 DEFINITIONS

- A. Gloss Level 5: 35 to 70 units at 60 degrees, according to ASTM D 523.

1.4 ACTION SUBMITTALS

- A. Product Data: For each type of product. Include preparation requirements and application instructions.
- B. Samples for Initial Selection: For each type of topcoat product.
- C. Samples for Verification: For each type of paint system and each color and gloss of topcoat.
 - 1. Submit Samples on rigid backing, 8 inches square.
 - 2. Step coats on Samples to show each coat required for system.
 - 3. Label each coat of each Sample.
 - 4. Label each Sample for location and application area.
- D. Product List: For each product indicated, include the following:
 - 1. Cross-reference to paint system and locations of application areas. Use same designations indicated on Drawings and in schedules.
 - 2. Printout of current "MPI Approved Products List" for each product category specified, with the proposed product highlighted.
 - 3. VOC content.

BRICK AND COATING REPAIR (AVCRAD)
DPW PROJECT NUMBER: BI-Q-643
A/E PROJECT NUMBER: 10054

1.5 MAINTENANCE MATERIAL SUBMITTALS

- A. Furnish extra materials, from the same product run, that match products installed and that are packaged with protective covering for storage and identified with labels describing contents.
1. Paint: 5 percent, but not less than 1 gal. of each material and color applied.

1.6 DELIVERY, STORAGE, AND HANDLING

- A. Store materials not in use in tightly covered containers in well-ventilated areas with ambient temperatures continuously maintained at not less than 45 deg F.
1. Maintain containers in clean condition, free of foreign materials and residue.
 2. Remove rags and waste from storage areas daily.

1.7 FIELD CONDITIONS

- A. Apply paints only when temperature of surfaces to be painted and ambient air temperatures are between 50 and 95 deg F.
- B. Do not apply paints in snow, rain, fog, or mist; when relative humidity exceeds 85 percent; at temperatures less than 5 deg above the dew point; or to damp or wet surfaces.

PART 2 - PRODUCTS

2.1 MANUFACTURERS

- A. Manufacturers: Subject to compliance with requirements, provide products by one of the following:
1. Benjamin Moore & Co.
 2. PPG Architectural Finishes, Inc.
 3. Sherwin-Williams Company (The).
- B. Products: Subject to compliance with requirements, provide one of the products listed in other Part 2 articles for the paint category indicated.

2.2 PAINT, GENERAL

- A. MPI Standards: Provide products that comply with MPI standards indicated and that are listed in its "MPI Approved Products List."

BRICK AND COATING REPAIR (AVCRAD)
DPW PROJECT NUMBER: BI-Q-643
A/E PROJECT NUMBER: 10054

- B. Material Compatibility:
1. Provide materials for use within each paint system that are compatible with one another and substrates indicated, under conditions of service and application as demonstrated by manufacturer, based on testing and field experience.
 2. For each coat in a paint system, provide products recommended in writing by manufacturers of topcoat for use in paint system and on substrate indicated.
- C. VOC Content: Provide materials that comply with VOC limits of authorities having jurisdiction.
- D. Colors: As selected by Architect from manufacturer's full range.
1. 30 percent of surface area will be painted with deep tones.

2.3 METAL PRIMERS

- A. Primer, Alkyd, Anti-Corrosive for Metal: MPI #79.
1. Benjamin Moore & Co.; Super Spec HP - Alkyd Metal Primer.
 2. PPG Architectural Finishes, Inc.; Speedhide - Interior/Exterior Rust Inhibitive Steel Primers.
 3. Sherwin-Williams Company; Protective & Marine - Kem Kromik Universal Primer.

2.4 WATER-BASED PAINTS

- A. Light Industrial Coating, Exterior, Water Based, Semi-Gloss (Gloss Level 5): MPI #163.
1. Benjamin Moore & Co.; Super Spec High Performance - DTM Acrylic Semi Gloss.
 2. PPG Architectural Finishes, Inc.; Pitt-Tech Plus - Interior/Exterior Semi-Gloss DTM Industrial Enamel.
 3. Sherwin-Williams Company; Industrial & Marine - Sher-Cryl HPA Semi-Gloss.

PART 3 - EXECUTION

3.1 EXAMINATION

- A. Examine substrates and conditions, with Applicator present, for compliance with requirements for maximum moisture content and other conditions affecting performance of the Work.
- B. Verify suitability of substrates, including surface conditions and compatibility with existing finishes and primers.

BRICK AND COATING REPAIR (AVCRAD)
DPW PROJECT NUMBER: BI-Q-643
A/E PROJECT NUMBER: 10054

- C. Proceed with coating application only after unsatisfactory conditions have been corrected.
 - 1. Application of coating indicates acceptance of surfaces and conditions.

3.2 PREPARATION

- A. Comply with manufacturer's written instructions and recommendations in "MPI Manual" applicable to substrates and paint systems indicated.
- B. Remove hardware, covers, plates, and similar items already in place that are removable and are not to be painted. If removal is impractical or impossible because of size or weight of item, provide surface-applied protection before surface preparation and painting.
 - 1. After completing painting operations, use workers skilled in the trades involved to reinstall items that were removed. Remove surface-applied protection.
- C. Clean substrates of substances that could impair bond of paints, including dust, dirt, oil, grease, and incompatible paints and encapsulants.
 - 1. Remove incompatible primers and reprime substrate with compatible primers or apply tie coat as required to produce paint systems indicated.
- D. Steel Substrates: Remove rust, loose mill scale, and shop primer if any. Clean using methods recommended in writing by paint manufacturer.

3.3 APPLICATION

- A. Apply paints according to manufacturer's written instructions and recommendations in "MPI Manual."
 - 1. Use applicators and techniques suited for paint and substrate indicated.
 - 2. Paint surfaces behind movable items same as similar exposed surfaces. Before final installation, paint surfaces behind permanently fixed items with prime coat only.
 - 3. Paint both sides and edges of exterior doors and entire exposed surface of exterior door frames.
 - 4. Paint entire exposed surface of window frames and sashes.
 - 5. Do not paint over labels of independent testing agencies or equipment name, identification, performance rating, or nomenclature plates.
 - 6. Primers specified in painting schedules may be omitted on items that are factory primed or factory finished if acceptable to topcoat manufacturers.

BRICK AND COATING REPAIR (AVCRAD)
DPW PROJECT NUMBER: BI-Q-643
A/E PROJECT NUMBER: 10054

- B. Tint undercoats same color as topcoat, but tint each undercoat a lighter shade to facilitate identification of each coat if multiple coats of same material are to be applied. Provide sufficient difference in shade of undercoats to distinguish each separate coat.
- C. If undercoats or other conditions show through topcoat, apply additional coats until cured film has a uniform paint finish, color, and appearance.
- D. Apply paints to produce surface films without cloudiness, spotting, holidays, laps, brush marks, roller tracking, runs, sags, ropiness, or other surface imperfections. Cut in sharp lines and color breaks.

3.4 FIELD QUALITY CONTROL

- A. Dry Film Thickness Testing: Owner may engage the services of a qualified testing and inspecting agency to inspect and test paint for dry film thickness.
 - 1. Contractor shall touch up and restore painted surfaces damaged by testing.
 - 2. If test results show that dry film thickness of applied paint does not comply with paint manufacturer's written recommendations, Contractor shall pay for testing and apply additional coats as needed to provide dry film thickness that complies with paint manufacturer's written recommendations.

3.5 CLEANING AND PROTECTION

- A. At end of each workday, remove rubbish, empty cans, rags, and other discarded materials from Project site.
- B. After completing paint application, clean spattered surfaces. Remove spattered paints by washing, scraping, or other methods. Do not scratch or damage adjacent finished surfaces.
- C. Protect work of other trades against damage from paint application. Correct damage to work of other trades by cleaning, repairing, replacing, and refinishing, as approved by Architect, and leave in an undamaged condition.
- D. At completion of construction activities of other trades, touch up and restore damaged or defaced painted surfaces.

3.6 EXTERIOR PAINTING SCHEDULE

- A. Steel Substrates:
 - 1. Water-Based Light Industrial Coating System:
 - a. Prime Coat: Primer, alkyd, anti-corrosive for metal, MPI #79.

BRICK AND COATING REPAIR (AVCRAD)
DPW PROJECT NUMBER: BI-Q-643
A/E PROJECT NUMBER: 10054

- b. Intermediate Coat: Light industrial coating, exterior, water based, matching topcoat.
- c. Topcoat: Light industrial coating, exterior, water based, semi-gloss (Gloss Level 5), MPI #163.

END OF SECTION 099113

BRICK AND COATING REPAIR (AVCRAD)
DPW PROJECT NUMBER: BI-Q-643
A/E PROJECT NUMBER: 10054

End of Addendum Number ONE